

iRest 



# I. Main parts

## 1.1 Main parts



back cushion  
pillow



stool



gas stick



waist cushion



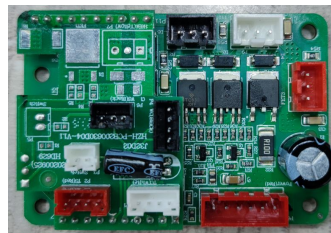
controller



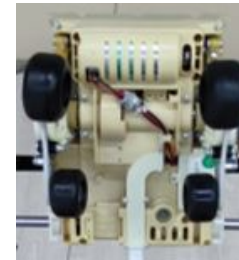
power board



main PCB



massage hand PCB



massage hand



back cover



# II. Internal structure

## 2.1 Internal structure



**1**  
massage  
hand



**2**  
main  
PCB



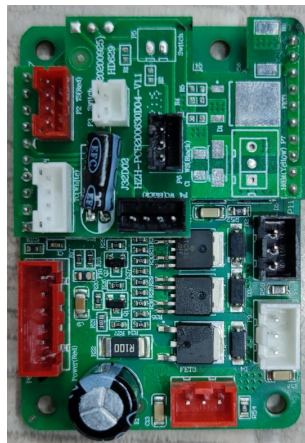
**3**  
solenoid  
valve



**4**  
air pump



**5**  
power  
board



**6**  
massage  
hand PCB



**7**  
bluetooth  
board





# II. Internal structure

## 2.2 power board

power input  
110V



power output  
24V/3A

power output  
5V/2A

# II. Internal structure

## 2.3 main PCB



24V power plug



massage hand plug



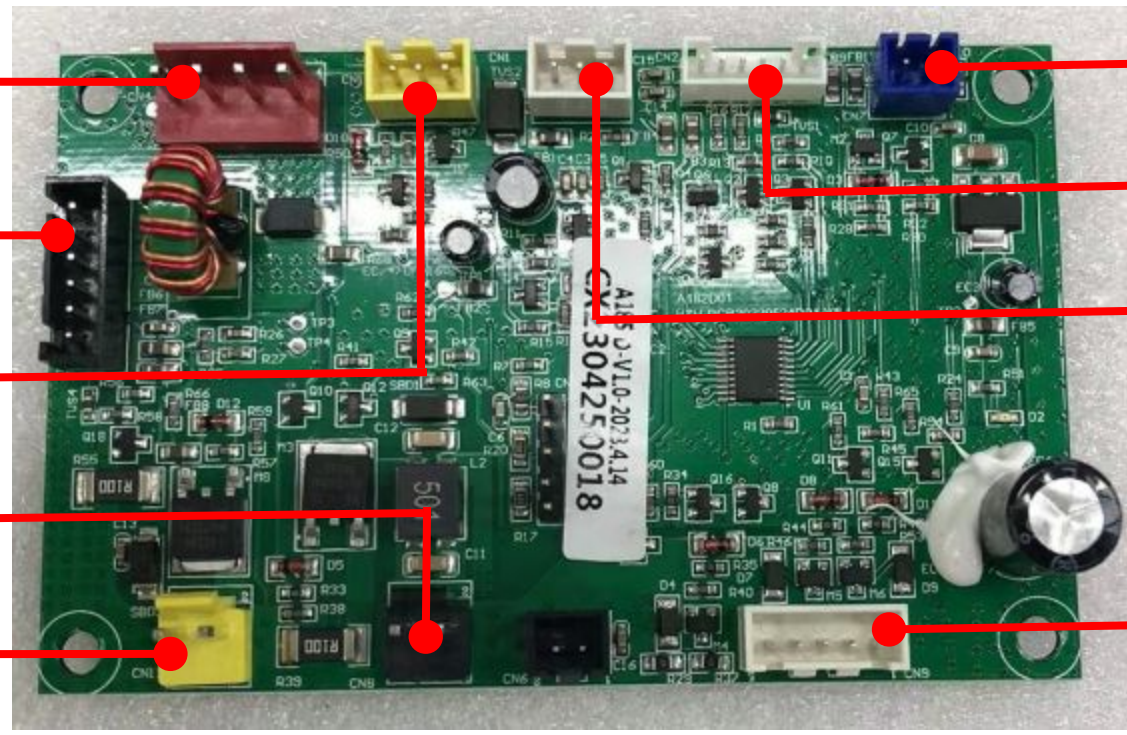
USB plug



air pump plug



back heating



bluetooth

controller plug

5V power plug

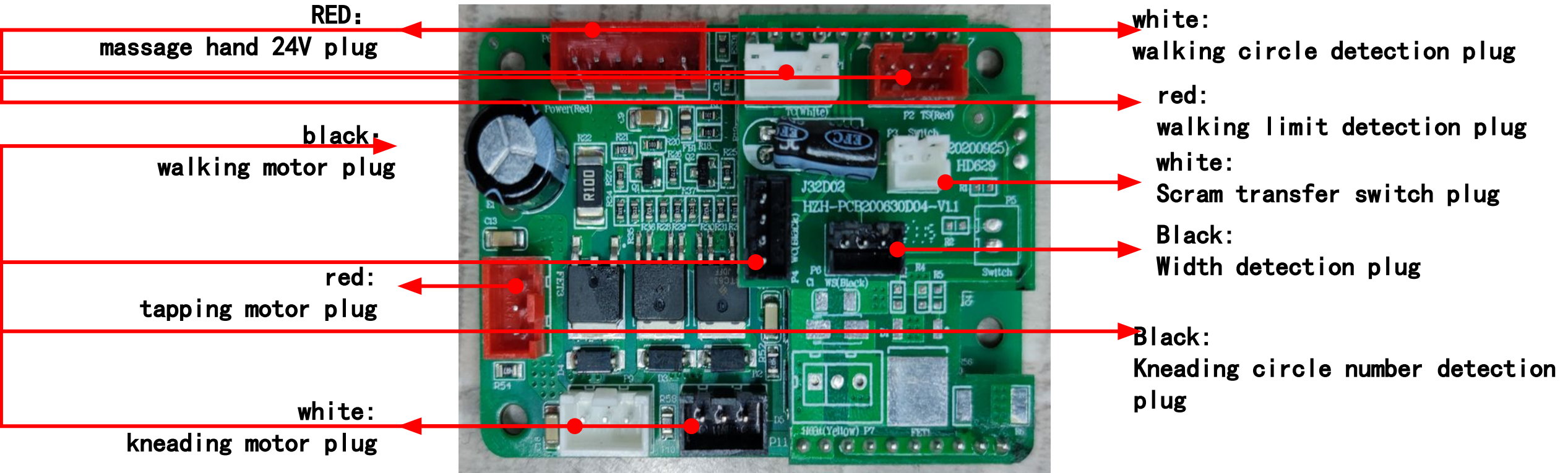
solenoid valve plug





# II. Internal structure

## 2.4 message hand PCB



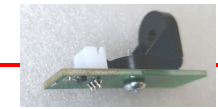


# II. Internal structure

## 2.5 massage hand



tapping motor



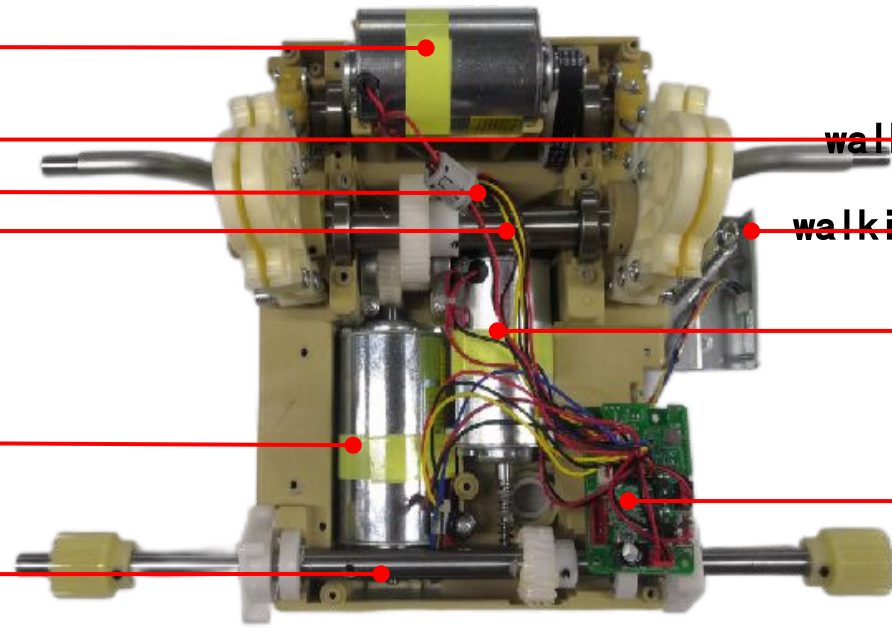
width detection



kneading motor



kneading circle detection board

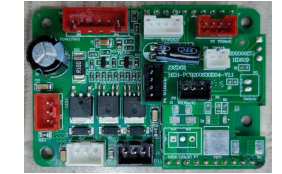


walking circle detection

walking distance detection

walking motor

PCB





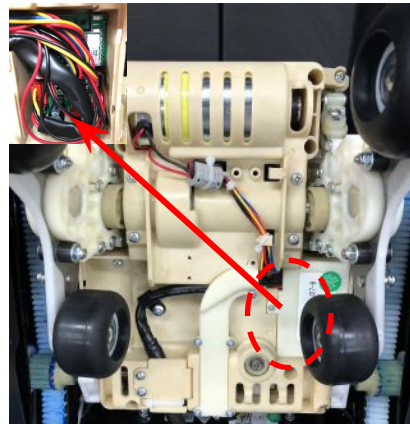
# III. Disassemble the chair

## 3.1 massage hand component



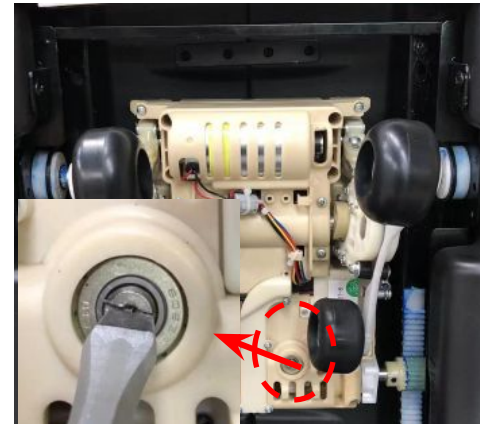
1

1. Remove 2 screws from the left and right blocks (Figure 1)



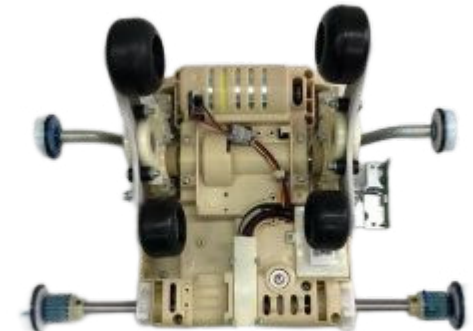
2

2. Separate the massage hand wire harness (Figure 2)



3

3. Turn the motor with a flat-head screwdriver to make the massage hand move to the block place (Figure 3)



4

4. Take out the massage hand



### III. Disassemble the chair

#### 3.2 Take out the speaker cover



1

1. Gently lift the speaker cover sticker with a knife (Figure 1)



2

2. Remove 3 fixing screws (Figure 2)



3

3. Take off the speaker cover (Figure 3)



1. The whole machine doesn't work
2. The massage hand does not work
3. The massage hand does not move up and down
4. Kneading function does not work
5. Tapping function does not work
6. Bluetooth does not work
7. One side speaker does not work
8. The backrest heating function does not work

### 4.1 The whole machine doesn't work



1



2



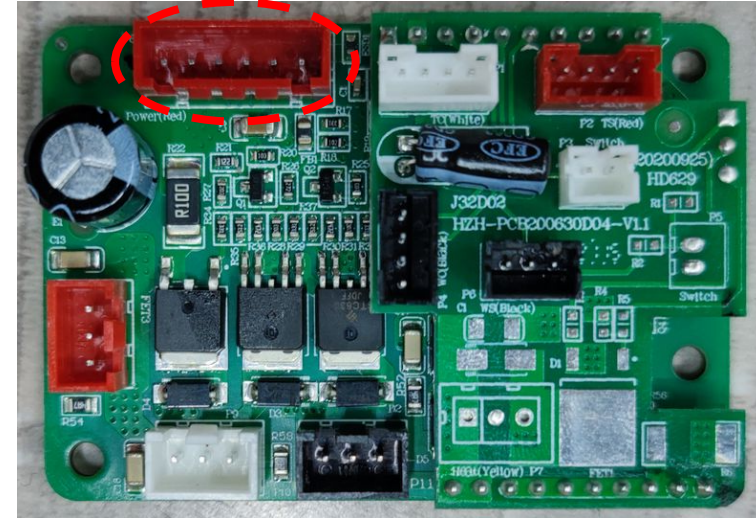
3

**Fault judgment and maintenance:**

1. Exclude external factors, such as the power cord and the power outlet has problem, or the power switch is turned off. ( Figure 1)
2. The controller has problem causes, replace a new one( Figure 2)
3. Check whether the power board has 24V /5V output. If there is no output, replace the power board. (Figure 3)
4. If there is a voltage output, replace the main PCB (Figure 3)



## 4.2 message hand doesn't work

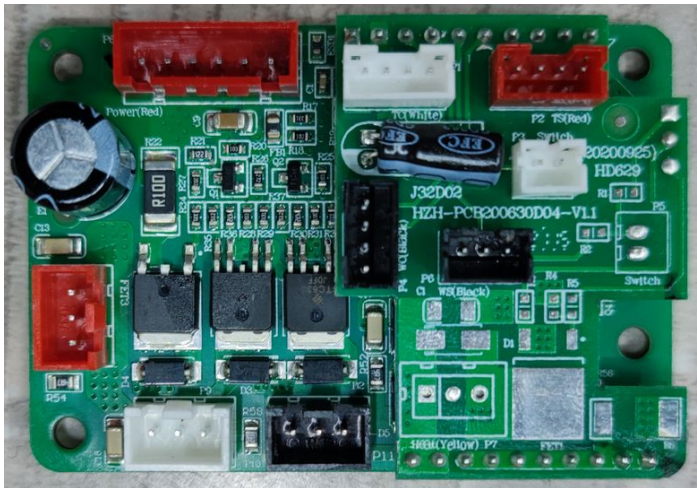


2

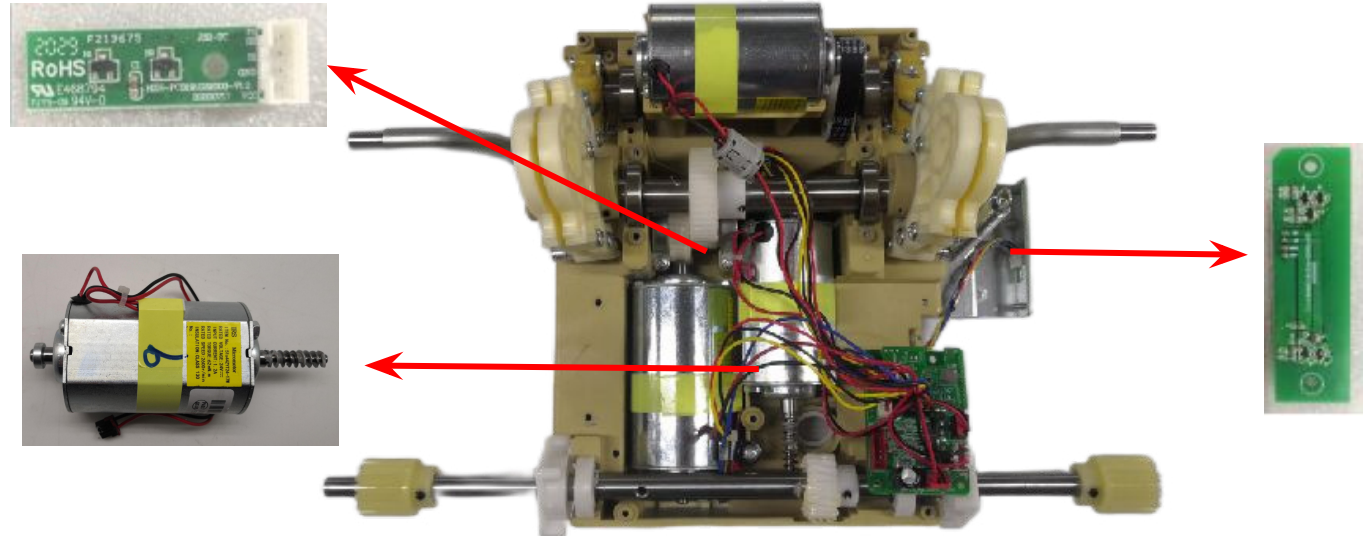
Fault diagnosis and maintenance:

- A. Check whether the wire harness on the message hand has poor contact or plug-in fall off (Figure 1) (Figure 2);
- B. Check whether the plug on the message hand PCB has voltage output, if not, replace a new PCB (Figure 1);
- C. If it has voltage output, check whether the wire harness from the main PCB to the message hand PCB is damaged; (Figure 2) (Figure 3)
- D. If all A,B,C are ok, replace a new message hand PCB(Figure 3)

### 4.3 The massage hand does not move up and down



1



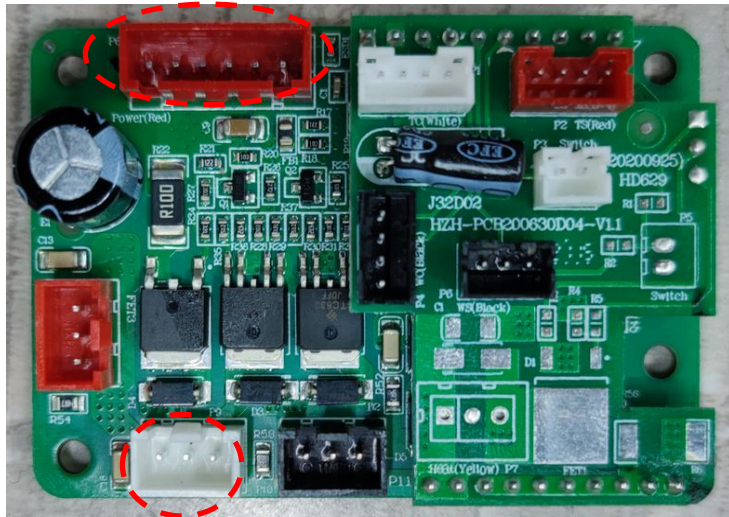
2

Fault diagnosis and maintenance:

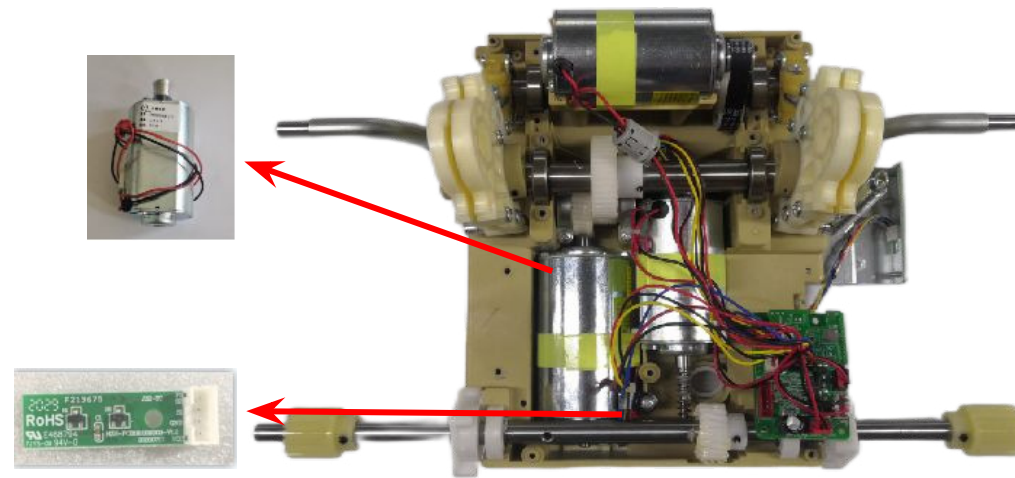
- A. Check whether the wire harness on the massage hand has poor contact or plug-in fall off (Figure 1) (Figure 2);
- B. Check the **walking circle detection board** (substitution method), **walking distance detection board** (substitution method), **walking motor** (multimeter to test, whether the resistance value 3-20Ω) (Figure 2);
- C. If above are ok, replace a new massage hand PCB.



## 4.4 Kneading function does not work



1



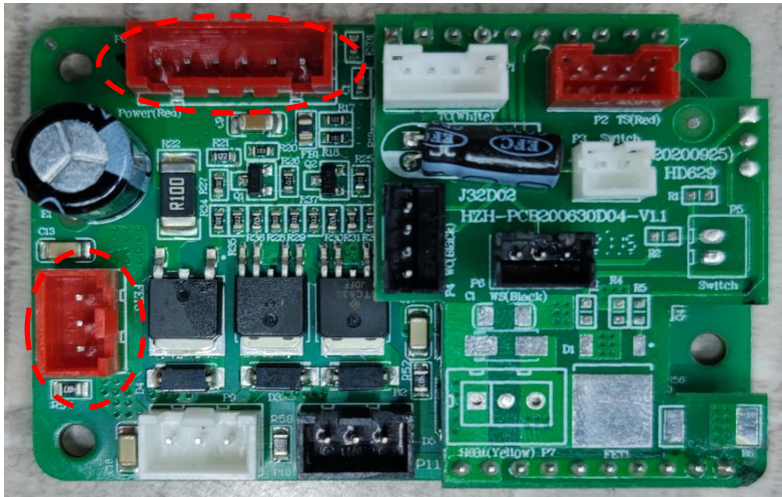
2

Fault diagnosis and maintenance:

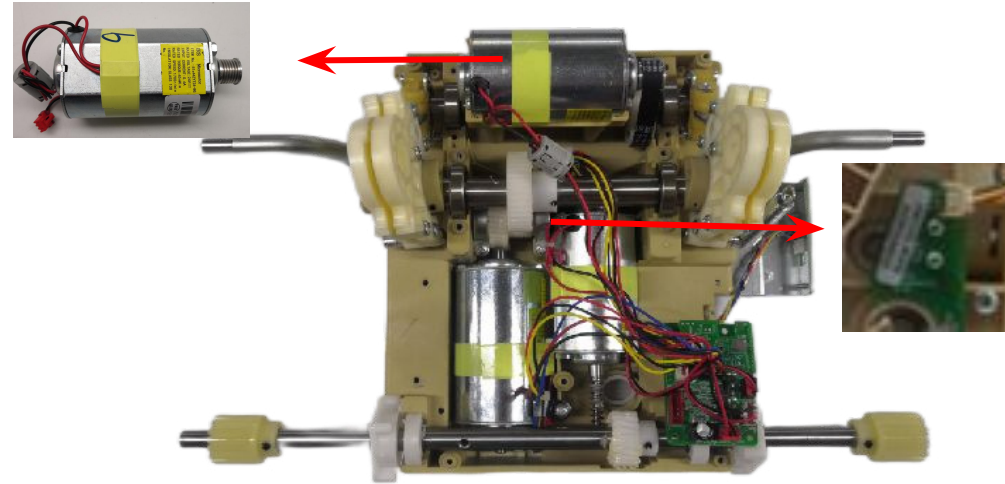
- A. Check whether the plug on the massage hand has poor contact or plug-in fall off (Figure 1) (Figure 2);
- B. Check the **kneading circle detection board** (substitution method), **tapping motor** (multimeter to test, whether the resistance value 3-20Ω) (Figure 2);
- C. If above are ok, replace a new massage hand PCB.



## 4.5 Tapping function does not work



1



2

Fault diagnosis and maintenance:

- A. Check whether the plug on the message hand has poor contact or plug-in fall off (Figure 1) (Figure 2);
- B. Check the **width detection board** (substitution method), **tapping motor** (multimeter to test, whether the resistance value 3-20 $\Omega$ ) (Figure 2);
- C. If above are ok, replace a new message hand PCB.



### 4.6 Bluetooth does not work



1



2

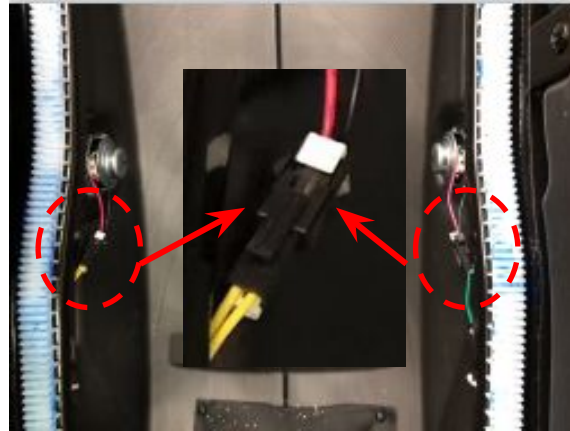
Fault diagnosis and maintenance:

1. Check whether Bluetooth has been connected to other devices;
2. Check whether the Bluetooth-related plug-in has fallen off (Figure 1) (Figure 2);
3. Check whether the Bluetooth plug-in of the main PCB has a voltage output, if no voltage output, replace a new PCB (Figure 1)
4. If there is voltage output, check whether the wire harness from the main PCB to the Bluetooth board is good or not, if the wire harness is good, then replace the Bluetooth board (Figure 2)

### 4.7 One side speaker does not work



1



2



3

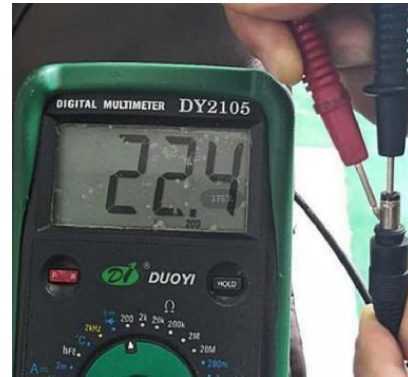
Fault diagnosis and maintenance:

1. Check whether the speaker plug-in has poor contact or falling off (Figure 1) (Figure 2);
2. Check whether the speaker plug-in has voltage output, no voltage output, then replace a new bluetooth board; (Figure 1)
3. If it has voltage output, replace a speaker assembly; (Figure 3)

### 4.8 The backrest heating function does not work



1



2



3



4

Fault diagnosis and maintenance:

1. Check whether the backrest heating wire plug-in has poor contact or falling off (Figure 1);
2. Use a multimeter to check whether the PCB plug-in has 24V output. If there is no output, replace a new PCB (Figure 2) (Figure 3)
3. If there is a 24V voltage output, replace the heating element (Figure 4)



按摩椅 我要艾力斯特