



Xiamen Comfort Science & Technology Co.,Ltd

# 产 品 维 修 手 册

## Maintenance Service Manual

产品型号/MODEL : 806

蒙发利集团·客服

By the Easepal`s Customer Service Dept.

# 1. 工具列表 Tools List Tools required

			
<p>十字螺丝刀 Screwdriver size 1,2,3</p>	<p>老虎钳 尖嘴钳 Diagonal cutter and long nose pliers</p>	<p>电烙铁 Soldering Kit</p>	<p>扳手 Spanner tools Kit</p>
			
<p>电笔 Test pen</p>	<p>六角扳手 Allen Key set</p>	<p>内六角扳手 Ratchet Tools Set</p>	<p>24V/DC 电源 24V/DC power</p>
			
<p>电动螺丝刀 Electric Driver</p>	<p>电工胶 electrical adhesive tape</p>	<p>扎扣 Cable Ties</p>	<p>压线帽 WIRE ONECTORS</p>

# 目录

## Table of Contents

一 . 披风枕头的拆卸 Disassembly of the backrest pad and pillow.....	4
二 . 头罩组件的拆卸 disassembly of the hood.....	5
三.肩部的拆卸 disassembly of the shoulder.....	8
四.侧板组件的拆卸 disassembly of the side board.....	8
五.座侧的拆卸 ( 图示为左边 , 右边同样方式 ) .....	11
Disassembly of side seat massage.....	11
六.机芯的拆卸与安装 disassembly of the gear box and install the gear box.....	11
七.前靠背的拆卸 disassembly of front backrest cover.....	13
八 . 小腿的拆卸 disassembly of the leg rest.....	15
九 . 座架推杆和小腿推杆的拆卸 disassembly of the actuator.....	19
十 . 气泵盒组件的拆卸 disassembly of the air pump unit.....	23
十一 . 座架转接板 PCBA 和座架气阀的拆卸.....	24
Disassembly of the PCBA and the air valve on the button of backrest.....	24
十二 . 中心盒组件的拆卸 disassembly of the main PCB box.....	25

# 一 . 披风枕头的拆卸 Disassembly of the backrest pad and pillow

## A . 拉开链，可以取下枕头

Locate the Head Pad Assy at the top, front of the chair as shown in picture below



拉开拉链，取下小枕头

unzip the zipper , take down the pillow

小枕头被取下

the pillow had been taken down

## B . 拉开披风拉链，取下披风

Unzip the zipper fixing backrest pad , then take down the backrest pad



拉开拉链，取下小枕头

unzip the zipper , take down the pillow

解开粘毛扣

Disconnect the fastening

拉开坐垫两边的拉链

Unzip the zipper



拉开坐垫与小腿的拉链

Unzip the zipper

拉开坐垫与坐部的拉链

Unzip the zipper

披风被取下

Backrest pad had been taken down

### C. 腰枕的拆卸

Disassembly of the waist pillow



拉开腰枕与披风的拉链  
Unzip the zipper



取下腰枕  
Take down the waist pillow

## 二 . 头罩组件的拆卸 disassembly of the hood

### A. 取下披风

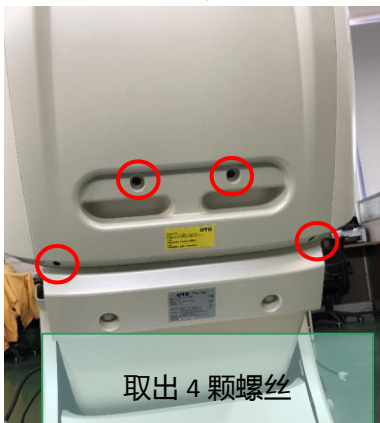
Take down the pad

### B. 拆卸上后盖和分离肩部

Disassemble the rear cover and the shoulder massage



取出头罩正前方的 5 颗螺丝  
Remove 5 screws



取出 4 颗螺丝  
Take down 4 screws



拉开肩部两边的拉链  
Unzip the zipper both side



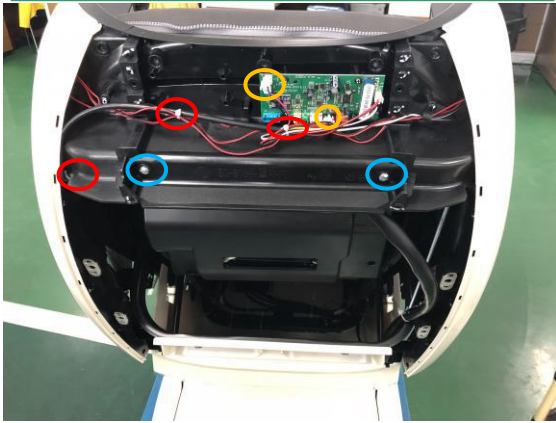
拉开拉链后，取出肩部的 6 颗螺丝，分离肩部  
Remove 6 screws, take down the shoulder



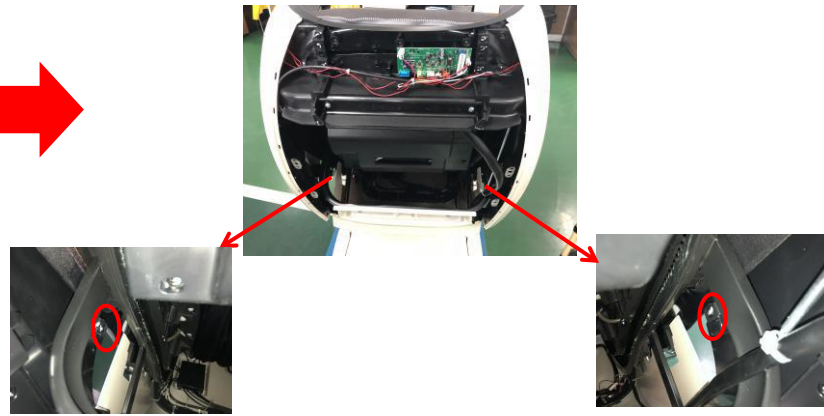
将手抓在凹槽处往外掰开，取下上后盖  
Take down the cover



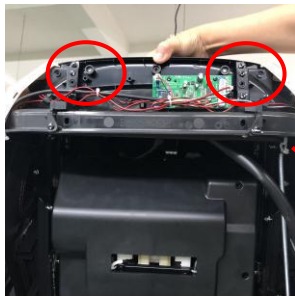
上后盖  
Rear cover



剪掉 3 个扎带、拔掉两个端子、取出 2 颗螺丝  
Cut 3 cable tie , discontent 2 terminal , remove 2 screws



取出头罩固定背架的 2 颗螺丝，取下头罩组件  
Remove 2 screws , take down the hood



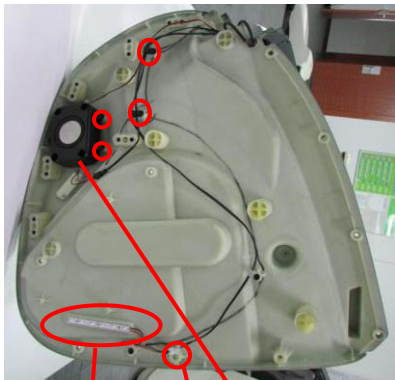
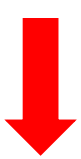
最后取下头罩组件时请抓住组件衔接处，防止两边重量过重，导致衔接处断裂  
Hold this position prevent the hood broken

C. 头罩内部组件拆卸 disassembly of the hood unit

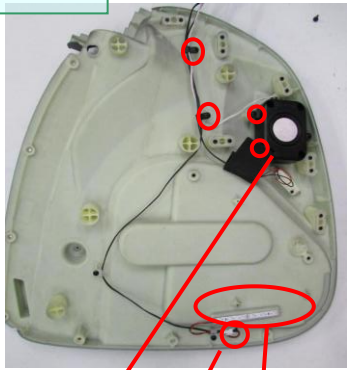
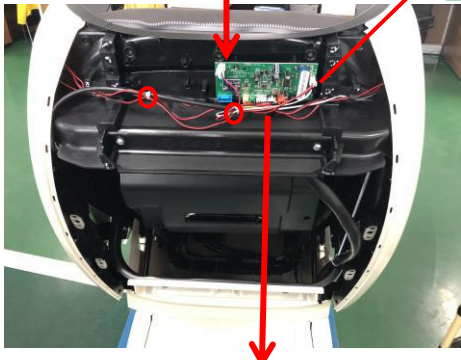


用一字螺丝刀沿喇叭网罩边缘撬开，即可更换  
 Open the horn cover with a screwdriver or a knife

取下固定头罩外盖螺丝，一边 10 颗，两边总共 20 颗，即可分离头罩外部  
 Remove 10 screws on both side , separate the hood



蓝牙功放板  
 Bluetooth  
 PCBA



取下 4 颗红色标记的螺丝、断开所有端子即可更换蓝牙功放板  
 Remove 4 screws、discontent all the terminals , remove the PCBA

灯带  
 LED

取下 4 颗螺丝，断开两个在功放板上的信号端子(黄色标注)  
 Remove 4 screws , discontent the terminals

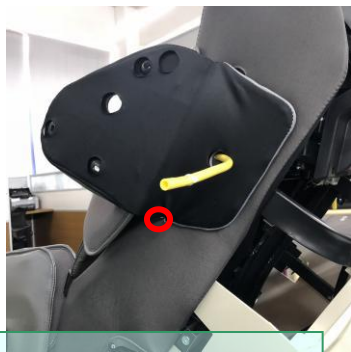
灯带  
 LED

拔掉端子，撕开 LOGO 灯带，即可进行更换  
 Discontent the terminal , take down the LED

### 三.肩部的拆卸 disassembly of the shoulder

#### A.拆卸头罩后

Take down the hood



拉开拉链，拔掉气管  
Unzip the zipper, discontent  
the air hose



用六角扳手，取下 8 颗螺丝，肩部完成拆卸



拉开拉链，拔掉气管  
Unzip the zipper

### 四.侧板组件的拆卸 disassembly of the side board

#### A.侧板的拆卸（图示为右边，左边同样的拆卸方式）

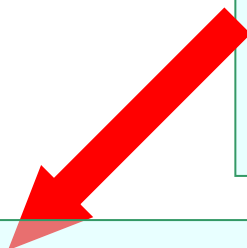
Disassembly of the side board



用一字螺丝刀在底部撬开装饰件(用布包下螺丝刀头部，以防止划伤侧板)  
Open the cover with a screwdriver



断开 1 个信号端子（端子颜色为透明的），拔掉气管  
Discontent the transparent terminal, Discontent the  
hose



用六角扳手取下 4 颗螺丝，将侧板往上一提，即可  
取下侧板  
Remove 4 screws, take down the side board upwards

B. 手控器的拆卸 disassembly of the remote control



延手控器上下盖中间缝隙将手  
控器下盖取下  
Take down the cover



用小十字螺丝刀，  
取下两颗螺丝  
Remove 2 screws



拔掉端子，完成拆卸  
Discontent the terminal

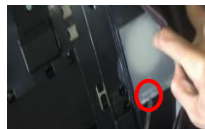
手控器收线器拆卸 disassembly of the wire unit

将左侧板取下 take down the side board

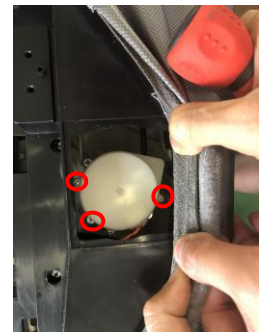
取出手控器 remove the remote control



No1：撕开毛扣  
Open the sticky buckle



No2：撕开毛扣后，用一字螺丝刀  
延边缘撬开贴面  
open the veneer with a screwdriver



No3：用十字螺丝刀取出 3 颗螺丝，  
即可完成收线器的拆卸  
Remove 3 screws，take down the  
wire unit

C. 侧板气阀和侧板转接板的拆卸（图示为右边，左边同样的拆卸方式）

Disassembly of the air valve and the Transfer PCBA

1:将侧板取下 take down the side board

2:取下侧板装饰件 take down the cover of the side board

3. 取下气阀和信号转接板 take down the air valve and transfer PCBA



取下 2 颗固定气阀盒上盖的螺丝  
Remove 2 screws



拔掉 2 个信号端子  
Discontent 2 terminal

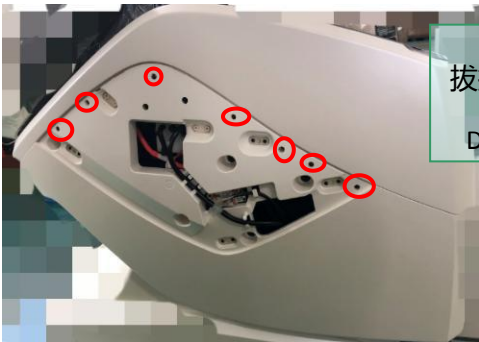


取下 2 颗螺丝，即可更换  
信号转接板  
Remove 2 screws , take  
down the PCBA

### D.侧板控制器的拆卸 disassembly the controller of the side board

1.取下右侧板 take down the side board

2.取下装饰件 take down the cover



用十字螺丝刀取下 7 颗螺丝  
Remove 7 screws

拔掉端子，即可取出气阀  
Discontent the terminal



取出 16 颗螺丝  
Remove 16 screws



拉开拉链  
Unzip the zipper

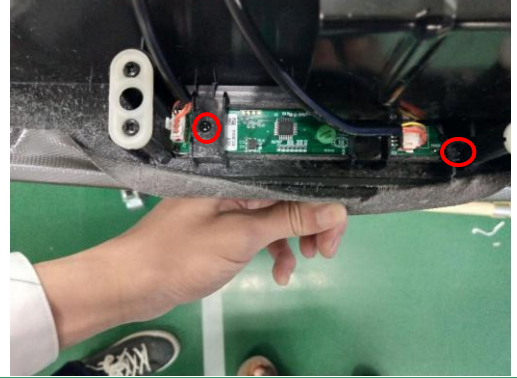


取下三个堵头后将拆除皮套  
Take down 3 Plug





取下 7 颗螺丝，即可将上下外侧板拆除



取下 2 颗螺丝，即可更换侧板按键板

## 五.座侧的拆卸 (图示为左边, 右边同样方式)

### Disassembly of side seat massage

A.先将侧板取下 remove the side board

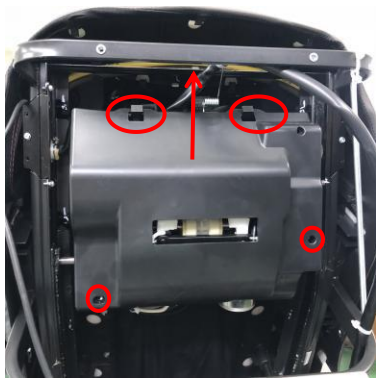


用六角扳手取下两颗螺丝，拔掉气管，即可更换坐部

Remove 2 screws, discontent the air hose

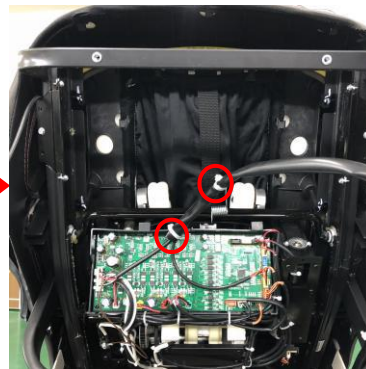
## 六.机芯的拆卸与安装 disassembly of the gear box and install the gear box

A.上后盖取下 remove the upper rear cover



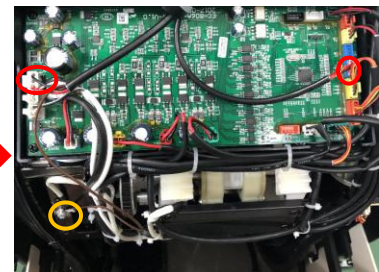
拆除 2 颗螺丝，再向上提，取下机芯盖

Remove 2 screws, take down the cover



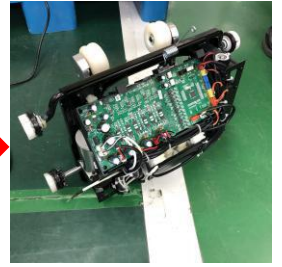
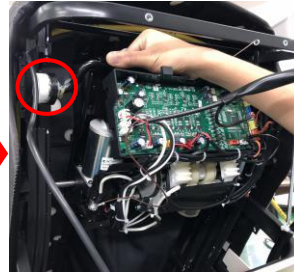
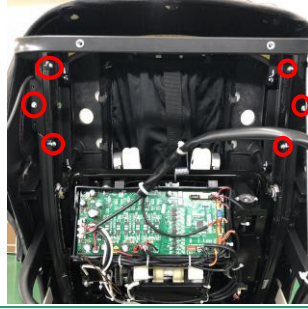
剪掉扎扣

Cut the cable tie



断开两个信号端子，拆除地线螺丝

Discontent 2 terminals,remove the screw



拔掉行程端子(红色),用外接 24V 电源将机芯走至下方

Move down gear box with 24V power on the red terminal

用十字螺丝刀取出 6 颗螺丝, 取出挡块

Remove 6 screws , take down the Iron baffle

用外接 24V 电源再将机芯走至上方, 先将上导向轮走出背架导轨, 再将机芯继续行走, 至下导向轮走出背架导轨, 取下机芯

Move up and remove the gear box with a 24V power on the red terminal

## B.机芯安装 install gear box

1. 先将机芯放置背架导轨

put the gear box in the backrest

2. 用外接 24V 电源, 将机芯走至下方

Move down the gear box with a 24V power on the red terminal

3. 锁上两边缺口的挡块 ( 6 颗螺丝 )

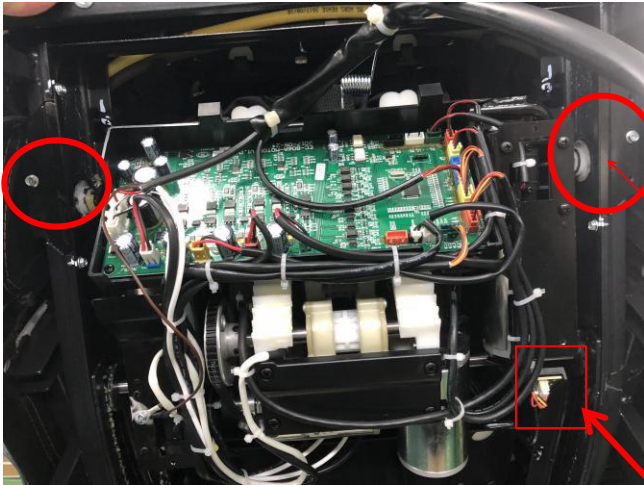
Install the iron baffle ( 6 screws )

4. 将背架线 2 个端子安插, 接上地线

Connect 2 terminal , screw the screw with the ground wire

5.再将背架线的 2 个扎扣位重新扎好

Fasten the cable tie



再将机芯用 24V 外接电源走至上方 ( 上导轨轮与  
固定挡块的中间螺丝平行 )

Make the wheel lower on the middle of the iron  
baffle

按住计数码盘开关 ( 黄色标识 ) 将码盘调的白点调至  
计数器下方

Press the button and make the white line lower on the  
sensor



7.将机芯板上的行程端子安插，锁上机芯盖，即可完成机芯安装。

Connect the red terminal well , install the cover of gear box

## 七.前靠背的拆卸 disassembly of front backrest cover

1.拆下披风，将上后盖取下

Take down the backrest pad , take down the upper rear cover

2. 取下头罩组件

Take down the hood

3. 拆除肩部组件

Take down the shoulder

4. 将两边侧板取下

Take down the side board

5. 取下坐部

Take down the seat pad

6. 取出下后盖

Take down the lower cover



用十字螺丝刀拆除 4 颗螺丝，取出下后盖

Remove 4 screws , take down the lower cover

取出下后盖

The lower cover had been taken down

7. 拆除前靠背固定背架的螺丝，取下前靠背

Remove the screws fixing the front backrest cover , then remove the front backrest cover



底部 4 颗螺丝

4 screws on the bottom



用十字螺丝刀取出 14 颗螺丝 ( 包含底部 4 颗 )  
Remove 14 screws ( include 4 screws on the bottom )



拔掉黄色气管和灰色气管

Discontent the yellow



剪掉扎扣 拔掉从背架下来的语音信号端子

Cut the cable tie , discontent the terminal

## 八 . 小腿的拆卸 disassembly of the leg rest

### A 小腿组件的拆卸 disassembly of the leg rest unit



拔掉两个小腿防脱卡片, 抬起小腿往右一抬

Remove 2 iron , move out the leg rest



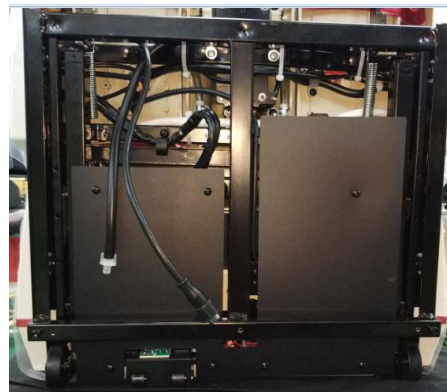
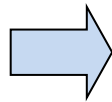
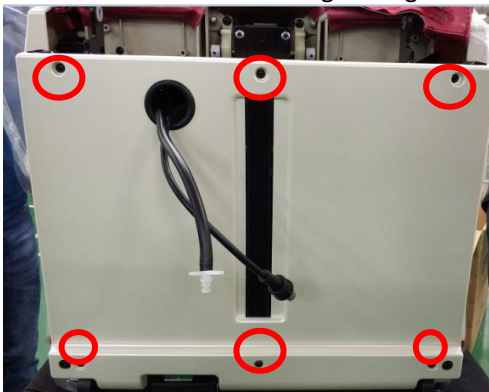
断开气管、信号端子, 拆除小腿

Discontent the terminal and air hose

### B. 上小腿组件的拆卸 disassembly of the upper legrest

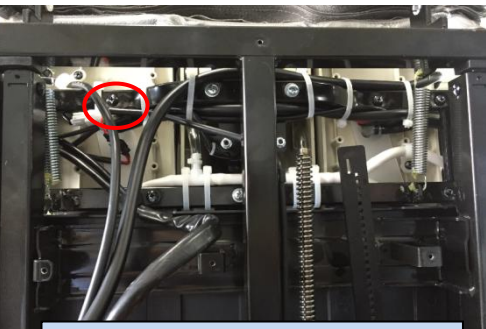
#### 1. 取下固定小腿保护盖的螺丝, 移除小腿保护盖

Remove the screws fixing the leg rest cover , take down the cover



#### 2. 拔掉上小腿的接线端子

Discontent the terminals for upper leg rest



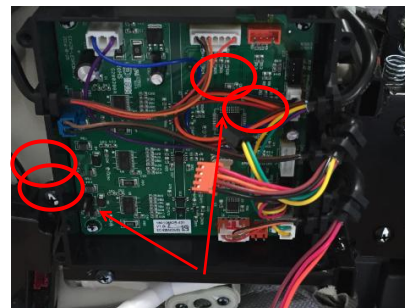
拔掉端子

discontent the terminal



掰下右装饰盖

Break off the cover

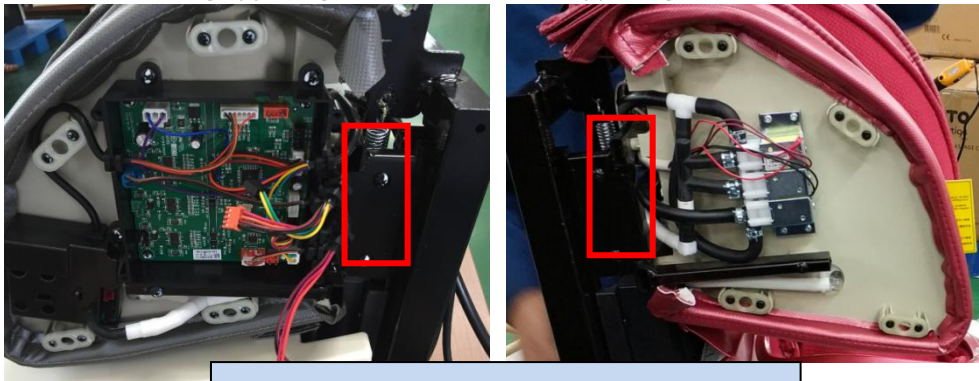


拔掉端子

discontent the terminals

3.取下固定上小腿的 4 枚螺丝，移出上小腿

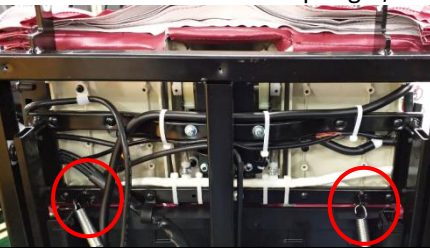
Remove 4 screws fixing upper leg rest , move out the upper leg rest



取下固定上小腿组件的螺丝  
Remove 4 screws fixing upper leg rest

4 . 取下 2 个弹簧，拉开上小腿拉链，移出上小腿组件

Take down 2 springs , unzip the zipper , remove the upper leg rest



取下弹簧  
Take down the springs



拉开拉链  
Unzip the zipper



移出上小腿组件  
Take down the upper leg rest

5.现在，我们可以取下上小腿皮套。如果有需要，可以更换小腿气袋。

Now , we can take down the leather。 If necessary , we can replace the air bag

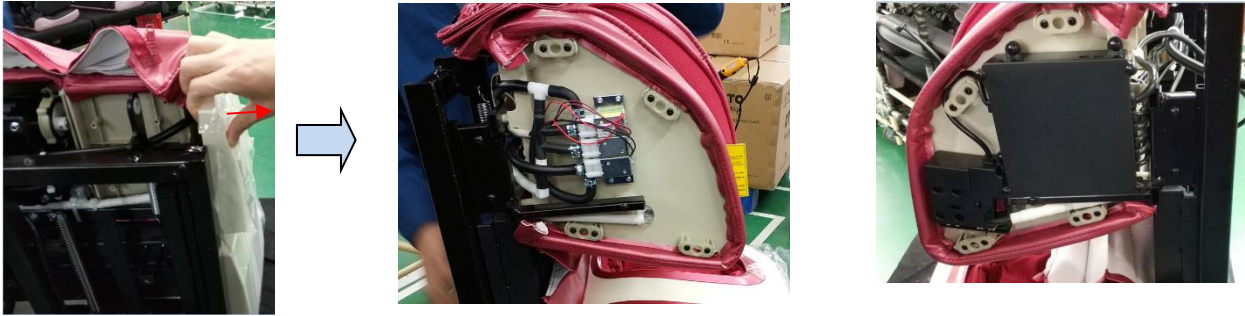


### c.小腿气阀、小腿转接板、气压检测板的拆卸

Disassembly of the air valve、PCB for leg rest、PCB for air pressure detection

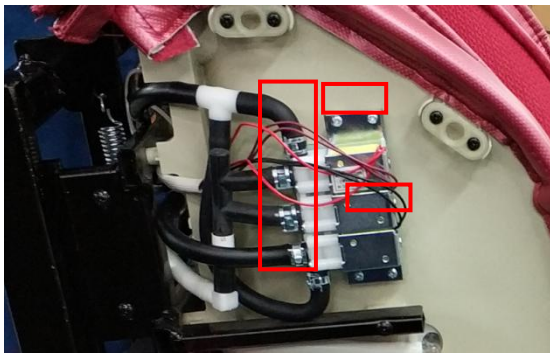
#### 1. 掰开上小腿侧边装饰盖

Open the cover



#### 2. 根据需要，可以更换气阀。

Now we can replace the air valve



拔掉气管，取下固定气阀的螺丝

Discontent the air hose , remove the

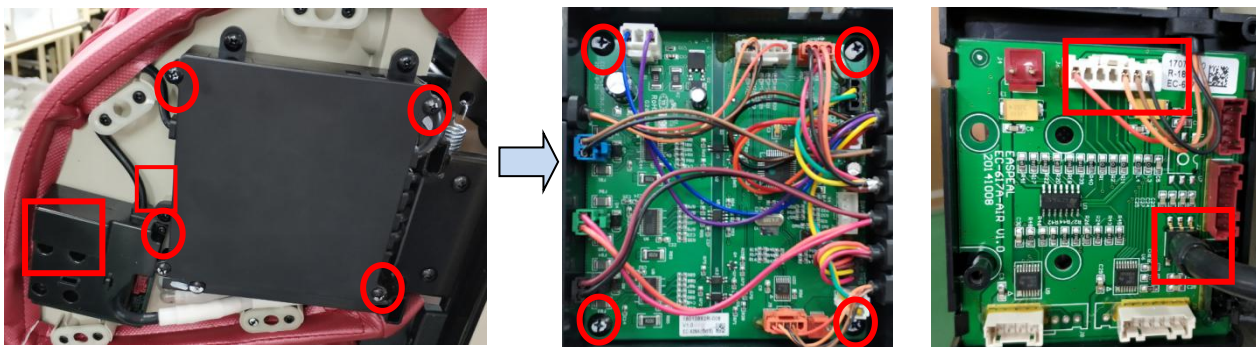


拔掉气阀端子

Discontent the terminal

#### 3. 根据需要，可以更换小腿转接板、气压检测板

Now we can replace the PCB for leg rest and the PCB for air pressure detection



取下上图螺丝，拔掉接线端子，可以更换小腿转接板和气压检测板

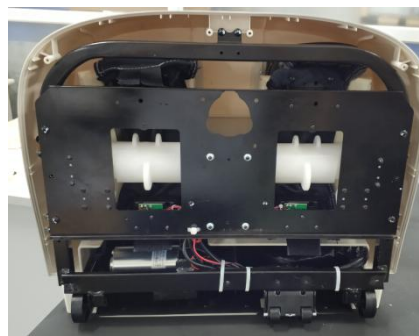
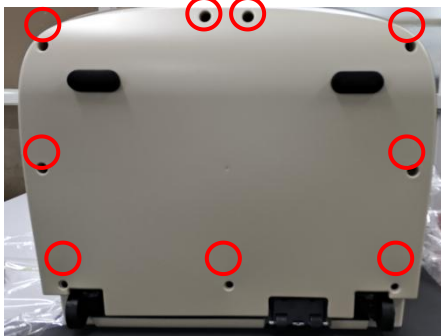
Remove the screws and discontent the terminals

#### D. 下小腿外盖的拆卸

Disassembly of lower leg rest cover

##### 1. 取下小腿底盖

Remove the lower cover

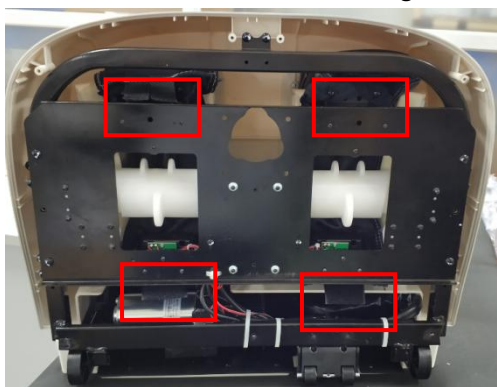


取下固定下盖的螺丝，移出下盖

Remove the screws and remove the cover

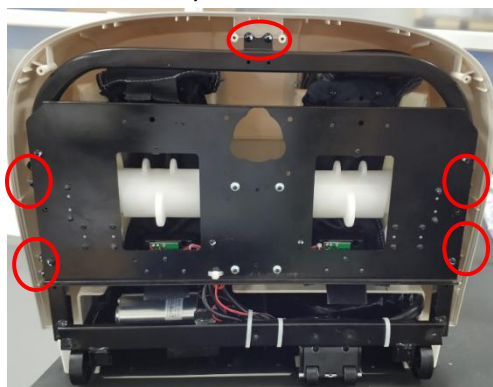
##### 2. 取下固定小腿外盖的螺丝，撕开粘毛扣。移出外盖。

Remove the screws fixing the cover , stick the Sticky。 Remove the cover



分离毛扣

stick the Sticky



取下螺丝

Remove screws



下小腿外盖被取下

The cover had been taken down

#### E. 小腿揉夹电机组件的拆卸

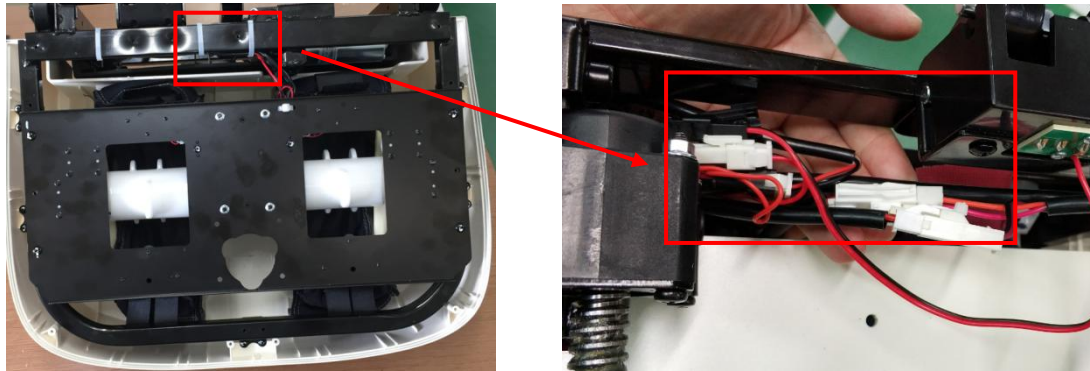
Disassembly of the kneading motor unit of leg rest

##### 1. 取下下小腿底盖（参考下小腿外盖的拆卸）

Remove the lower cover of leg rest ( refer to Disassembly of lower leg rest cover )

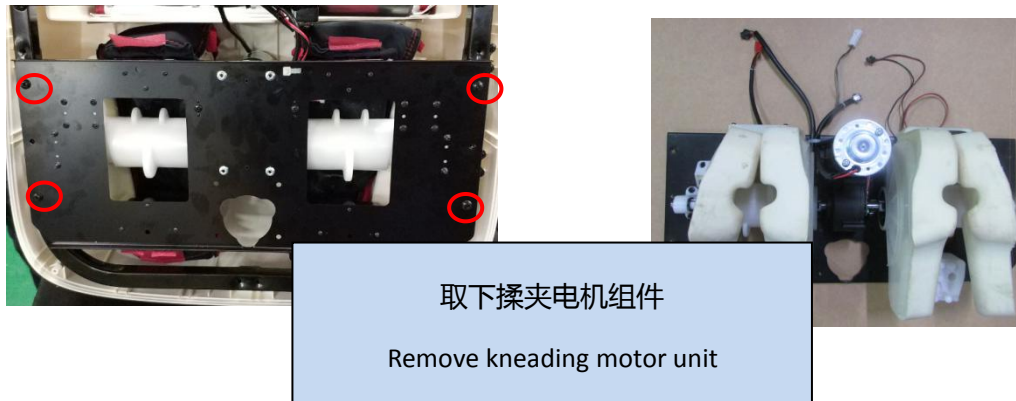
##### 2. 剪掉扎扣断开揉夹电机接线端子

Cut the cable tie , discontent the terminals of the motor



3. 取下固定揉夹电机组件的螺丝

Remove the screws fixing the kneading motor unit



## 九 . 座架推杆和小腿推杆的拆卸 disassembly of the actuator

拆除座架推杆时，必须提住椅子，防止椅子滑落

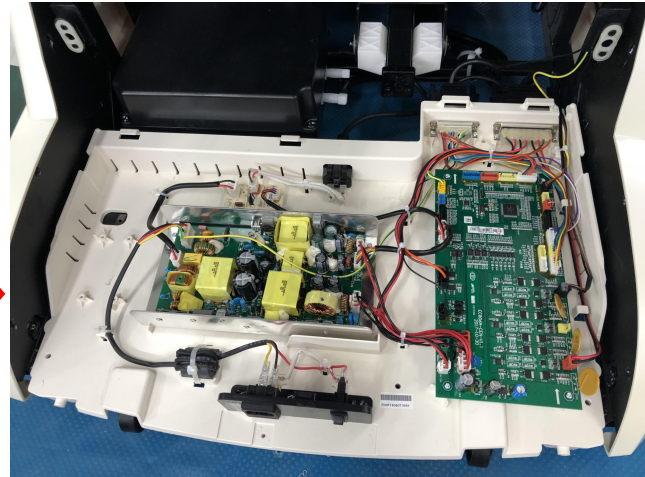
Attention : hold the backrest prevent the backrest dropped suddenly ( had better 2 people Coordination )

1. 拆除小腿 remove the leg rest
2. 拆除上后盖和下后盖 remove the rear cover
3. 拆除保护挡板 break of the baffle



用手往外掰即可取下保护挡布  
Break off the baffle

4. 拆除中心盒上盖 remove the cover of main PCB box



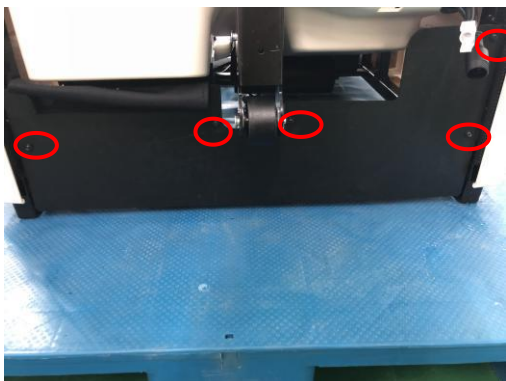
取下 3 颗螺丝，拆除中心盒上盖

Remove 3 screws , remove the cover

5. 拆除座架推杆

拆除座架推杆时，必须提住椅子，防止椅子滑落（建议两人配合）

Attention : hold the backrest prevent the backrest dropped suddenly ( had better 2 people Coordination )



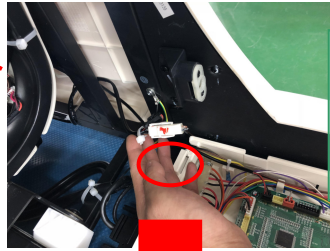
取下 5 颗螺丝，分离前挡布

Remove 5 screws



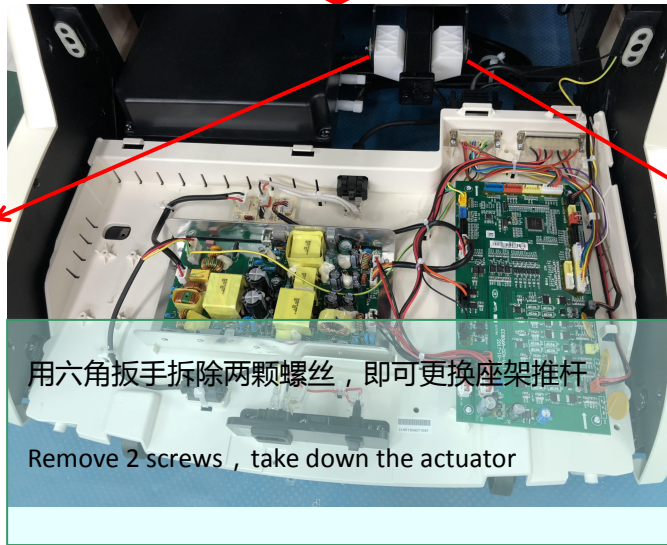
拔掉插销，取出销轴，剪掉扎扣

Take the shaft , cut the cable tie



剪掉扎扣，拔掉两个信号端子

Cut the cable tie , discontent 2 terminals



用六角扳手拆除两颗螺丝，即可更换座架推杆

Remove 2 screws , take down the actuator



拆除座架推杆时，必须提住椅子，防止椅子滑落

Attention : hold the backrest prevent the backrest dropped suddenly ( had

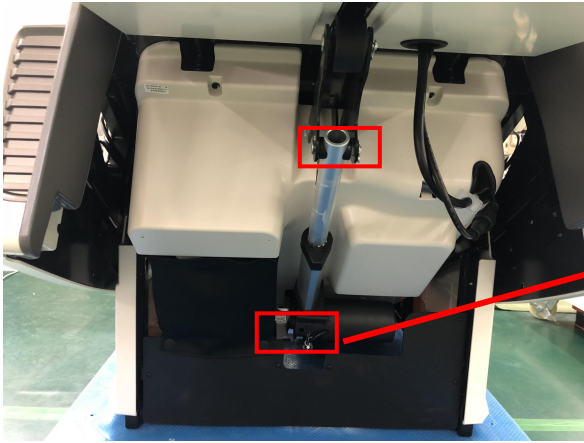
B. 拆卸小腿推杆 disassembly of the leg rest actuator

1. 拆除上后盖和下后盖

Remove the rear cover ( upper and lower )

2. 取下推杆两边的插销，如下图标记位置

Take down 2 shaft as the picture below



拔掉插销，取下销轴

Take down the shaft



拔掉插销，取下销轴，并取下小腿推杆

Take down the actuator



剪掉扎扣，拔掉端子即可完整更换推杆

Cut the cable tie , discontent the terminal

Then we can replace a new actuator

## 十. 气泵盒组件的拆卸 disassembly of the air pump unit

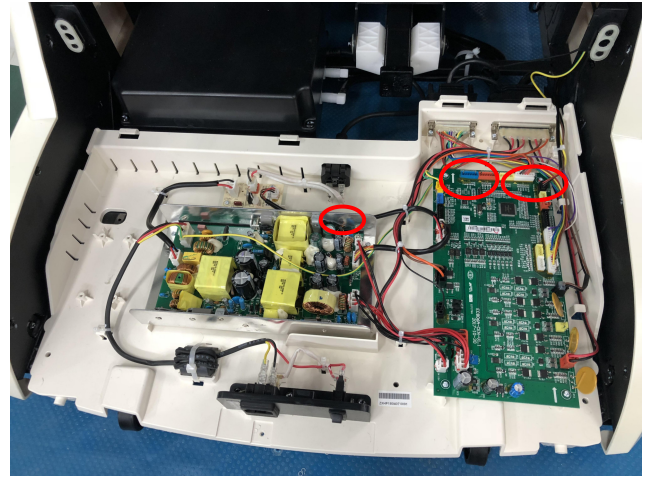
A. 将保护挡板取出 remove the baffle

B. 将中心盒组件取出 remove the cover of main PCB box



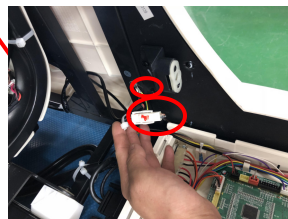
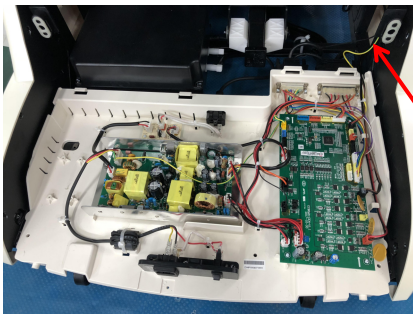
取下 3 颗螺丝，拆除中心盒上盖

Remove 3 screws, take down the cover



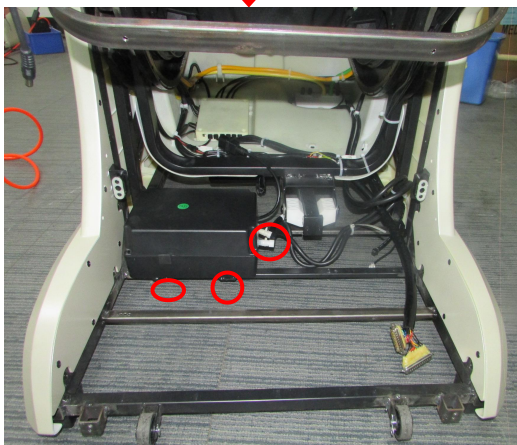
将气泵电源断开、两个背架端子断开

Pull out the plug and 2 connector



拆下地线螺丝，断开两个推杆端子，取出整个中心盒组件

Remove the screw fixing the ground wire  
Discontent 2 terminals  
remove the main PCB box



取出 2 颗螺丝，拔掉气管，即可更换气泵盒组件

Remove 2 screws, discontent the air hose

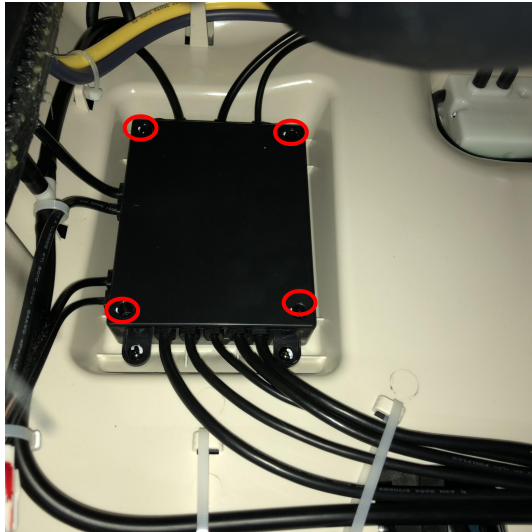


## 十一 . 座架转接板 PCBA 和座架气阀的拆卸

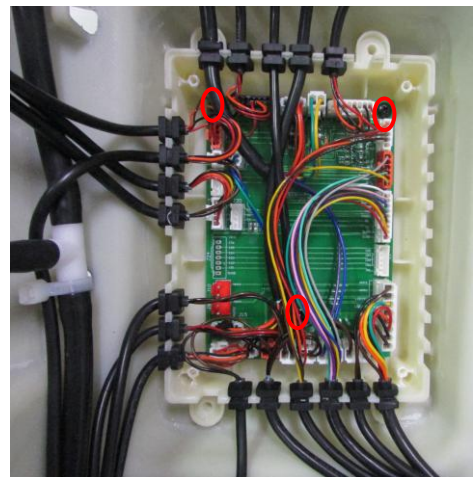
### Disassembly of the PCBA and the air valve on the button of backrest

#### A. 座架转接板的拆卸 disassembly of the transfer PCBA

1. 将上下后盖取出，保护挡板取出 take down the rear cover ( upper and lower ) , take down the baffle



用十字螺丝刀取出 4 颗螺丝  
Remove 4 screws



拔掉所有端子线，拆除 3 颗螺丝即可更换  
Remove 3 screws and discontnet all the terminals

#### B. 座下气阀的拆卸 disassembly of the air valve under the seat

1. 将上下后盖取出，保护挡板取出

take down the rear cover ( upper and lower ) , take down the baffle



拆除 3 颗螺丝，拔掉黑色，将气阀盒  
上盖打开，即可取出气阀进行更换  
Remove 3 screws , discontnet the air  
hose and terminal , open the cover ,  
remove the air valve

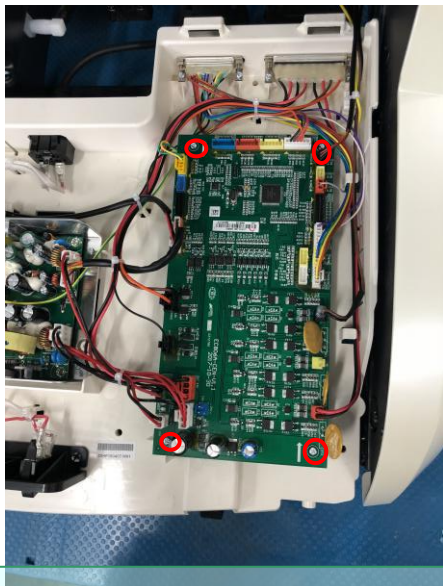


座下气阀  
The air valve had been  
taken down

## 十二 . 中心盒组件的拆卸 disassembly of the main PCB box

将中心盒上盖取出 remove the cover of the main PCB box

A.中心板的拆卸 disassembly of the main PCB

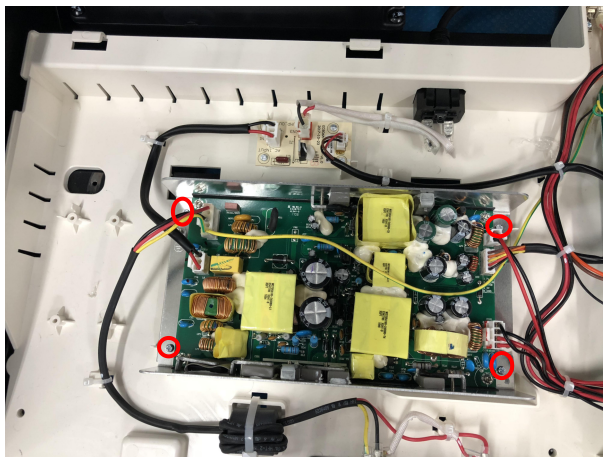


取出 4 颗螺丝，拔掉所有端子即可更换中心板

Remove 4 screws , discontent all the terminals

Take down the main PCB

B.电源板的拆卸 disassembly of the power PCBA

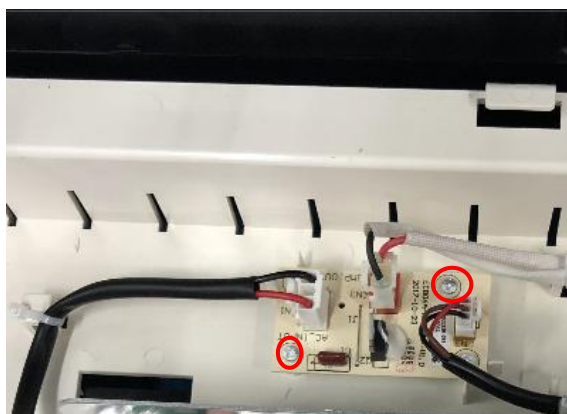


取出 4 颗螺丝，拔掉所有端子即可更换电源板

Remove 4 screws , discontent all the terminals

Take down the power PCBA

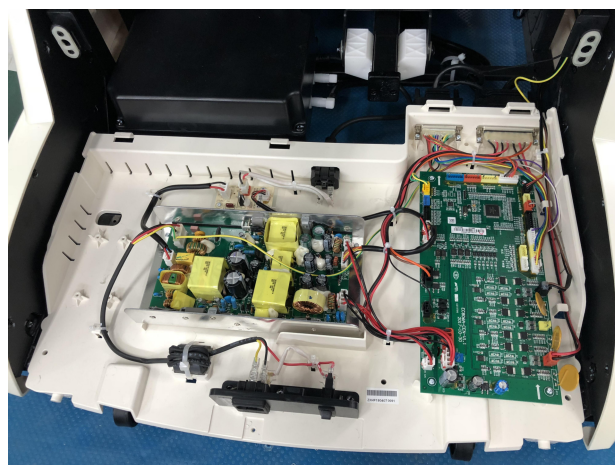
C.电源转接板的拆卸 disassembly of the power transfer PCBA



拆除 2 颗螺丝，拔掉所有端子，即可更换电源转接板

Remove 2 screws , discontent the terminals

Take down the PCBA



中心盒组件

Main PCB box unit