



中国·厦门蒙发利电子有限公司

Xiamen Healthcare Electronic Co., Ltd.

产品维修手册

Maintenance Service Manual

产品型号/Model: EI-8502A-TIT, Maxim 3D LE

适用电压规格/ Voltage Specification: 110-120V~

蒙发利集团·客服

By the Easepal's Customer Service Dept.

Catalogue

1.Error code list -----	1-2
2.Tools List -----	3
3.Replacement of backrest -----	4
4.Replacement of back cover -----	5
5.Replacement of rolling mechanism-1 -----	6
6.Replacement of rolling mechanism-2 -----	7
7.Replacement of rolling mechanism-3 -----	8
8.Replacement of rolling mechanism-4 -----	9
9.Replacement of upper cover of central box -----	10
10.Replacement of side plate -----	11
11.Leg Rest replacement-----	12
12.Replacement of sixteen-pin connector wire -----	13
13.Air Pump replacement -----	14
14.Replacement of Switching Power Supply、 Main PCBA and Fuse -----	15

Error code list



open: (1) Under the condition of shutdown, At the same time, hold down the three keys pointed to by the arrow, and you will hear a beep of the hand controller in a few seconds.
 (2) Select one of the two project patterns shown in the following figure as needed

Status indications

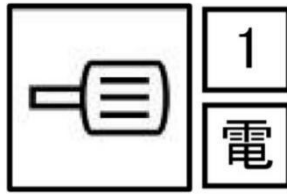
Error numbe	Error description	Possible cause	Exclusion method	Remarks
1	The hand controller button was pressed for more than 45s without letting go	Button stuck	1. Check the status of each button carefully 2. Replace the hand controller	
2	The hand controller does not communicate with the center board for more than 4s	Bad contact or fracture of inserting wire	1. Check or replace the plug-in cable 2. Replace the hand controller 3. Replace the center board	
3	The hand controller does not communicate with the center board for more than 4s	Bad contact or fracture of inserting wire	1. Check or replace the plug-in cable 2. Replace the rolling mechanism PCBA 3. Replace the Main PCBA	
40	The rolling mechanism walking motor position sensor is abnormal.	Position sensor is break down.	1. Replace the sensor 2. Check the connection 3. Replace the rolling mechanism PCBA	(1) Detection when function is turned on (2) Shut down automatically in the event of failure time. And not allowed to
41	Position coding anomaly of the rolling mechanism walking motor, That is ,the code disk is in the incorrect position.	1. The position sensor is broken 2. rolling mechanism overshoot	1. Replacement of sensors 2. Move the rolling mechanism to the initial height position 3. Replacement of rolling mechanism board	(1) real-time detection (2) Shut down automatically in the event of failure time. And not allowed to boot.

42	Abnormal speed sensor of the rolling mechanism walking motor, That is ,no change of speed code disk was detected in excess of 6S.	1. The motor is broken or blocked 2. Drive circuit device damage	1. Check the connection between the motor and the rolling mechanism board 2. Check or replace motor 3. Replacement of rolling mechanism board	(1) Detection when function is turned on (2) Shut down automatically in the event of failure time. And not allowed to boot.
44	the position sensor is abnormal of Core kneading motor, That is, no change of position code disk is detected over 10S.	1. The position sensor is broken 2. The motor is broken or blocked 3. Drive circuit device damage	1. Check the connection between the sensor and the rolling mechanism board 2. Replacement of sensors 3. Check or replace motor 4. Replacement of movement board	(1) Detection when function is turned on (2) Shut down automatically in the event of failure time. And not allowed to boot.
46	Abnormal speed sensor of Core kneading motor, That is, more than 6S did not detect the speed code disk change.	1. The motor is broken or blocked 2. Drive circuit device damage	1. Check the connection between the motor and the rolling mechanism board 2. Check or replace motor 3. Replacement of rolling mechanism board	(1) Detection when function is turned on (2) Shut down automatically in the event of failure time. And not allowed to boo.
47	One of kneading motor / walking motor / Backrest push rod / Leg Rest push rod over current	1. The load is too large 2. The motor is broken or blocked 3. Drive circuit device damage	1. Unload and running again 2. Check or replace rolling mechanism 3. Check or replace push rod 4. Check or replace Backrest push rod 5. Check or replace Main PCB	(1) Detection when function is turned on (2) Shut down automatically in the event of failure time. And not allowed to boot.
59	The count sensor is abnormal of the Backrest push rod.	1. Count sensor bad 2. Connection anomaly 3. The motor is broken or blocked 4. Drive circuit device damage	1. Check the connection 2. Check or replace the push rod 3. Replace the center board	(1) Detection when function is turned on (2) Shut down automatically in the event of failure time. And not allowed to boot.
63	The count sensor is abnormal of the Leg Rest push rod	1. Count sensor bad 2. Connection anomaly 3. The motor is broken or blocked 4. Drive circuit device damage	1. Check the connection 2. Check or replace the push rod 3. Replace the center board	(1) Detection when function is turned on (2) Shut down automatically in the event of failure time. And not allowed to boot
68	The Leg Rest Telescopic count sensor is abnormal .	1. Count sensor bad 2. Connection anomaly 3. The motor is broken or blocked 4. Drive circuit device damage	1. Check the connection 2. Check or replace the push rod 3. Replace the center board	(1) Detection when function is turned on (2) Shut down automatically in the event of failure time. And not allowed to boot

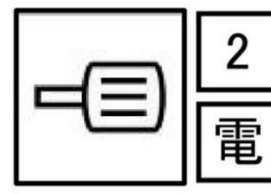
Tools List



Diagonal Cutter



Electric Screw Driver



Electric Screw Driver



Cable Ties



Cross Batch
2*6.35*65



Slot Type Screwdriver
2*6.35*100



Screwdriver

Replacement of backrest

1. Pass through the zipper head with a small Cable Ties and pull it apart (figure 1), as shown in figure 2 after opening at 7th position



figure 1

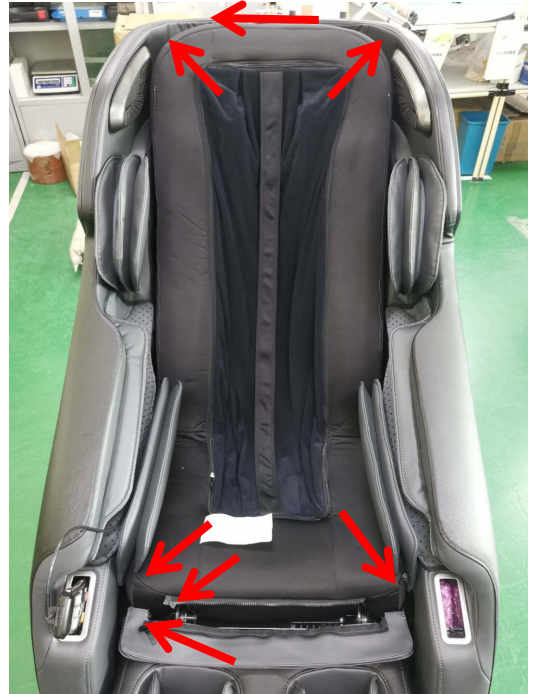


figure 2

2. Put on the new Backrest and zip up 7th position zippers as shown in figure 3 below



figure 3

Replacement of back cover

1. Run the massage chair to its original state, and then cut off the power supply.
2. Pull out the cloth pin on the back cover vertically as shown in figure 1 and remove the four screws in figure 2.
3. Press down, pull the back cover backward and pull out a certain angle, and then pull it out toward the top of the slope, as shown in figure 4.

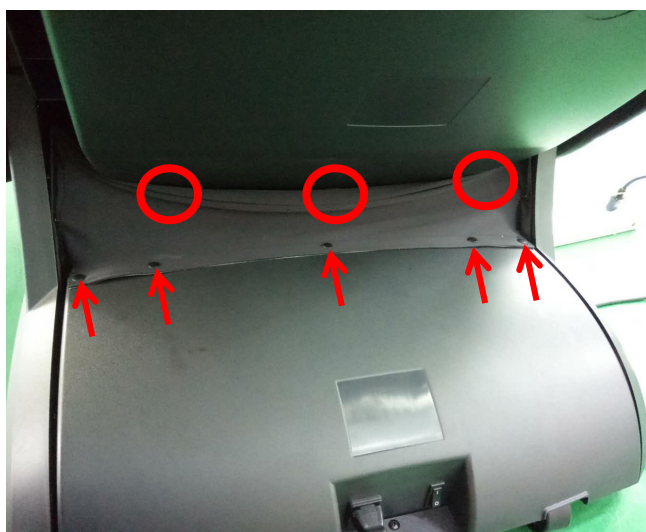


figure 1



figure 2



figure 3

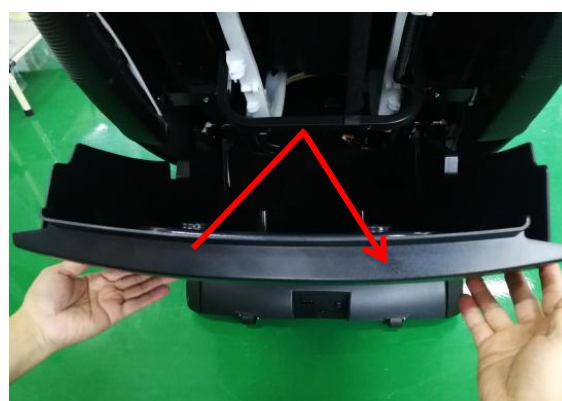


figure 4

Replacement of the rolling mechanism -1

- 1.Press P4 to remove the backrest.
- 2.Remove the flannel fabric (figure 1-2)
- 3.Remove the left and right baffle on the guideway (figure 3)
- 4.Remove the back cover, push the rolling mechanism down firmly, push the rolling mechanism to the left and right baffle on the guideway position (figure 4)



figure 1



figure 2

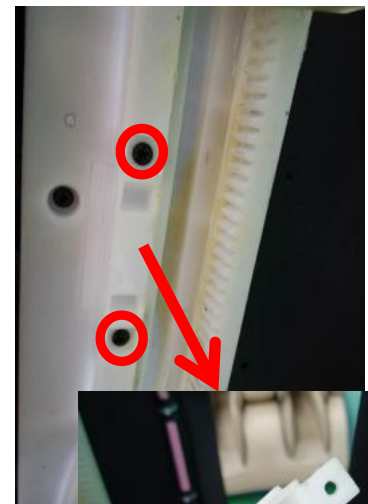


figure 3

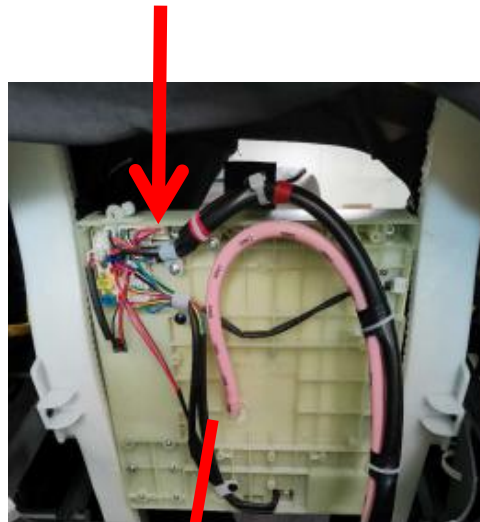


figure 4

Replacement of the rolling mechanism -2

1. Front gear first out, then rear gear out (figure 1-2), you can take out the rolling mechanism from the guideway (figure 3)

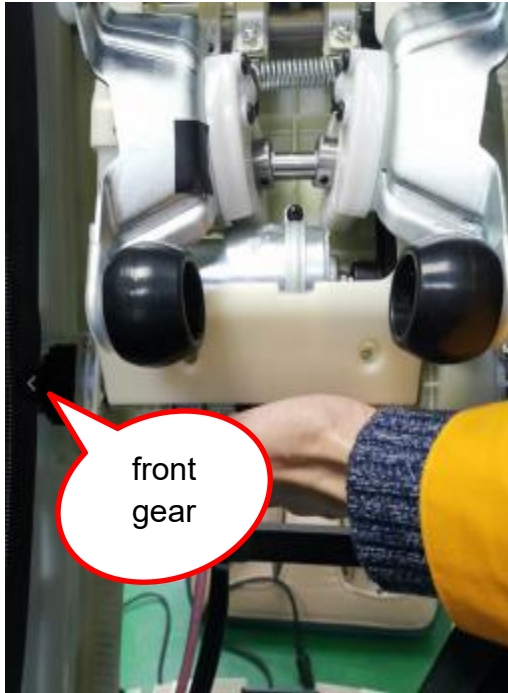


figure1



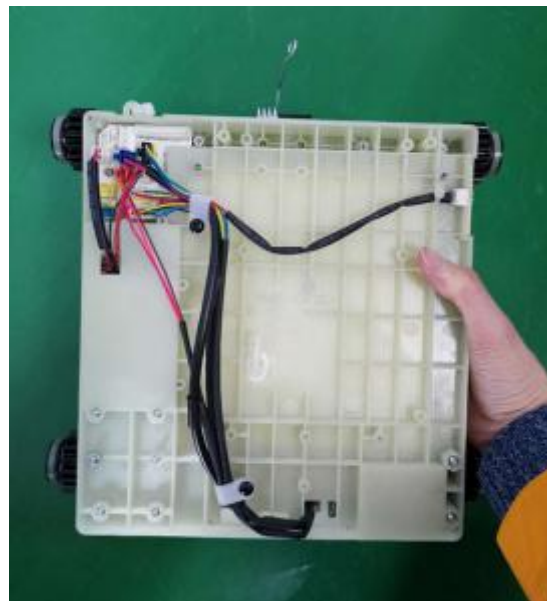
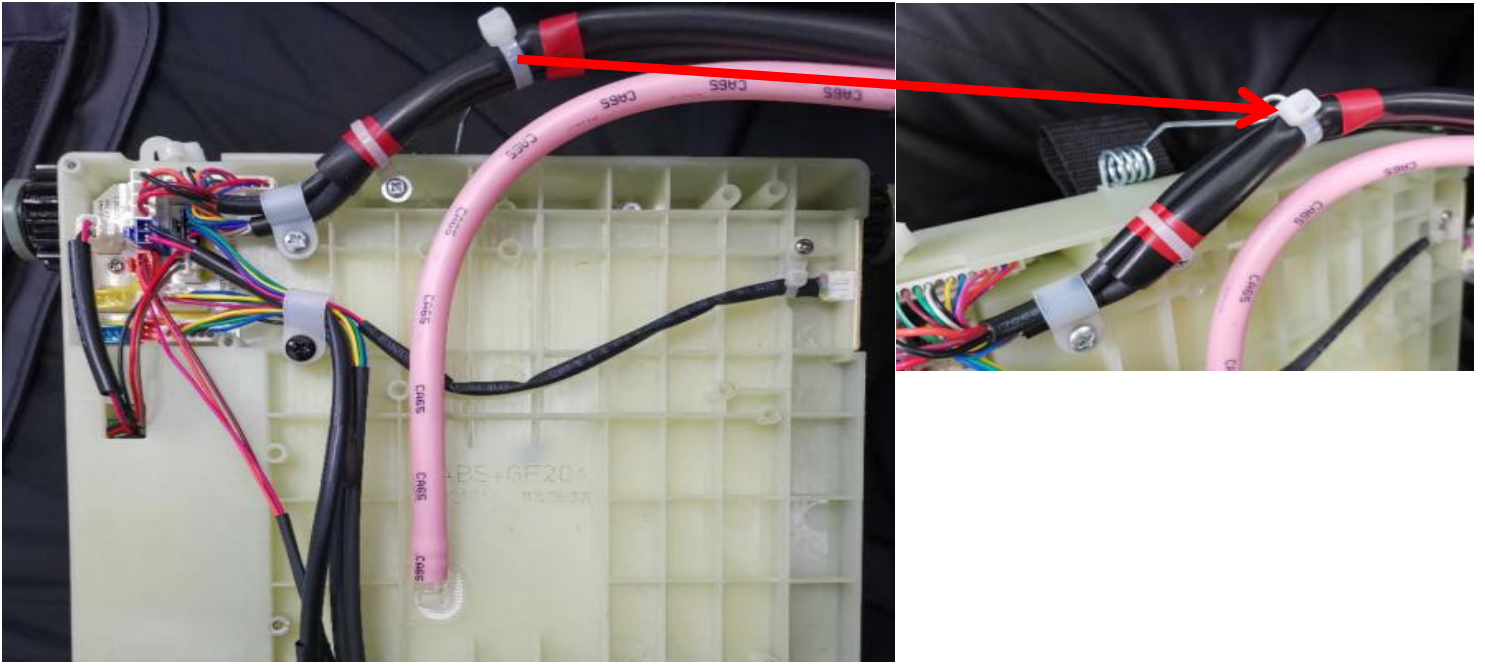
figure 2



figure 3

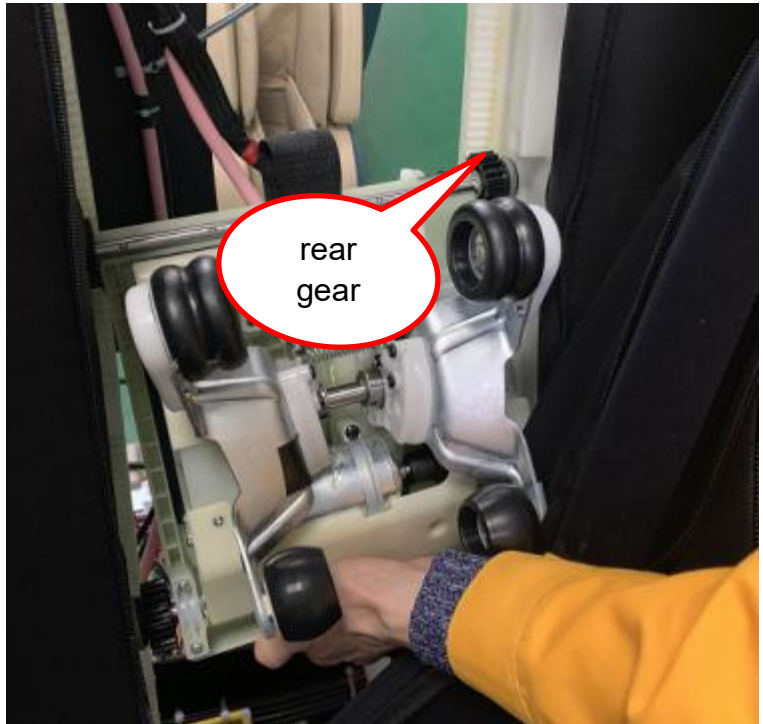
Replacement of the rolling mechanism -3

Use a screwdriver to remove the two screws of the sixteen-core cable, use diagonal pliers to cut off the buckle of the sixteen-core cable, unplug the two terminals on the movement board, and unplug the air pipe on the rolling mechanism, then you can take out rolling mechanism.



Replacement of the rolling mechanism -4

- 1.The rolling mechanism side is stuffed in (figure 1)
- 2.The rear gear is put into the guide rail from the position where the baffle is removed, and then the front gear is put into the guide rail (figure 2)
- 3.After putting it in, the movement should be pushed down, and the rear gear should be under the position of the guide rail removal baffle to lock the baffle (figure 3)



Replacement of upper cover of central box

1.Run the massage chair to the initial state, then cut off the power supply and unplug the plug;

2.Pull out 5 cloth pins in turn perpendicular to the direction of the upper cover, as shown in figure 1;

3.Remove the screws as shown in figures 2 and 3

4.Hold the inner side of the top cover of the center box on the left hand, hold the outer edge of the upper cover on the right hand, gently drag it out and remove the upper cover, as shown in figure 4

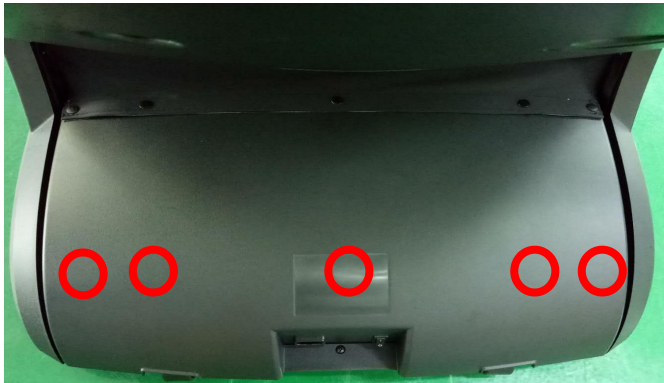


figure1

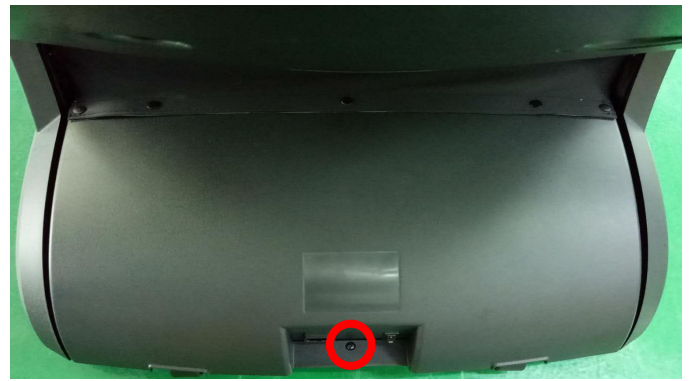


figure2

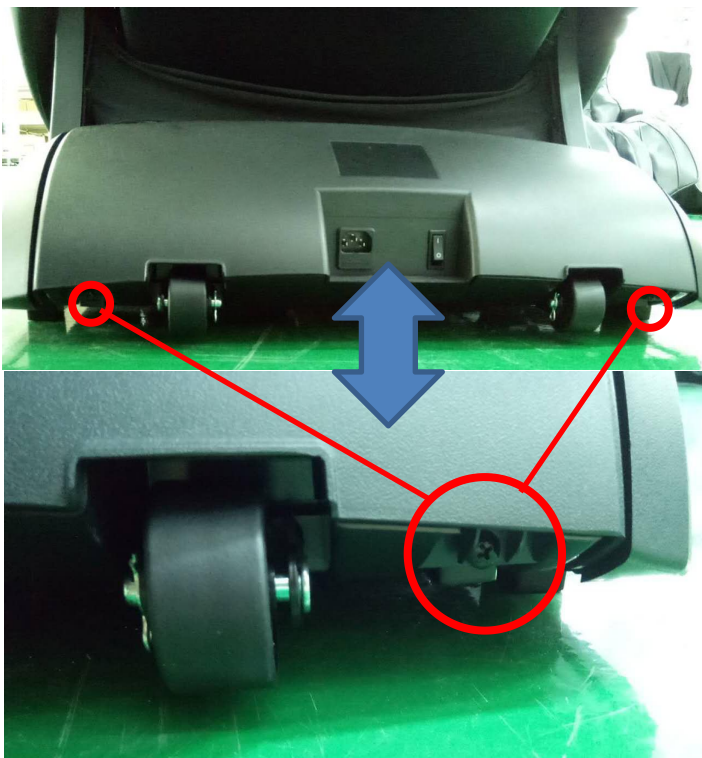


Figure 3

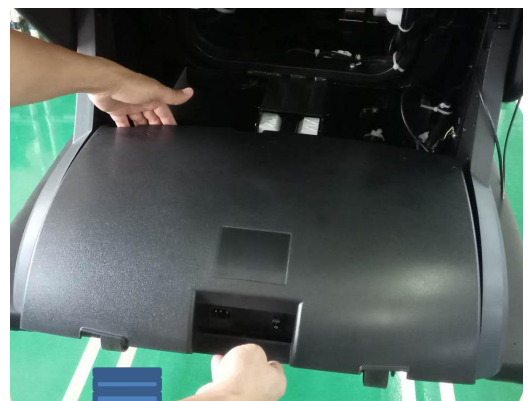


Figure 4

Replacement of side plate

1. Run the massage chair to its original state, then cut off the power supply and unplug it;
2. Press P5 to remove the back cover and cut the inner band of the lower cover with oblique pliers, as shown in figure 1;
3. Cut off the tie belt that binds the hand controller to the side board, as shown in figure 2
4. Remove the two screws on the back rack, as shown in figure 3;
5. Remove the screw at the front end of the side plate from below the Leg Rest as shown in figure 4;
6. Remove the hood cover, as shown in figure 5;
7. Remove 7 screws on the hood, as shown in figure 6;
8. Unplug the 2 connection terminals on the hood, as shown in figure 7;
9. Remove the side plate and remove 3 connecting air pipe and 1 connection terminals from the side plate, as shown in figure 8-9.

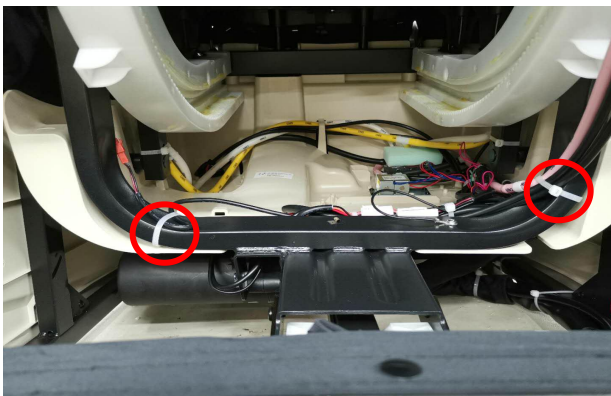


Figure 1

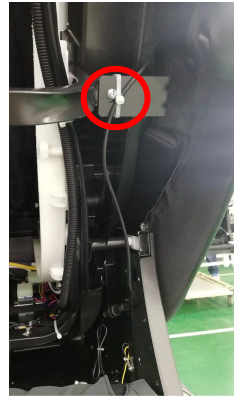


Figure 2

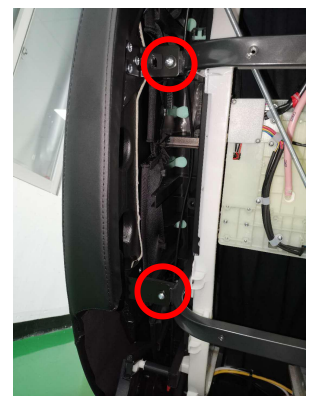


Figure 3

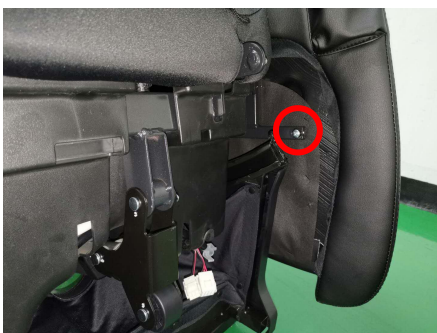


Figure 4



Figure 5

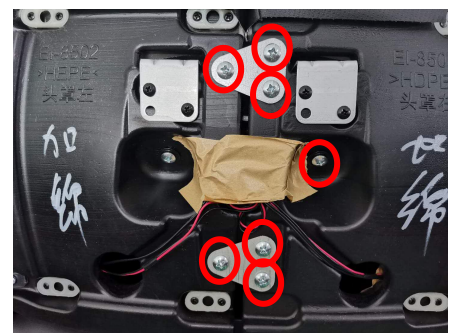


Figure 6



Figure 7



Figure 8



Figure 9

Replacement of Leg Rest

1. Unzipper as shown in figure 1;

2. Break the DK Card bolt open with your fingers or pliers and take it up, as shown in figure 2;

3. Pull the black cloth up, remove the air pipe and power cord connector, as shown in figure 3-4



Figure 1



Figure 2



Figure 3

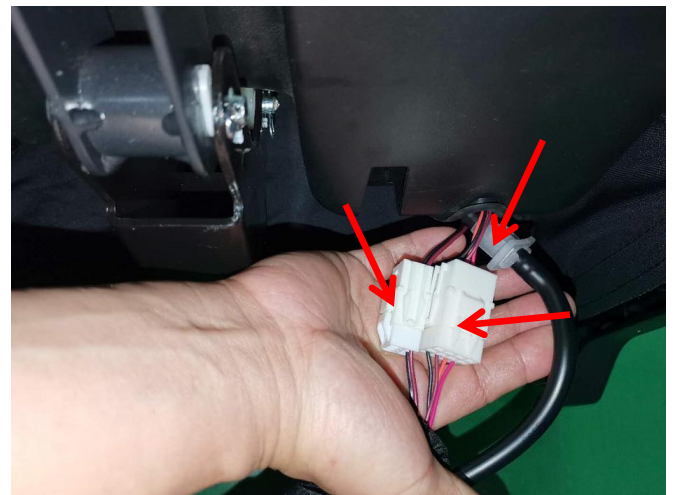


Figure 4

Replacement of sixteen-pin connector wire

1. Press P5 to remove the back cover, let the rolling mechanism come down a little, and remove the two screws as shown in Figure 1.

2. Then remove the 2 screws shown in Figure 2, unplug the 2 terminals of the cable, cut off the cable tie, and pull out the air pipe.

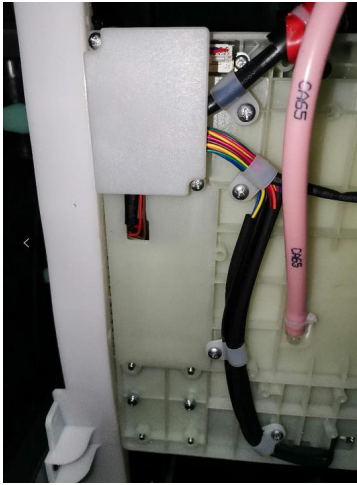


Figure 1

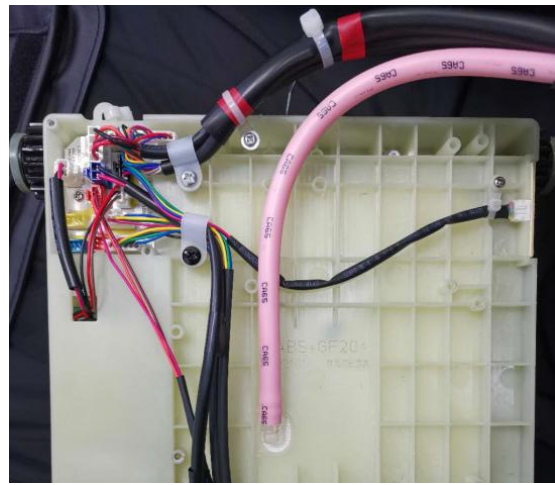


Figure 2

3. Cut off the two cable ties as shown in Figure 3, and pull out the air pipe and butt terminal as shown in Figure 4, cut off the cable ties.



Figure 3



Figure 4

Replacement of Air Pump

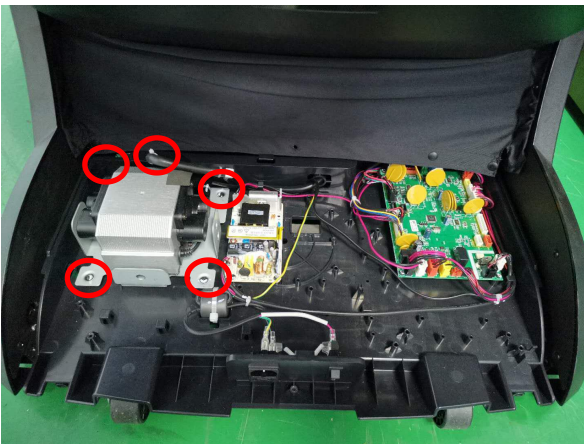
1.Remove 5 cloth sleeve pins on the top cover of the central box



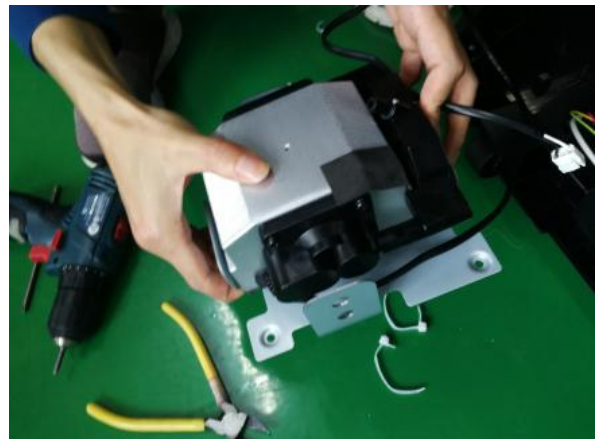
2.Remove 3 screws



3.Remove 4 screws of the air pump, then cut off the cable tie to pull out the air pipe, and pull out the plug terminal on the main PCBA.

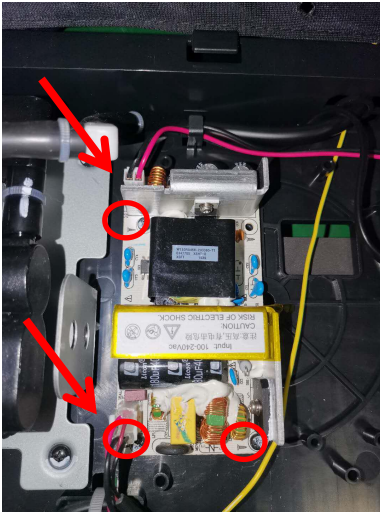


4.Use needle-nose pliers to pull out the 4 rubber feet on the iron frame to remove the air pump.



Replacement of Switching Power Supply, Main PCBA and Fuse

1.Replacement of Switching Power Supply: Remove the 3 screws on the switching power supply board and unplug the 2 connecting terminals on the switching power supply board



2.Replacement of Main PCBA: Unplug the terminal on the Main PCBA and remove 4 screws to remove the Main PCBA.



3.Replacement of Fuse: Remove the fuse holder from the socket, then you can replace the fuse.

