


5623A Massage Chair After sales Service Guide

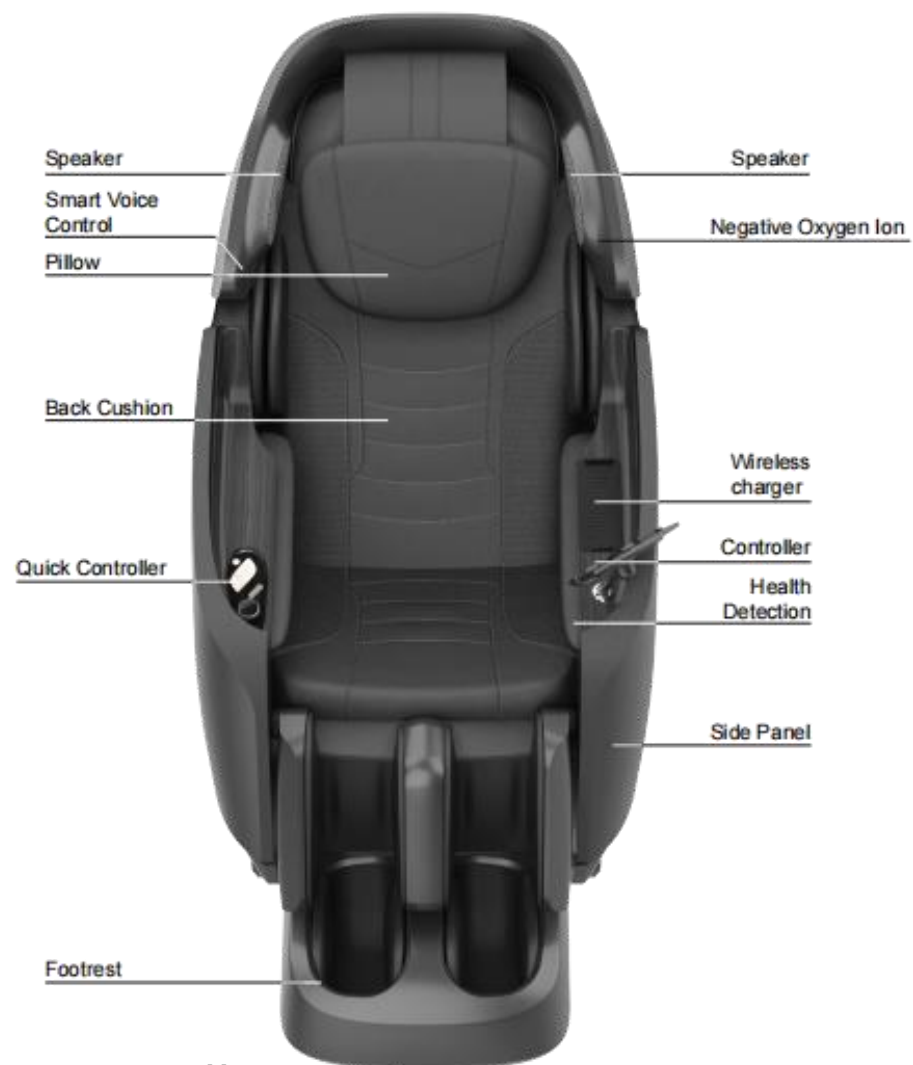


catalogue

- 一、Product Introduction
 - 二、Massage chair tools and usage
 - 三、Working principle of product circuit
 - 四、Internal structure and disassembly of massage chair
 - 五、Massage chair malfunction representative
- 
- A decorative graphic consisting of several overlapping circles of different colors (blue, orange, yellow, grey) with soft shadows, arranged in a cluster on the right side of the page.

一、Product Introduction

Product Parts



一、Product Introduction

Specifications

Description	Specifications
Model No.	4D Orion Duo
Rated Voltage	110-120V~
Rated Frequency	60Hz
Rated current	2.3A
Timer	5/10/15/20/25/30 minutes
Dimension of Packing Carton(LxWxH)	Product carton: 54.3" x 33.3" x 51.6"
Weight	Product gross weight: 318.6 lbs
	Product net weight: 275.6 lbs
Dimension(LxWxH)	Upright: 61.8" x 31.5" x 49.2"
	Redine: 79.9" x 31.5" x 45.3"
Usage condition	Environment temperture: 50°F-104°F
	Contrasting humidity: 30-85RH
Storage condition	Storage temperture: 68°F-140°F
	Storage humidity level: 30-85RH
Safety feature	Equipped with overheated and power surge safety protection.
Using benefits	Increasing blood circulation; Relieving muscular fatigue



This equipment contains a certified radio transmission module:

FCC ID: YMX-ATS2853

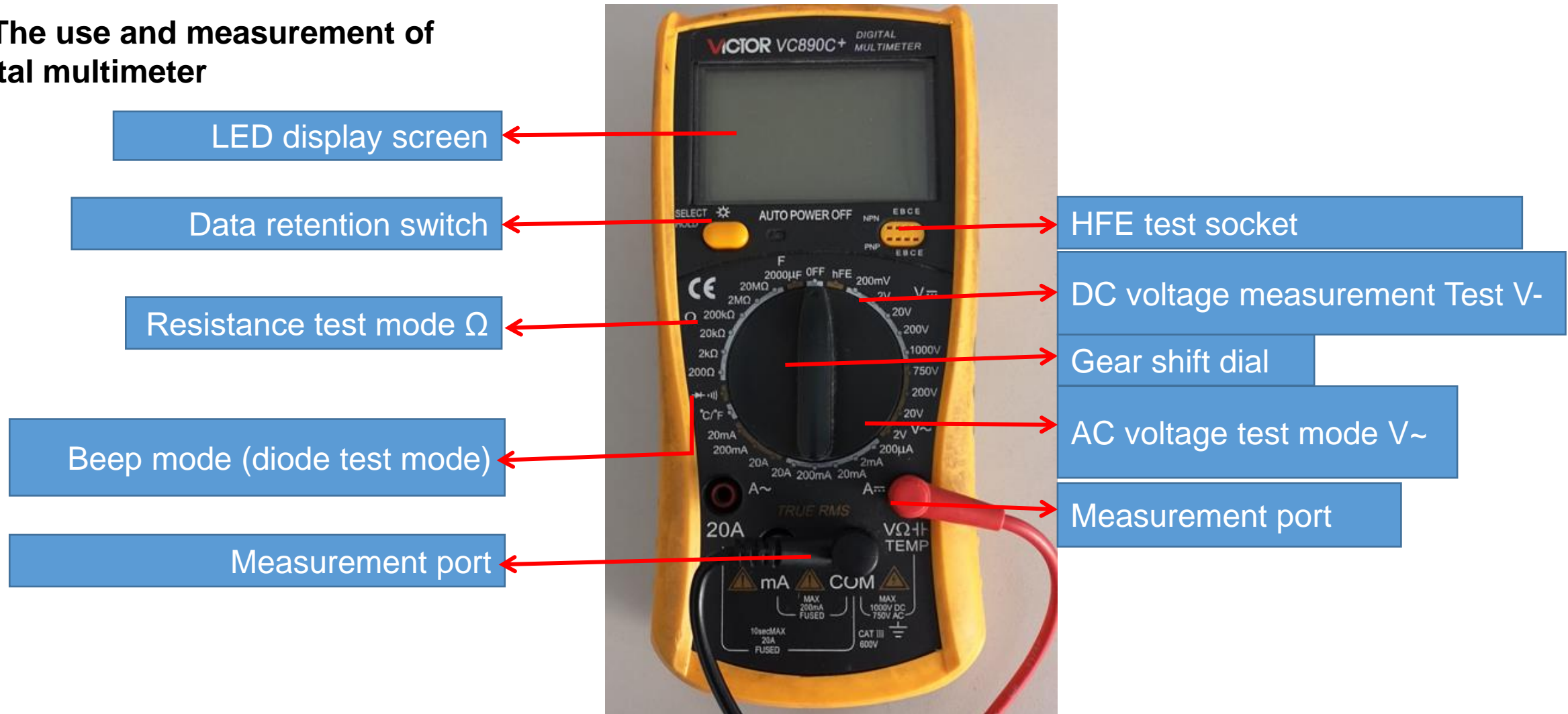
IC: 7284A-ATS2853

二、Massage chair tools and usage

1.means of preparation

					
十字螺丝刀	老虎钳 尖嘴钳	电烙铁	扳手	电动螺丝刀	电工胶带
					
电笔	六角扳手	万用表	24V/DC电源	扎带	压线帽

2、 The use and measurement of digital multimeter



2.1 Function and Function of Test Gear

Data retention switch: Memorizes measurement data for easy comparison of test data.

Peak sound mode: measure the quality of the secondary pipe, the continuity of the circuit, and the alarm function.

Resistance test mode: measure the quality and resistance of the resistance.

DC voltage range: measure DC voltage.

AC voltage range: measure AC voltage.

VΩ / COM: VΩ Red probe port (+) during testing, black probe port (-) during COM testing

Note: When conducting resistance or voltage tests, it is necessary to choose an appropriate range. If the range is too small, it cannot be measured. If the range is too small, it cannot be measured

Large testing error range; When measuring voltage without knowing the voltage magnitude, choose a larger range for measurement.

2.2、 Measurement of line continuity/disconnection



open circuit

As shown in the left figure, first set the multimeter to beep mode and power it on
When the switch is turned on, the multimeter displays "0; Then take two of them

→ The probe contacts the metal wire ends of the red wire in the figure,
At this point, if the multimeter still shows "1." without any change, it indicates that
There is an open circuit in the middle of the wire, indicating that the circuit is not connected.



Conduction

→ As shown in the left figure, test using the same method as described above, such as displaying on a multimeter
Display the number ". 002" or ". 00N" and sound an alarm
If there is a sound, it indicates that the wire is conducting.

2.3、 Measurement of AC voltage



As shown in the above figure: Measure the household plug-in power supply (220V), select a range of 750, and test. The result shows "224", indicating that the actual voltage of this set of sockets is 224V at this moment (the switch is pressed)

Go, so there is electricity and the lights are on.



As shown in the above figure: Measure our household plug-in power supply (220V), with a range of 750, and test it. The result shows "001", indicating that the actual voltage of this socket group is 0V at this moment (the switch is not pressed,

So there's no power and the light isn't on.

2.4、 Measurement of DC voltage



As shown in the above figure, the test result shows "1.58", indicating that the voltage at both ends of this battery is 1.58V, with the red probe connected to the "+" pole of the battery and the black probe connected to the "-" pole of the electromagnetic field.



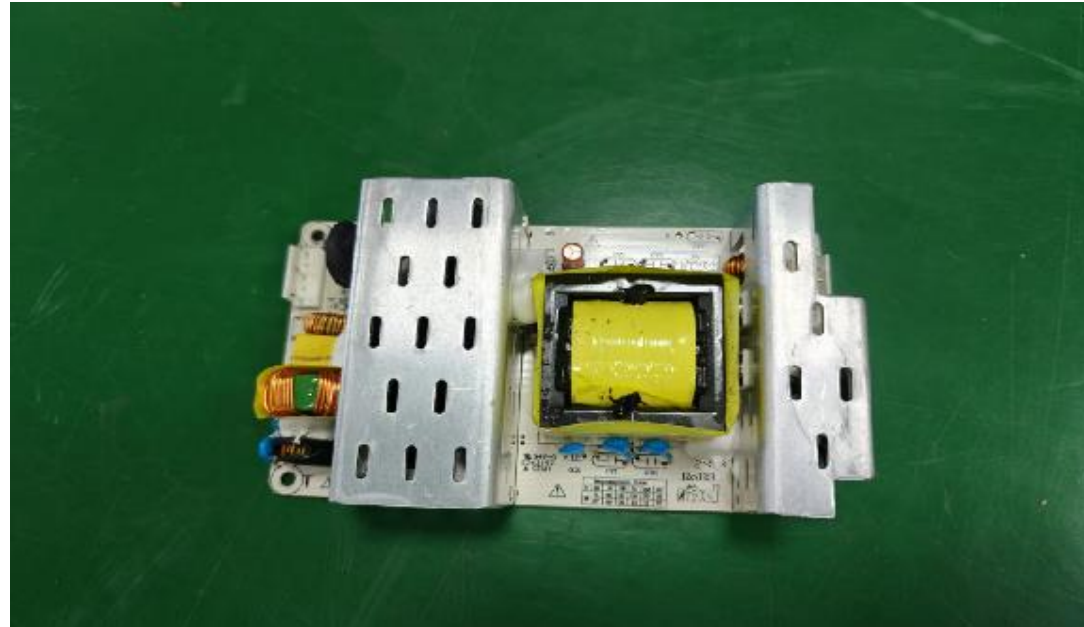
As shown in the above figure, the test result shows "-1.58", indicating that the voltage at both ends of this battery is 1.58V, with the red probe connected to the battery's "-" pole and the black probe connected to the electromagnetic "+" pole..

3、 Working principle of product circuit

1、 Physical wiring diagram of the center board:

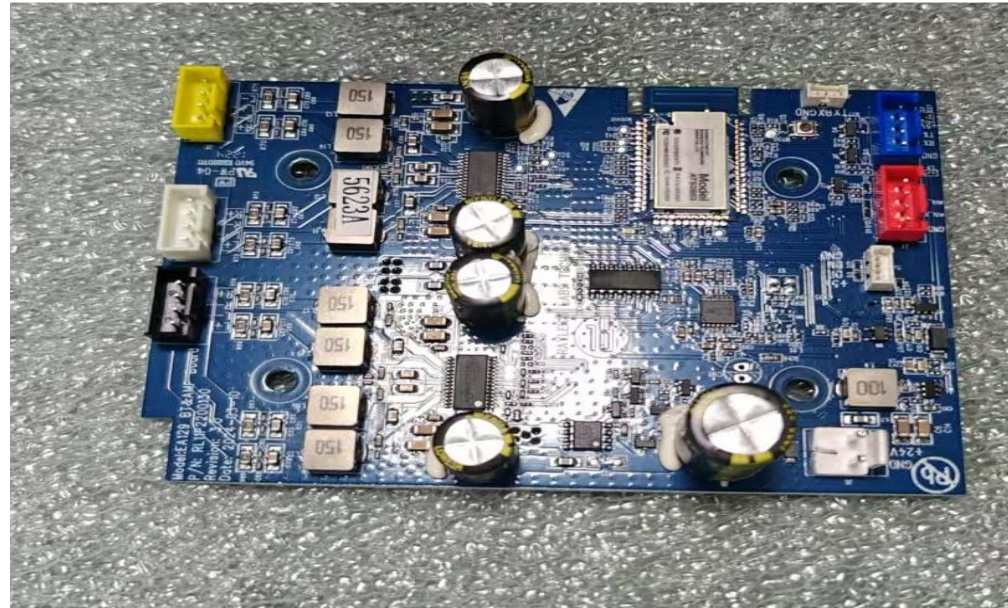
3、 Working principle of product circuit

2. Wiring diagram of switch power board:



3、 Working principle of product circuit

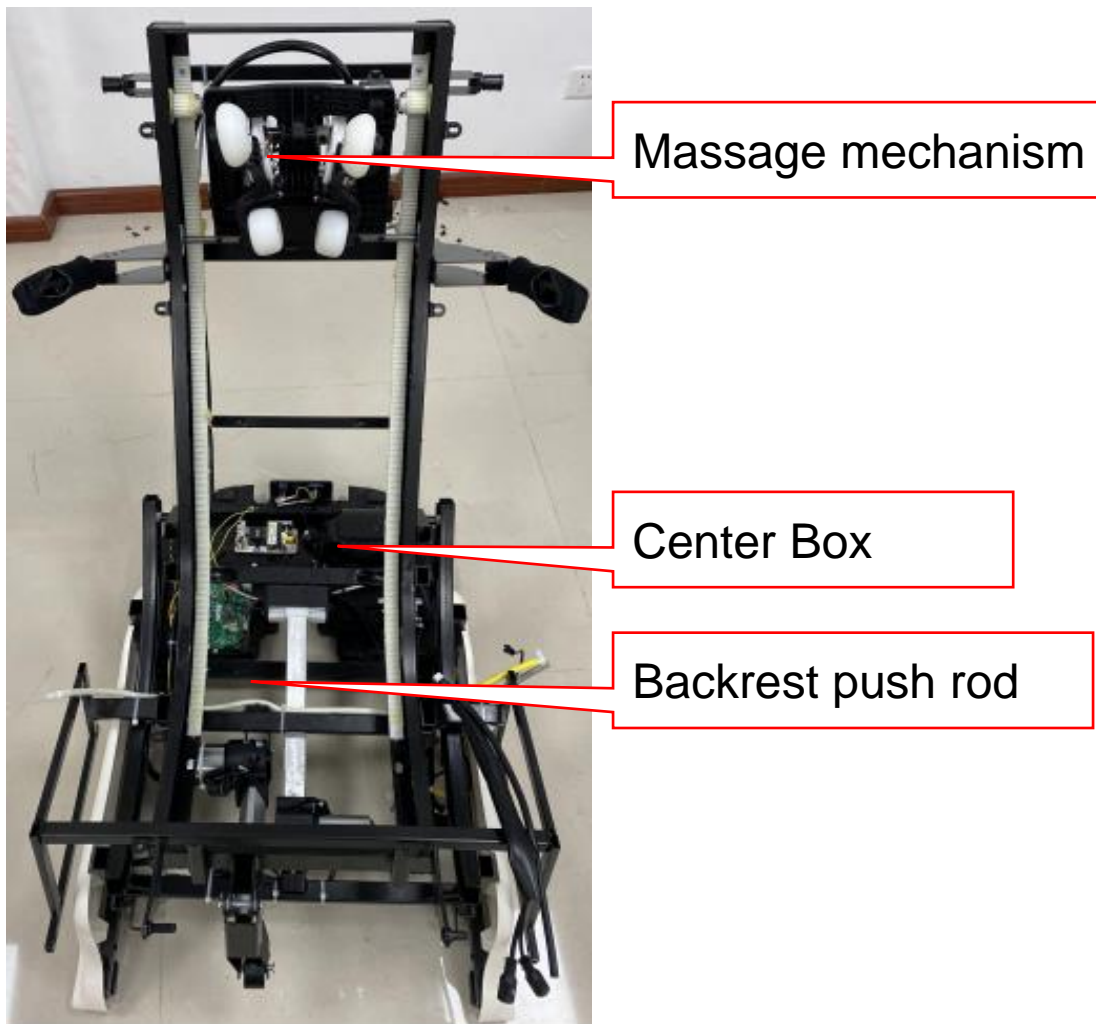
3, Bluetooth amplifier board wiring diagram:



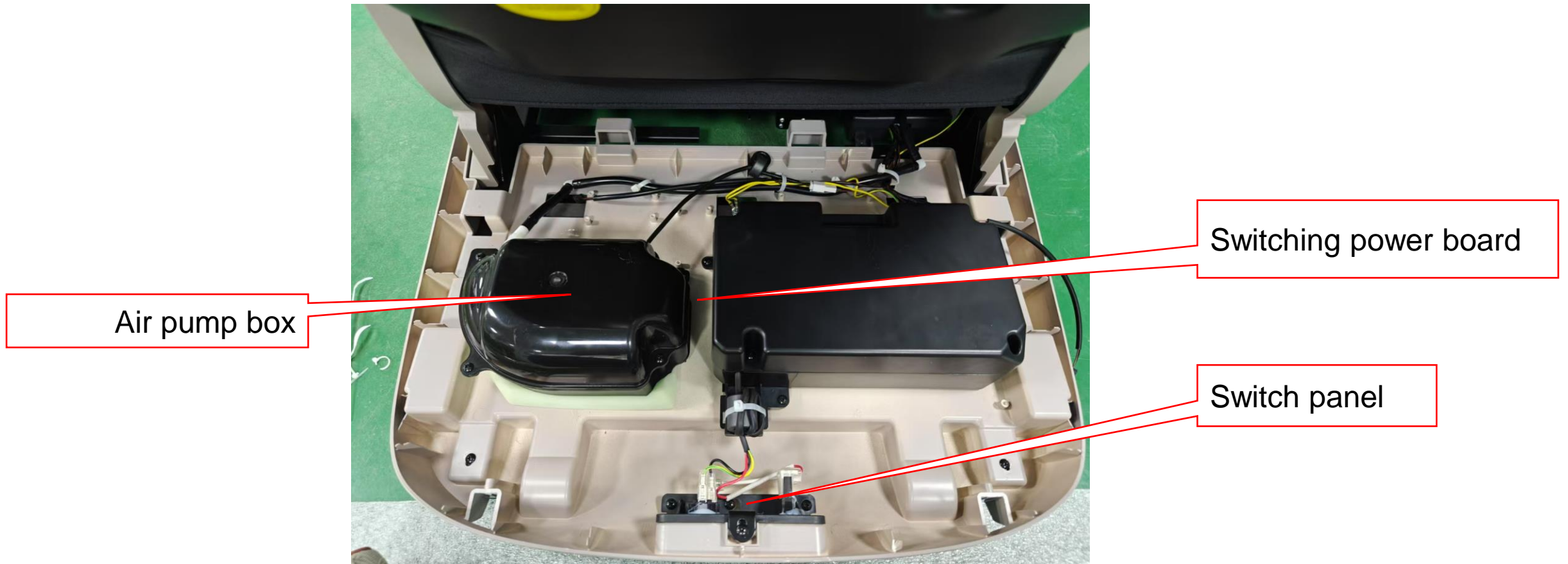
4、 Internal structure and disassembly of massage chair

1、 Internal structure diagram:

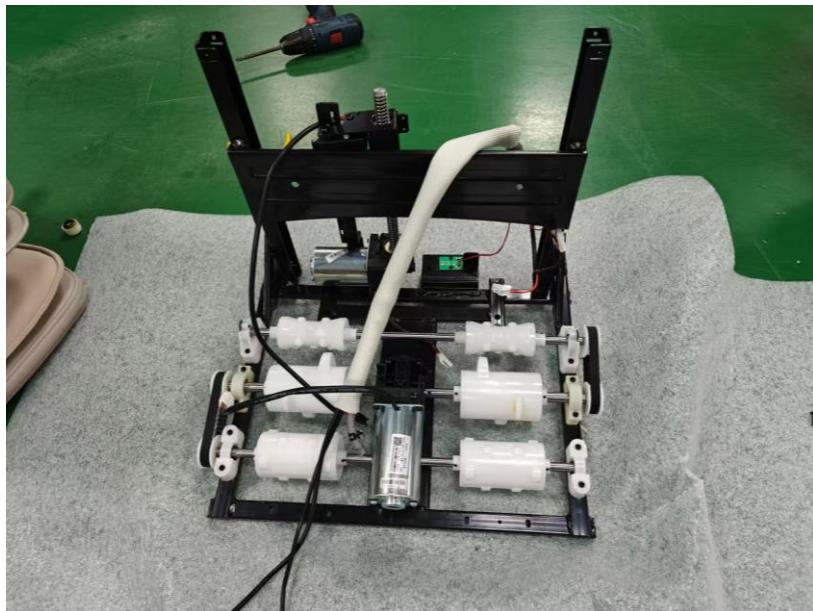
1.1、 Internal structure diagram (host):



1.2、 Internal structure diagram (center box):



2、 Schematic diagram of calf structure:



Calf hardware and foot roller components

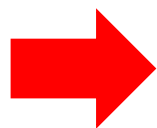


Calf component

3.Pillow disassembly instructions:



Open the zipper and remove the pillow

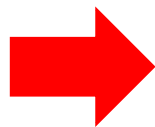


pillow

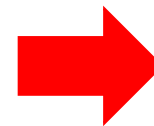
4, Instructions for disassembling the cloak cushion:



Open the zipper



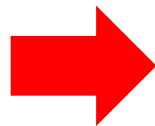
Open the zipper connecting the calf



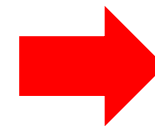
Open the left and right zippers



Cut off the zip ties and heat shrink tubing

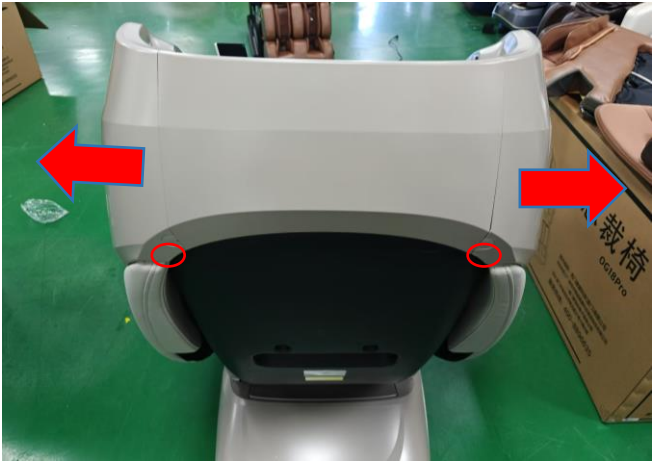


Open the left and right zippers

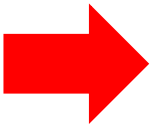


Remove the cloak cushion

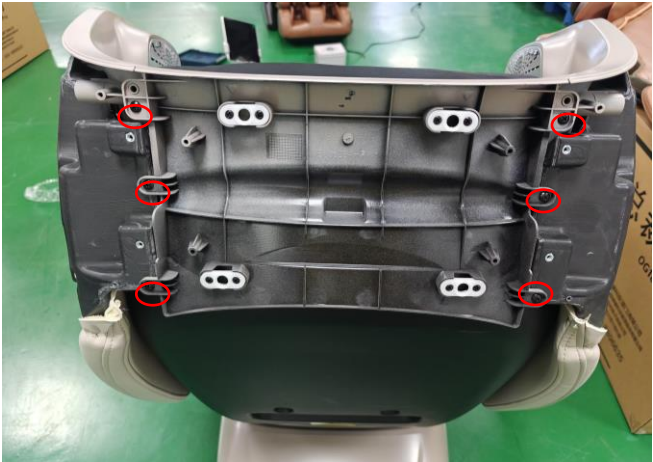
5, Disassembly instructions for left and right side panel components:



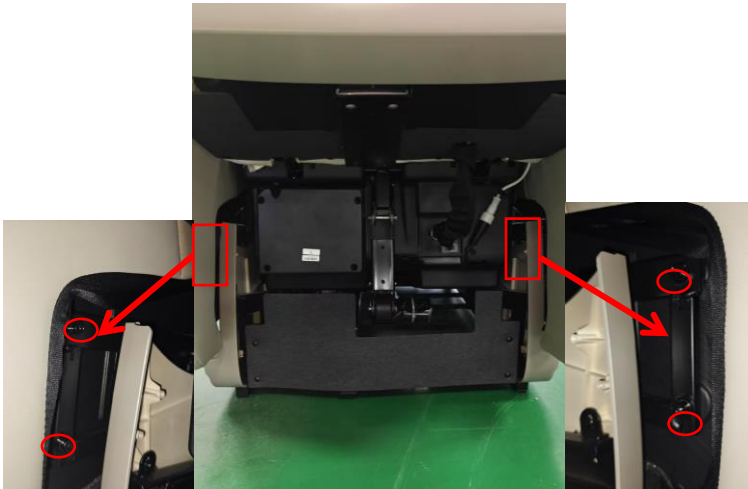
Remove the two fixing screws



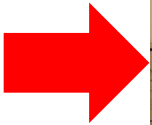
Remove the four fixing screws



Remove 4 screws



Lift the calf and remove 2 screws on each side

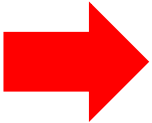
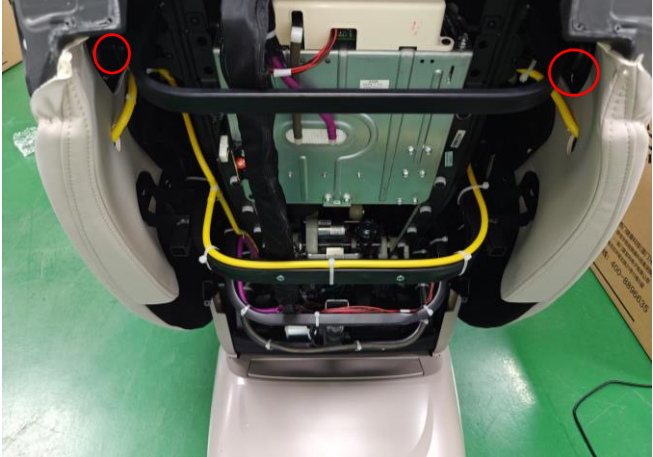


Remove the four screws and remove the backrest back cover



Remove the left decorative piece (remove the right side as the left side)

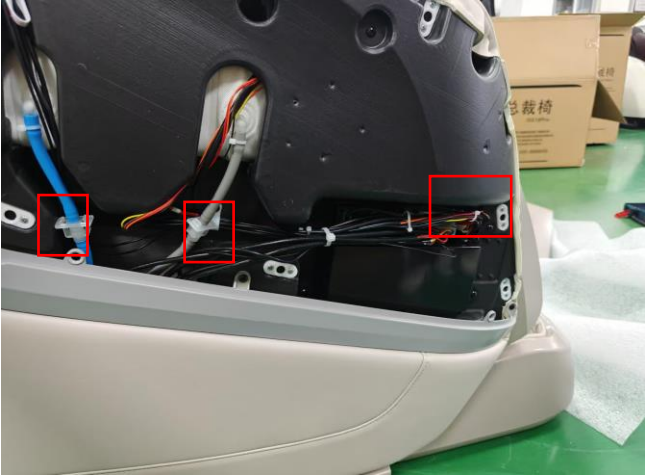
5, Disassembly instructions for left and right side panel components:



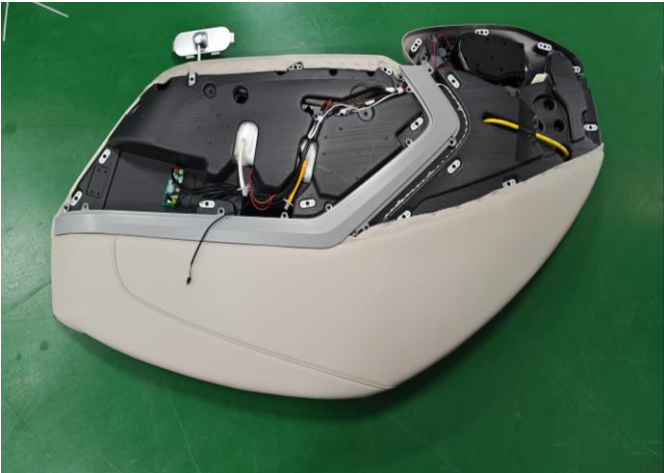
Remove the fixing screws of the left and right side panels

Lift the side panel upwards, cut off the zip ties, and remove the trachea

Unplug all connected terminals and air tubes, and remove the left side panel



Unplug all connected terminals and air tubes, and remove the right side panel

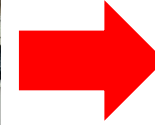
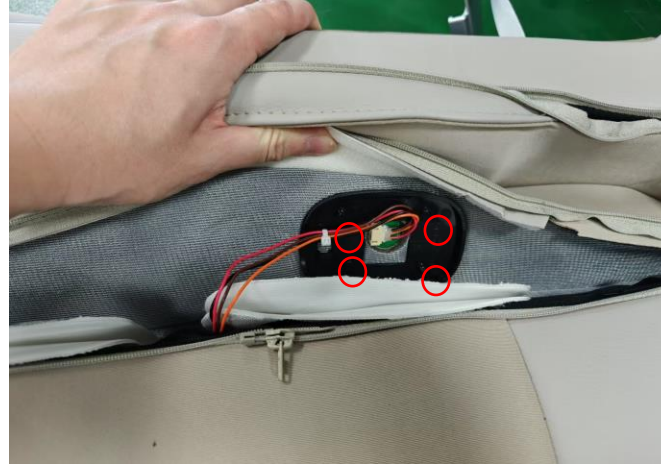
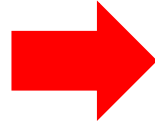


Left side panel



Right side panel

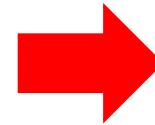
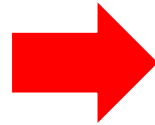
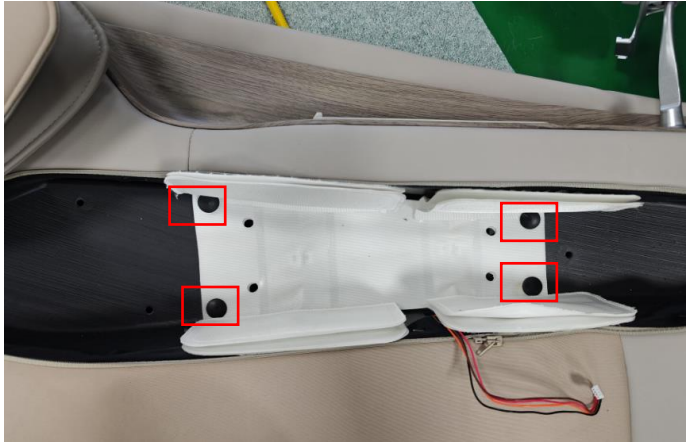
5.1, Internal disassembly instructions for side panel components: disassembly instructions for armrest leather cover, airbag, and soreness detection handle. Demonstrate the disassembly of the armrest on the left side panel component, and the disassembly of the right side panel should be consistent



Open the zipper and remove the arm leather cover

Remove 4 screws, cut off the zip ties, and unplug the terminals

Remove the soreness detection handle



Remove 4 screws and unplug the trachea

Remove the airbag

After removing the fixing nut, take off the controller bracket

5.1, Internal disassembly instructions for side panel components: disassembly instructions for armrest leather cover, airbag, and soreness detection handle. Demonstrate the disassembly of the armrest on the left side panel component, and the disassembly of the right side panel should be consistent



Hand controller bracket

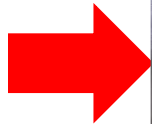
5.2, Internal disassembly instructions for side panel components: disassembly instructions for side panel decorative parts and speakers. Demonstrate the left side panel component, and ensure consistent disassembly of the right side panel



Remove the screws and remove the decorative parts



Side panel decorative parts



Remove the screws



Remove the horn component



Unplug the terminal and remove the side panel adapter board

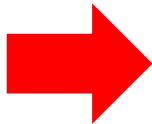


Left side panel adapter board

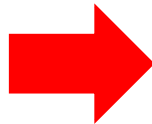
6, **Disassembly instructions for Bluetooth amplifier board, note: Refer to (5 disassembly instructions for left and right side panel components) to remove the right side panel component**



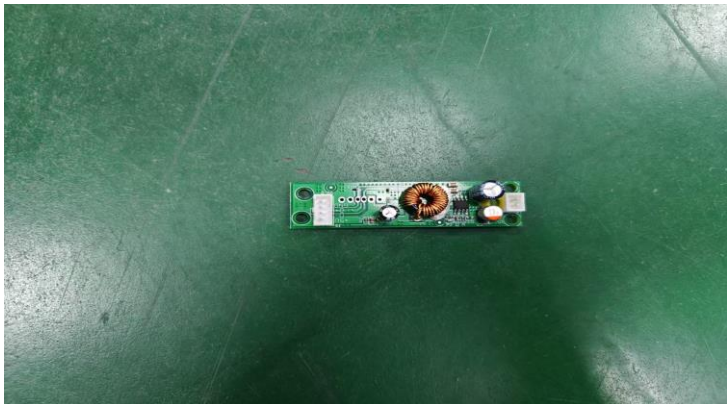
Remove 4 cross screws from 4 boards and unplug the terminals



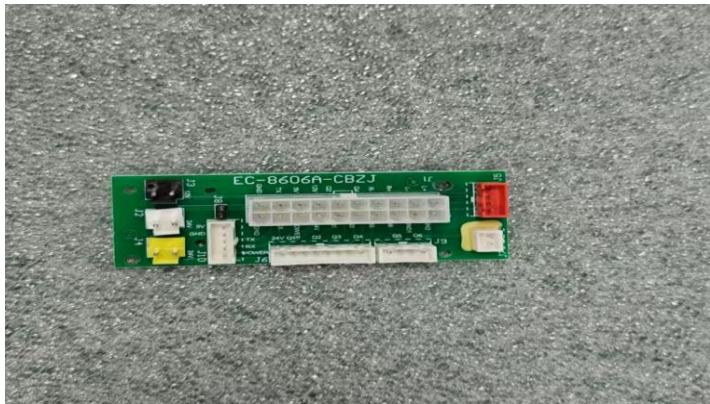
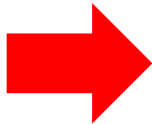
Bluetooth board



Song storage board



USB charging pad

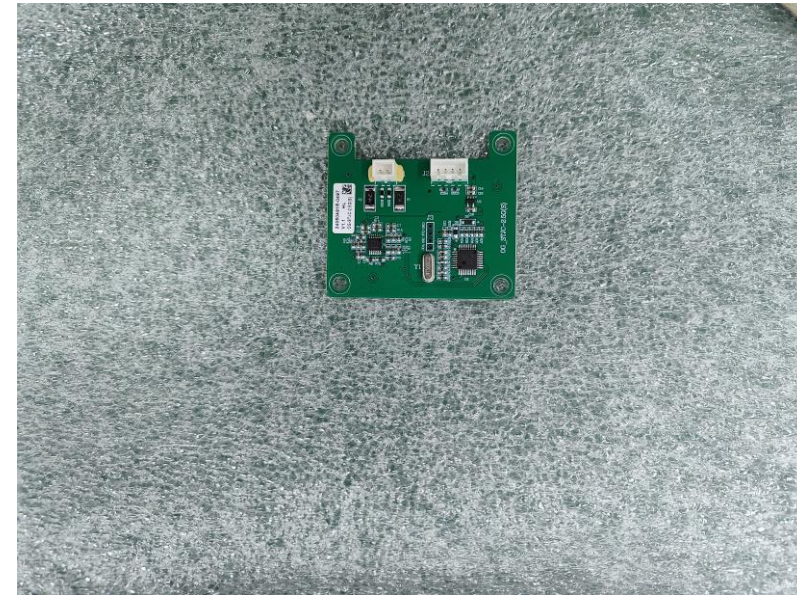


Right adapter board

7, Instructions for disassembling the soreness detection board: Note: Refer to (5 Instructions for disassembling the left and right side panel components) to remove the left side panel component



Remove one screw and disconnect one terminal



Remove the soreness detection board

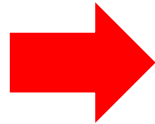
8, Disassembly instructions for left and right shoulder leather covers: Note: Refer to (5 Disassembly instructions for left and right side panel components) to remove the left and right side panel components



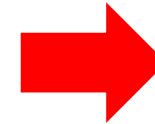
Tear open the magic buckle and remove it (2 screws on each side)



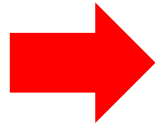
Right shoulder airbag and jacket



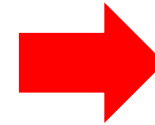
Pull out one trachea on each side to remove the left and right shoulders



Remove the two screws on the right shoulder



Remove the two screws on the left shoulder



Left shoulder airbag and jacket

9, Manual controller disassembly instructions: Note: Refer to (5 disassembly instructions for left and right side panel components) to remove the right side panel component



Cut off the cable tie and unplug one terminal



Remove the controller

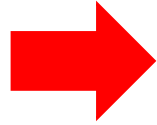
10, Disassembly instructions for movement components:
Please note that the cloak pillow should be disassembled first (refer to 3 and 4)



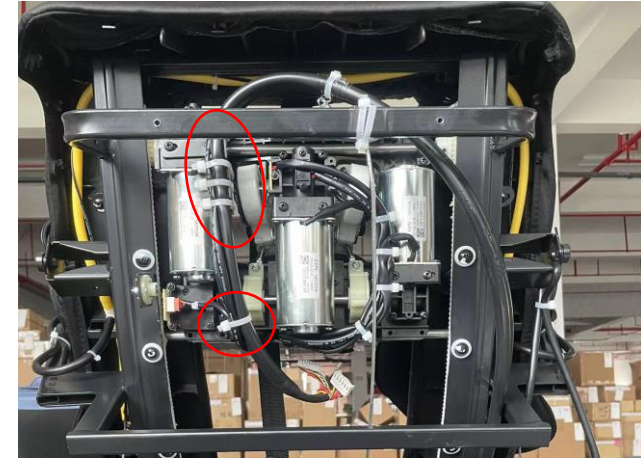
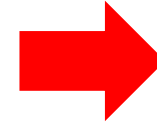
Remove 4 screws and take off the backrest back cover



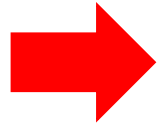
Remove one screw



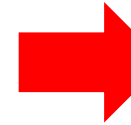
Remove the 6 screws securing the front backrest



Cut off the zip ties

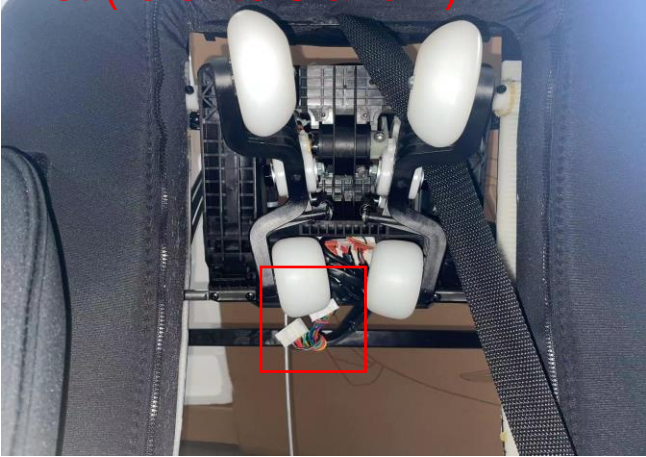


Use a small zip tie to unzip the fleece fabric

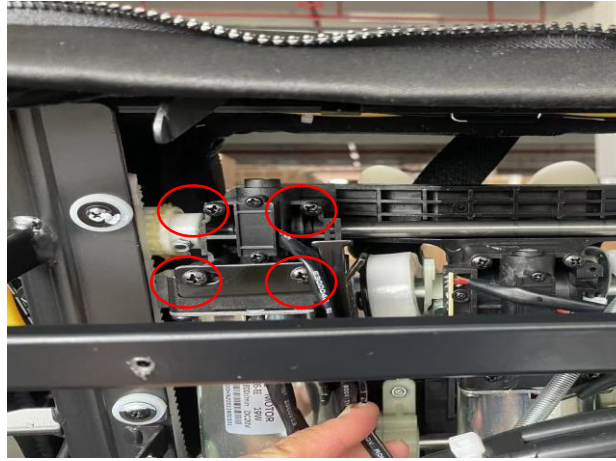
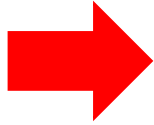


Remove the 3 screws on the upper cover of the movement adapter plate

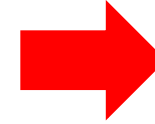
10, Disassembly instructions for movement components: Please note that the cloak pillow should be disassembled first (refer to 3 and 4)



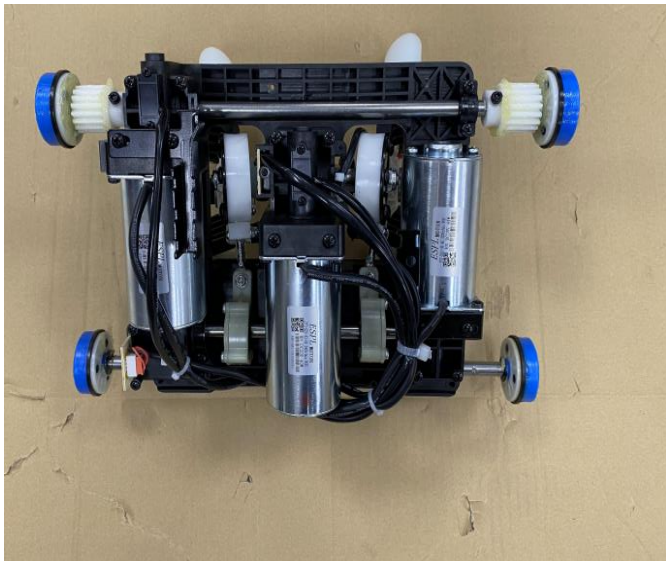
Remove 2 back wire terminals



Remove the 4 screws of the walking motor, be careful that the movement will fall down

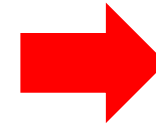
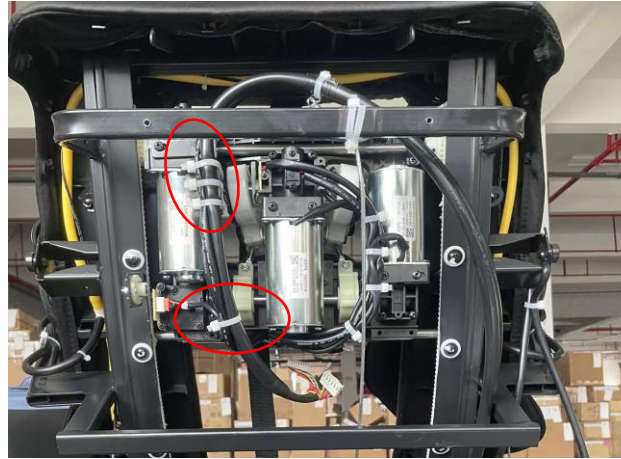
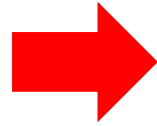


Push the front backrest forward to a certain angle to ensure there is enough space to remove the movement. Remove the 4 screws and 2 anti-collision screws that fix the crossbeam (a total of 6 screws on both sides)



Remove the movement

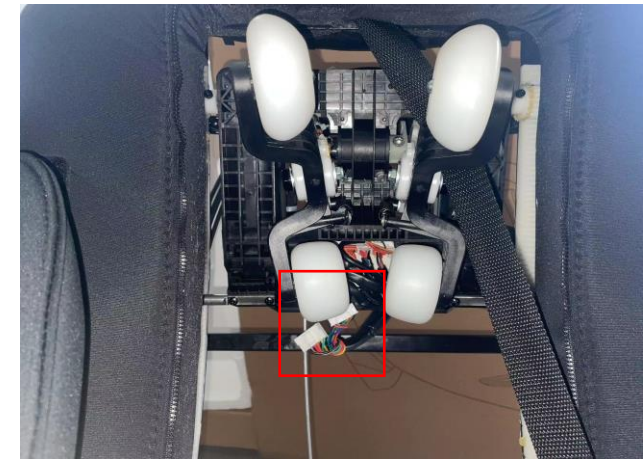
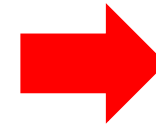
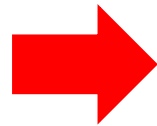
11. Instructions for disassembling the back wire: Note that the cloak pillow should be disassembled first (refer to 3.4)



Remove 4 screws and take off the backrest back cover

Cut off the zip ties

Remove one screw



Use a small zip tie to unzip the fleece fabric

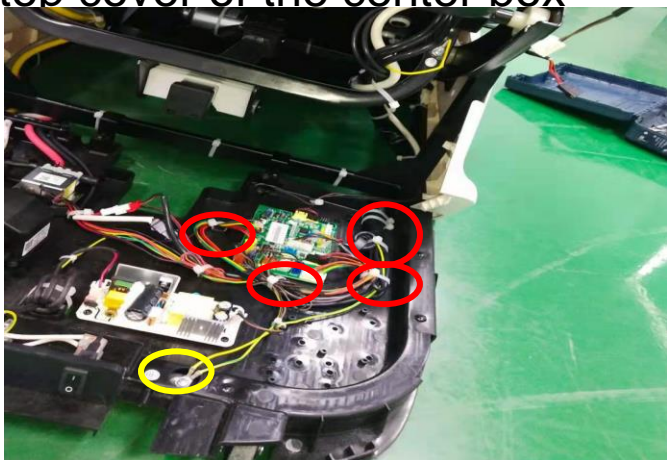
Remove the 3 screws on the upper cover of the movement adapter plate

Remove 2 back wire terminals

11. Instructions for disassembling the back wire: Note that the cloak pillow should be disassembled first (refer to 3.4))



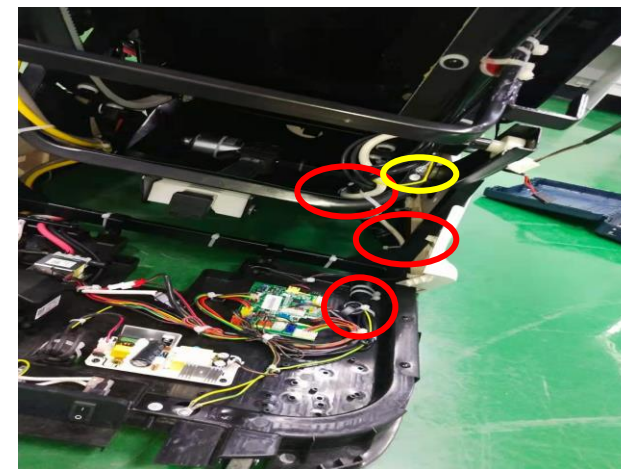
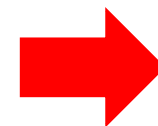
Remove 2 screws and take off the top cover of the center box



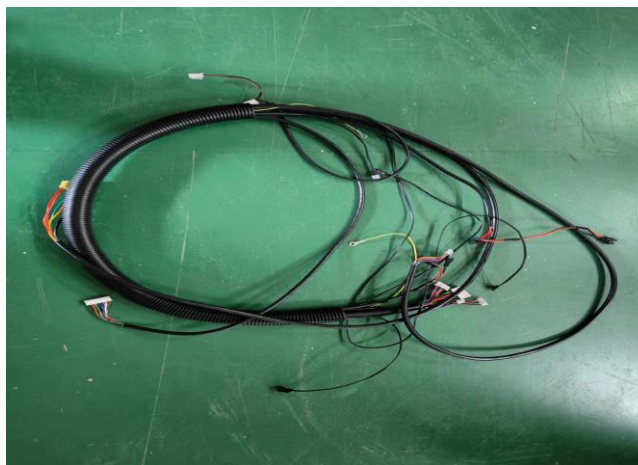
Cut off the red marked buckle, remove the yellow marked ground screw, and unplug the backrest cable



Cut off the backrest wire cable tie



Cut off the red marked buckle and the yellow marked ground screw



remove the backrest cable

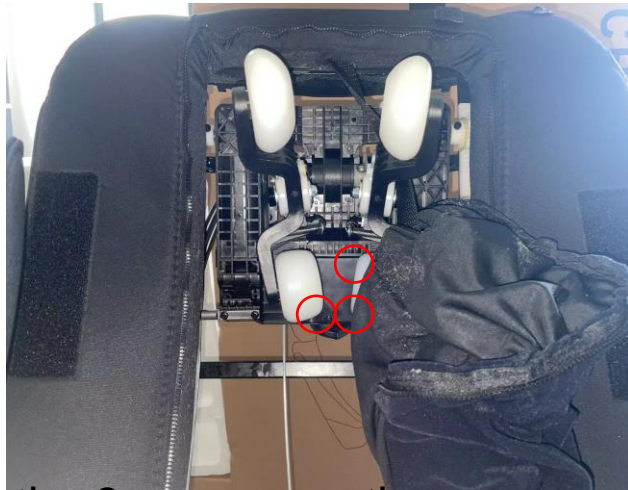
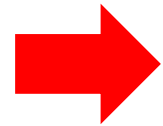
12, 机芯转接板的拆卸: 注意, 先拆卸披风枕头 (参考3.4)



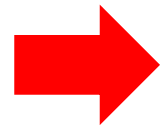
Use a small zip tie to unzip the



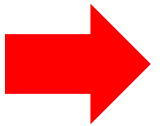
Remove 2 screws



Remove the 3 screws on the upper cover of the movement adapter plate



Remove all terminals from the adapter board of the movement

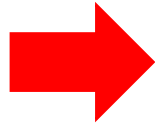


Remove the adapter plate of the movement

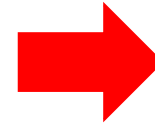
13, 机芯上下行程检测板拆卸说明:



Remove 4 screws and take off the backrest back cover



Remove 2 screws and unplug the terminals

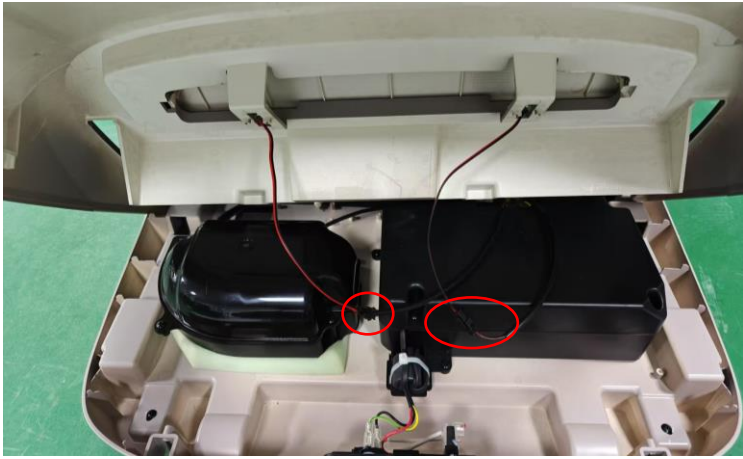


Remove the up and down travel detection board

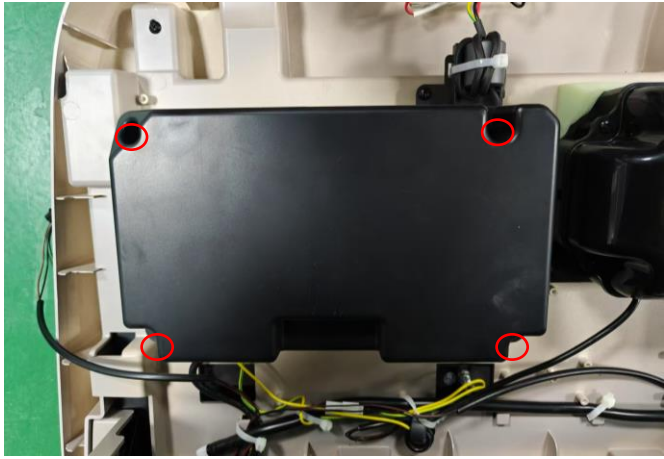
14. Internal disassembly instructions for the center box component:



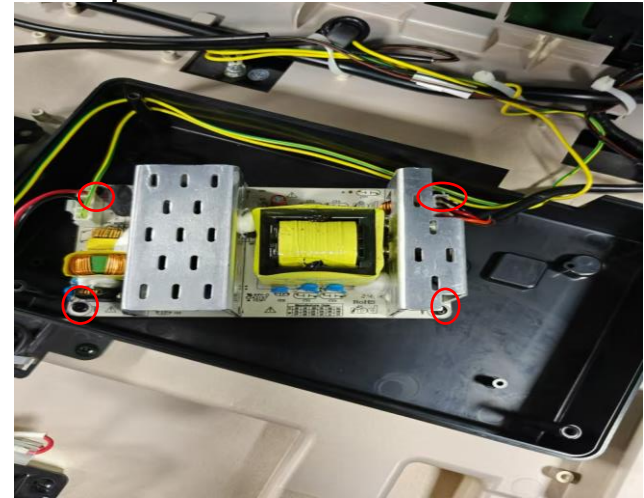
Remove 2 screws and take off the top cover of the center box



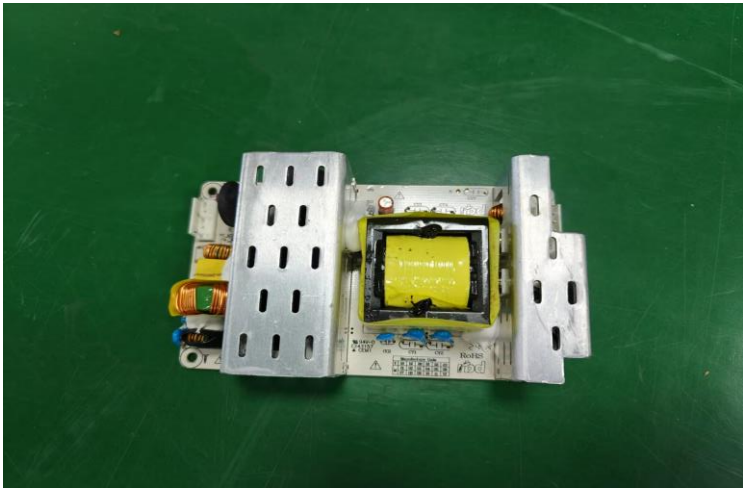
Remove 2 terminals



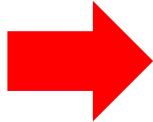
Remove 4 screws and take off the cover



Remove 4 screws and disconnect 2 terminals



Remove the switch power board



Remove 5 screws and take off the cover

14. Internal disassembly instructions for the center box component:



Remove 2 screws, unplug 1 trachea, cut off the zip tie, and unplug 1 terminal

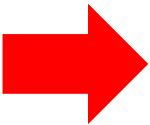


Remove the air pump

15, Disassembly instructions for calf components:



Open the zipper



Open the zipper

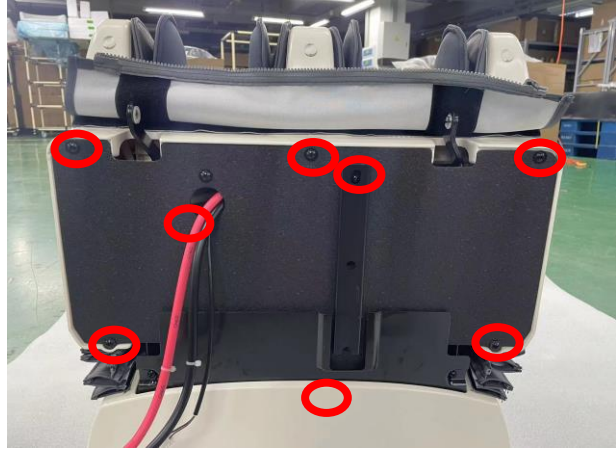


Remove the trachea and terminals

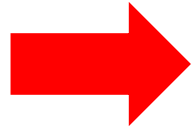


Remove the calf component

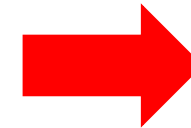
15.1 Instructions for disassembling upper and lower legs:



Remove 8 screws and take off the upper leg shield



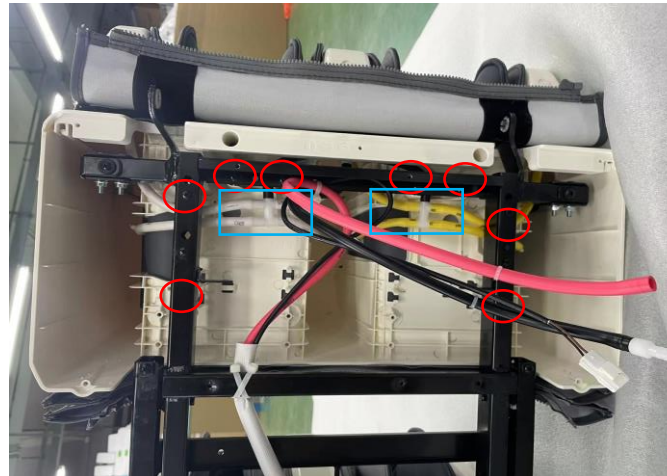
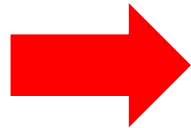
Remove the baffle



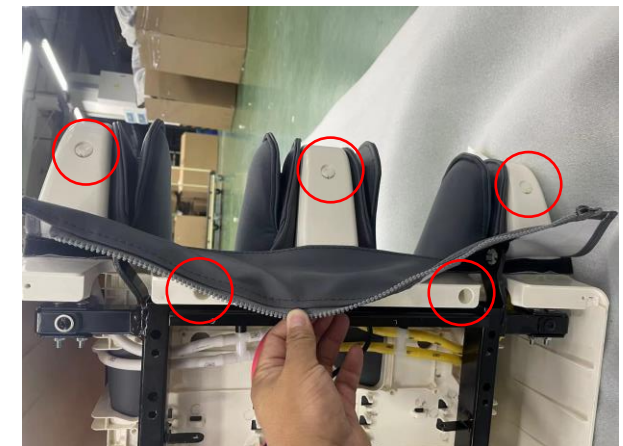
Remove 2 tension springs



unzip the zip of feet



Remove 8 screws and disconnect 8 air tubes on both sides

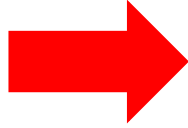


Pick out 3 plugs and remove 5 screws

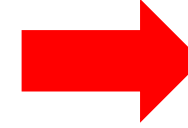
15.1 Instructions for disassembling upper and lower legs:



Remove the upper leg cover



Open the zippers on both sides



Remove a total of 8 screws on the left and right sides

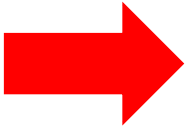


Remove the upper and lower leg components

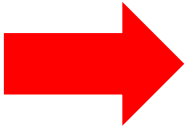
15.2.Internal disassembly instructions for upper leg components: disassembly instructions for upper leg airbags and leather covers



Open the zipper



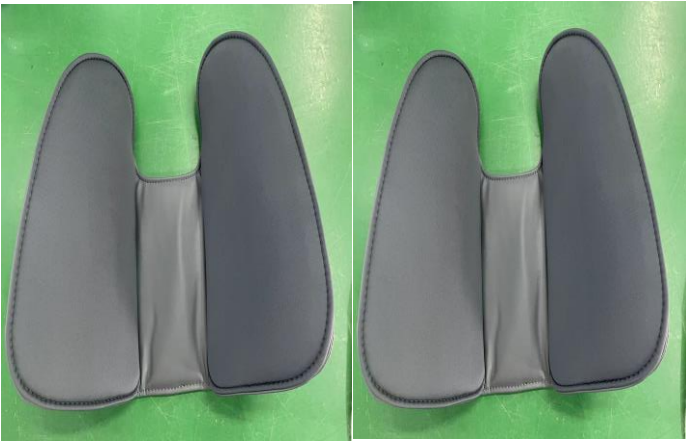
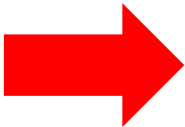
Remove a total of 8 screws on the left and right sides



Remove the airbag

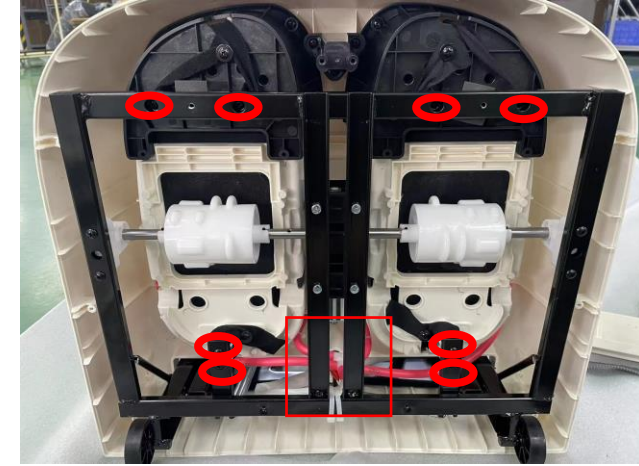
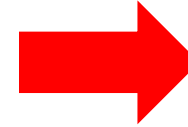
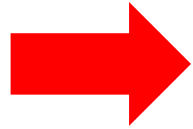
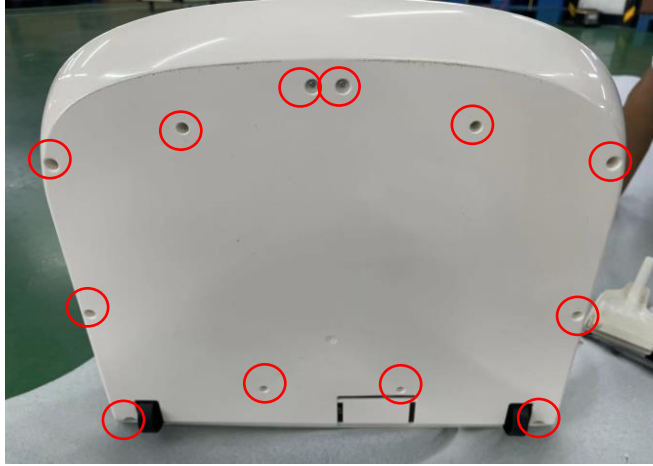


Remove the airbag



Take out the jacket

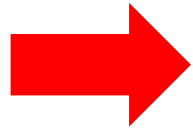
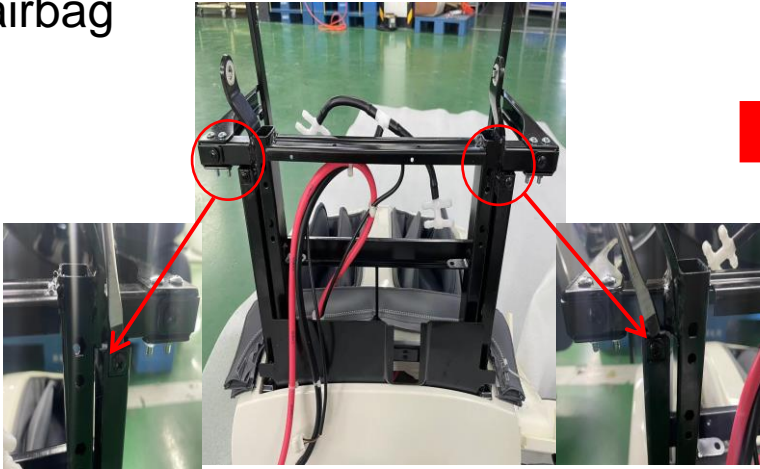
15.3, Instructions for disassembling the lower leg:



Remove the 12 screws and remove the airbag

Remove the calf bottom cover

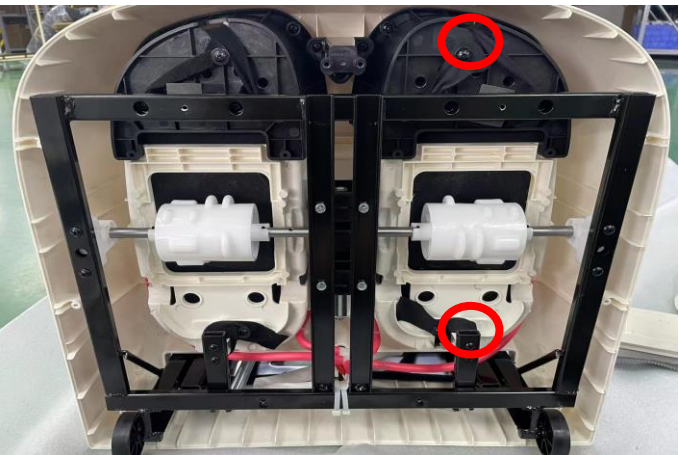
Remove 6 screws and disconnect 4 air tubes



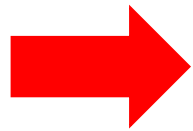
Remove 2 screws, pry open the stopper, cut off the zip tie, and remove the plug and iron

Remove the lower leg component

15.4, Internal disassembly instructions for lower leg component: disassembly instructions for lower leg airbag and leather cover (demonstrating the same disassembly for left and right legs)



Remove 2 screws



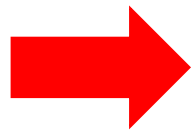
Open the zipper



Take out the calf jacket

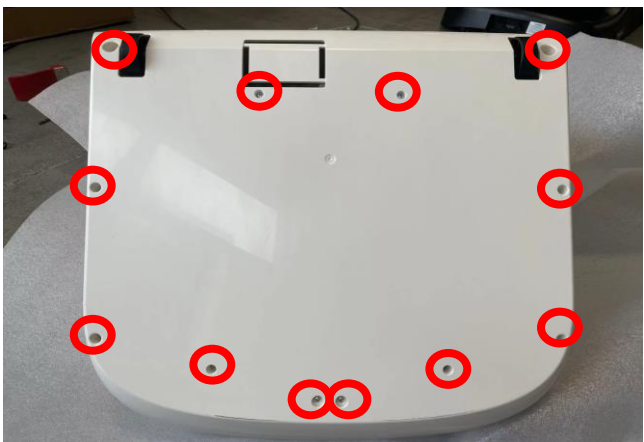


Remove 4 screws

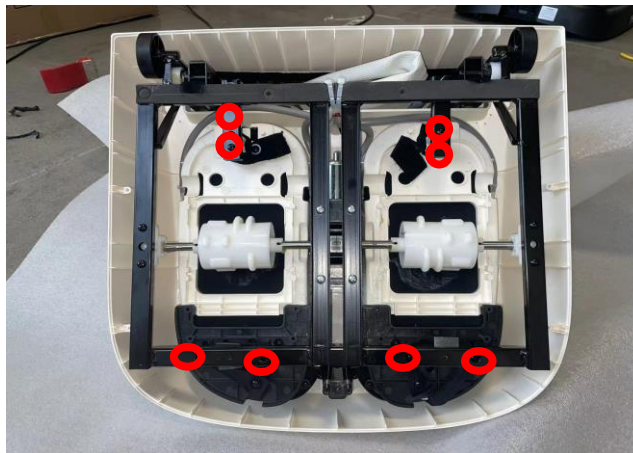
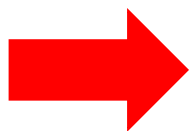


Remove the calf airbag

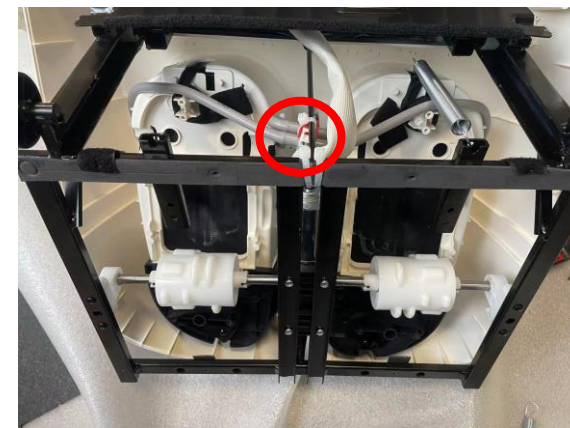
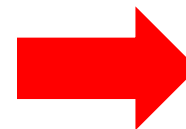
15.6, Internal disassembly instructions for lower leg component: disassembly instructions for lower leg airbag and leather cover (demonstrating the same disassembly for left and right legs)



Remove 12 screws



Remove 16 screws



Cut off the buckle and
unplug one terminal

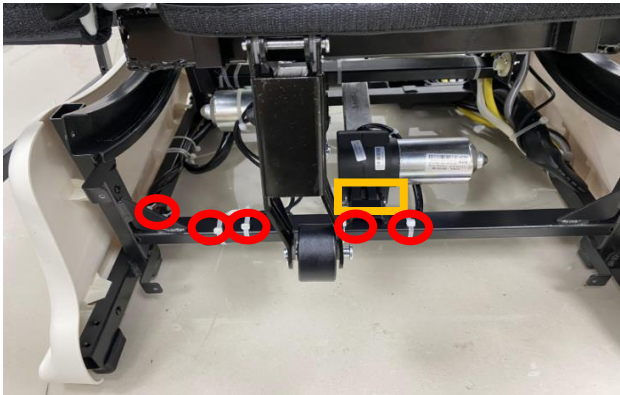


Remove the calf and roll the foot

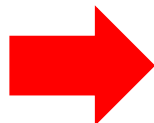
16, Instructions for disassembling the backrest push rod: To remove the flat push rod, one person needs to lift the backrest from behind to prevent injury! Refer to (15 calf component disassembly instructions) to remove the calf component



Remove 4 screws and take off the front windshield cloth



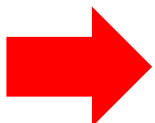
Remove the yellow marked pins and shafts, and cut off the red marked buckles



Unplug two terminals



Remove 2 hex screws and remove the backrest push rod



Remove the flat push rod

五、按摩椅故障代表

五、按摩椅故障代表

五、按摩椅故障代表