

EC-8507B massage chair service guide



Table of Contents

- 一、 Product introduction
- 二、 Massage chair tools and use
- 三、 Circuit working principle
- 四、 Massage chair removal instructions
- 五、 Massage chair fault judgment

一、 Product introduction

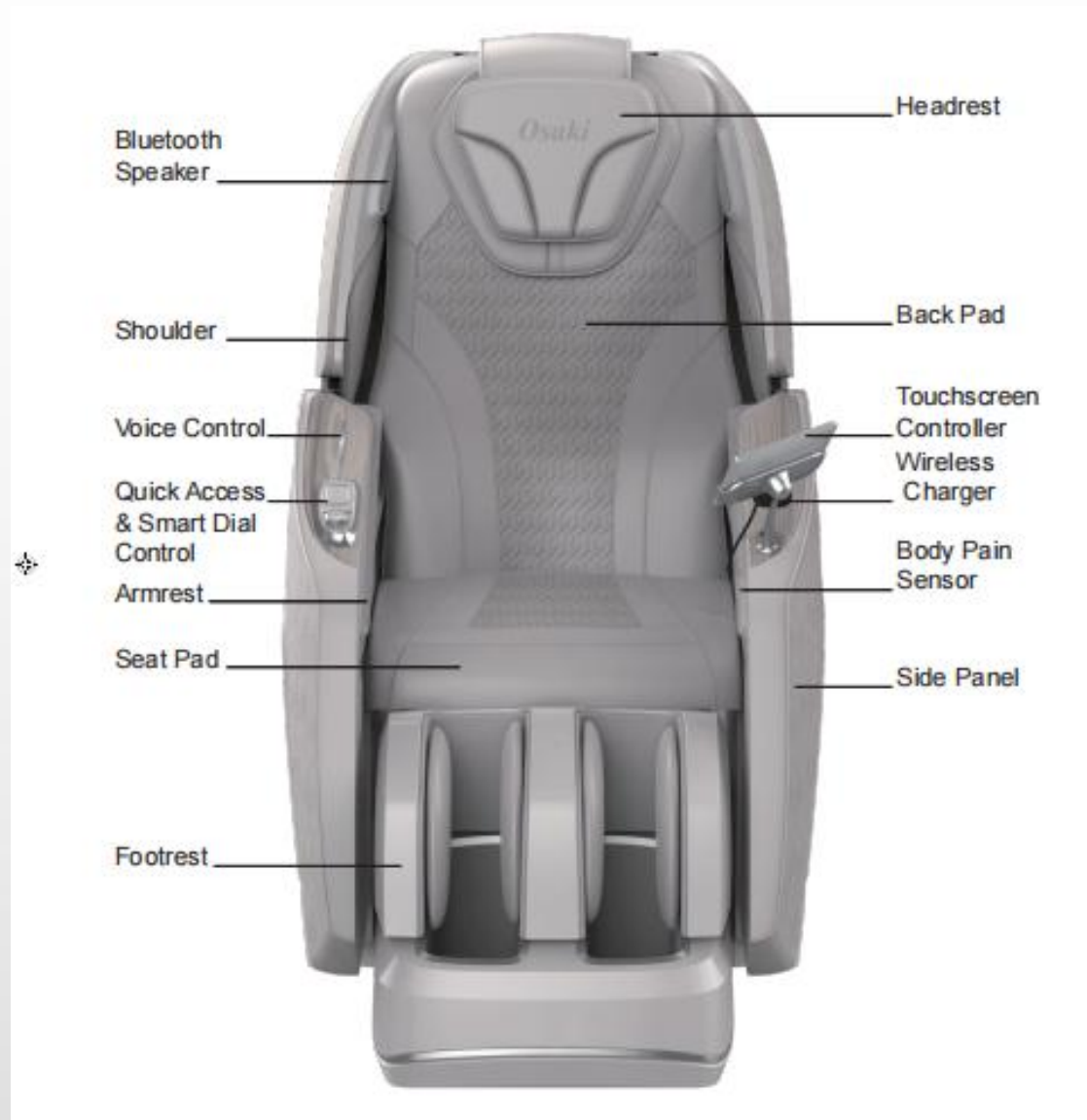
1、 Product appearance:



2、specifications of the products:

Product Name		4D Manhattan Duo
Rated Voltage		110-120V 60Hz
Current		1.7A
Working time		15min
Guide		L Shape 52.4"
Upper 4D Massage Rollers	Forward arc distance	Approx. 2.64"
	Strength	5 levels
	Speed	5 levels
Lower 3D Massage Rollers	Forward arc distance	Approx. 3.35"
	Strength	5 levels
	Speed	5 levels
Airbags	Intensity	5 levels
Angle Adjustment	Backrest	Approx 128°- 155° (Ground Angle)
	Footrest	Approx 7°-65° (Wall Angle)
Size	Upright	63.0" x 31.5" x 47.6"
	Reclined	76.8" x 31.5" x 40.9"
Extension of Footrest		Approx 7.1"
Dimensions of Packing (L*W*H)		57.9" x 33.5" x 50.8"
N.W.		273.2 lbs
G.W.		329.6 lbs
Weight of Chair		Approx 273.2 lbs
Usage Condition		Environment temperature : °32°F - 95°F Contrasting humidity : °20-80RH°
Storage Condition		Storage temperature : °23°F - 95°F Storage humidity : °20-80RH°
Maximum Weight of User		260 lbs

3、Appearance of the whole machine:

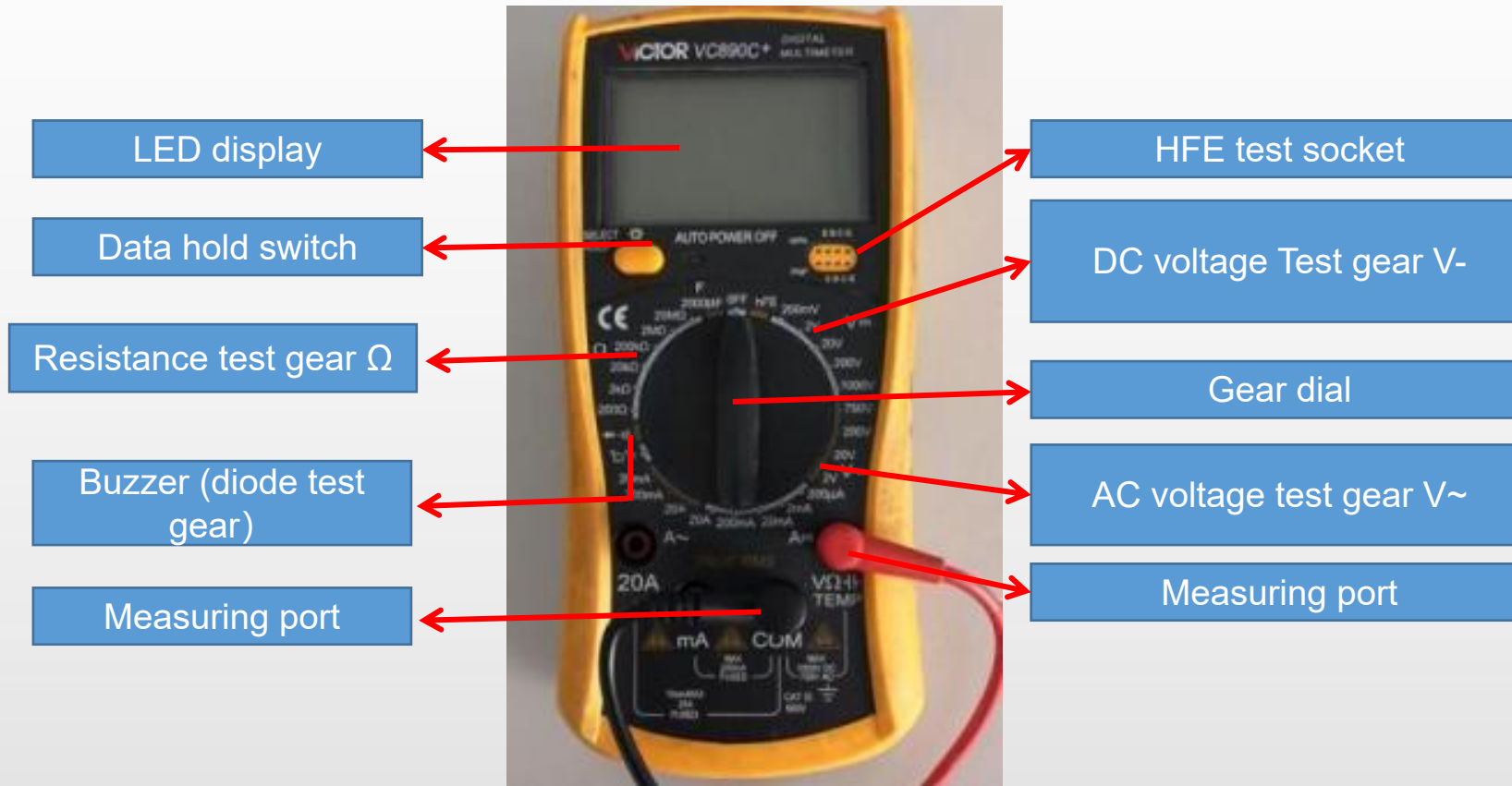


二、 Massage chair tools and use

1.tools

					
Screwdriver size 1,2,3	Diagonal cutter and long nose pliers	Soldering Kit	Spanner tools Kit	Test pen	Allen Key set
					
Ratchet Tools Set	24V/DC power	Electric Driver	electrical adhesive tape	Cable Ties	WIRE ONECTORS

2.Usage of multimeter



2.1、 Function of the test gears

Data hold switch: Memorize the measured data for comparison。

Buzzer (diode test gear) : Measure the quality of diode, the on-off and alarm function of circuit

Resistance gear test gear: Measure the quality and value of resistance

DC voltage Test gear V-: Measure DC voltage

AC voltage test gear V~: Measure AC voltage

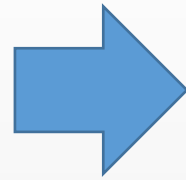
VΩ / COM: VΩ Red pen port (+ pole) during test, black pen port (- pole) during com test

Note: when carrying out resistance or voltage test, it is necessary to select a suitable range. If the range is too small to be measured, and the range is too large, the test error range is large; if the voltage is not known, it is necessary to select a range measurement with a large windlass.

2.2、 On / off measurement of lines



open circuit



As shown in the left picture, first set the multimeter to the buzzer and power it
When the switch is on, the multimeter will display "0."; then contact the two probes with the ends of the red wire
At this time, the multimeter still shows "1." there is no change, which means there is an open circuit in the middle of the wire, that is, the line is open.



close circuit



As shown in the picture on the left, if the multimeter shows the number of ". 002" or ". 00n" and gives an alarm, it means that the wire is connected.

2.3、 Measurement of AC voltage



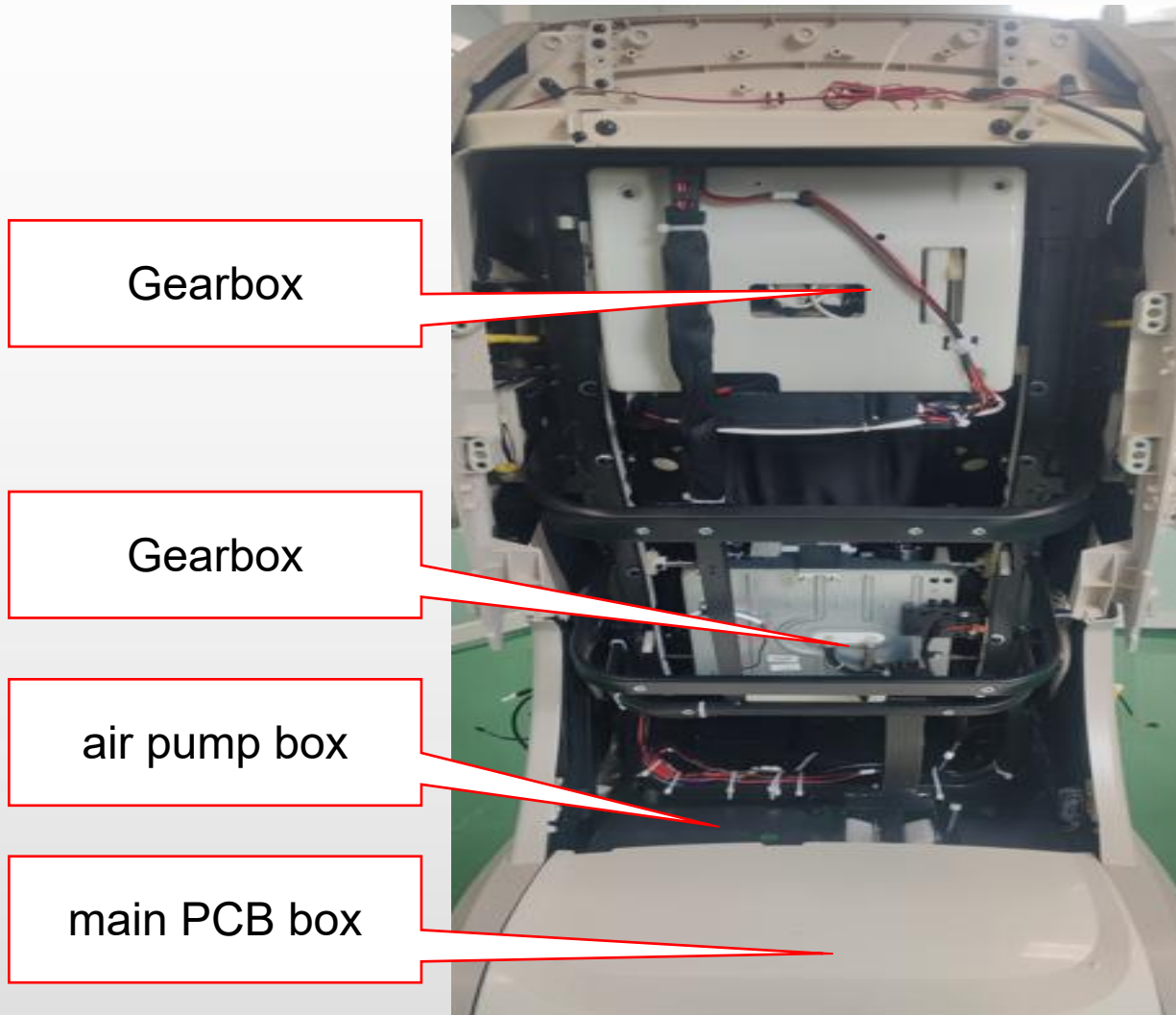
As shown in the picture above: measure the household plug-in board power supply (220V), select the range of 750, and the test result shows "224", indicating that the actual voltage of this group of sockets is 224v at the moment (the switch is pressed down, so there is power, and the light is on).



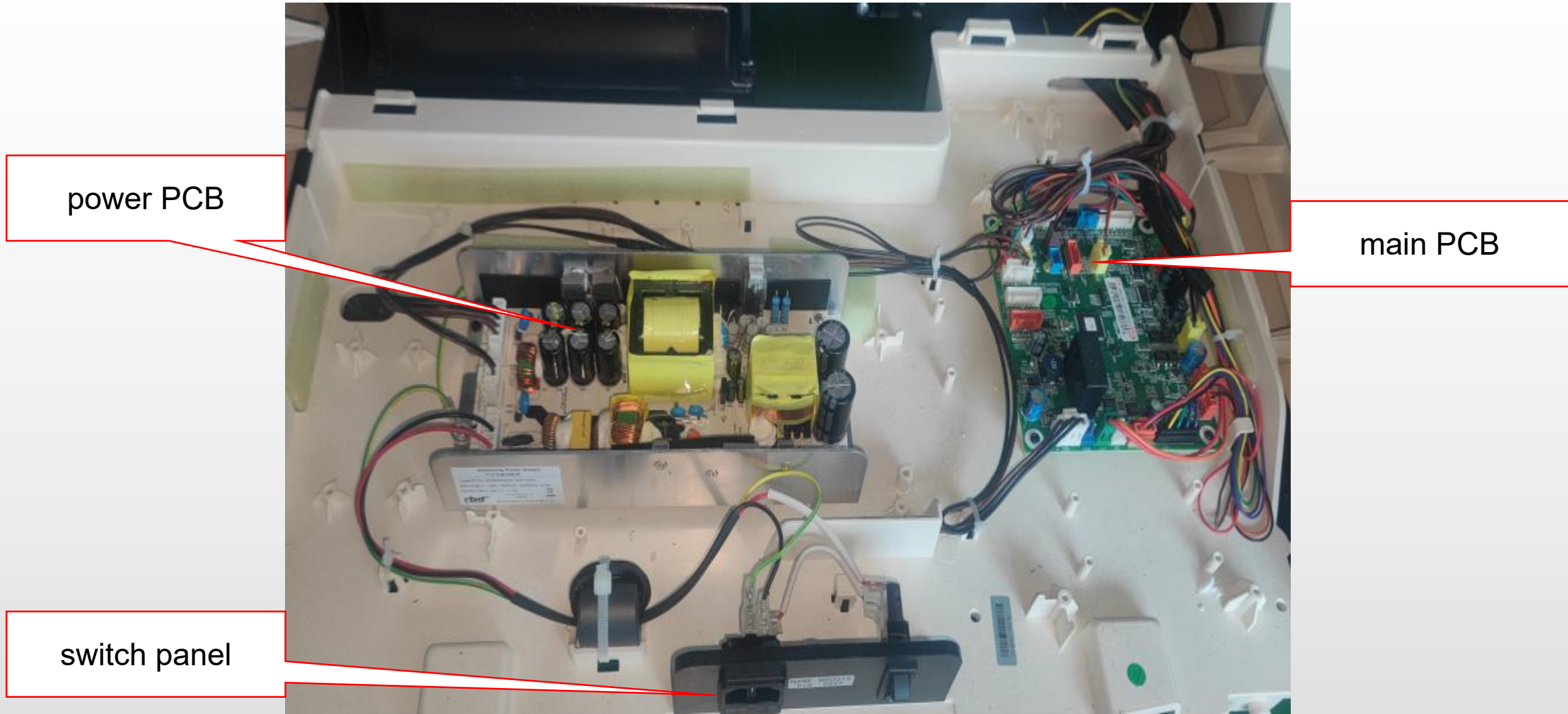
As shown in the above picture: measure the power supply (220V) of our household plug-in board, select the range of 750, and the test result is displayed as "001", indicating that the actual voltage of this group of sockets is 0V at the moment (the switch is not pressed down, so there is no power, and the light is not on).

三、Circuit working principle

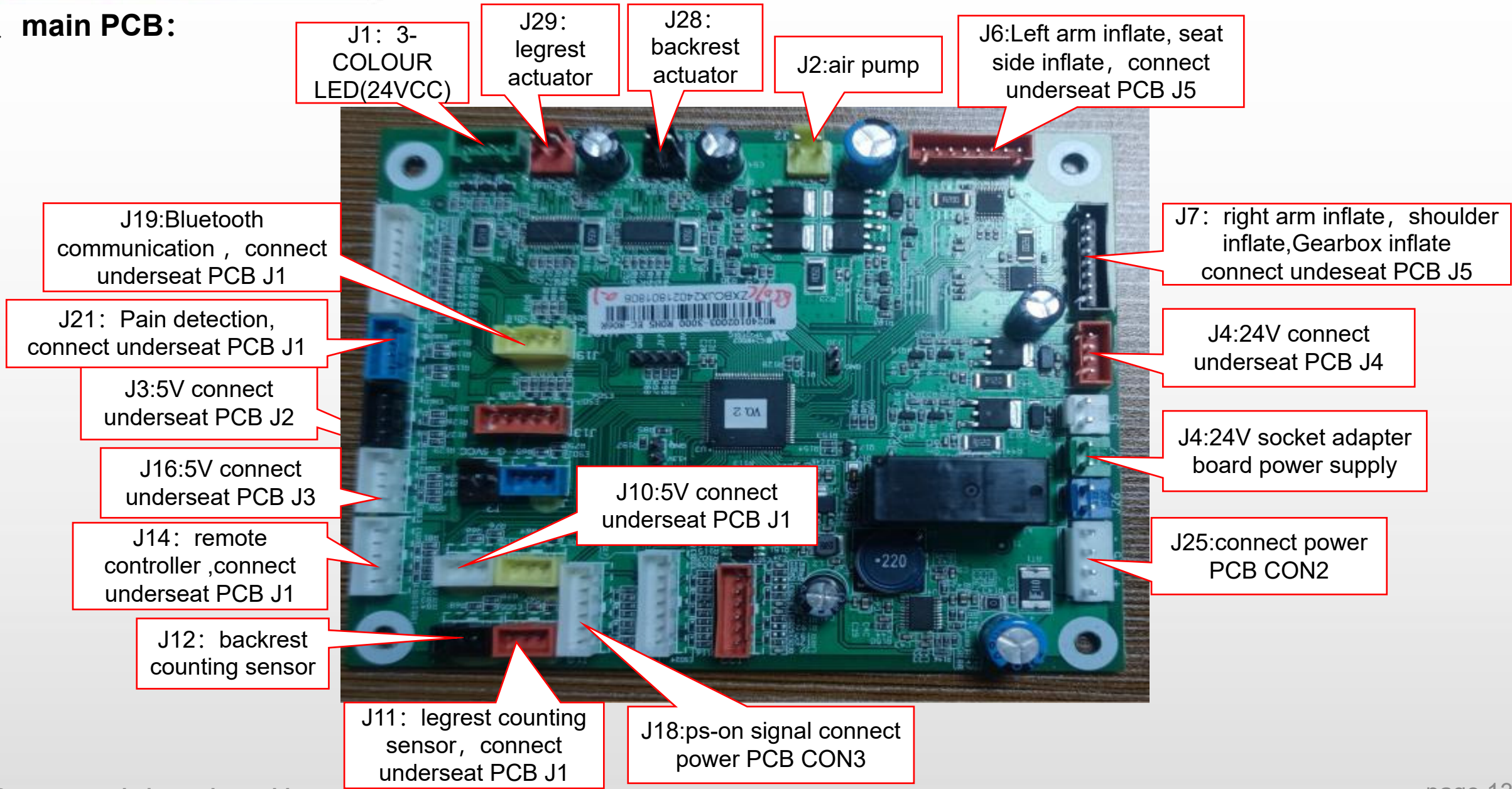
1、Internal structure diagram (overall):



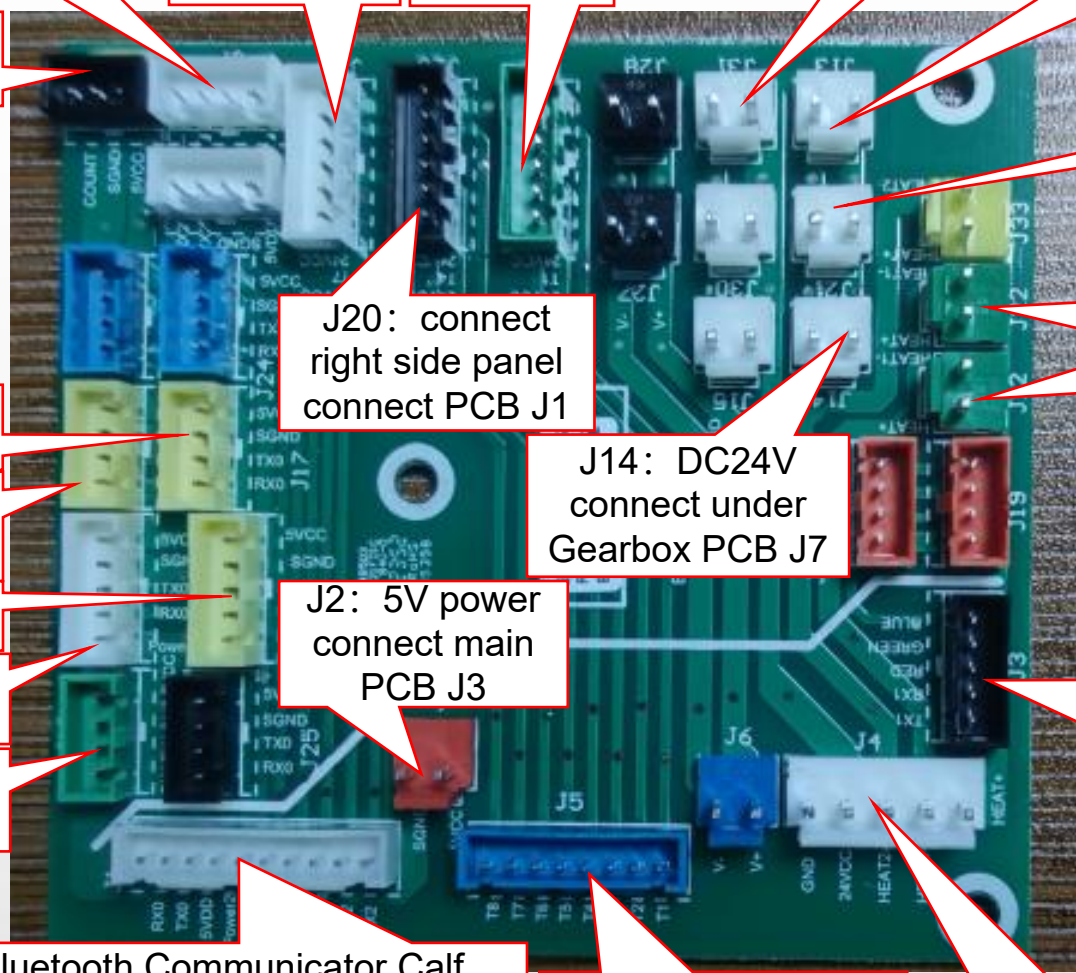
2、 Internal structure diagram (main PCB box):



3、 main PCB:



4、underseat PCB:



J7: Bluetooth communication

J32: Seat frame dual air valve

J16: 24v Left triple air valve

J31: 24v USB charge

J13: DC24V connect upper Gearbox PCB J7

J9: legrest actuator counting sensor

J21: DC24V output connect legrest PCB J8

J17: legrest communication connect legrest PCB J2

J22: heat

J26: upper Gearbox communication connect 3D PCB J4

J12: heat

J14: remote controller

J14: DC24V connect under Gearbox PCB J7

J8: Side panel controller connected to right side panel connect PCB J1

J2: 5V power connect main PCB J3

J3: under Gearbox communication, communication connect main PCB J16, J1

J10: under Gearbox communication connect PCB J2

J1: Bluetooth Communicator, Calf counting port, Sore Communication, pad control POWER1, side panel POWER2, leg/Gearbox/pad control communicate (communication connect main PCB J9, J11, J21, J14, J10, J14)

J5: side seat, arm, shoulder, inflated, Gearbox inflate (connect main PCB J6, J7)

J4: 24V input to heat additive, connect main PCB J4, J27

5、 power PCB:



6、 upper Gearbox PCB:



J7: 24V,connect
underseat PCB J13

J6-1:telescopic motor

J6-2:tapping motor

J6-3:kneading motor

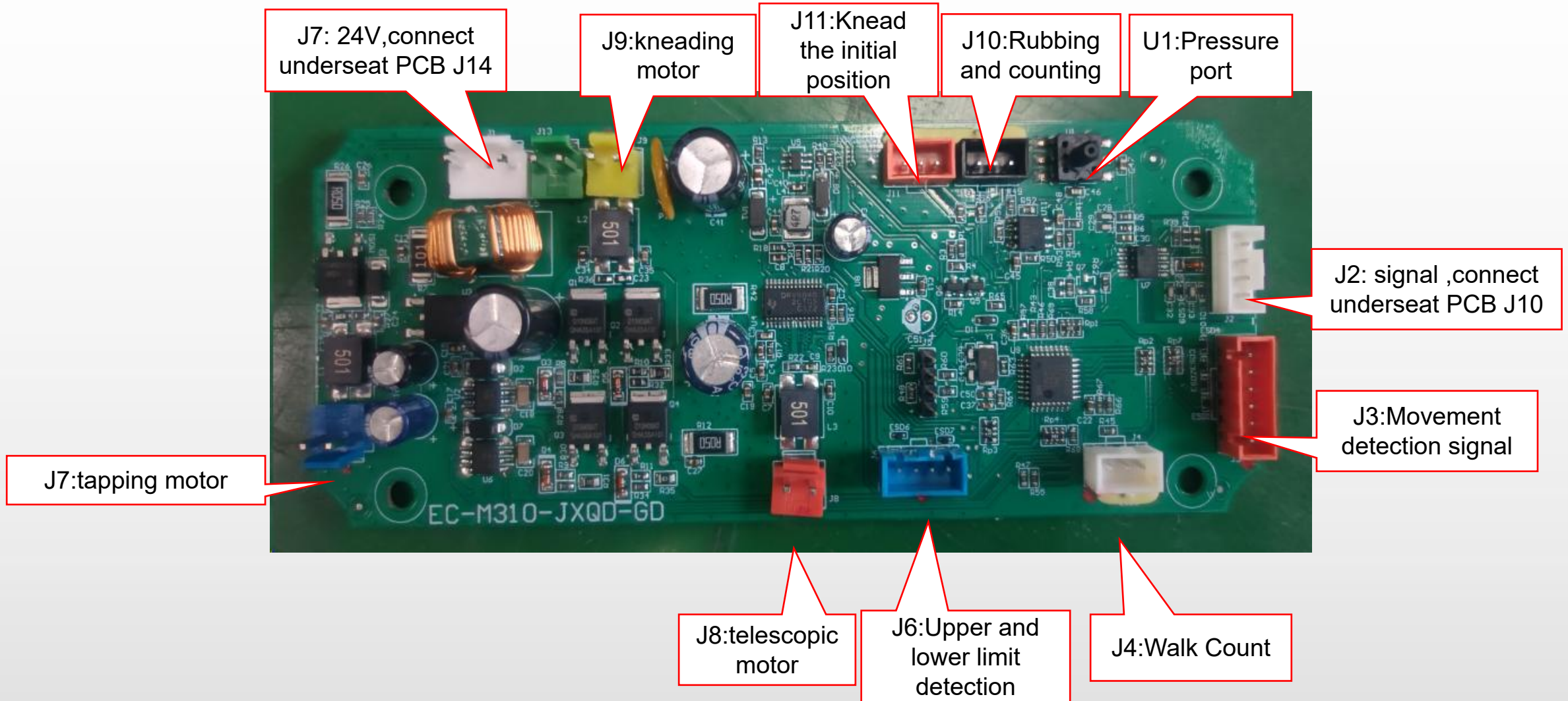
J5: telescopic motor

J4: signal ,connect
underseat PCB J26

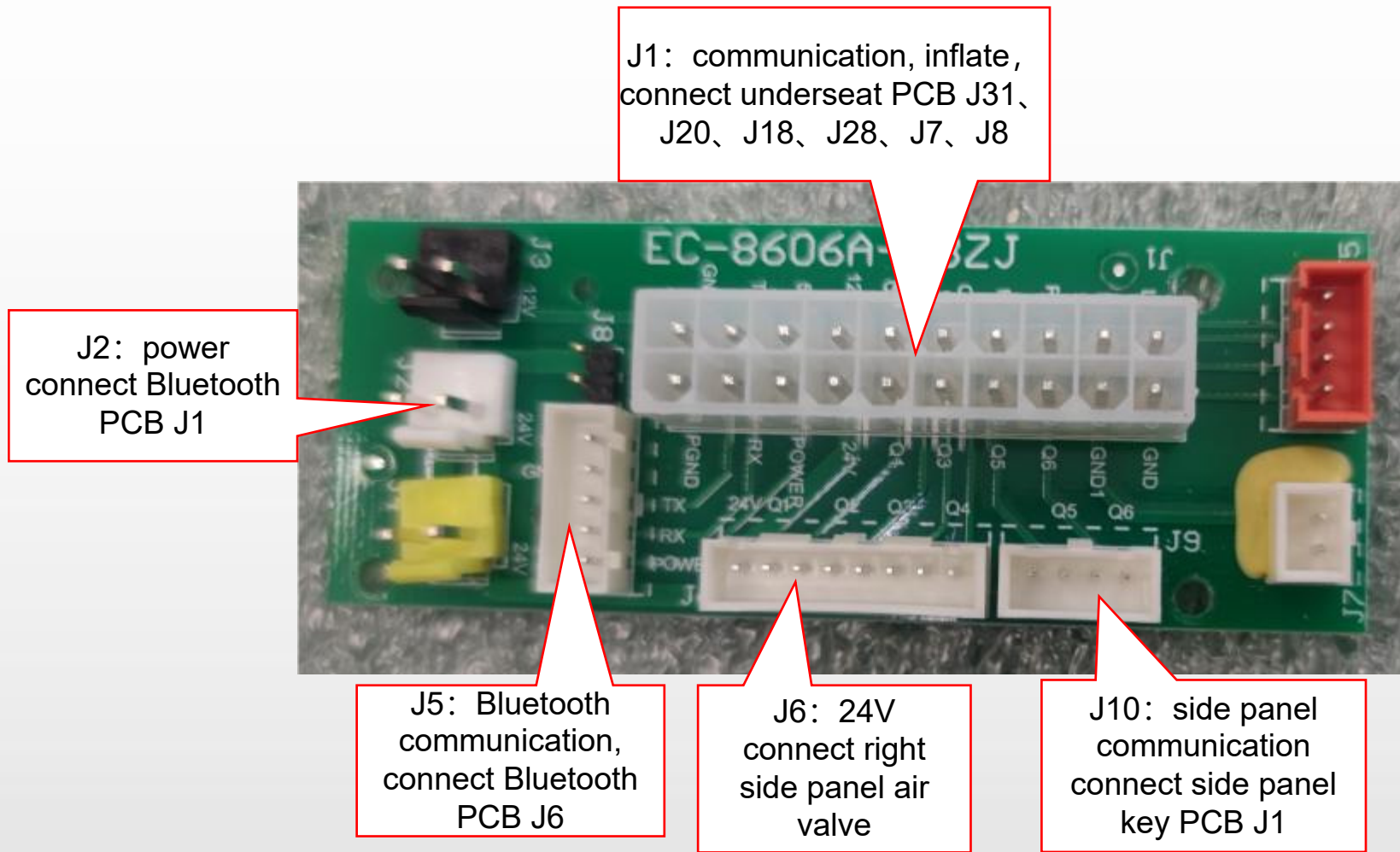
J2:Movement
detection signal

J3:Movement
detection signal

7、 under Gearbox PCB:



8、 right side panel connect PCB:



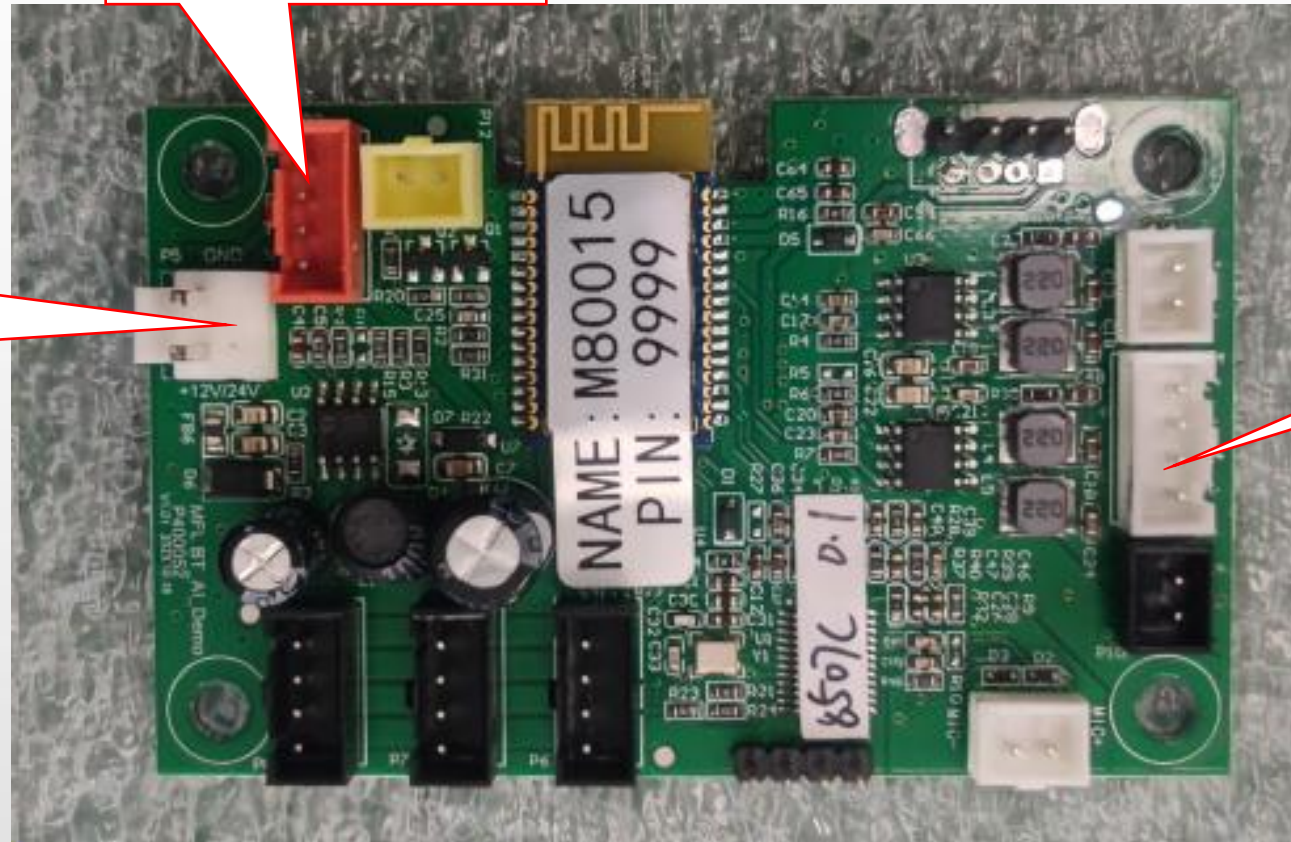
9、Charging PCB :



10、 Bluetooth PCB :

J6: Bluetooth communication,
connect right side panel
connect PCB J5

J1: connect
right side panel
connect PCB J2
24V



J16: hron communication
connect horn

11、legrest PCB:

J8: 24V connect
underseat PCB J21

J10: Lower leg inflation port connected to air pressure
detection PCB J6

J7: Foot roll detection

J9: connect Leg
extension detection
PCB and touchdown
wheel

J4: upper legrest extension connect
upper legrest pinch motor

J2: communication,
connect underseat
PCB J17

J1: connect foot massage 24V

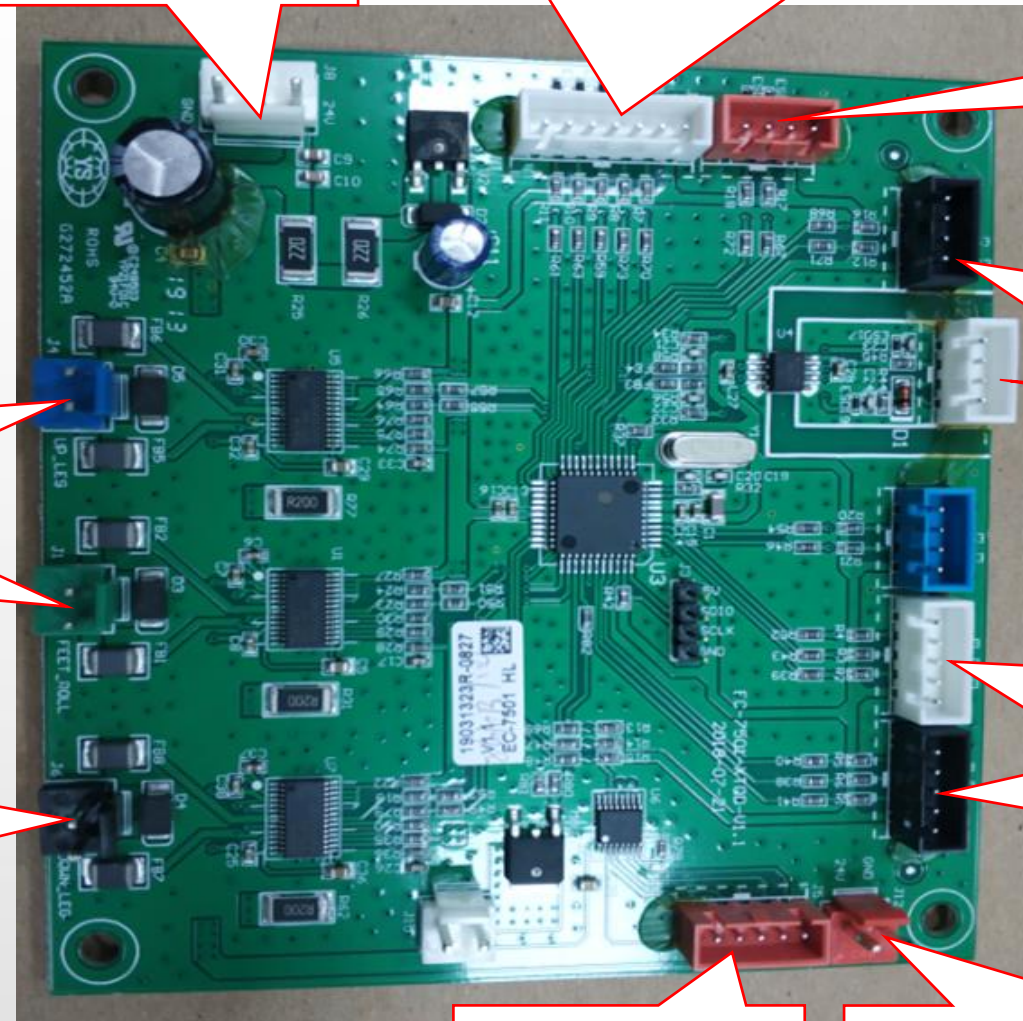
J13: Upper leg
extension detection
Connect anti pinch PCB
J1

J6: connect lower legrest extension
motor

J14: connect lower leg
extension detection

J5: Connect the
lower leg to inflate

J12: DC24 V power output connect
to air pressure detection PCB J4



四、Massage chair removal instructions

1、disassembly of the pillow:



A.unzip the zipper



BIG pillow



B.unzip the zipper

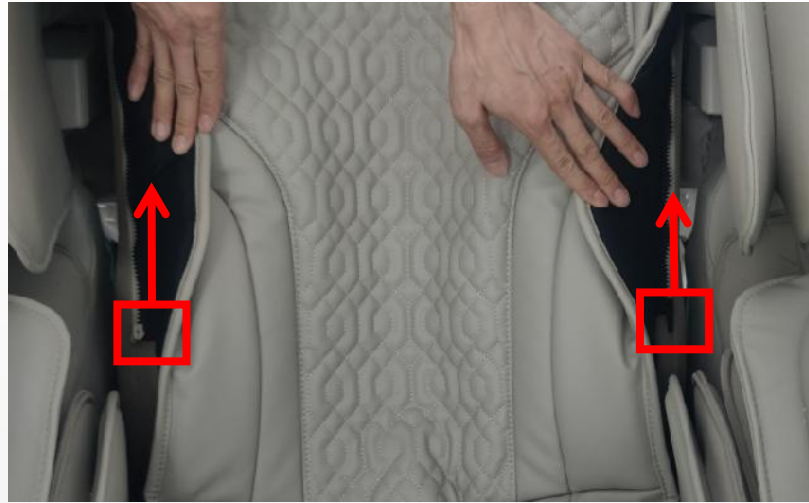


small pillow

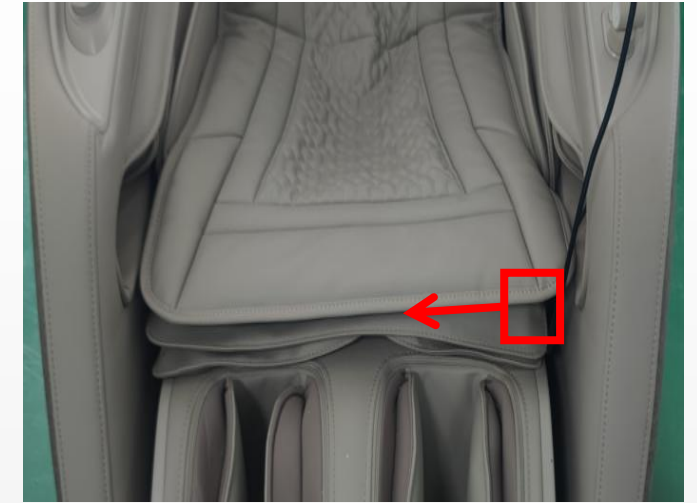
2、 disassembly of backrest pad:



A..unzip the zipper



B.unzip the zipper



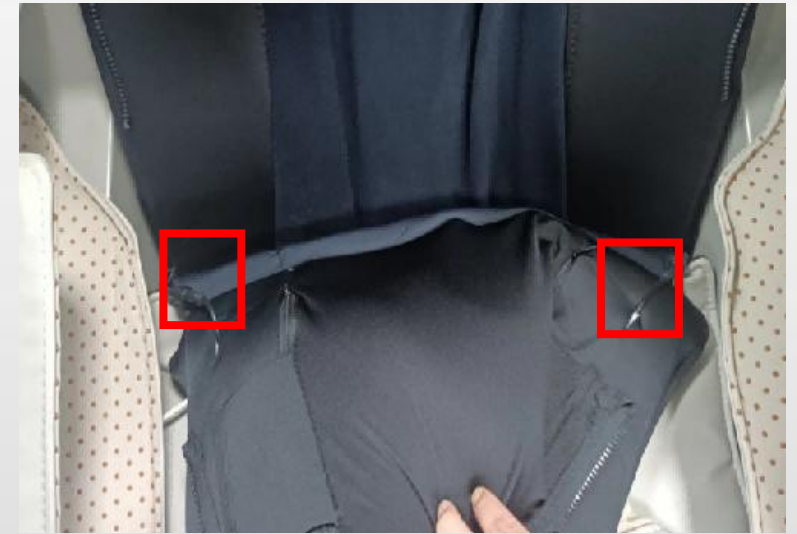
C.unzip the zipper



D.unzip the zipper



E.unzip the zipper



F.Disconnect the connecting wire



backrest pad

3、 disassembly of right side panel:



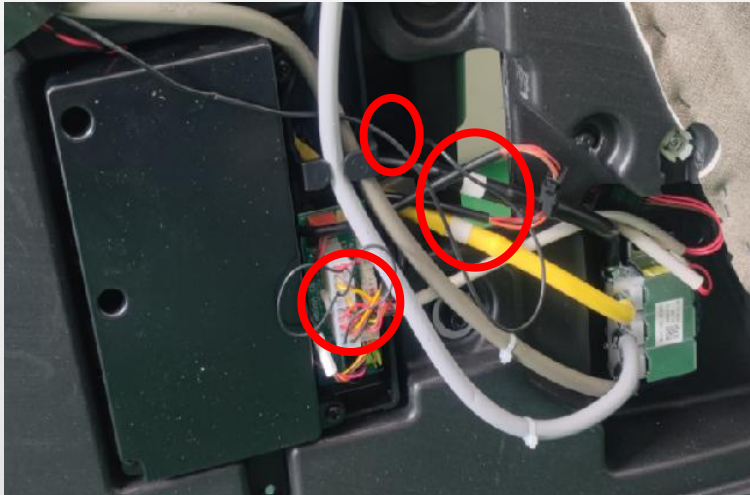
A.open the cover



B.side panel cover



C.hood cover



D.disconnect the terminal and air hose, remove 1 screws

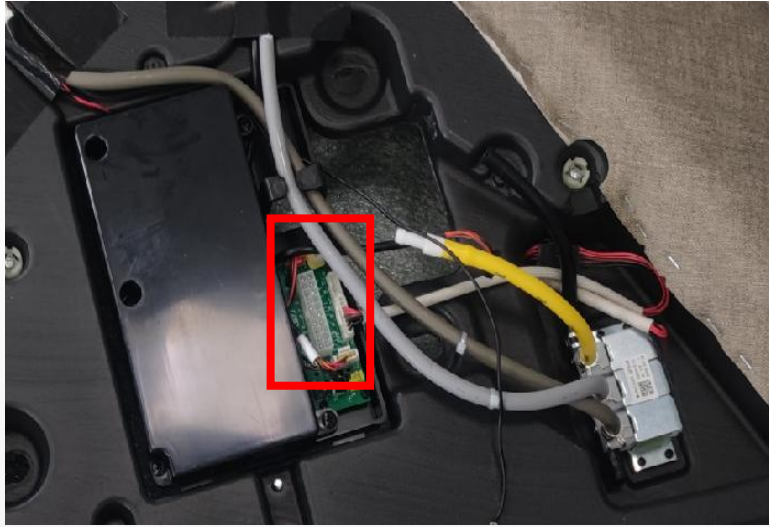


E.remove 6 screws

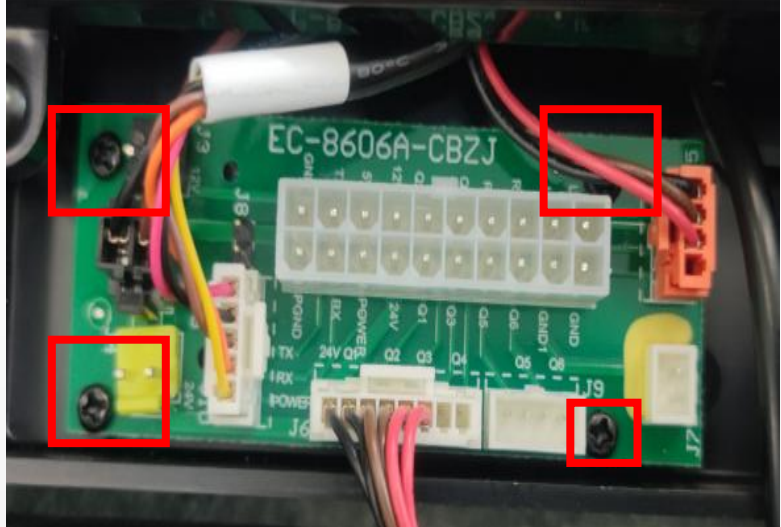


F.right side panel

4、 disassembly of inner right side panel:



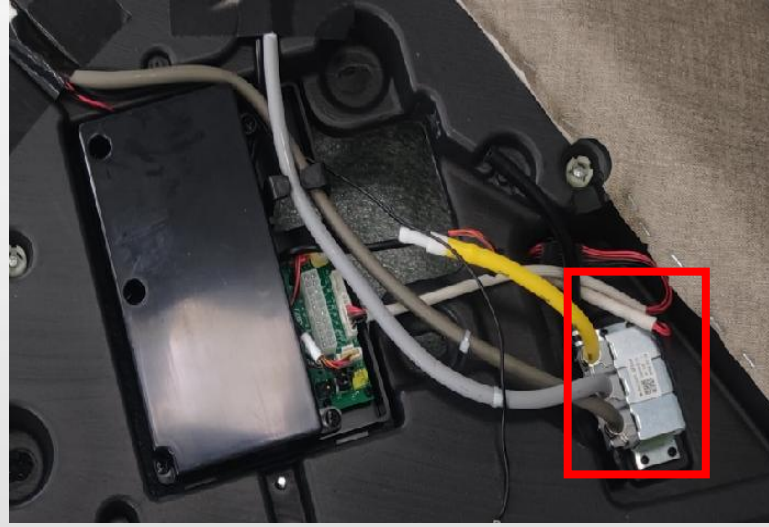
A. disconnect the terminal



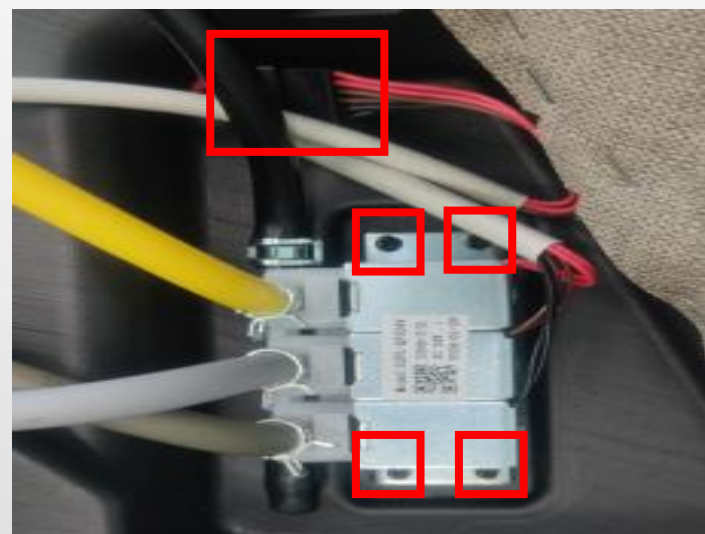
B.remove 4 screws



C.side panel switch PCB



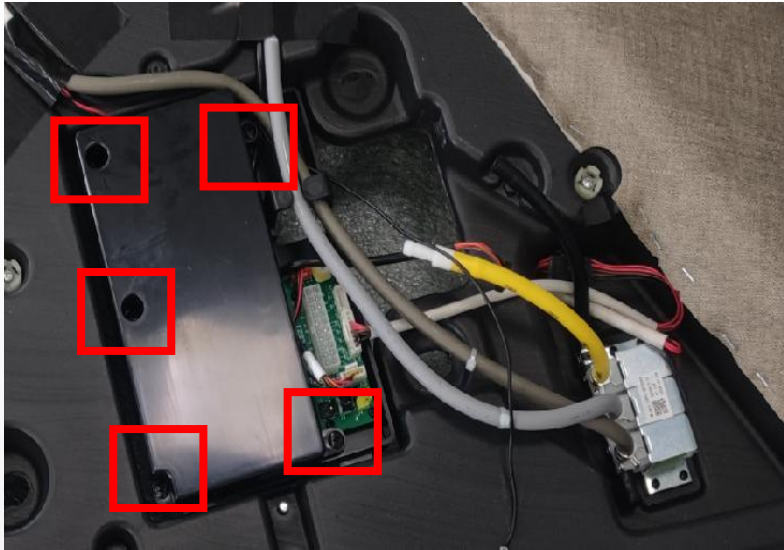
D. air valve



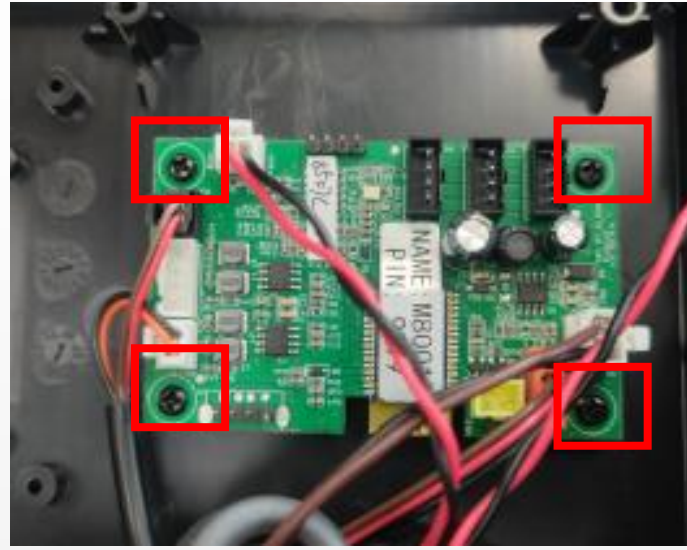
E. disconnect the terminal and remove 4 screws



air valve



F. remove 5 screws



G. disconnect the terminals, remove 4 screws



H. Bluetooth PCB



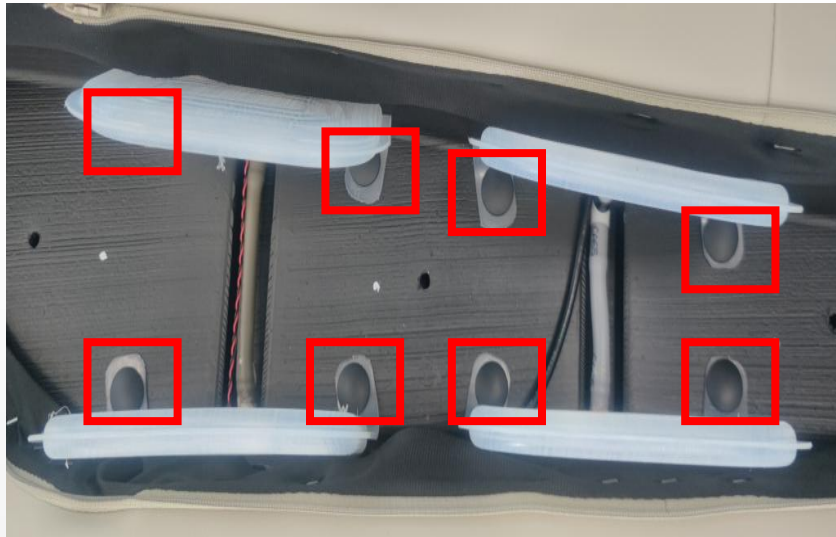
I. unzip the zipper



J. remove the arm cover



arm cover



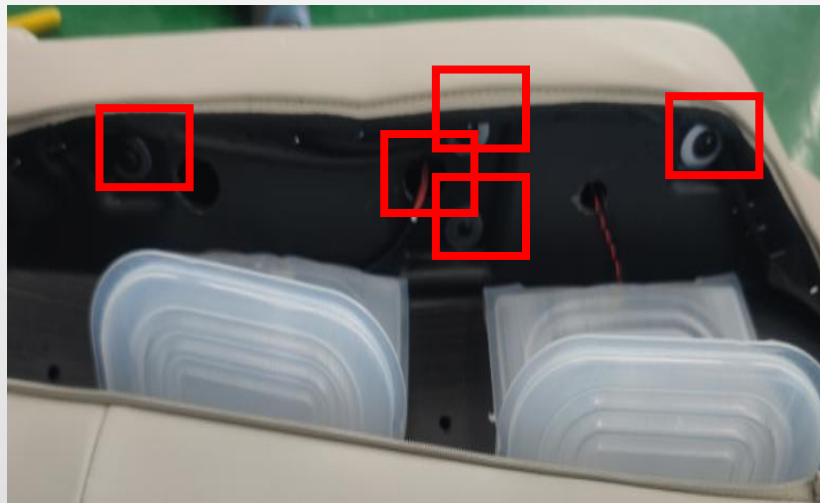
K. break open the cloth cover pin,
disconnect the air hose



air bag



L. disconnect the terminals



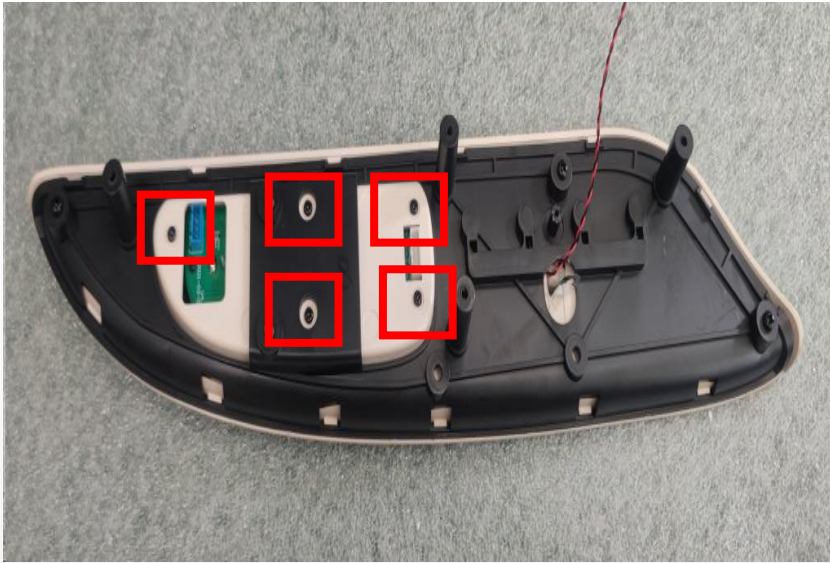
M. disconnect the terminals,remove 5 screws



N. remove 1 screws



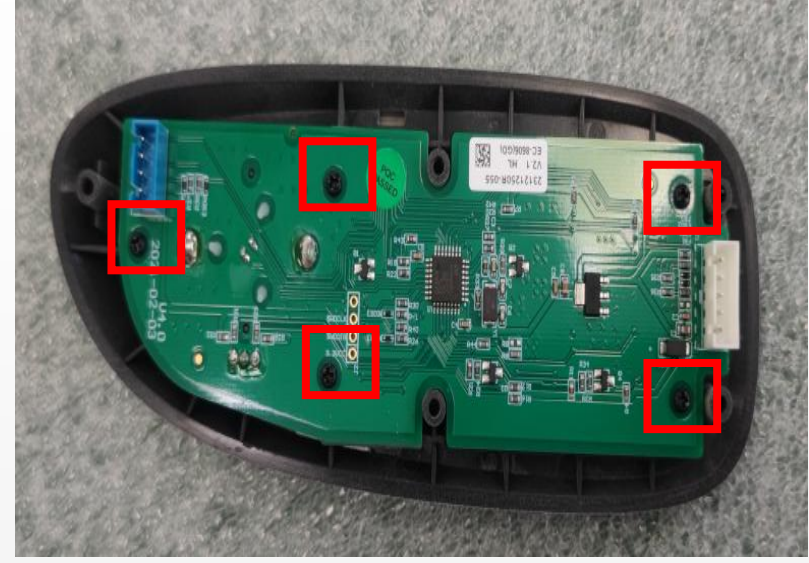
upper cover component of right armrest



O. remove 5 screws



side panel controller component



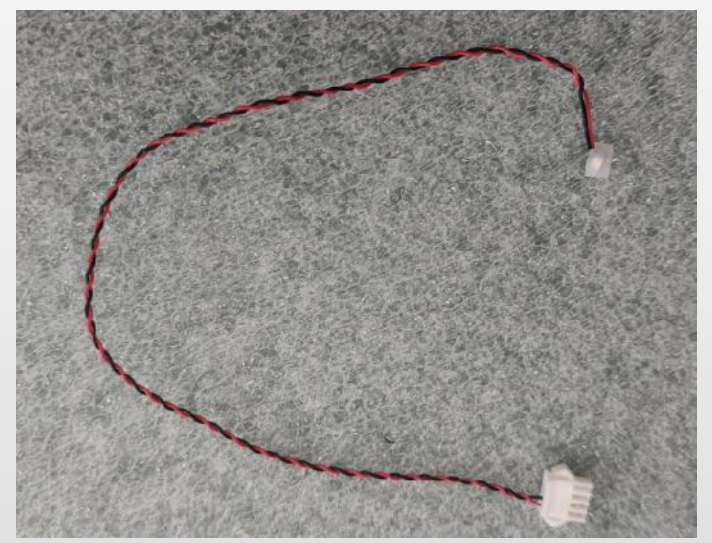
P. remove 5 screws



Q . remove 3 screws



R .tear off the film



microphone

5、 disassembly of left side panel:



A .open the cover



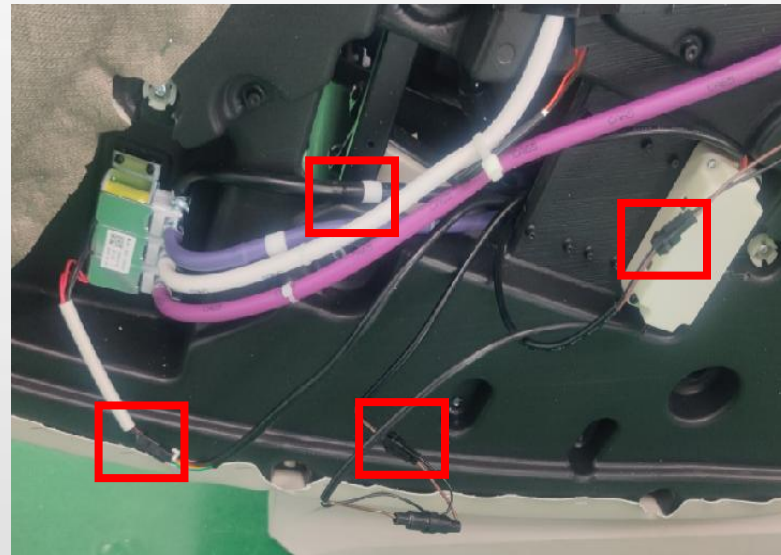
B .left side panel



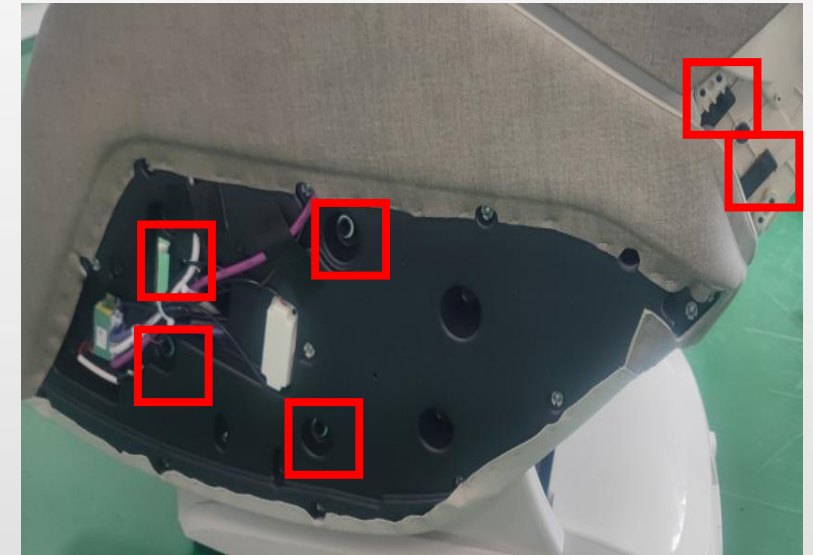
C .hood cover



D .cut the cable tie



E.disconnect the air hose and termis



E .remove 6 screws

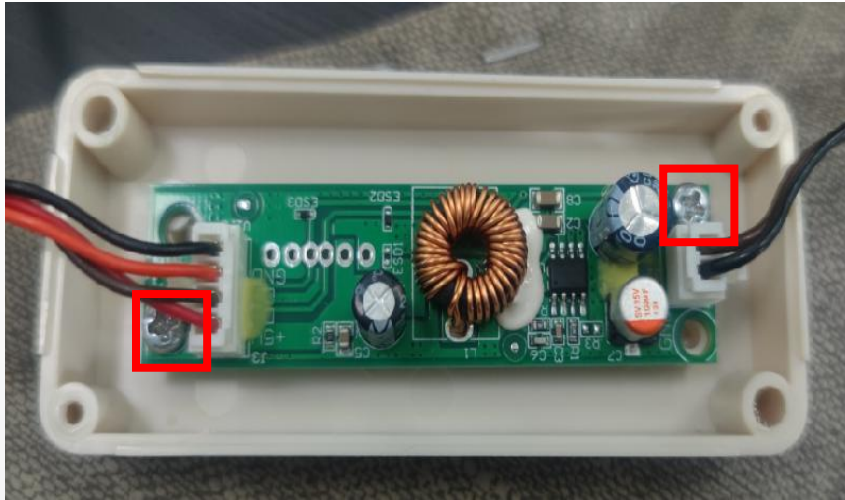


left side panel

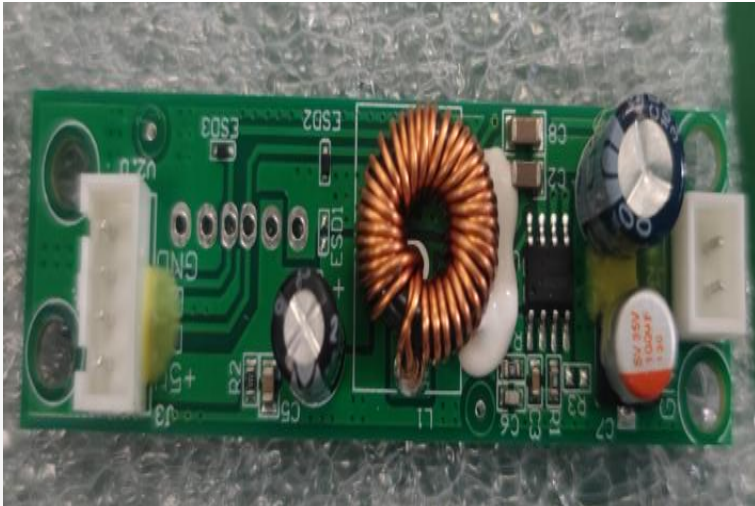
6、 disassembly of inner left side panel:



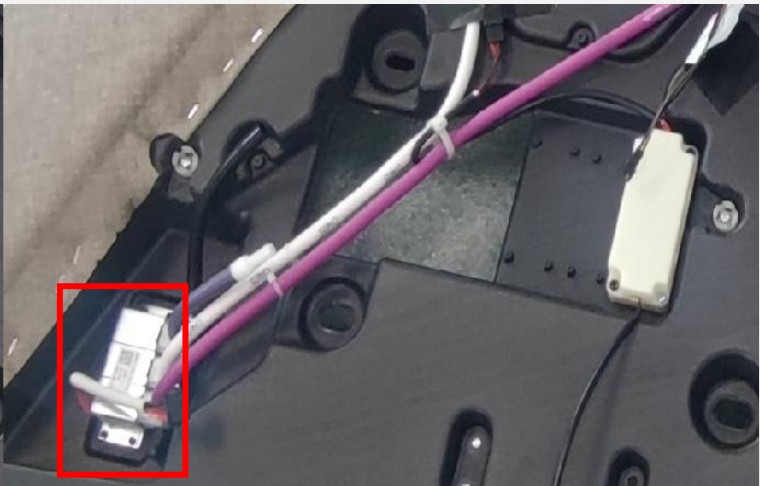
A. remove 4 screws



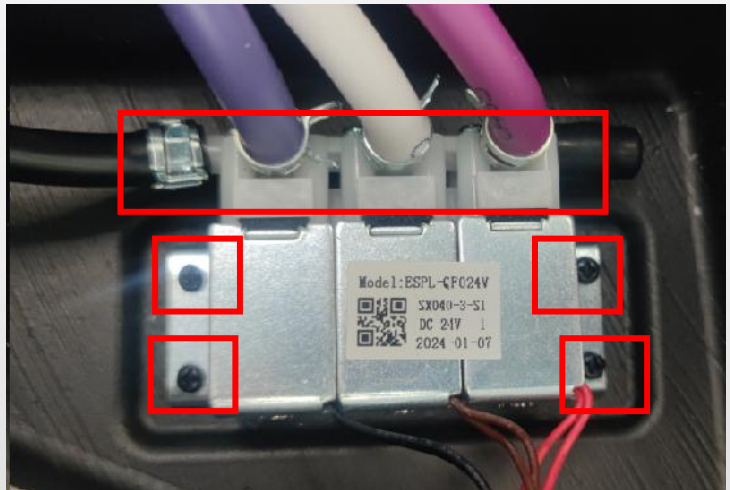
B .remove 4 screws, disconnect terminals



USB PCB



C. air valve



D. disconnect the terminal and air hose, remove 4 screws



air valve



E.unzip the zipper



F.remove the arm cover



arm cover



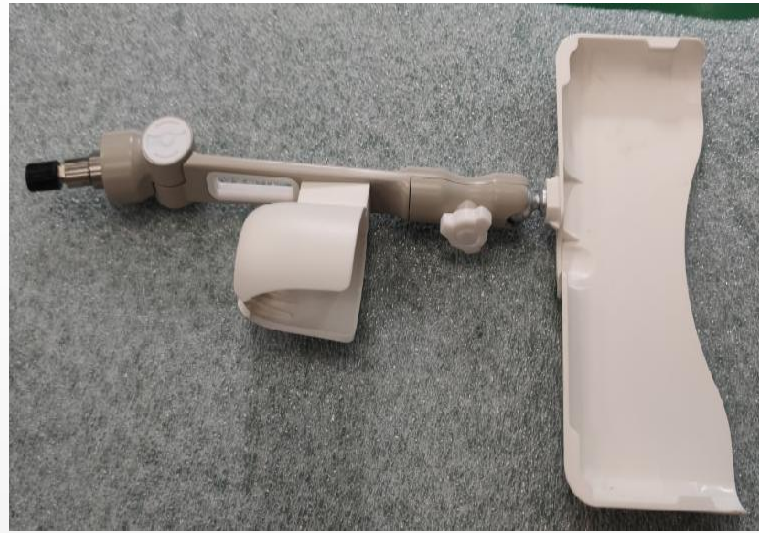
G. break open the cloth cover pin,
disconnect the air hose



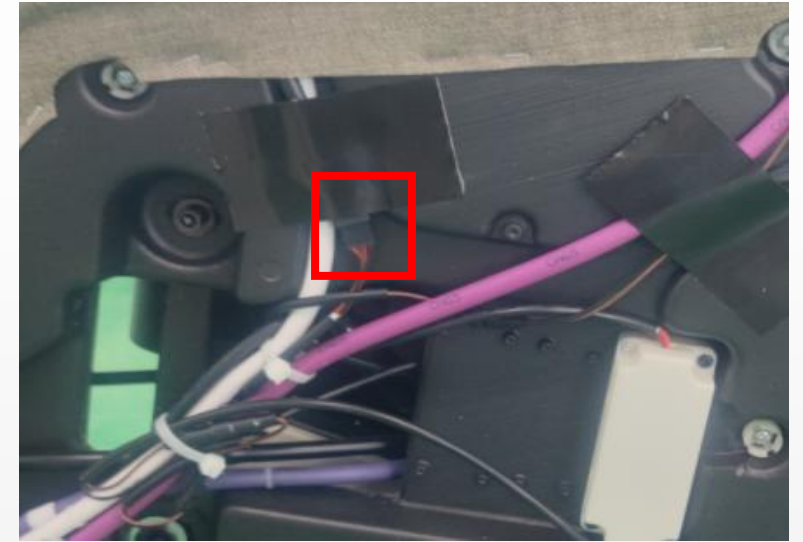
air bag



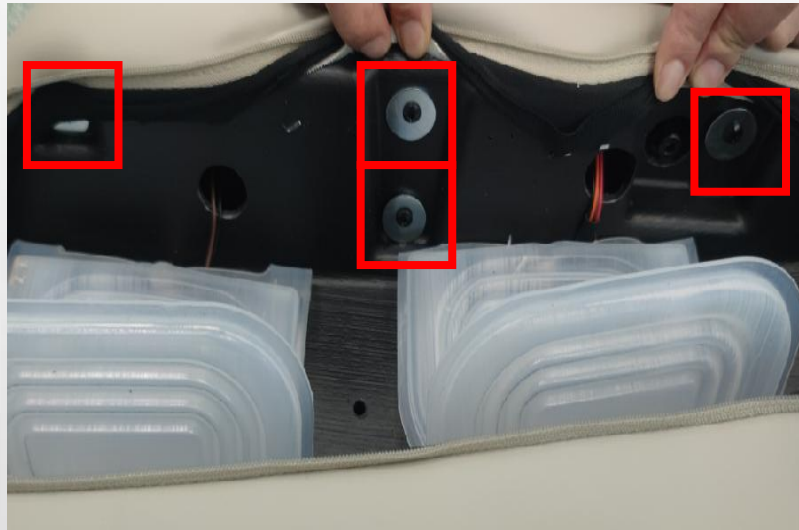
H. remove screws



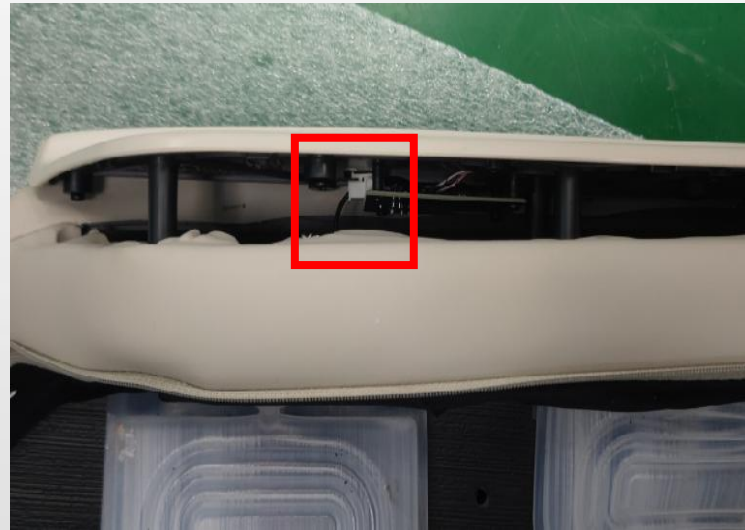
hand controller assembly



I .disconnect terminals



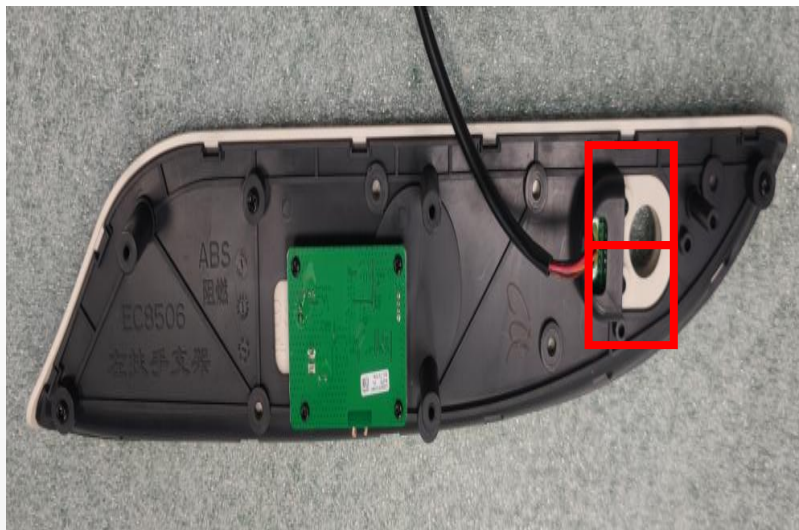
J. remove 4 screws



K .disconnect terminals



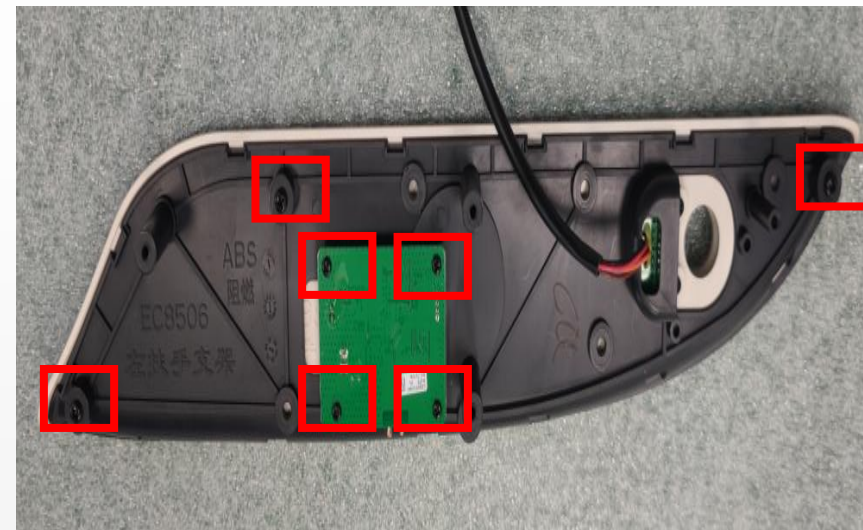
upper cover component of left armrest



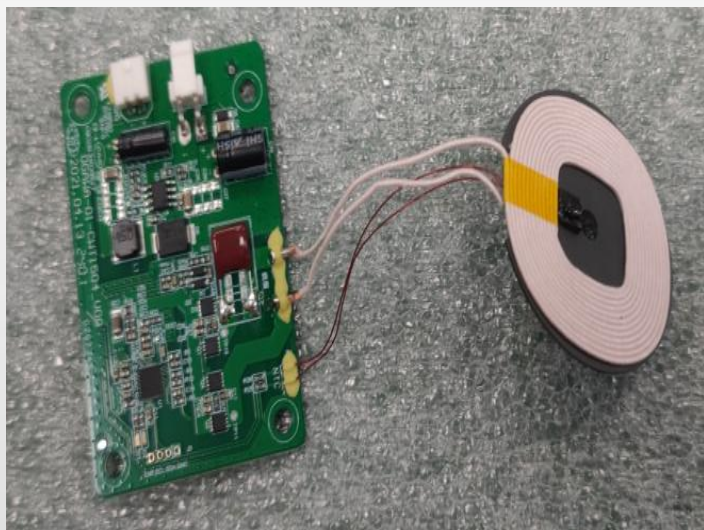
L. remove 2 screws



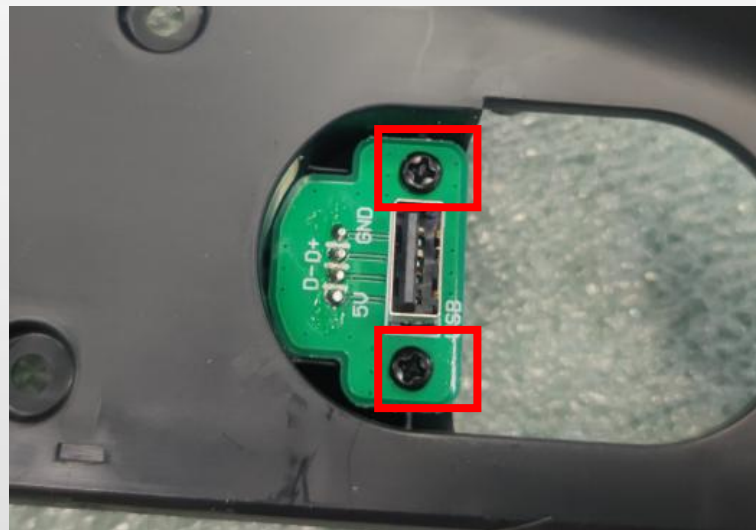
USB charge base



M. remove 7 screws



wireless charging



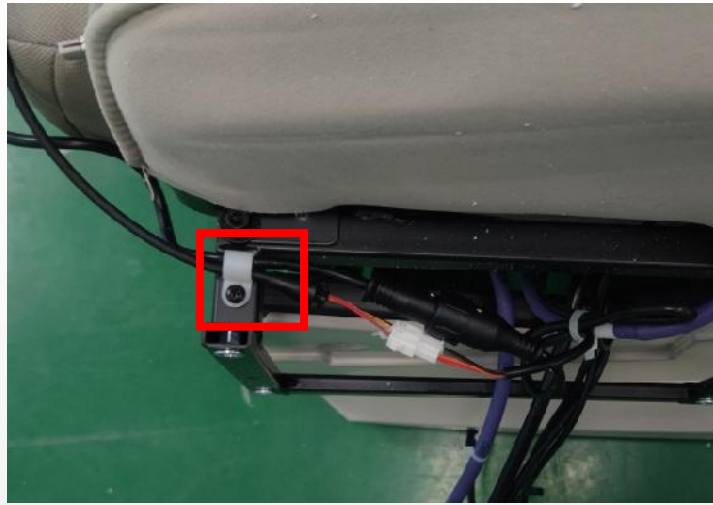
N. remove 7 screws



USB charge

7、disassembly of the pad control and pain detection:

A. remove left side panel (refer to disassembly of left side panel)



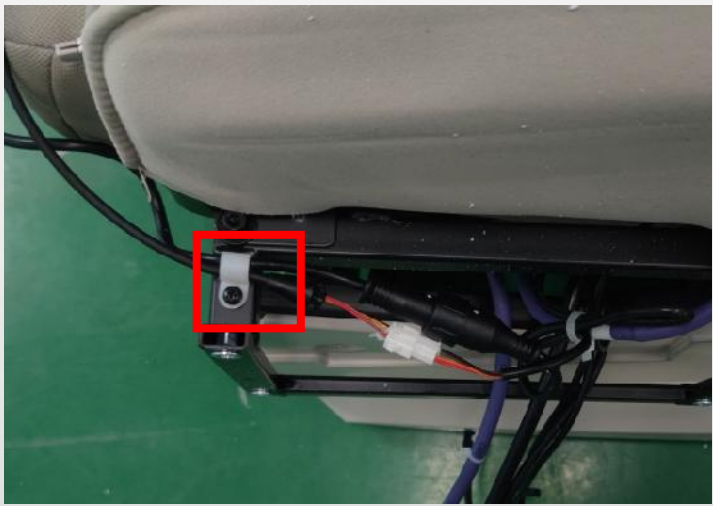
B. remove 1 screws



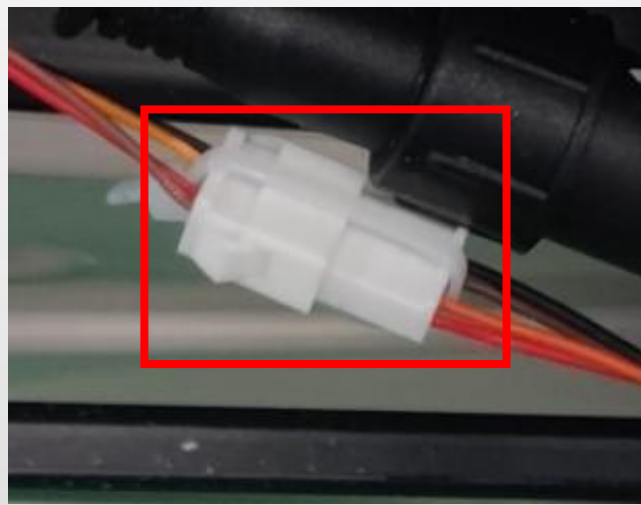
C. discontenct the terminal



pad control



B. remove 1 screws



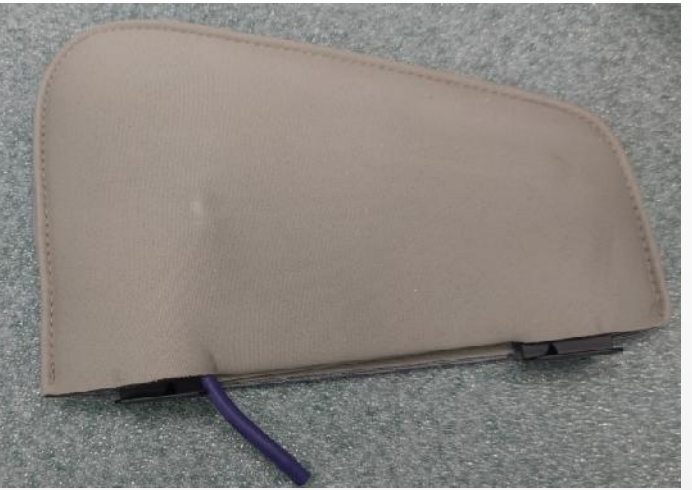
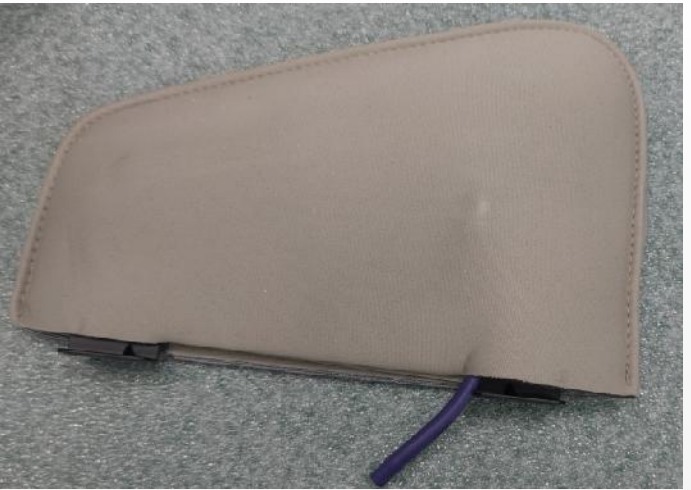
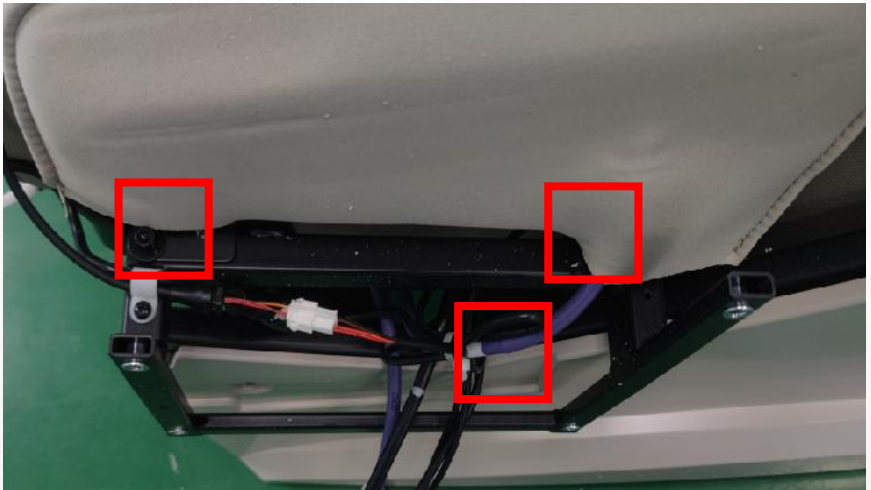
C. cut the cable tie



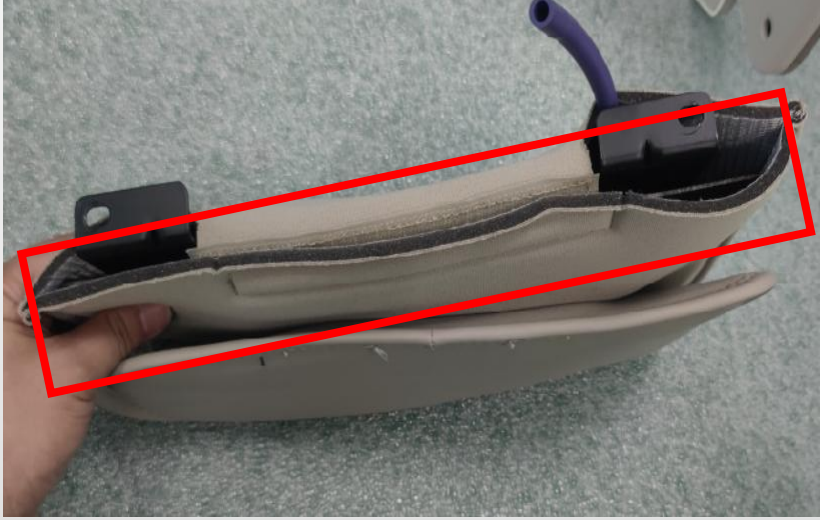
pain detection

8、disassembly of side seat:

A. remove left side panel and remove right side panel (refer to disassembly of left side panel)



B. remove 2 screws, disconten the air hose

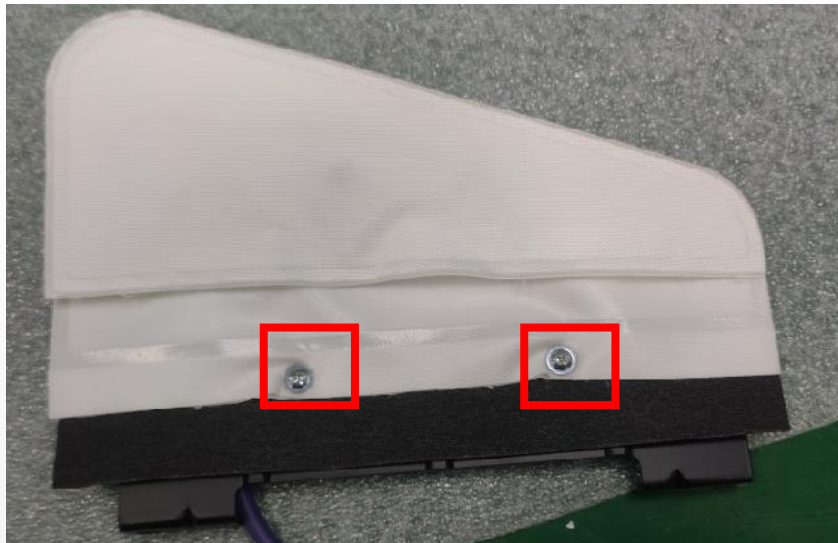


side seat unit



C. remove the cover

side seat cover



D. remove 2 screws



air bag of side seat

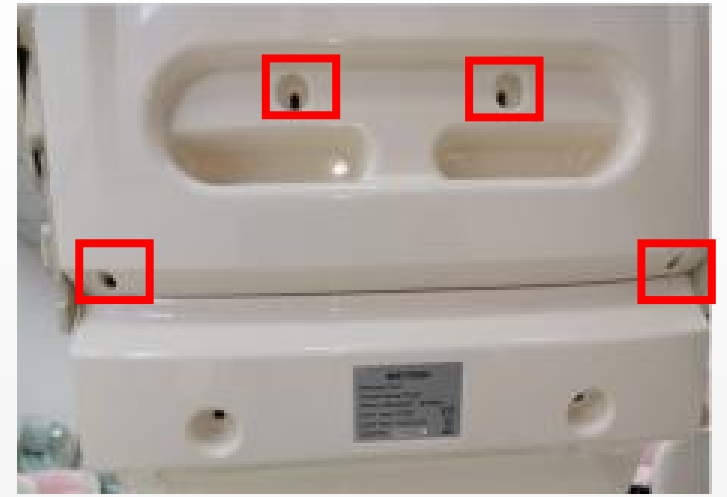
9、 disassembly of rear cover:



A..unzip the zipper



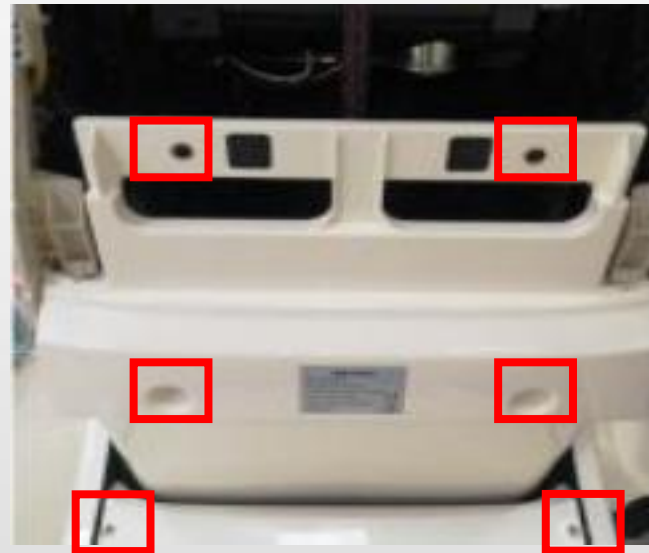
B. remove 5 screws



C. remove 4 screws



rear hood cover



D. remove 6 screws

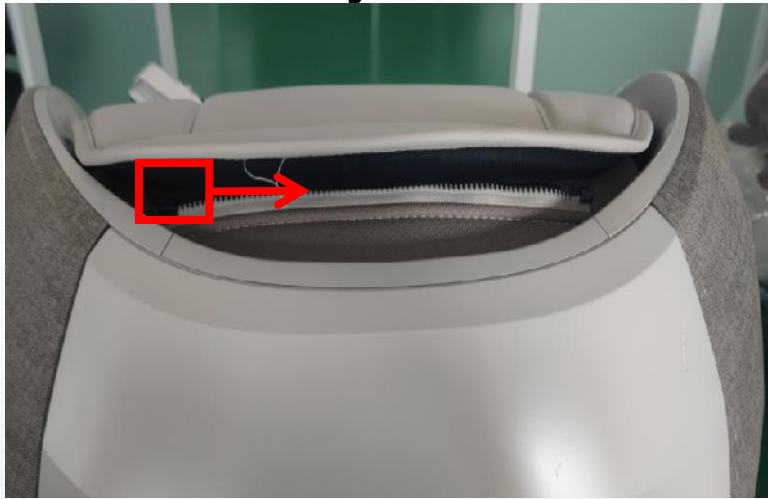


E.rear cover



F.Protective cover

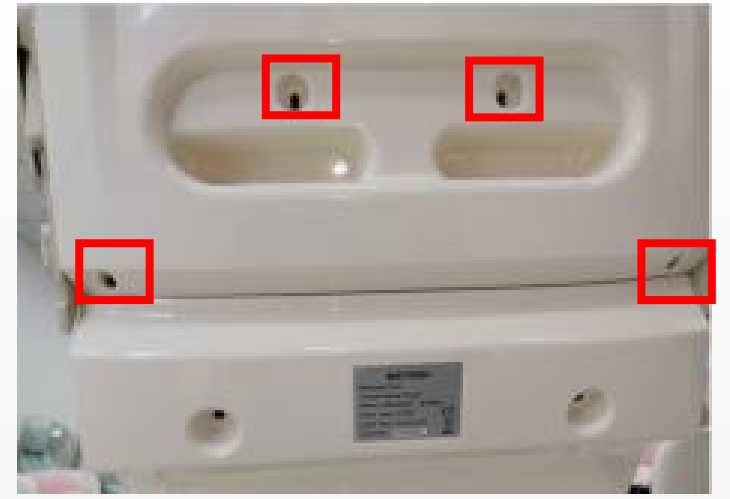
10、 disassembly of the hood:



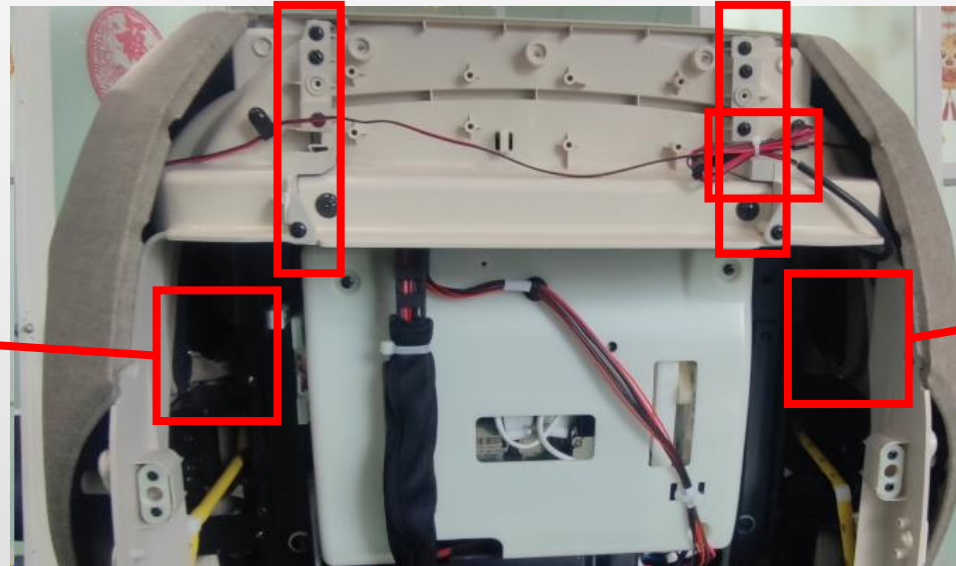
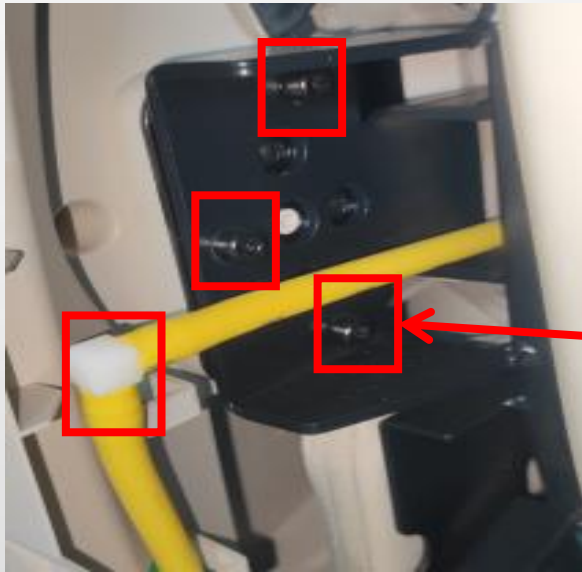
A..unzip the zipper



B. remove 5 screws



C. remove 4 screws



D. remove the screws, disconnect the terminal and air hose



left inner hood



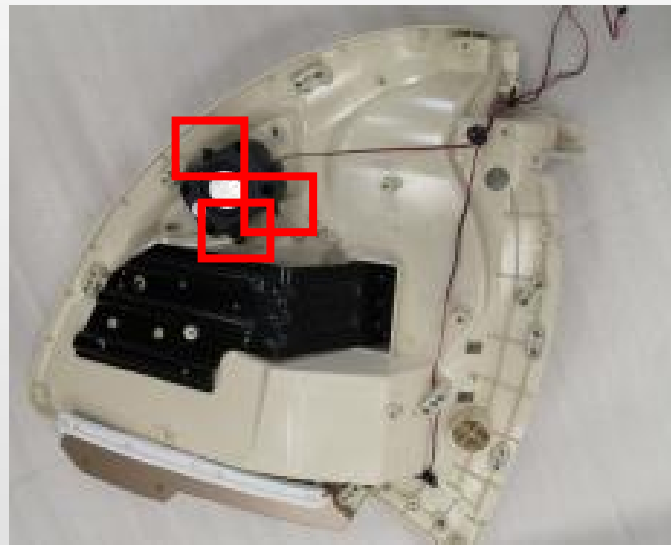
right inner hood



E.remove the screws



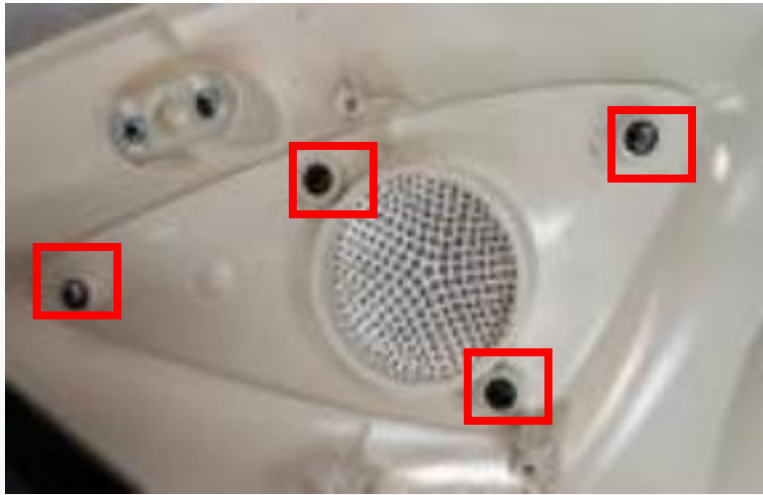
take down the hood cover



F.remove 3 screws



horn



G.remove 4 screws



speaker cover



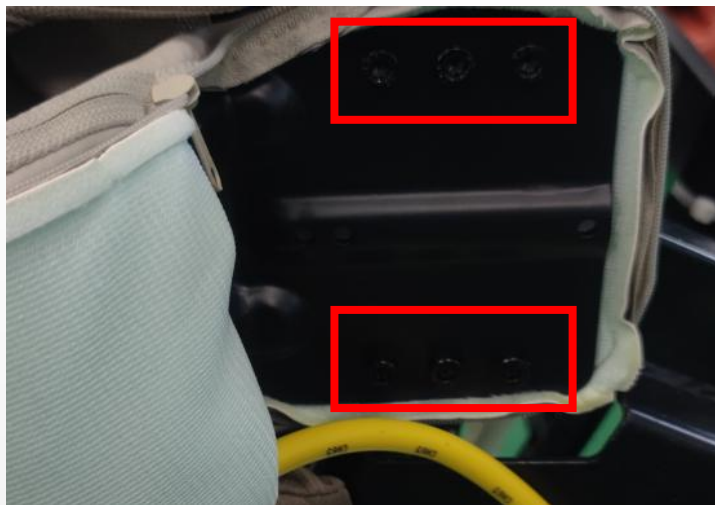
H.remove 2 screws



inner middle hood

11、 disassembly of the shoulder:

A. remove hood (refer to disassembly of the hood)



B.unzip the zipper



C.remove 6 screws



left shoulder unit



D.remove 6 screws

E.remove 6 screws

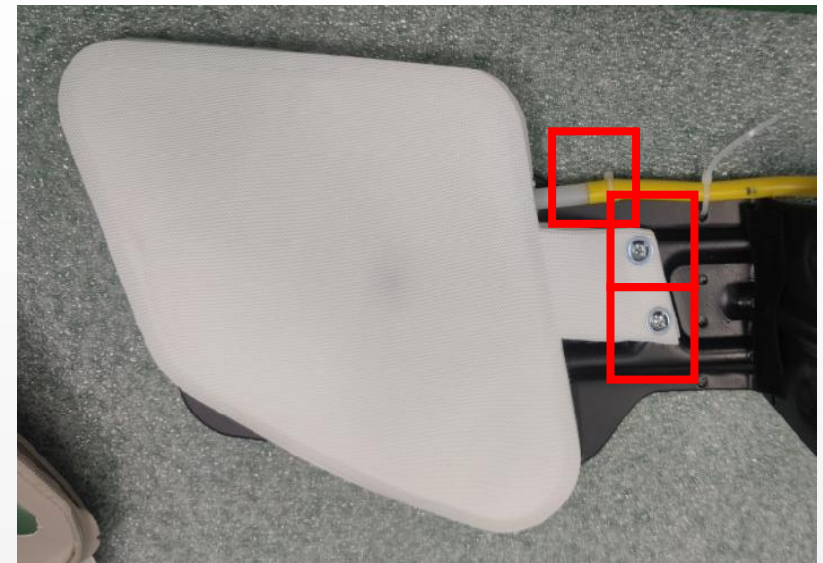
right shoulder unit



F.unzip the zipper



shoulder leather cover



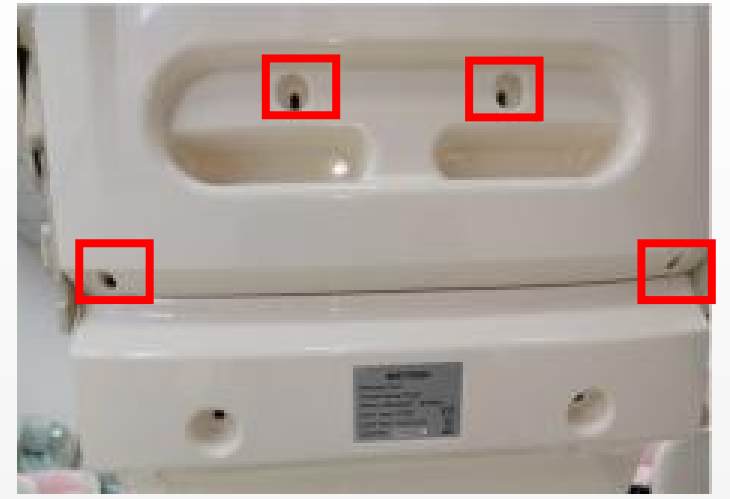
G.remove 4 screws,disconnect the air hose



A..unzip the zipper



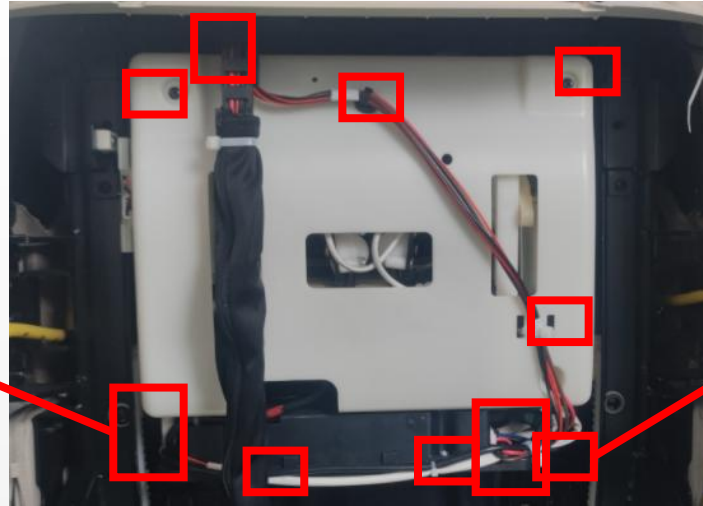
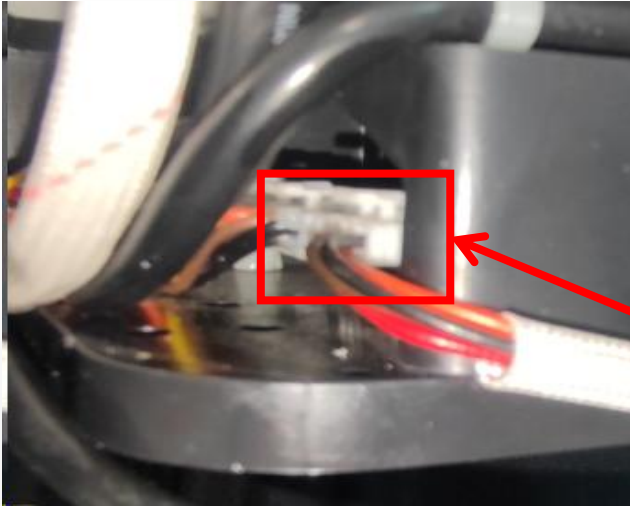
B. remove 5 screws



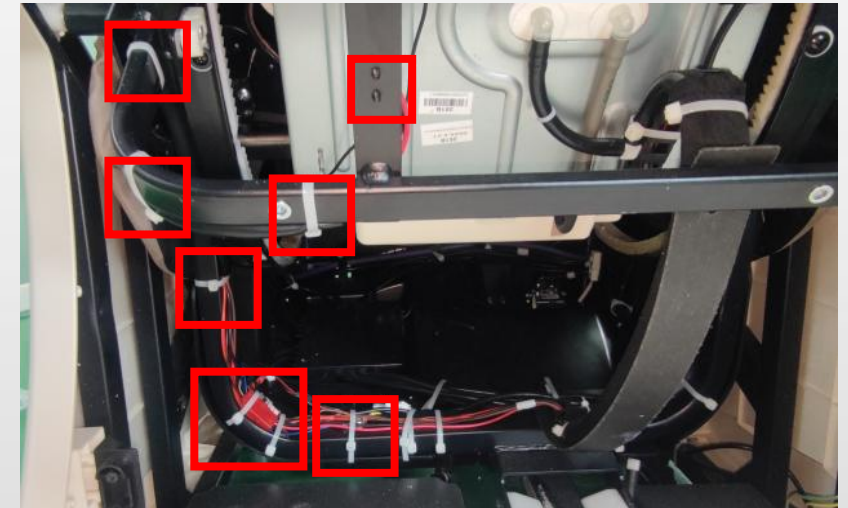
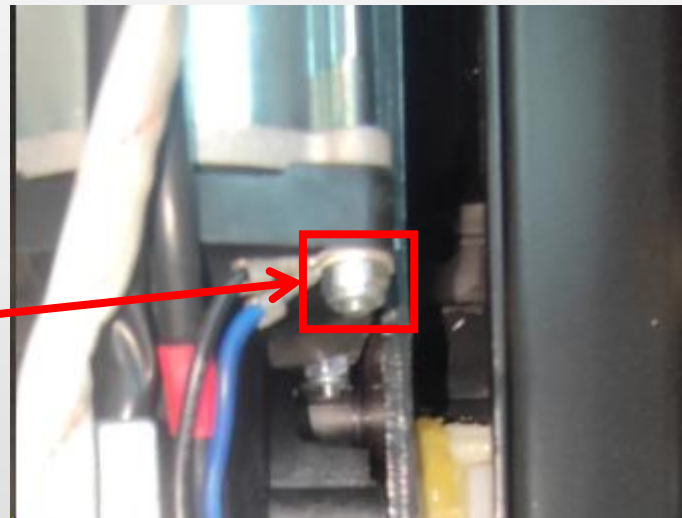
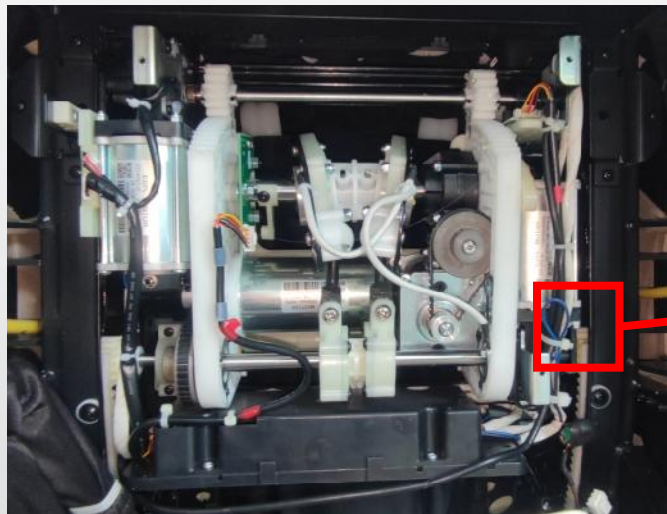
C. remove 4 screws

13、disassembly of the backrest cable:

A. remove the rear cover (refer to disassembly of the rear cover)

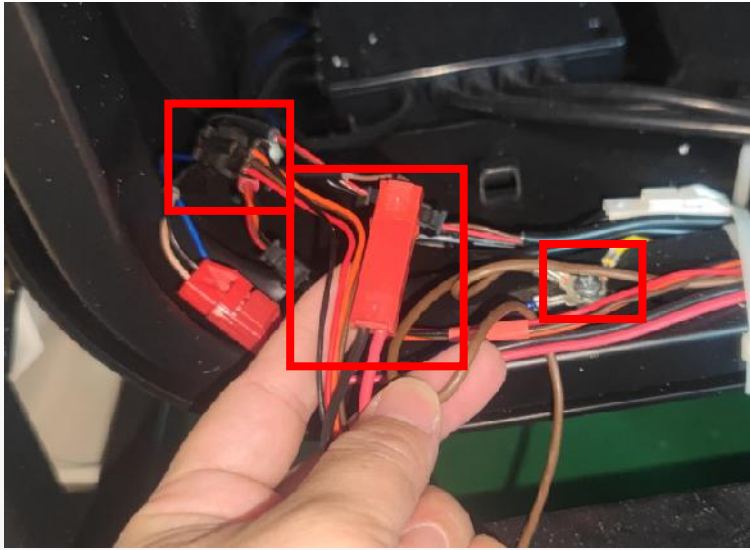


B.remove the screws, cut cable tie



C.remove the screws

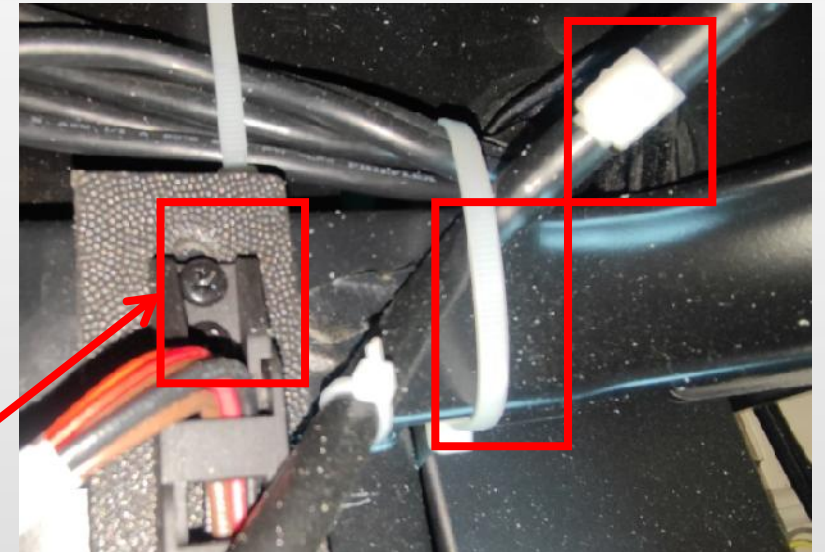
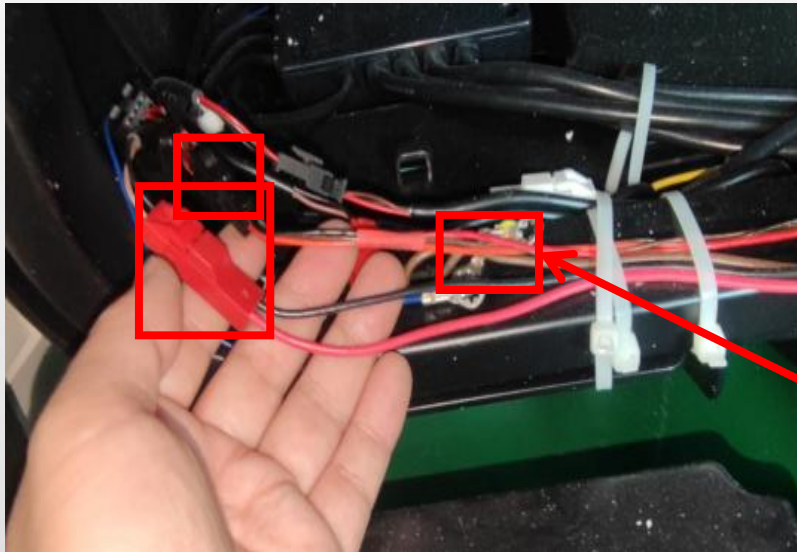
D.remove the screws, cut cable tie



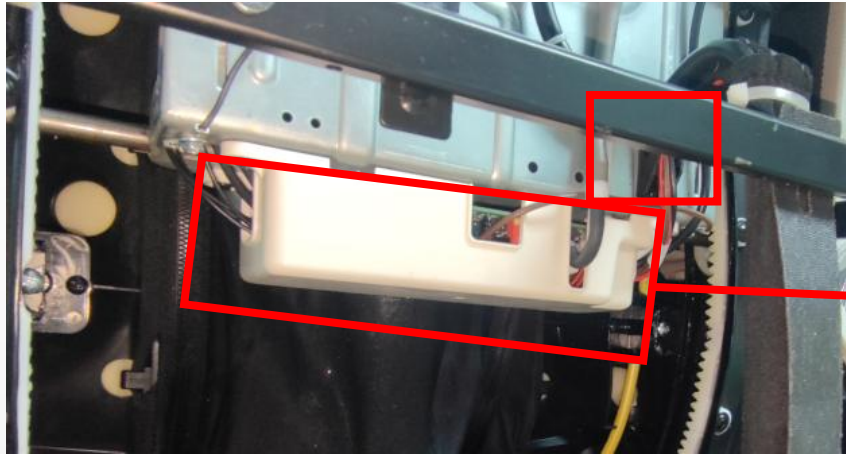
E. discontenent the terminals, remove the 1 screw



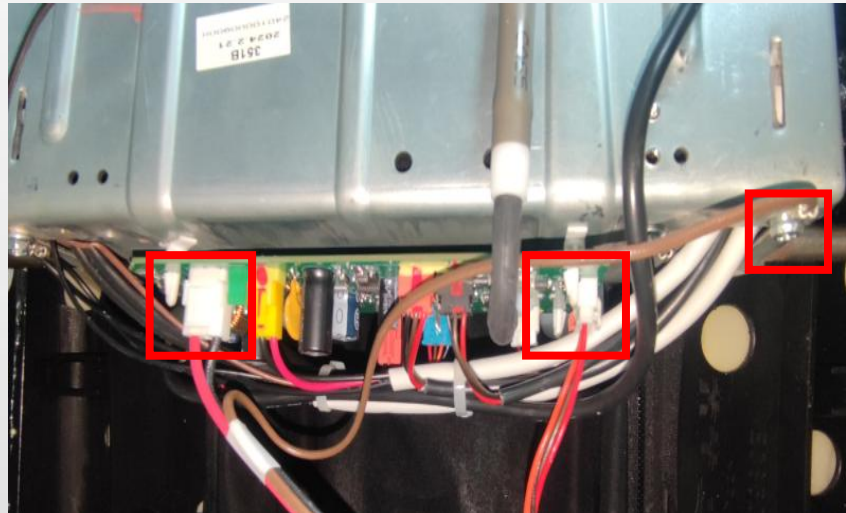
upper backrest cable



F. discontenent the terminals, remove the screw, cut cable tie, disconnect the air hose



G.remove the screw



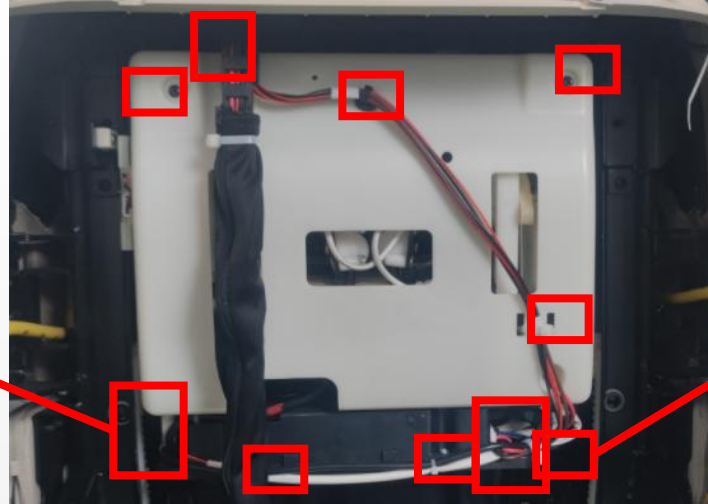
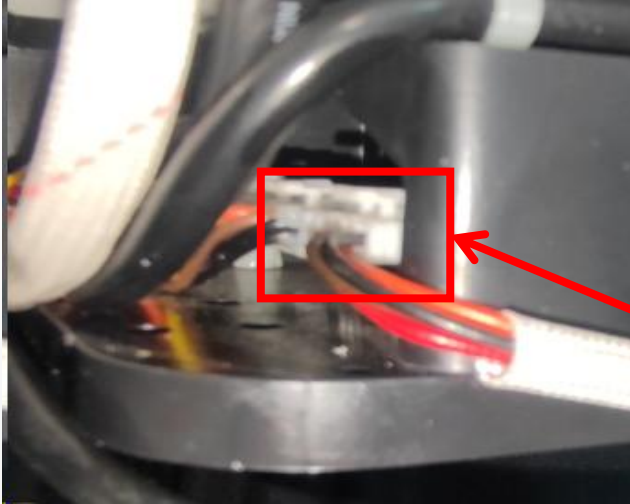
H.discontent the terminals, remove the 1 screw



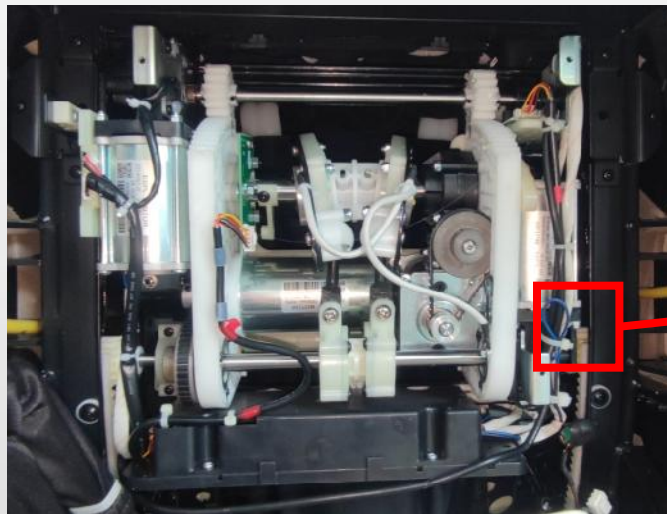
under backrest cable

14、disassembly of the Gearbox:

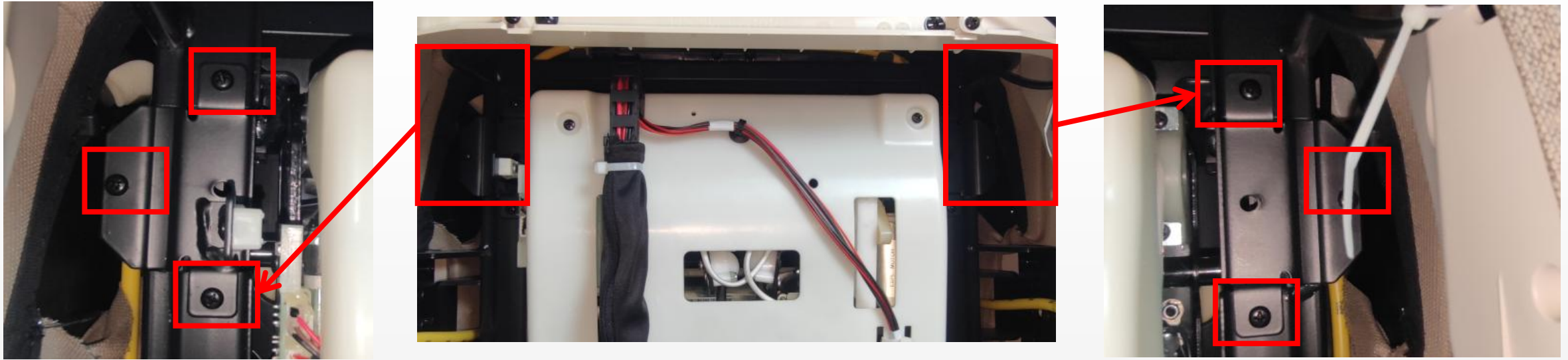
A. remove the rear cover (refer to disassembly of the rear cover)



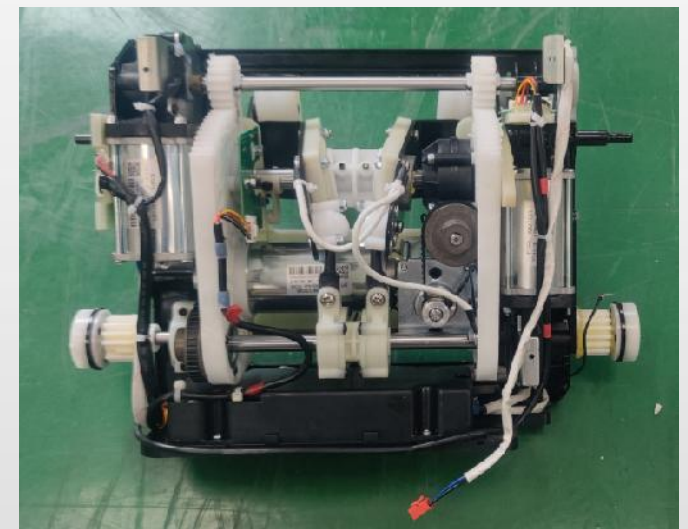
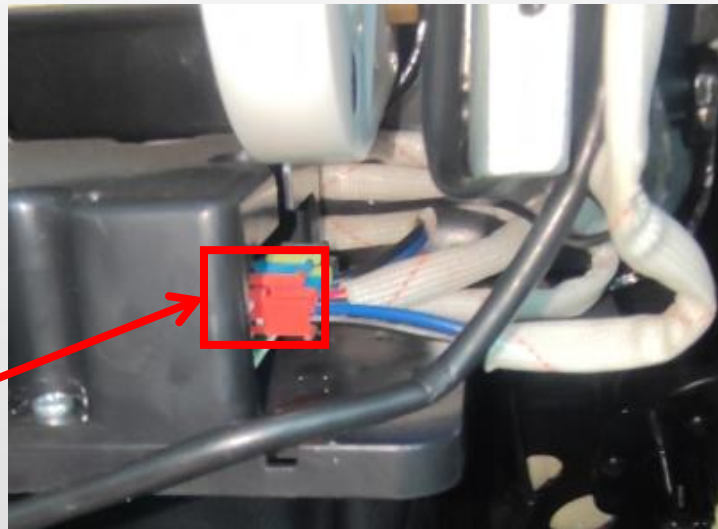
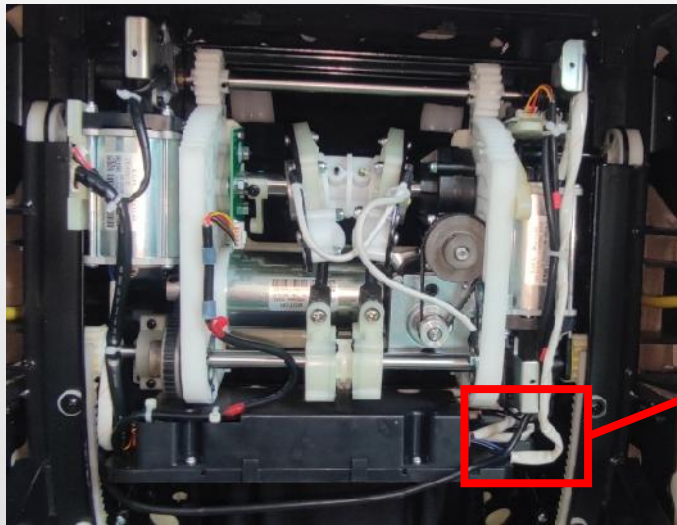
B.remove the screws, cut cable tie



C.remove the screws

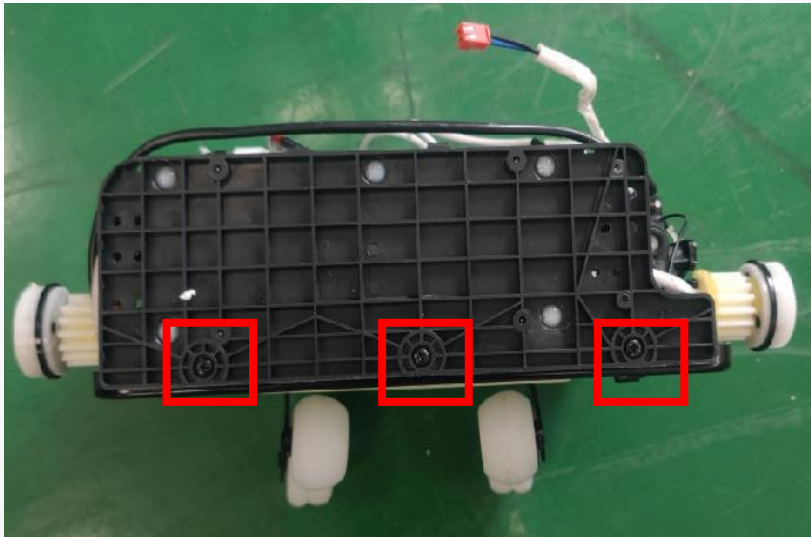


D.Remove the baffle both side

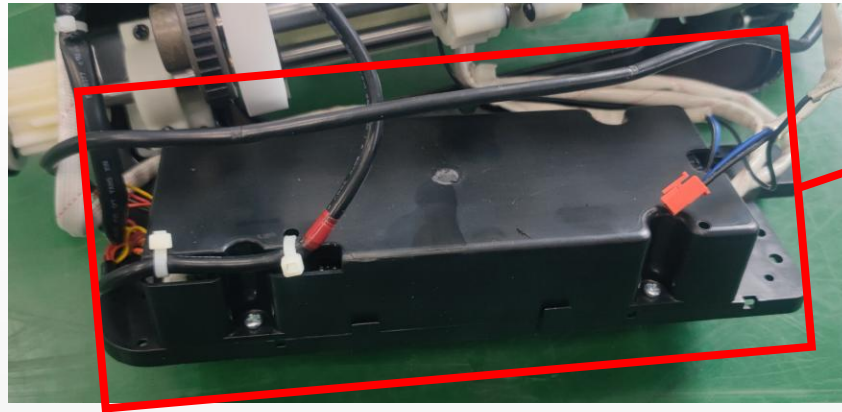


E.connect red terminal with a 24V power, mechanism go up

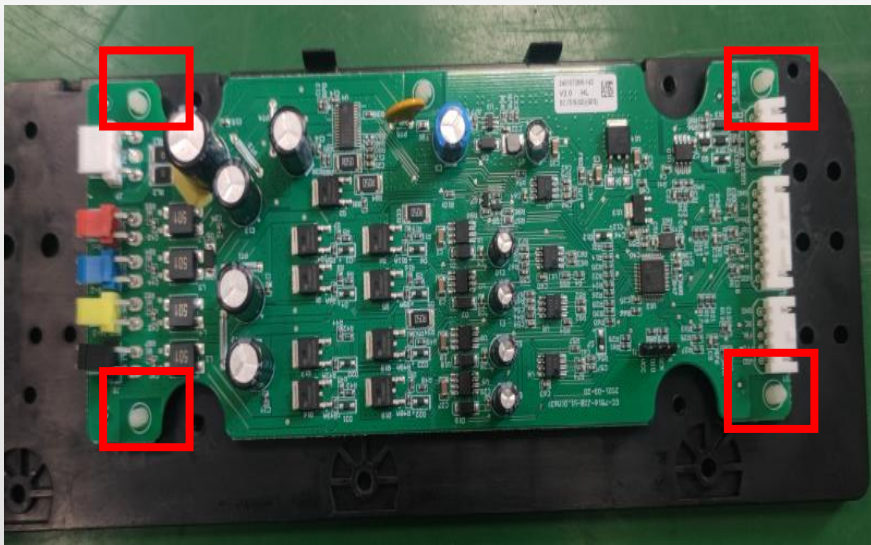
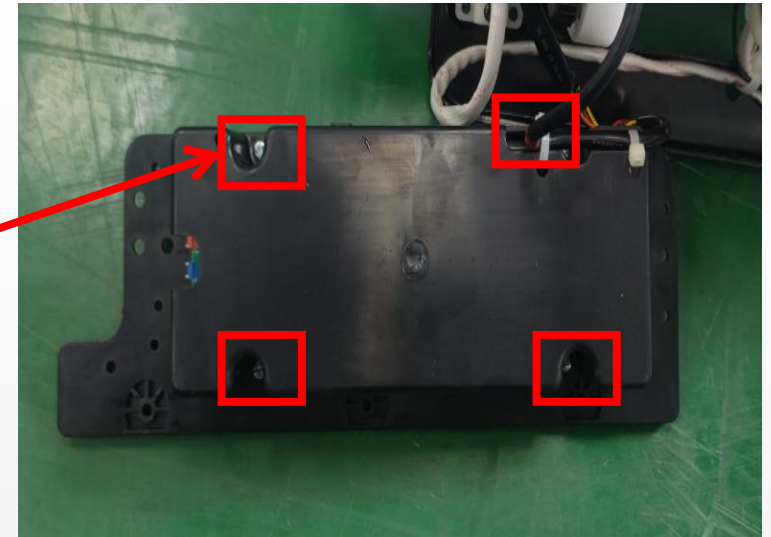
upper Gearbox



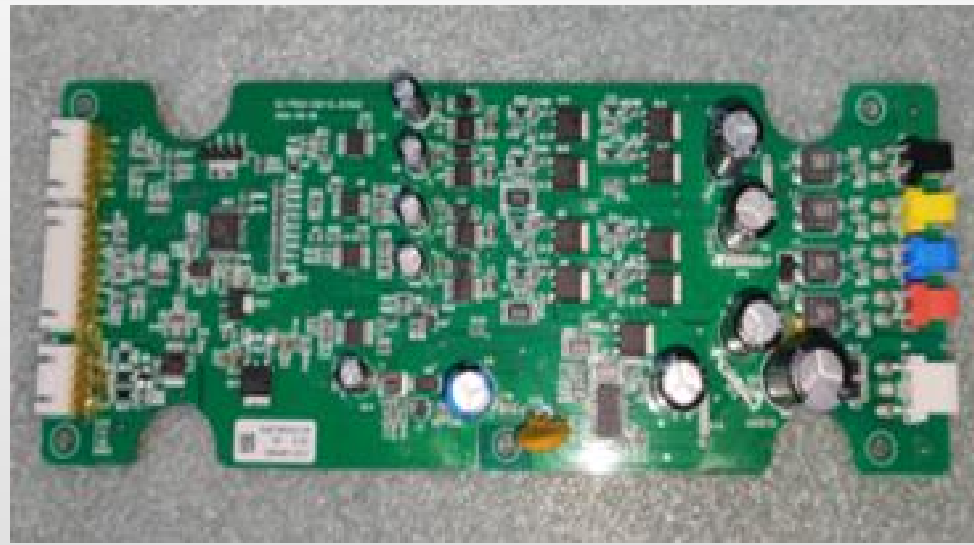
F.remove the 3 screw



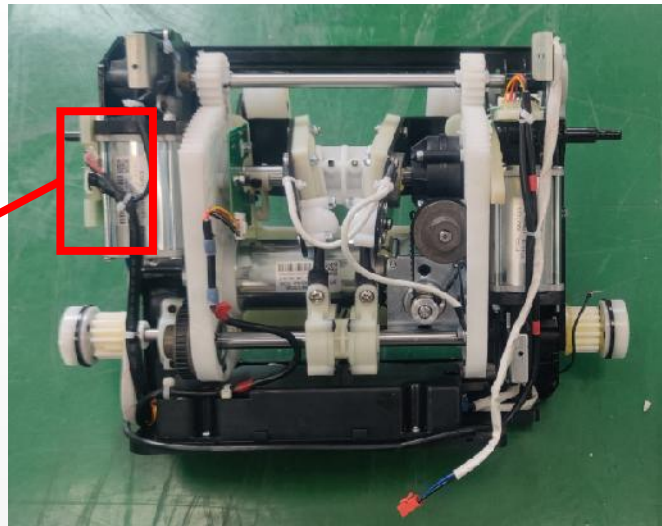
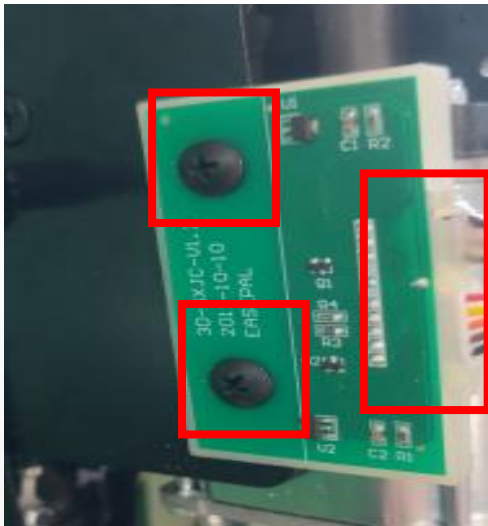
G.discontent the terminals,remove the 4 screw



H.remove the rack



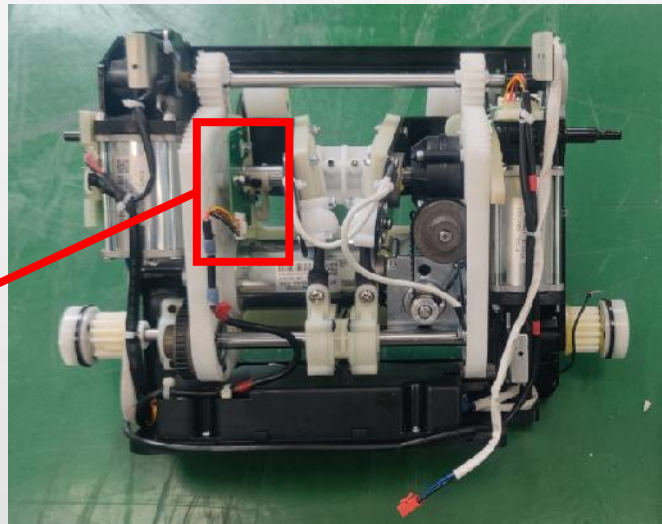
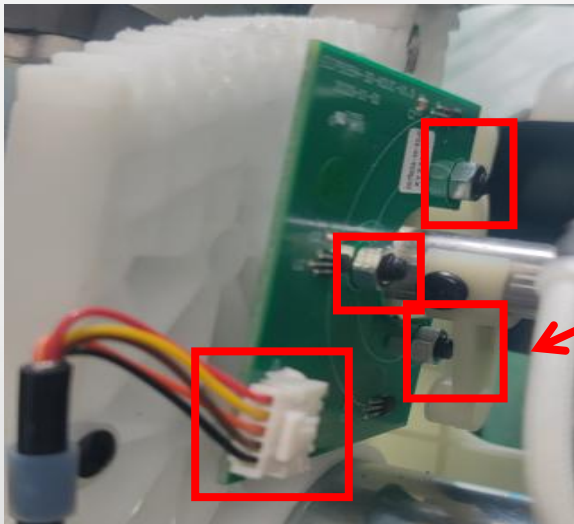
upper Gearbox PCB



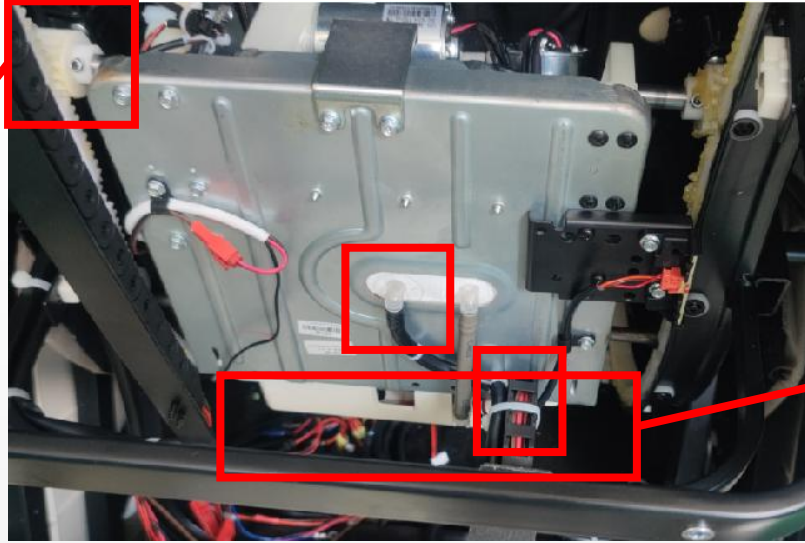
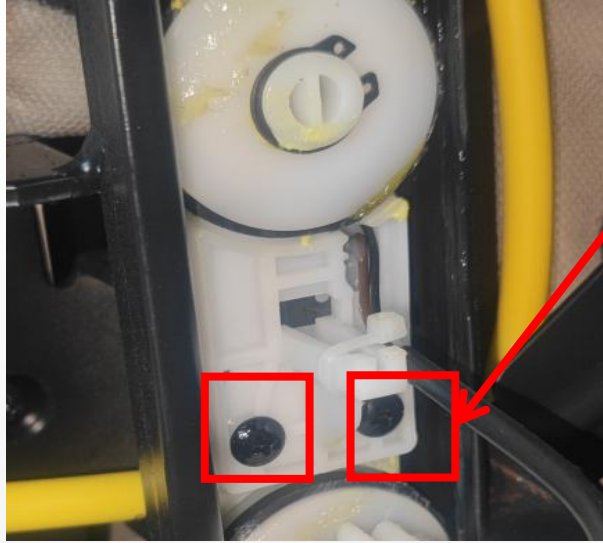
I. discontent the terminals,remove the 2 screw



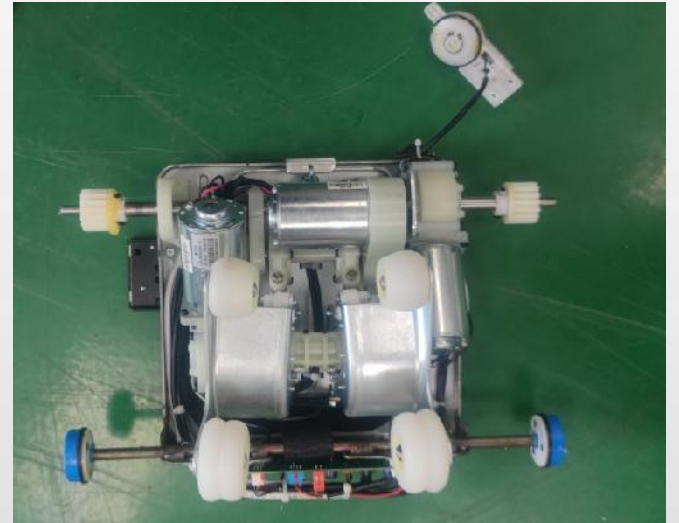
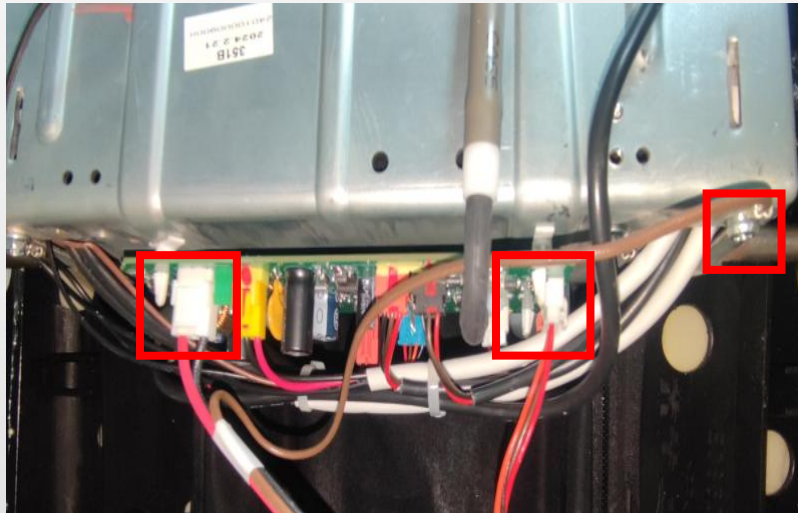
up and down detection PCB



J. discontent the terminals,remove the 3 screw



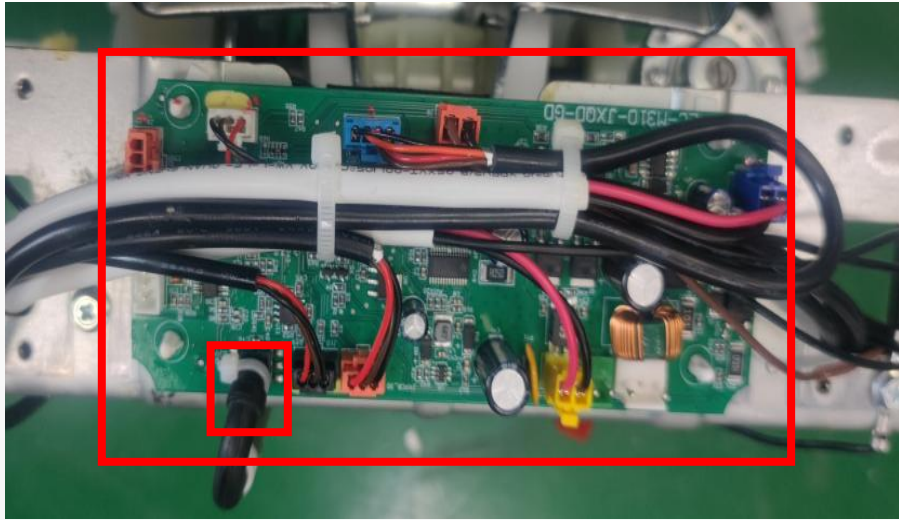
K.remove the screw,disconnect the air hose



L.discontenct the terminals, remove the 1 screw
8507B massage chair service guide

M.connect red terminal with a 24V power,
mechanism go up

under Gearbox



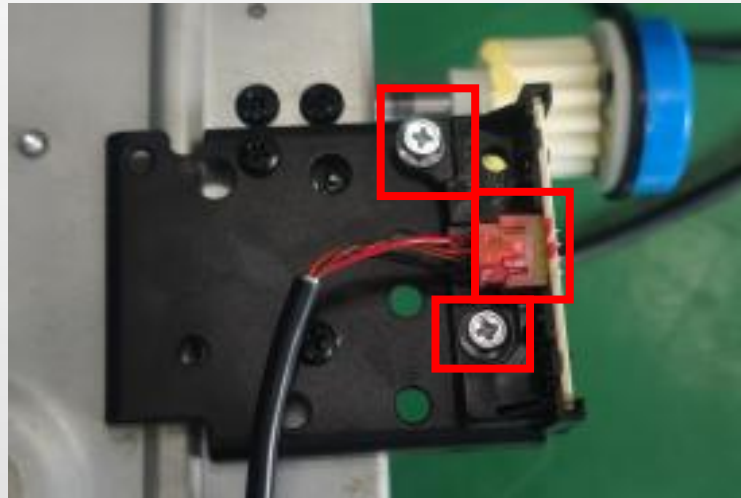
N.disconnect the, disconnect the air hose,remove the rack



under Gearbox PCB



O.disconnect the terminals,remove the 2 screw



up and down detection PCB

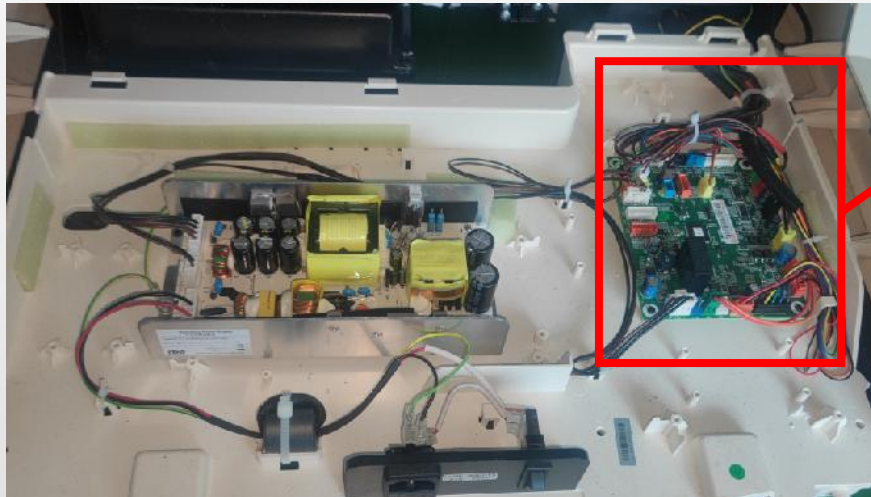
15、 disassembly of the main PCB box:



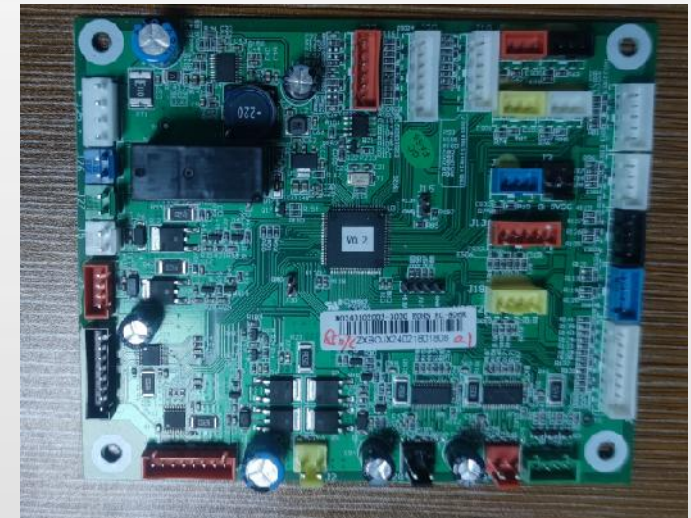
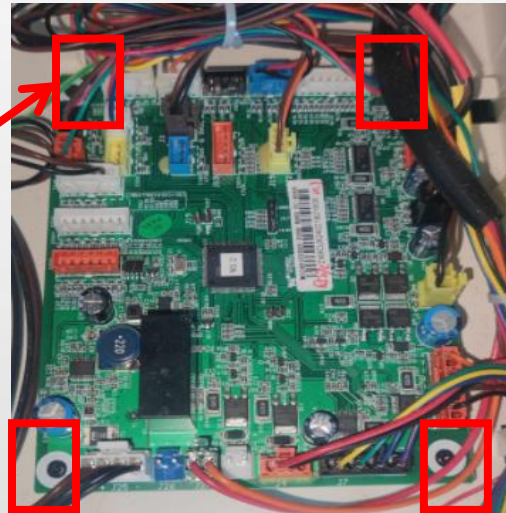
A.remove 3 screws, open the main PCB box



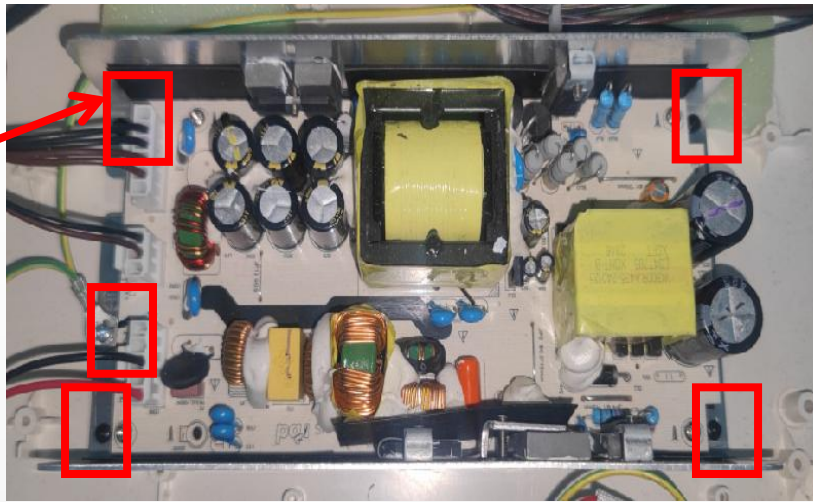
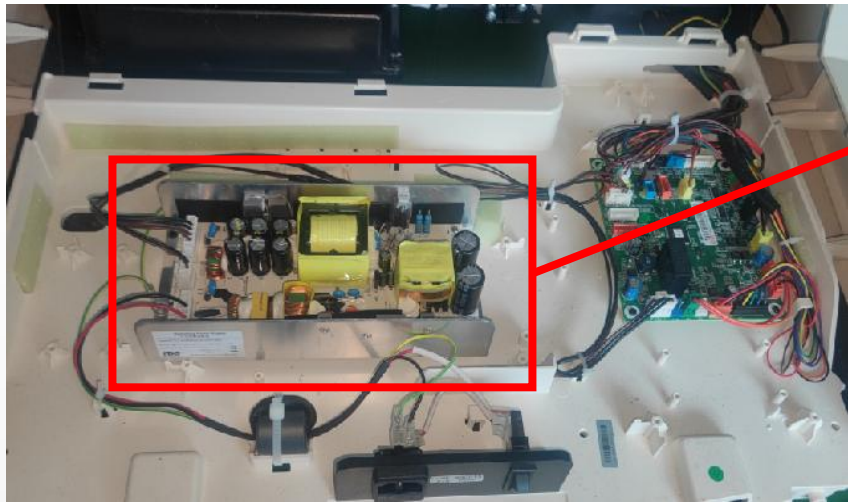
main PCB box cover



B.disconnect the terminals, remove 4 screws



main PCB



B.disconnect the terminals, remove 5 screws

16、disassembly of air pump:



A.remove 3 screws, open themain PCB box



B.remove 2 screws



C.cut cable tie, disconnect the terminal



D.remove 4 screws



E.remove 4 screws



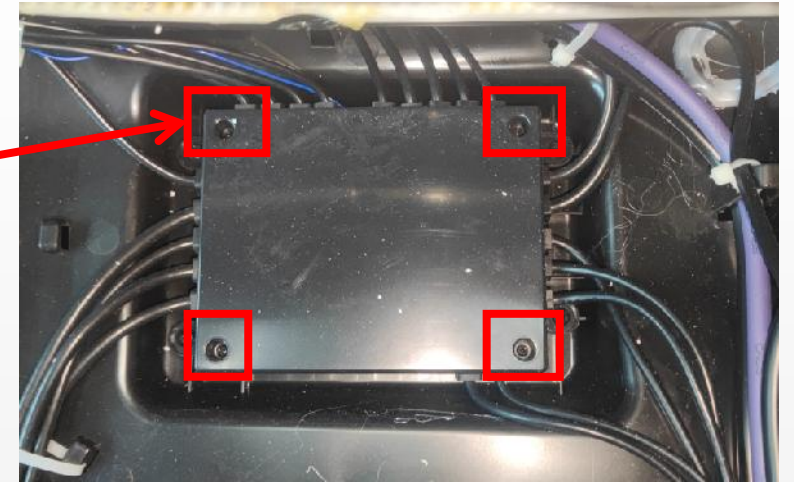
air pump

17、 disassembly of the underseat PCB and air valve:

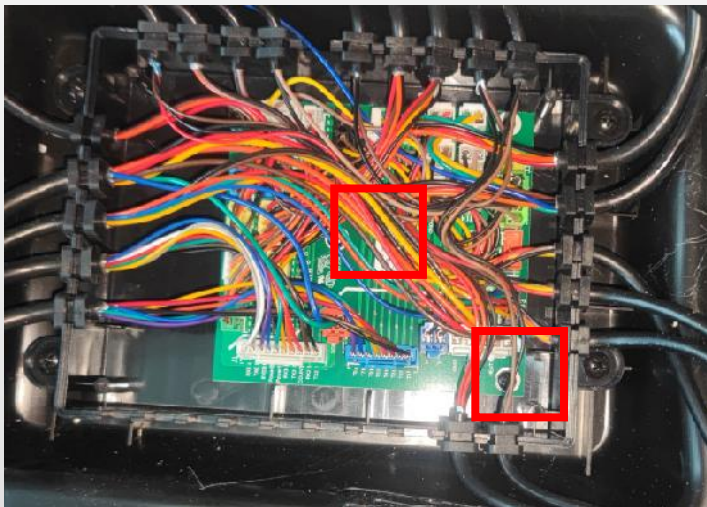
A. remove the backrest pad (refer to disassembly of the backrest pad)



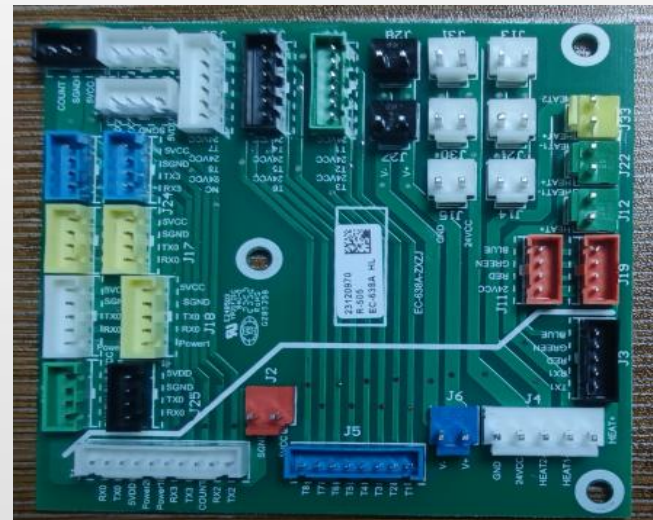
B.unzip the zipper



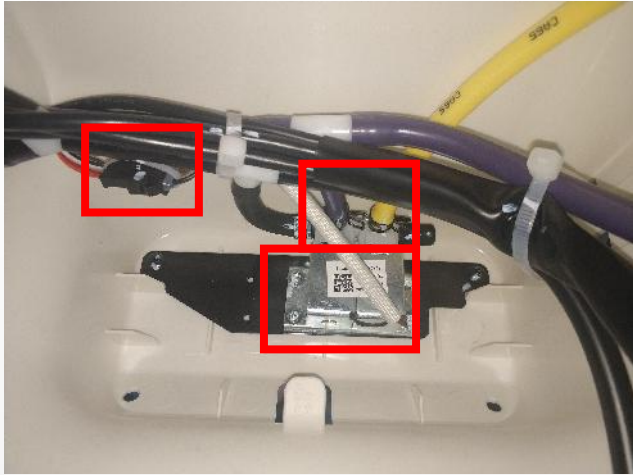
C.remove 4 screws



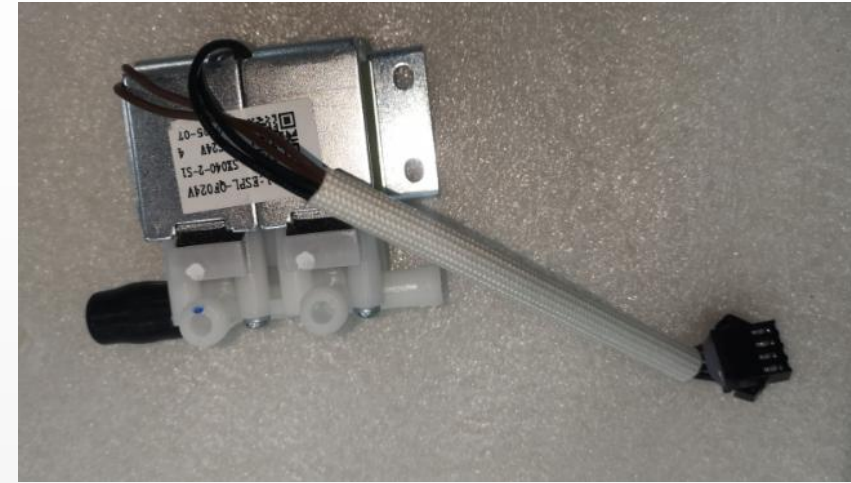
D.disconnect the terminals



underseat PCB

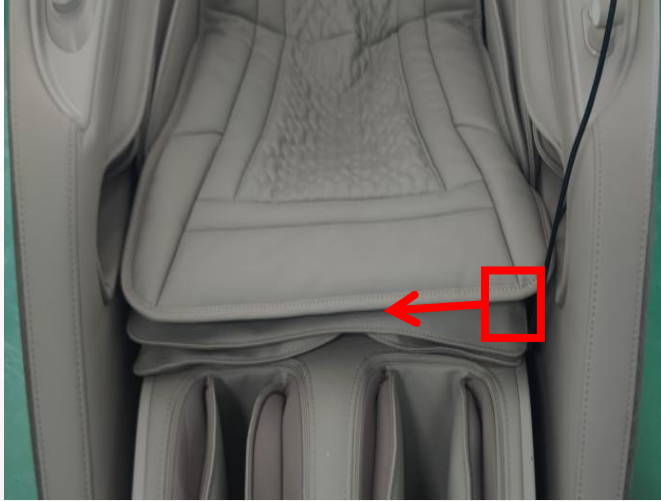


E. cut the cable tie, discontent the terminals,
remov 4 screws



air valve

17、 disassembly of the legrest:



A.unzip the zipper



B.unzip the zipper



C.Remove the blocking on both sides of the legrest



D.disconnect the terminal and air hose

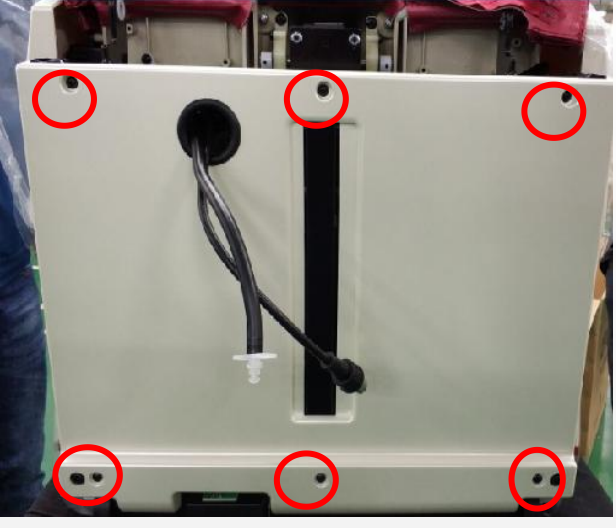
18、decomposition of the upper legrest:



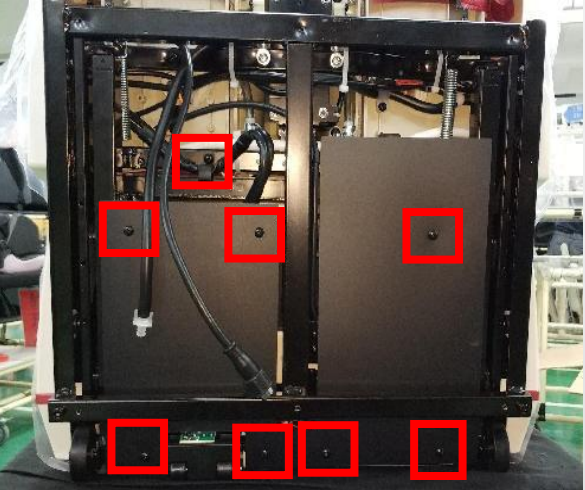
A. Bring your calves up to this position



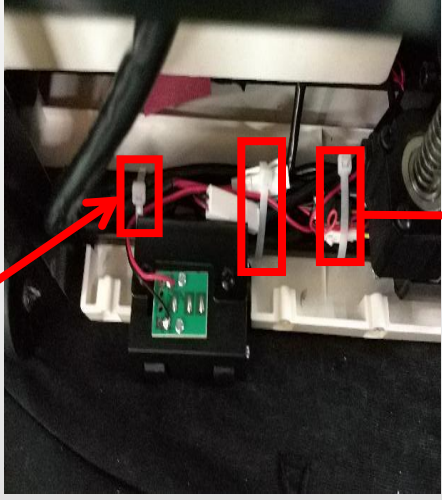
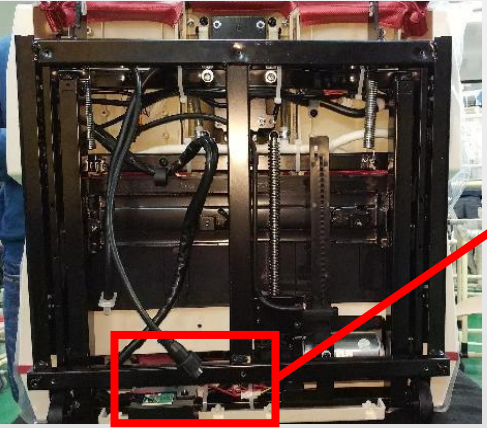
B. unzip the zipper



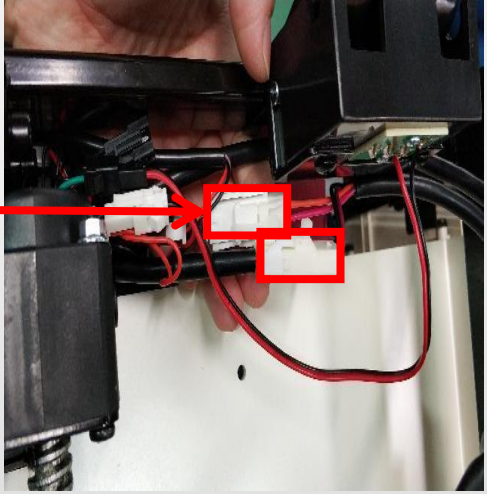
C. remove 6 screws

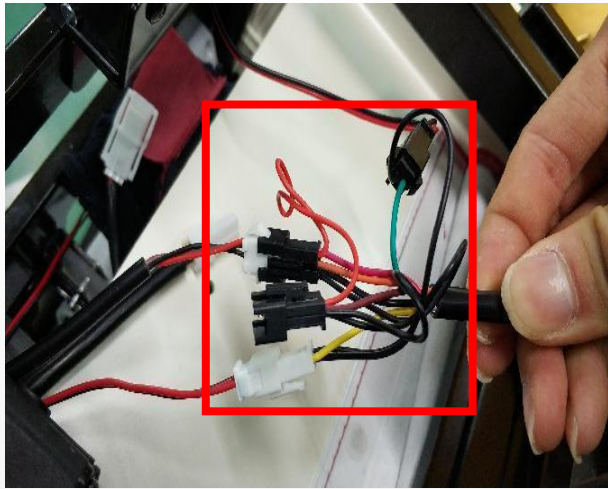


D. remove 8 screws

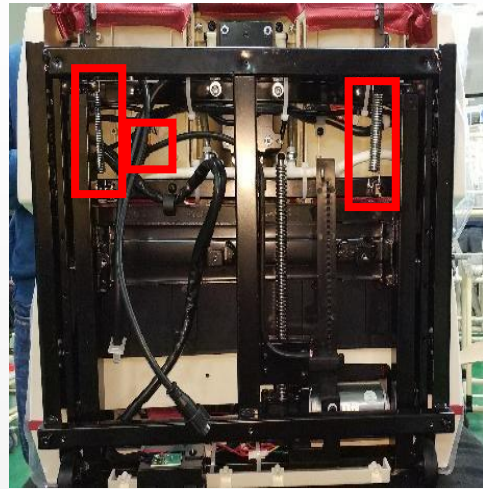


E. Cut off button

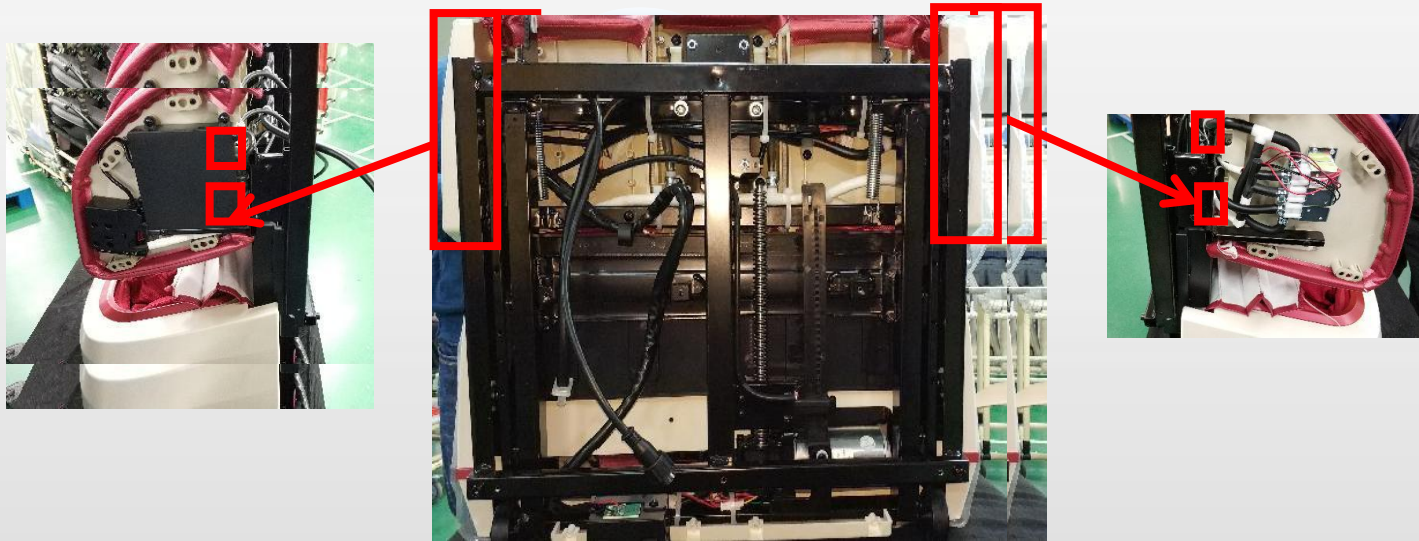
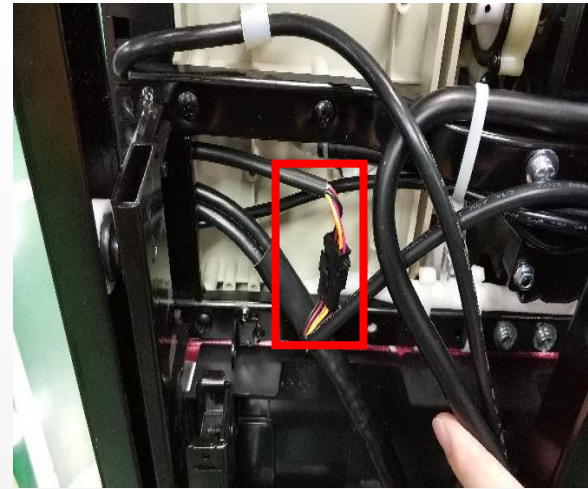




F.disconnect the terminals

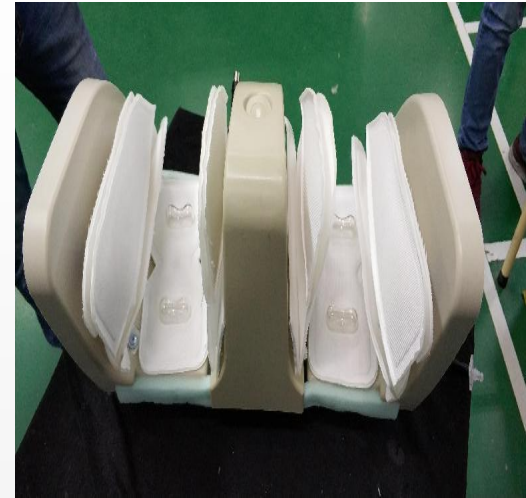
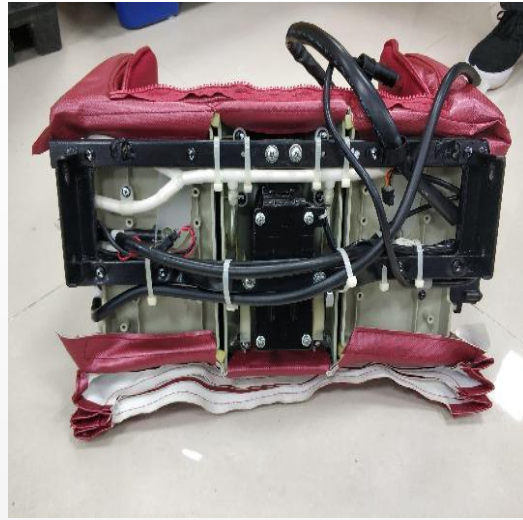


G.Remove the spring and discontent the terminals



H.remove 4 screws

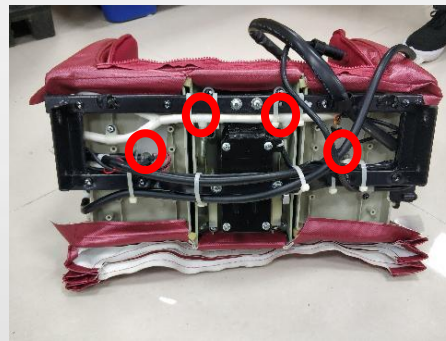




I. stick the Sticky, upper calf leather case can be replaced



J. remove 8 screws



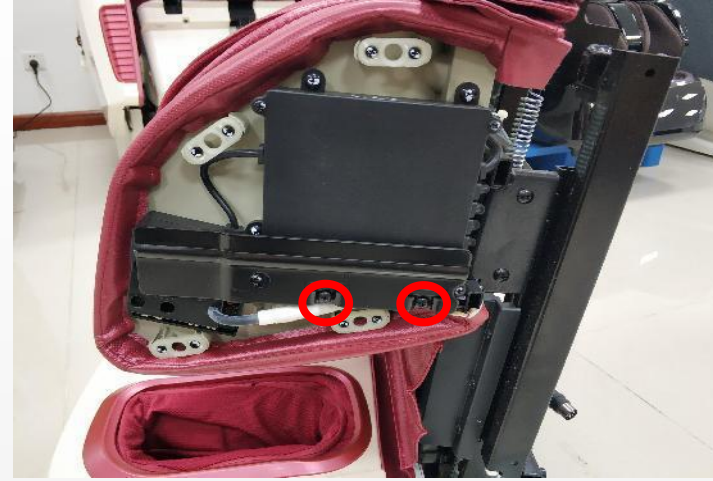
K. Pull out all the air pipes, All air bags can be replaced



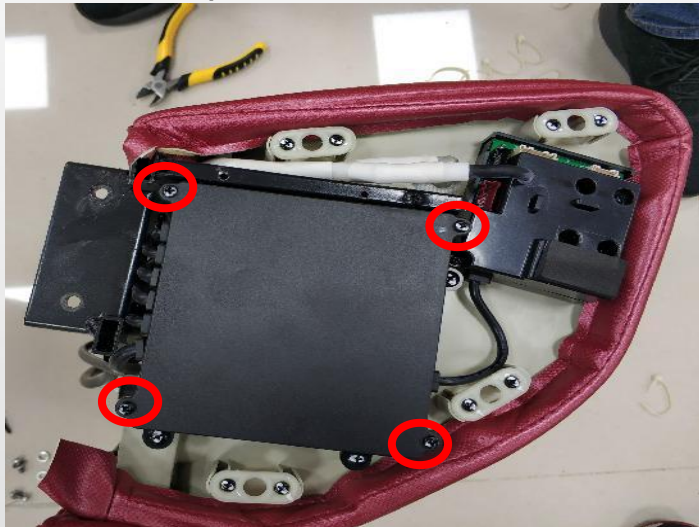
19、decomposition of the legrest PCB



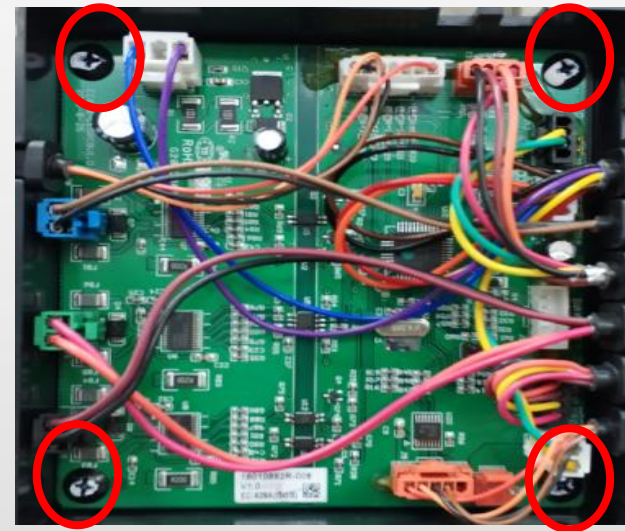
A. Open the cover



B. remove 2 screws



C. remove 4 screws



D. remove 4 screws, Unplug all terminals,
decomposition of the legrest PCB

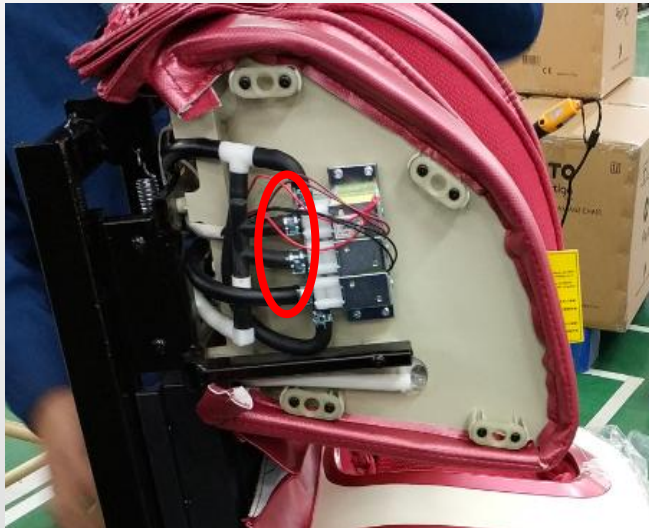
20、decomposition of the legrest Air valve



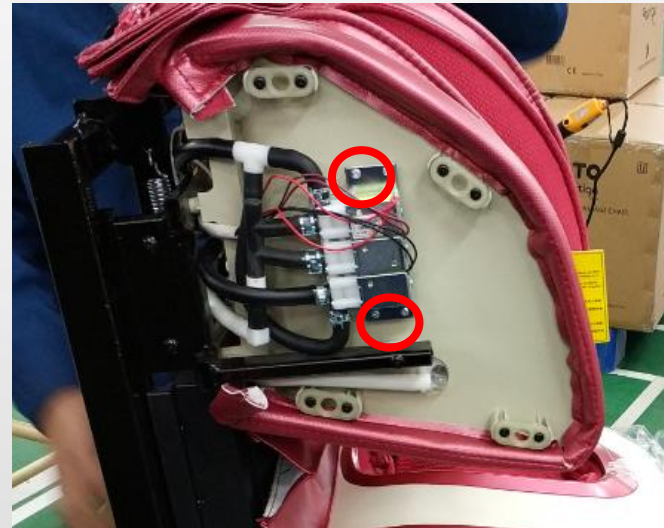
A. Open the cover



B. Cut off button, Unplug all terminals

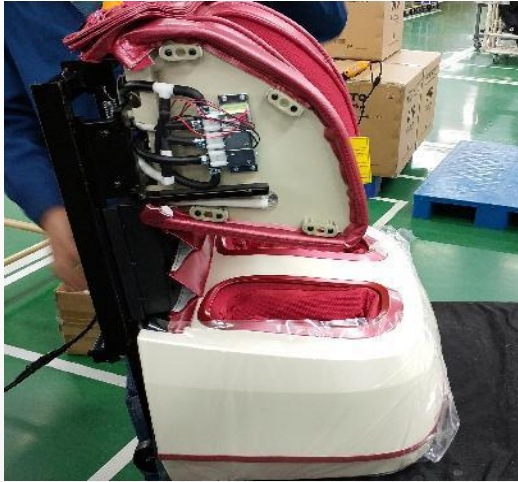


C. Pull out all the air pipes



D. remove 4 screws

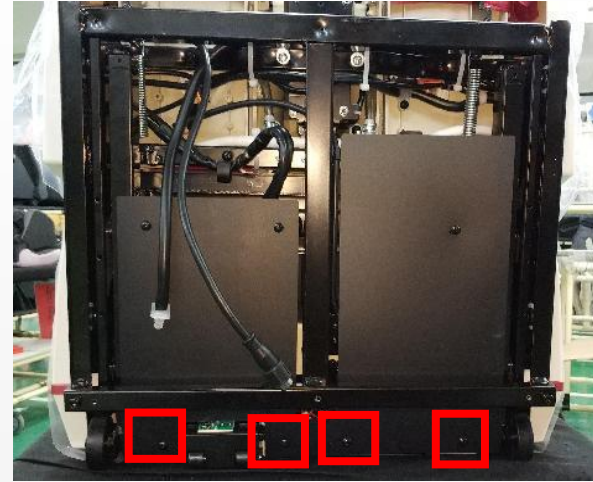
21、decomposition of the kneading motor unit of leg rest



A. Bring your calves up to this position



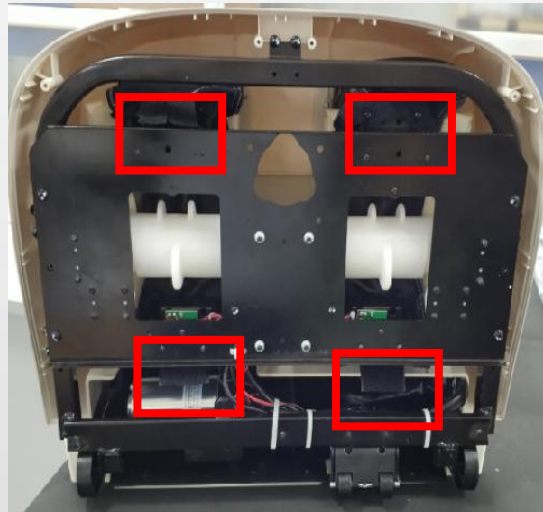
B. unzip the zipper



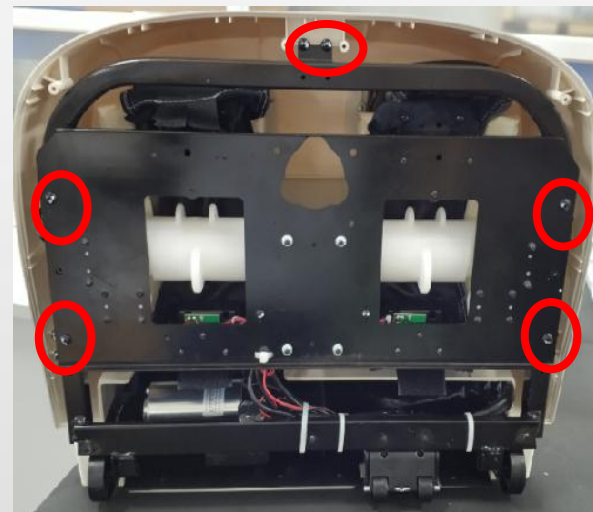
C. remove 4 screws



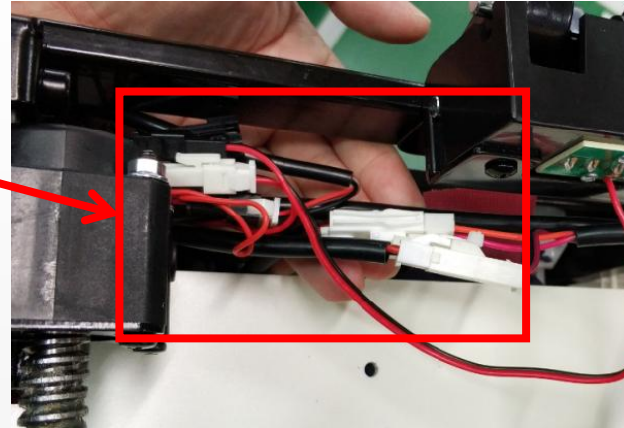
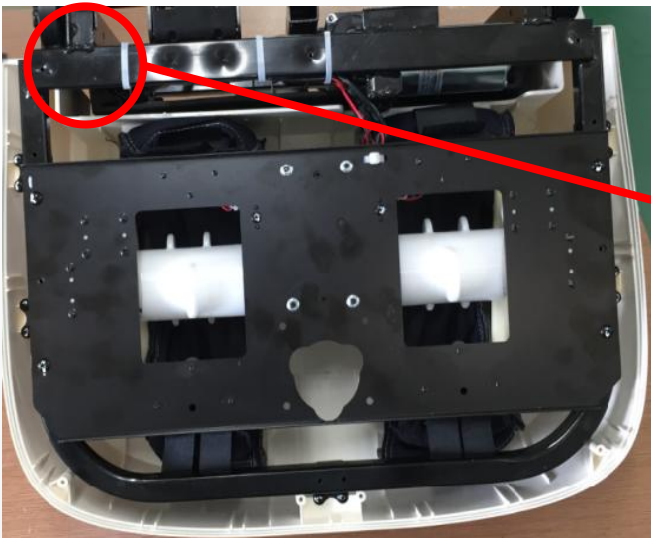
D. remove 9 screws



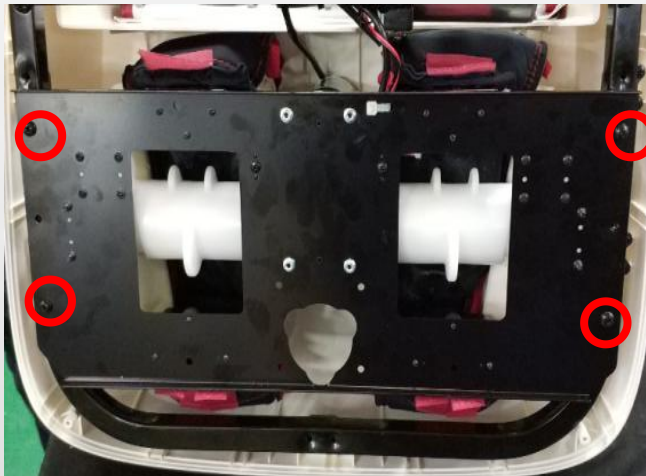
E. remove screws



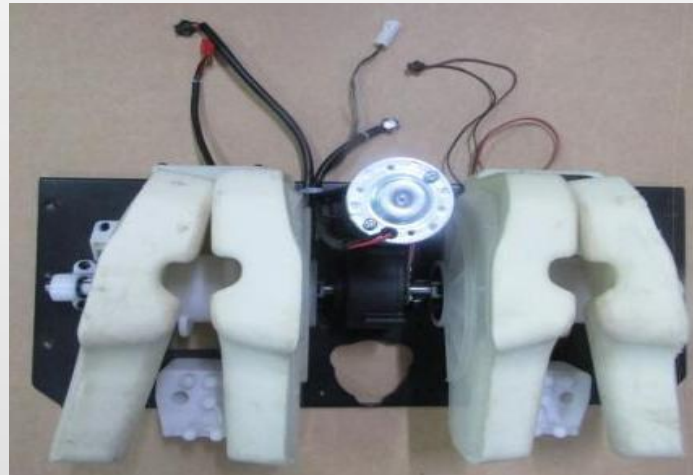
F. remove 5 screws



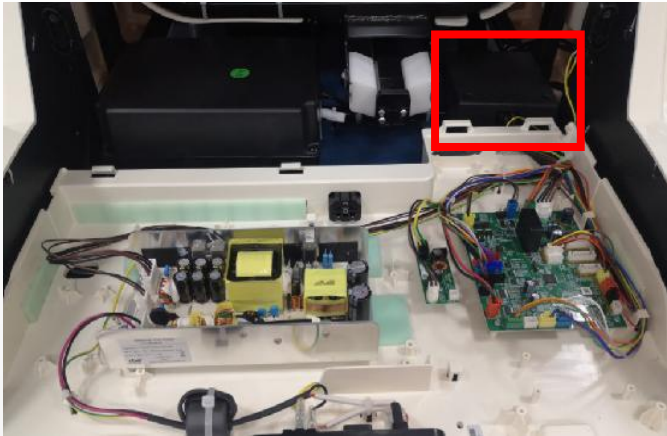
G. Cut off button,Unplug all terminals



H.remove 4 screws



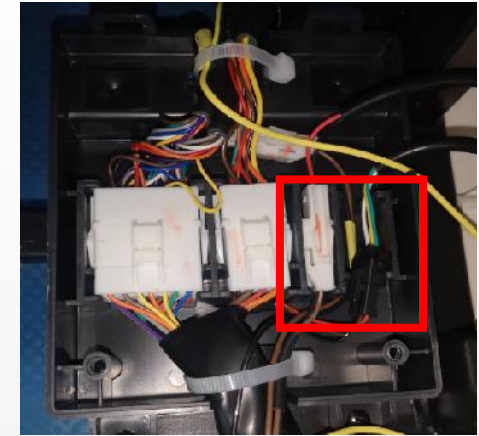
22、 disassembly of backrest actuator:



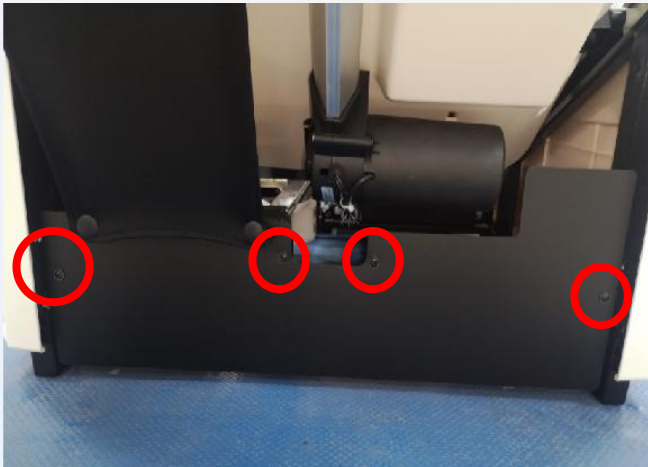
A.switch box



B.open the box



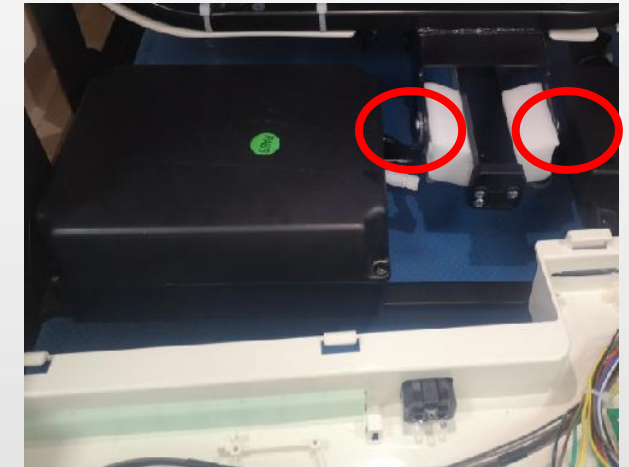
C.disconnect the terminals



D.remove 4 screws



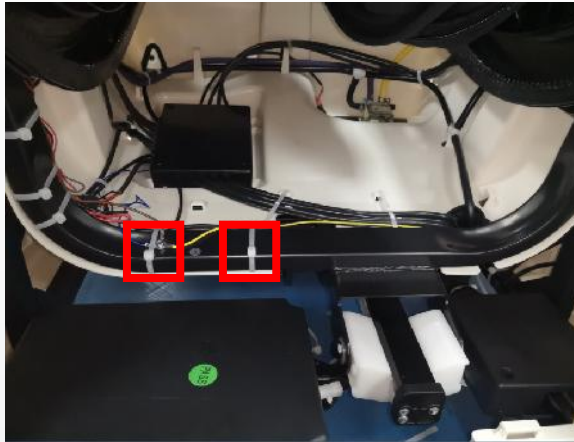
E.cut cable, remove the shaft



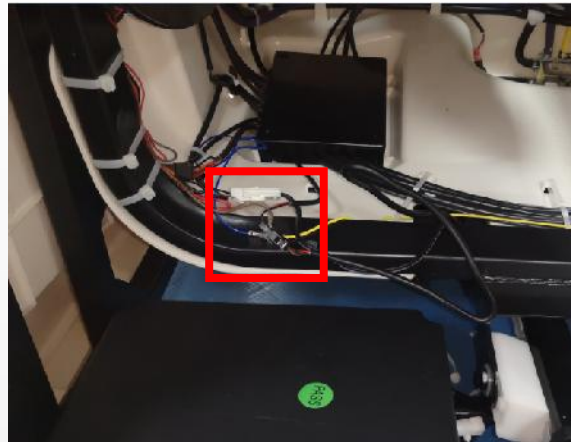
F.remove 2 screws

23、 disassembly of legrest actuator:

A. disassembly of rear cover (reference 9 disassembly of rear cover)



A.cut cable tie,disconnect the terminal



B. .Remove the blocking on both sides of the legrest



C. disconnect the terminal and air hose



D.remove 4 screws



E.take down the shaft,

五、Massage chair fault judgment

1、error code:

设置页面

长按此区域

在设置页面屏幕最下方长按数秒,将弹出工程模式密码输入页面

密码: **0592**
或 **0000**



No.	phenomenon	problem description	steps of shooting the trouble	remark
1	remote control tested any key pressed more than 40 seconds	1.one of the KEY has been blocked.	1.Detect remote control buttons	enter auto-check model
2	The communication between remote controller and the main PCB has exceeded 4S and has not been successful	1.remote controller wire do not connect well	1.replace remote controller wire	enter auto-check model
3	upper backrest signal is abnormality	1.The connector of the backrest wire is not well connected 2.Backrest wire Broken	1.check the connector of backrest wire 2.change the backrest wire	enter auto-check model
4	upper mechanism rolling signal is abnormality	1.The connector of the backrest wire is not well connected 2.rolling sensor broken	1.check the connector of backrest wire 2.rolling sensor broken	enter auto-check model
5	remote control tested any key pressed more than 40 seconds	1.one of the KEY has been blocked.	1.check remote control or side panel controller	enter auto-check model
6	leg rest tested more than 4 seconds	1.connector of leg rest wire not well 2.wire of leg rest broken	1.check the connector of leg rest wire 2.change the wire of leg rest	enter auto-check model

7	upper mechanism kneading signal is abnormality	1.width inspection board is broken 2.the wire connect to the width inspection board is disconnected	1.change width inspection board 2.change backrest wires.	enter auto-check model
8	upper mechanism more than 5 seconds did not tested the wide signal	1.width inspection board is broken 2.the wire connect to the width inspection board is disconnected 3.kneading motor is broken or kneading belt is lost	1.change width inspection board 2.change backrest wires. 3.change kneading motor	enter auto-check model
9	upper mechanism more than 5 seconds did not tested the centre signal	1.width inspection board is broken 2.the wire connect to the width inspection board is disconnected 3.kneading motor is broken or kneading belt is lost	1.change width inspection board 2.change backrest wires. 3.change kneading motor	enter auto-check model
10	upper mechanism more than 5 seconds did not tested the narrow signal	1.width inspection board is broken 2.the wire connect to the width inspection board is disconnected 3.kneading motor is broken or kneading belt is lost	1.change width inspection board 2.change backrest wires. 3.change kneading motor	enter auto-check model

11	No kneading reversing signal was detected at 10S on the upper movement	1.Main PCB is broken	1.change Main PCB.	enter auto-check model
12	The width signal was also detected after the upper movement kneading motor was turned off	1.Main PCB is broken	1.change Main PCB.	enter auto-check model
13	upper movement tested signals from up & down limit sensor at the same time.	1.upper&lower limit sensor is broken. 2.backrest wire or the terminals broken.	1.Change up & down limit sensor 2.check whether the backrest wire is well connected	enter auto-check model
14	upper movement more than 40s didn't tested the signal from the upper limit sensor	1.upper limit sensor is broken. 2.backrest wire is disconnected 3.rolling motor is broken or rolling motor wire disconnected	1.change upper limit sensor 2.check whether the backrest wire is well connected. 3.change rolling motor or rolling motor wire.	enter auto-check model
15	upper movement didn't tested the rolling counting signal	1.backrest wire is not well connected. 2.the counting sensor of the rolling motor is broken	1.check whether the backrest wire is well connected 2.change the counting sensor of the rolling motor	enter auto-check model

16	upper movement test the signal from upper limit sensor in 2 seconds test the lower limit sensor	1.lower limit sensor or upper limit sensor is broken.	1.change lower limit sensor or upper limit sensor 2.Check if the lower limit sensor or upper limit sensor wire is properly connected.	enter auto-check model
17	upper movement more than 40s didn't tested the signal from the lower limit sensor	1.lower limit sensor is broken. 2.backrest wire is disconnected 3.rolling motor is broken or rolling motor wire disconnected	1.change lower limit sensor 2.check whether the backrest wire(black) is well connected. 3.change rolling motor or rolling motor wire.	enter auto-check model
18	upper movement test the signal from lower limit sensor in 2 seconds test the upper limit sensor	1.upper limit sensor or lower limit sensor is broken.	1.change upper limit sensor or lower limit sensor 2.Check if the lower limit sensor or upper limit sensor wire is properly connected.	enter auto-check model
19	when start the leg rest actuator, there is no counting signal for more than 2.5 seconds (or 40 seconds did not test the actuator Reset signal)	1.leg rest actuator broken 2.leg rest actuator wire broken 3.Leg push rod count wire off	1.change leg rest actuator 2.check the wire of the leg rest actuator 3.check the leg push rod count line connection	enter auto-check model

20	The sensors on the front and back of the leg telescopic push rod are both high indicating that the sensors are abnormal or the terminals are off	<ol style="list-style-type: none"> 1. The expansion sensor is faulty or the cable connection is faulty 2. The telescopic motor is broken 	<ol style="list-style-type: none"> 1. Replace the sensor 2. Detecting sensor wires 3. Replace the telescopic motor 	enter auto-check model
21	The leg retractable pushrod 20S does not detect the front sensor signal	<ol style="list-style-type: none"> 1. The expansion sensor is faulty or the cable connection is faulty 2. The telescopic motor is broken 	<ol style="list-style-type: none"> 1. Replace the sensor 2. Detecting sensor wires 3. Replace the telescopic motor 	enter auto-check model
22	The rear end signal is detected within 2.5S after the front end signal is detected by the leg telescopic pushrod (the rear end sensor is broken)	<ol style="list-style-type: none"> 1. The expansion sensor is faulty or the cable connection is faulty 2. The telescopic motor is broken 	<ol style="list-style-type: none"> 1. Replace the sensor 2. Detecting sensor wires 3. Replace the telescopic motor 	enter auto-check model
23	The leg retractable pushrod 20S does not detect the rear sensor signal	<ol style="list-style-type: none"> 1. The expansion sensor is faulty or the cable connection is faulty 2. The telescopic motor is broken 	<ol style="list-style-type: none"> 1. Replace the sensor 2. Detecting sensor wires 3. Replace the telescopic motor 	enter auto-check model
24	The rear end signal was detected by the leg telescopic pushrod and the front end signal was detected within 2.5S (the rear end sensor was broken)	<ol style="list-style-type: none"> 1. The expansion sensor is faulty or the cable connection is faulty 2. The telescopic motor is broken 	<ol style="list-style-type: none"> 1. Replace the sensor 2. Detecting sensor wires 3. Replace the telescopic motor 	enter auto-check model

25	when start the backrest recline actuator, there is no counting signal for more than 2.5 seconds	<p>1.backrest recline actuator is broken</p> <p>2.backrest recline actuator wire is disconnected</p> <p>3.the signal wire of the backrest recline wire is disconnected</p>	<p>1.change backrest recline actuator</p> <p>2.check whether backrest recline actuator motor wire is well connected.</p> <p>3.check whether the signal wire of the backrest recline actuator is well connected</p>	enter auto-check model
27	upper movement tested signals from front&back limit sensor at the same time (3D)	<p>1.3D limit sensor broken</p> <p>2.3D limit sensor wire broken</p>	<p>1.change 3D limit sensor</p> <p>2.cheke whether 3D limit sensor wire connect well or not</p>	enter auto-check model
28	Side panel POWER button long press for more than 50 seconds	1.Button stuck	1.check POWER button	enter auto-check model
29	upper movement 3D counting signal is abnormity	<p>1.3D counting sensor is broken</p> <p>2.3D counting sensor wire connect not well</p>	<p>1.change 3D counting sensor</p> <p>2.check wether 3D counting sensor wire connect well</p>	enter auto-check model
30	After tested 3D limit sensor signal, then tested the other limit sensor signal in 2 seconds	1.3D limit sensor brken	1.change 3D limit sensor	enter auto-check model

31	3D limit sensor tester more than 10 seconds(3D)	<ul style="list-style-type: none"> 1.3D limit sensor broken 2.3D limit sensor wire broken 3.3D motor broken 4.The 3D light shield is loose 	<ul style="list-style-type: none"> 1.change 3D limit sensor 2.cheke whether 3D limit sensor wire connect well or not 3.change 3D motor 4.check wether the 3D light shield is loose 	enter auto-check model
33	Abnormal anti-collision signal (the movement on the anti-collision signal of the control board of the lower movement triggers more than 10S under the lower limit of the upper limit)	<ul style="list-style-type: none"> 1.Sensor abnormality 2.Abnormal wiring 	<ul style="list-style-type: none"> 1.replace the sensor 2.replace the wire 	enter auto-check model
34	The communication between the lower mechanism control board and the main PCB has exceeded 4S and has not been successful	<ul style="list-style-type: none"> 1.Poor contact between the back cable and the main PCB 2.lower mechanism docking line disconnection 	<ul style="list-style-type: none"> 1.check the terminalconnect well or not 2.replace the cable 	enter auto-check model
35	The upper and lower limit sensors of the lower mechanism are both effective	<ul style="list-style-type: none"> 1.replace upper and lower limit sensors of lower mechanism 2.backrest wire of lower mechanism do not connect well 	<ul style="list-style-type: none"> 1. Replace the upper and lower limit sensor under the movement 2. Check the signal cable connection of the back frame under the movement 	enter auto-check model

36	When the lower movement has the walk function turned on, an abnormal walk count was detected	<ol style="list-style-type: none"> 1. The signal on the back frame of the lower movement is in poor contact with the cable 2. The movement stroke counting sensor is broken 	<ol style="list-style-type: none"> 1. Lower the movement and check whether the signal pair of the back frame is inserted properly 2. The movement stroke counting sensor is broken 	enter auto-check model
37	The kneading motor rotation count signal was not detected in 5S of the lower movement	<ol style="list-style-type: none"> 1. The width detection board is broken 2. Connections to the width board are abnormal 3. Kneading motor broken or belt off 	<ol style="list-style-type: none"> 1. Replace the width detection board 2. Replace the signal cable for the back frame 3. Replace the motor 	enter auto-check model
38	The lower movement 5S clock does not detect the wide position signal	<ol style="list-style-type: none"> 1. The width detection board is broken 2. Connections to the width board are abnormal 3. Kneading motor broken or belt off 	<ol style="list-style-type: none"> 1. Replace the width detection board 2. Replace the signal cable for the back frame 3. Replace the motor 	enter auto-check model
39	The upper limit sensor signal was not detected in the lower movement 40S	<ol style="list-style-type: none"> 1. The upper limit sensor is faulty 2. The cable to the back frame falls off 3. The walking motor is broken or disconnected 	<ol style="list-style-type: none"> 1. Replace the upper limit sensor board 2. Check the signal cable connection of the back frame 3. Replace the walking motor or cable 	enter auto-check model

40	When the lower movement has the walking function turned on, an abnormal walk count was detected	<ol style="list-style-type: none"> 1. The back signal is in poor contact with the cable 2. The stroke count sensor is broken 	<ol style="list-style-type: none"> 1. Check whether the back frame signal pair cable is properly inserted 2. Stroke count sensor is broken 	enter auto-check model
41	The lower movement upper limit sensor detects the signal and detects the lower limit sensor signal within 2S	<ol style="list-style-type: none"> 1. The lower (upper) limit sensor is faulty 	<ol style="list-style-type: none"> 1. Replace the lower (upper) limit sensor plate 2. Check the lower (upper) limit sensor wire connection 	enter auto-check model
42	The lower limit sensor signal was not detected in the 40S of the lower movement	<ol style="list-style-type: none"> 1. The lower limit sensor is faulty 2. The cable to the back frame falls off 3. The walking motor is broken or disconnected 	<ol style="list-style-type: none"> 1. Replace the lower limit sensor board 2. Check the cable connections 3. Replace the faulty or connected walking motor 	enter auto-check model
43	After the lower limit sensor detects the signal, the upper limit sensor signal is detected within 2S	<ol style="list-style-type: none"> 1. The lower (upper) limit sensor is faulty 	<ol style="list-style-type: none"> 1. Replace the lower (upper) limit sensor plate 2. Check the lower (upper) limit sensor wire connection 	enter auto-check model

44	After inflating the lower mechanism for 15 seconds, no change in air pressure was detected, and the airbag failed to rise.	<ol style="list-style-type: none"> 1. Faulty valve 2. Faulty pressure sensor 3. Loose air hose 	<ol style="list-style-type: none"> 1. Maintain pressure valve 2. Modify the center plate 3. Inspect the connection of the air hose 	Perform the test when entering the self-diagnosis mode.
45	Upon detecting air leakage after holding the pressure for 15 seconds, it was determined that the pressure could not be maintained.	<ol style="list-style-type: none"> 1. The inflation valve and pressure-holding valve are connected incorrectly. 2. There is an issue with the wiring. 	<ol style="list-style-type: none"> 1. Inspect the connection to the airway 2. Inspect the wiring 	Perform the test when entering the self-diagnosis mode.



EC8507B错

误代码(1).xls