

产 品 维 修 手 册

Maintenance Service Manual

产品型号/Model: EI-8601B-TIT

适用电压规格/Voltage Specification: 120V

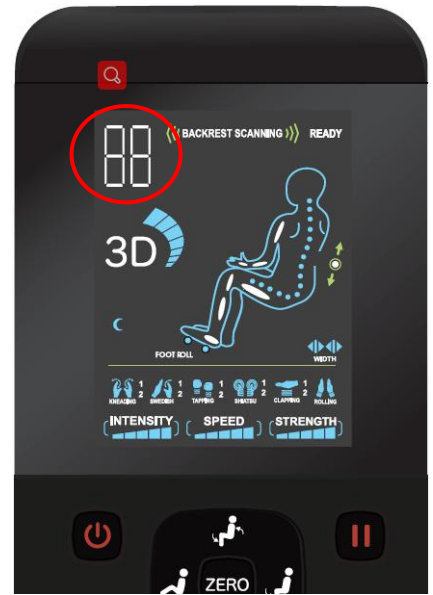
蒙发利集团·客服
By the Easepal's Customer Service Dept.

Table of Contents

1. Trouble List -----	3
2. Tools List -----	4
3. Replace the backrest pad -----	5
4. Replace the lint of backrest -----	6
5. Replace the subassembly of gear box-1-----	7
6. Replace the subassembly of gear box-2-----	8
7. Replace the subassembly of gear box-3-----	9
8. Take down the rear cover -----	10
9. Disassembly of the main PCB box -----	11
10. Disassembly of the side board-----	12
11. Disassembly of the leg-----	13
12. Replace the component wire for gear box backrest-1-----	14
13. Replace the component wire for gear box backrest-2-----	15
14. Replace the component wire for gear box backrest-3-----	16
15. Replace the air Pump -----	17
16. Replace the Main PCB、Transformer and Fuse -----	18

Trouble List

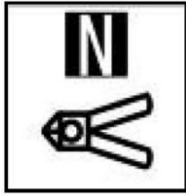
Trouble No.



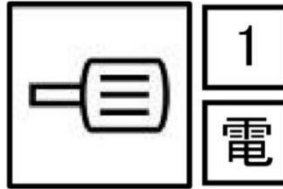
Common Troubles and Maintenance Methods are listed as below:

No	Description	Probable cause	Elimination Methods	Remark
1	Remote Control Keypad jammed	Remote Control Keypad jammed	1. Check if the key is stuck? 2. Replace a new Remote Control	
2	Remote Control and main PCB no communication for more than 4 seconds	Poor contact of wire or breakage	1. check or replace the wire 2. Replace a new Remote Control	
3	Gear box and main PCB no communication for more than 4 seconds	Poor contact of wire or breakage	1. check or replace the wire 2. Replace a new gear box	
40	The rolling motor of gear box sensor anomaly	The sensor is broken	1. Replace a new gear box 2. At the same time check whether the magnet on the guide rail is abnormal	1. Detection on Function Opening 2. Automatic shutdown in case of malfunction and no boot-up allowed.
41	The rolling motor of gear box coding anomaly	1. The sensor is broken 2. The rear box is overshoot	1. Replace a new gear box 2. At the same time check whether the magnet on the guide rail is abnormal	Same as above
42	The rolling motor of gear box coding anomaly speed sensor abnormality. Not detected for more than 6 seconds	1. The motor is broken or blocked. 2. Damage of Drive Circuit	1. Check the connection between motor and PCBA. 2. 2. Inspection or replacement of motor 3. Replace a new gear box.	Same as above
44	The kneading motor of gear box sensor anomaly. Not detected for more than 10 seconds	1. The sensor is broken 2. The motor is broken or blocked. 3. Damage of Drive Circuit	1. Check the connection between sensor and PCBA. 2. Inspection or replacement of sensor 3. Replace a new gear box	Same as above
46	The kneading motor of gear box sensor anomaly. Not detected for more than 6 seconds	1. The motor is broken or blocked. 2. Damage of Drive Circuit	1. Check the connection between motor and PCBA. 2. Inspection or replacement of motor 3. Replace a new gear box.	Same as above
49	Abnormal coding of telescopic gasbag for gear	The sensor is broken	1. Check the connection between sensor and PCBA. 2. Inspection or replacement of sensor 3. Replace a new gear box	Same as above
54	The kneading motor of gear box id-medium-narrow anomaly.	1. The sensor is broken 2. The motor is broken or blocked. 3. Damage of Drive Circuit	1. Check the connection between sensor and PCBA. 2. Inspection or replacement of motor 3. Replace the sense. 4. Replace a new gear box	Same as above
59	Actuator for backrest, counting sensor anomaly	1. Counting sensor is broken 2. Linear anomaly 3. The motor is broken or blocked. 4. Damage of Driving Circuit Devices	1. Check whether the connection between actuator and main PCB is loose 2. Replace a new actuator 3. Depot repair	Same as above
63	Actuator for leg rest, counting sensor anomaly	1. Counting sensor is broken 2. Linear anomaly 3. The motor is broken or blocked. 4. Damage of Driving Circuit Devices	1. Check whether the connection between actuator and main PCB is loose 2. Replace a new actuator 3. Depot repair	Same as above

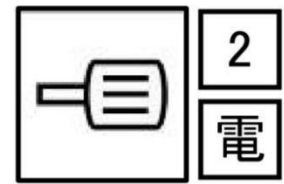
Tools List



Diagonal Cutter



Electric Screw Driver



Electric Screw Driver



Cable Ties



Cross Batch
2*6.35*65



Slot Type Screwdriver
2*6.35*100



Screwdriver

Replace the backrest pad

1. Unzip the zipper head with a cable ties (as shown in picture 1), a total of 7 (as shown in picture 2)

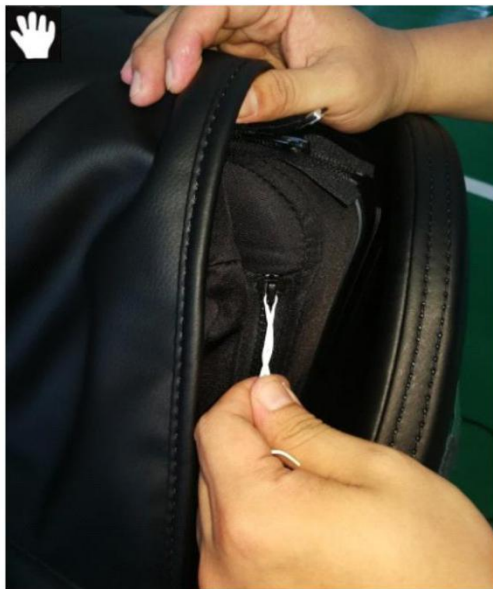


图1



图2

2. Replace the new backrest pad then zip up seven zippers as following picture



图3

Replace the lint of backrest

1. Please refer P9 first step to remove the backrest pad
2. Unzip the zipper of the lint of backrest, a total of 4 (as shown in picture 1)



图1



图2

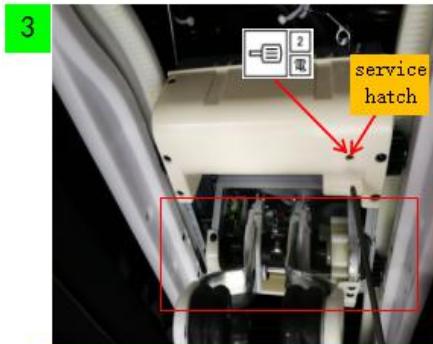
3. Remove the barb of backrest (four screws) (as shown in picture 1)
4. Replace it with a new lint refer to the above steps. Complete as shown in Figure 3.



图3

Replace the subassembly of gear box-1

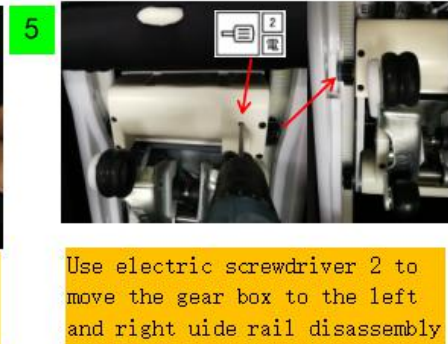
1. Please refer P9 first step to remove the backrest pad
2. Please refer P10 No.1-No.3 to remove the lint



The electric screwdriver 2 through the service hatch on the frame protective cover to rotate the worm and then move the gear box away from the guide rail disassembly baffle area. If the gear box does not block the guide rail disassembly baffle area, please jump directly to the next step.



Remove the baffle of the left and right guide rails with the electric screwdriver 1.



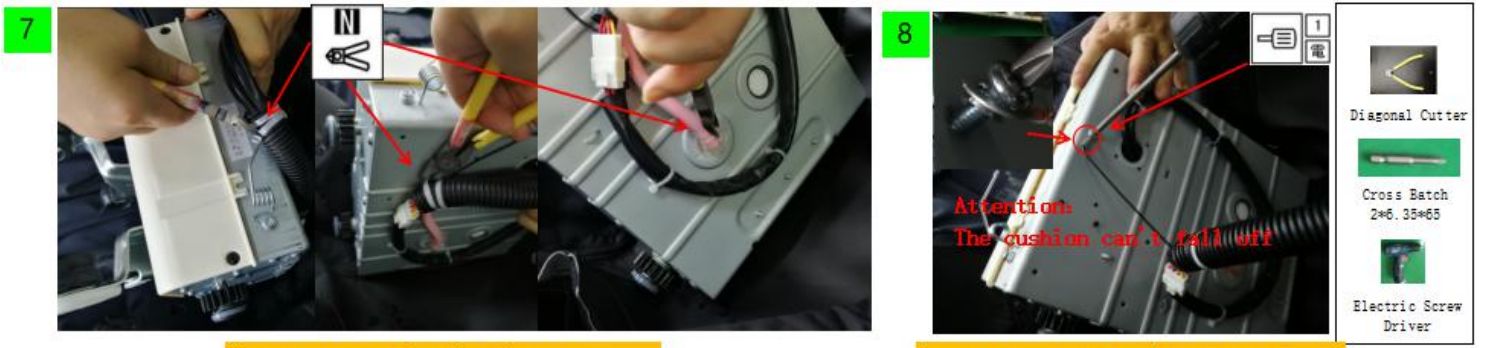
Use electric screwdriver 2 to move the gear box to the left and right uide rail disassembly baffle area.



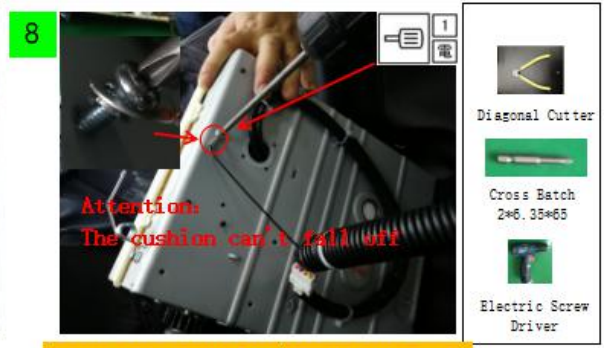
1. First the rolling wheel, then front wheel.
2. Take out from guide rail and place on the lint.

3. Move the gear box away from the disassembly baffle area.
4. Remove the disassembly baffle.
5. Move the gear box to make rolling wheel to the middle of the disassembly baffle
6. Take out the gear box.

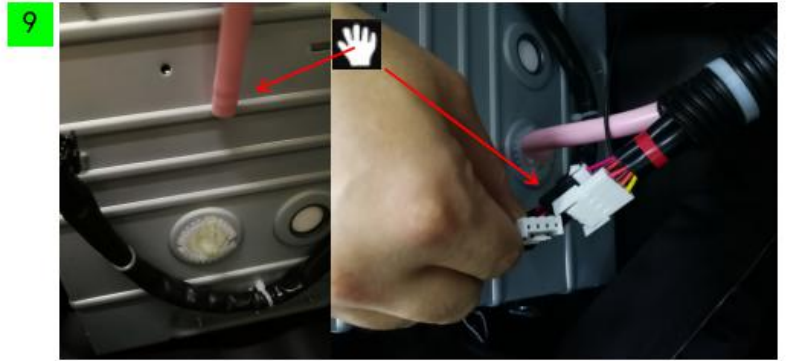
Replace the subassembly of gear box-2



Cut off the cable ties in three positions as shown in picture.



Remove the ground electrode of gear box with electric screwdriver 1



Pull out the outer wiring and trachea of the gear box and take away the gear box.

- 7. Cut off the outer wiring and trachea of the gear box.
- 8. Remove the ground wire screw of gear box.
- 9. Pull out the outer wiring and trachea of gear box.



Back line and trachea connect with external wiring air bag of gear box



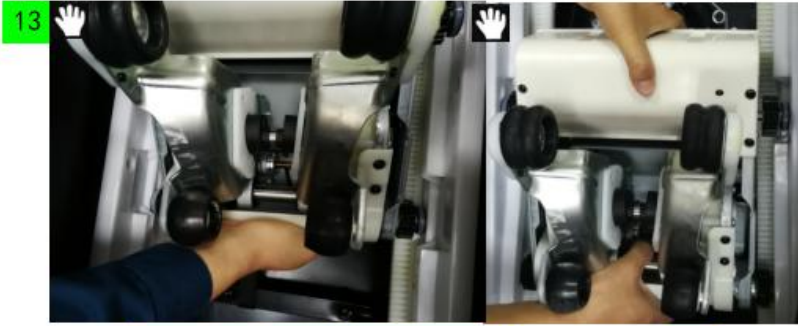
Lock the ground wire of gear box to the gear box with the electric screwdriver 1.

- 10. New gear box connect with back line and trachea
- 11. Lock the ground wire screw of gear box.
- 12. Cut the tail end of cable ties off.



The cable ties was tied to the back line and trachea, cut the tail end of cable ties off with diagonal cutter.

Replace the subassembly of gear box-3



13. First the front wheel, then rolling wheel, then put it in the service hatch of guide rail.



14. Remove gear box away from the baffle of the left and right guide rails with the electric screwdriver 2.



15. Move the baffle of the left and right to guide rails with the electric screwdriver 1.

- 16. Put the gear box in the guide rail.
- 17. Remove gear box away from the middle of baffle.
- 18. Put the baffle in the guide rail.



16. Pass the barb through the elastic cloth, lock two screws with screwdriver 1.



17. Zip up four zippers



- 13. Unzip the zipper.
- 14. Take down the barb.
- 15. Take down the lint.

Take down the rear cover

1. The massage chair runs to initial state and then cut off the power supply, as shown in picture 2.
2. Take down the cloth pin of rear cover, as shown in picture 3.
3. Take down the rear cover, as shown in picture 4-7.

Attention:

Please cut off the power supply before disassembling, and clean up the materials on the massage chair.



Disassembly of the main PCB box

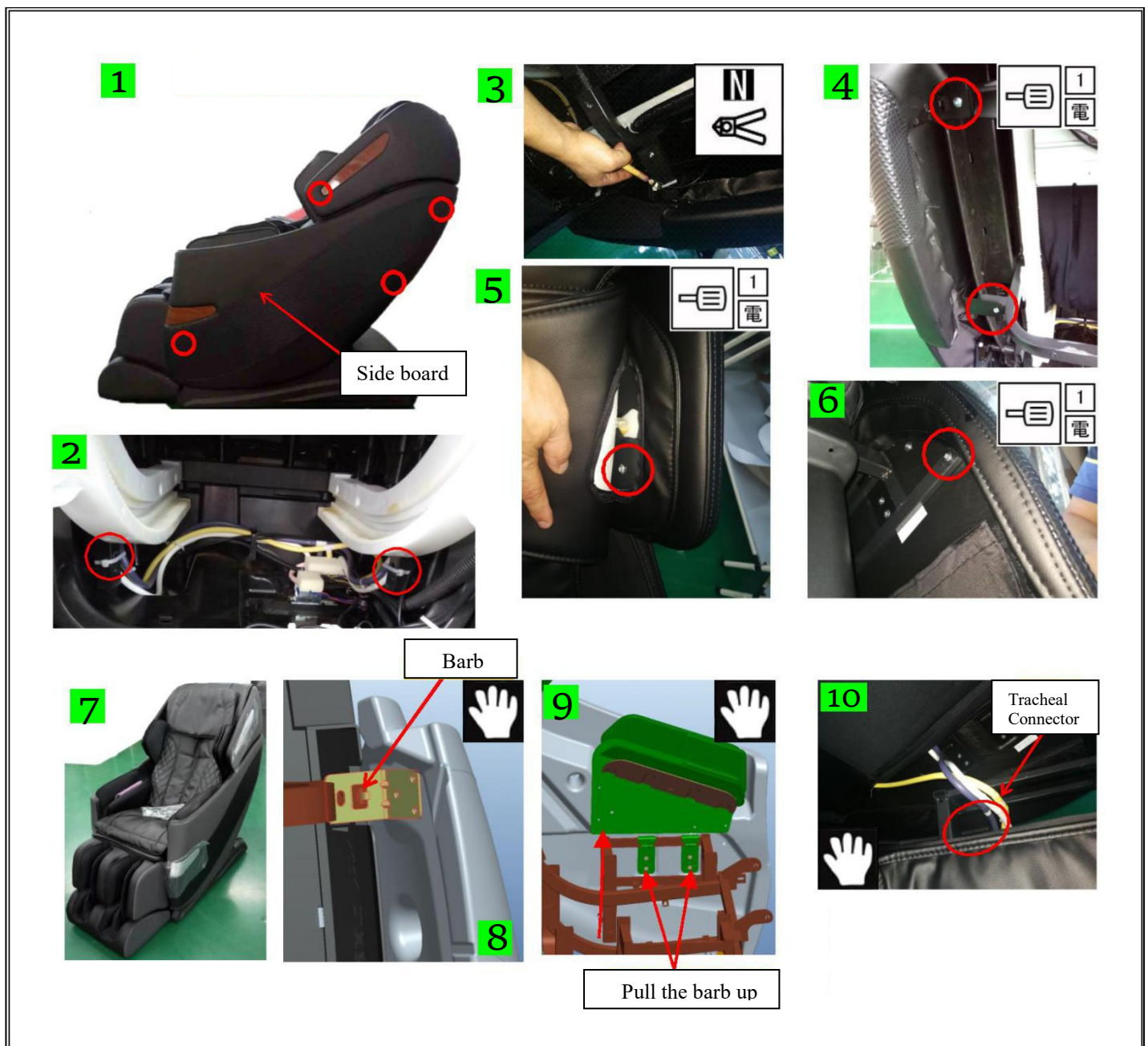
4. The massage chair runs to initial state and then cut off the power supply
5. Remove the cover of the main PCB box.



1. Remove 3 screws (M4*20)
2. Pull 5 cloth pins up in turn.
3. Remove the cover of the main PCB box, as shown in picture 5.

Disassembly of the side board

5. The massage chair runs to initial state and then cut off the power supply, as shown in picture 1.
6. Take down the rear cover.
7. Cut off the cable ties, as shown in picture 2.
8. Replace the right side board, need to cut off the cable ties of remote controller wire, and remove the remote control.
9. Remove 2 screws, as shown in picture 4.
10. Unzip shoulder airbag zipper, remove 1 screw, as shown in picture 5.
11. Connect the power to make the massage chair runs to backward state, remove a screw at the front of the side panel from leg below.



1. The massage chair runs to initial state again and then cut off the power supply, as shown in picture 7.
2. Lift the rear of the side plate up slightly, disengage side plate hook from backrest card slot, as shown 8.
3. Lift the front end of the side plate up above 20-30 mm, disengage side plate card slot from backrest, as shown 9.
4. Pull the three connecting pipes of the side plate out of the joint, as shown 10.

Disassembly of the leg

1. Unzip the zipper of leg, as shown in picture 1.
2. Open the DK card and exit upwards, as shown 2-4.
3. Lift leg up slightly and move right, separate the leg hanging pedestal from the fixed shaft, as shown 5.
4. Remove the leg from the trachea and power cord connector, as shown 5.

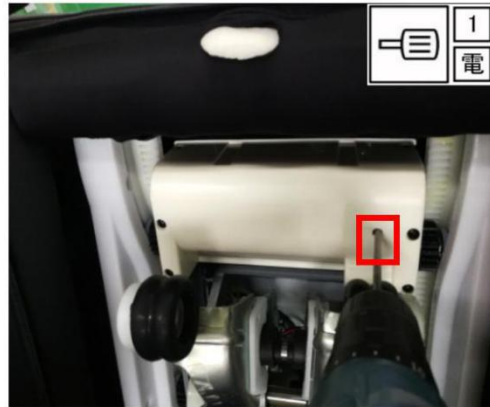
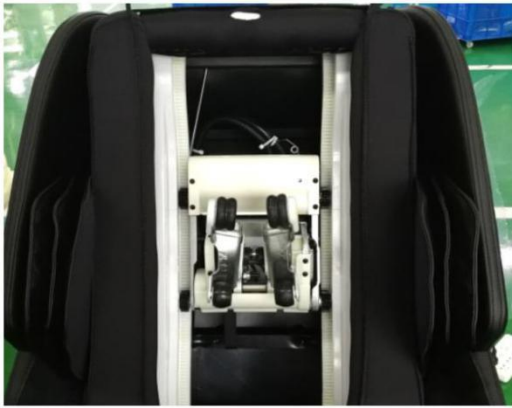


Attention:

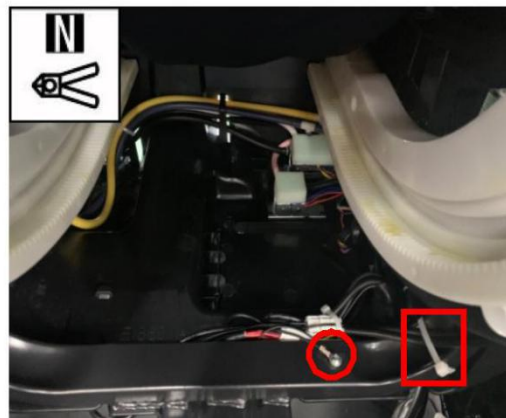
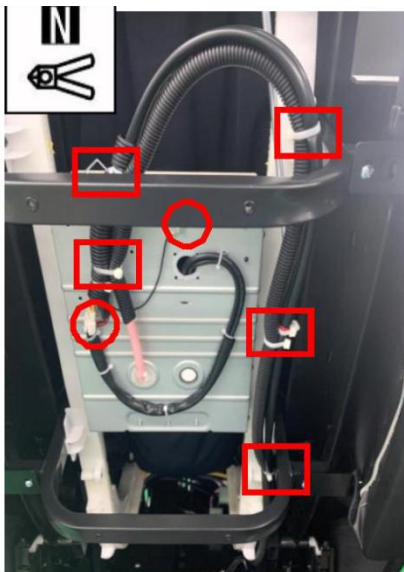
DK card is elastic card. Break the shrapnel apart with your finger and take it out, as shown 4.

Replace the component wire for gear box backrest-1

1. Refer the P13 to open the rear cover.
2. Adjust the position of gear box with screwdriver, and move to the middle of backrest.



3. Cut off all of cable ties as shown in the square frame, remove the terminal as shown in the circular frame and remove the grounding wire terminal.

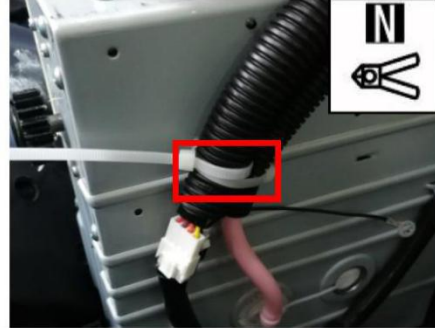
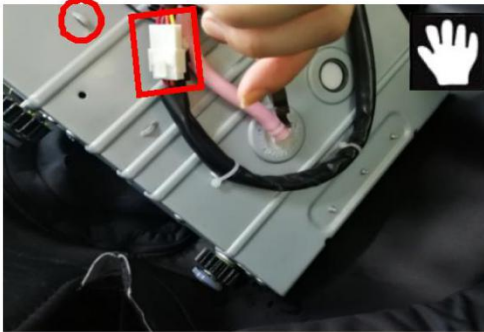


4. Pull out the terminals, then take down the component wire, as shown the following picture.

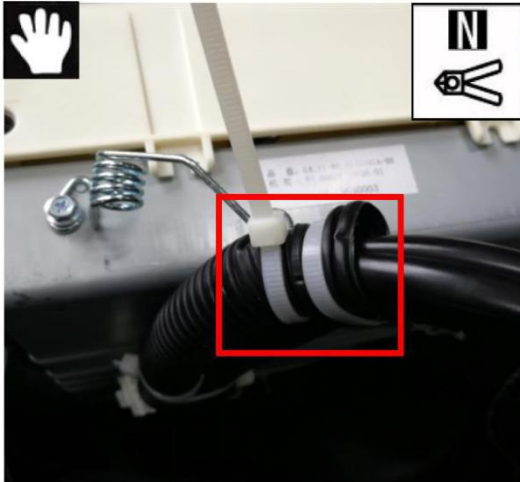


Replace the component wire for gear box backrest-2

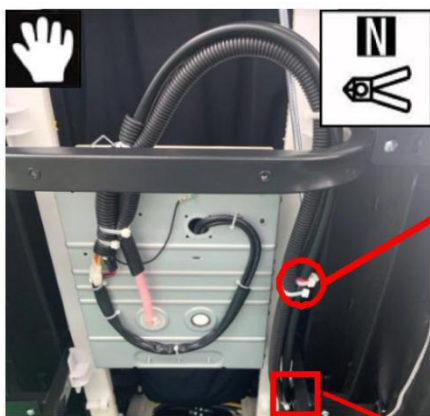
5. Two terminals docking as shown in the square frame, and the cable tie goes into the hole as shown in the circular frame and Pull the cable tie tight. cut the extra ends of the cable tie.



6. Tighten the cable tie at the spring, and pull the cable tie tight, cut the extra ends of the cable tie.

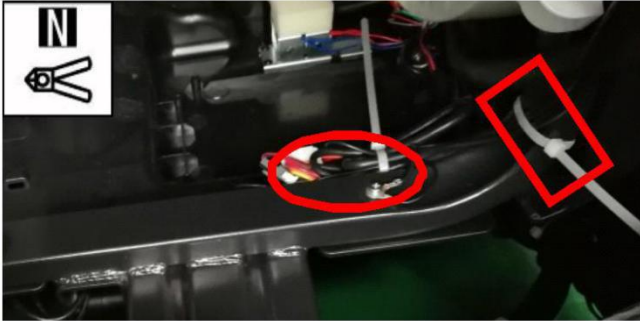


7. Pre-tie a cable tie first as shown in the square frame. Don't tie it up. Another cable tie passes through the spring (picture 2) pull to the cable tie as shown in picture 1, and tighten to picture 2.



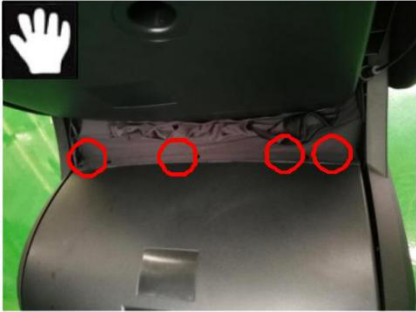
Replace the component wire for gear box backrest-3

8. Straighten the line first, then tie it in the iron pipe as shown in the square frame.
9. Pull the cable tie tight as shown in the circular frame.



Replace the air pump

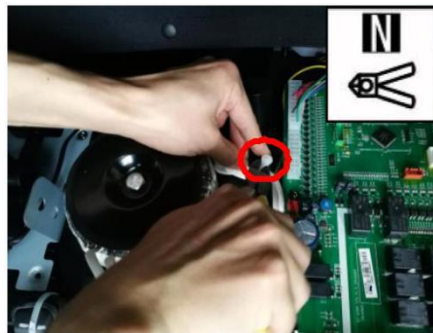
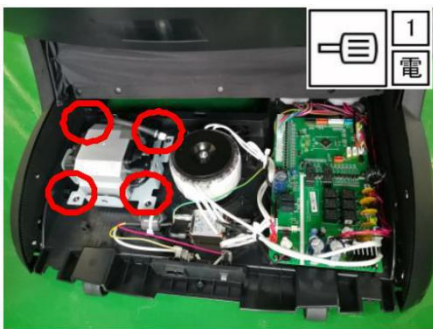
1. The massage chair runs to initial state and then cut off the power supply,
2. Remove the cloth pin of main PCB box.



3. Take down 3 screw of the main PCB box, then pull back the cover.

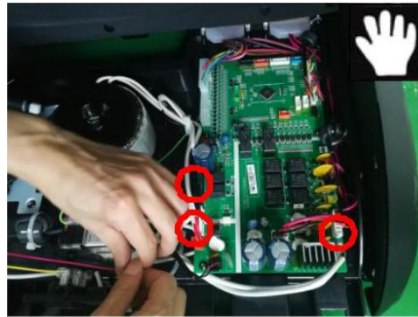


4. Take down the screw of air pump, cut off cable tie

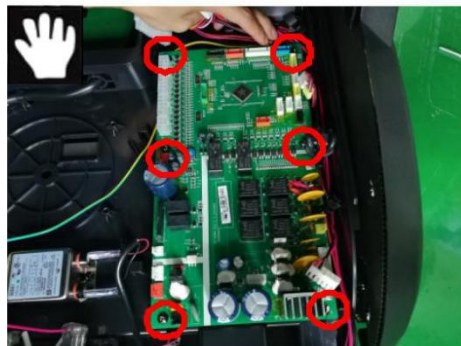
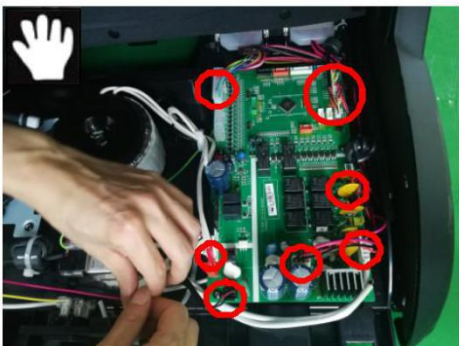


Replace the Main PCB、 transformer and fuse

5. Cut off the cable tie and pull out the terminals, and take down the screw of transformer, remove the transformer.



6. Pull out the terminals main PCB, take down 6 screw, then take up the main PCB



7. Remove the appliance inlet, take down the fuse, then replace the fuse.

