



EASEPAL

厦门蒙发利电子有限公司客户服务部

3300C massage chair service guide

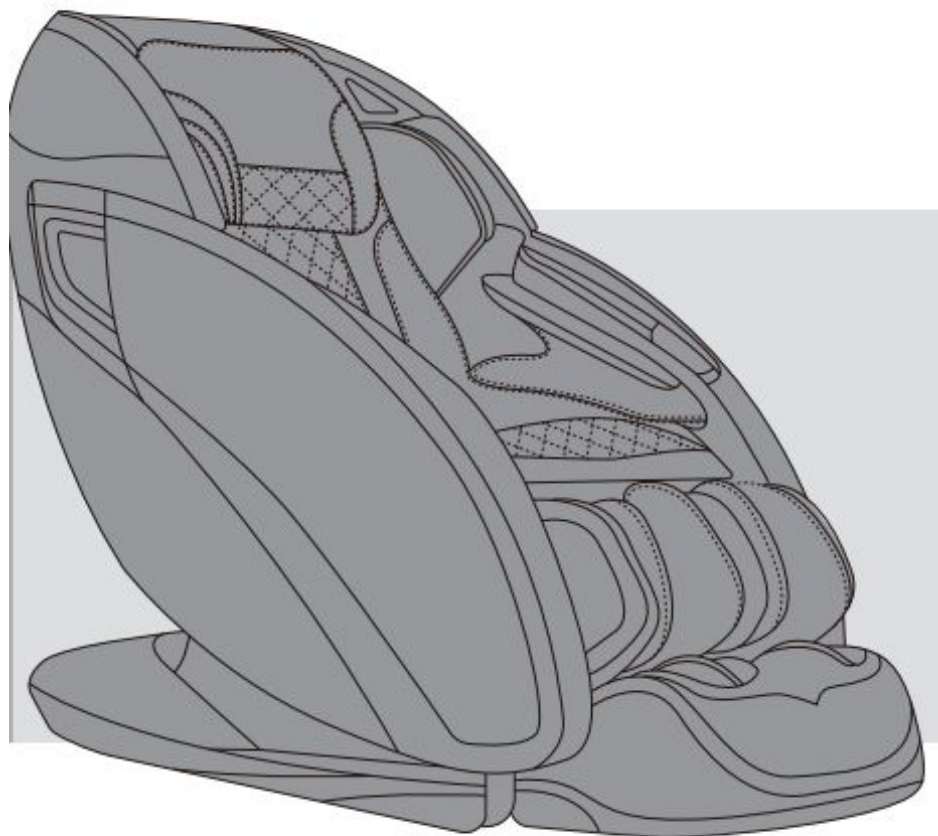


Table of Contents

- 一、 Product introduction
- 二、 Circuit working principle
- 三、 Massage chair removal instructions
- 四、 Massage chair fault judgment



EASEPAL

厦门蒙发利电子有限公司客户服务部

一、Product introduction

1、Product appearance size :



width
75CM

height
178CM

Length
118CM



一、Product introduction

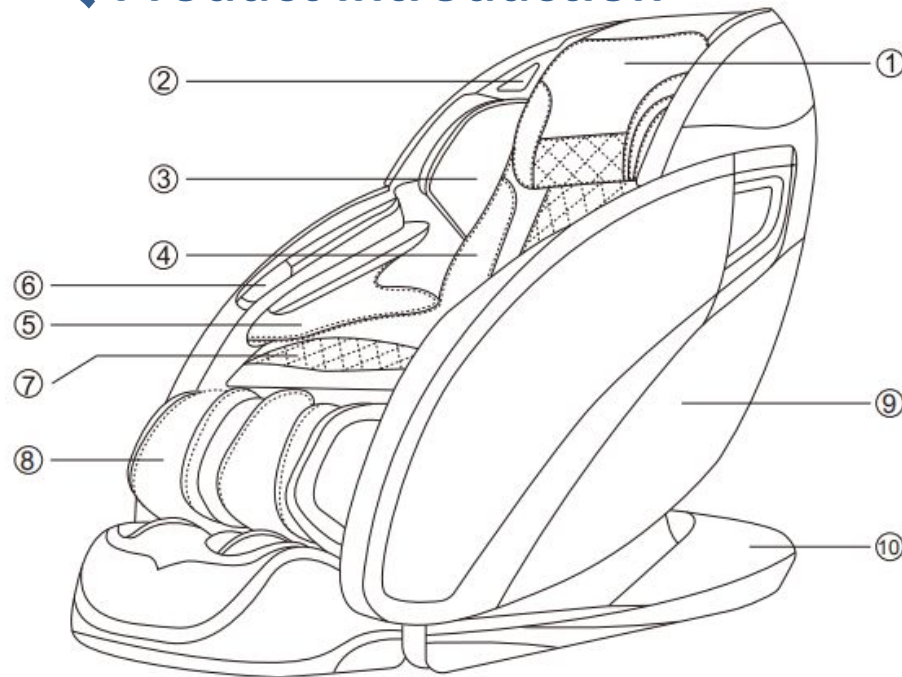
2、specifications of the products :

Description	Specifications
Model No.	OS-3D Otamic LE
Rated Voltage	110-120V~
Rated Frequency	60Hz
Rated Power Consumption	150W
Timer	5/10/15/20/30 minutes
Rated Time	15 minutes
Dimensions(L x W x H)	Upright: 62" x 29.5" x 46.5"
	Reclined: 67.7" x 29.5" x 34"
Weight	Gross Weight: Approx. 250.8 lbs
	Net Weight: Approx. 220 lbs
Length of Wire	Controller wire: 32"
	Power supply wire: 70.9"
Usage Condition	Environment temperature: 32°F~95°F
	Contrasting humidity: 20-80RH
Storage Condition	Storage temperature: 32°F~95°F
	Storage humidity: 20-80RH
Safety Feature	Equipped with overheated and power
Maximum body weight of user	264 lbs



3、Appearance of the whole machine:

一、Product introduction



- | | |
|---------------------------------|----------------------|
| ① Pillow Pad | ② Bluetooth Speaker |
| ③ Shoulder side massage section | ④ Backrest Pad |
| ⑤ Hand and arm massage section | ⑥ Armrest Controller |
| ⑦ Seat | ⑧ Legrest |
| ⑨ Side Panel | ⑩ Power Box |

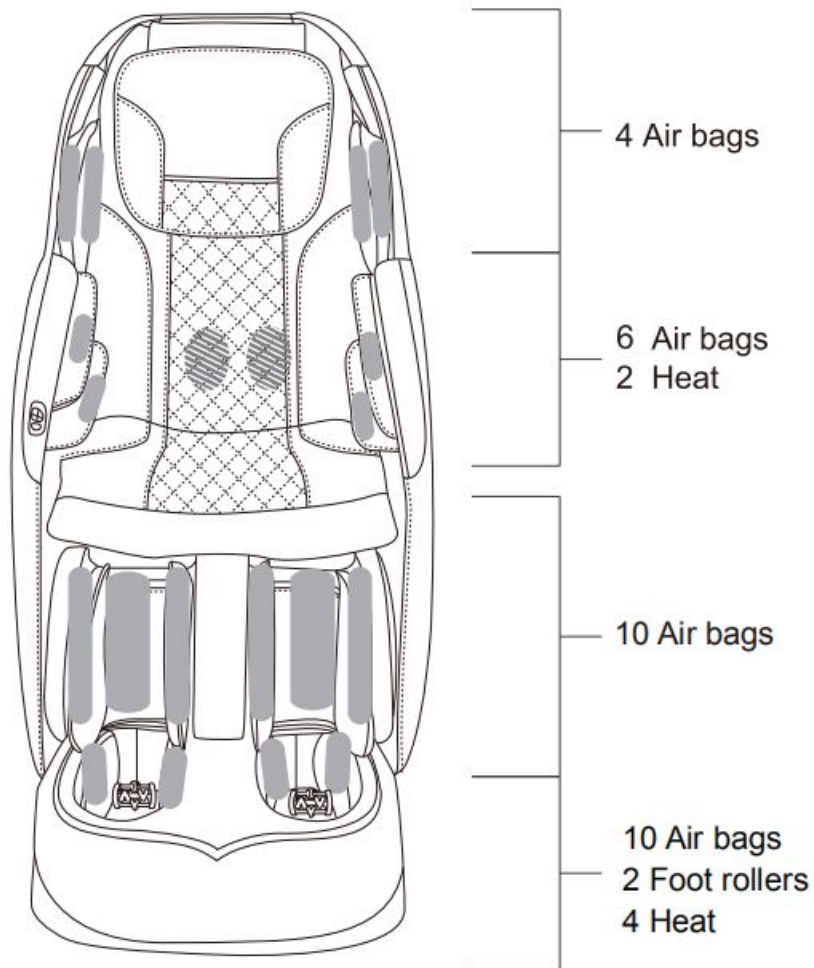


EASEPAL

厦门蒙发利电子有限公司客户服务部

4、air massage area

一、Product introduction



 Air bag

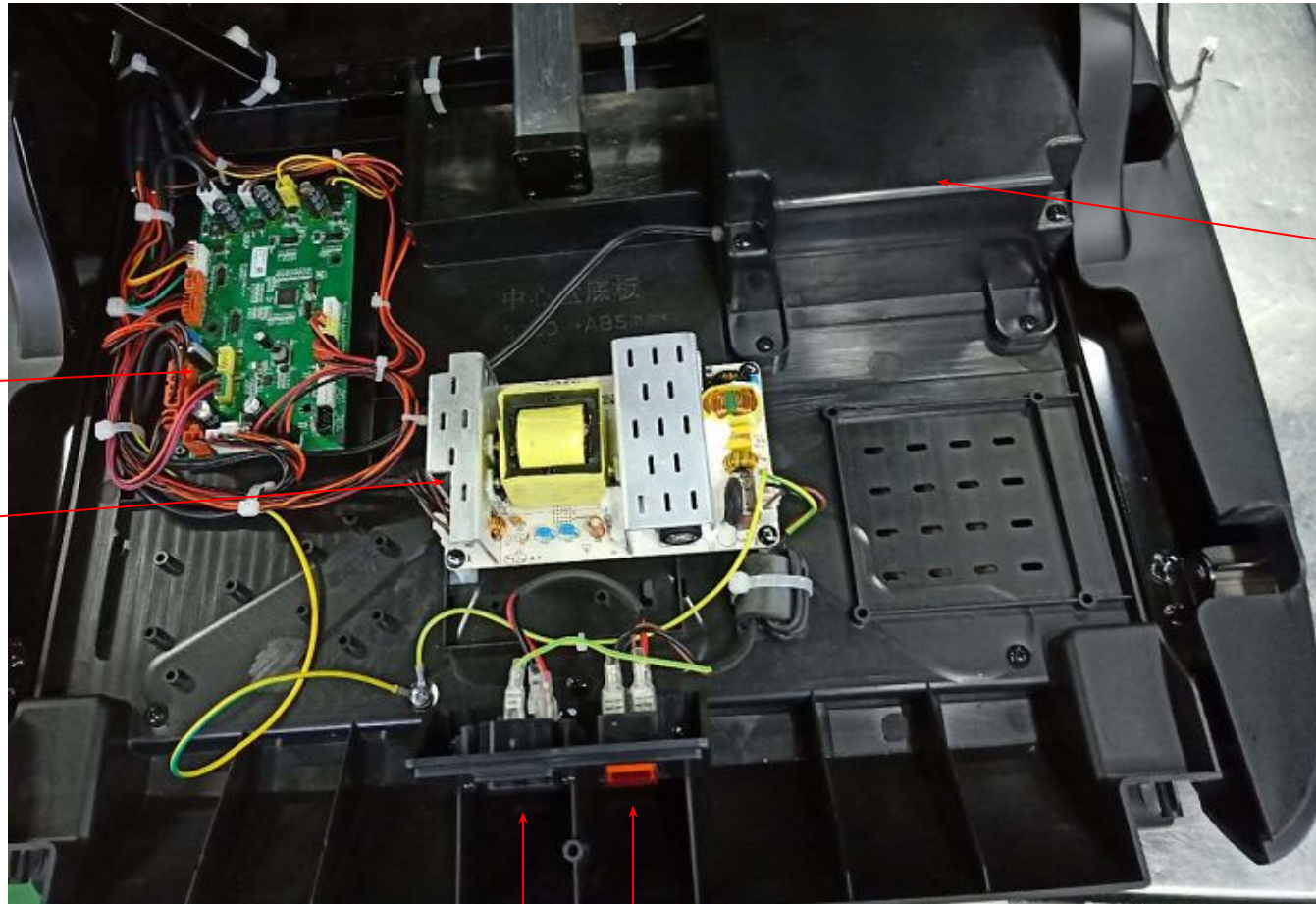
 Heat

 Foot Roller



二、Circuit working principle

1、Component description for main PCB box



main PCB

power PCB

air pump

Use a slotted screwdriver to tilt out fuse box, spare fuse

power switch

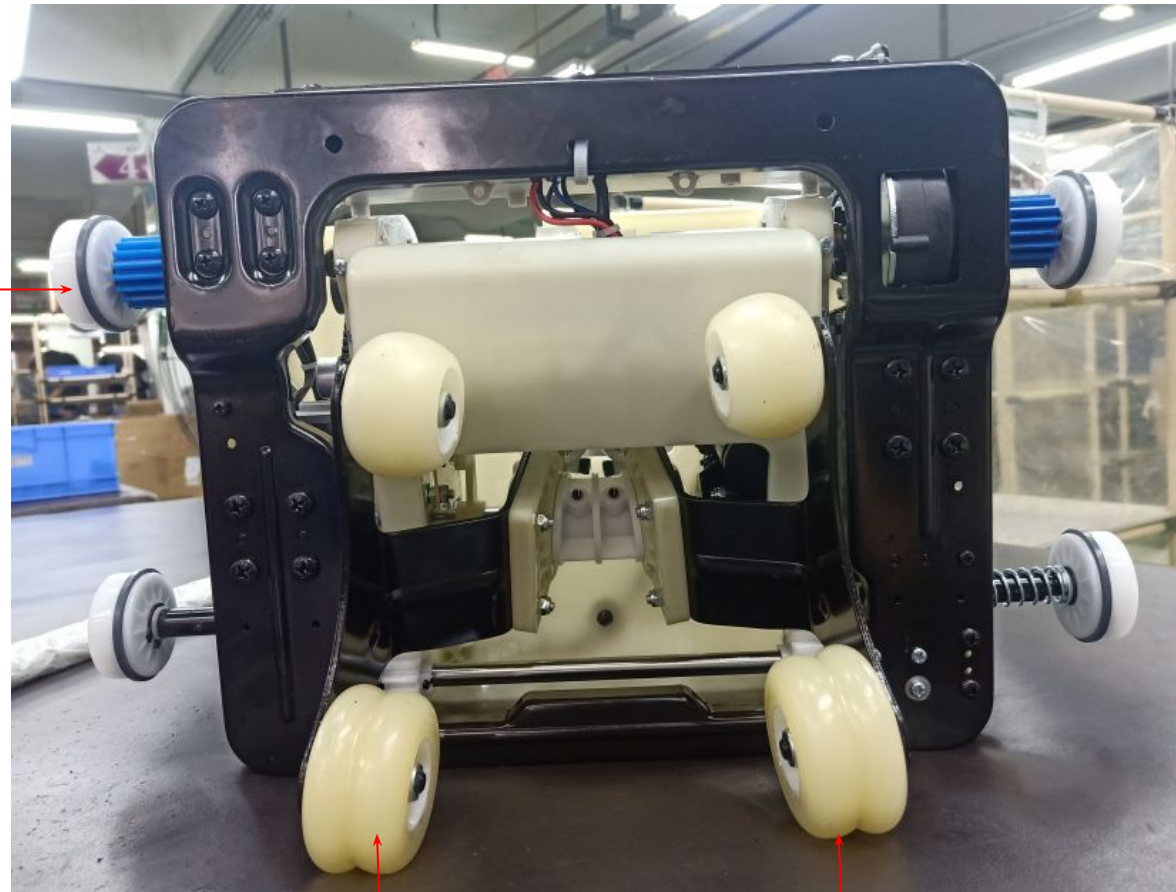


EASEPAL

厦门蒙发利电子有限公司客户服务部

二、Circuit working principle

2、3D mechanism graphic



rolling wheel

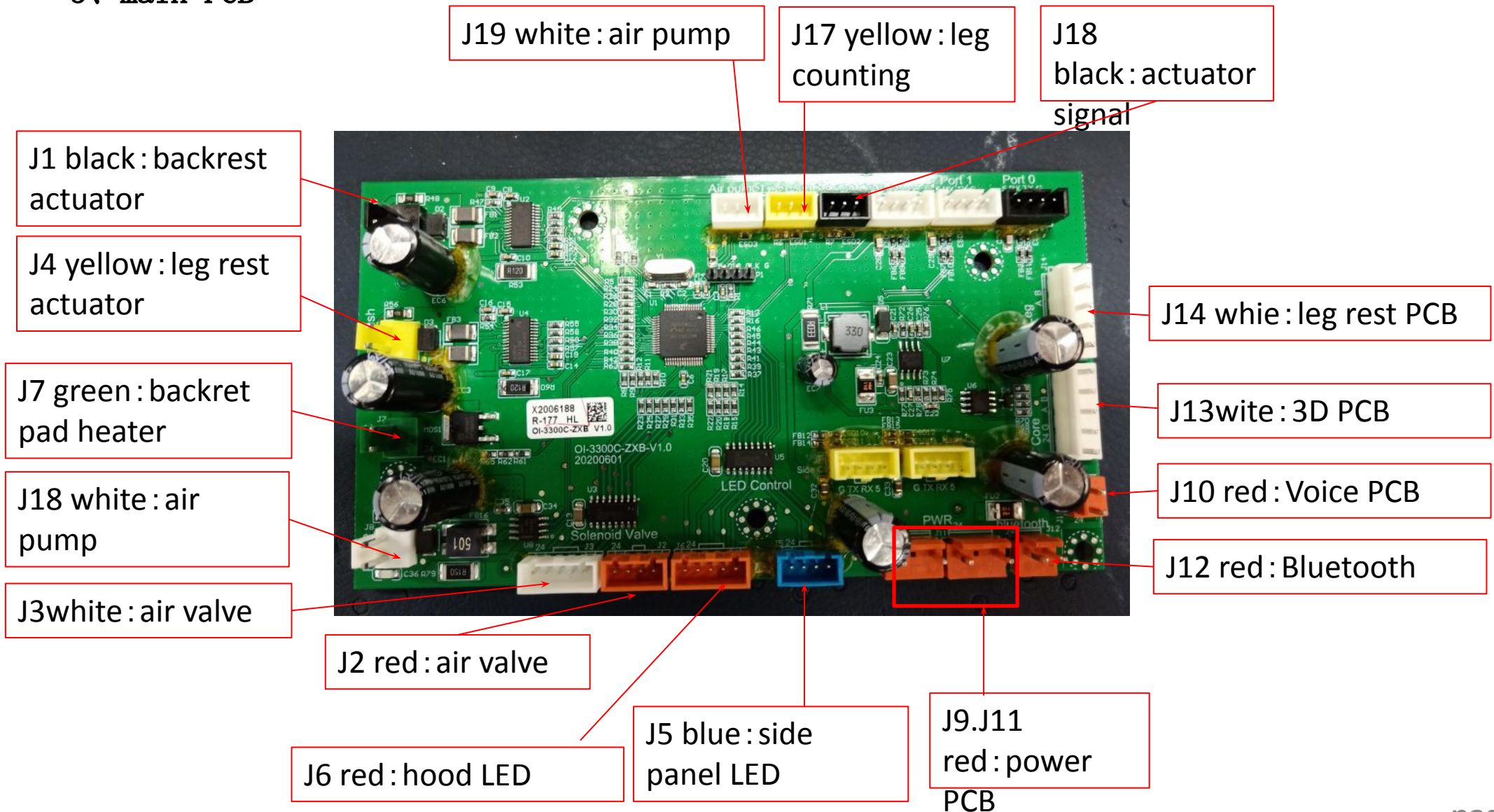
massagearm
(right)

massagearm
(left)



二、Circuit working principle

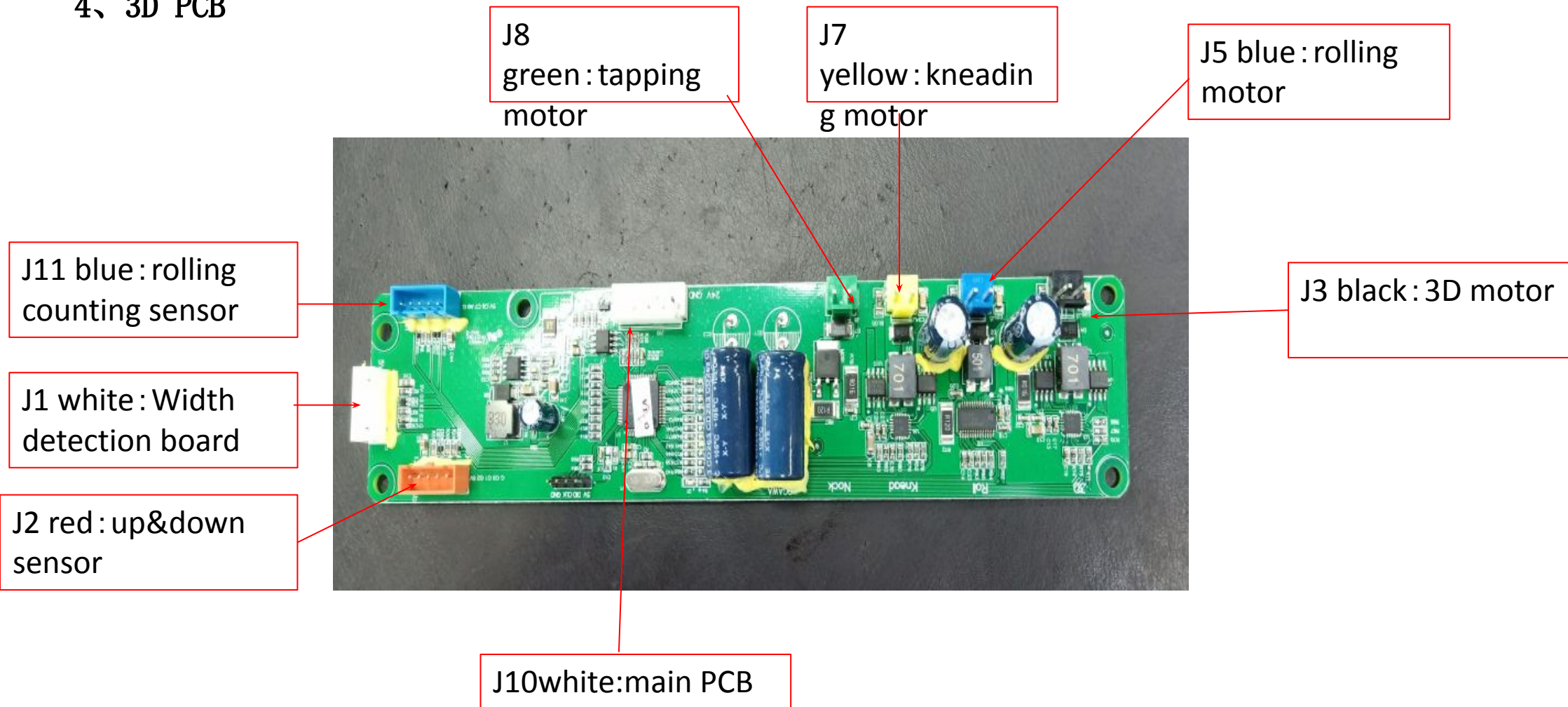
3、main PCB





二、Circuit working principle

4、3D PCB





二、Circuit working principle

5、leg rest PCB

J12 red : counting sensors of stretch out and draw back



J12 white : main PCB

J1 white : air valves

J3 white : air valves

J5 white : heater

J7 black : countin senor of lower leg rest actuator

J13 white : foot touch sensor

J2 black : lower leg rest motor

J4 green : foot massag

J6 yellow : calf massage



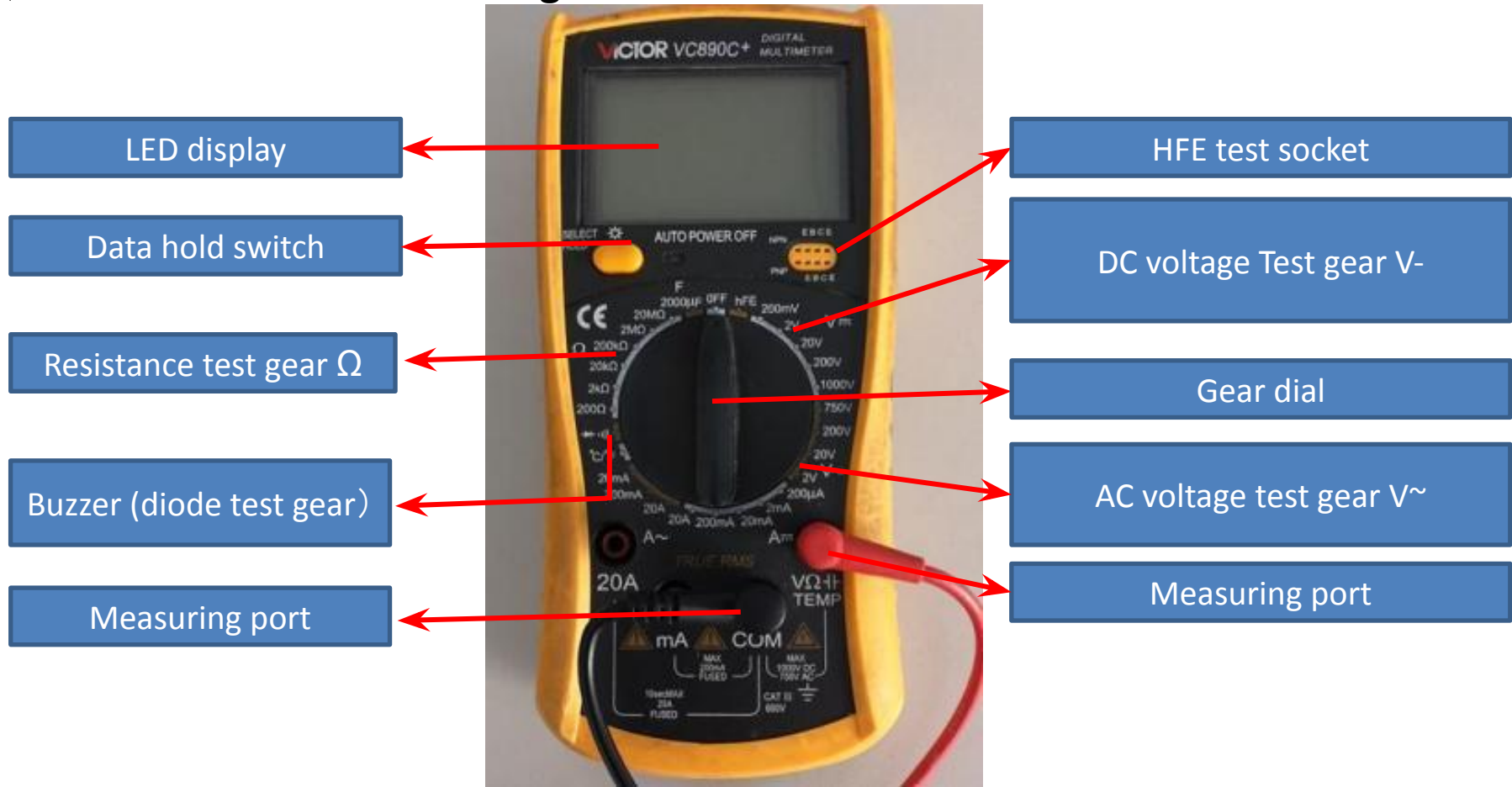
三、Massage chair removal instructions

1.tools

					
Screwdriver size 1,2,3	Diagonal cutter and long nose	Soldering Kit	Spanner tools Kit	Test pen	Allen Key set
					
Ratchet Tools Set	24V/DC power	Electric Driver	electrical adhesive tape	Cable Ties	WIRE ONECTORS

三、Massage chair removal instructions

2、Use and measurement of digital multimeter



三、Massage chair removal instructions

2.1、Function of the test gears

Data hold switch : Memorize the measured data for comparison。

Buzzer (diode test gear) : Measure the quality of diode, the on-off and alarm function of circuit

Resistance gear test gear : Measure the quality and value of resistance

DC voltage Test gear V- : Measure DC voltage

AC voltage test gear V~ : Measure AC voltage

VΩ / COM : VΩ Red pen port (+ pole) during test, black pen port (- pole) during com test

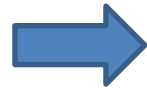
Note: when carrying out resistance or voltage test, it is necessary to select a suitable range. If the range is too small to be measured, and the range is too large, the test error range is large; if the voltage is not known, it is necessary to select a range measurement with a large windlass.

三、Massage chair removal instructions

2.2、On / off measurement of lines



open circuit



As shown in the left picture, first set the multimeter to the buzzer and power it
When the switch is on, the multimeter will display "0."; then contact the two probes with the ends of the red wire
At this time, the multimeter still shows "1." there is no change, which means there is an open circuit in the middle of the wire, that is, the line is open.



close
circuit



As shown in the picture on the left, if the multimeter shows the number of ". 002" or ". 00n" and gives an alarm, it means that the wire is connected.

三、Massage chair removal instructions

2.3、Measurement of AC voltage



As shown in the picture above: measure the household plug-in board power supply (220V), select the range of 750, and the test result shows "224", indicating that the actual voltage of this group of sockets is 224v at the moment (the switch is pressed down, so there is power, and the light is on).



As shown in the above picture: measure the power supply (220V) of our household plug-in board, select the range of 750, and the test result is displayed as "001", indicating that the actual voltage of this group of sockets is 0V at the moment (the switch is not pressed down, so there is no power, and the light is not on).

三、Massage chair removal instructions

2.4、DC voltage measurement



As shown in the picture above: the test result is "1.58", indicating that the voltage at both ends of the battery is 1.58v, and the red lead is connected to the "+" pole of the battery, and the black lead is connected to the "-" pole of the electromagnetic.



As shown in the above picture: the test result is "- 1.58", indicating that the voltage at both ends of the battery is 1.58v, and the red lead is connected to the "-" pole of the battery, and the black lead is connected to the "+" pole of the electromagnetic



三、Massage chair removal instructions

3.1、disassembly of the pillow



unzip the zipper



backrest pillow



take down small pillow



small pillow



三、Massage chair removal instructions

3.2、disassembly of the backrest pad



unzip the zipper



unzip the zipper



unzip the zipper



unzip the zipper both side



discontent the heater terminal



take down backrest pad

三、Massage chair removal instructions

3.3、disassembly of remote control



discontent the terminal



take down the remote control



三、Massage chair removal instructions

3.4、disassembly of the side panel controller and the pocket



Find the location of the side panel controller slot



separate the controller



discontent 2 terminals



side panel control



take down the pocket



remote control pocket

三、Massage chair removal instructions

3.5、disassembly of the cover of the backrest and hood



remove 4 screws



open the cover



take down the cover



open the hood cover



take down the left cover



open the other cover

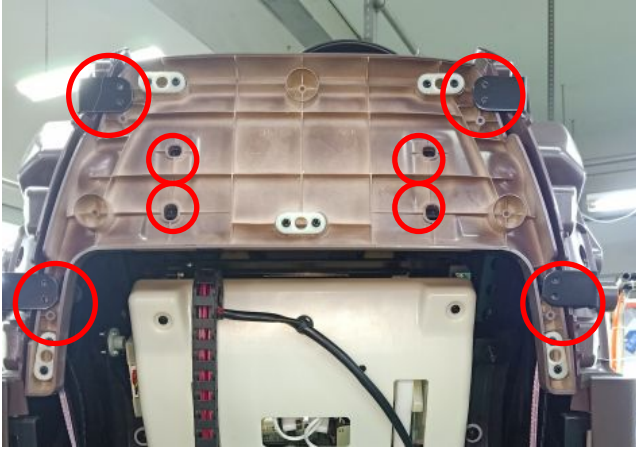


take down the right cover

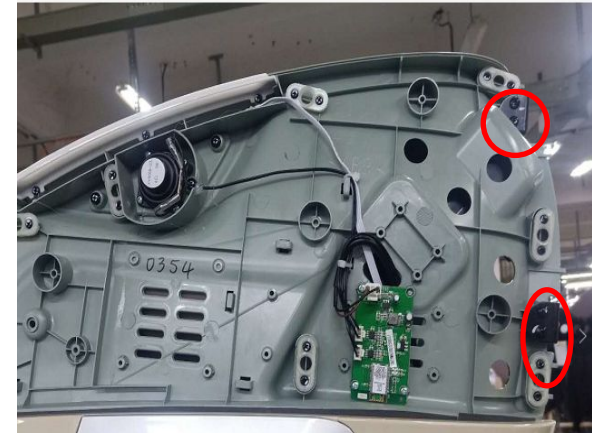


三、Massage chair removal instructions

3.6、disassembly of the inner hood



Remove 8 screws with cross screwdriver
Remove 4 screws with a hex wrench



Remove the four screws on the left side of the hood



Remove the 4 screws on the right



the inner hood had been taken down



三、Massage chair removal instructions

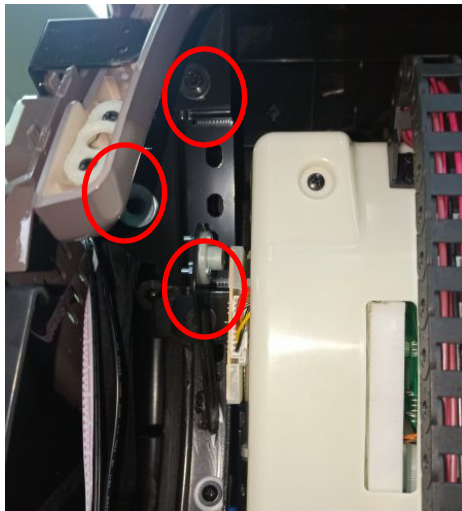
3.7、disassembly of mechanism



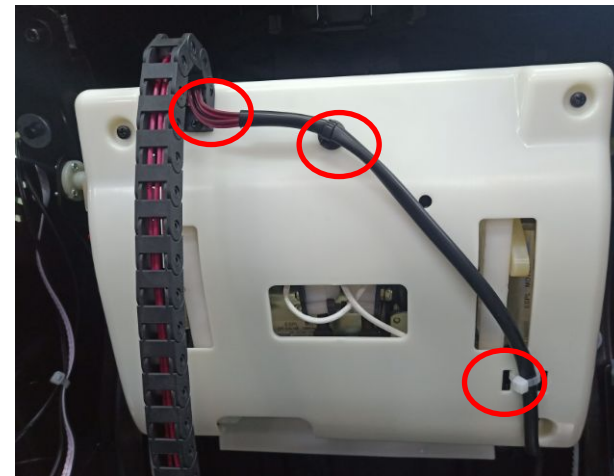
remove 4 screws, cut the cable tie



find out the blue terminal, let mechanism go down with 24VDC power



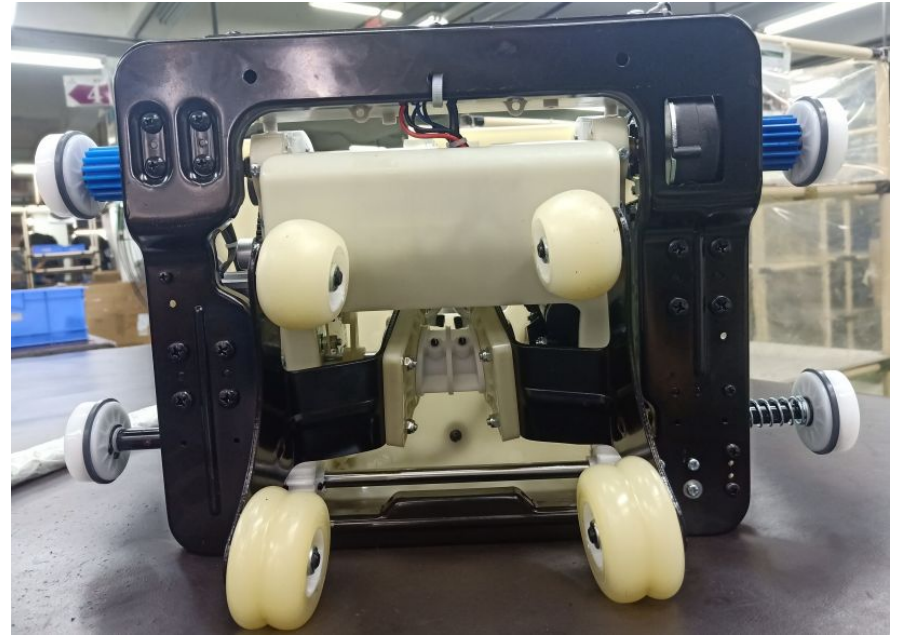
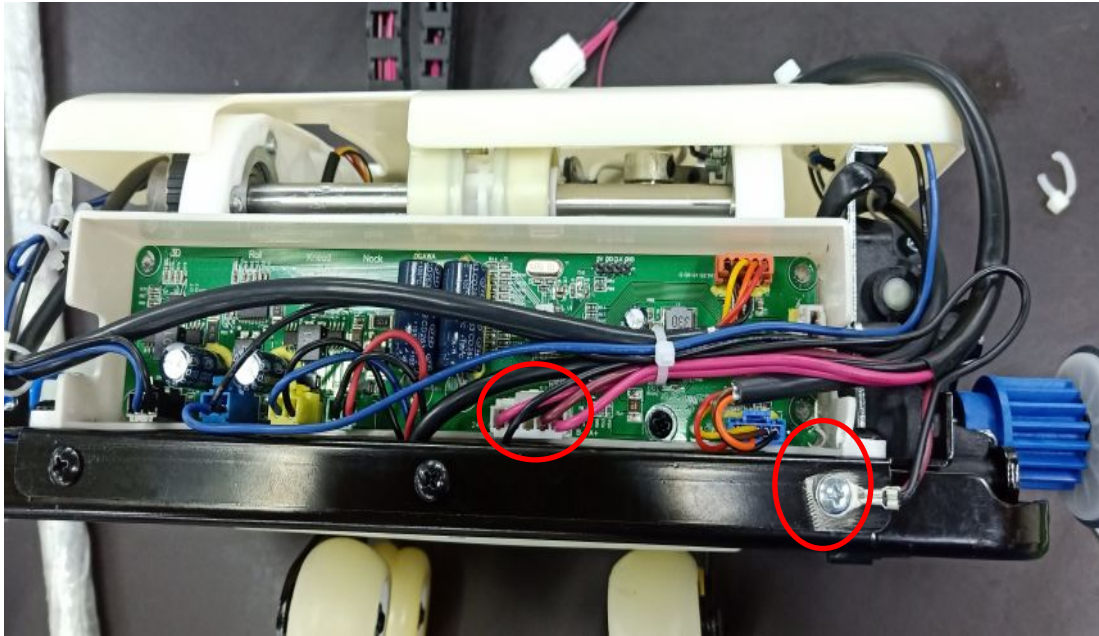
remove 6 screws, remove the iron



remove 2 screws, cut the cable tie



三、Massage chair removal instructions



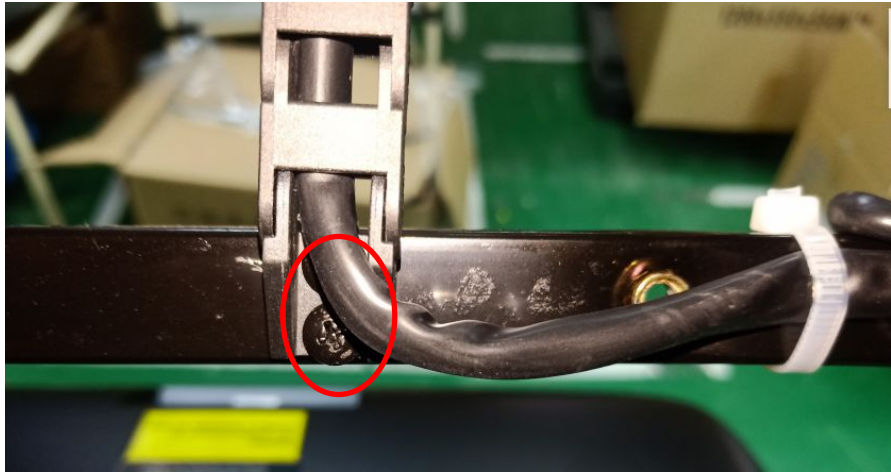
disconnect the white terminal, remove the screw, separate the backrest wire, let mechanism go up with 24V/DC power

mechanism

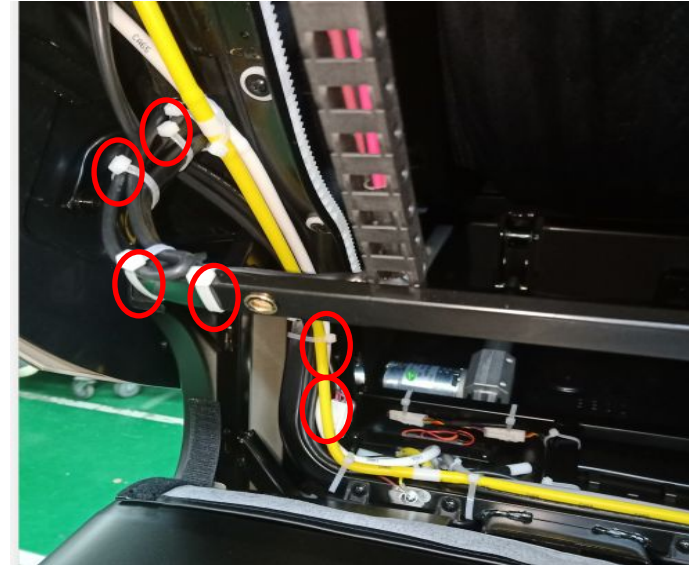


三、Massage chair removal instructions

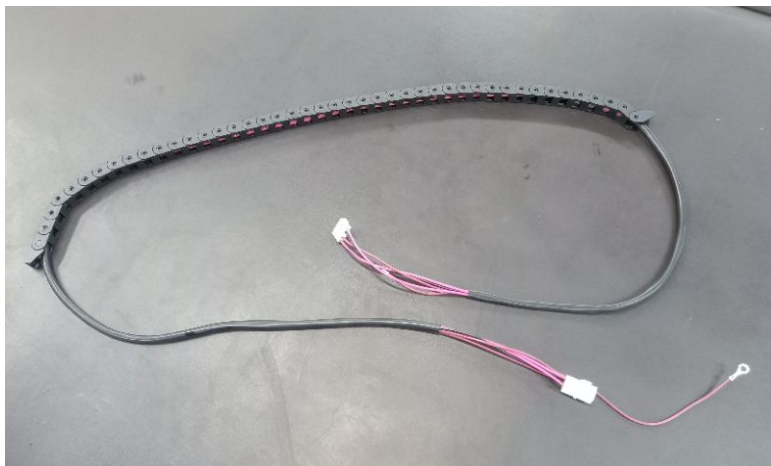
3.8、disassembly of the backrest wire



remove 2 screws



cut 5 cable tie, discontent the terminals



backrest wire



三、Massage chair removal instructions

3.9、disassembly of the side panel



remove 4 screws of the backrest



open the rear cover



open the cover



left cover



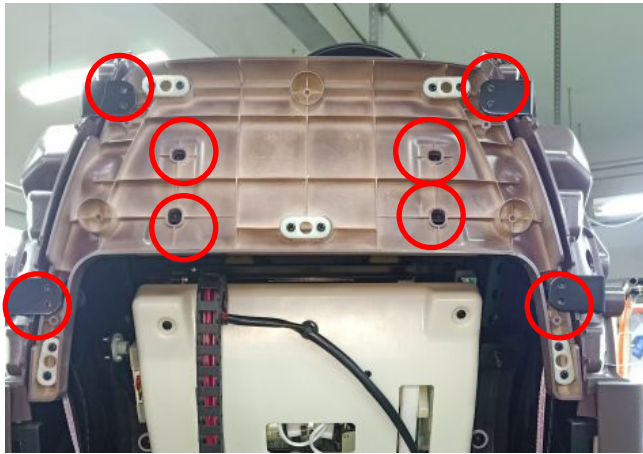
open the cover



right cover



三、Massage chair removal instructions



remove 12 screws



remove 4 screws left side



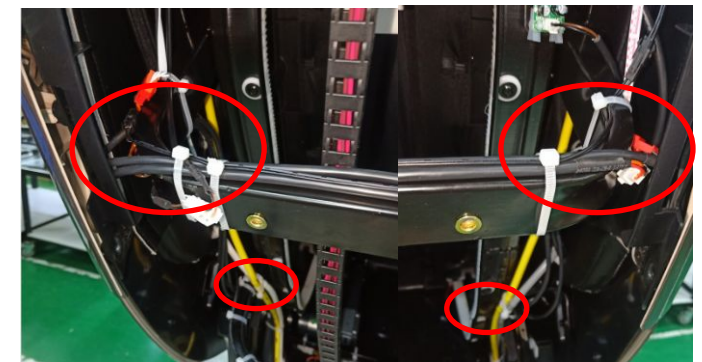
remove 4 screws right side



take down the inner hood



remove 2 screws



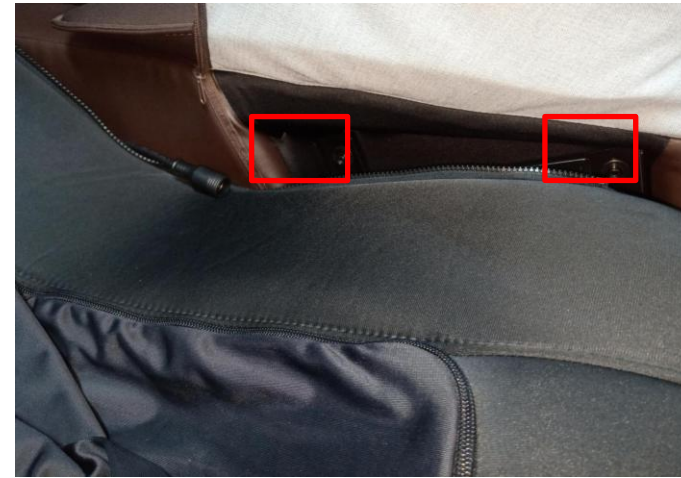
cut cable, disconnect the terminals, discontent the air hose



三、Massage chair removal instructions



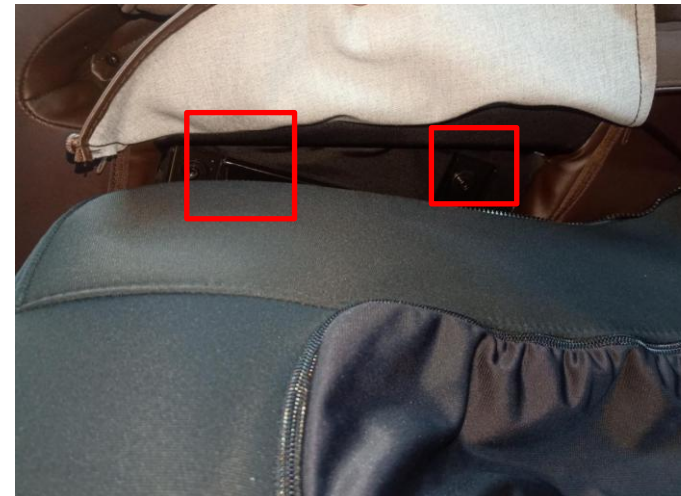
unzip the zipper



remove 2 screws fixing the side panel



unzi the zipper



remove 2 screws



三、Massage chair removal instructions



unzip the zipper



remove 2 screws of the right shoulder



unzip the zipper



remove 2 screws of the left shoulder



lift up the side panel, move the side panel backward



三、Massage chair removal instructions

3.10、disassembly of the inner right side panel



remove 15 screws separate the right side panel



unzip the zipper



remove 2 screws



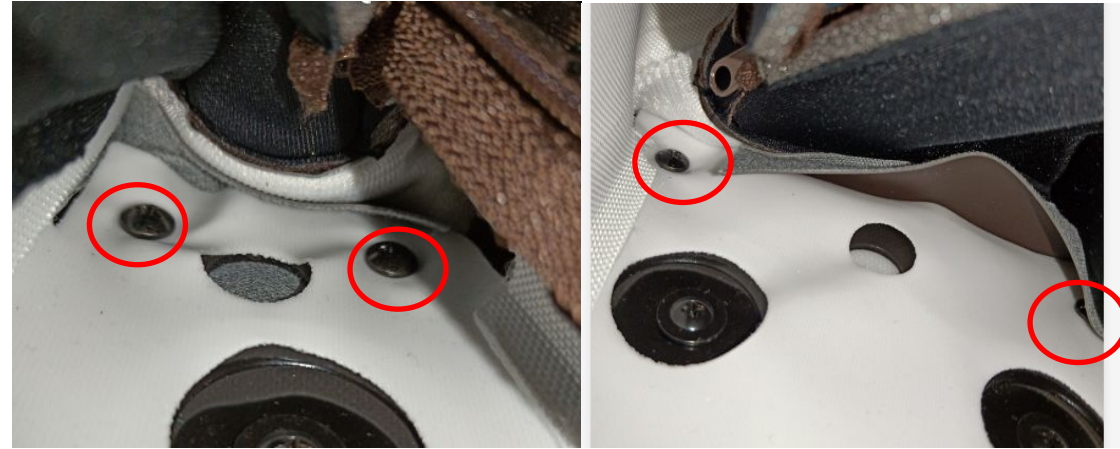
discontent the air hose



三、Massage chair removal instructions



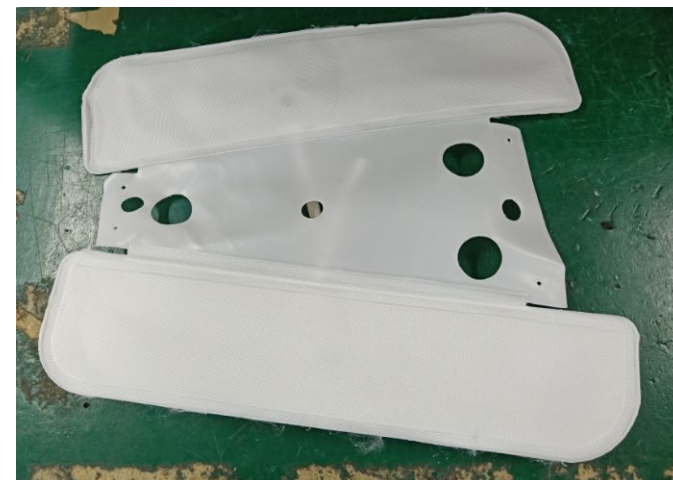
unzip the zipper



remove 4 screws fixing the air bag



discontent the air hose



air bag of hand had been taken down



三、Massage chair removal instructions



Disconnect the right horn cable



Remove four screws and replace the horn



cut the cable tie, remove 3 screws



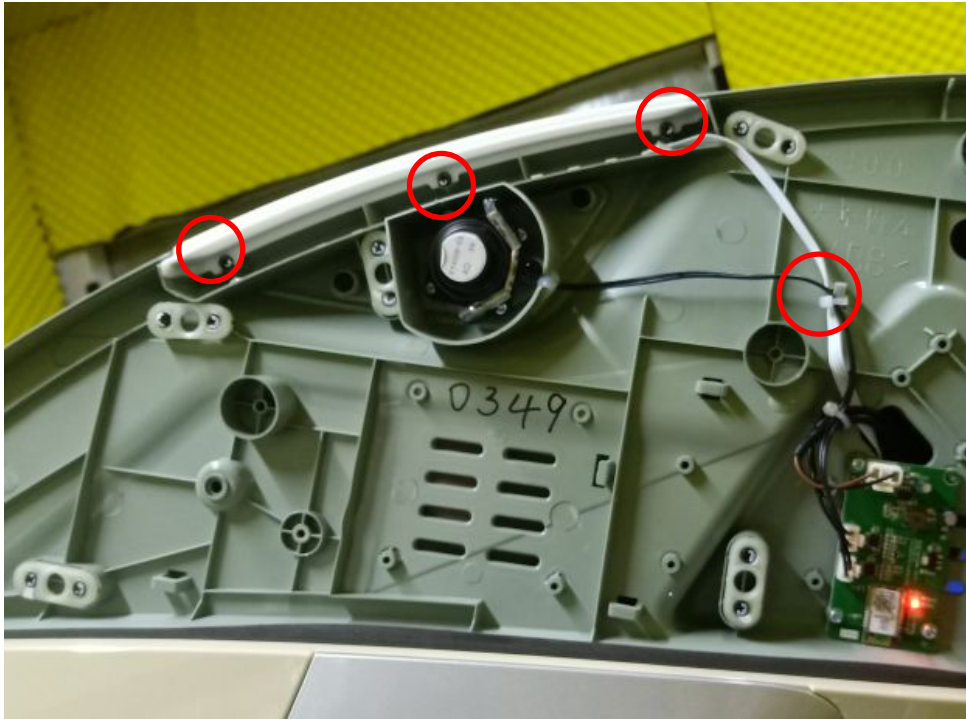
Disconnect the left horn cable



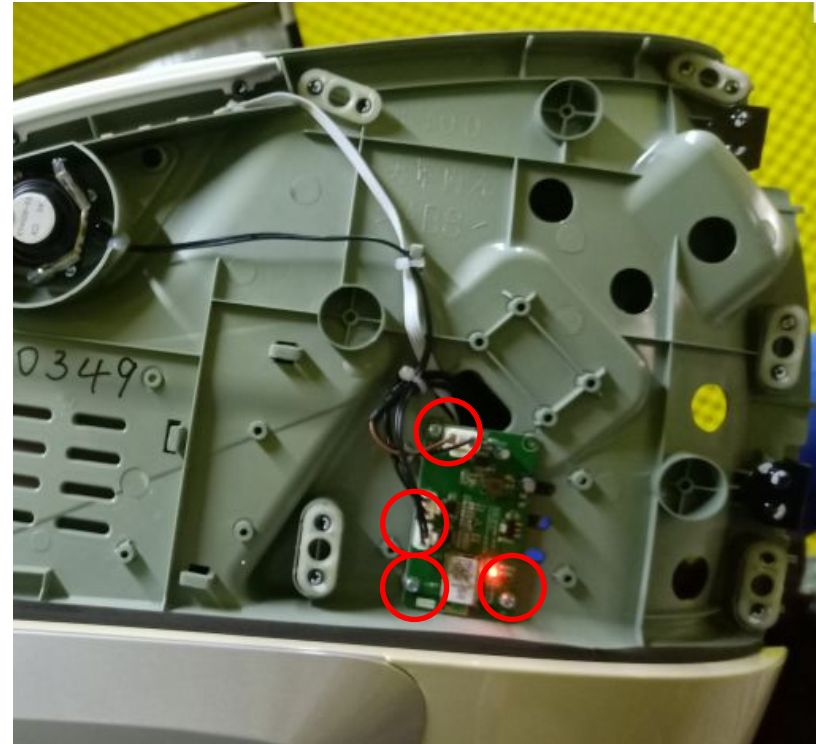
remove 4 screws



三、Massage chair removal instructions



cut the cable tie, remove 3 screws and take down left LED



disconnect 3 terminals, remove 3 screws, take down the Bluetooth PCB

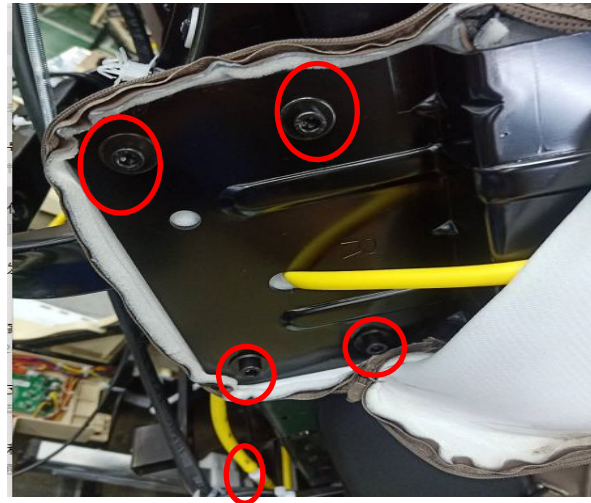


三、Massage chair removal instructions

3.11、disassembly of the shoulder unit



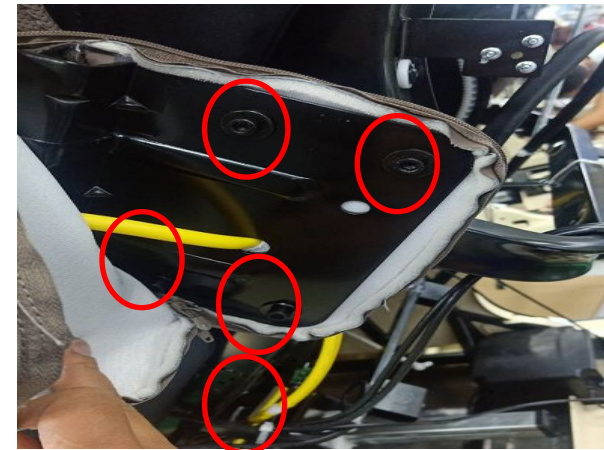
unzip the zipper of right shoulder



discontent the air hose, remove 4 screws



unzip the zipper of left shoulder



discontent the air hose, remove 4 screws



三、Massage chair removal instructions

3.12、disassembly of the legrest



unzip the zipper



remove 2 bolt



remove the screw



discontent the terminal
and air hose



remove the legrest



legrest



三、Massage chair removal instructions

3.13、disassembly of inne legrest

1.disassembly of the air bag for upper legrest



unzip the zipper



remove the screws



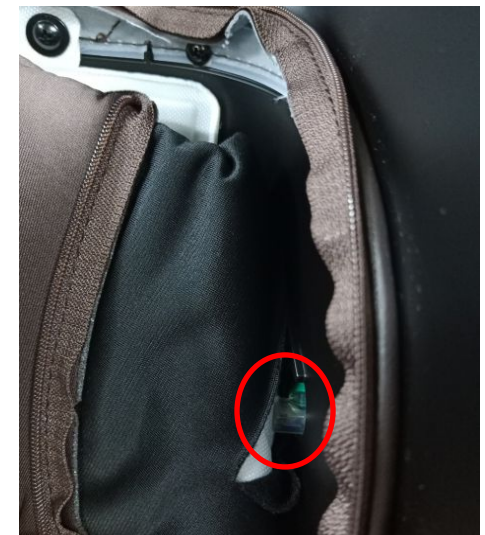
discontent the air hose



remove 2 screws



discontent the air hose



discontent the air hose



三、Massage chair removal instructions

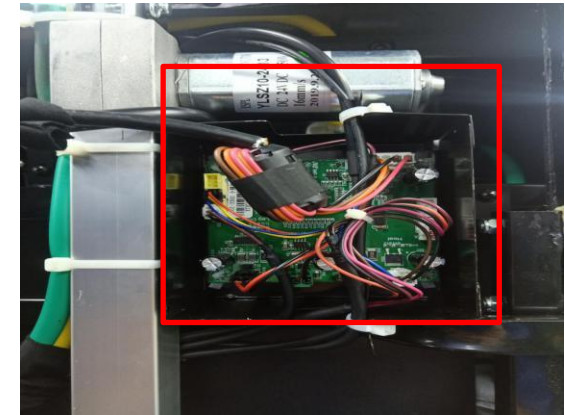
2. disassembly of the legrest PCB



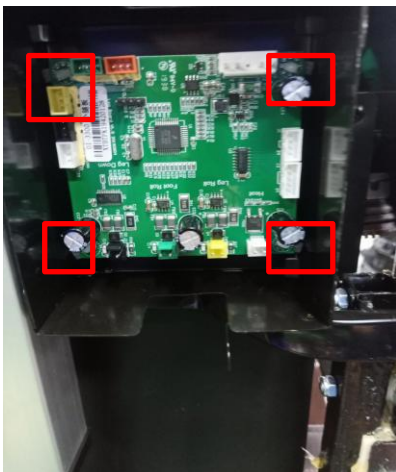
remove 3 screws fixing the rear cover



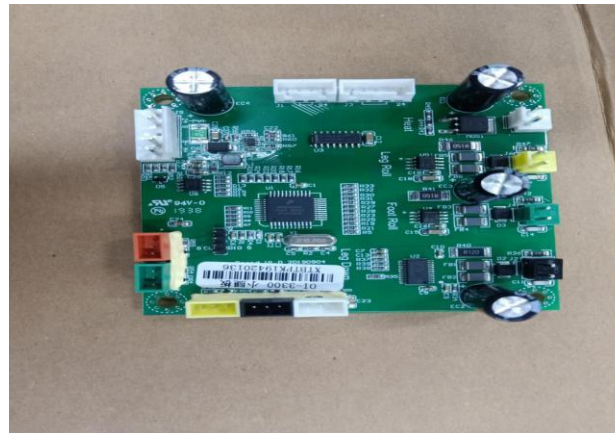
remove 3 screws fixing the box



disconnect all the terminals of the PCB



remove 4 screws



leg rest PCB



三、Massage chair removal instructions

3. disassembly of the foot massage



remove 3 screws fixing the rear cover and take it down



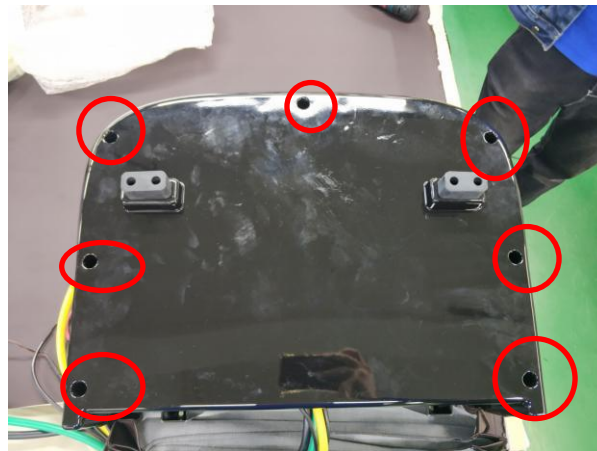
remove 5 screws and take down the cover



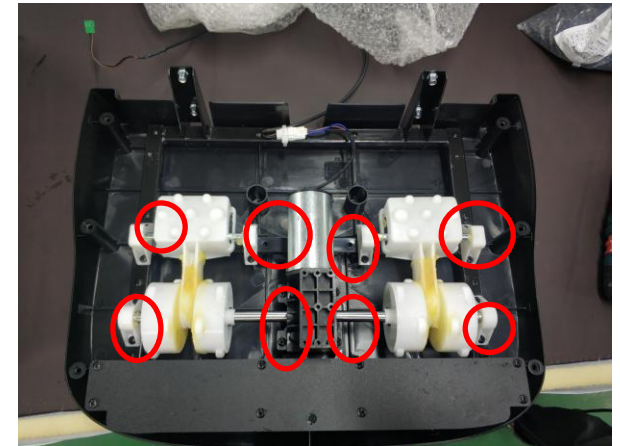
remove 4 screws



unzip the zipper



remove 7 screws, remove the cover

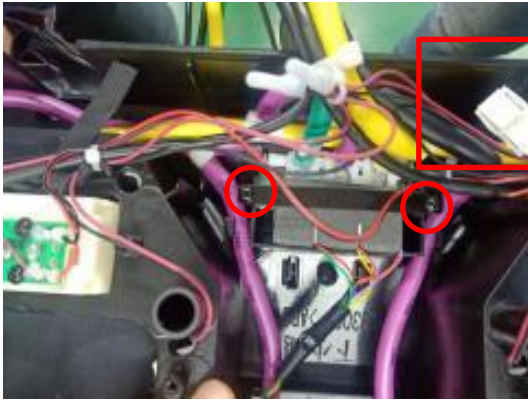


remove 16 screws separate the foot massage



三、Massage chair removal instructions

3. disassembly of air valve



Disconnect the terminal and remove 2 screws



disconnect 3 air hose



the air valve of leg rest

4. disassembly of the kneading motor of leg rest



remove 3 screws



unzip the zipper



take down the upper part

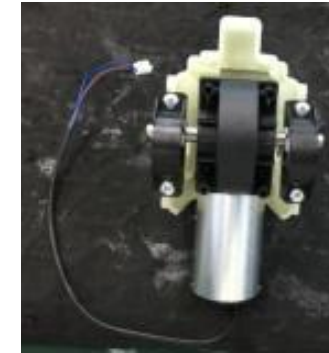
三、Massage chair removal instructions



remove 4 screws



remove the other 4 screws



the kneading motor of leg rest

5. disassembly of the leg rest actuator



cut the cable tie, take down the shaft



disconnect the 2 terminals



the leg rest actuator



三、Massage chair removal instructions

3.14、disassembly of the backrest actuator



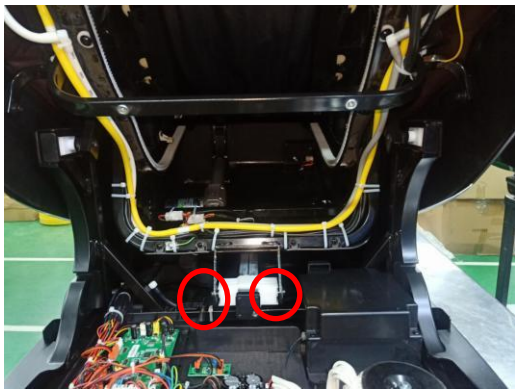
remove 4 screws



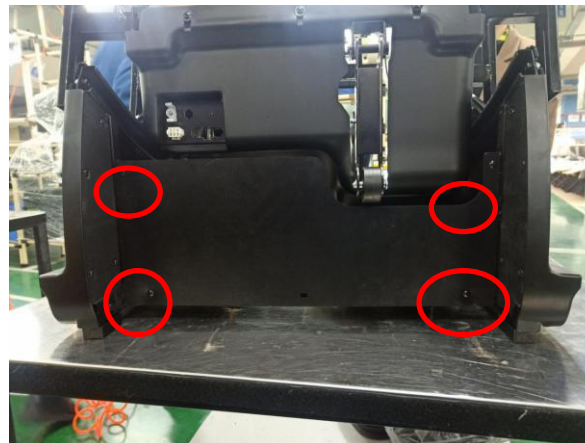
take down rear cover



remove 3 screws fixing main PCB box



remove 2 screws fixing the actuator



remove 4 screws on front board



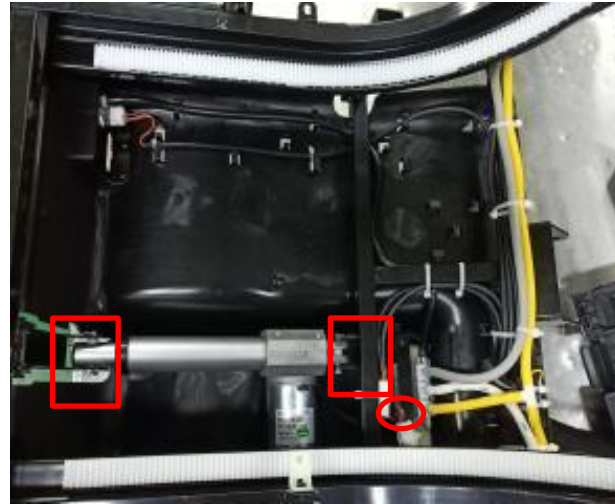
disconnect the terminal and take down the shaft

三、Massage chair removal instructions

3.15. disassembly of the leg rest actuator



- 1. take down backrest pad
- 2. unzip the zipper



cut the cable tie, disconnect the terminal, take down 2 shaft

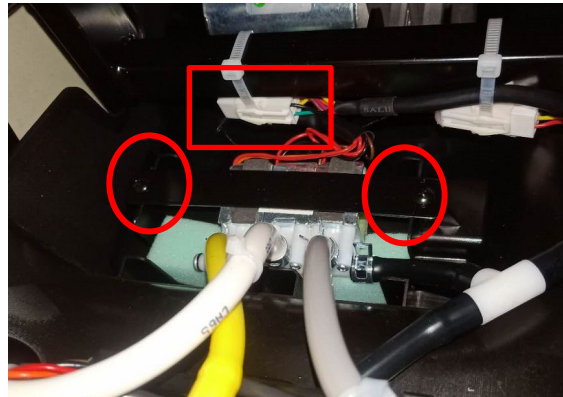


leg rest actuator

3.16. disassembly of the air valve



remove 2 screws and disconnect the terminal



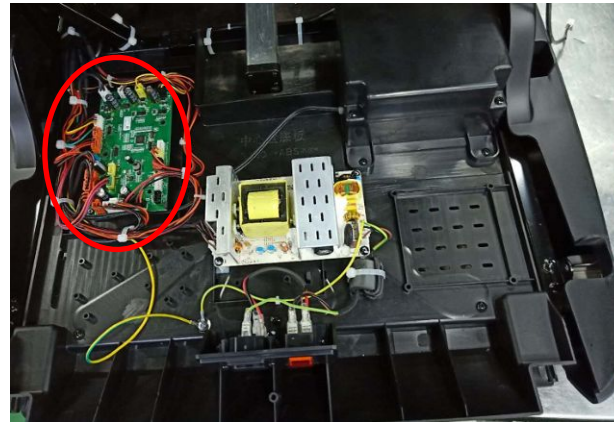
remove the air valve

三、Massage chair removal instructions

3.17. disassembly of main PCB box



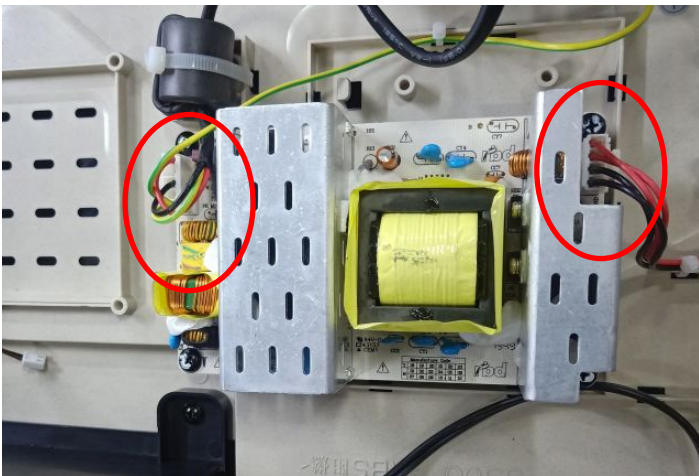
remove 3 screws, remove the cover



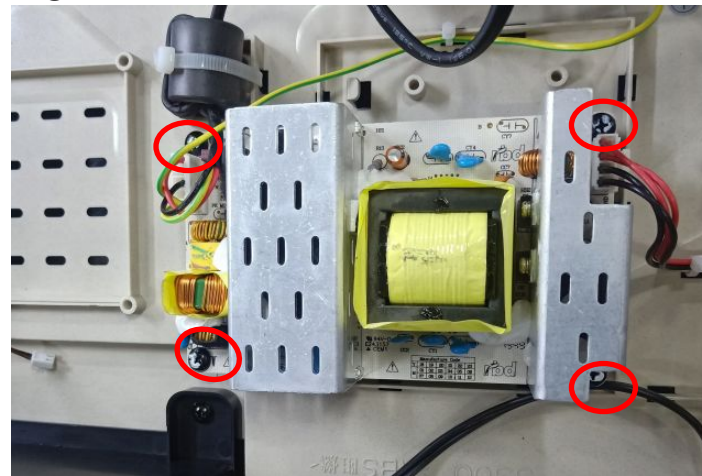
discontent all the terminals of the main PCB



remove the screw and remove main PCB



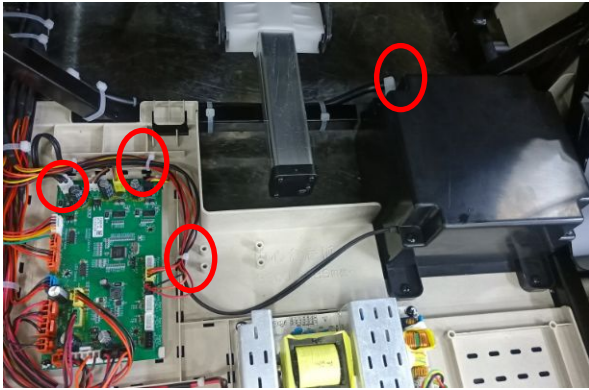
discontent 2 terminals of the power PCB



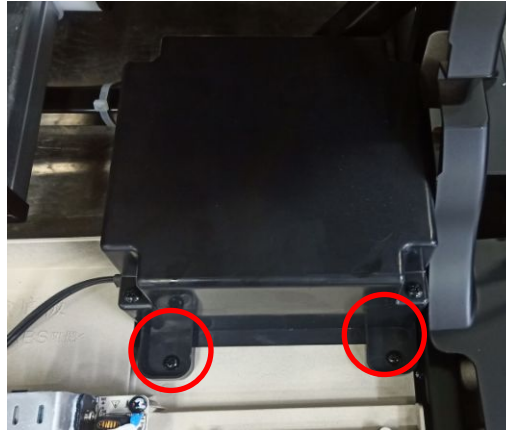
remove 4 screws and remove the power PCB



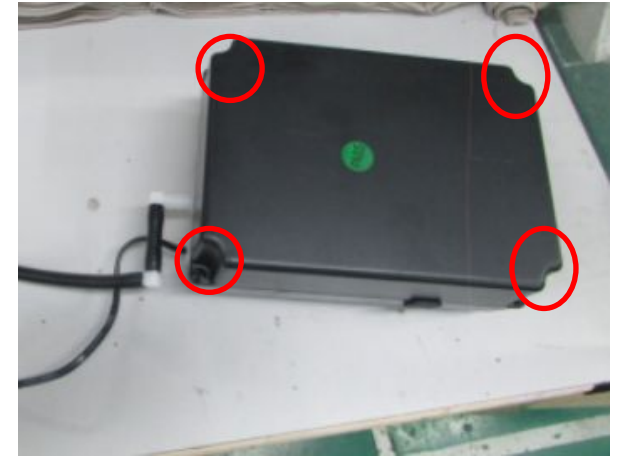
三、Massage chair removal instructions



disconten the white terminal, cut 3 cable tie, disconten the air hose



remove 2 screws, take out the air pump box



remove 4 screws



Turn it over, remove 4 screws



disconten the air hose



air pump

四、Massage chair fault judgment

1、error code

NO.	phenomenon	problem description	steps of shooting the trouble	remark
2	remote control did not connected more than 4 second	remote control wire is broken or the remote control is disconnected	reconnect the remote control or change the remote control wire.	enter auto-check model
3	backrest signal is abnormity	1.The connector of the backrest wire is not well connected 2.Backrest wire Broken	1.check the connector of backrest wire 2.change the backrest wire	enter auto-check model
4	rolling signal is abnormity	1.the up and down sensor broken 2.the backrest wire broken 3.the motor broken 4.3d PCB broken	1.replace the sensor 2.check the wire 3.check the motor 4.change 3D PCB	(1)enter auto-check model (2)Automatic shutdown in case of failure. And it is not allowed to start.
5	side panel signal is abnormity	1.The connector of the wire is not well connected 2.wire Broken	check the wire	enter auto-check model
6	leg rest tested more than 4 seconds	1.connector of leg rest wire not well 2.wire of leg rest broken	1.check the connector of leg rest wire 2.change the wire of leg rest	enter auto-check model
7	kneading signal is abnormity	1.the sensor broken 2.the backrest wire broken 3.the motor broken 4.3d PCB broken	1.replace the sensor 2.check the wire 3.check the motor 4.change 3D PCB	(1)enter auto-check model (2)Automatic shutdown in case of failure. And it is not allowed to start.



四、Massage chair fault judgment

8	tapping signal is abnormality	<ol style="list-style-type: none"> tapping motor is abnormality 3D PCB is abnormality connecting sensor of tapping motor is abnormality 	<ol style="list-style-type: none"> change tapping motor change 3D PCB change connecting sensor of tapping motor 	enter auto-check model
9	Telescopic signal is abnormality	<ol style="list-style-type: none"> 3D Telescopic motor is abnormality 3D PCB is abnormality connecting sensor of 3D Telescopic motor is abnormality 	<ol style="list-style-type: none"> change 3D Telescopic motor change 3D PCB change connecting sensor of 3D Telescopic motor 	enter auto-check model
10	low leg rest telescopic signal is abnormality	<ol style="list-style-type: none"> counting sensor broken wire broken motor broken 3D PCB broken 	<ol style="list-style-type: none"> change sensor check the wire check motor check 3D PCB 	enter auto-check model
12	leg rest actuator signal is abnormality	<ol style="list-style-type: none"> counting sensor broken wire broken motor broken actuator PCB broken 	<ol style="list-style-type: none"> change sensor check wire check motor replace main PCB 	enter auto-check model
13	backrest actuator signal is abnormality	<ol style="list-style-type: none"> counting sensor broken wire broken motor broken actuator PCB broken 	<ol style="list-style-type: none"> change sensor check wire check motor replace main PCB 	enter auto-check model



四、Massage chair fault judgment

14	rolling signal is abnormality	<ol style="list-style-type: none"> 1. the up and down sensor broken 2. the backrest wire broken 3. the motor broken 	<ol style="list-style-type: none"> 1. replace the sensor 2. check the wire 3. check the motor 4. change 3D PCB 	<ol style="list-style-type: none"> (1)enter auto-check model (2)Automatic shutdown in case of failure. And it
15	rolling signal is abnormality (UP and DOWN sensor effective at the same time)	<ol style="list-style-type: none"> 1. the up and down sensor broken 2. the backrest wire broken 3. the motor broken 4. 3d PCB broken 	<ol style="list-style-type: none"> 1. replace the sensor 2. check the wire 3. check the motor 4. change 3D PCB 	<ol style="list-style-type: none"> (1)enter auto-check model (2)Automatic shutdown in case of failure. And it is not allowed to start.
16	kneading signal is abnormality	<ol style="list-style-type: none"> 1. kneading motor is abnormality 2. 3D PCB is abnormality 3. connecting sensor is abnormality of kneading motor 	<ol style="list-style-type: none"> 1. change kneading motor 2. change 3D PCB 3. change connecting sensor of kneading motor 	enter auto-check model
18	Telescopic signal is abnormality (UP and DOWN sensor effective at the same time)	<ol style="list-style-type: none"> 1. 3D Telescopic motor is abnormality 2. 3D PCB is abnormality 3. connecting sensor of 3D Telescopic motor is abnormality 	<ol style="list-style-type: none"> 1. change 3D Telescopic motor 2. change 3D PCB 3. change connecting sensor of 3D Telescopic motor 	enter auto-check model



四、Massage chair fault judgment

19	kneading motor broken	kneading motor broken	change kneading motor	(1)enter auto-check model (2)Automatic shutdown in case of failure. And it is not allowed to start.
20	rolling motor broken	rolling motor broken	change rolling motor	(1)enter auto-check model (2)Automatic shutdown in case of failure. And it is not allowed to start.
21	3D motor broken	3D motor broken	change 3D motor broken	(1)enter auto-check model (2)Automatic
22	tapping motor broken	tapping motor broken	change tapping motor	(1)enter auto-check model (2)Automatic
65	remote control tested any key pressed get stuck	1. one of the KEY has been blocked.	1. check the key of the remote control	turn on the chair
66	remote control did not connected	1. remote control wire is broken or the remote control is disconnected	1. reconnecte the remote control or change the remote control wire.	turn on the chair
67	Communication exception	There is communication but the data is abnormal, and the communication interference is detected		