



蒙发利

EASEPAL

中国·厦门蒙发利科技有限公司

Xiamen Comfort Science & Technology Co.,Ltd

产品维修手册

Maintenance Service Manual

产品型号/MODEL: EC-623A

适用电压规格/ voltage specification: 110-120V

蒙发利集团·客服

By the Easepal's Customer Service Dept.

一、产品故障列表 Trouble List

如下为EC-623C常见的故障现象及维修方法。

Common Troubles and Maintenance Methods are listed as below:

故障序号NO	现象 phenomenon	描述 Description	维修方法 maintenance method
01	开机无功能 No function	A. 手控器无显示: LCD NO DISPLAY ①、保险丝烧掉Fuse melts (电源盒处和中心板上(in the Power Source Box and main PCB) ②、电源电路接触不良。Power supply circuit Poorly connected	①、更换保险丝 Replace Fuse ②、更换电源盒 Replace Power Box ③、更换电源滤波器 Replace EMC Board ④、更换中心板 Replace main PCB

		<p>③、电源滤波器坏 EMC Board Failed</p> <p>④、中心板坏 Main PCB failed</p>	
		<p>B.手控器有显示: LCD HAS DISPLAY</p> <p>①、机械开关坏掉 或是机械开关的线材断开。 Mechanical switch fails or it' s wire is broken</p> <p>②、上下行程光电坏。 Up or Down Stroke Photoelectricity was failed</p> <p>③、中心板坏掉 Main PCB failed</p> <p>④、开机直揉捏其他按键无效 kneading all the time from powerand no response with other button</p>	<p>①、更换机械开关或是线材 replace mechanical switch or wire</p> <p>②、更换行程光电 Replace stroke photoelecruicity</p> <p>③、更换中心板 Replace main PCB</p> <p>④、宽度检测板坏, 更换宽度检测板 Replace Width Inspection Board</p>
02	<p>宽中窄不能切换 the Width switchover isn` t change</p>	<p>①、中心板宽度检测端子线材接触不良。The terminals of Width Inspection on main PCB with wires were poorly connected</p> <p>②、机芯宽度检测板端子线材接触不良。The terminals of Width Inspection on mechanical with wires were poorly connected</p> <p>③、宽度检测板坏。 Width Inspection failed</p> <p>④、中心板坏Main PCB failed</p>	<p>①、②点将端子接插到位或是更换线 材Plug the terminals well or replace the wires</p> <p>③、更换宽度检测板 Replace Width Inspection</p> <p>④、更换中心板 Replace the main PCB</p>
03	<p>不行走 NO Rolling</p>	<p>端子或是线材接触不良 Terminals or Wire Poorly Contact</p> <p>②、上、下行程光电组件坏。 UP/ Down-stroke Photoelectricity Subassembly Failed</p> <p>③、行走电机坏</p>	<p>①、将端子接插到位或是更换线材。 Plug the terminal well or replace the wires 更换上、下行程组件 ReplaceUP/Down-StrokeSubassembly</p> <p>③、更换机芯。 Replace gear box</p> <p>④、更换中心板</p>

		Rolling Motor Failed ④、中心板坏 Main PCB failed	Replace main PCB
04	不揉捏 No kneading	①、中心板端子没插到位或是线材接触不良。The terminals on main PCB and wires are poorly connected 、揉捏电机坏 Kneading motor failed ③、中心板坏Main PCB failed	①、将端子接插到位或是更换线材。 Plug the terminal well or replace the wires ②、更换机芯 Replace gear box ③、更换中心板。 Replace main PCB
05	不敲击 No tapping	①、中心板端子没插到位 The terminals on main PCB and wires are poorly connected ②、敲击电机坏 Tapping motor failed ③、中心板坏Main PCB failed	①、将端子接插到位 Plug the terminal well ②、更换机芯 Replace gear box ③、更换中心板R Replace main PCB
06	手控器上按键无反映 The all buttons of controller aren't response	①、端子接触不良或线材接触不良 The terminals and wires are poorly connected ②、手控器PCB板坏 The PCB in the controller failed	①、将端子接插到位或是更换线材。 Plug the terminal well or replace the wires ②、更换手控器 Replace the controller
07	不升倒背 backrest can't recline or lift	①、电动推杆连接线未接插到位 The terminal of electrically operated pusher and wires are poorly connected ②、电动推杆坏 The electrically operated pusher failed ③、中心板坏 Main PCB failed	①、将连接线接插到位 Plug the terminal well ②、更换电动推杆 Replace the electrically operated pusher ③、更换中心板 Replace main PCB

08	小腿不能升降 calves-rest can't lift or recline	①、电动推杆连接线未接插到位 The terminal of electrically operated pusher and wires are poorly connected ②、电动推杆坏 The electrically operated pusher failed ③、中心板坏Main PCB failed	①、将连接线接插到位 Plug the terminal well ②、更换电动推杆 Replace the electrically operated pusher ③、更换中心板 Replace main PCB
9	座部电机不振动 no vibration by the motor in the seat-pad	振动电机坏 Print motors failed 端子接触不良或是线材坏掉。 The terminals and wires are poorly connected or the wires fail 中心板坏。Main PCB failed	更换振动电机 Replace the print motor 将端子接插到位或者更换线材。 Plug the terminal well or replace the wires 更换中心板 Replace main PCB
10	小腿电机不振动 no vibration by the motor in the calves-rest	①、振动电机坏。 Print motors failed ②、端子接触不好或是线材坏掉。 The terminals and wires are poorly connected or the wires failed ③、中心板坏。Main PCB failed	①、 更换振动电机 Replace the print motor ②、 将端子接插到位或者更换线材。 Plug the terminal well or replace the wires ③、更换中心板 Replace main PCB
11	座部不充气 no gas charging in the seat-pad	①、气泵泄气阀端子接触不良 The terminal of the snuffle valves and wires are poorly connected ②、泄气阀坏 The snuffle valves fail	①、将端子接好 Plug the terminal well ②、更换泄气阀。 Replace the snuffle valves ③、更换气泵。 Replace the inflator pump
12	小腿不充气 no gas charging in the calves-rest	③、气泵坏The inflator pump failed	④、更换中心板 Replace main PCB
13	靠背腰部或肩部不充气 no gas charging in the backrest	④、中心板坏Main PCB fails	

二. 故障检修流程图 Troubleshooting Process

在修理或者替换零配件过程中注意以下几点:

在拆卸连线, 移动连接器, 或者替换部件前一定要断开电源线插头。

因为半导体(像集成电路, 或者其它的)很容易被静电损坏, 所以当要触摸PCB前, 请确保你的身体和大地有连线(佩带静电手环), 或可以将手放在地端, 以释放身体上所带的静电。

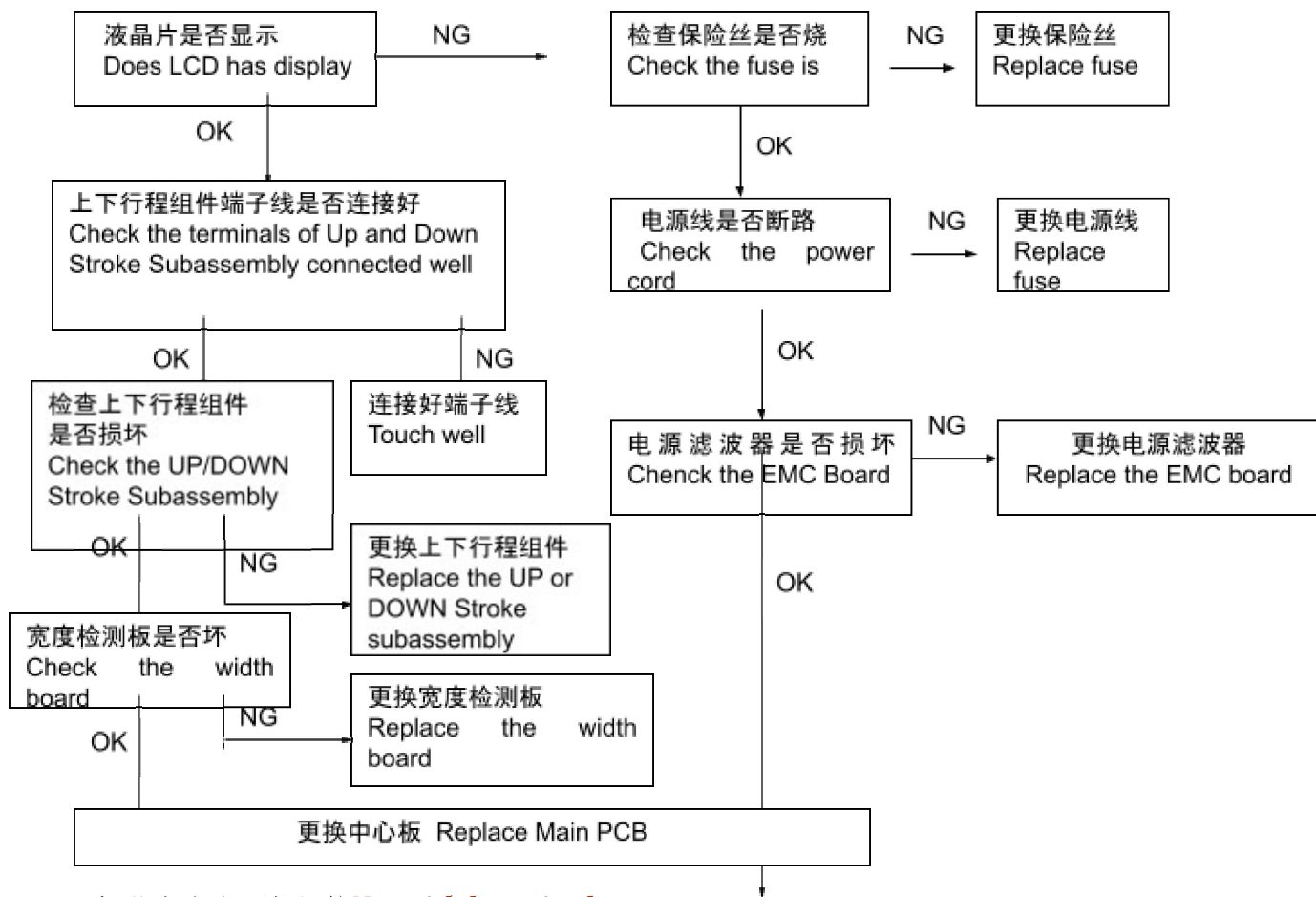
Notes for repairing chair or replacing parts

A. Make sure the power is off when you tear down the wires, move terminals or replacing parts.

B. The semiconductors(like IC or something else) will easily be damaged by static.

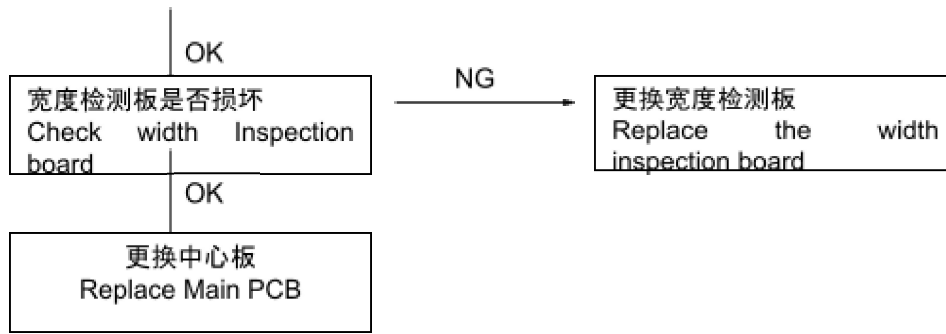
So you touch the PCB before, please make sure your body is connected with the ground.

1、开机无功能/ No function

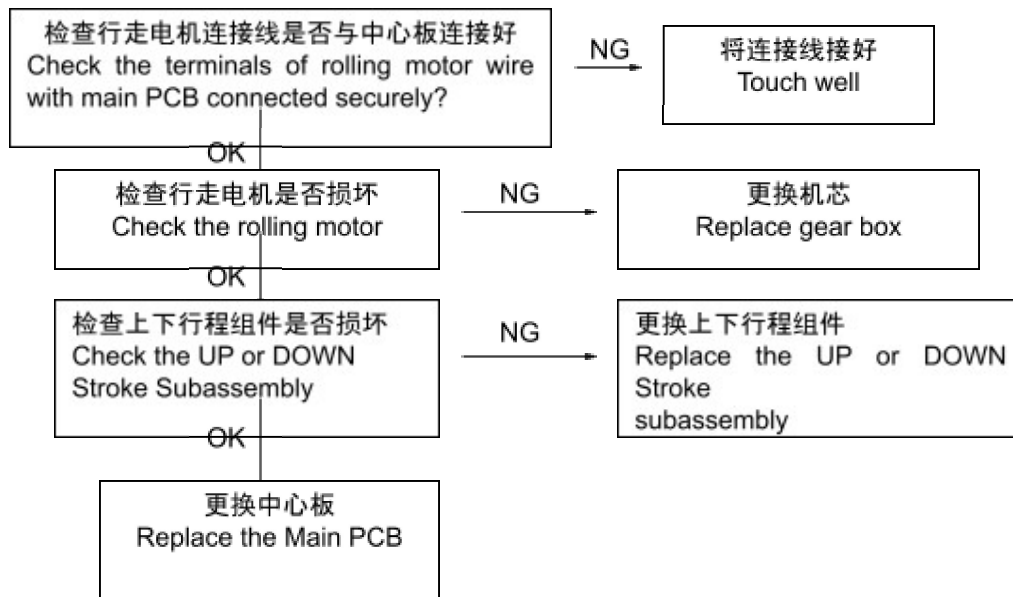


2、机芯宽中窄不能切换 No width switchover

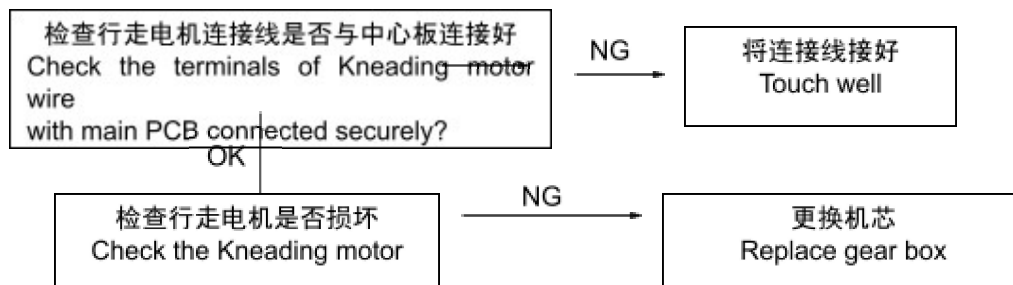


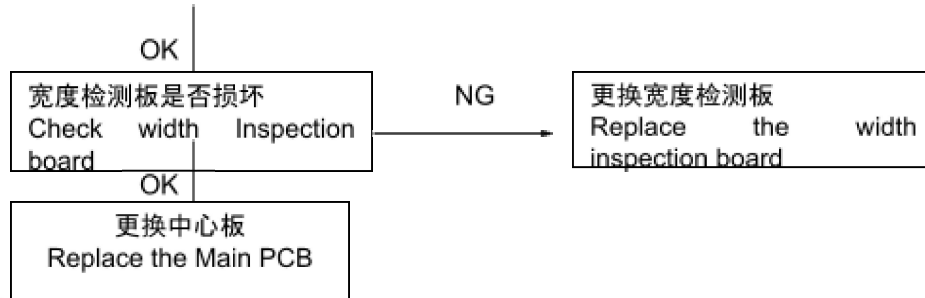


3、不行走/ NO ROLLING

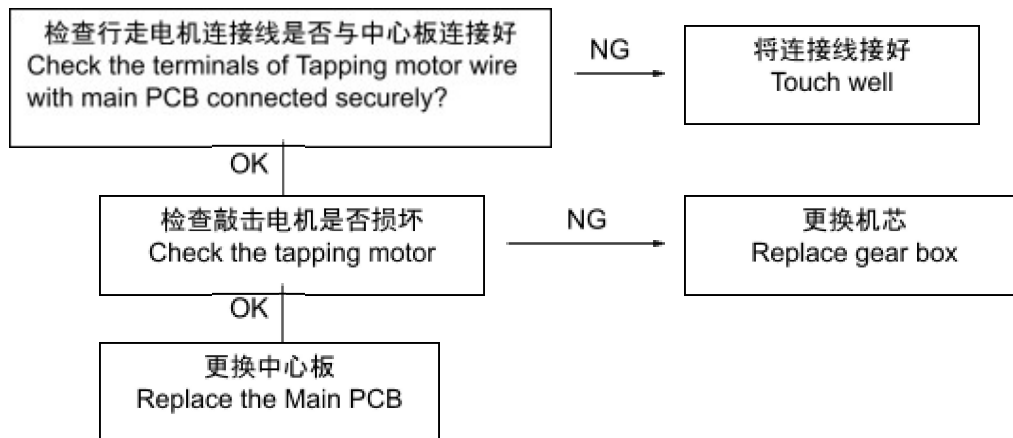


4、不揉捏/ NO KNEADING



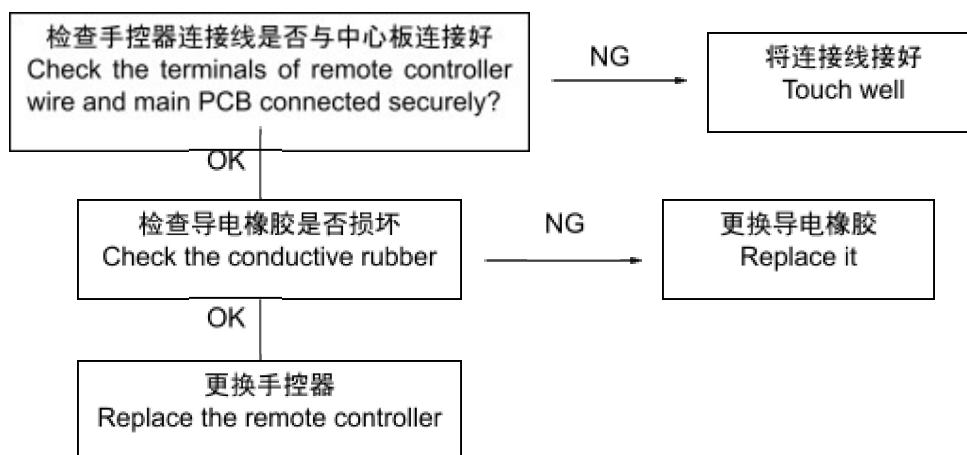


5、不敲击/ NO TAPPING



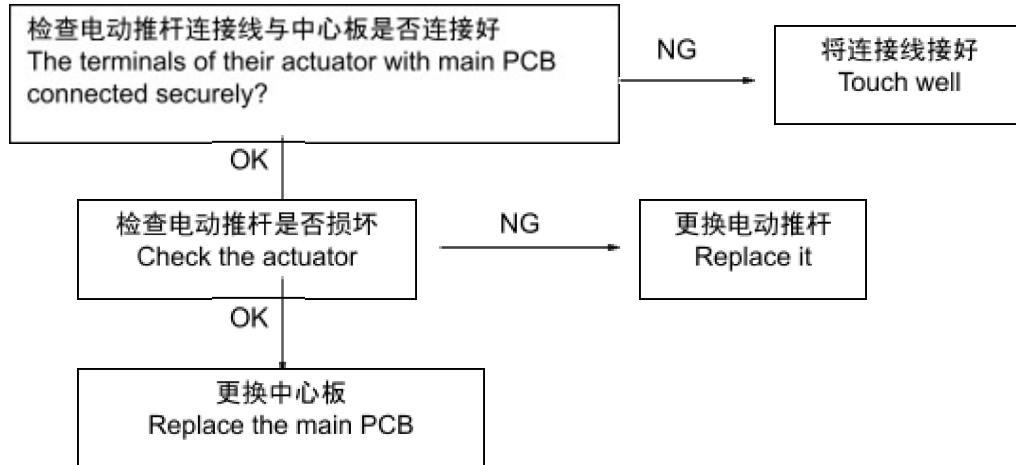
6、手控器上按键无反应

The all buttons of controller aren't response



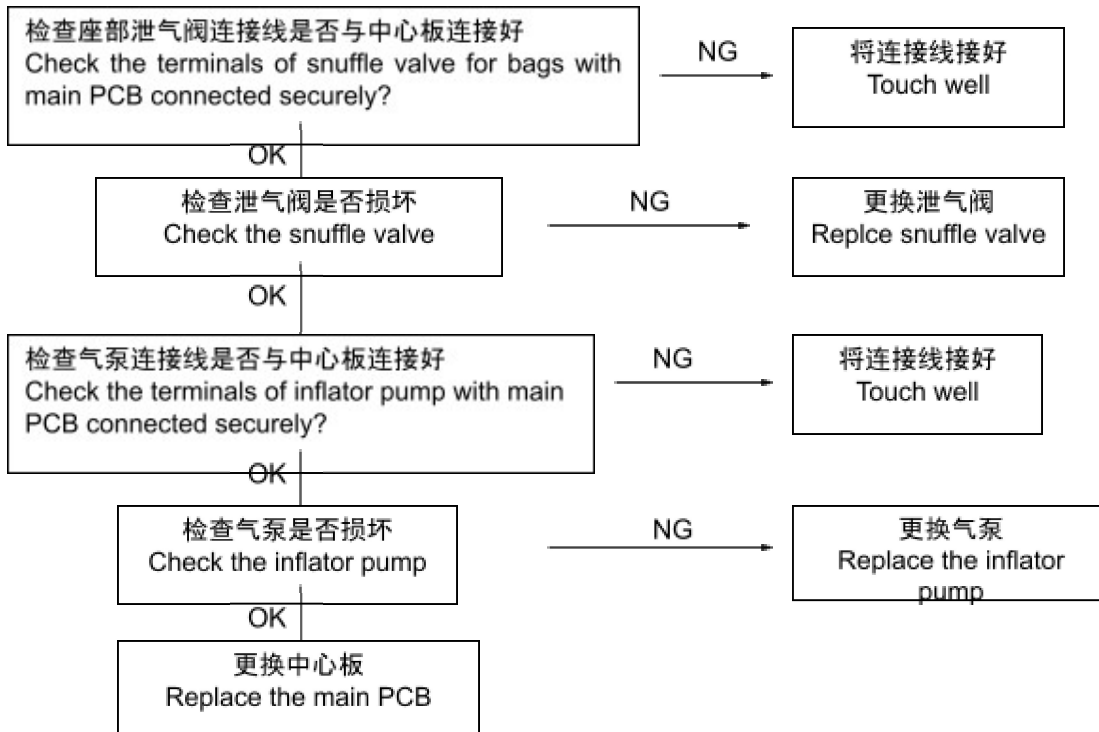
7、电动推杆(靠背/小腿/零重力)不工作

Actuator doesn't work.(Backrest and legrest)



8、座部/腿部/靠背腰部或肩部不充气

No gas charging (Seat pad / Calves-rest/Backrest part)



目录

Table of Contents

1.靠背枕头的拆解 Disassembly of the pillow	12
2. 披风的拆卸 Disassembly of the backrest pad	12
3. 靠背后盖的拆卸 Disassembly of the backrest cover	13
4.机芯组件的更换 Replace the subassembly of gearbox	14
5. 机芯上下行程光电的拆解 Replacing up & down limit sensor.	17
6. 手控器的更换 Change the remote controller	19
7.肩部的拆卸 Disassembly of the shoulder	20
8. 侧板的拆卸 Disassembly of the side board	21
9. 更换靠背&小腿电动推杆 Replace the backrest 、 seat-rest actuator	22
10. 更换中心板 Replace The Main PCB	25
11.更换充气泵 replace inflant pump	27
12.变压器的更换 replace the transformer	28
13.泄气阀的更换 replace the air valve	28
14. 小腿的拆卸及内部结构 Disassembly the leg rest and internal structure	29
附: 实物接线图 The physical wiring diagram	33

1.靠背枕头的拆解 **Disassembly of the pillow**

The chair have two pillows

A. 拉开粘扣, 即可取下小枕头

Pull up the thread gluing,very easy take down



2. 披风的拆卸 **Disassembly of the backrest pad**

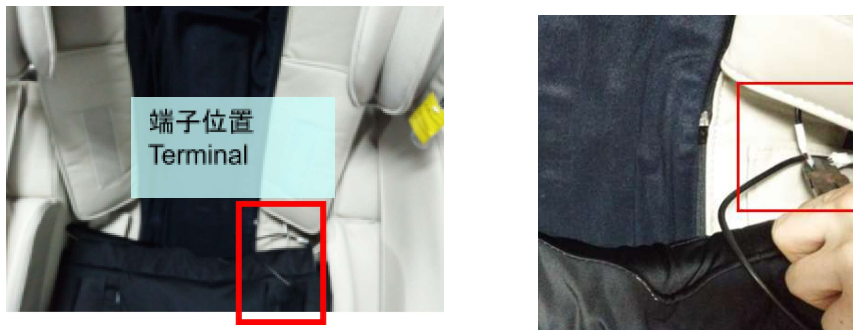
A. 拉开披风与靠背的拉链

Unzip zippers of the pad,



B. 剪断坐垫与座架连接端子

Cutting cushion and mount connection terminals



C. 拉开座部与腿部之间的拉练,之后再拉开内部缓冲垫的连接,即可以取下披风了

OPEN zipper on the seat and between of leg, then open zipper with the backrest pad



拉开连接拉练
Open zipper of inside



NEXT:

3.
A.



披风组件
Backrest pad



4. 机芯组件的更换 **Replace the subassembly of gear box**

A. 参考步骤3拆开后背

Refer NO.3 disassembly of the backrest cover

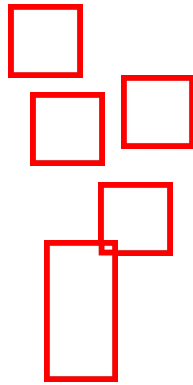
B. 开机后让机芯停在顶部

Power on ,let the gear box stop at the top of backrest

C. 然后拆除机芯上的引线

Then Disconnect the wire at the gear box.





NO.A&B

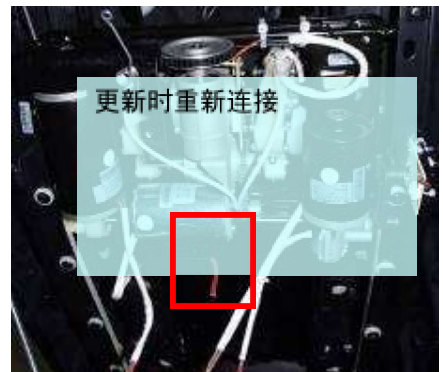
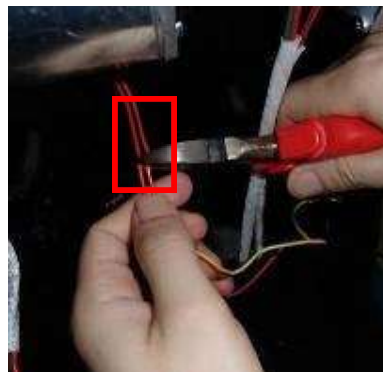
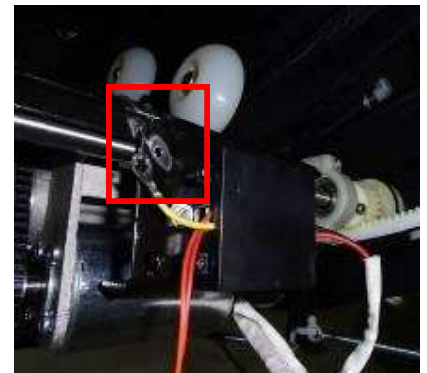


NO.C

NEXT:



NEXT:

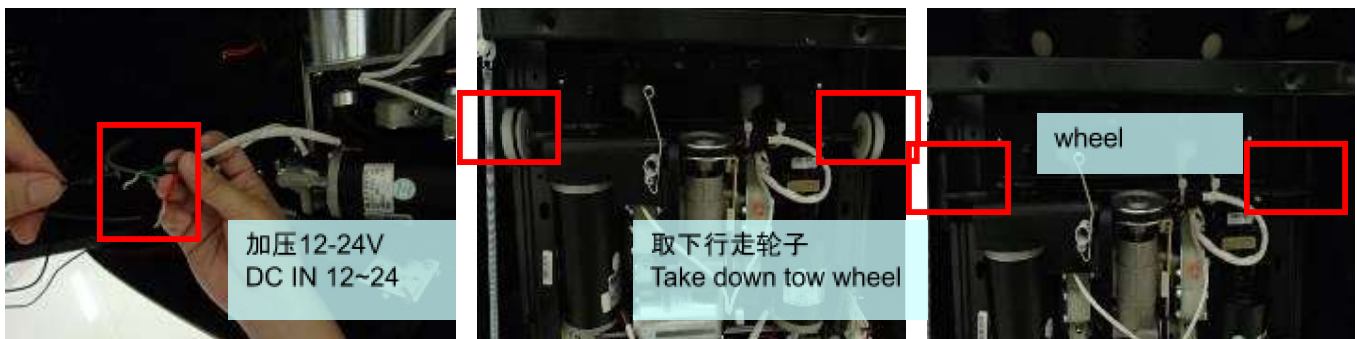


C. 打开机芯出行缺口,然后取下机芯防撞块

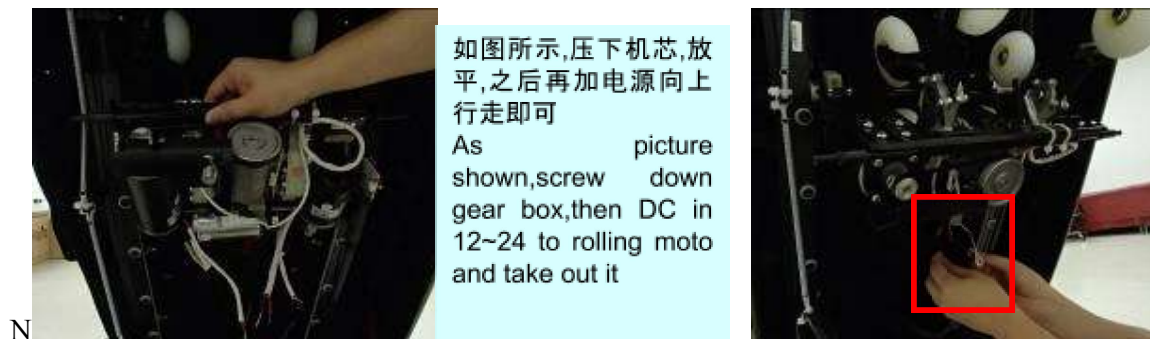
Open the gear box way out at backrest top, then take down the Movement collision block



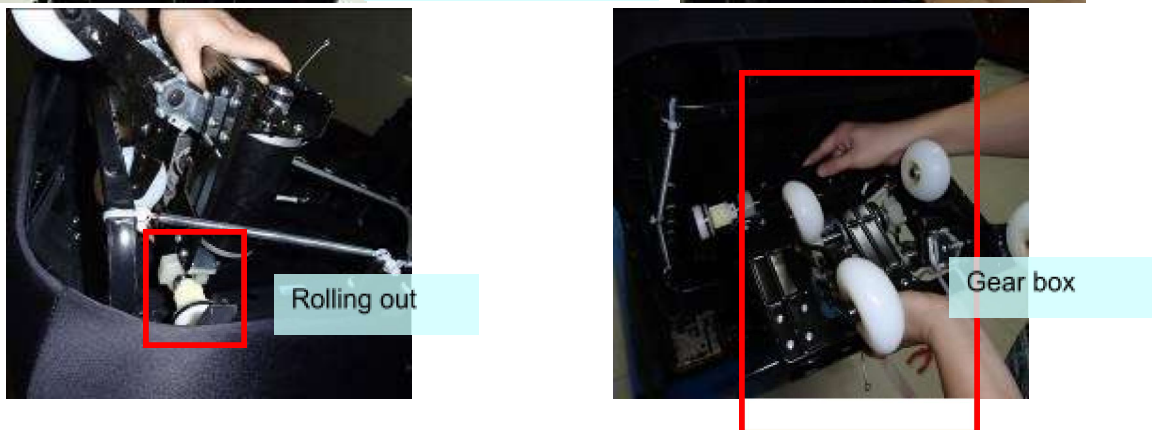
D. 给行走电机加入直流12~24V电源,让机芯向上推动并取出它
 DC12~24V IN to the rolling motor , then move out the gear box



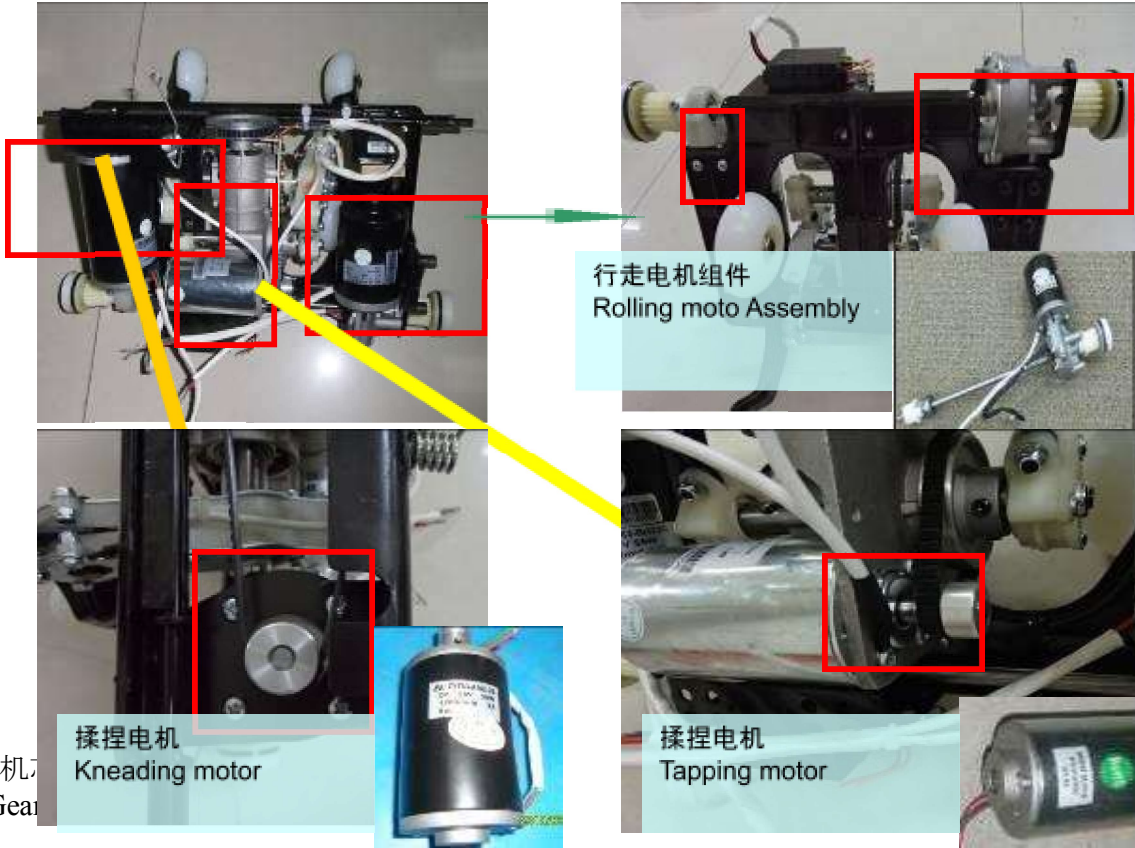
NEXT:



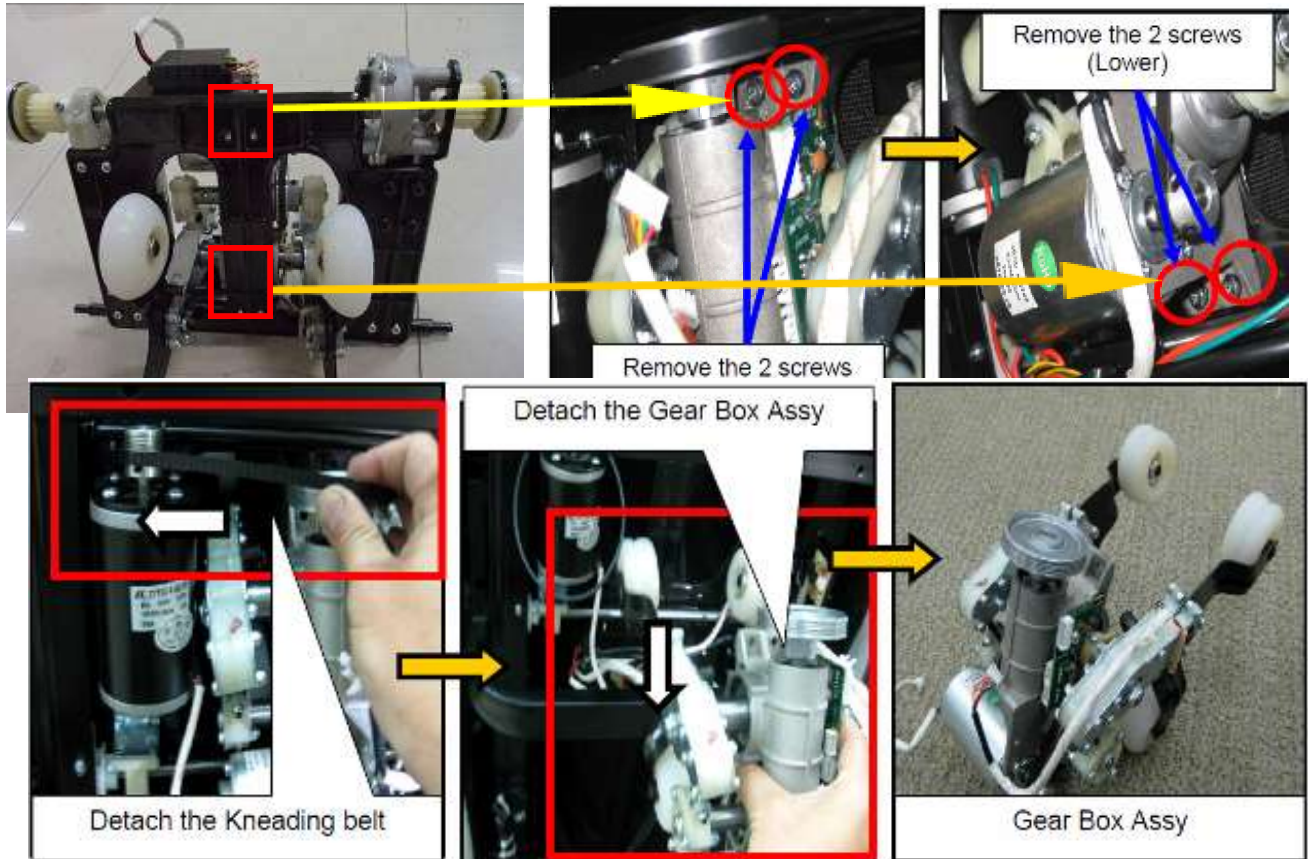
N



E. 机芯图解
Gear box



F. 机芯
Gear



5. 机芯上下行程光电的拆解 Replacing up & down limit sensor.

打开背架后盖后,我们可以看到上下行程光电

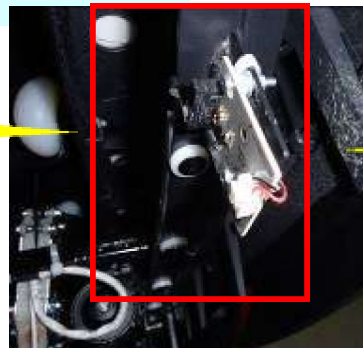
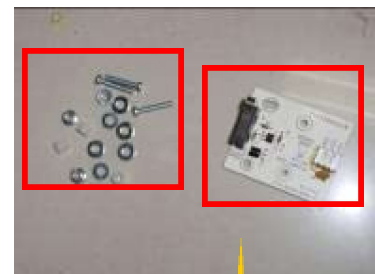
we can find up & down limit sensor

A. 打开后盖参考步骤3, Ref no.3: Disassembly of the backrest cover



B. 上行程光电的拆解比较简单,如图所示

Disassembly the up limit sensor is very easy(As shown picture)



C. 下行程的拆解方法比较困难,如下图示

Disassembly the down limit sensor is difficulty(As shown picture)



NEXT.



手控器的更换 **Change the remote controller**

(以左侧为例, 右侧同理)(As an example, on the left side of the right side in the same way)



在背架后下方可以看到如图装置, 只需拆下R形夹及逆时针
旋转接头固定装置就可取下手控器了
Take down the screw and Rotating Joint only

7.肩部的拆卸Disassembly of the shoulder

(以左侧为例, 右侧同理)(As an example, on the left side of the right side in the same way)

A.肩部的拆卸

Disassembly of the shoulder



拉开连接拉练
Open zipper of inside



拉开拉链后将皮套掀起
可以看到一块黑色PP板
Open zipper of inside
After Open zipper can
see a black PP board



拆除4颗螺钉和断开气管
Demolition of four screws
and Disconnect air
terminal



B.卸下肩部宽度调节组件

Remove the shoulder width adjusting compo



拆除6颗螺钉
Demolition of six screws

C. 分解肩部组件



Demolition of air bag



拆除装饰件
Demolition of decoration

侧板的拆卸 **Disassembly of the side board**

(以左侧为例, 右侧同理) (As an example, on the left side of the right side in the same way)

A. 拆卸装饰板

Demolition of decorative



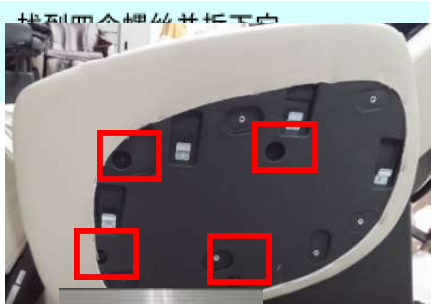
拉开连接拉练
Open zipper of inside



拆除2颗螺钉
Demolition of two screws



B. 拆解侧板 **Disassembly the side panel**



断开气管和端子
Disconnect air hose and terminal



左侧板
Left side panel



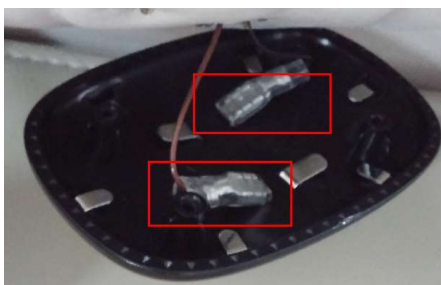
检测组件



拉开连接拉练
Open zipper of inside



找到四个螺丝并拆下它
Find four screws and dismantled



拆除2个固定端子
Disconnect the two fixed terminals

9. 更换靠背&小腿电动推杆 **Replace the backrest 、 seat-rest actuator**

A: 取下后档布, 可以看到靠背电动推杆后方固定位置

After take the rear bumper cloth, you can see the backrest actuator



个固定螺丝
and screw 2 screws



NEXT:



拆除2个固定螺丝
Loose and screw 2 screws

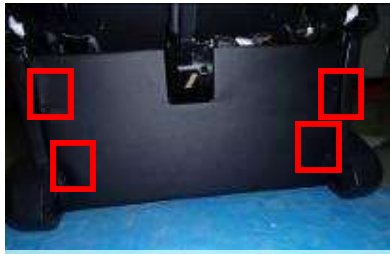


拆除之后
After take down screws

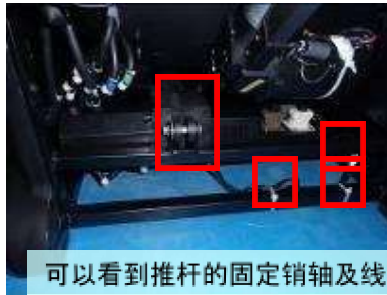
B:抬起小腿可以看到下前挡板, 拆除它

After pull up the legrest , you can see the front board and take it
取下电动推杆的波浪形卡口销及销轴, 分离电动推杆端子.

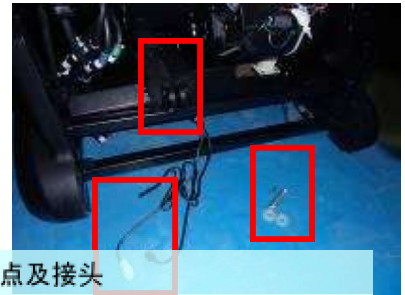
Take away the pin and disconnect wire terminal of a actuator



拆下下前挡板
Moving the plate washer



可以看到推杆的固定销轴及线材固定点及接头
Take down the pin of actuator and open the wire terminal



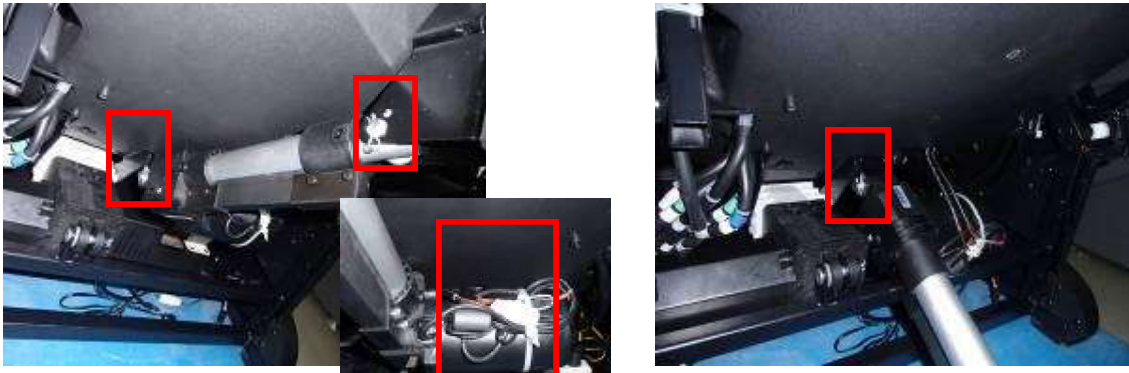
NEXT:

After moving out the backrest actuator it



Backrest actuator

C. 小腿电动推杆的更换



抬起小腿拆下前挡板,之后定位图中三个位置,除下它们即可(建议先拆上方销轴以方便拆底部销轴)
Pull-up the legrest and disassembly the plate washer then location map of three position, (moving the top of pin first)

NEXT

取下电动推杆的波浪形卡口销及销轴,分离电动推杆端子.

Take away the two pins and disconnect wire terminal of a actuator



Legrest actuator

10. 更换

A. 用十字螺丝刀取下固定中心盒上前盖的3个十字盘头螺钉,就可以取下上前盖

Slacken and remove fixing the 3 screws in the PCB box.

Then you can remove the front cover away



中心盒上前盖上的3枚螺丝
the 3 screws fixing front upper cover for PCB box



NEXT



定位图中三个位置,除下它们即可
disassembly the plate washer then location map of position,

B: 拔掉连接端子后。将中心盒拉出下,方便拆取中心盒上的任一部件。

Disconnect all wire terminal then take way out the PCB BOX

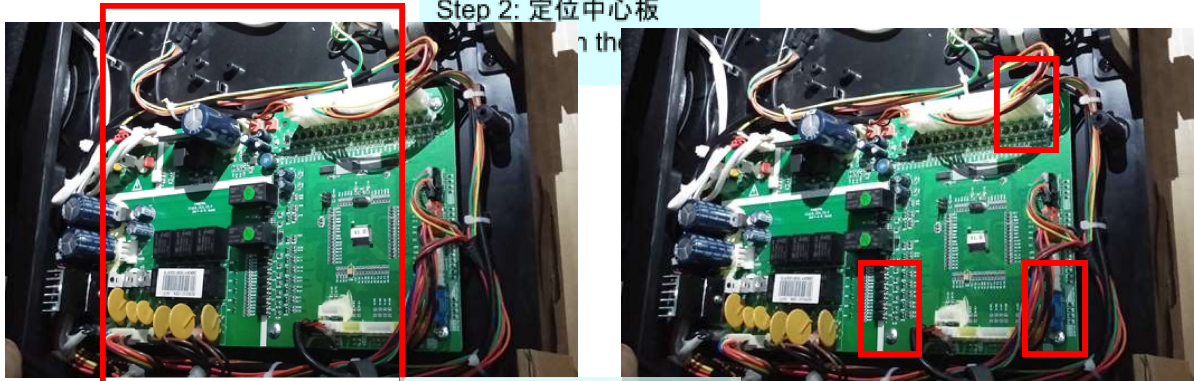


拉出中心盒

Take out PCB B

Step 2: 定位中心板

in the



Step 3: 取下中心板

Take out the PCB



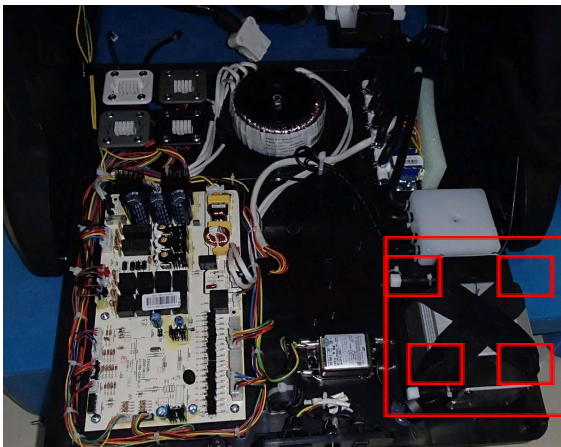
11.更换充气泵 **replace inflant pump**

参考NO.9 拆开中心盒, 然后定位充气泵

Refer NO.9 replace pcb to open the pcb box and location at inflant pump

A. 取下中心盒上前盖。

Take down the front cover of main PCB box



取下固定充气泵的四枚螺丝
Slack and remove the 4 screws

B. 用工具拔出充气泵底部的橡皮堵头

Pull out the rubber poles fixing the inflator pump on the base plate with nipper pliers.



拔出塑胶堵头
Pull out the rubber poles



C.断开充气泵的接线端子

Disconnect the terminal of the inflator pump, then cut the cable ties fixing the wires.

D.拔开充气泵的气管接头

Pull out the gas hose connecting the inflator and snuffle valves. Then the whole pump can be removed.

E.逆序换上新的充气泵

Proceed in the reverse order of the disassembly when replacing a new one.

注意Attention: 装回充气泵时, 要将橡胶堵头放到中心盒底盘的孔内, 并用尖嘴钳从下面拉出, 确保充气泵已经固定住When fixing the pump, you should insert the rubber poles into the hole of the base plate, then pull them though with nipper pliers, then the rubber poles are locked in the hole.

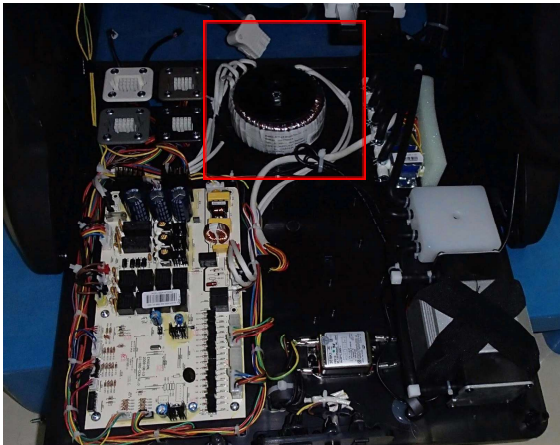
12.变压器的更换 **replace the transformer**

参考NO.9 拆开中心盒, 然后定位变压器

Refer NO.9 replace pcb to open the pcb box and location at transformer

A. 取下中心盒上前盖。

Take down the front cover of main PCB box



变压器的螺丝 the screw fixing the transformer

B. 端子

Slack the screw fixing the transformer, then disconnect all the terminal of transformer, replace a new one

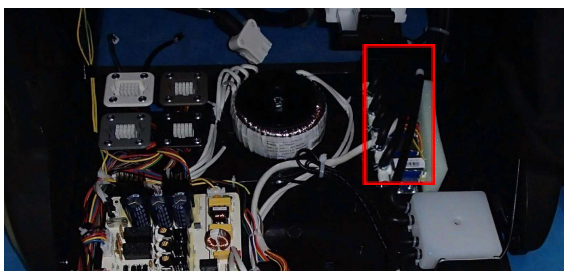
13.泄气阀的更换 **replace the air valve**

参考NO.9 拆开中心盒, 然后定位泄气阀

Refer NO.9 replace pcb to open the pcb box and location at air valve

A. 取下中心盒上后盖

Take down the inner cover of main PCB box



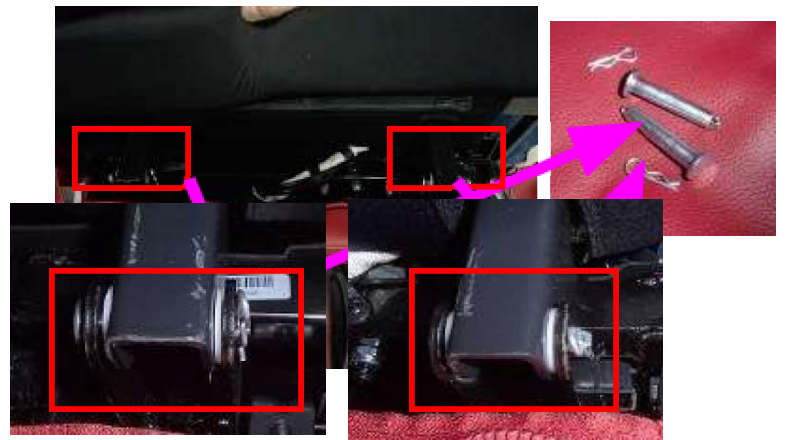
取下固定气阀的四枚螺丝, 拔掉接线端子, 可以更换气阀
Slack and remove the 4 screws, disconnect the terminal of the air valve



14. 小腿的拆卸及内部结构 Disassembly the leg rest

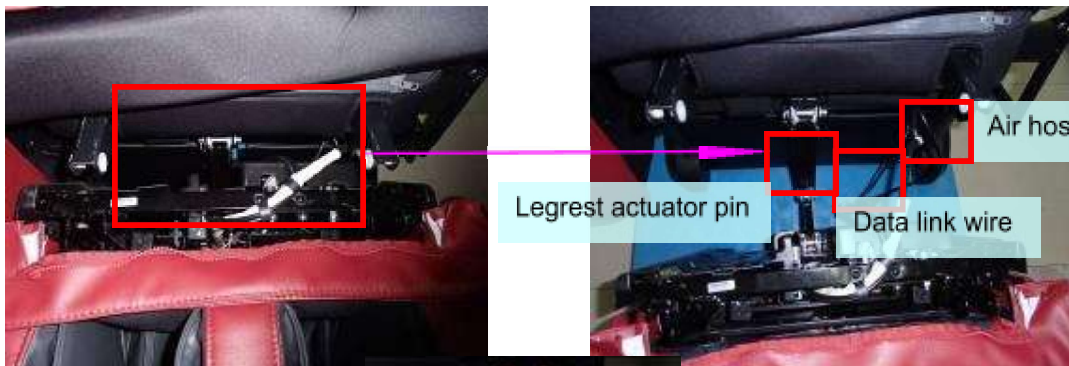
A. 拉开座部与腿部之间的拉练, 拆下固定小腿与座部之间的连接销轴

OPEN zipper on the seat and between of legrest, then find the two pin fix on the seat and legrest

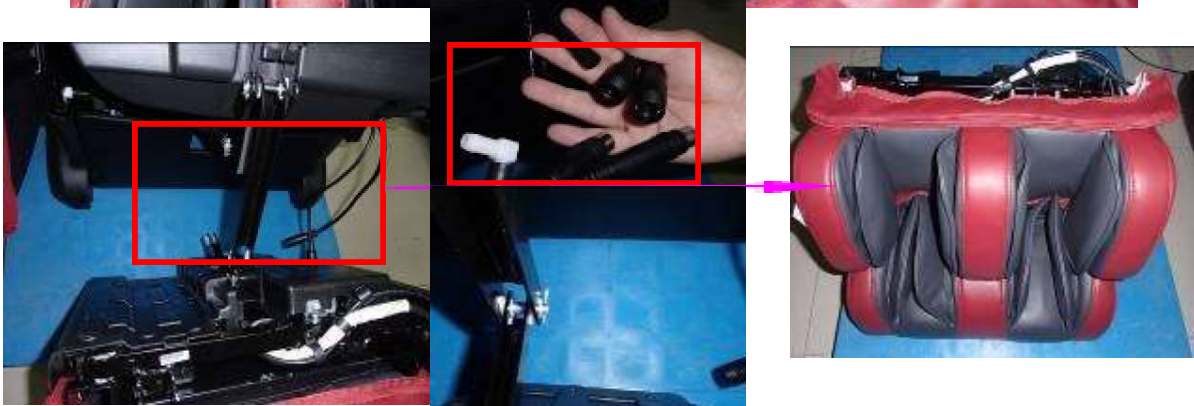


B. 完成A步骤之后, 断开小腿的数据线及气管及小腿推杆的连接销轴即可以分离小腿组件

After step A, disconnect the data link wire and air hose, then take down the pin at the legrest actuator



NEXT:



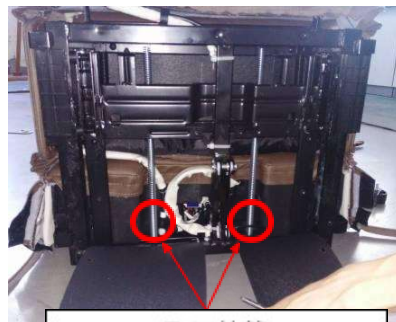
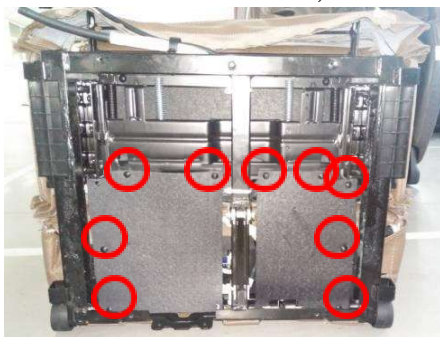


C. 分解内部internal structure

- 1. 如要拆后盖, 请拆除面上的数颗螺丝
Remove the screws at cover if you need

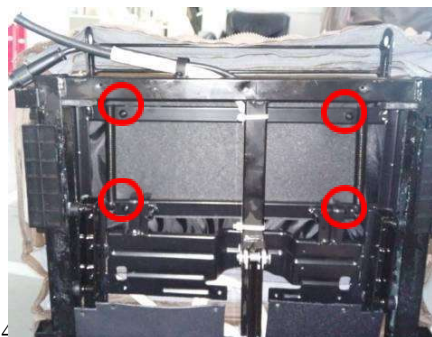


- 2. 取下固定PE板的螺丝, 移开PE板。然后取下拉簧
Remove the PE board, take down the spring.



取下拉簧
take down the spring

- 3. 现在可以伸缩小腿, 并找到固定上小腿底部的四枚长螺丝。取下四枚长螺丝。
Now expand the leg rest, we can find 4 screws fix upper leg rest. Slack and removed them.

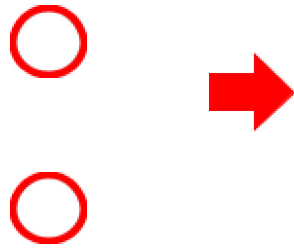


固定上小腿底部4枚螺丝的位置
the position of 4 screws

固定上小腿的2枚螺丝(左右各2枚)

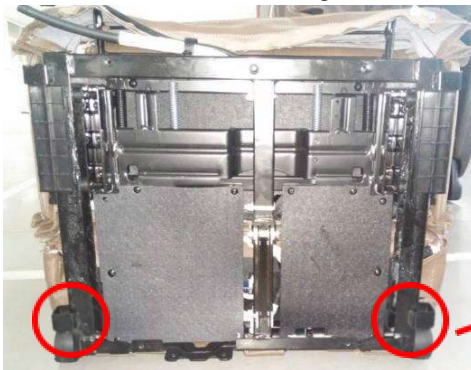
Unzip the zipper on both side of upper leg rest, slack and removed 2 screws (2 screws on both side)





5. 现在我们可以更换外套上小腿或上小腿气袋。
Now we can replace the upper leg rest leather or air bag

6. 取下小腿滚轮。
Take down the wheel of leg rest



7. 取下小腿脚垫并取下底部皮套
Take down the mats and removed the bottom leather



8. 取下PE板
Take down the PE board



9.取下固定上小腿的螺丝。

Slack and removed the screws fix lower leg rest



10.移出下小腿, 现在可以更换外套下小腿或下小腿气袋或小腿气阀

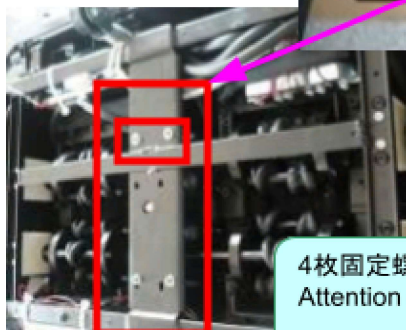
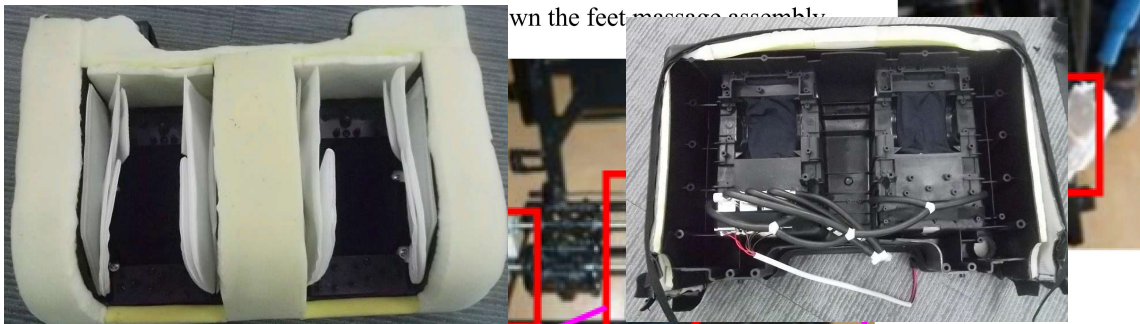
Remove lower leg rest, now we can replace lower leg rest leather or air bag or air valve

D. 分离上下小腿皮套后, 可以清晰的看到脚底滚轮组件

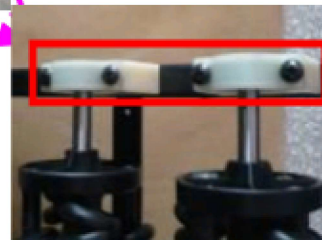
After remove the legrest(UP/DOWN PART),then you can see picture of below:

移除这些螺丝后, 你就可以拿下脚轮组件了

Remove these screws, you can take down the feet massage assembly



4枚固定螺丝
Attention 4PCS screws



两侧共8枚固定螺丝
Attention 8PCS screws of two sides

附: 实物接线图 The physical wiring diagram

