

产品维修手册

Maintenance Service Manual

产品型号/Model: EI-8602A-TIT

适用电压规格/ Voltage Specification: 110-120V~

蒙发利集团·客服

By the Easepal's Customer Service Dept.

Catalogue

1.Fault code list -----	3-4
2.List of tools to use -----	5
3.Cloak replacement -----	6
4.Replacement of flannelette in backrest -----	7
5.Movement disassembly-1 -----	8
6.Movement replacement -2 -----	9
7.Movement replacement -3 -----	10
8.Remove the back cover -----	11
9.Replacement of upper cover of central box -----	12
10.Remove side plate -----	13
11.calves replacement-----	14
12.Movement backrest bus disassembly -1 -----	15
13.Movement backrest bus disassembly -2-----	16
14.Movement backrest bus disassembly -3-----	17
15.Gas pump replacement -----	18
16centre plate、 transformer、 Fuse replacement -----	19

Fault code list



open: (1) Under the condition of shutdown, At the same time, hold down the three keys pointed to by the arrow, and you will hear a beep of the hand controller in a few seconds.
 (2) Select one of the two project patterns shown in the following figure as needed

Status , indications

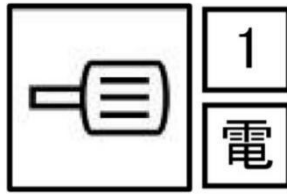
Fault numbe	Fault description	Possible cause	Exclusion method	remarks
1	The hand controller button was pressed for more than 45s without letting go	Button stuck	1. Check the status of each button carefully 2. Replace the hand controlle	
2	The hand controller does not communicate with the center board for more than 4s	Bad contact or fracture of inserting wire	1. Check or replace the plug-in cable 2. Replace the hand controlle 3. Replace the center board	
3	The movement plate does not communicate with the center board for more than 4s	Bad contact or fracture of inserting wire	1. Check or replace the plug-in cable 2. Replacement of movement board 3. Replace the center board	
40	The position sensor is abnormal of the Movement walking moto	1. The position sensor is broken	1. Replacement of sensors 2. Check the connection 3. Replacement of movement board	(1) Detection when function is turned on (2) Shut down automatically in the event of failure time. And not allowed to boot.
41	Position coding anomaly of the Movement walking moto, That is ,the code disk is in the incorrect position.	1. The position sensor is broken 2. Movement overshoot	1. Replacement of sensors 2. Move the movement to the initial height position 3. Replacement of movement board	(1) real-time detection (2) Shut down automatically in the event of failure time. And not allowed to boot.

42	Abnormal speed senso of the Movement walking moto, That is ,no change of speed code disk was detected in excess of 6S.	1. The motor is broken or blocked 2. Drive circuit device damage	1. Check the connection between the motor and the movement board 2. Check or replace moto 3. Replacement of movement board	(1) Detection when function is turned on (2) Shut down automatically in the event of failure time. And not allowed to boot.
44	the position sensor is abnormal of Core kneading moto. That is, no change of position code disk is detected over 10S.	1. The position sensor is broken 2. The motor is broken or blocked 3. Drive circuit device damage	1. Check the connection between the sensor and the movement board 2. Replacement of sensors 3. Check or replace moto 4. Replacement of movemetn board	(1) Detection when function is turned on (2) Shut down automatically in the event of failure time. And not allowed to boot.
46	Abnormal speed senso of Core kneading moto, That is, more than 6S did not detect the speed code disk change.	1. The motor is broken or blocked 2. Drive circuit device damage	1. Check the connection between the motor and the movement board 2. Check or replace moto 3. Replacement of movement board	(1) Detection when function is turned on (2) Shut down automatically in the event of failure time. And not allowed to boo.
49	The position code of the telescopic airbag of the machine unit is abnormal.	1. The position sensor is broken	1. Check the connection between the sensor and the movement board 2. Replacement of sensors 3. Replacement of movement board	(1) Detection when function is turned on (2) Shut down automatically in the event of failure time. And not allowed to boot.
54	The position of the Core kneading moto is Narrow anomaly in wide position	1. The position sensor is broken 2. The motor is broken or blocked 3. Drive circuit device damage	1. Check the connection between the sensor and the movement board 2. Replace the senso 3. Check or replace moto 4. Replace the movement board	(1) Detection when function is turned on (2) Shut down automatically in the event of failure time. And not allowed to boot.
59	The count sensor is abnormal of the Backrest push rod.	1. Count sensor bad 2. Connection anomaly 3. The motor is broken or blocked 4. Drive circuit device damage	1. Check the connection 2. Check or replace the push rod 3. Replace the center board	(1) Detection when function is turned on (2) Shut down automatically in the event of failure time. And not allowed to boot.
63	The count sensor is abnormal of the Calves push rod	1. Count sensor bad 2. Connection anomaly 3. The motor is broken or blocked 4. Drive circuit device damage	1. Check the connection 2. Check or replace the push rod 3. Replace the center board	(1) Detection when function is turned on (2) Shut down automatically in the event of failure time. And not allowed to boot
68	When calves stretch out and draw back, the count sensor is abnormal.	1. Count sensor bad 2. Connection anomaly 3. The motor is broken or blocked 4. Drive circuit device damage	1. Check the connection 2. Check or replace the push rod 3. Replace the center board	(1) Detection when function is turned on (2) Shut down automatically in the event of failure time. And not allowed to boot

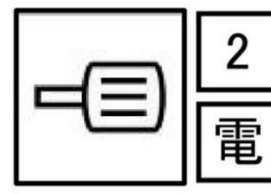
Tools List



Diagonal Cutter



Electric Screw Driver



Electric Screw Driver



Cable Ties



Cross Batch
2*6.35*65



Slot Type Screwdriver
2*6.35*100



Screwdriver

Cloak replacement

1. Pass through the zipper head with a small Cable Ties and pull it apart (figure 1), as shown in figure 2 after opening at 7th position



图 1



图 2

2. Put on the new cloak and zip up 7th position zippers as shown in figure 3 below



图 3

Replacement of flannelette in backrest

1. Press P6 to remove the cloak in the first step

2. Open 4 zippers of flannelette according to figure 1



图 1

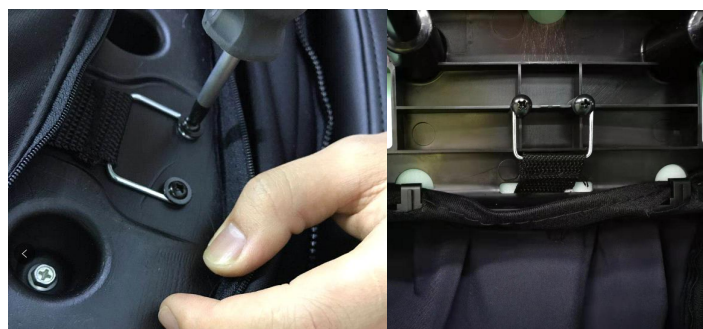


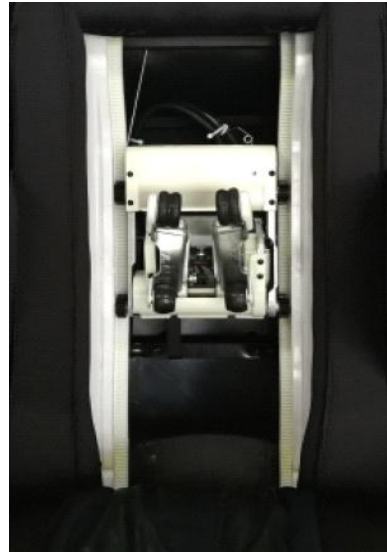
图 2

3. Remove the two screws behind the back and the two screws under the pedestal As shown in figure 2

4. Replace the new flannelette with the steps in figure 2 and figure 1 to return to the operation.

Remove of the Movement -1

Press P7 step 1 / 3 to remove the cloak and flannelette



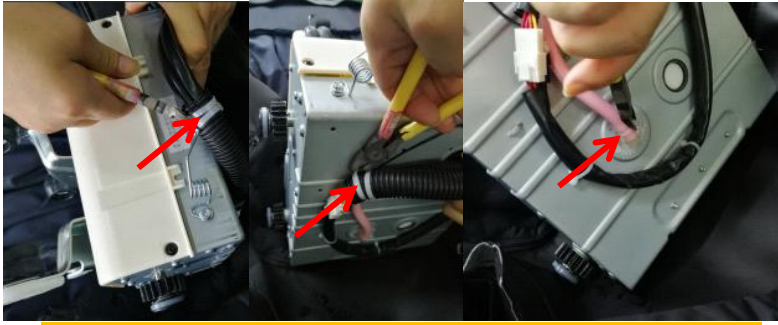
2. Use a screwdriver to revolve the worm through the repair hole to move the machine core away from the guideway to remove the baffle area, If the machine core does not block the baffle area of the guideway, jump directly to the next step.

3. Remove the baffle from the left and right guideway with a screwdriver, Move the machine core to the position of the left and right guideway disassembly baffle

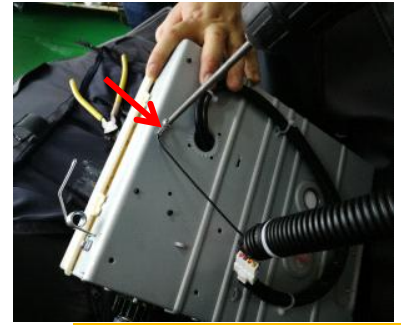


4. The walking gear comes out first and the front gear comes out again.

Remove of the movement -2



5. Cut off the Cable Ties in the three positions shown in figure 3 with Diagonal Cutter



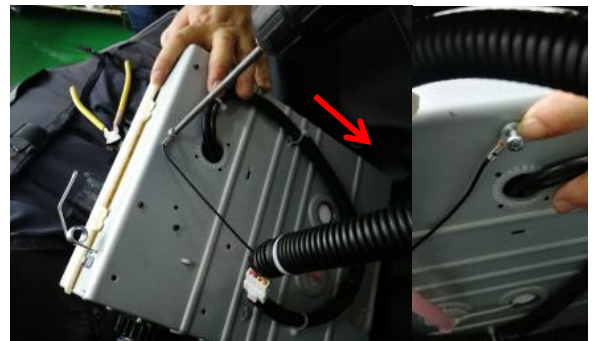
6. Remove the earth wire of the machine core



7. Pull out the trachea and terminal



8. Connect the trachea to the terminal with a new machine core

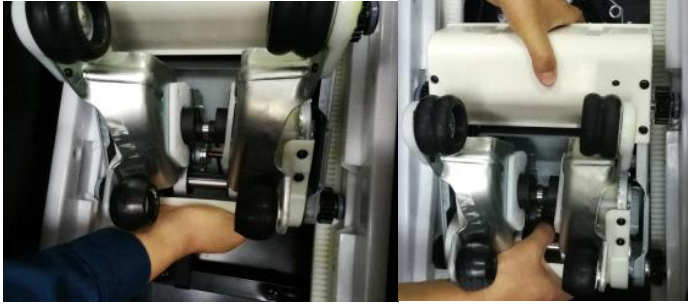


9. Lock the earth wire to the machine core



10. Tie a Cable Ties on the trachea and dorsal rack line

Remove of the movement -3



11. The front gear is advanced, and the walking gear is re-entered.



12. The screwdriver removes the machine core away from the baffle area of the left and right guideway through the repair hole



13. install the Remove baffle of the left and right guideway on the guideway



14. Pass the inverted hook through the elastic cloth and lock the 2 screws



15. Pull 4 zippers.

Remove the back cover

1. Run the massage chair to its original state, and then cut off the power supply.

2. Pull out the cloth pin on the back cover vertically as shown in figure 1 and remove the four screws in figure 2.

3. Press down, pull the back cover backward and pull out a certain angle, and then pull it out toward the top of the slope, as shown in figure 4.

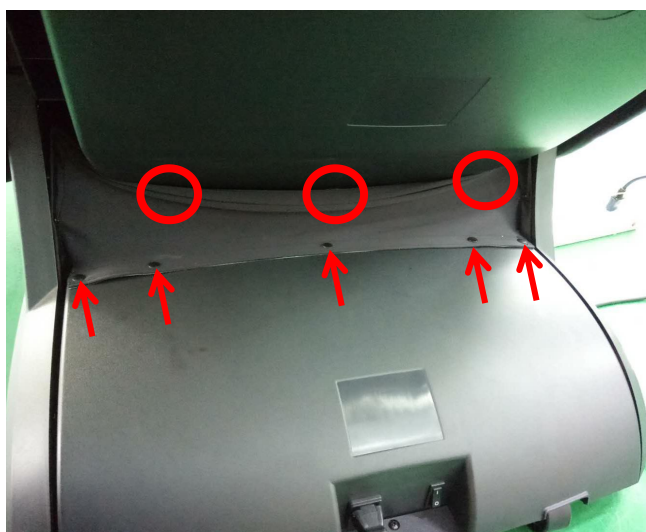


图 1



图 2



图 3

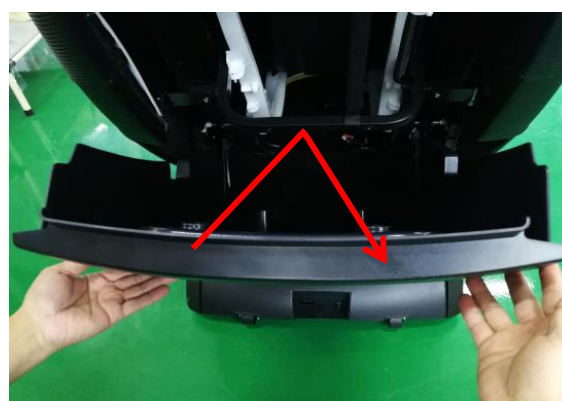


图 4

Replacement of upper cover of central box

- 1.Run the massage chair to the initial state, then cut off the power supply and unplug the plug;
- 2.Pull out 5 cloth pins in turn perpendicular to the direction of the upper cover, as shown in figure 1;
- 3.Remove the screws as shown in figures 2 and 3
- 4.Hold the inner side of the top cover of the center box on the left hand, hold the outer edge of the upper cover on the right hand, gently drag it out and remove the upper cover, as shown in figure 4

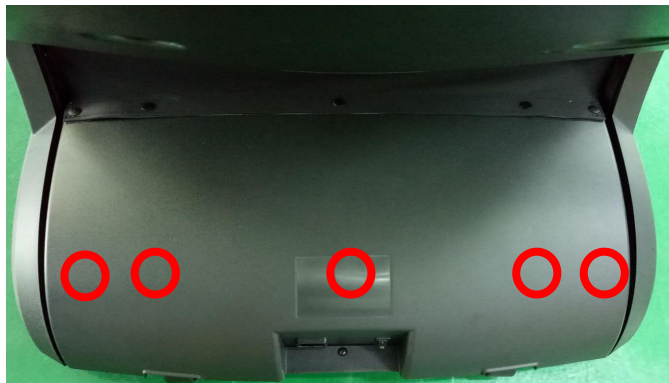


图 1



图 2

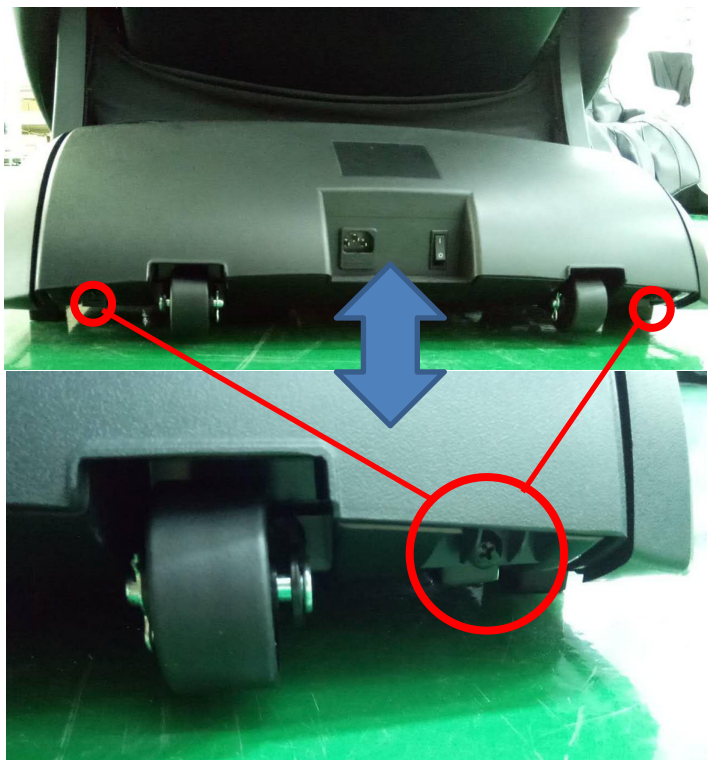


图 3

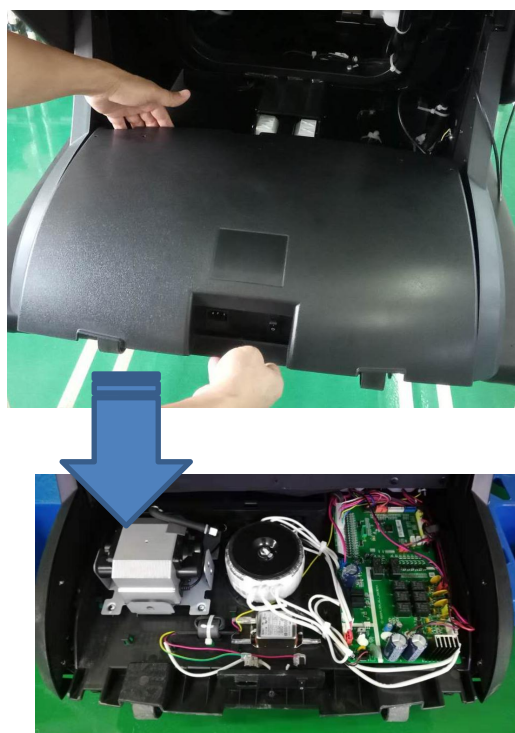


图 4

Remove side plate

1. Run the massage chair to its original state, then cut off the power supply and unplug it;
2. Press P11 to remove the rear cover and cut the inner band of the lower cover with oblique pliers, as shown in figure 1;
3. Cut off the tie belt that binds the hand controller to the side board, as shown in figure 2
4. Remove the two screws on the back rack, as shown in figure 3;
5. Unzip the shoulder air bag and remove the air bag screw with a screwdriver, as shown in figure 4;
6. Connect the power supply, run the massage chair to the back state, remove the screw at the front end of the side plate from below the calves as shown in figure 5, and then run the massage chair to the initial state and cut off the power supply
7. Lift the back end of the side plate slightly upward so that the upper connecting piece hook is detached from the back frame slot hole as shown in figure 6;
8. Lift the front end of the side plate up 20 × 30 mm so that the side plate hook is detached from the back frame as shown in figure 8.
9. Remove three connecting trachea from the side plate, as shown in figure 8.



图 1



图 2

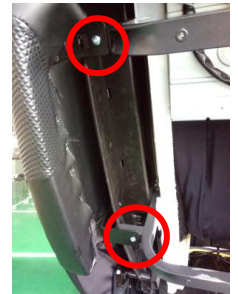


图 3



图 4



图 5

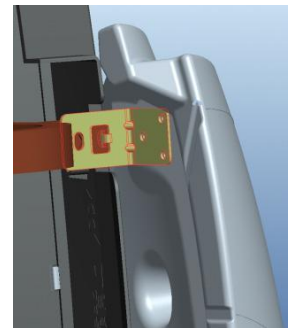


图 6

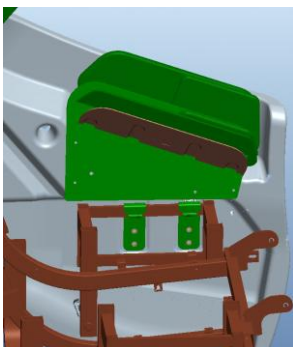


图 7



图 8

Replacement of calves

1. Unzipper as shown in figure 1;

2. Break the DK Card bolt open with your fingers or pliers and take it up, as shown in figure 2;

3. Remove the trachea and power cord connector, as shown in figure 3



图 1



图 2



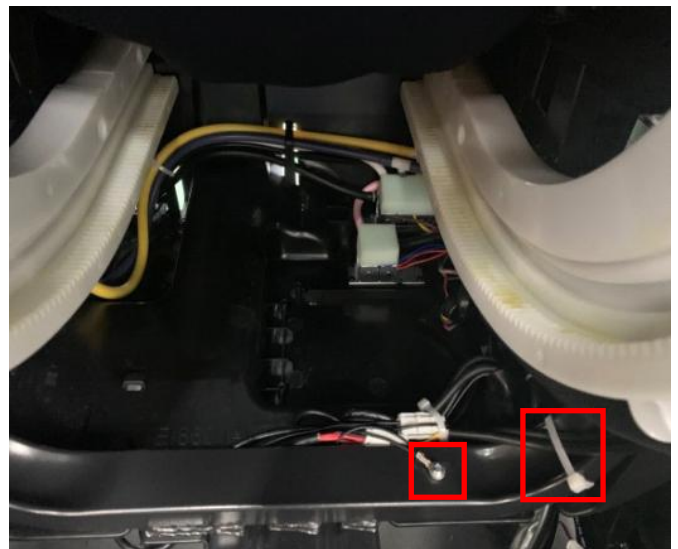
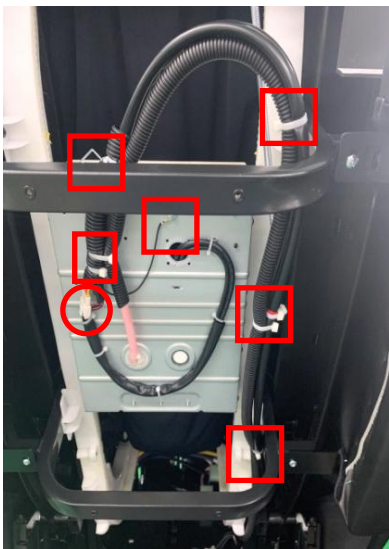
图 3

Movement backrest bus disassembly -1

1. Adjust the center position of the Movement Backrest center position through the maintenance hole through the screwdriver for removing the cloak and velvet through P7 step 1 / 3;



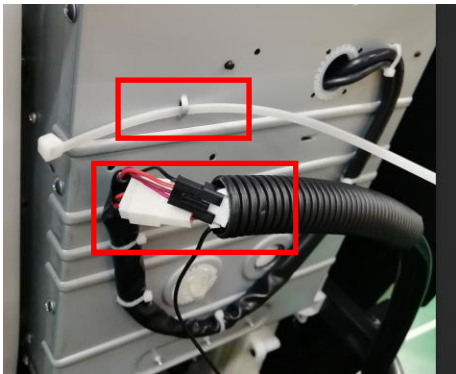
2. Press P11 to remove the rear cover, cut off the tie tape shown in the figure below, pull out the terminal shown in the figure below and remove the earth wire terminal;



3. Pull out the docking terminal of the back frame of the lower cover of the seat and remove the backrest bus, as shown in the following figure.

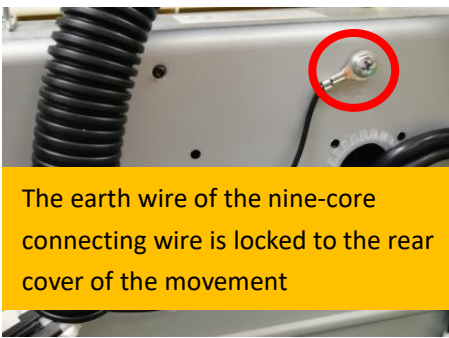


Movement backrest bus disassembly -2



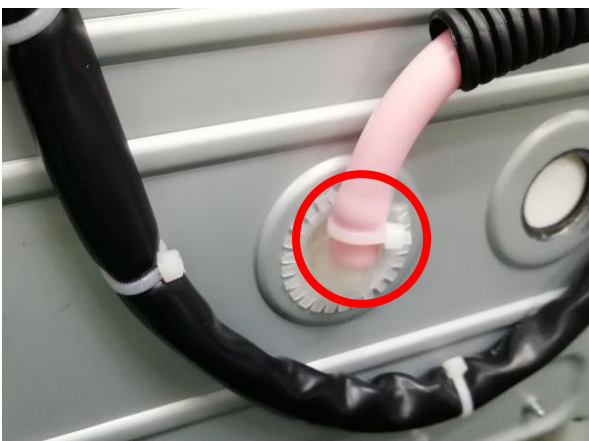
The nine-core connecting wire is connected with the movement, and the tape is pierced into the card slot.

图 1



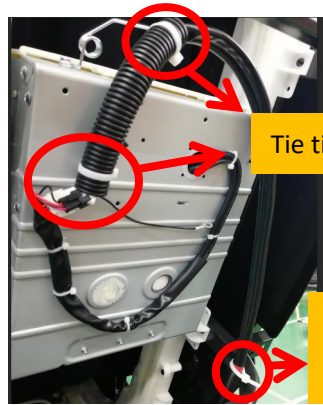
The earth wire of the nine-core connecting wire is locked to the rear cover of the movement

图 3



Connect the air duct assembly of the lower cover of the seat to the movemet, The trachea is inserted with alcohol, and the tie is fixed

图 5



Tie tight in two places

The reserved position here is not tight.

图 2

Fastening of core spring and nine-core connecting wire (3 places)



Pull spring of walking wire with lock

图 4



One end of the tension spring is attached to the head cover ST5*10



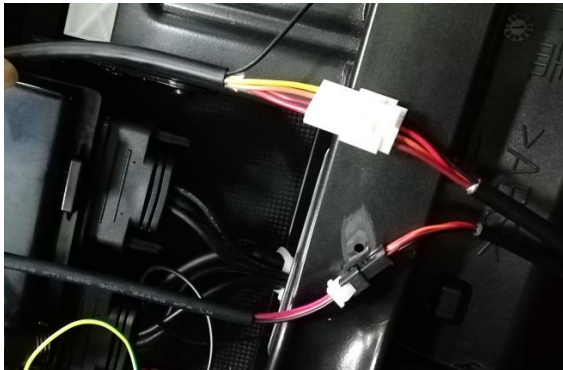
One end of the spring is pierced into the buckle and fixed with the reserved band.



Band fixation (7 places)



Movement backrest bus disassembly -3



The nine-core connection line is connected to the 32 core wire.

图 7



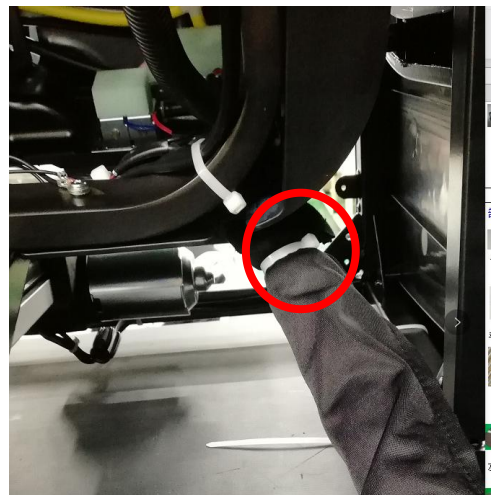
Nine-core connecting wire and 32 core wire earth wire with lock

图 9



Straighten the line, tie the belt and fix it.

图 8



Cloth cover tie belt fixation

图 10

Gas pump replacement

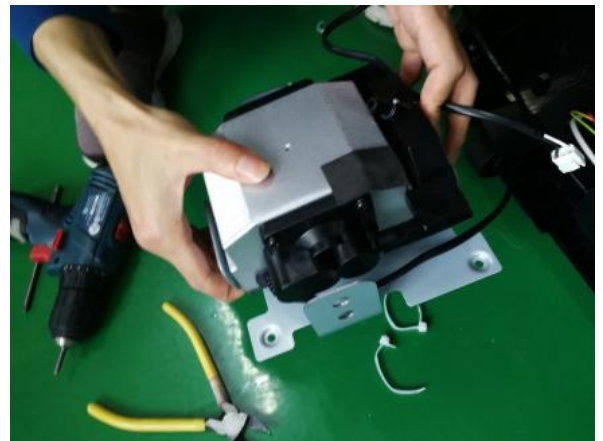
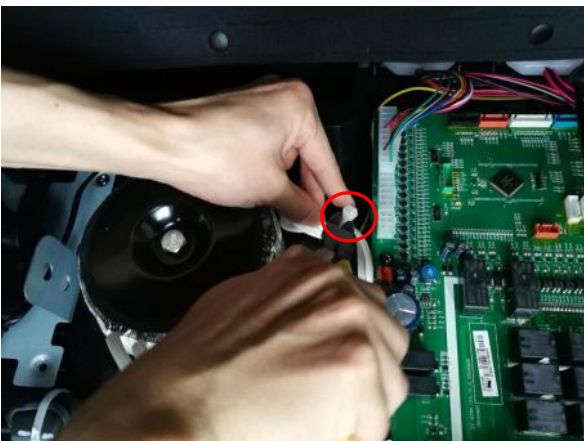
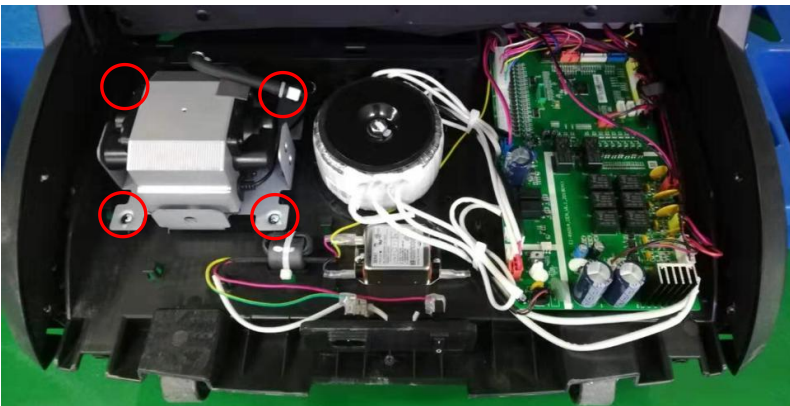
1.Remove 5 cloth sleeve pins on the top cover of the central box



2.Remove 3 screws

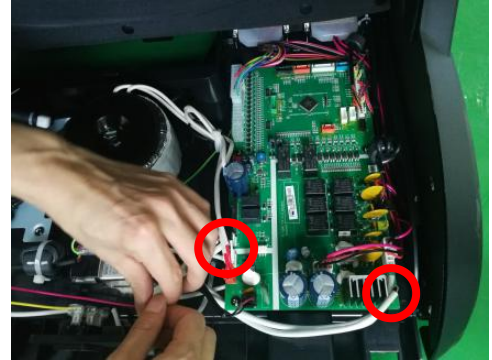


3.Remove 4 screws of the air pump and cut off the bandage so that you can take it out and replace it.

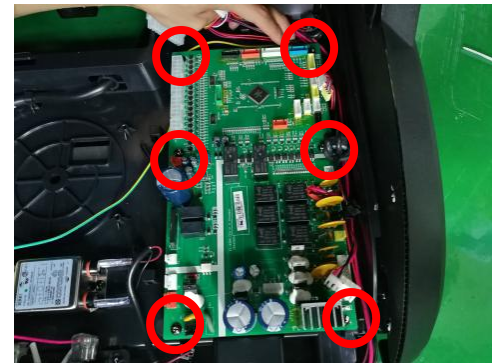
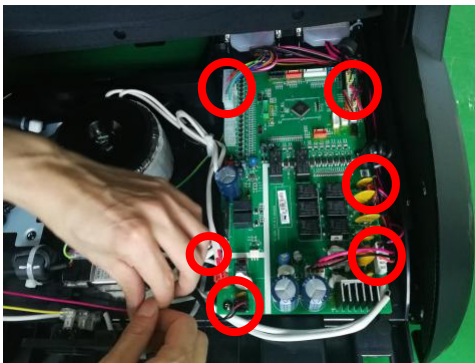


centre plate、 transformer、 Fuse replacement

1. Transformer replacement: Cut the tie、 Unplug the terminal、 Remove the fixing screw from the transformer、 Remove transformer



2.Center plate replacement: Unplug the terminal from the center board, Remove 6 screws, That is, the center board can be removed



3.Fuse replacement: Remove insurance from socket, You can replace the fuse.

