
FUJIAN YIHE ELECTRONICS CO.,LTD

Maintenance Service Manual

Factory mode	YH-7235	YH-7231	YH-7232	YH-7236
Sku#	AM-R7 LE	Ti Regal	Ti Royale	TI H7
Picture				

Voltage Specification:110~120V/60Hz

I. Trouble List

Common Troubles and Maintenance Methods are listed as below:

表格

Trouble No.	Phenomenon	Description	Maintenance Method
01	No function	<p>A. Controller no response:</p> <ul style="list-style-type: none"> ① Fuse melts (in the Power Source Box and main PCB) ② Power supply circuit poorly connected ③ POWER PCB failed ④ Main PCB failed <p>B. Controller responsive:</p> <ul style="list-style-type: none"> ① Up or Down Stroke Photoelectricity failed ② Main PCB failed ③ Kneading all the time from power on and no response with other buttons 	<p>A.</p> <ul style="list-style-type: none"> ① Replace Fuse ② Replace Power Box ③ Replace POWER PCB ④ Replace main PCB <p>B.</p> <ul style="list-style-type: none"> ① Replace stroke photoelectricity ② Replace main PCB ③ Replace Width Inspection Board (caused by faulty width inspection board)
02	The Width switchover isn't available	<ul style="list-style-type: none"> ① The terminals of Width Inspection on main PCB with wires were poorly connected ② The terminals of Width Inspection on mechanical core with wires were poorly connected ③ Width Inspection Board failed ④ Main PCB failed 	<ul style="list-style-type: none"> ① & ② Plug the terminals well or replace the wires ③ Replace Width Inspection Board ④ Replace the main PCB
03	NO Rolling	<ul style="list-style-type: none"> ① Terminals or Wire poorly connected ② UP/ Down-stroke Photoelectricity Subassembly Failed ③ Rolling Motor Failed ④ Main PCB failed 	<ul style="list-style-type: none"> ① Plug the terminal well or replace the wires ② Replace UP/Down-Stroke Subassembly ③ Replace gear box ④ Replace main PCB
04	No kneading	<ul style="list-style-type: none"> ① The terminals on main PCB and wires are poorly connected ② Kneading motor failed ③ Main PCB failed 	<ul style="list-style-type: none"> ① Plug the terminal well or replace the wires ② Replace gear box ③ Replace main PCB

Trouble No.	Phenomenon	Description	Maintenance Method
05	No tapping	① The terminals on main PCB and wires are poorly connected ② Tapping motor failed ③ Main PCB failed	① Plug the terminal well ② Replace gear box ③ Replace main PCB

II. Troubleshooting Process

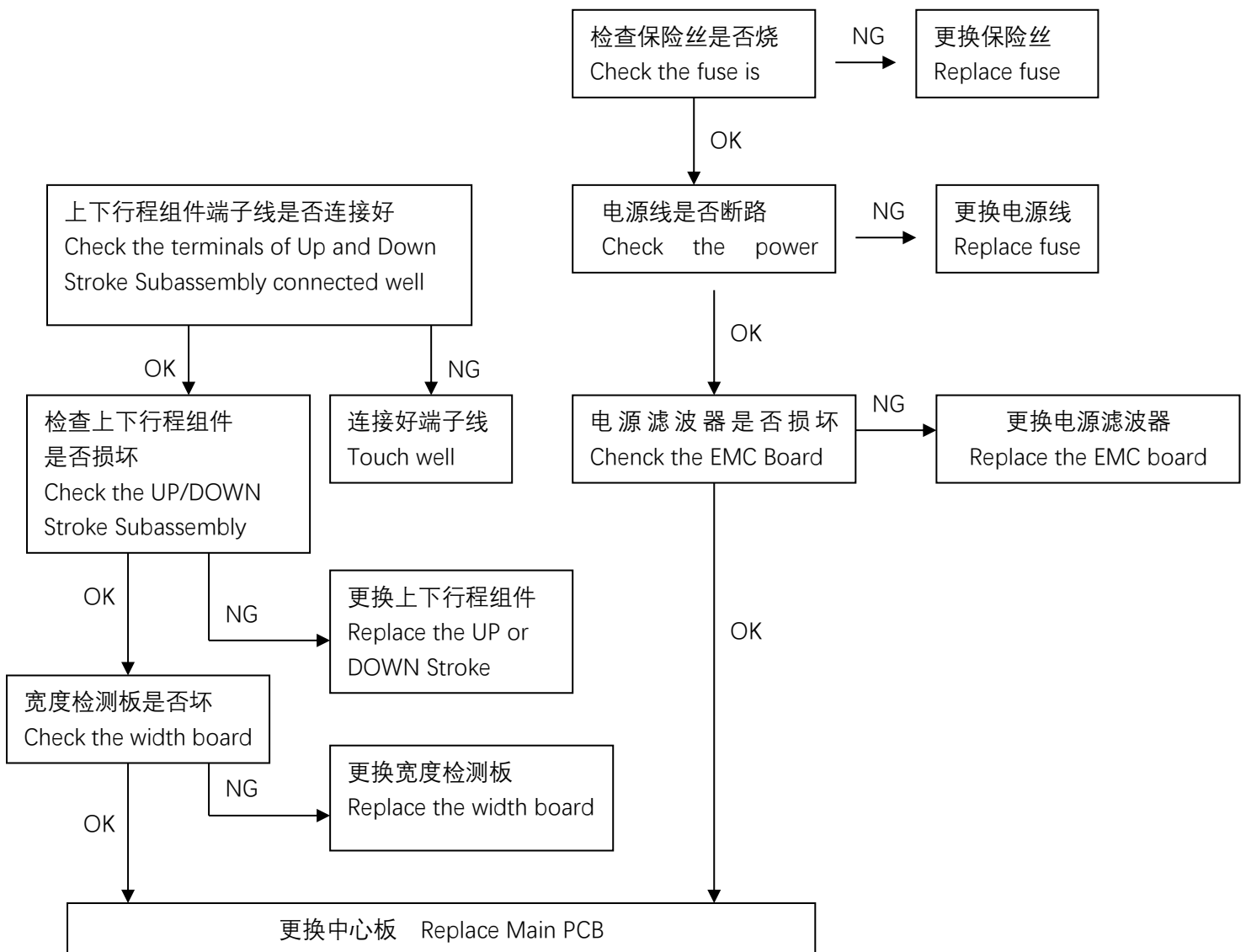
Notes for repairing chair or replacing parts

A. Make sure the power is off when you tear down the wires, move terminals or replacing parts.

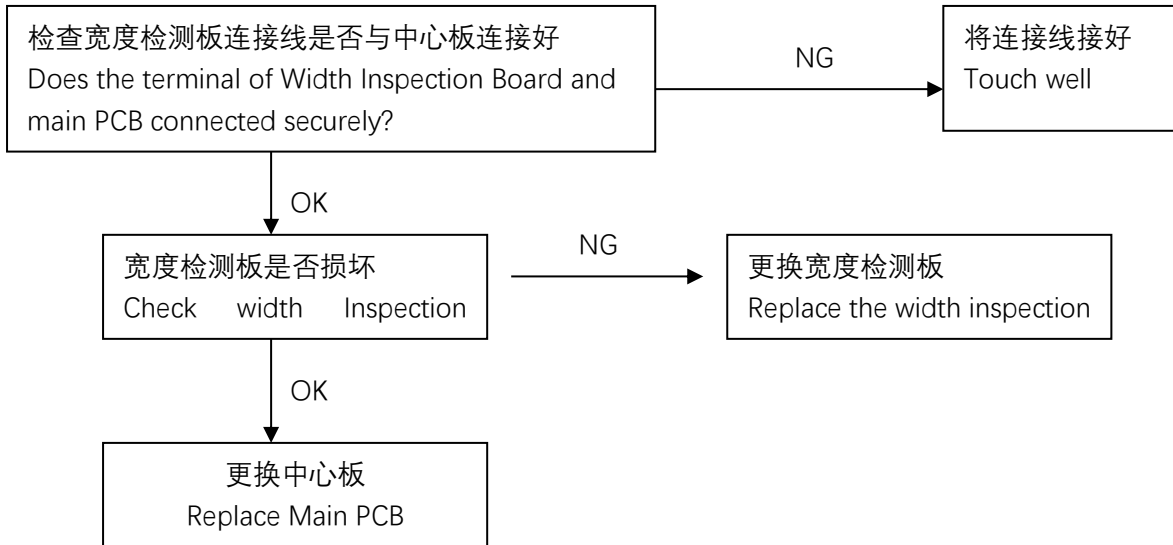
B. The semiconductors (like IC or something else) will easily be damaged by static.

So you touch the PCB before, please make sure your body is connected with the ground.

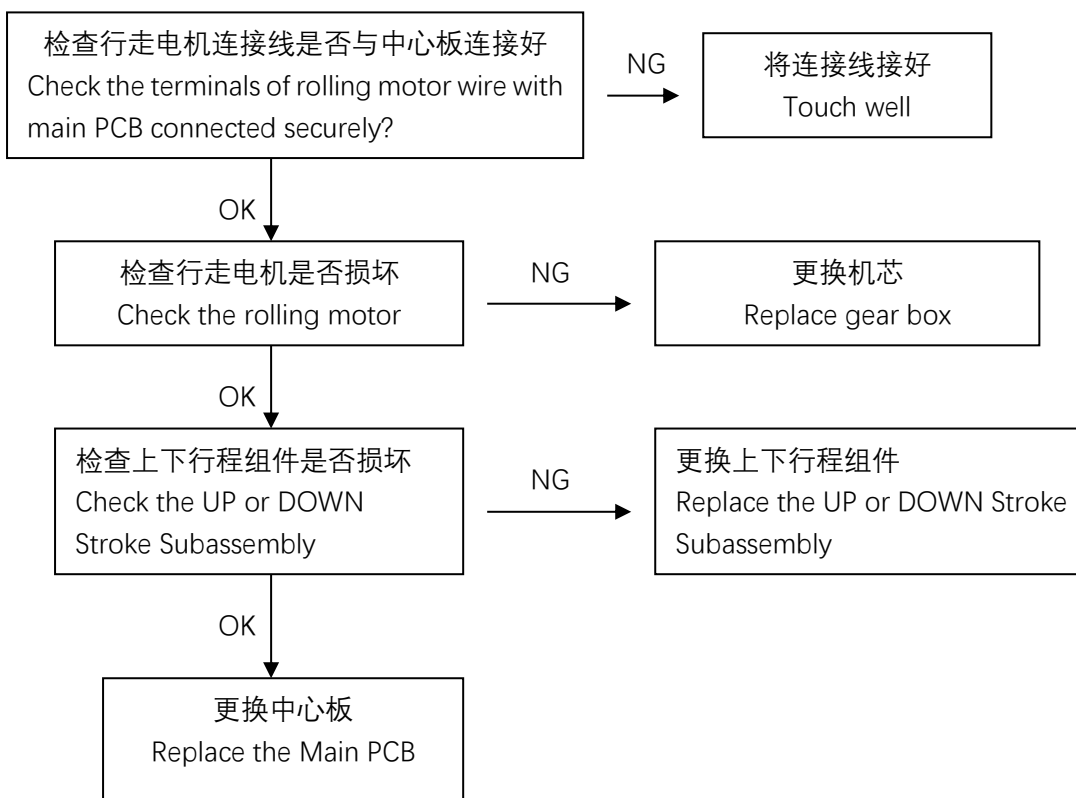
1、开机无功能/ No function



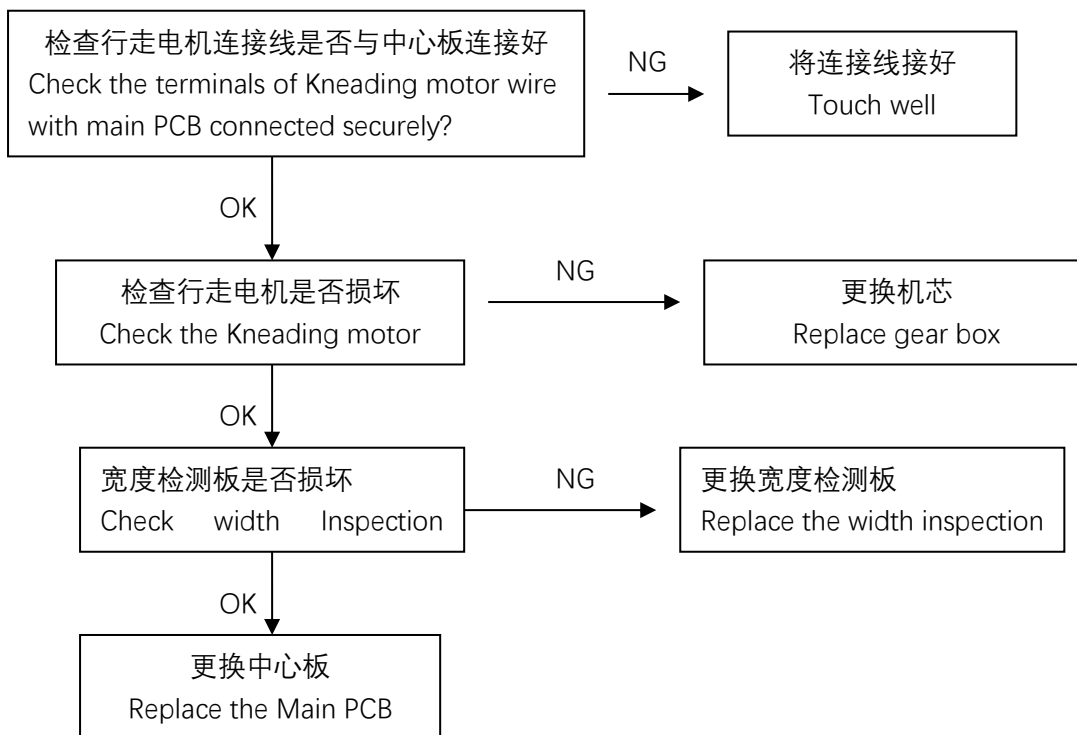
2、机芯宽中窄不能切换 No width switchover



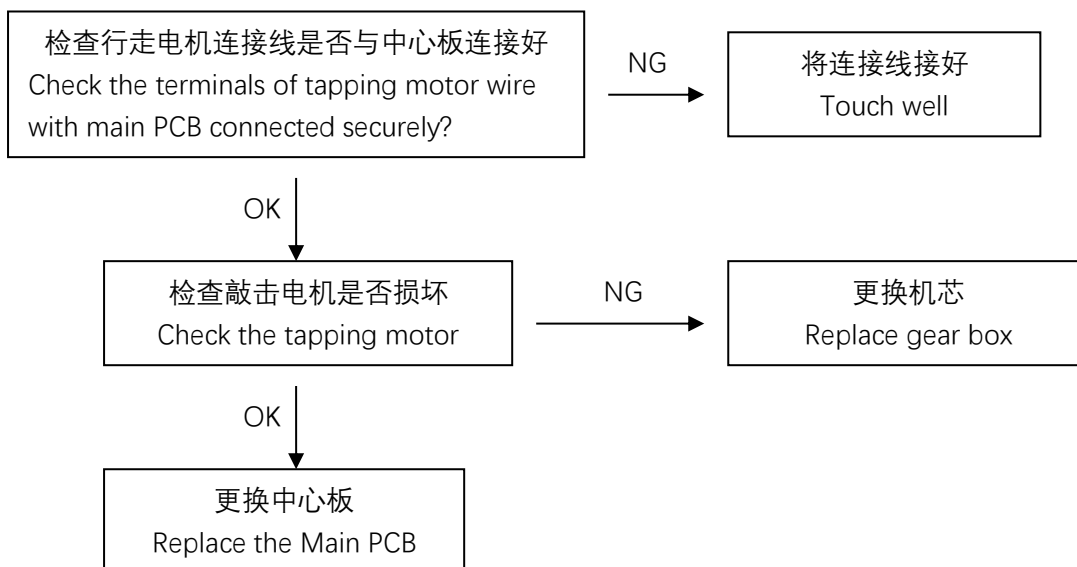
3、不行走/ NO ROLLING



4、不揉捏/ NO KNEADING



5、不敲击/ NO TAPPING



工具列表 Tools List

			
<p>十字螺丝刀 Screwdriver size 1,2,3</p>	<p>老虎钳 尖嘴钳 Diagonal cutter and long nose pliers</p>	<p>斜口钳 Diagonal pliers</p>	<p>扳手 Spanner tools Kit</p>
			
<p>电笔 Test pen</p>	<p>六角扳手 Allen Key set</p>	<p>内六角扳手 Ratchet Tools Set</p>	<p>24V/DC 电源 24V/DC power</p>
			
<p>电动螺丝刀 Electric Driver</p>	<p>90 度弯头电动螺丝刀</p>	<p>扎扣 Cable Ties</p>	<p>压线帽 WIRE ONECTORS</p>

Table of Contents

1. Disassembly and Replacement of Calf Rest 8
2. Disassembly and Replacement of Cape 8
3. Disassembly and Replacement of Main PCB, Power PCB, Air Pump, Air Valve in Central Box 9
4. Disassembly and Replacement of Side Panels 11
5. Disassembly and Replacement of Upper and Lower Assemblies of Mechanical Core 12
6. Disassembly and Replacement of Seat Mechanical Core 13
7. Disassembly and Replacement of Backrest Push Rod 14
8. Disassembly and Replacement of Hand Controller 15

1. Disassembly and Replacement of Calf Rest

1-1 Lift the seat cushion up (Figure 1). There is one cotter pin on each left and right side of the calf rest (Figure 2). Remove the two cotter pins with long nose pliers (Figure 3) to separate the calf rest from the seat frame.



Figure 1

Figure 2

Figure 3

1-2 Cut the cable ties fixing the protective cloth cover of the calf rest wiring harness with diagonal pliers and open the protective cloth cover (Figure 4). Unplug the male-female connector of the calf rest power cord and the air pipe interface (Figure 5) to remove the calf rest (Figure 6). Replace the calf rest with a new one if it is damaged.



Figure 4

Figure 5

Figure 6

Note: Reinstall the calf rest by following the above steps in reverse order.

Tools: Long nose pliers, Diagonal pliers.

2. Disassembly and Replacement of Cape and Seat Cushion

2-1 Lift the top end of the cape and unzip it (Figure 7). Lift the bottom right corner of the shawl and unplug the power connection male-female connector (Figure 8) to remove the cape (Figure 9). Replace the cape with a new one if it is damaged.



Figure 7



Figure 8



Figure 9

2-2 Unplug the air pipe connector between the seat cushion and the main unit (Figure 10) to remove the seat cushion (Figure 11).



Figure 10



Figure 11

Note: Reinstall the cape and seat cushion by following the above steps in reverse order.

3. Disassembly and Replacement of Main PCB, Power PCB, Air Pump, Air Valve in Central Box

3-1 Remove the two screws fixing the central box (Figure 12) and lift the central box cover up (Figure 13).



Figure 12



Figure 13

3-2 Unplug all wiring terminals on the main PCB (Figure 14) and remove the two screws fixing the main PCB (Figure 15) to take out the main PCB (Figure 16). Replace the main PCB with a new one if it is damaged.



Figure 14



Figure 15



Figure 16

3-3 Unplug the two male-female terminals on the power PCB (Figure 17) and remove the four screws fixing the power PCB (Figure 18) to take out the power PCB (Figure 19). Replace the power PCB with a new one if it is damaged.



Figure 17



Figure 18



Figure 19

3-4 Cut the cable ties fixing the air pump wiring harness with diagonal pliers, unplug the air pump male-female terminal on the main PCB, remove the four screws fixing the air pump, cut the cable ties fixing the air pipe, and unplug the air pipe connection (Figure 20) to take out the air pump (Figure 21). Replace the air pump with a new one if it is damaged.



Figure 20



Figure 21

3-5 Cut the cable ties fixing the air valve wiring harness with diagonal pliers, unplug the air valve male-female terminal on the main PCB, remove the four screws fixing the air pump, and unplug

the air pipe connection (Figure 22) to take out the air valve (Figure 23). Replace the air valve with a new one if it is damaged.

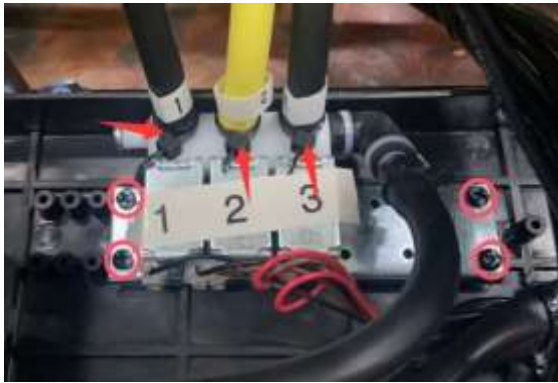


Figure 22



Figure 23

Note: Reinstall the main PCB, Bluetooth PCB, Power PCB, air pump and air valve by following the above steps in reverse order.

Tools: Screwdriver, Diagonal pliers.

4. Disassembly and Replacement of Side Panels (Right Side)

4-1 Remove the four screws fixing the rear cover with a screwdriver (Figure 24) to take off the rear cover (Figure 25).



Figure 24



Figure 25

4-2 Cut the cable ties fixing the Bluetooth speaker power cord with diagonal pliers and unplug the male-female terminal (Figure 26). Cut the cable ties fixing the air pipe with diagonal pliers and unplug the air pipe connector (Figure 27, 28).



Figure 26

Figure 27

Figure 28

4-3 Remove the fixing screws at the rear of the side panel with an Allen Key set (Figure 29).



Figure 29

4-4 Unzip the zippers on both sides of the seat side baffle cloth (Figure 30), lift the baffle cloth (Figure 31), remove the two fixing screws of the right side panel with a screwdriver (Figure 32), and lift the front and rear ends of the right side panel up (Figure 33) to remove the side panel. Replace the side panel with a new one if it is damaged.



Figure 30



Figure 31



Figure 32



Figure 33

Note: When reinstalling the side panel, first hook the lower hook of the side panel on the seat frame and snap the upper hook into the groove, then follow the above steps in reverse order for the rest. The replacement method for the left side panel is the same as that for the right one.

Tools: Diagonal pliers, Screwdriver, External Hexagon Wrench.

5. Disassembly and Replacement of Upper and Lower Assemblies of Mechanical Core

5-1 To disassemble the upper and lower assemblies of the mechanical core, first remove the side panels according to the side panel disassembly process.

5-2 Unplug the male-female terminals of the upper and lower assemblies, remove the screws fixing the upper and lower assemblies with a screwdriver and spanner (Figure 35, 36, 37) to take out the assemblies (Figure 38, 39). Replace the upper/lower assemblies with new ones separately if they are damaged.



Figure 35



Figure 36



Figure 37



Figure 38



Figure 39

Note: Reinstall the upper and lower assemblies of the mechanical core by following the above steps in reverse order.

Tools: Spanner, Screwdriver.

6. Disassembly and Replacement of Seat Mechanical Core

6-1 To disassemble the seat mechanical core, first remove the seat cushion (Figure 40).

6-2 Remove the eight screws fixing the seat oxford cloth with a screwdriver (Figure 41), then lift the oxford cloth up.



Figure 40

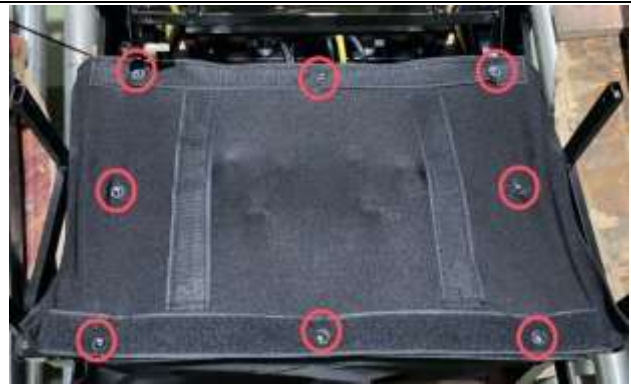


Figure 41

6-3 Remove the four screws fixing the seat mechanical core with a screwdriver (Figure 42) to take out the seat mechanical core (Figure 43).

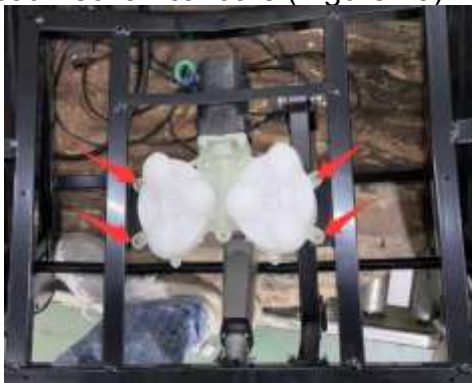


Figure 42



Figure 43

Note: Reinstall the seat mechanical core by following the above steps in reverse order.

Tools: Spanner, Screwdriver.

7. Disassembly and Replacement of Backrest Push Rod

7-1 First disassemble the calf rest according to the calf rest disassembly process, open the Velcro of the front baffle cloth, then loosen the three screws (Figure 44).

7-2 Remove the wave-shaped split pins on both sides of the push rod with long nose pliers and take out the pin shaft (Figure 45) to remove the calf rest push rod (Figure 46). Replace the backrest push rod with a new one if it is damaged.



Figure 44



Figure 45



Figure 46

Note: Reinstall the backrest push rod by following the above steps in reverse order.

Tools: Screwdriver, Long nose pliers, Diagonal pliers.

8. Disassembly and Replacement of Hand Controller

8-1 Under the left side cape of the massage chair (Figure 47), unscrew the male-female connector of the hand controller to remove the hand controller (Figure 48). Replace the hand controller with a new one if it is damaged.



Figure 47



Figure 48