



**EASEPAL®**

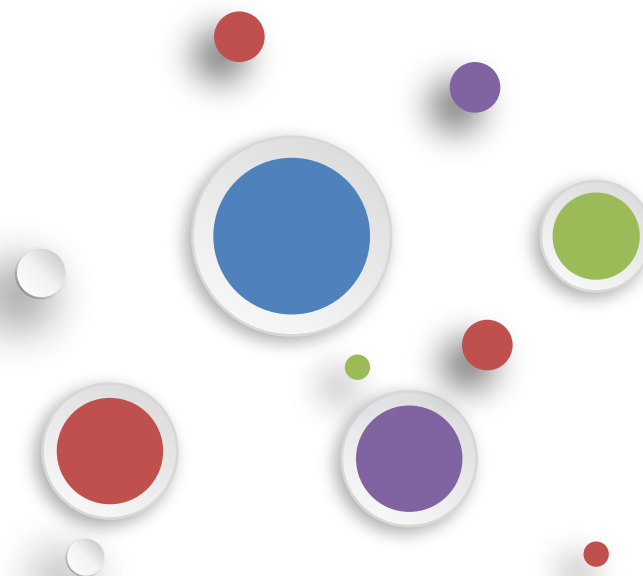
厦门蒙发利电子有限公司客户服务部

## EC-806R massage chair service guide



## Table of Contents

- 一、Product introduction
- 二、Circuit working principle
- 三、Massage chair removal instructions
- 四、Massage chair fault judgment



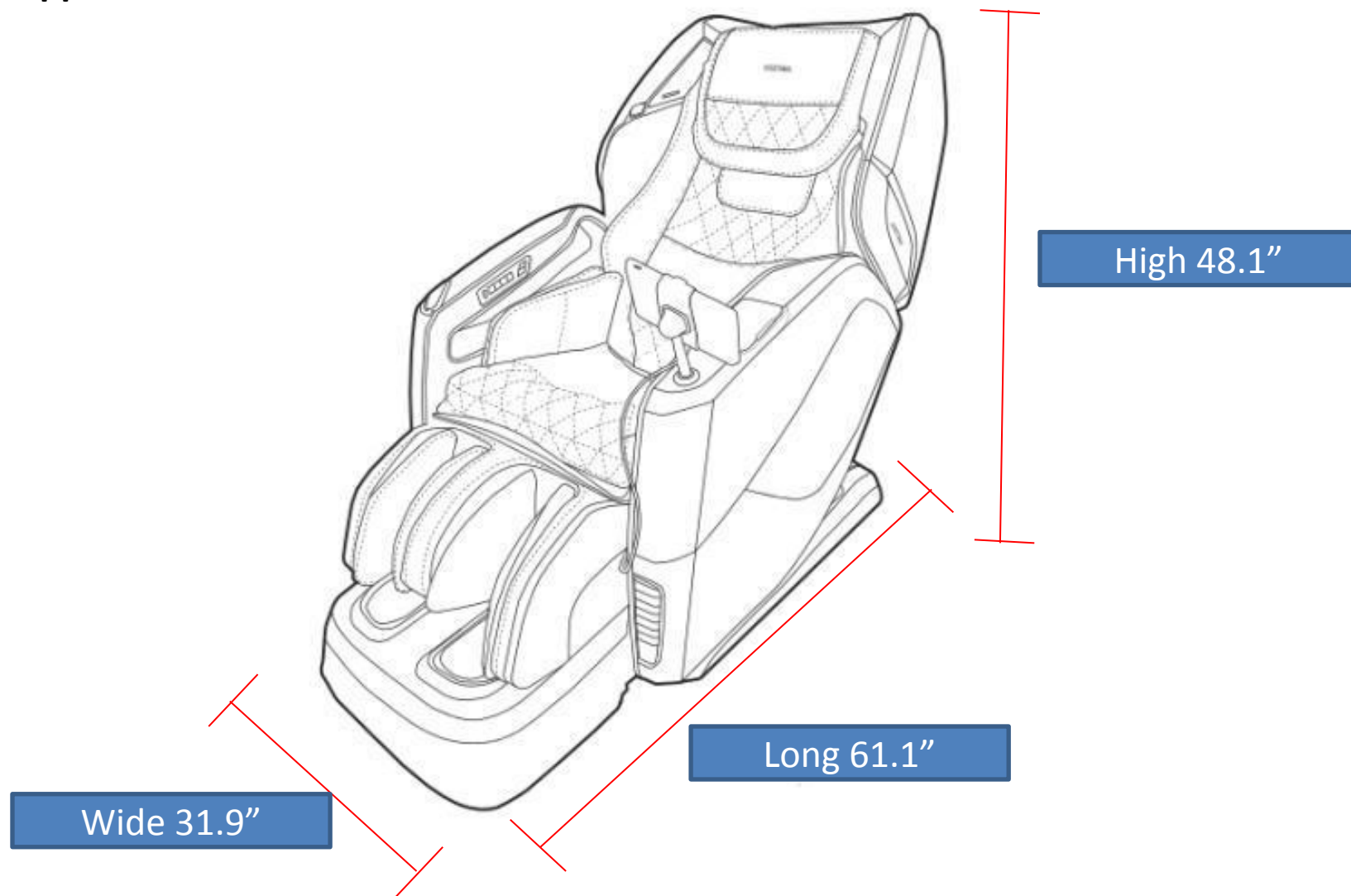


**EASEPAL®**

厦门蒙发利电子有限公司客户服务部

## 一、Product introduction

### 1、Product appearance size :



**EASEPAL®**

厦门蒙发利电子有限公司客户服务部

## 一、Product introduction

### 2、specifications of the products :

Product name		Osaki - 4D Maestro LE 2,0
Rated Voltage		110 -120V 60Hz
Current		1.5A
Working time		15min
Guide		L Shape 52.8"
4D Massage Roller	Forward arc distance	7 Levels Approx 4.96"
	Strength	5 levels
	Speed	5 levels
Airbag	Intensity	5 levels
Angle Adjustment	Backrest	Approx 128°- 155° (Ground Angle)
	Footrest	Approx 9°- 75° (Wall Angle)
size	Upright	61.1" × 31.9" × 48.1"
	Reclined	79.5" × 31.9" × 46.9"
Extension of Footrest		Approx 7.1"
Dimensions of Packing (L*W*H)		BOX 1: 58.5" × 30.7" × 41.7" BOX 2: 43.5" × 14.2" × 30.7" BOX 3: 23.2" × 20.1" × 21.7"
N.W./ G.W.		BOX 1: 163.1lbs/204.1lbs BOX 2: 37.5lbs/46.3lbs BOX 3: 46.3lbs/52.9lbs
Weight of Chair		Approx 246.96lbs
Usage Condition		Environment temperature : "32°F~95°F"
		Contrasting humidity : "20-80RH"
Storage Condition		Storage temperature : "23°F~95°F"
		Storage humidity : "20-80RH"
Maximum body weight of user		260 lbs

## 一、Product introduction

### 2、Appearance of the whole machine:





**EASEPAL®**

厦门蒙发利电子有限公司客户服务部

## 一、Product introduction

### 2、Appearance of the whole machine:

Air Bags Massage Position





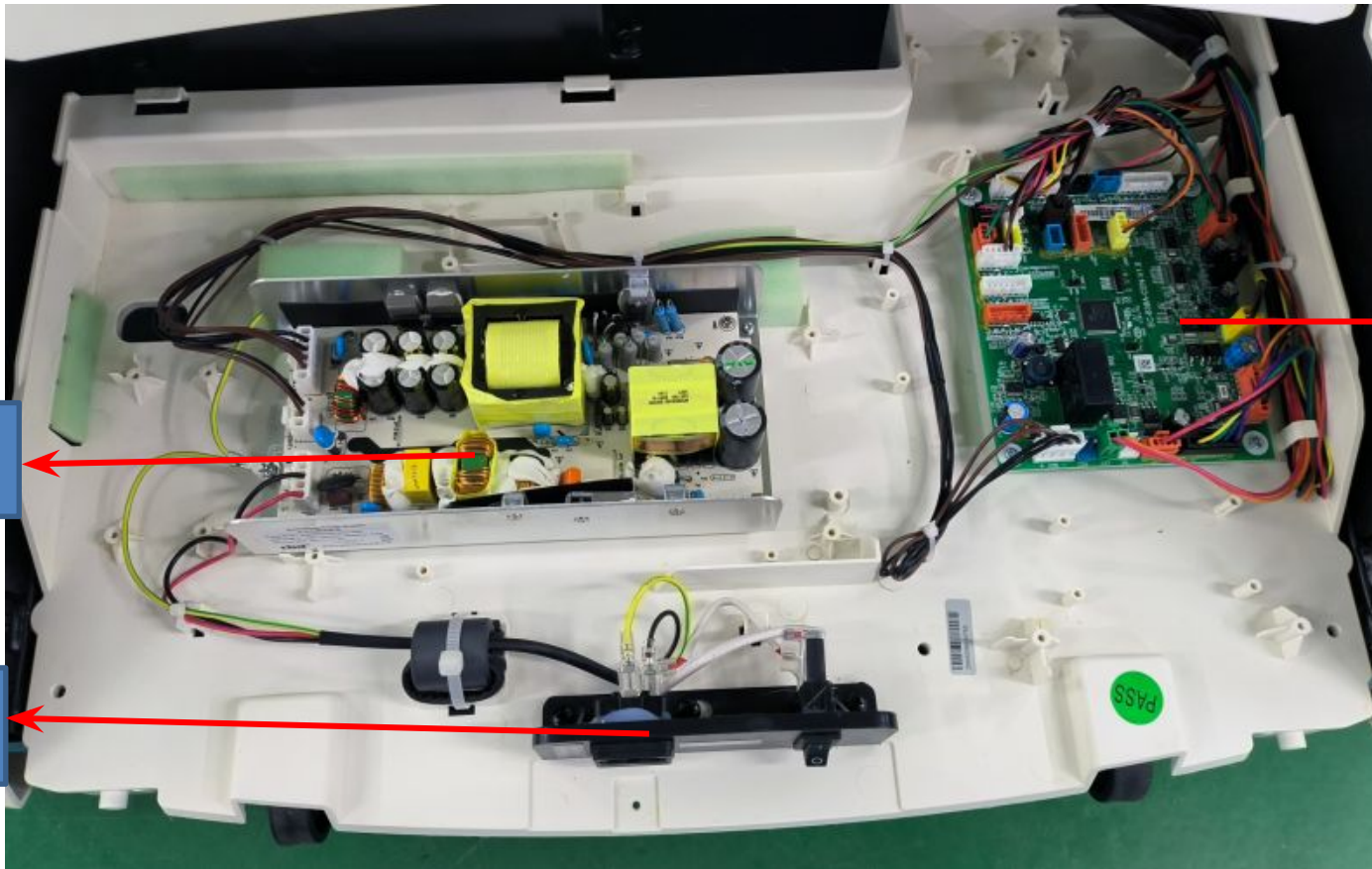


EASEPAL®

厦门蒙发利电子有限公司客户服务部

## 二、Circuit working principle

### 1、Component description for main PCB box



power PCB

main PCB

power switch

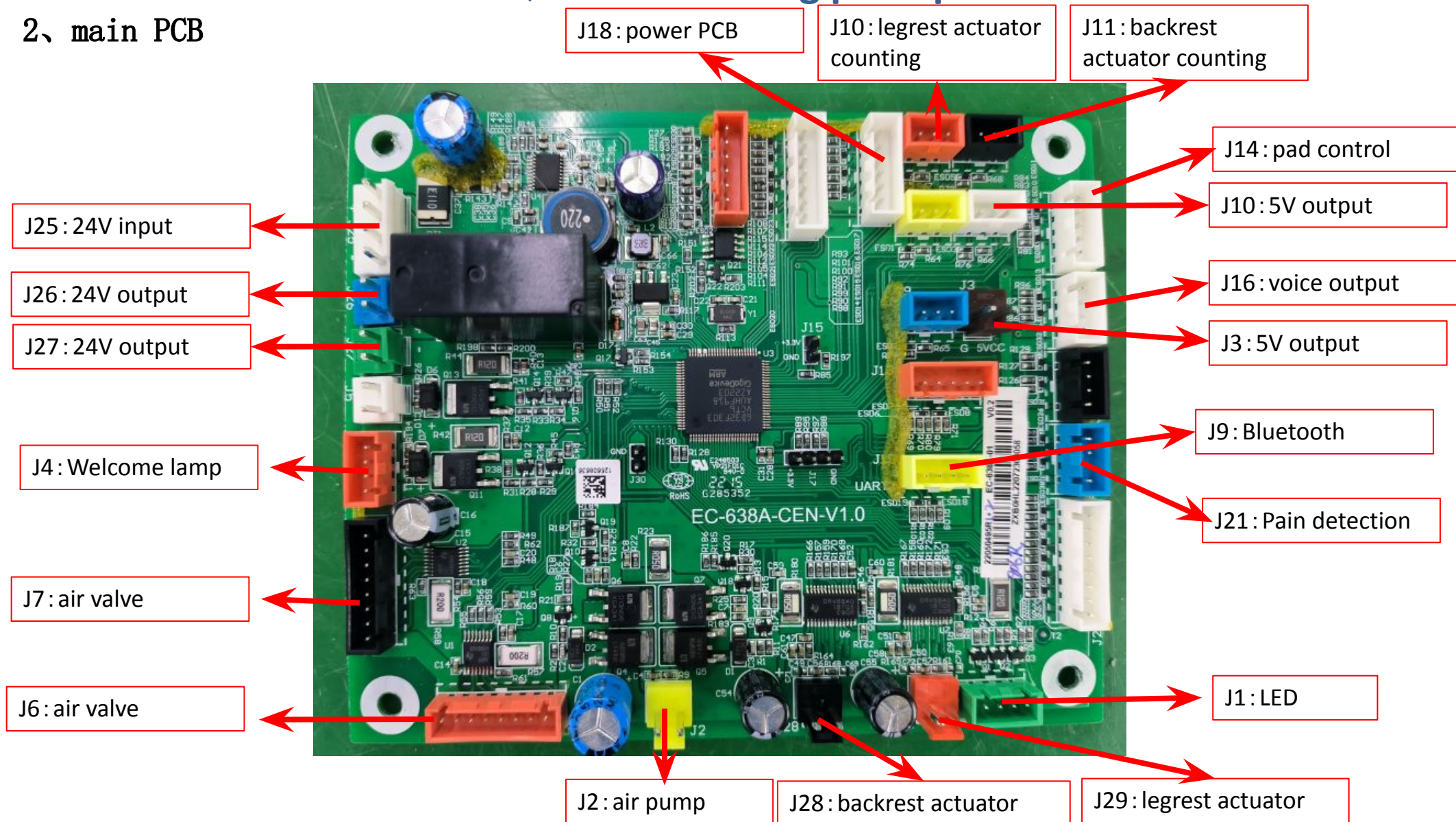


EASEPAL

厦门蒙发利电子有限公司客户服务部

## 二、Circuit working principle

### 2、main PCB





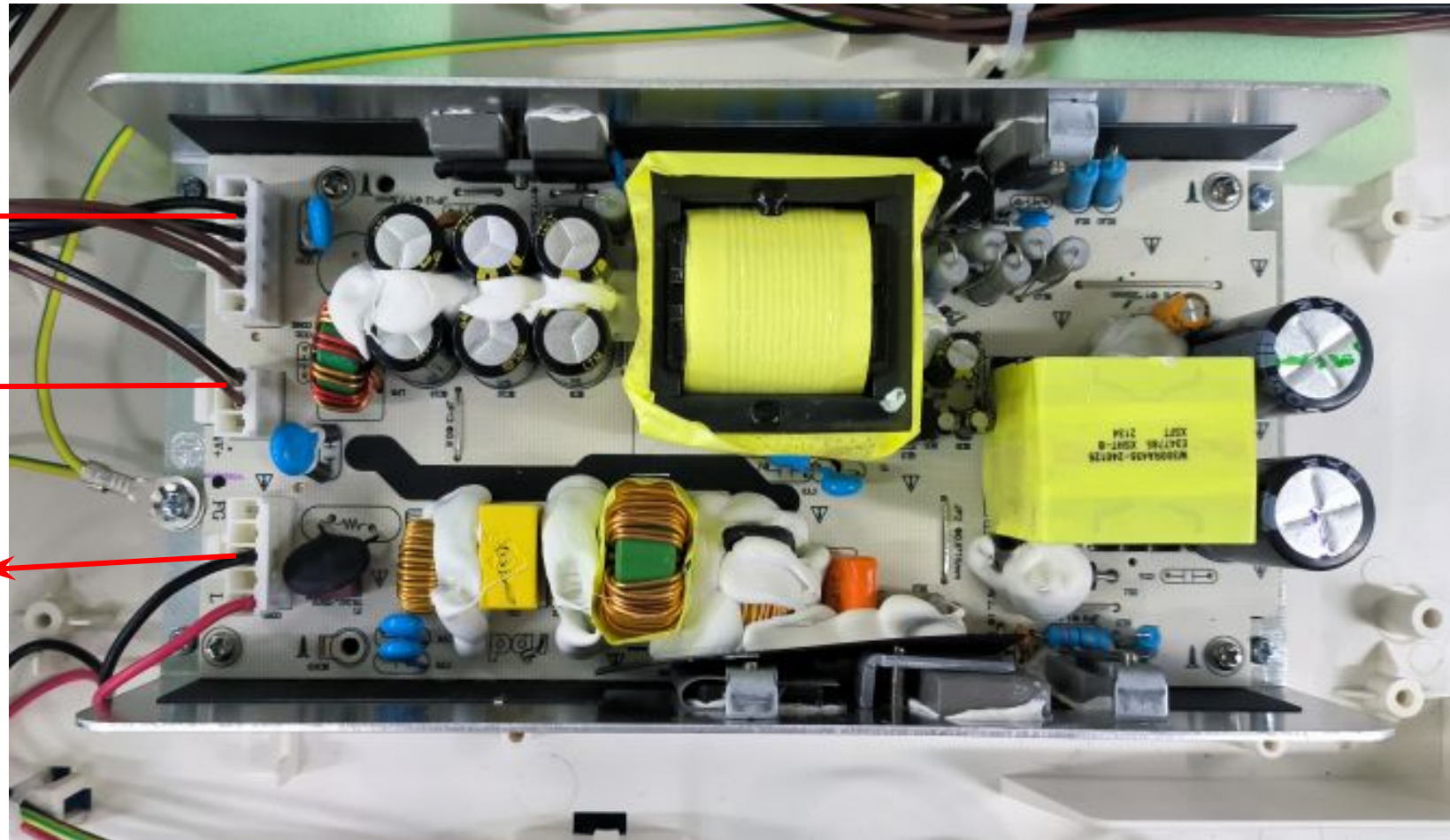


EASEPAL®

厦门蒙发利电子有限公司客户服务部

## 二、Circuit working principle

### 3、power PCB & air pump PCB



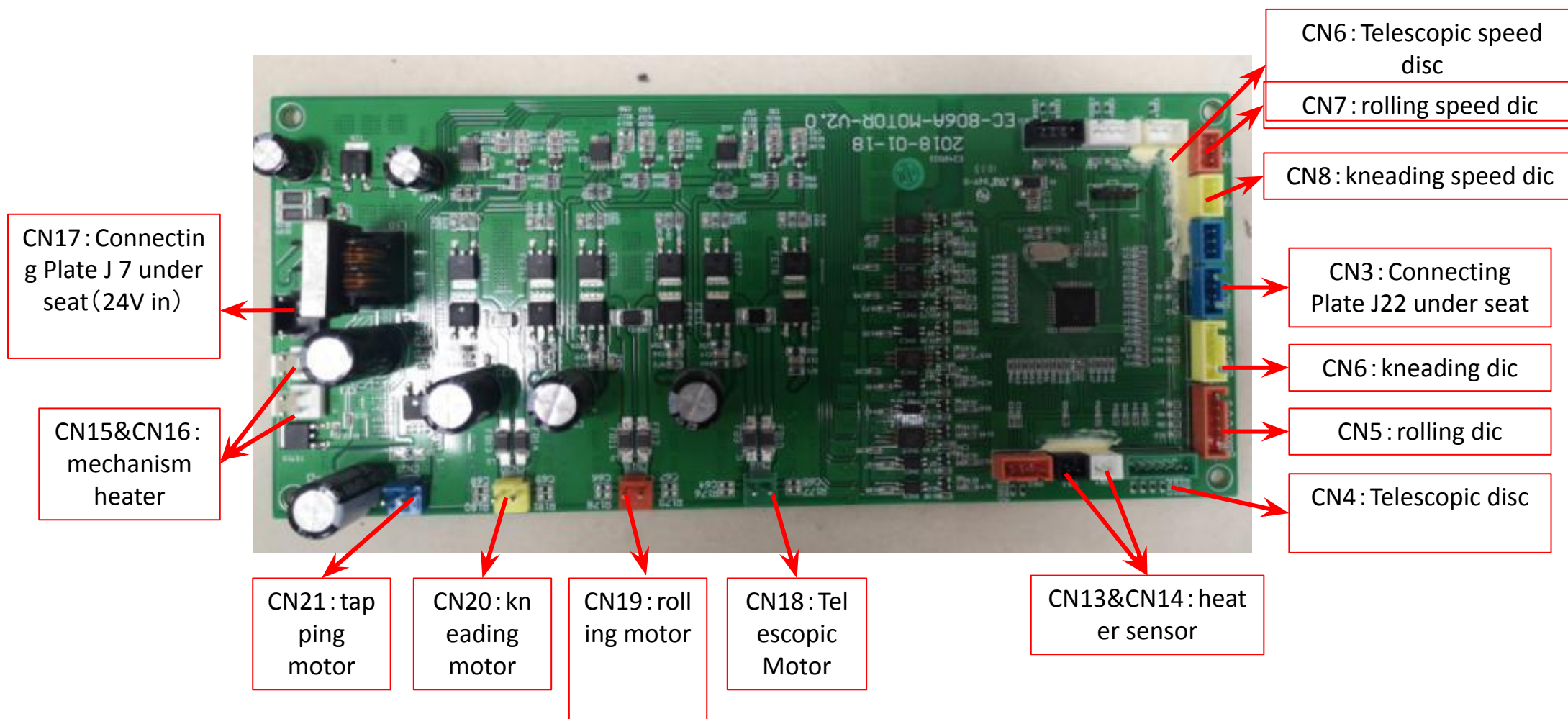


EASEPAL®

厦门蒙发利电子有限公司客户服务部

## 二、Circuit working principle

### 4、3D PCB





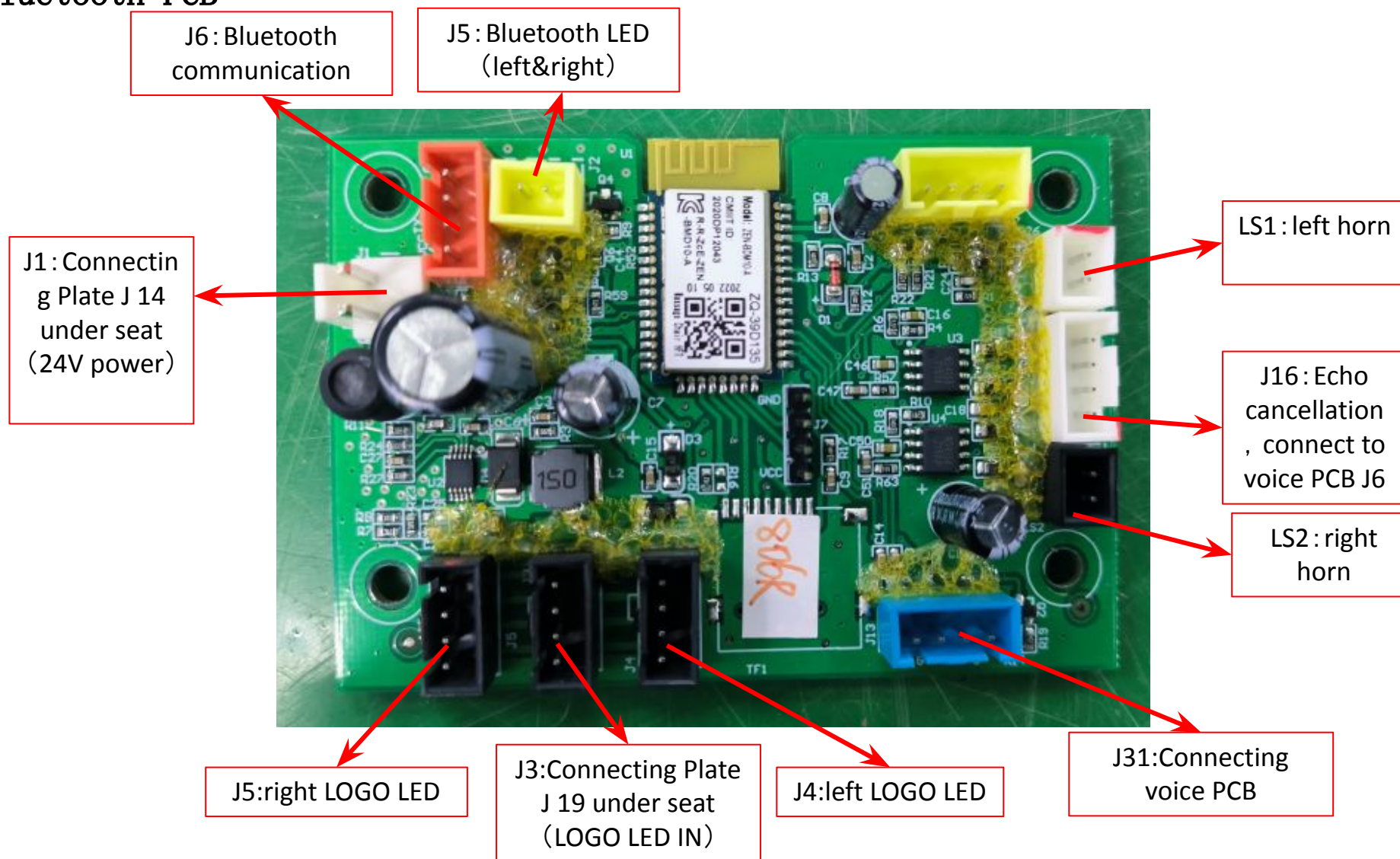


EASEPAL

厦门蒙发利电子有限公司客户服务部

## 二、Circuit working principle

### 5、Bluetooth PCB



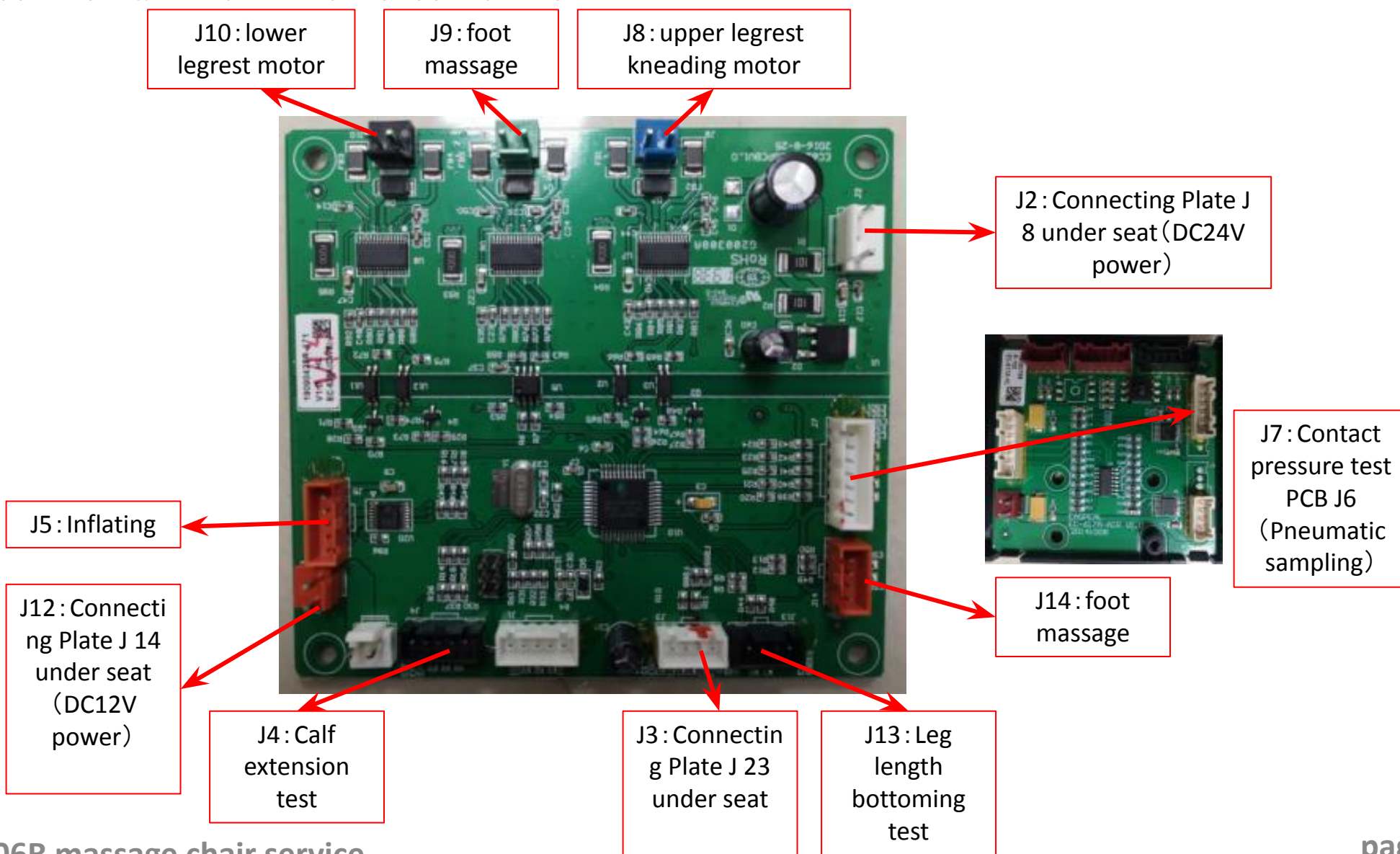


EASEPAL

厦门蒙发利电子有限公司客户服务部

## 二、Circuit working principle

### 6、food PCB & BAROMETRIC detection PCB





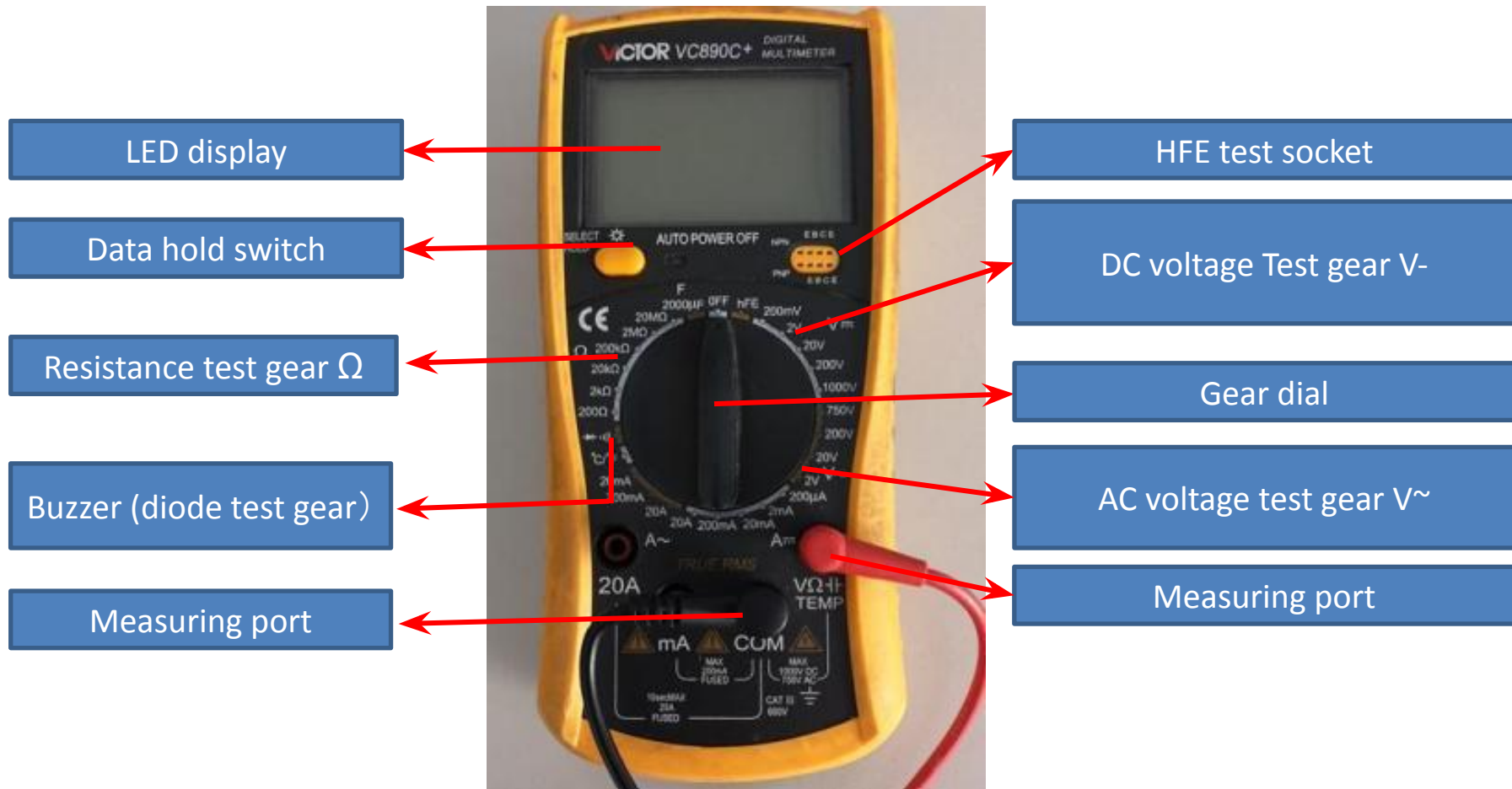
### 三、Massage chair removal instructions

#### 1.tools

					
Screwdriver size 1,2,3	Diagonal cutter and long nose pliers	Soldering Kit	Spanner tools Kit	Test pen	Allen Key set
					
Ratchet Tools Set	24V/DC power	Electric Driver	electrical adhesive tape	Cable Ties	WIRE ONECTORS

### 三、Massage chair removal instructions

#### 2、Use and measurement of digital multimeter



### 三、Massage chair removal instructions

#### 2.1、Function of the test gears

**Data hold switch**: Memorize the measured data for comparison。

**Buzzer (diode test gear)**: Measure the quality of diode, the on-off and alarm function of circuit

**Resistance gear test gear**: Measure the quality and value of resistance

**DC voltage Test gear V-**: Measure DC voltage

**AC voltage test gear V~**: Measure AC voltage

**VΩ / COM**: VΩ Red pen port (+ pole) during test, black pen port (- pole) during com test

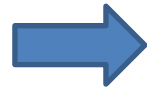
**Note**: when carrying out resistance or voltage test, it is necessary to select a suitable range. If the range is too small to be measured, and the range is too large, the test error range is large; if the voltage is not known, it is necessary to select a range measurement with a large windlass.

### 三、Massage chair removal instructions

#### 2.2、On / off measurement of lines



open circuit



As shown in the left picture, first set the multimeter to the buzzer and power it  
When the switch is on, the multimeter will display "0."; then contact the two probes with the ends of the red wire  
At this time, the multimeter still shows "1." there is no change, which means there is an open circuit in the middle of the wire, that is, the line is open.



close circuit



As shown in the picture on the left, if the multimeter shows the number of ". 002" or ". 00n" and gives an alarm, it means that the wire is connected.



### 三、Massage chair removal instructions

#### 2.3、Measurement of AC voltage



As shown in the picture above: measure the household plug-in board power supply (220V), select the range of 750, and the test result shows "224", indicating that the actual voltage of this group of sockets is 224v at the moment (the switch is pressed down, so there is power, and the light is on).



As shown in the above picture: measure the power supply (220V) of our household plug-in board, select the range of 750, and the test result is displayed as "001", indicating that the actual voltage of this group of sockets is 0V at the moment (the switch is not pressed down, so there is no power, and the light is not on).



## 三、Massage chair removal instructions

### 2.4、DC voltage measurement



As shown in the picture above: the test result is "1.58", indicating that the voltage at both ends of the battery is 1.58v, and the red lead is connected to the "+" pole of the battery, and the black lead is connected to the "-" pole of the electromagnetic.



As shown in the above picture: the test result is "- 1.58", indicating that the voltage at both ends of the battery is 1.58v, and the red lead is connected to the "-" pole of the battery, and the black lead is connected to the "+" pole of the electromagnetic

### 三、Massage chair removal instructions

一. 披风枕头的拆卸 **Disassembly of the backrest pad and pillow** A. 拉开链, 可以取下枕头 Locate the Head Pad Assy at the top, front of the chair as shown in picture below



拉开拉链, 取下小枕头  
unzip the zipper, take  
down the pillow



小枕头被取下  
the pillow had been  
taken down





EASEPAL®

厦门蒙发利电子有限公司客户服务部

### 三、Massage chair removal instructions

B. 拉开披风拉链, 取下披风

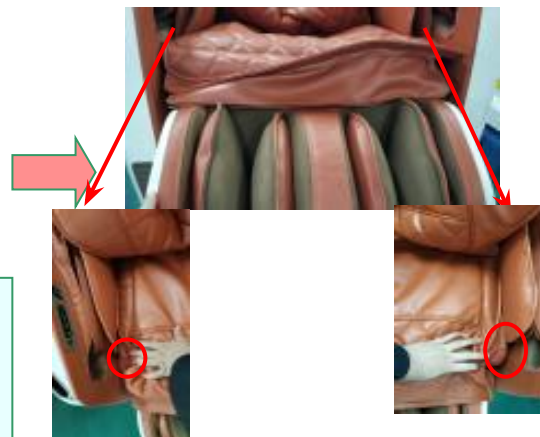
Unzip the zipper fixing backrest pad, then take down the backrest pad



拉开拉链  
unzip the zipper



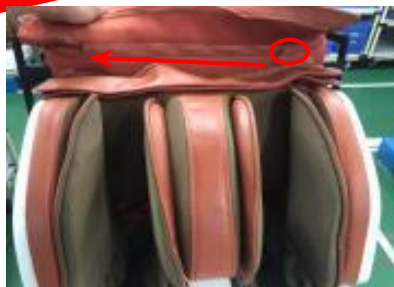
解开粘毛扣  
Disconnect the  
fastening



拉开坐垫两边的拉链  
Unzip the zipper



拉开坐垫与小腿的拉链  
Unzip the zipper



拉开坐垫与坐部的拉链  
Unzip the zipper



披风被取下  
Backrest pad had been taken down





EASEPAL®

厦门蒙发利电子有限公司客户服务部

### 三、Massage chair removal instructions

二. 头罩组件的拆卸 **disassembly of the hood** A. 取下披风 Take down the pad B. 拆卸上后盖和分离肩部

Disassemble the rear cover and the shoulder massage



取出头罩正前方的5颗螺丝  
Remove 5 screws



拉开肩部两边的拉链  
Unzip the zipper both side



EASEPAL®

厦门蒙发利电子有限公司客户服务部

### 三、Massage chair removal instructions



取出4颗螺丝  
Take down 4 screws



拉开拉链后，取出肩部的6颗螺丝，分离肩  
部

Remove 6 screws, take down the shoulder



EASEPAL®

厦门蒙发利电子有限公司客户服务部

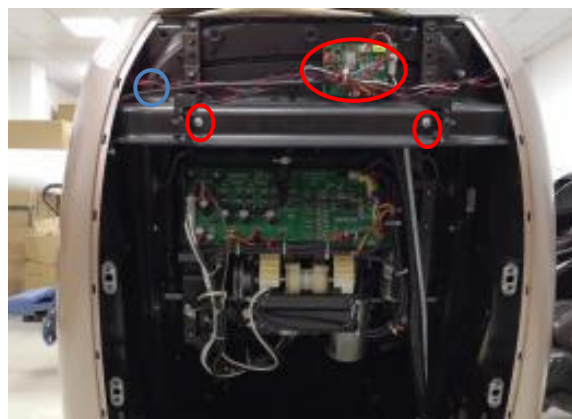
### 三、Massage chair removal instructions



将手抓在凹槽处往外掰开  
，取下上后盖  
Take down the cover



上后盖  
Rear  
cover



取下两颗螺丝，剪掉扎扣，拔掉端子  
Remove 2  
screws, disconnect the  
terminals



取出头罩固定背架的螺丝，  
取下头罩组件  
Remove the screws, take  
down the hood



### 三、Massage chair removal instructions

#### C. 头罩内部组件拆卸 disassembly of the hood unit



用一字螺丝刀延喇叭网罩边缘撬开，即可更换  
Open the horn cover with a screwdriver or a knife

取下固定头罩外盖螺丝，一边10颗，两边总共20颗，即可分离头罩外部  
Remove 10 screws on both side, separate the hood



### 三、Massage chair removal instructions



取下4颗螺丝, 拔掉所有端子即可  
取下功放转接板  
Remove 4 screws, disconnect all the  
terminals



功放转接板  
Power amplifier PCB



灯带  
led

拔掉端子(蓝色标识), 取下3颗R形夹螺丝(黄色  
标识), 即可取下左右灯带  
Remove the screws and disconnect the  
terminal, then remove the LED



灯带  
led

### 三、Massage chair removal instructions

#### 三. 肩部的拆卸 disassembly of the shoulder A. 拆卸头罩后

Take down the hood



拉开拉链, 拔掉气管  
Unzip the  
zipper, discontent the  
air hose



用六角扳手, 取下8颗螺丝, 肩部完成  
拆卸  
Remove 8 screws, take down the  
shoulder



拉开拉链, 拔掉  
气管  
Unzip the zipper



EASEPAL®

厦门蒙发利电子有限公司客户服务部

### 三、Massage chair removal instructions

#### 四、侧板组件的拆卸 disassembly of the side board

A. 侧板的拆卸(图示为右边, 左边同样的拆卸方式)

Disassembly of the side board



用一字螺丝刀在底部撬开装饰件(用布包下螺丝刀头部, 以防止划伤侧板)  
Open the cover with a screwdriver

断开1个信号端子(端子颜色为透明的), 拔掉气管

Discontent the transparent terminal, Discontent the hose



用六角扳手取下4颗螺丝, 将侧板往上一提, 即可取下侧板  
Remove 4 screws, take down the side board upwards

### 三、Massage chair removal instructions

#### B. 手控器的拆卸 disassembly of the remote control



拆下左侧板，可以看到手控器接线端  
disassemble left side panel, we can see the terminal



取下螺丝，断开端子，取下平板手控器  
take down the pad control



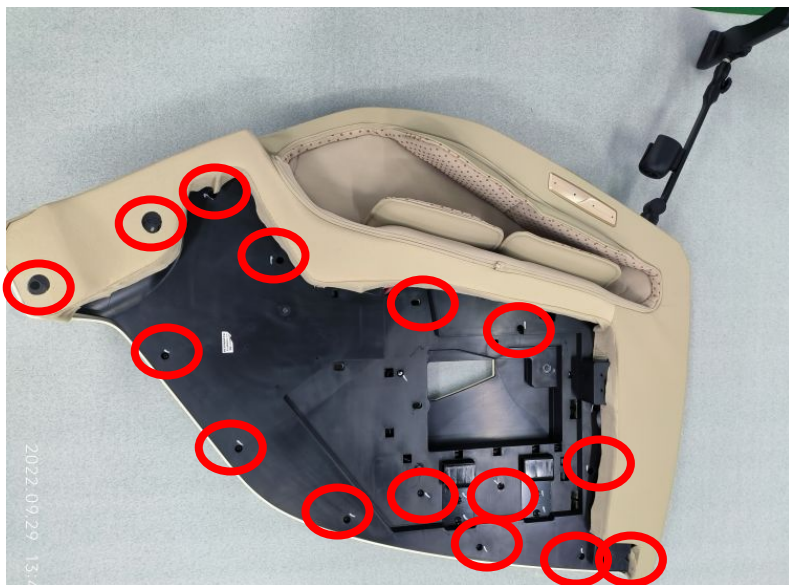


EASEPAL®

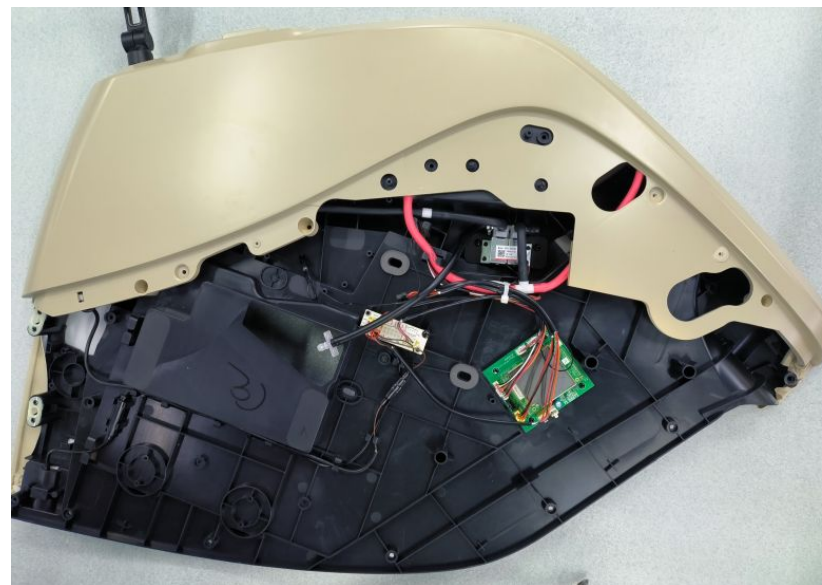
厦门蒙发利电子有限公司客户服务部

### 三、 Massage chair removal instructions

#### C. 侧板装饰件的拆卸 disassembly of the trim



取下固定装饰件的螺丝  
remove the screws



掰开侧板装饰件  
open the trim

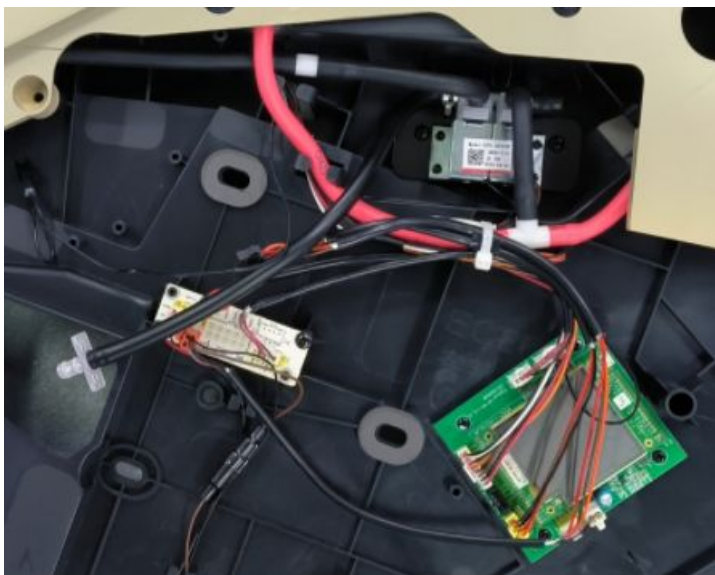


EASEPAL®

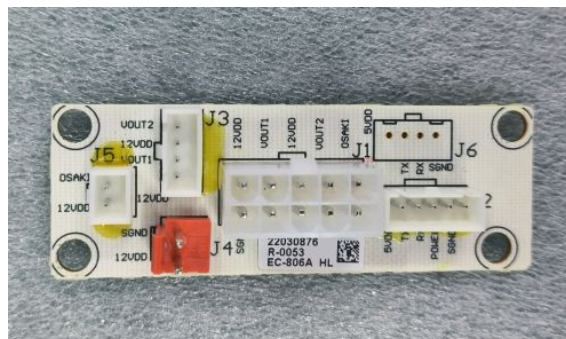
厦门蒙发利电子有限公司客户服务部

### 三、Massage chair removal instructions

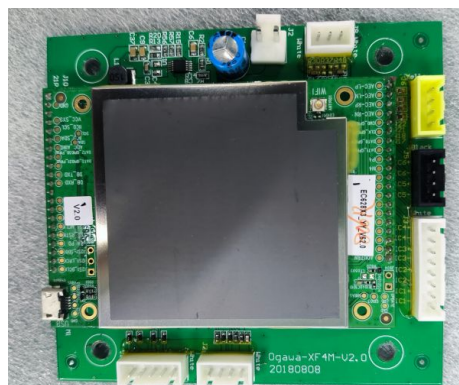
D. 语音板、转接板的拆卸 disassembly of the trim



现在可以拆卸对应的配件  
now we can replace the spare parts



侧板转接板  
Adapter pcb



语音板  
voice pcb



二联气阀  
2-way air valves



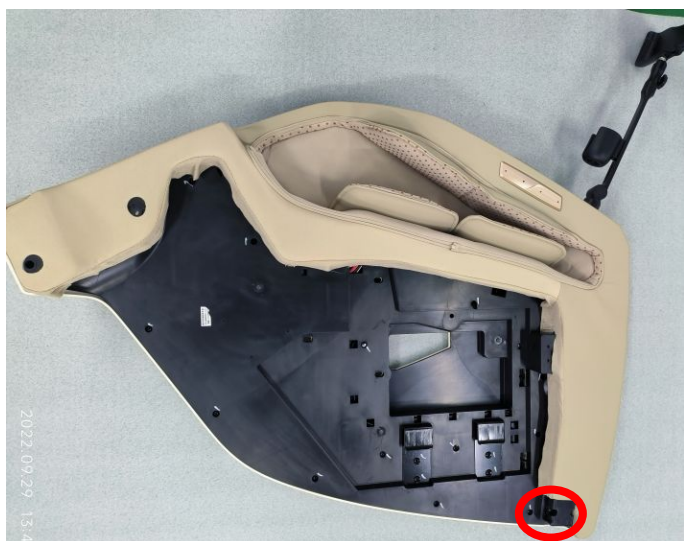


EASEPAL®

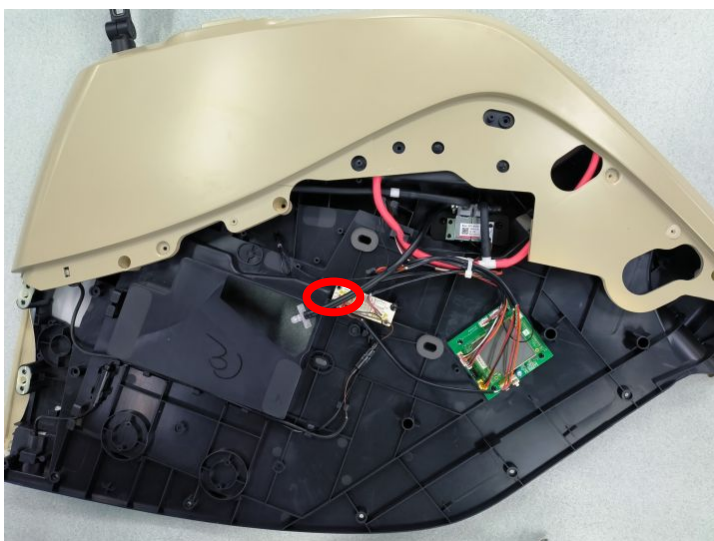
厦门蒙发利电子有限公司客户服务部

### 三、Massage chair removal instructions

E. 迎宾灯的拆卸 disassembly of the welcome lamp unit



取下2颗螺丝  
remove 2 screws



拔掉迎宾灯接线端子  
disconnected the terminal



迎宾灯组件  
the welcome lamp



EASEPAL

厦门蒙发利电子有限公司客户服务部

### 三、Massage chair removal instructions

#### F. 手控器支架的拆卸 disassembly of remote control holder



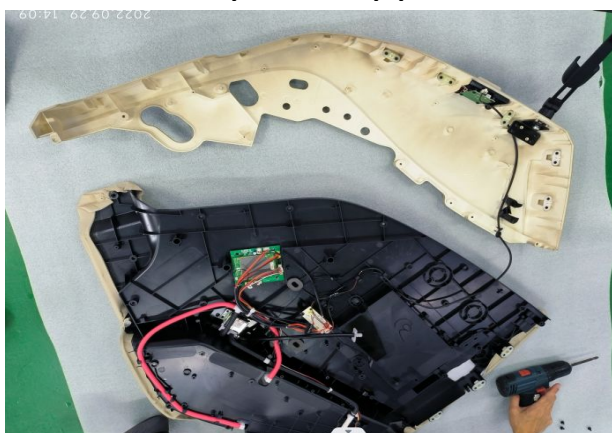
拉开扶手拉链  
unzip the zipper



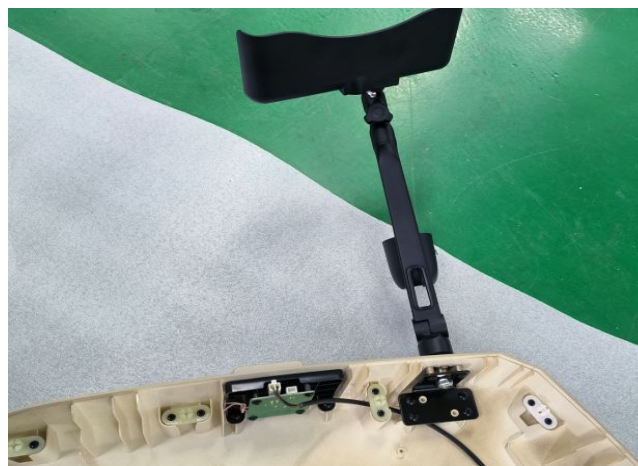
取出扶手皮套  
remove arm cover



取下螺丝  
remove the screws



分离外壳  
separate the cover



取下螺母  
remove the nut



取出手控器支架  
remove the holder



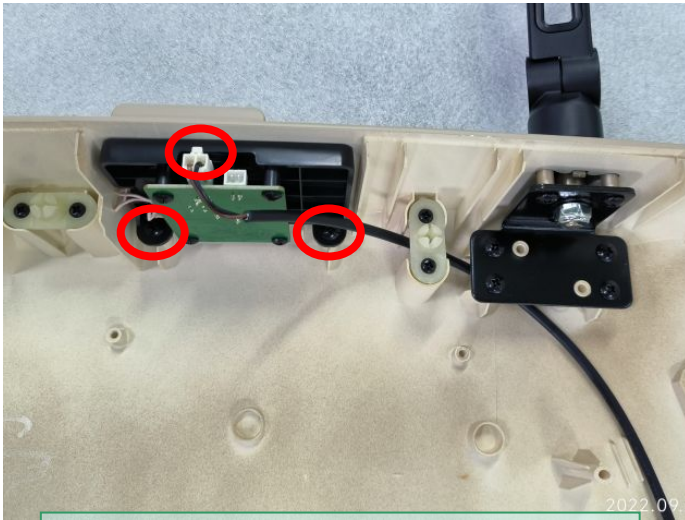


EASEPAL®

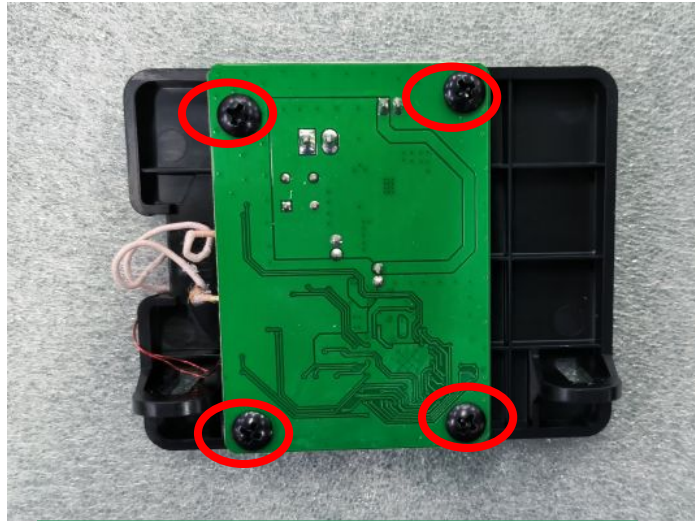
厦门蒙发利电子有限公司客户服务部

### 三、Massage chair removal instructions

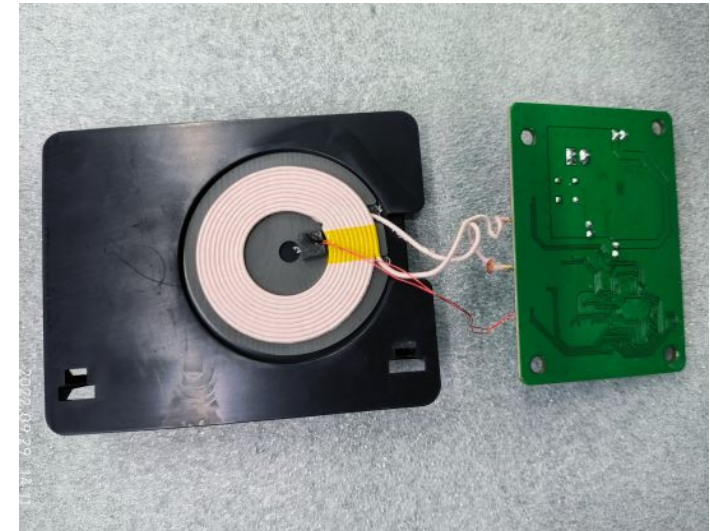
G. 无线充电组件的拆卸 disassembly of wireless charging module



取下2颗螺丝，拔掉端子  
remove 2  
screws, disconnected the  
terminal



取下4颗螺丝  
remove 4 screws



分离无线充电组件  
separate the wireless  
charging module



**EASEPAL®**

厦门蒙发利电子有限公司客户服务部

### 三、Massage chair removal instructions

#### 五. 座侧的拆卸(图示为左边, 右边同样方式)

**Disassembly of side seat massage** A. 先将侧板取下  
remove the side board

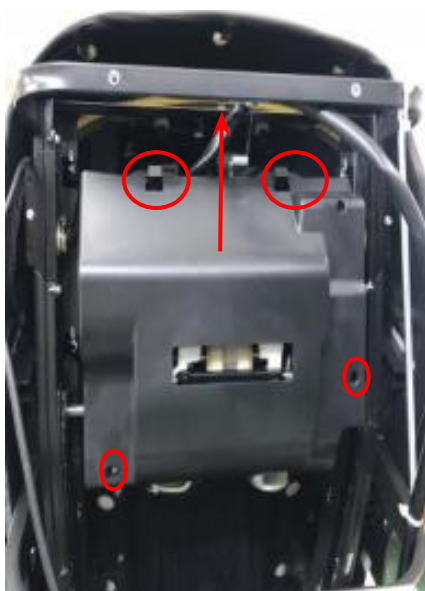


用六角扳手取下两颗螺丝, 拔掉气管, 即可  
更换坐部

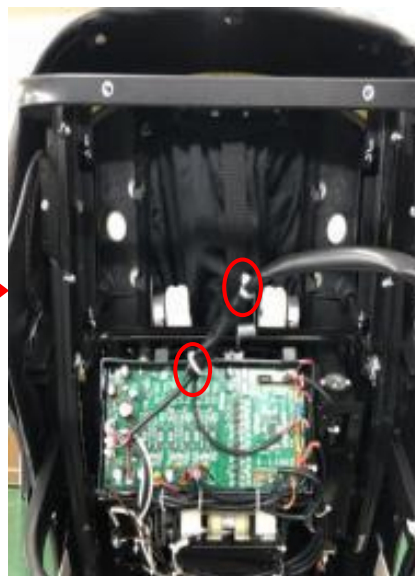
Remove 2 screws, discontent the air hose

### 三、Massage chair removal instructions

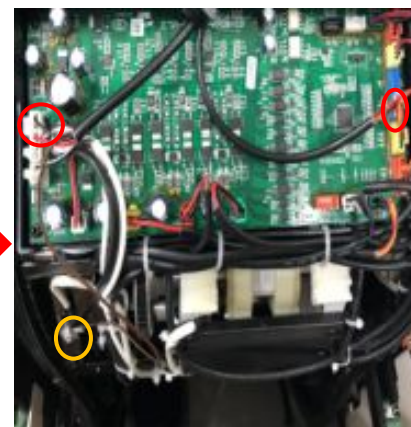
六. 机芯的拆卸与安装 disassembly of the gear box and install the gear box A. 上  
后盖取下 remove the upper rear cover



拆除2颗螺丝，再向上提，取下  
机芯盖  
Remove 2 screws, take down the  
cover



剪掉扎扣  
Cut the cable tie



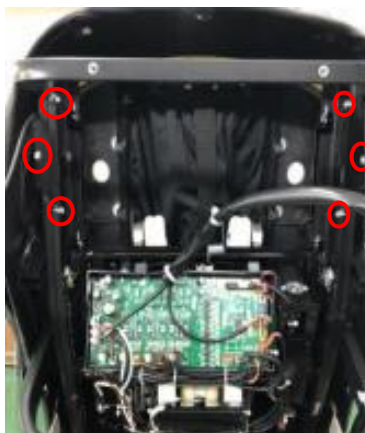
断开两个信号端子，拆除地  
线螺丝  
Discontent 2  
terminals,remove the screw



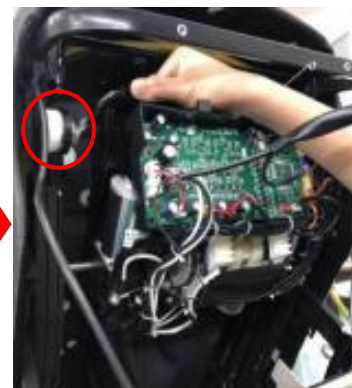
### 三、Massage chair removal instructions



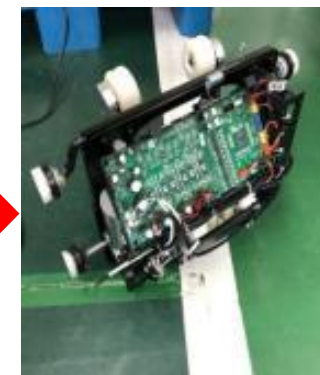
拔掉行程端子(红色), 用外接24V电源将机芯走至下方  
Move down gear box with 24V power on the red terminal



用十字螺丝刀取出6颗螺丝, 取出挡块  
Remove 6 screws, take down the Iron baffle



用外接24V电源再将机芯走至上方, 先将上导向轮走出背架导轨, 再将机芯继续行走, 至下导向轮走出背架导轨, 取下机芯  
Move up and remove the gear box with a 24V power on the red terminal



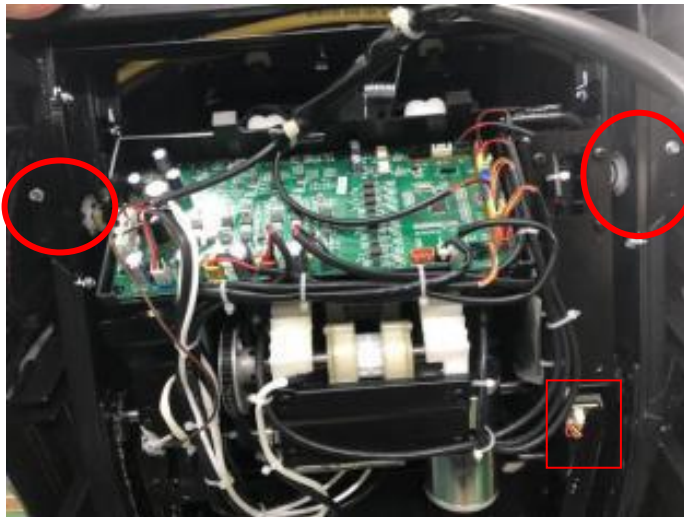


EASEPAL®

厦门蒙发利电子有限公司客户服务部

### 三、Massage chair removal instructions

B. 机芯安装 install gear box 1. 先将机芯放置背架导轨 put the gear box in the backrest 2. 用外接24V电源, 将机芯走至下方 Move down the gear box with a 24V power on the red terminal 3. 锁上两边缺口的挡块(6颗螺丝) Install the iron baffle(6 screws) 4. 将背架线2个端子安插, 接上地线 Connect 2 terminal, screw the screw with the ground wire 5. 再将背架线的2个扎扣位重新扎好 Fasten the cable tie



再将机芯用24V外接电源走至上方(上导轨轮与固定挡块的中间螺丝平行)

Make the wheel lower on the middle of the iron baffle



按住计数码盘开关(黄色标识)将码盘调的白点调至计数器下方

Press the button and make the white line lower on the sensor

### 三、Massage chair removal instructions

#### 七. 前靠背的拆卸 disassembly of front backrest cover

1. 拆下披风、上后盖、肩部组件、两边侧板、坐垫、靠背后盖

Take down the backrest pad、upper rear cover、hood、shoulder、side board、seat pad、lower cover



用十字螺丝刀拆除4颗螺丝，取出下后盖

Remove 4 screws, take down the lower cover

取出下后盖

The lower cover had been taken down





EASEPAL®

厦门蒙发利电子有限公司客户服务部

### 三、Massage chair removal instructions

7. 拆除前靠背固定背架的螺丝,取下前靠背 cover, then remove the front backrest cover

底部4  
颗螺丝  
4  
screws  
on the  
bottom



拔掉黄色气管和灰色  
气管  
Discontent the yellow  
air hose



剪掉扎扣, 拔掉从背架下来的语音  
信号端子  
Cut the cable tie, discontent the  
terminal



EASEPAL®

厦门蒙发利电子有限公司客户服务部

### 三、Massage chair removal instructions

#### 八. 小腿的拆卸 disassembly of the leg rest

A. 小腿组件的拆卸 disassembly of the leg rest unit



拔掉两个小腿防脱卡片，抬起  
小腿往右一抬  
Remove 2 iron, move out the  
leg rest

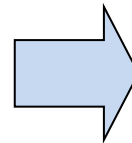
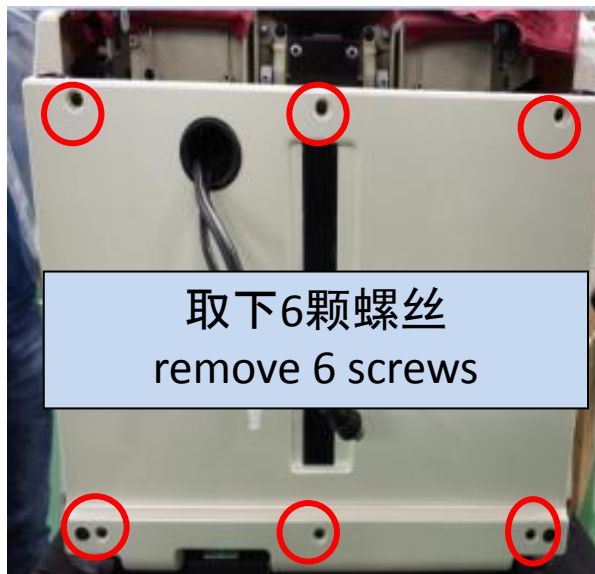


断开气管、信号端子，拆除小腿  
Discontent the terminal and air hose

### 三、Massage chair removal instructions

B. 上小腿组件的拆卸 disassembly of the upper legrest 1.

取下固定小腿保护盖的螺丝; 移除小腿保护盖 cover, take down the cover







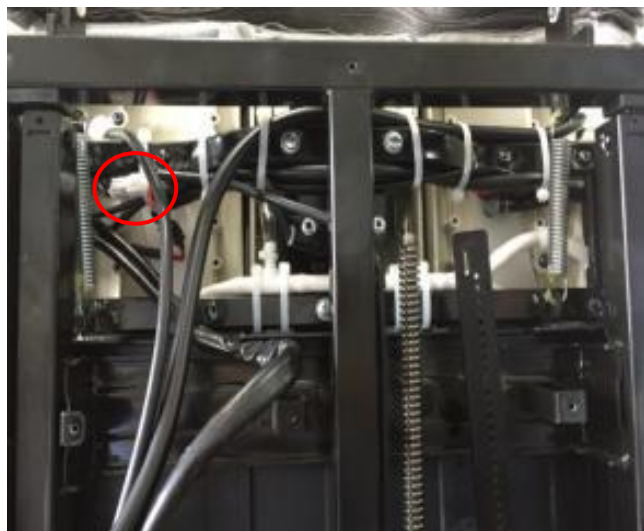
EASEPAL®

厦门蒙发利电子有限公司客户服务部

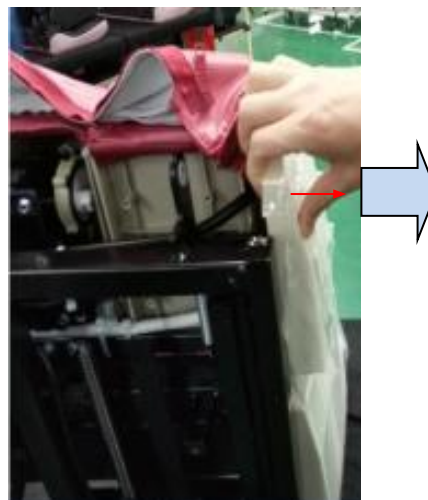
### 三、Massage chair removal instructions

#### 2. 拔掉上小腿的接线端子

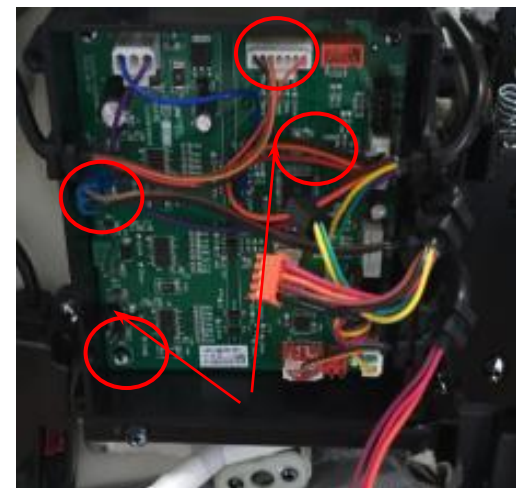
Discontent the terminals for upper leg rest



拔掉端子  
discontent the terminal



掰下右装饰盖  
Break off the cover



拔掉端子  
discontent the terminals

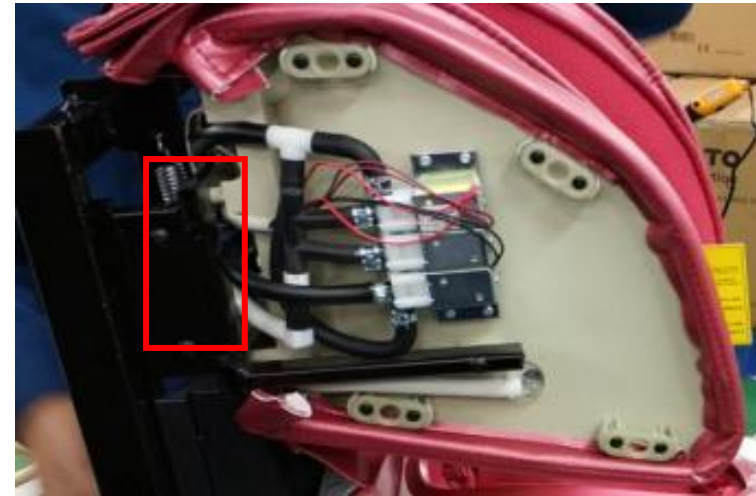
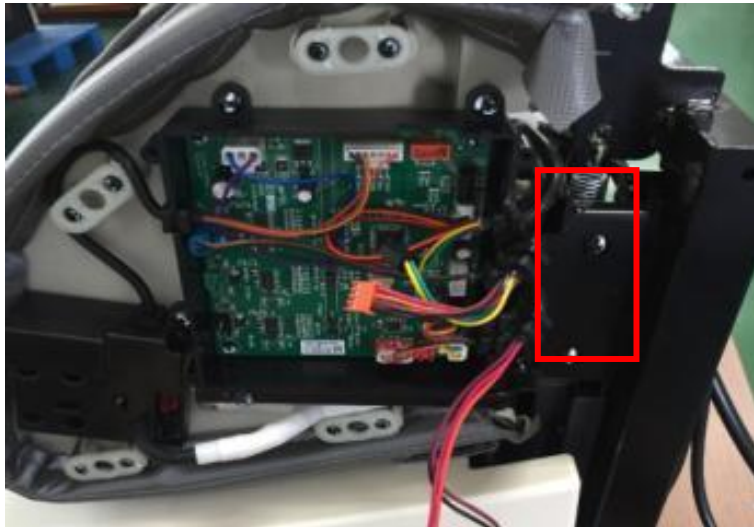


EASEPAL®

厦门蒙发利电子有限公司客户服务部

### 三、Massage chair removal instructions

3. 取下固定上小腿的4枚螺丝, 移出上小腿 Remove 4 screws  
fixing upper leg rest, move out the upper leg rest



取下固定上小腿组件的螺丝  
Remove 4 screws fixing upper leg rest

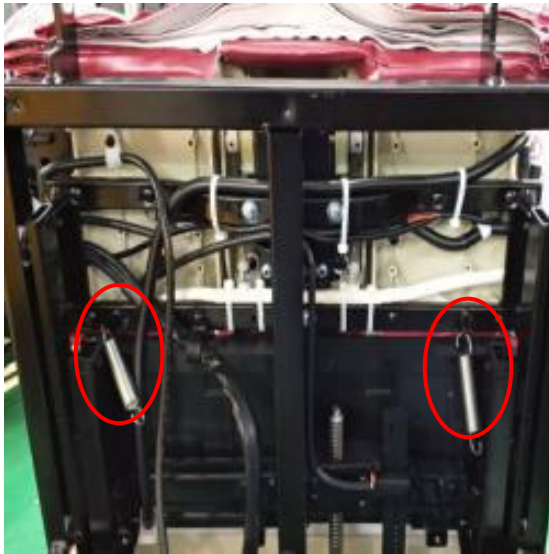


EASEPAL®

厦门蒙发利电子有限公司客户服务部

### 三、Massage chair removal instructions

4. 取下2个弹簧，拉开上小腿拉链，移出上小腿组件  
Take down 2 springs, unzip the zipper, remove the upper leg rest



取下弹簧  
Take down the springs



拉开拉链  
Unzip the zipper



移出上小腿组件  
Take down the upper leg rest





**EASEPAL®**

厦门蒙发利电子有限公司客户服务部

### 三、Massage chair removal instructions

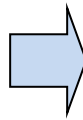
5. 现在，我们可以取下上小腿皮套。如果有需要，可以更换小腿气袋。

Now, we can take down the leather. If necessary, we can replace the air bag



### 三、Massage chair removal instructions

C. 小腿气阀、小腿转接板、气压检测板的拆卸 Disassembly of the air valve、PCB for leg rest、PCB for air pressure detection  
1. 掰开上小腿侧边装饰盖 Open the cover



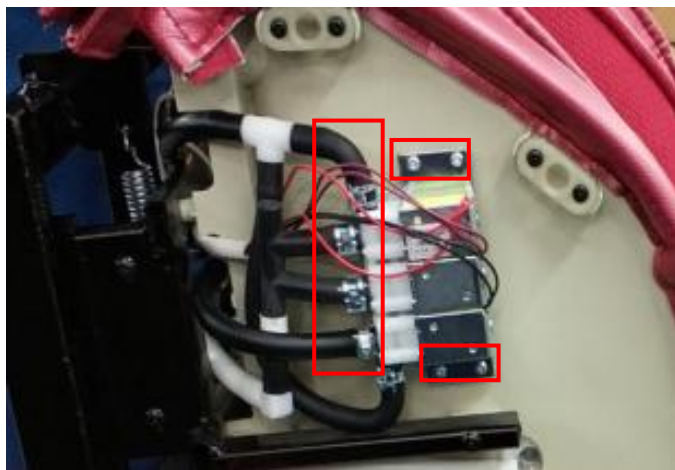


EASEPAL®

厦门蒙发利电子有限公司客户服务部

### 三、Massage chair removal instructions

2. 根据需要, 可以更换气阀。Now we can replace the air valve



拔掉气管, 取下固定气阀的螺丝  
Discontent the air hose, remove the screws fixing the air valve

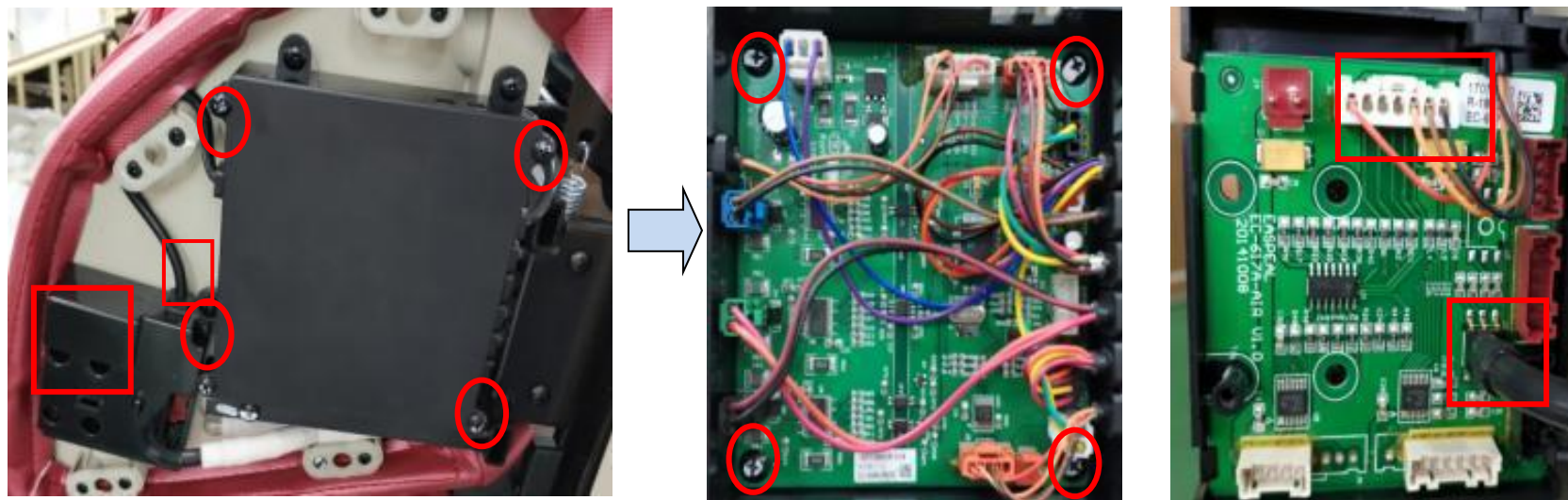


拔掉气阀端子  
Discontent the terminal



### 三、Massage chair removal instructions

3. 根据需要, 可以更换小腿转接板、气压检测板 Now we can replace the PCB for leg rest and the PCB for air pressure detection



取下上图螺丝, 拔掉接线端子, 可以更换小腿转接板和气压检测板  
Remove the screws and disconnect the terminals



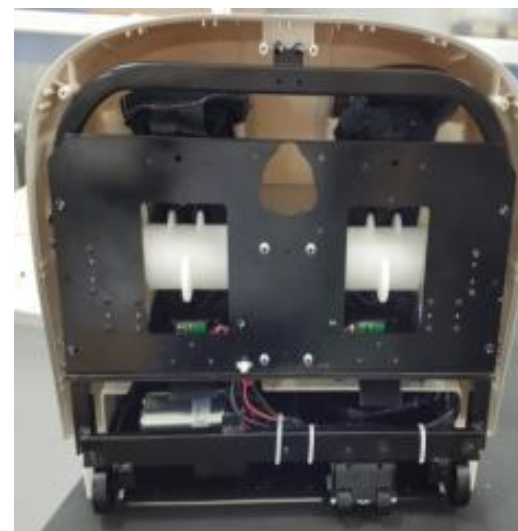
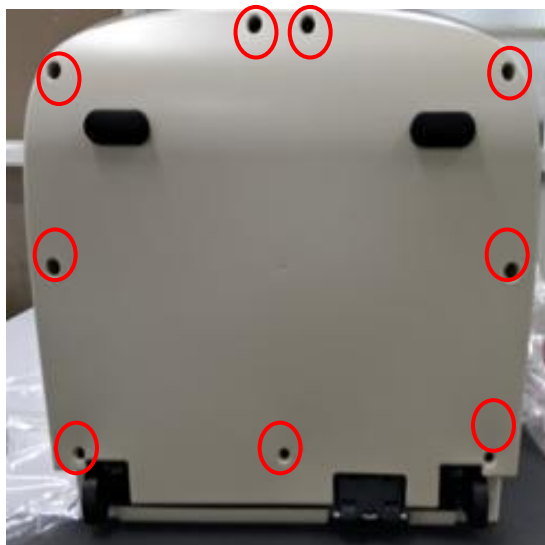
EASEPAL®

厦门蒙发利电子有限公司客户服务部

### 三、Massage chair removal instructions

D. 下小腿外盖的拆卸 Disassembly of lower leg rest cover

1. 取下小腿底盖 Remove the lower cover



取下固定下盖的螺丝，移出下盖  
Remove the screws and remove the cover

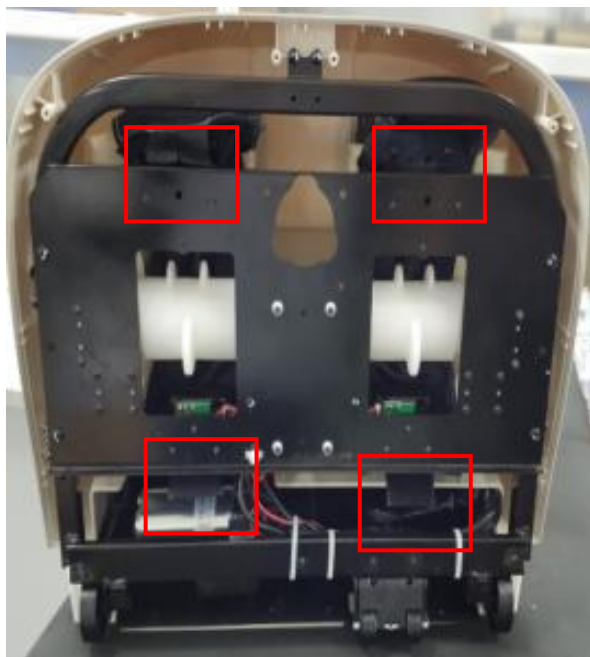


EASEPAL®

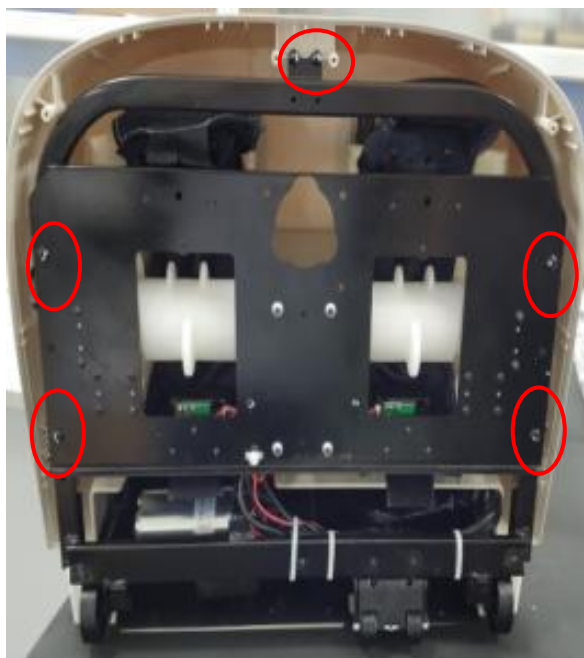
厦门蒙发利电子有限公司客户服务部

### 三、Massage chair removal instructions

2. 取下固定小腿外盖的螺丝, 撕开粘毛扣。移出外盖。 Remove the screws fixing the cover, stick the Sticky. Remove the cover



分离毛扣  
stick the Sticky



取下螺丝  
Remove screws

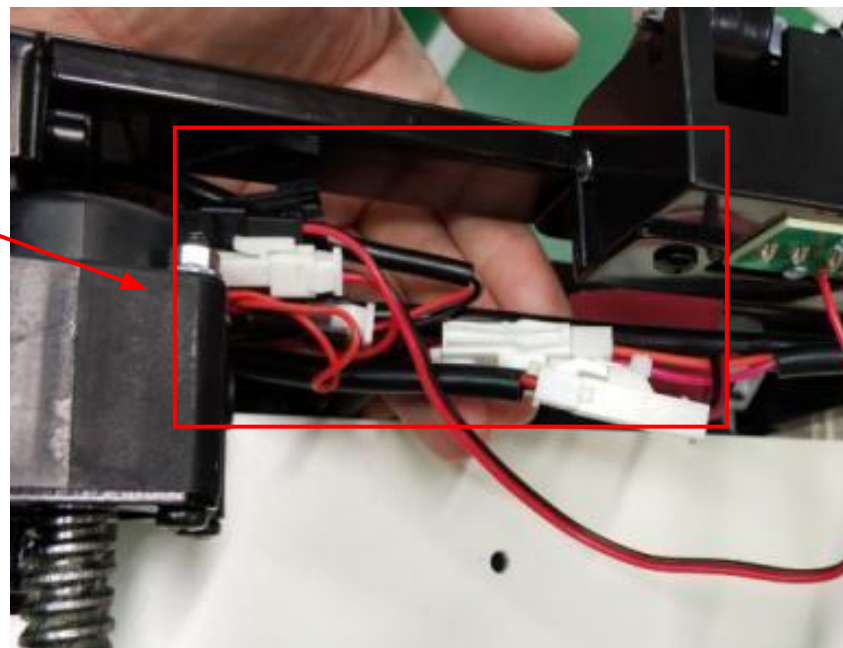
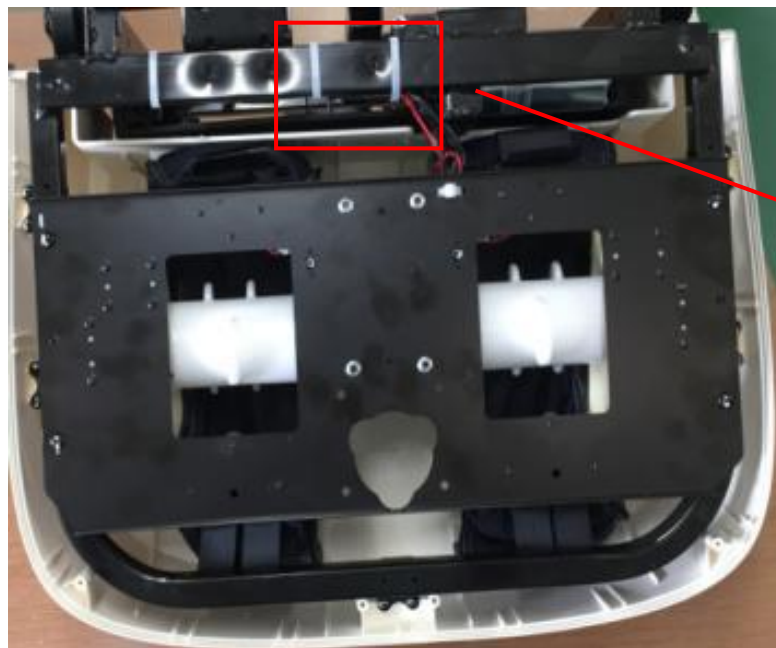


下小腿外盖被取下  
The cover had been taken down



### 三、Massage chair removal instructions

E. 小腿揉夹电机组件的拆卸 Disassembly of the kneading motor unit of leg rest 1. 取下小腿底盖(参考下小腿外盖的拆卸) Remove the lower cover of leg rest(refer to Disassembly of lower leg rest cover) 2. 剪掉扎扣断开揉夹电机接线端子 Cut the cable tie, discontent the terminals of the motor





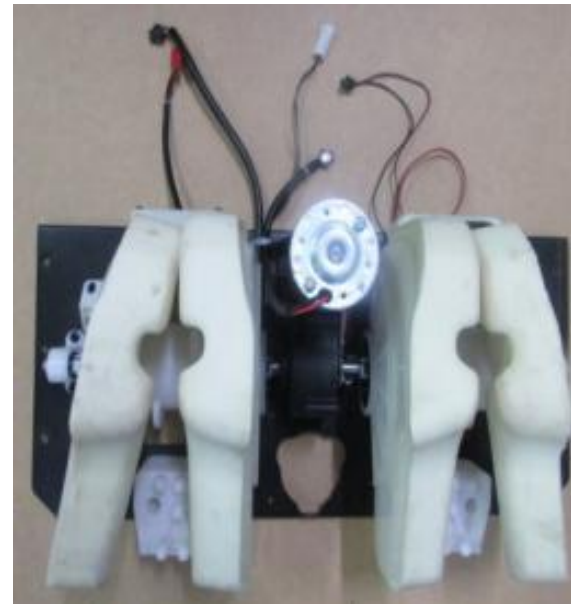
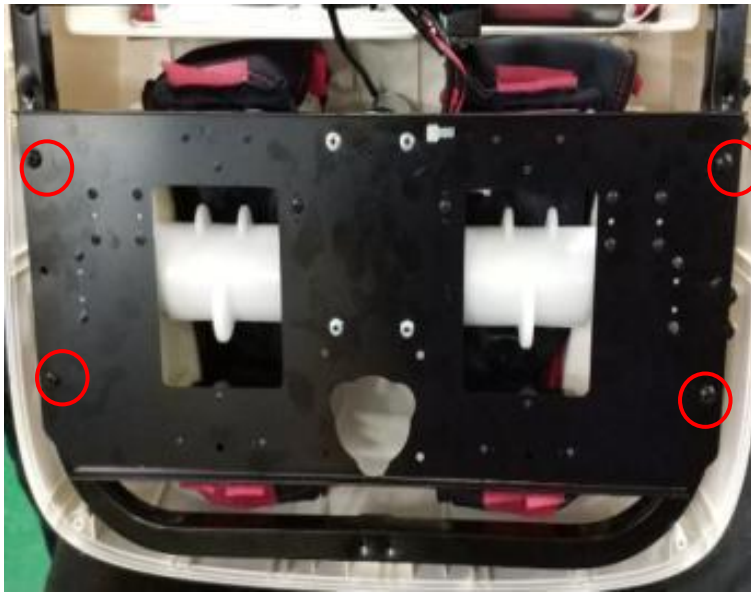
**EASEPAL®**

厦门蒙发利电子有限公司客户服务部

### 三、Massage chair removal instructions

#### 3. 取下固定揉夹电机组件的螺丝

Remove the screws fixing the kneading motor unit



取下揉夹电机组件  
Remove kneading motor unit

### 三、Massage chair removal instructions

**九. 座架推杆和小腿推杆的拆卸 disassembly of the actuator** 拆除座架推杆时, 必须提住椅子, 防止椅子滑落 Attention: hold the backrest prevent the backrest dropped suddenly (had better 2 people Coordination) 1. 拆除小腿 remove the leg rest 2. 拆除上后盖和下后盖 remove the rear cover 3. 拆除保护挡板 break of the baffle



用手往外掰即可取下保护挡布  
Break off the baffle





EASEPAL®

厦门蒙发利电子有限公司客户服务部

### 三、Massage chair removal instructions

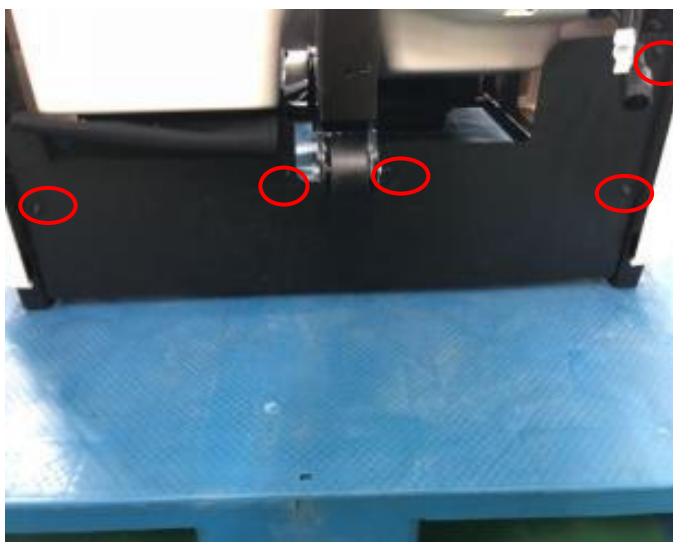
4. 拆除中心盒上盖 remove the cover of main PCB box



取下3颗螺丝, 拆除中心盒上盖  
Remove 3 screws, remove the cover

### 三、Massage chair removal instructions

5. 拆除座架推杆 拆除座架推杆时，必须提住椅子，防止椅子滑落(建议两人配合) Attention: hold the backrest prevent the backrest dropped suddenly (had better 2 people Coordination)



取下5颗螺丝，分离前挡布  
Remove 5 screws



拔掉插销，取出销轴，剪掉扎扣  
Take the shaft, cut the cable tie



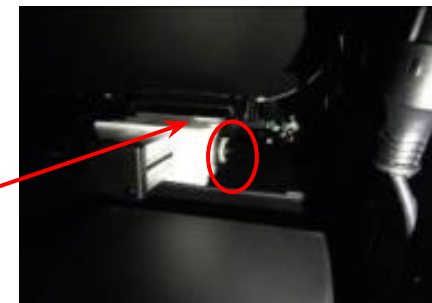
EASEPAL®

厦门蒙发利电子有限公司客户服务部

### 三、Massage chair removal instructions



剪掉扎扣，拔掉两个信号端子  
Cut the cable tie, discontent 2 terminals



用六角扳手拆除两颗螺丝，即可更换座架推杆  
Remove 2 screws, take down the actuator





**EASEPAL®**

厦门蒙发利电子有限公司客户服务部

### 三、Massage chair removal instructions

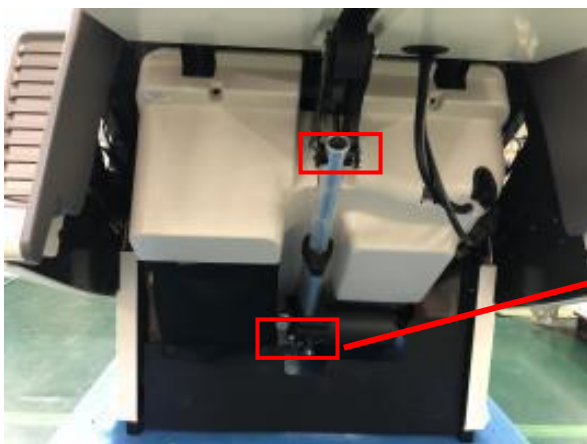


拆除座架推杆时，必须提住椅子，防止椅子滑落

Attention: hold the backrest prevent the backrest dropped suddenly  
(had better 2 people Coordination)

### 三、Massage chair removal instructions

B. 拆卸小腿推杆 disassembly of the leg rest actuator 1. 拆除上后盖和下后盖 Remove the rear cover (upper and lower) 2. 取下推杆两边的插销, 如下图标记位置 Take down 2 shaft as the picture below



拔掉插销, 取下销轴  
Take down the shaft



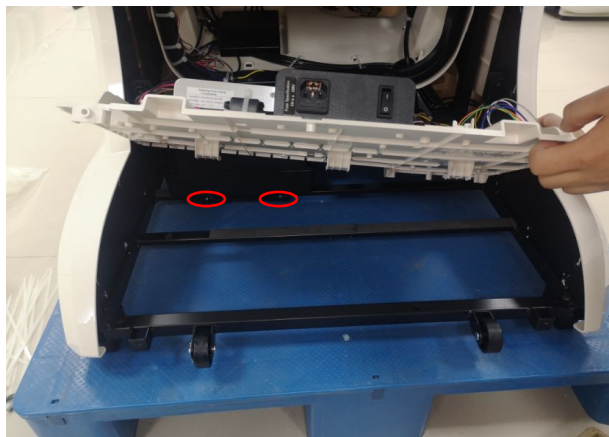
拔掉插销, 取下销轴, 并取  
下小腿推杆  
Take down the actuator



剪掉扎扣, 拔掉端子即可  
完整更换推杆  
Cut the cable  
tie, discontent the  
terminal  
Then we can replace a  
new actuator

### 三、Massage chair removal instructions

#### 十. 气泵盒组件的拆卸 disassembly of the air pump unit



A. 抬高中心盒底盖，取下2颗螺丝



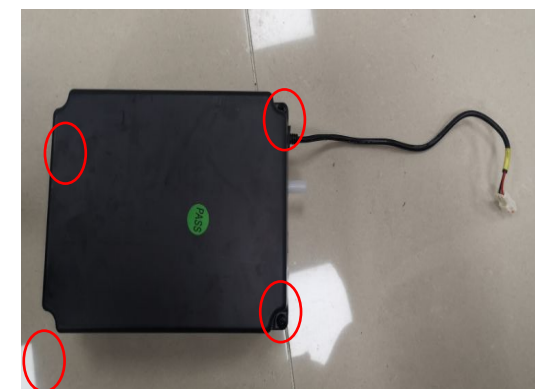
B. 剪掉扎扣，拔掉端子



D. 打开气泵盒



E. 取下固定气泵4颗螺丝



C. 取下气泵上4颗螺丝



F. 取下气泵



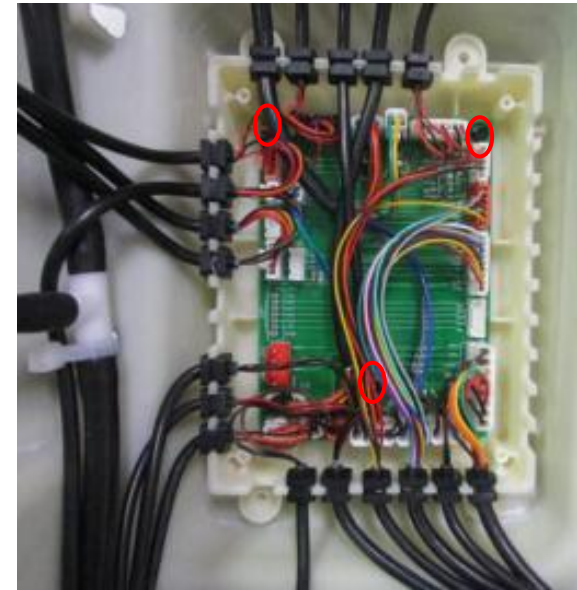


## 三、Massage chair removal instructions

十一. 座架转接板PCBA和座架气阀的拆卸 Disassembly of the PCBA and the air valve on the button of backrest A. 座架转接板的拆卸 disassembly of the transfer PCBA 1. 将上下后盖取出, 保护挡板取出 take down the rear cover (upper and lower), take down the baffle



用十字螺丝刀取出4颗螺丝  
Remove 4 screws



拔掉所有端子线, 拆除3颗螺丝即可更换  
Remove 3 screws and disconnect all the terminals

### 三、Massage chair removal instructions

B. 座下气阀的拆卸disassembly of the air valve under the seat 1. 将上下后盖取出, 保护挡板取出 take down the rear cover (upper and lower), take down the baffle



拆除3颗螺丝, 拔掉黑色, 将气阀盒上盖打开, 即可取出气阀进行更换

Remove 3 screws, discontent the air hose and terminal, open the cover, remove the air valve

座下气阀

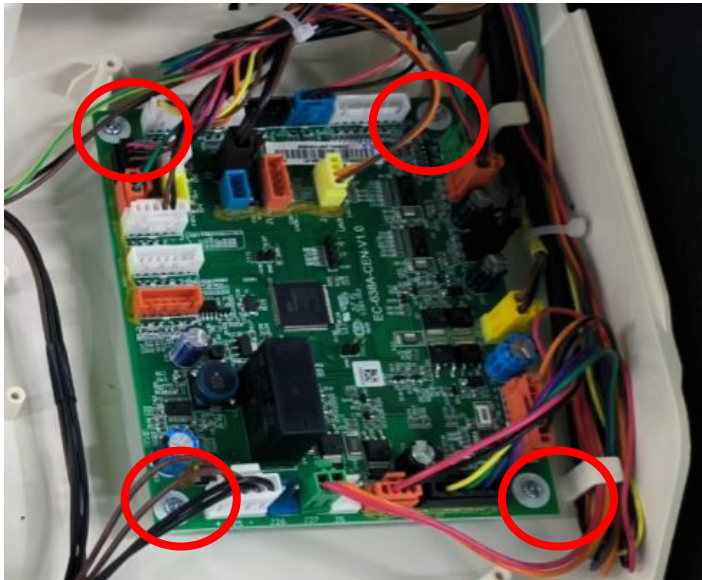
The air valve had been taken down



## 三、Massage chair removal instructions

十二. 中心盒组件的拆卸 disassembly of the main PCB box 将中心盒上盖取出 remove the cover of the main PCB box

A. 中心板的拆卸 disassembly of the main PCB



取出4颗螺丝，拔掉所有端子即可更换中心板  
Remove 4 screws, discontent all the terminals  
Take down the main PCB

B. 电源板的拆卸 disassembly of the power PCBA



取出4颗螺丝，拔掉所有端子即可更换电源板  
Remove 4 screws, discontent all the terminals  
Take down the power PCBA



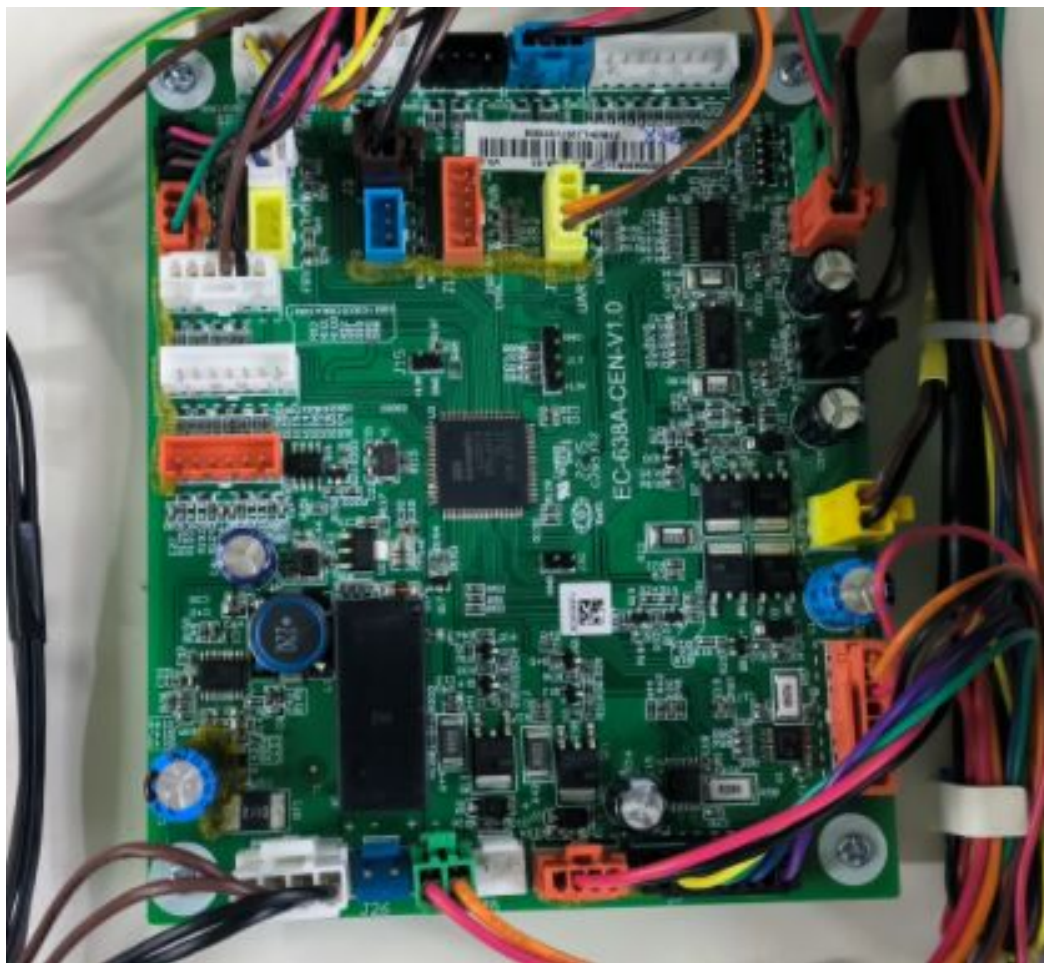


**EASEPAL®**

厦门蒙发利电子有限公司客户服务部

### 三、Massage chair removal instructions

#### 十三. 中心板实物连接图Physical wiring diagram





**EASEPAL**

厦门蒙发利电子有限公司客户服务部

## 四、Massage chair fault judgment

### 2、error code

2	Remote did not connect main PCB over 4 seconds.	The wires between remote and main PCB was poor-contact or broken.	Reconnect or change the wires.	If the error occur,chair will be automatic shutdown.
3	Rolling mechanism did not connect main PCB over 4 seconds.	The wires between rolling mechanism and main PCB was poor-contact or broken.	Reconnect or change the wires.	If the error occur,chair will be automatic shutdown.
5	Keys on remote pressed over 45 seconds.	Keys were stucked.	Check keys.	If the error occur,the remote will alarm for 5 seconds,and will happen again when turn on the chair next time.
6	Footrest board did not connect main PCB over 4 seconds.	The wires between footrest board and main PCB was poor-contact or broken.	Reconnect or change the wires.	If the error occur,chair will be automatic shutdown.
32	Arm pannel controller did not connect main PCB over 4 seconds.	The wires between arm pannel controller and main PCB was poor-contact or broken.	Reconnect or change the wires.	If the error occur,the remote will alarm for 5 seconds,and will happen again when turn on the chair next time.



EASEPAL

厦门蒙发利电子有限公司客户服务部

## 四、Massage chair fault judgment

40	The position sensor of rolling motor in Massage mech is abnormal.Can not test the position changing over 8s.	1.Position sensor was broken. 2.Something wrong with the wires which between main PCB and rolling mechanism board. 3.Rolling motor is broken or stuck. 4.Driving circuit device is broken.	1.Change the sensor. 2.Check the wires. 3.Check and change rolling mechanism. 4.Change main PCB.	(1)start the rolling function (2)If the error occur,chair will be automatic shutdown,and will be not allow to turn on.
41	Rolling motor is in a wrong position.	1.Position sensor was broken. 2.Encoding disk is in a wrong initial position. 3.Massage mech overshoots.	1.Change the sensor. 2.Make the massage mech move to the initial position then dial the encoding disk to the right initial position.	(1)Turn on the chair (2)If the error occur,chair will be automatic shutdown,and will be not allow to turn on.
42	Rolling motor can not detect encoding disk for over 4s.	1.Position sensor was broken. 2.Something wrong with the wires which between main PCB and rolling mechanism board. 3.Rolling motor is broken or stuck. 4.Driving circuit device is broken.	1.Change the sensor. 2.Check the wires. 3.Check and change rolling mechanism. 4.Change main PCB.	(1)start the rolling function (2)If the error occur,chair will be automatic shutdown,and will be not allow to turn on.
44	Kneading motor in massage mech can not detect the encoding disk position for over 8s.	1.Position sensor was broken. 2.Something wrong with the wires which between main PCB and rolling mechanism board. 3.Kneading motor is broken or stuck. 4.Driving circuit device is broken.	1.Change the sensor. 2.Check the wires. 3.Check and change rolling mechanism. 4.Change main PCB.	(1)start the kneading function (2)If the error occur,chair will be automatic shutdown,and will be not allow to turn on.
46	Kneading motor in massage mech can not detect the encoding disk speed for over 5s.	1.Position sensor was broken. 2.Something wrong with the wires which between main PCB and rolling mechanism board. 3.Kneading motor is broken or stuck. 4.Driving circuit device is broken.	1.Change the sensor. 2.Check the wires. 3.Check and change rolling mechanism. 4.Change main PCB.	(1)Start the kneading function (2)If the error occur,chair will be automatic shutdown,and will be not allow to turn on.
48	The 4D extend motor in massage mech can not detect the encoding disk position for over 10s.	1.Position sensor was broken. 2.Something wrong with the wires which between main PCB and rolling mechanism board. 3.4D extend motor is broken or stuck. 4.Driving circuit device is broken.	1.Change the sensor. 2.Check the wires. 3.Check and change rolling mechanism. 4.Change main PCB.	(1)Start the 4D function (2)If the error occur,chair will be automatic shutdown,and will be not allow to turn on.





**EASEPAL**

厦门蒙发利电子有限公司客户服务部

## 四、Massage chair fault judgment

49	The 4D extend motor in massage mech is abnormal. The encoding disk is in a wrong position.	1.Position sensor was broken. 2.Encoding disk is in a wrong initial position 3.Massage mech overshoots.	1.Change the sensor. 2.Make the massage mech move to the initial position then dial the encoding disk to the right initial position.	(1)Start the 4D function (2)If the error occur,chair will be automatic shutdown,and will be not allow to turn on.
50	Speed sensor for the 4D extend motor is abnormal.	1.Position sensor was broken. 2.Something wrong with the wires which between main PCB and rolling mechanism board. 3.4D extend motor is broken or stuck. 4.Driving circuit device is broken.	1.Change the sensor. 2.Check the wires. 3.Check and change rolling mechanism. 4.Change main PCB.	(1)Start the 4D function (2)If the error occur,chair will be automatic shutdown,and will be not allow to turn on.
59	Backrest Reclining Actuator. Counting sensor is abnormal.	1.Counting sensor is broken 2.Abnormal wire connection. 3.Motor is broken or stuck. 4.Driving circuit device is broken.	1.Change the sensor. 2.Check the wires. 3.Check and change rolling mechanism. 4.Change main PCB.	enter auto-check model
63	Legrest Actuator. Counting sensor is abnormal.	1.Counting sensor is broken 2.Abnormal wire connection. 3.Motor is broken or stuck. 4.Driving circuit device is broken.	1.Change the sensor. 2.Check the wires. 3.Check and change rolling mechanism. 4.Change main PCB.	enter auto-check model
68	Legrest Extend Actuator. Counting sensor is abnormal.	1.Counting sensor is broken 2.Abnormal wire connection. 3.Motor is broken or stuck. 4.Driving circuit device is broken.	1.Change the sensor. 2.Check the wires. 3.Check and change rolling mechanism. 4.Change main PCB.	(1)Turn on the chair (2)If the error occur,the remote will alarm for 5 seconds,and will happen again when turn on the chair next time.

**EASEPAL®**

厦门蒙发利电子有限公司客户服务部

#### 四、Massage chair fault judgment

69	Legrest Extend Actuator. Detect signals from longest and shortest limit sensor at the same time.	1.Position sensor broken. 2.Abnormal wire connection.	1.Change the sensor. 2.Check the connection.	(1)Start the legrest extend function (2)If the error occur,chair will be automatic shutdown,and will be not allow to turn on.
70	Legrest Extend Actuator. The shortest limit sensor is broken.	1.Position sensor broken. 2.Abnormal wire connection.	1.Change the sensor. 2.Check the connection.	(1)Start the legrest extend function (2)If the error occur,chair will be automatic shutdown,and will be not allow to turn on.
71	Legrest Extend Actuator. The longest limit sensor is broken.	1.Position sensor broken. 2.Abnormal wire connection.	1.Change the sensor. 2.Check the connection.	(1)Start the legrest extend function (2)If the error occur,chair will be automatic shutdown,and will be not allow to turn on.
72	Heating function. TheMOSFETshortcircuit.Detectedthetemperatureisover 78℃formorethan10s.	The MOSFET short circuit, overcurrent.	(1)Check or change main PCB. (2)Check the black and grey wires as well as rolling mechanism whether open circuit or not.If so,pls change black and grey wires or rolling mechanism.	(1)Turn on the chair. (2)If the error occur,the remote will alarm for 5 seconds,and will happen again when turn on the chair next time.
73	Heating function. NTC short circuit.	NTC short circuit.	Check the black and grey wires as well as rolling mechanism whether open circuit or not.If so,pls change black and grey wires or rolling mechanism.	(1)Turn on the chair. (2)If the error occur,the remote will alarm for 5 seconds,and will happen again when turn on the chair next time.



**EASEPAL®**

厦门蒙发利电子有限公司客户服务部

#### 四、Massage chair fault judgment

74	Heating function. NTC open circuit.	NTC open circuit.	Check the black and grey wires as well as rolling mechanism whether open circuit or not.If so,pls change black and grey wires or rolling mechanism.	(1)Turn on the chair. (2)If the error occur,the remote will alarm for 5 seconds,and will happen again when turn on the chair next time.
----	--	-------------------	---	--