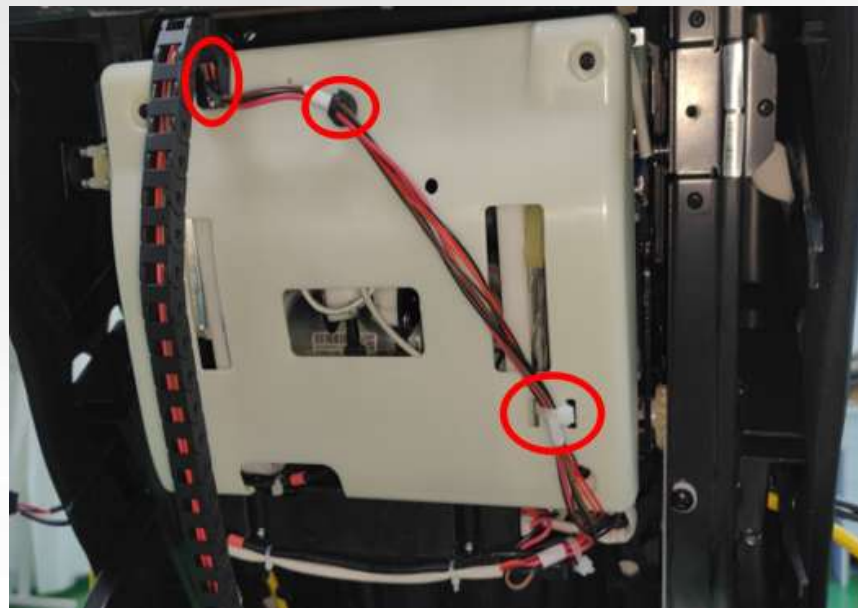


7506E背架线拆卸

(Disconnect the wiring for the movement.)



1. 拆卸4颗螺丝取下后盖
Remove the four screws
to take off the back cover.



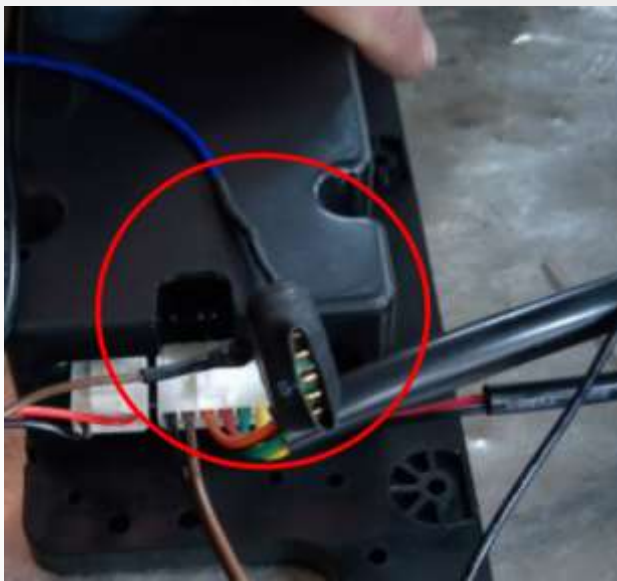
2. 拆卸2颗螺丝并剪掉扎扣
You need to remove 2 screws
and cut off the buckle.



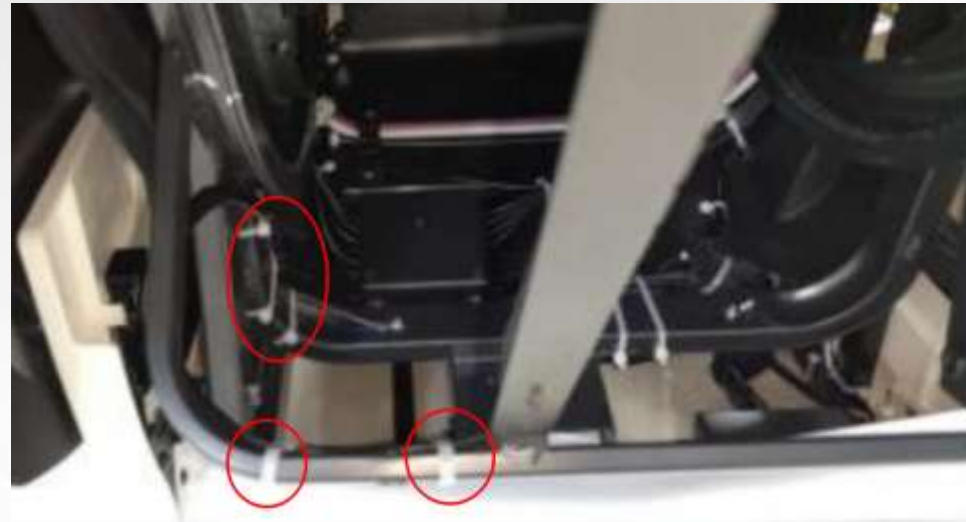
3. 断开端子
Disconnect the terminal.



4. 断开端子
Disconnect the terminal.



5.剪掉地线, 安装时请对接地线并用电工胶带缠绕
When installing, please connect the grounding wire and wrap it with electrical tape.



6.剪掉扎扣
Cut off the buckle.



7.拆卸2颗螺丝
Remove 2 screws.



8.断开端子并拆卸1颗地线螺丝
Disconnect the terminal and remove one ground screw.



9.背架线
Cable for the movement