

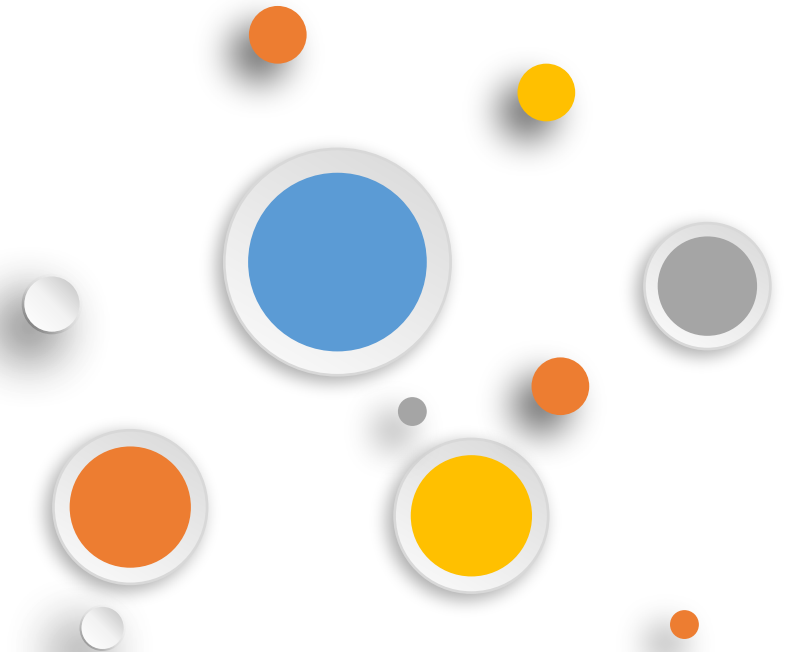
EC-3211A-TITmassage chair service guide





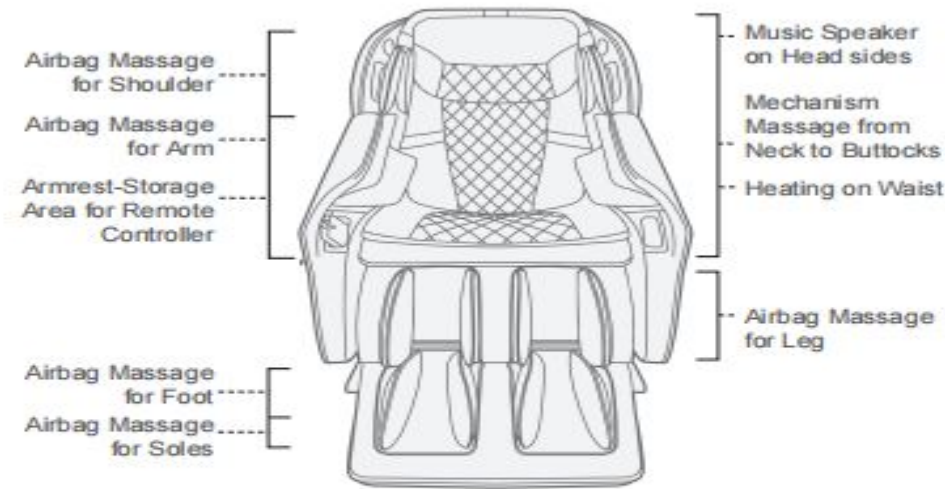
Table of Contents

- 一、Product introduction
- 二、Massage chair tools and use
- 三、Circuit working principle
- 四、Massage chair removal instructions
- 五、Massage chair fault judgment





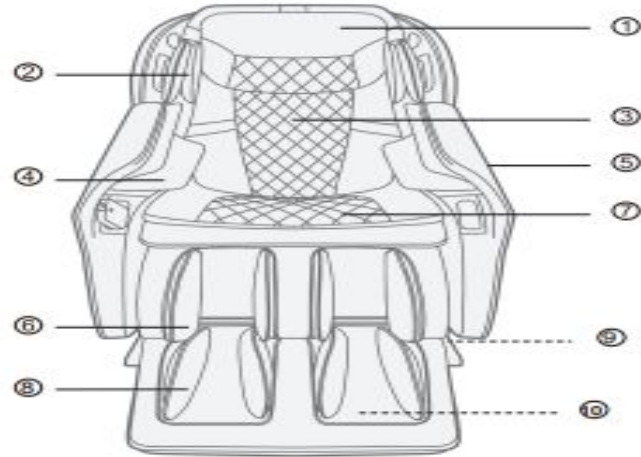
一、Product introduction





1、position of air massage:

Front



- ① Pillow Pad
- ③ Backrest Pad
- ⑤ Side Panel
- ⑦ Seat Pad
- ⑨ Wheel

- ② Shoulder Airbag
- ④ Arm Airbag
- ⑥ Leg Airbag
- ⑧ Foot Airbag
- ⑩ Foot Roller



2、specifications of the products :

| Description | Specifications |
|-----------------------------|------------------------------------|
| Model No. | Osaki Vista |
| Rated Voltage | 110-120V~ |
| Rated Frequency | 60Hz |
| Rated Power Consumption | 80W |
| Timer | 5/10/15/20/25/30 minutes |
| Rated Time | 15 minutes |
| Dimensions(L x W x H) | Upright: 58.7 x 29.5x 43.7 in |
| | Reclined: 70.5 x 29.5x 31.9 in |
| Weight | Gross Weight: 204.1 lbs |
| | Net Weight: 154.3 lbs |
| Length of Wire | Controller wire: 32" |
| | Power supply wire: 70.9" |
| Usage Condition | Environment temperature: 32°F~95°F |
| | Contrasting humidity: 20-80RH |
| Storage Condition | Storage temperature: 32°F~95°F |
| | Storage humidity: 20-80RH |
| Safety Feature | Equipped with overheated and power |
| Maximum body weight of user | 264 lbs |

This equipment contains a certified radio transmission module :

FCC ID : 2A006-WLT3266



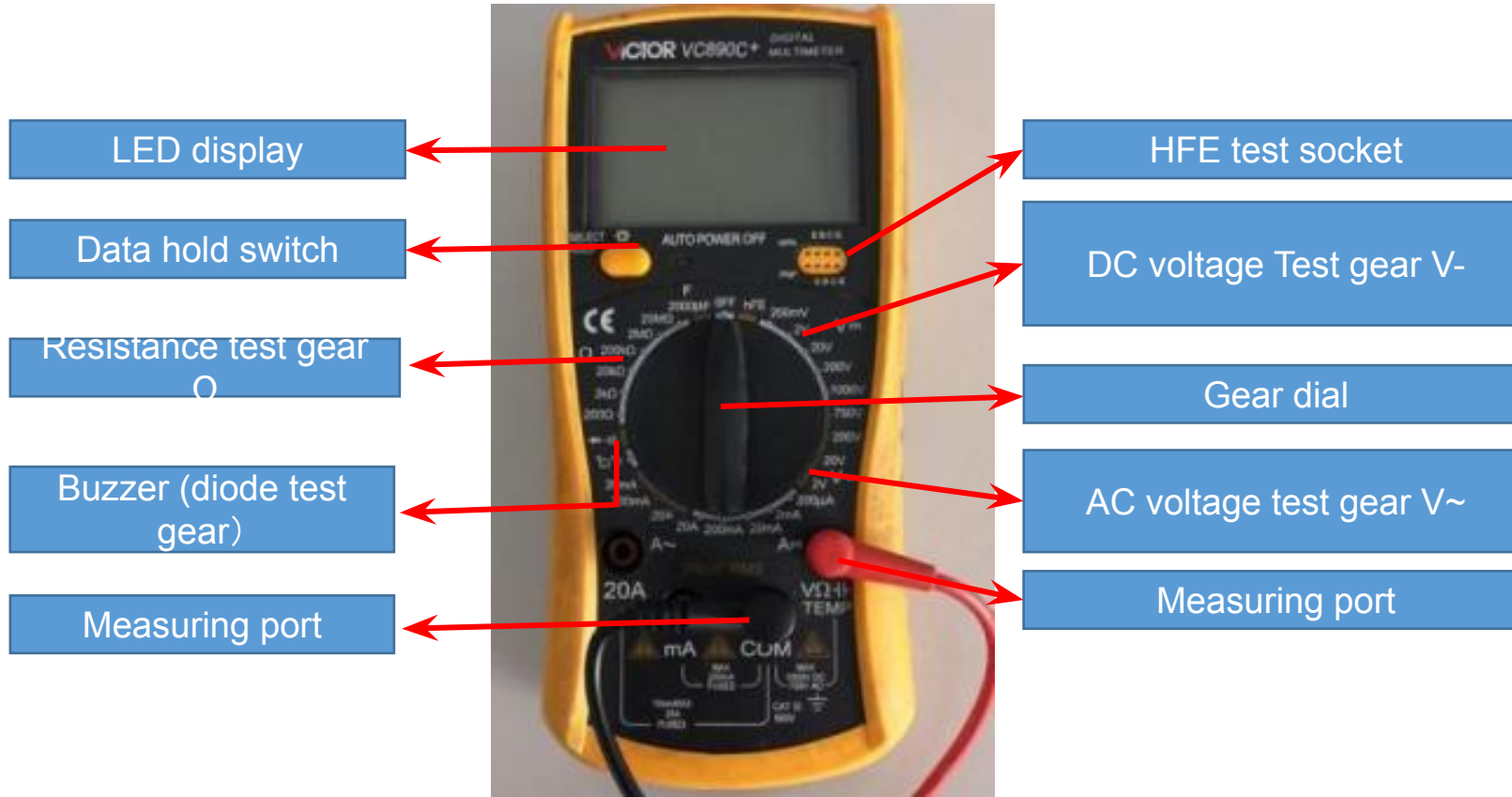
二、Massage chair tools and use

1.tools

| | | | | | |
|--|--|---|--|--|--|
|  |  |  |  |  |  |
| Screwdriver size 1,2,3 | Diagonal cutter and long nose pliers | Soldering Kit | Spanner tools Kit | Test pen | Allen Key set |
|  |  |  |  |  |  |
| Ratchet Tools Set | 24V/DC power | Electric Driver | electrical adhesive tape | Cable Ties | WIRE ONECTORS |



2.Usage of multimeter





2.1、Function of the test gears

Data hold switch : Memorize the measured data for comparison。

Buzzer (diode test gear) : Measure the quality of diode, the on-off and alarm function of circuit

Resistance gear test gear : Measure the quality and value of resistance

DC voltage Test gear V- : Measure DC voltage

AC voltage test gear V~ : Measure AC voltage

VΩ / COM : VΩ Red pen port (+ pole) during test, black pen port (- pole) during com test

Note: when carrying out resistance or voltage test, it is necessary to select a suitable range. If the range is too small to be measured, and the range is too large, the test error range is large; if the voltage is not known, it is necessary to select a range measurement with a large windlass.



2.2、On / off measurement of lines



open circuit

As shown in the left picture, first set the multimeter to the buzzer and power it
When the switch is on, the multimeter will display "0."; then contact the two probes with the ends of the red wire
At this time, the multimeter still shows "1." there is no change, which means there is an open circuit in the middle of the wire, that is, the line is open.



close circuit

As shown in the picture on the left, if the multimeter shows the number of ". 002" or ". 00n" and gives an alarm, it means that the wire is connected.

2.3、Measurement of AC voltage



As shown in the picture above: measure the household plug-in board power supply (220V), select the range of 750, and the test result shows "224", indicating that the actual voltage of this group of sockets is 224v at the moment (the switch is pressed down, so there is power, and the light is on).



As shown in the above picture: measure the power supply (220V) of our household plug-in board, select the range of 750, and the test result is displayed as "001", indicating that the actual voltage of this group of sockets is 0V at the moment (the switch is not pressed down, so there is no power, and the light is not on).

2.4、Measurement of dc voltag



As shown in the figure above: the test result shows "1.58", indicating that the voltage at both ends of the battery has 1.58V, and the red watch pen is connected to the battery's "+" pole, while the black pen is connected to the electromagnetic "-" pole.



As shown in the figure above: the test result shows "-1.58", indicating that the voltage at both ends of the battery has 1.58V, and the red watch pen is connected to the battery "-" pole, and the black pen is connected to the electromagnetic "+" pole.

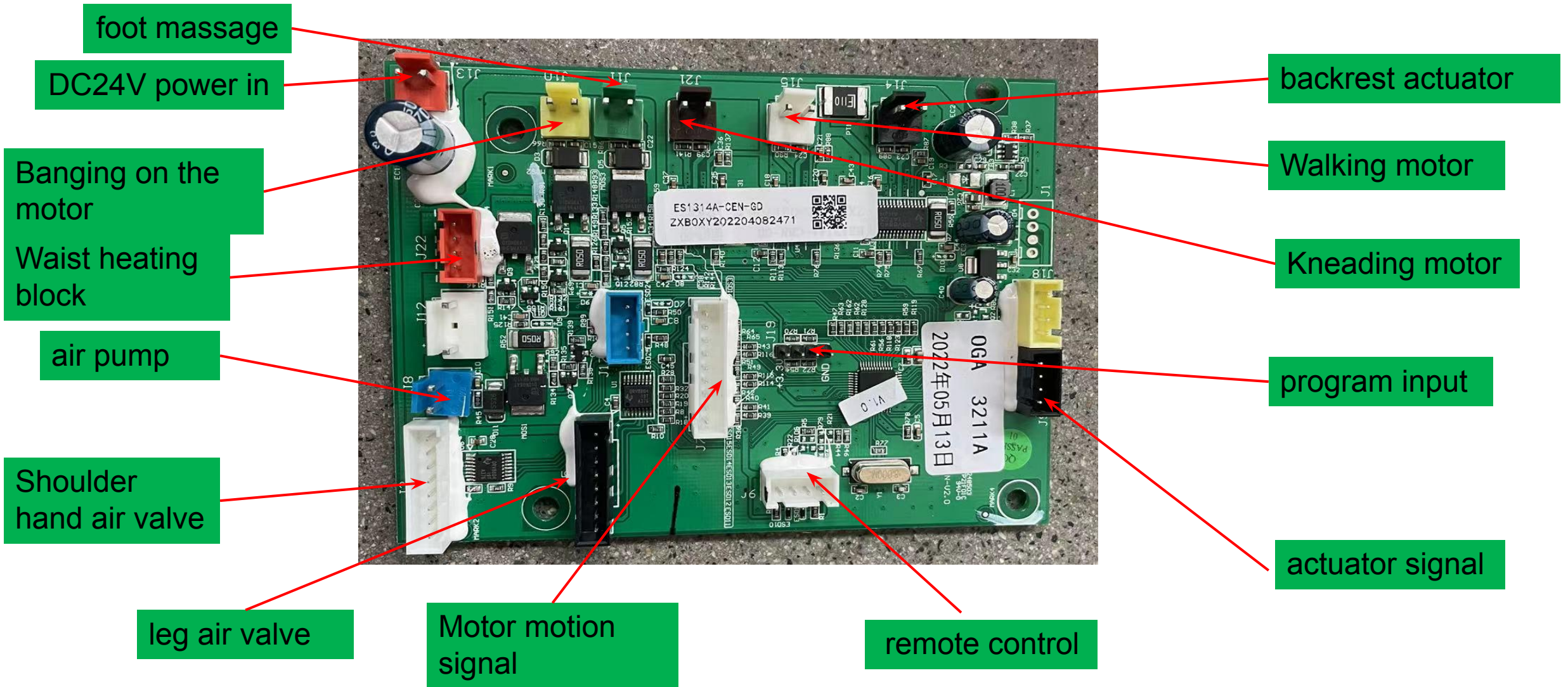


EASEPAL

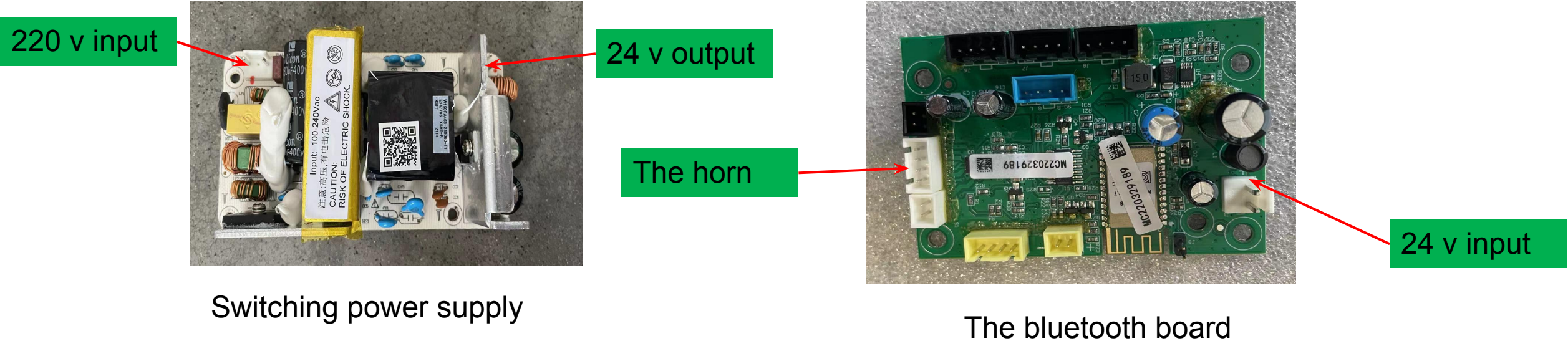
厦门蒙发利电子有限公司客户服务部

1、main PCB:

三、Circuit working principle



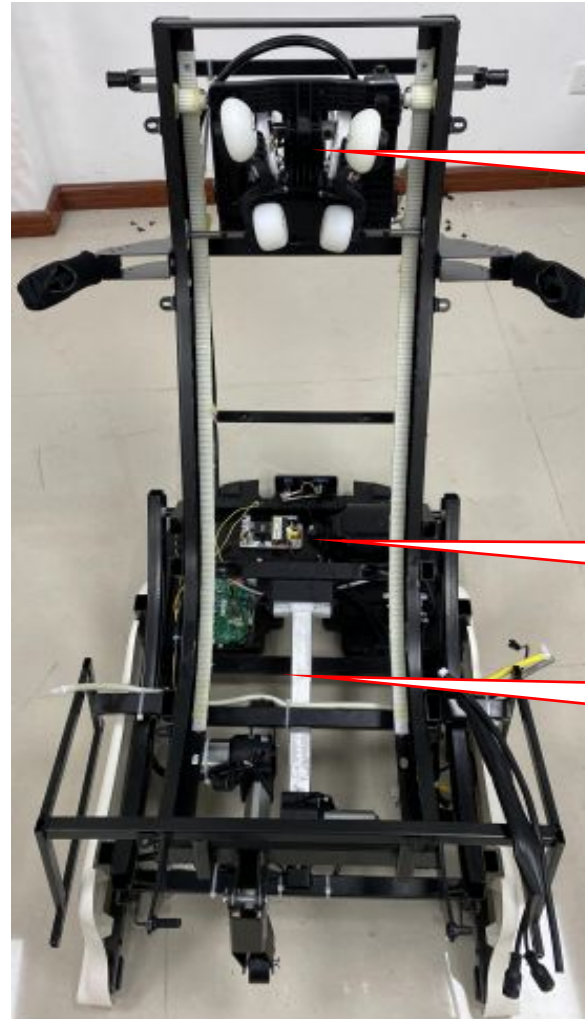
2、 Remove the switching power supply and Bluetooth board:





四、Massage chair removal instructions

1、The internal structure:



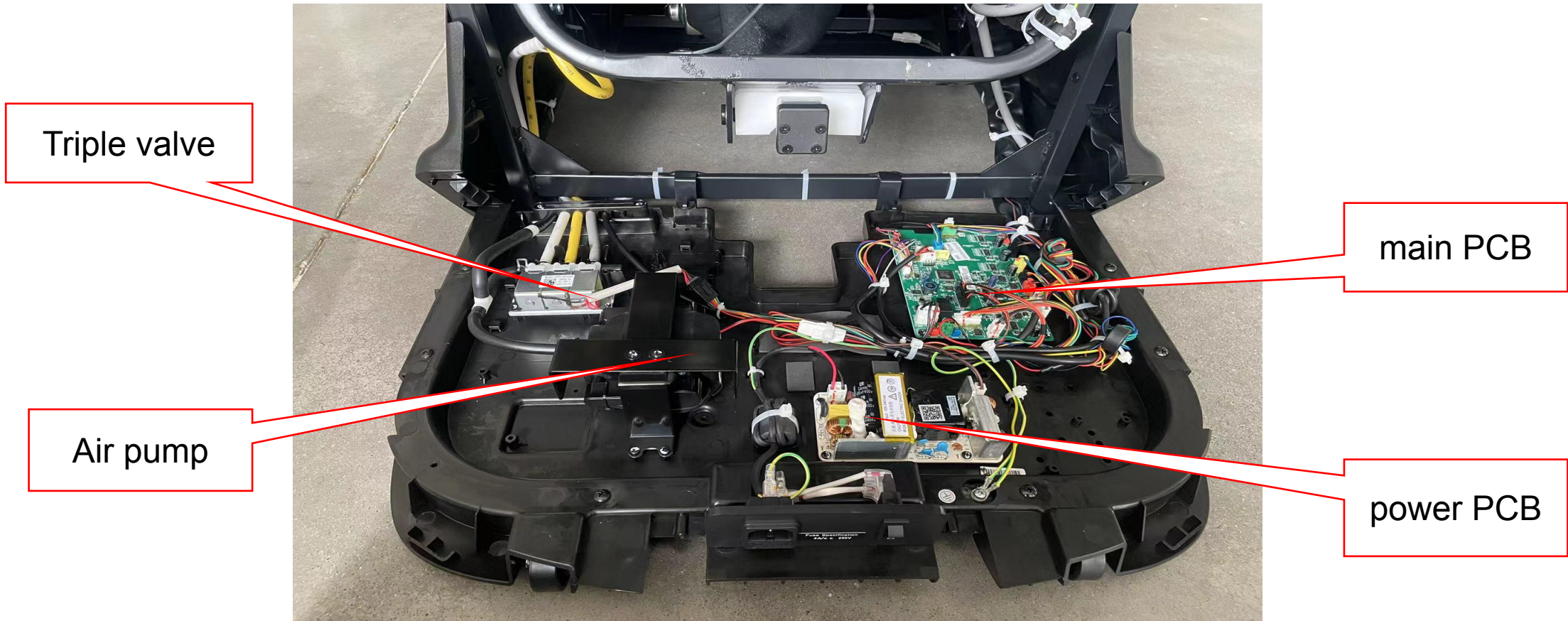
Massage motor

The center box

Backrest motor

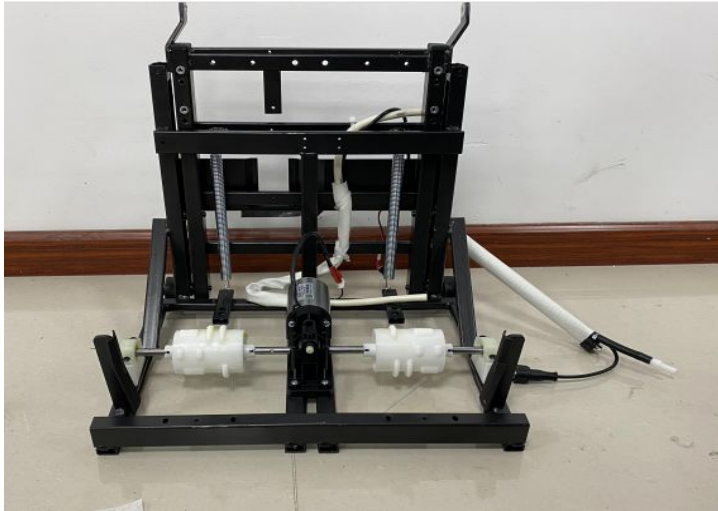


1.1、main pcb the internal structure :





2、Leg structure:



Internal leg structure



Crus components



Upper calf assembly



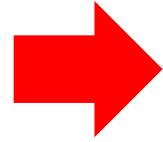
Lower calf assembly



3.1 disassembly of the pillow:



unzip the zipper



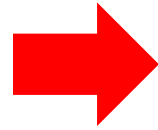
The pillow



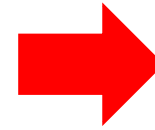
3.2disassembly of the backrest pad:



unzip the zipper



Cut the tie disconnect terminal



unzip the zipper



take down backrest pad



EASEPAL

厦门蒙发利电子有限公司客户服务部

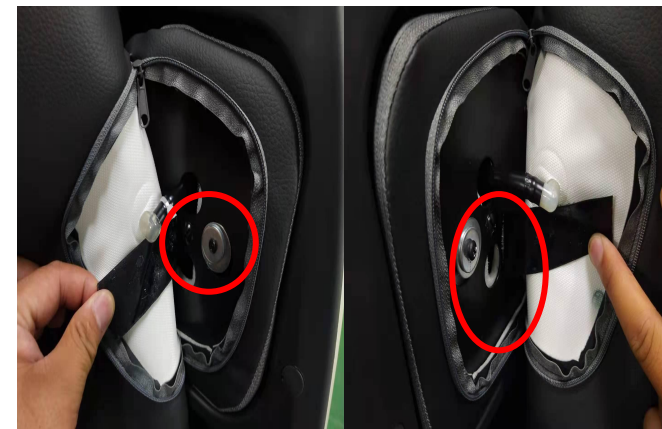
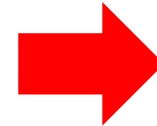
3.3 disassembly of the side panel:



unzip the zipper both side



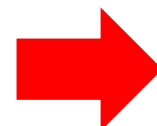
Tear tape



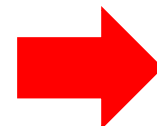
Remove 2 screws from left and right shoulder



Lift calf and remove 2 screws



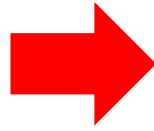
Remove 3 plugs



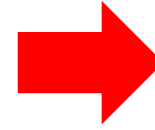
Remove 3 screws



Remove molded parts



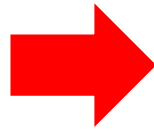
Remove 6 screws



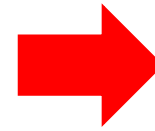
Remove 5 screws



Remove the inside injection parts



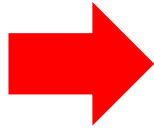
Extract the right plate upward



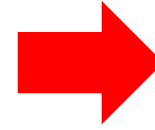
Disconnect the terminal and air pipe



Right panel assembly



Extract the left plate
upward



Disconnect the trachea



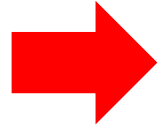
Left panel assembly



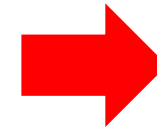
3.4 disassembly of the inner right side panel



unzip the zipper



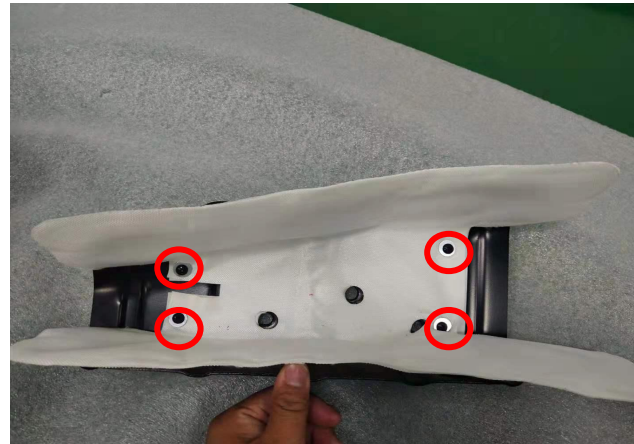
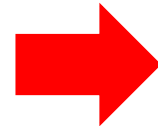
Remove the air bag and cut the tie to disconnect the trachea



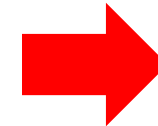
Remove 3 screws



Remove the handrail holster



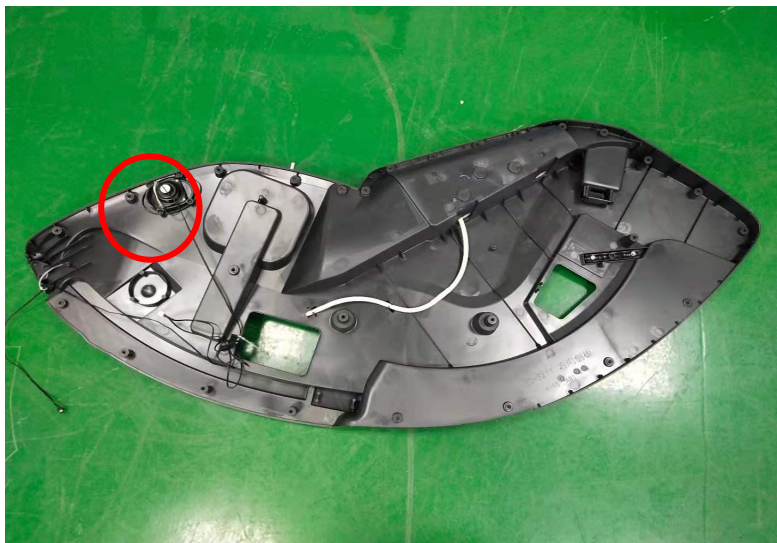
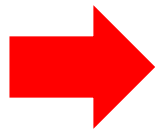
Remove 3 screws



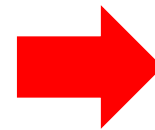
air bag of hand had been taken down



Remove the 13 plugs and 27 screws, and remove the outer cover of the side panel



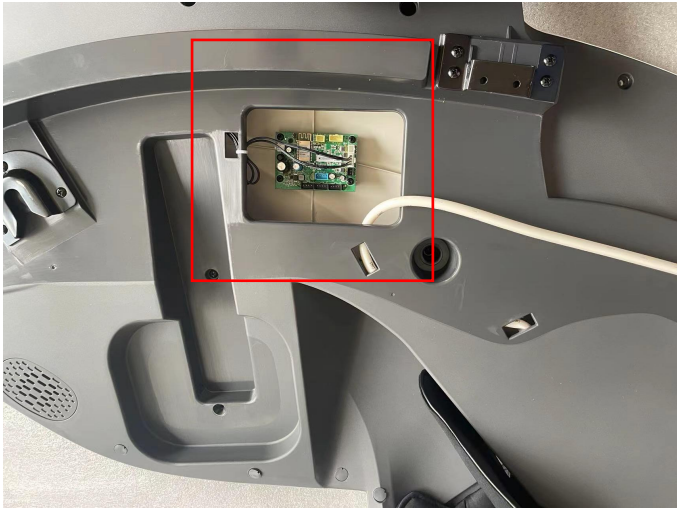
Remove 4 screws from horn, Disconnect the two terminals



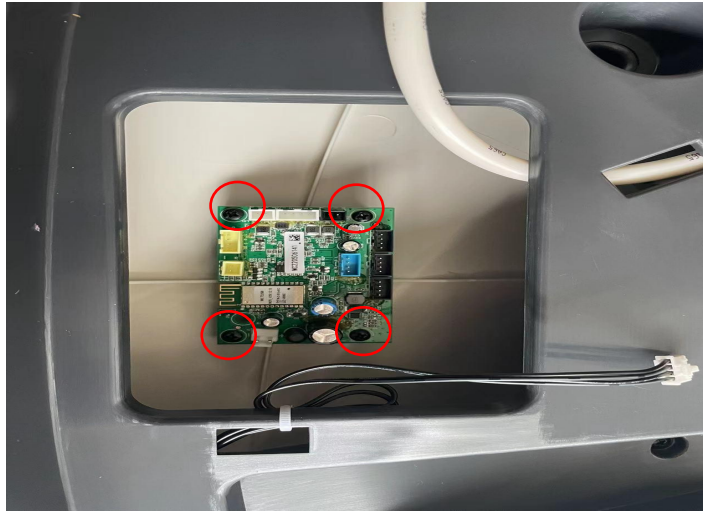
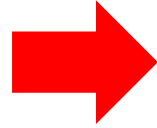
horn



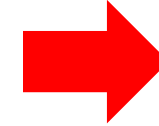
3.5 Removing the Bluetooth Board:



Bluetooth Board position



Remove 4 screws



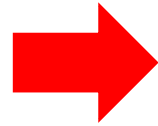
bluetooth board



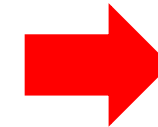
3.6 Remove shoulder holster



Remove 2 screws and disconnect the air pipe



The shoulder holster



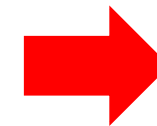
Open the holster



Remove 2 screws



airbag



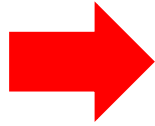
holster



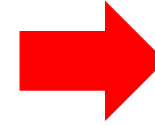
3.7disassembly of remote control



cut the cable ties



cut the cable ties and
disconnect the terminals



remote control



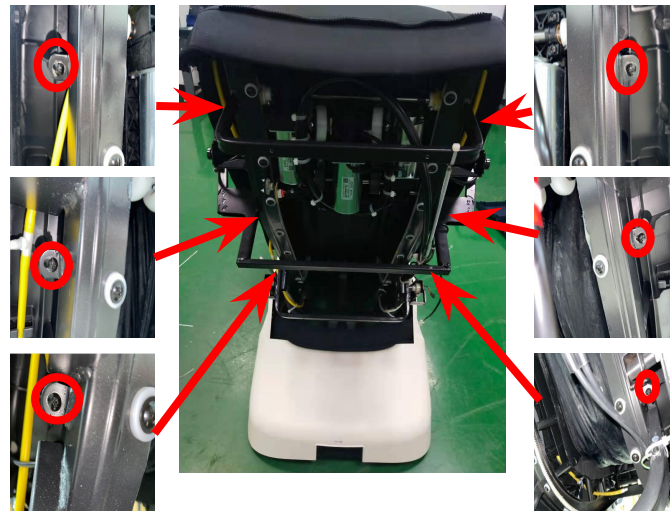
EASEPAL

厦门蒙发利电子有限公司客户服务部

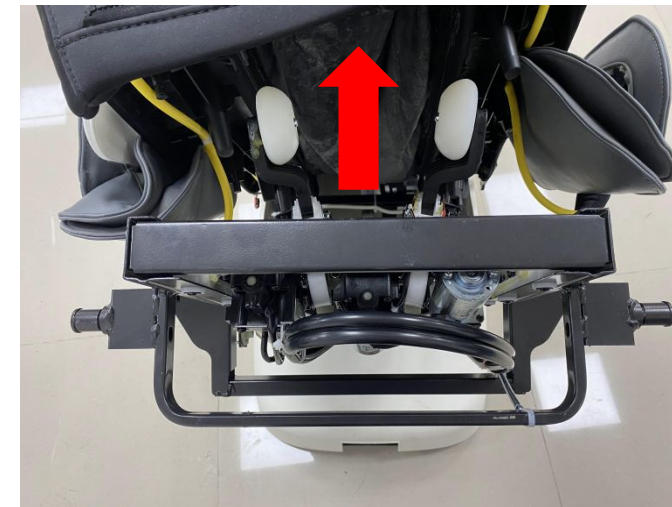
3.8 Replacing massage mechanism



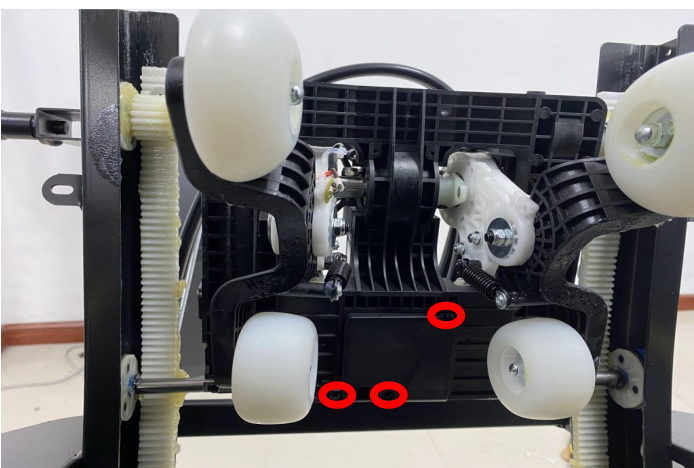
Remove 4 screws



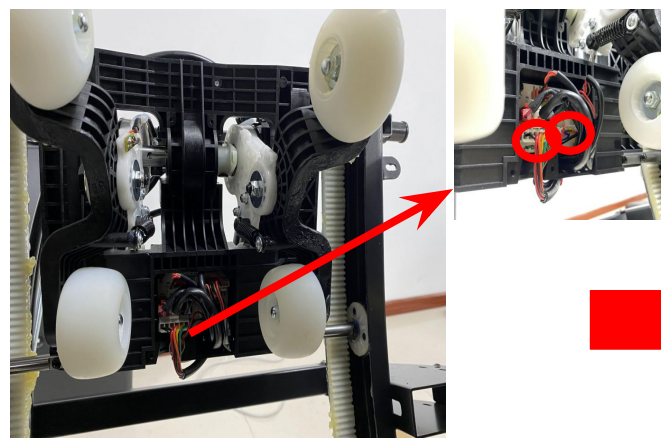
Remove 6 screws on backrest



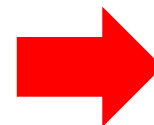
Push the backrest forward



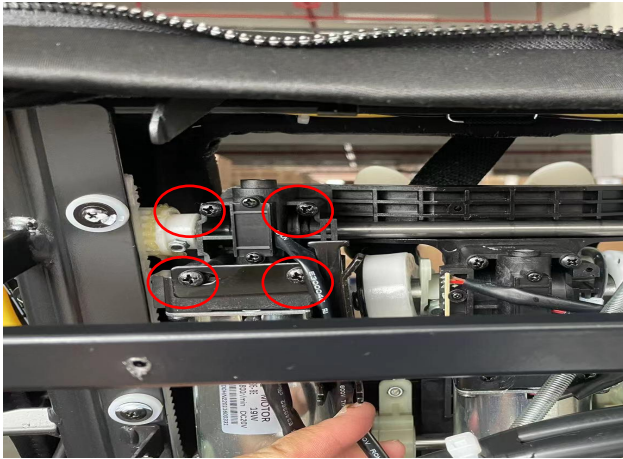
Remove 3 screws



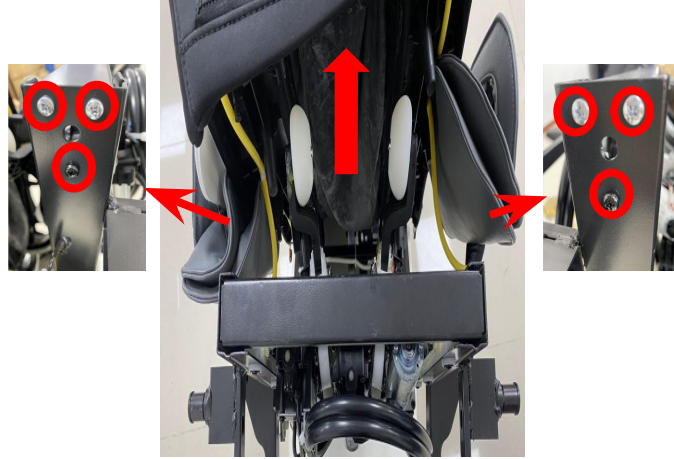
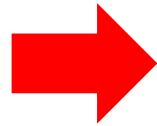
Disconnect the terminals



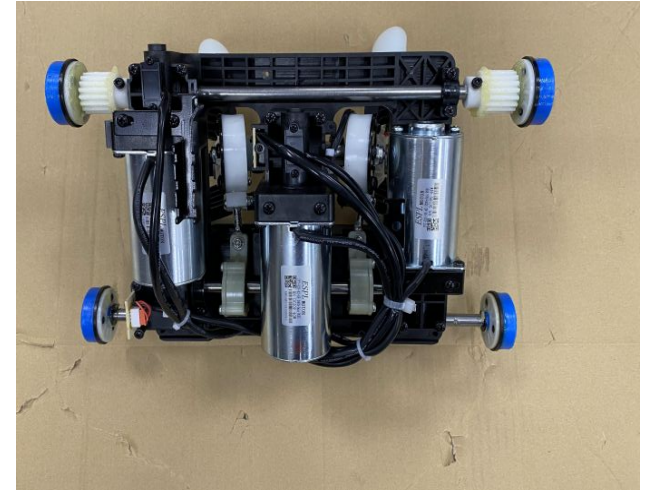
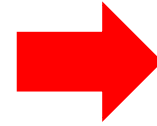
cut the cable ties remove 4 screws



Remove motor 4 screws



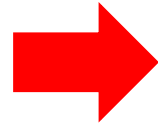
Remove 4 screws and 2 anti-impact screws



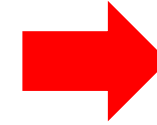
massage mechanism



Remove 4 screws



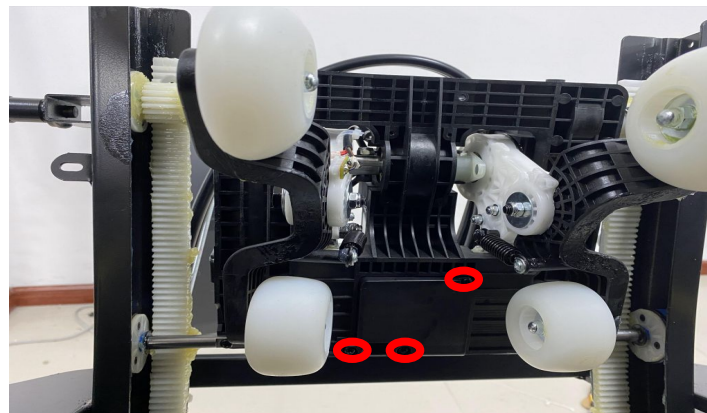
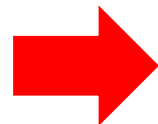
cut the cable ties and remove 4 screws



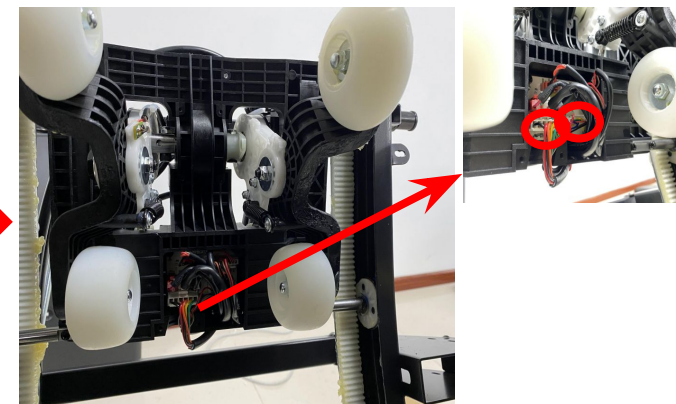
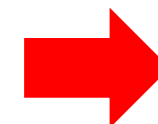
Remove 6 screws on backrest



Push the backrest forward



Remove 3 screws



Disconnect the terminals



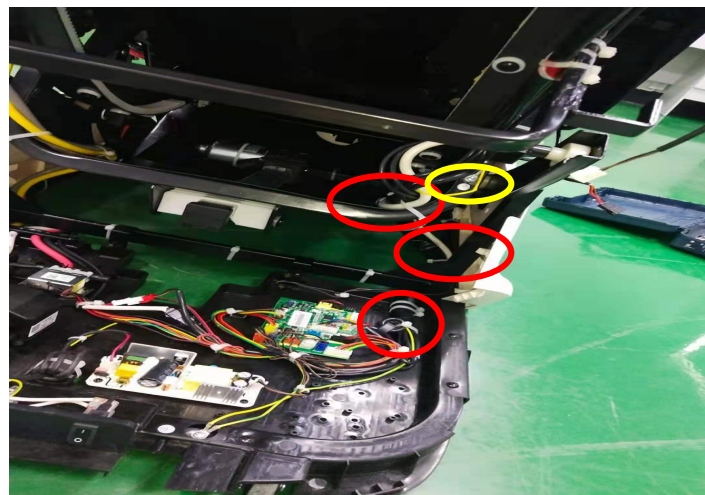
EASEPAL

厦门蒙发利电子有限公司客户服务部

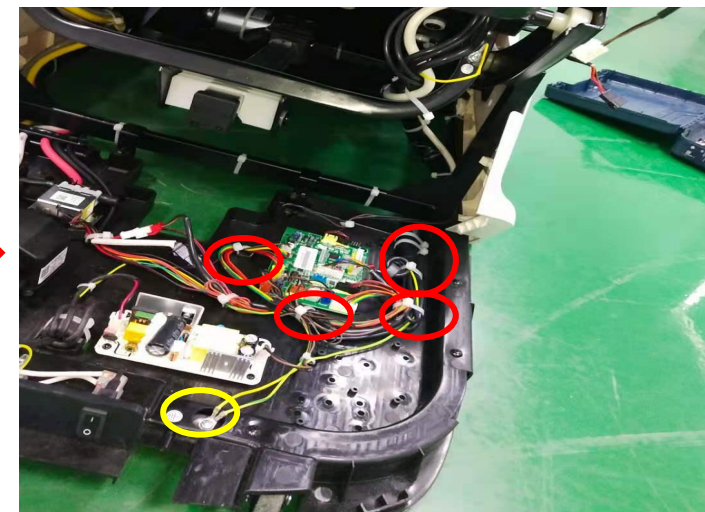
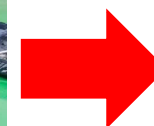
3.9 Remove the backrest wire



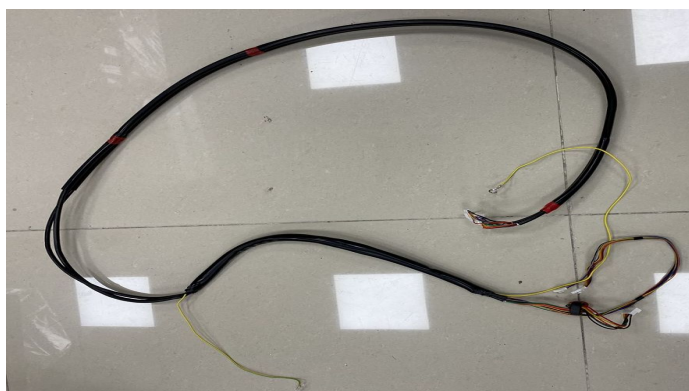
Remove 2 screws and remove center box cover



cut the cable ties and Remove 1 ground screw



cut the cable ties and Remove 1 ground screw



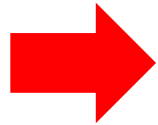
backrest wire



4.1 The travel signal board is removed:



Remove 4 screws



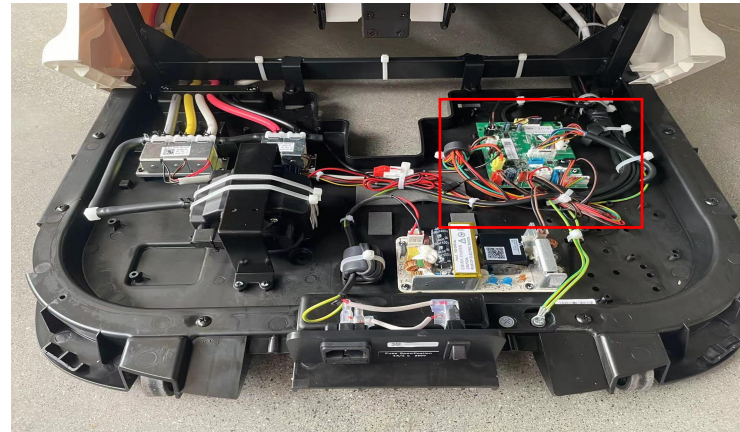
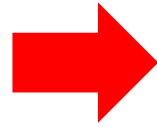
Remove 2 screw disconnect terminals



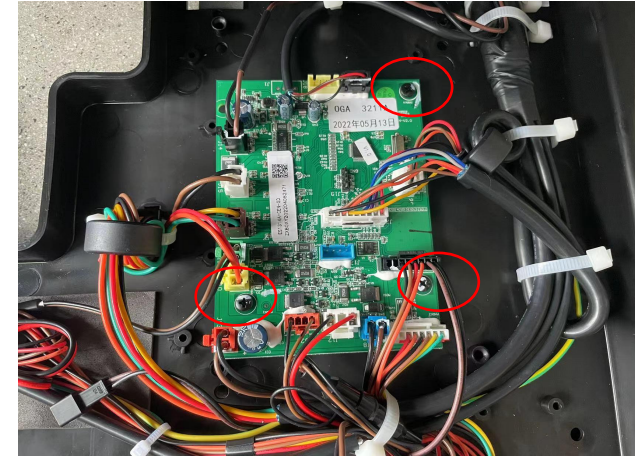
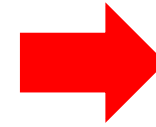
4.2 disassembly of main PCB box:



Remove the 2 screws and remove the top cover of the center box



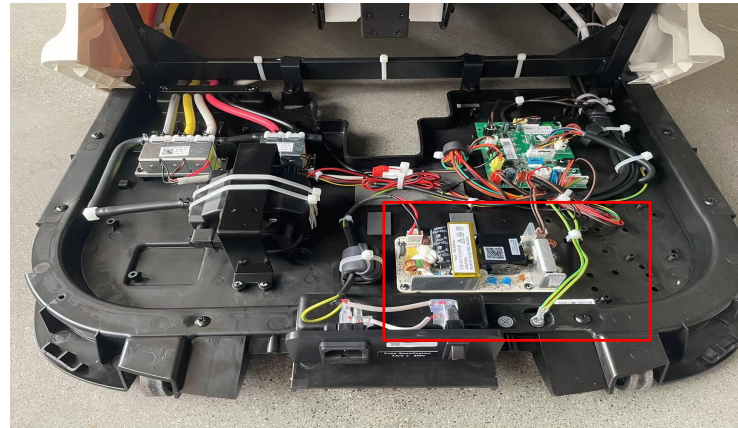
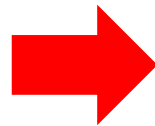
Main PCB position



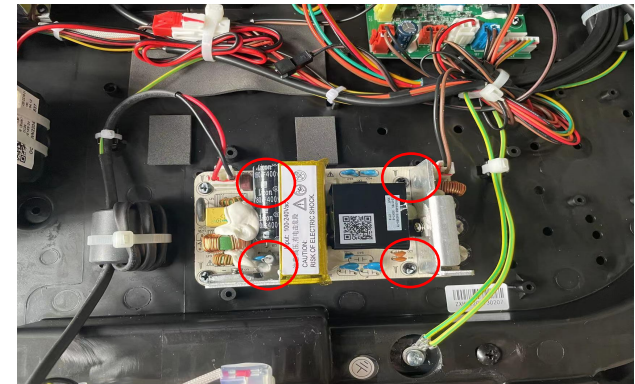
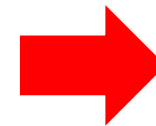
Remove 3 screws to disconnect all terminals



Main PCB



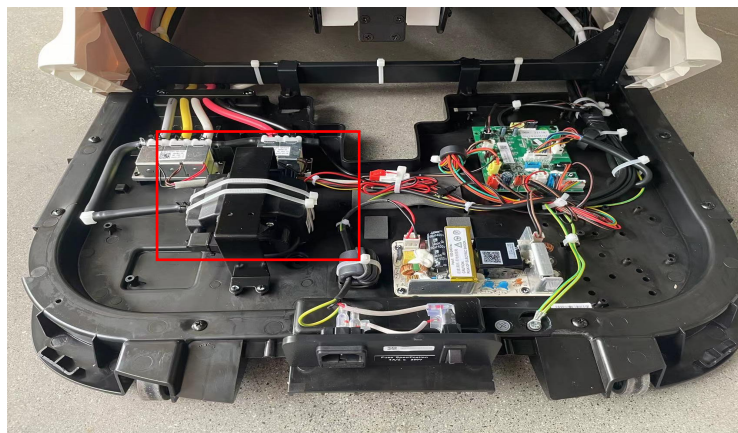
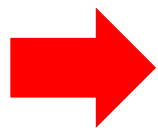
power PCB position



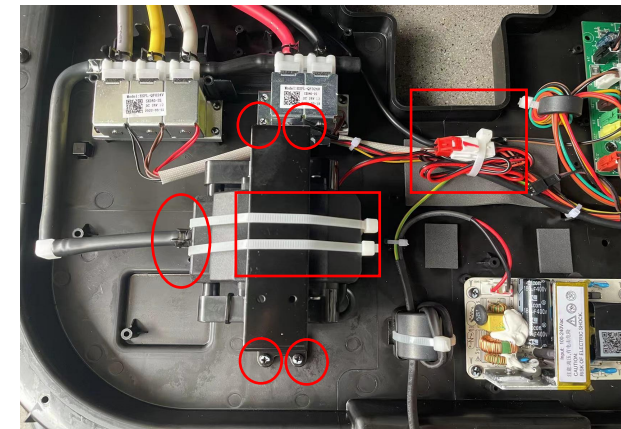
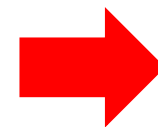
Remove 4 screws and disconnect 2 terminals



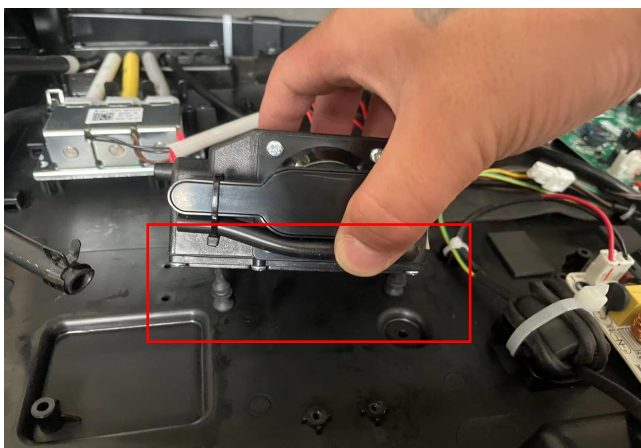
power PCB



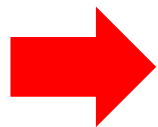
Position of the inflator pump



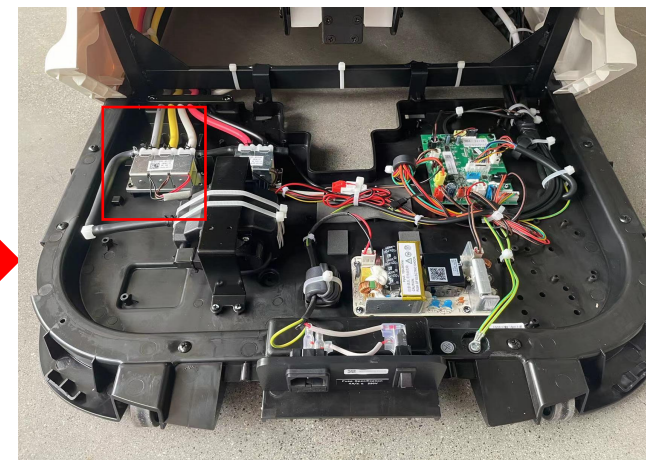
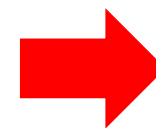
Remove 4 screws to disconnect the air pipe, cut the cable ties and Disconnect the terminals



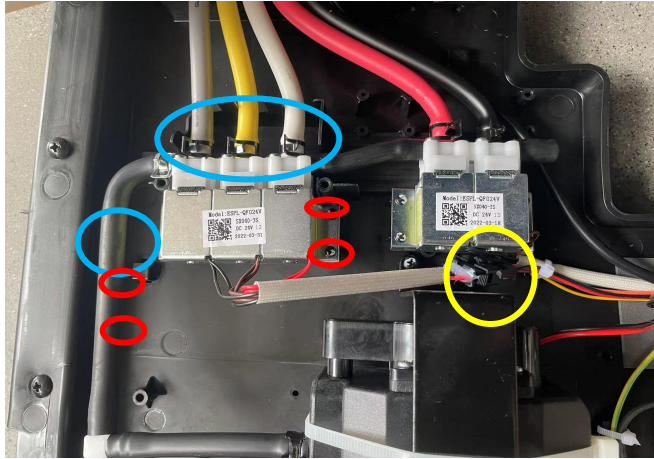
Pull out the rubber column



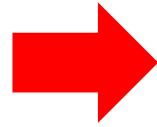
Air pump



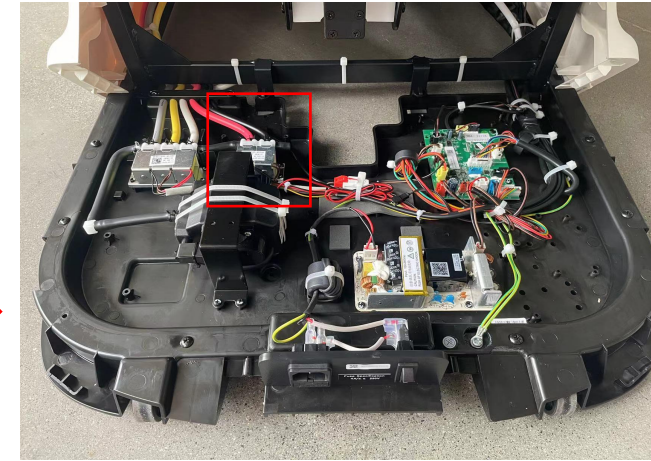
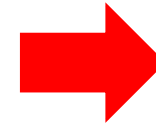
Air valve



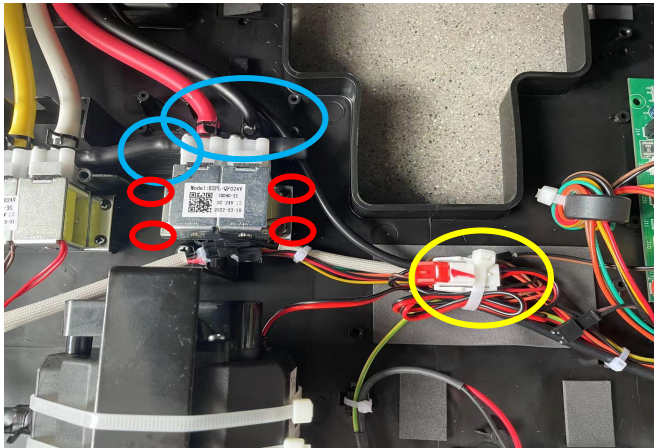
Disconnect the air pipe, disconnect the terminal



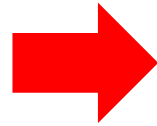
Air valve



Air valve



Pull out 3 air pipes, remove 4 screws and pull out 1 terminal



Air valve



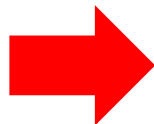
EASEPAL

厦门蒙发利电子有限公司客户服务部

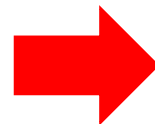
4.3 Crus disassembly:



unzip the zipper



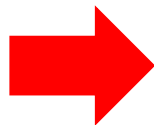
remove 2 bolt



Remove the lower leg to the right



Disconnect the terminal and air pipe



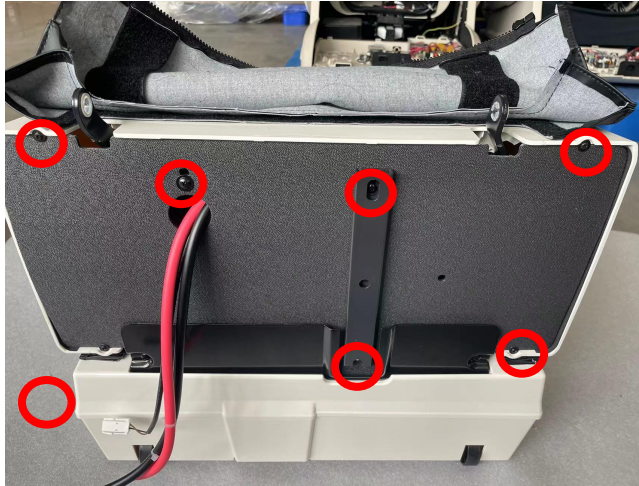
Crus components



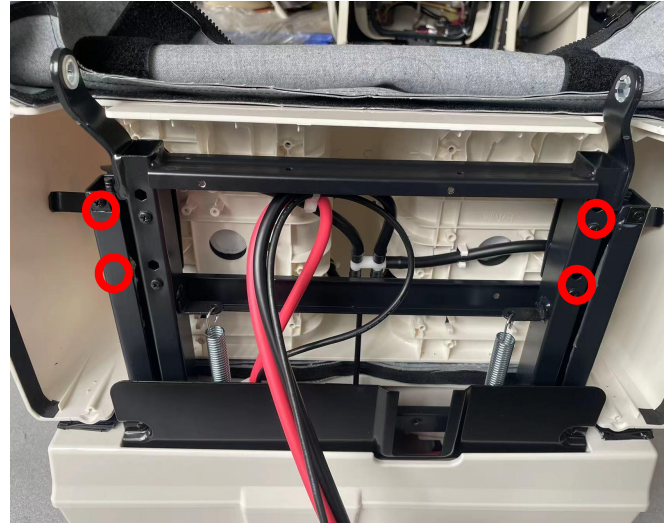
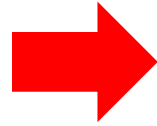
EASEPAL

厦门蒙发利电子有限公司客户服务部

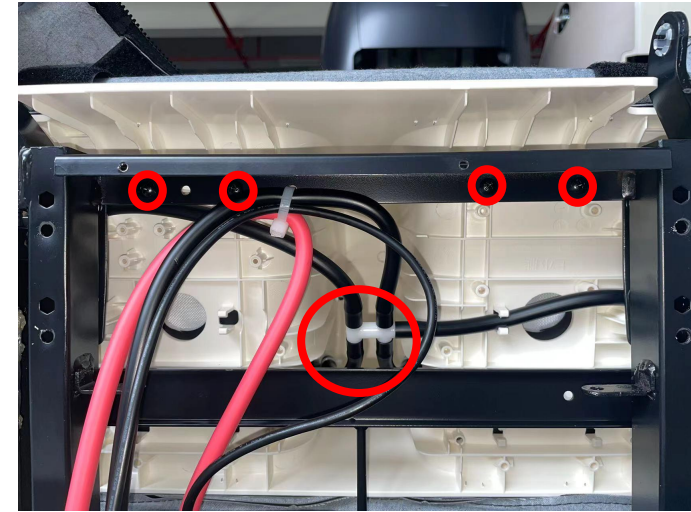
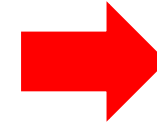
4.4 Upper calf assembly removed



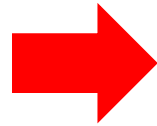
Remove the 7 screws and remove the cover



Remove the 4 screws



Disconnect the air pipe and remove 4 screws



unzip the zipper



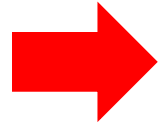
Remove upper calf assembly



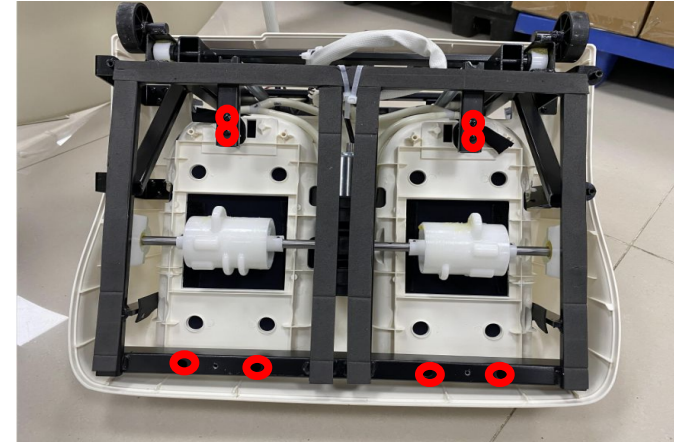
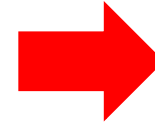
4.5 Lower calf assembly removed



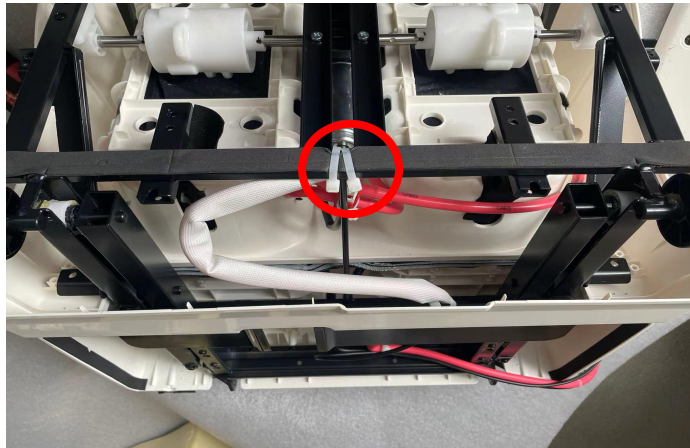
Remove 4 rubber plugs



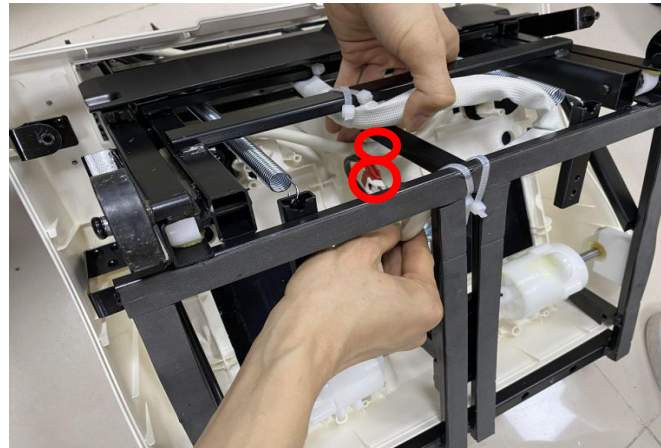
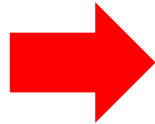
Remove 4 screws



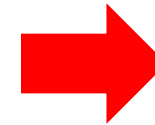
Remove 8 screws



cut the cable ties



Disconnect the terminal and air pipe



Remove the 4 screws and hardware



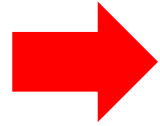
Lower shank assembly



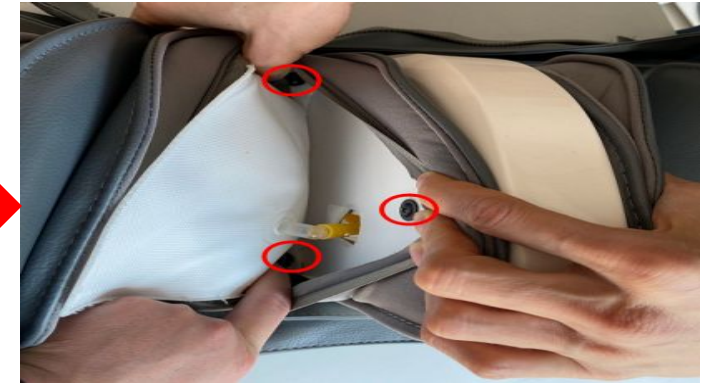
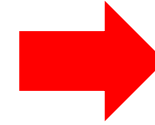
4.6 Internal removal of upper leg assembly



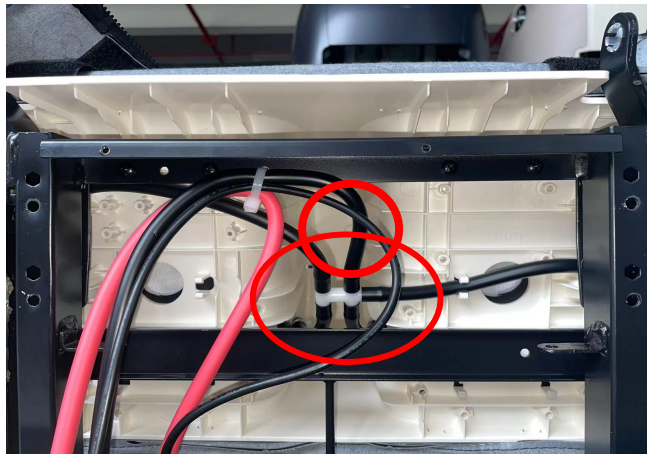
unzip the zipper



Remove 4 screws



Remove 4 screws

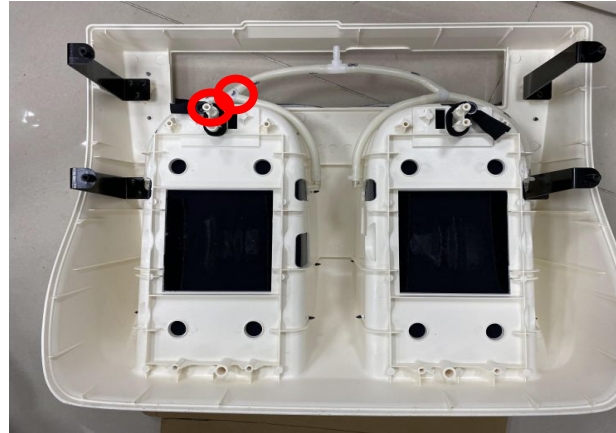
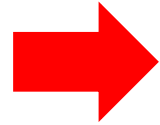


Remove the trachea and remove the air bag and holster

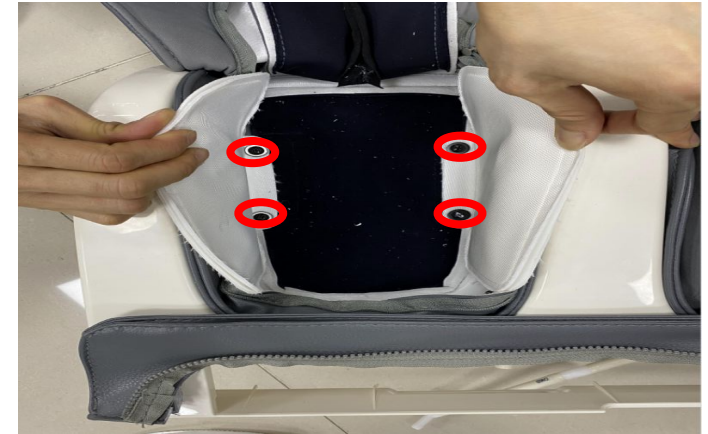
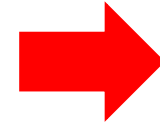
4.7 Lower leg assembly internal disassembly



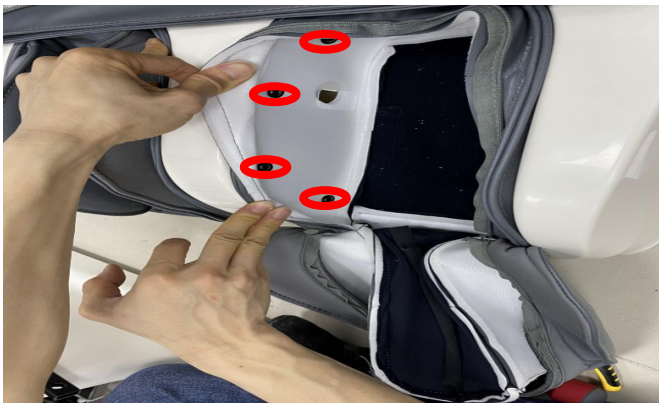
unzip the zipper



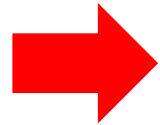
Remove 1 screw to disconnect the air pipe



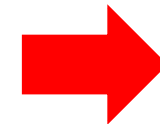
Remove the 4 screws and remove the air bag



Remove 4 screws



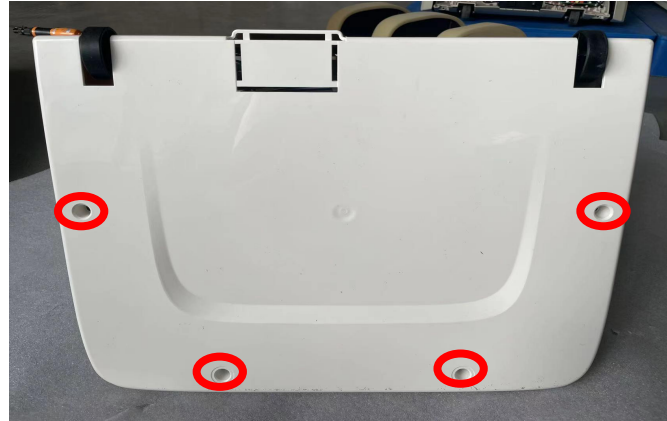
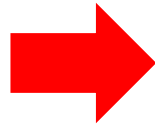
Remove 4 screws



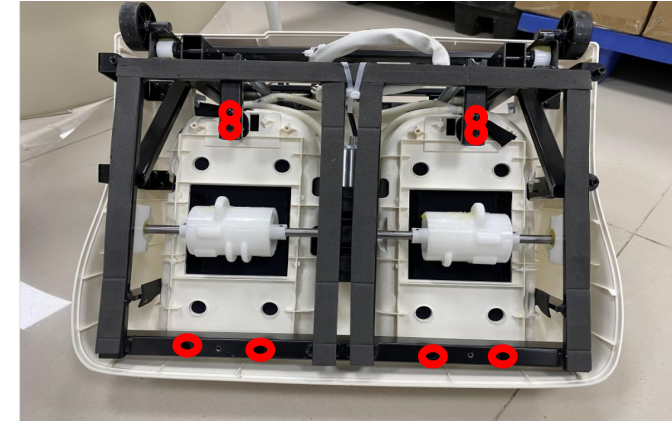
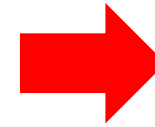
Remove the 3 screws and remove the holster



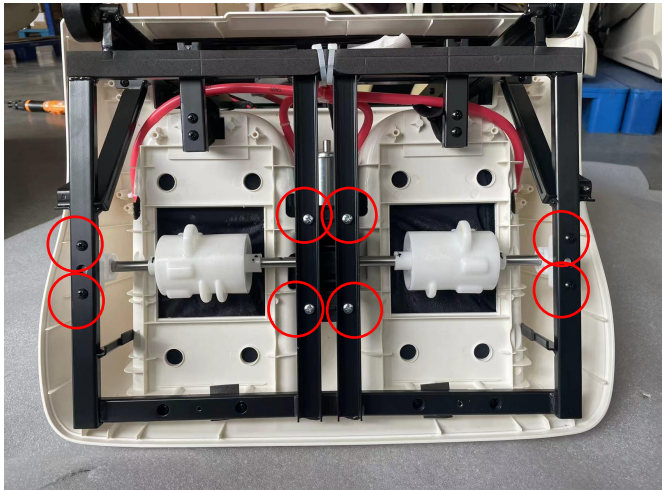
Remove 4 rubber plugs



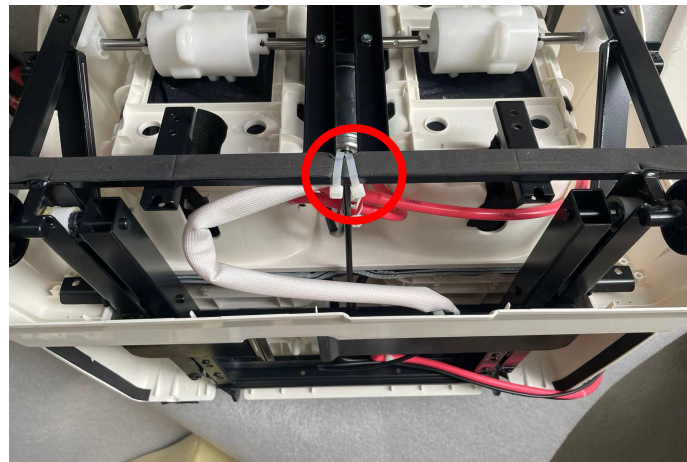
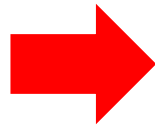
Remove 4 screws



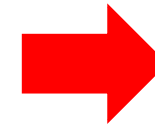
Remove 8 screws



Remove 8 screws



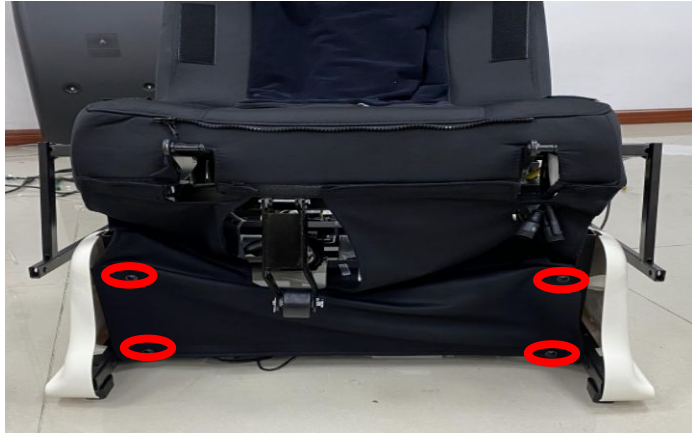
Disconnect the terminals
and cut the cable ties



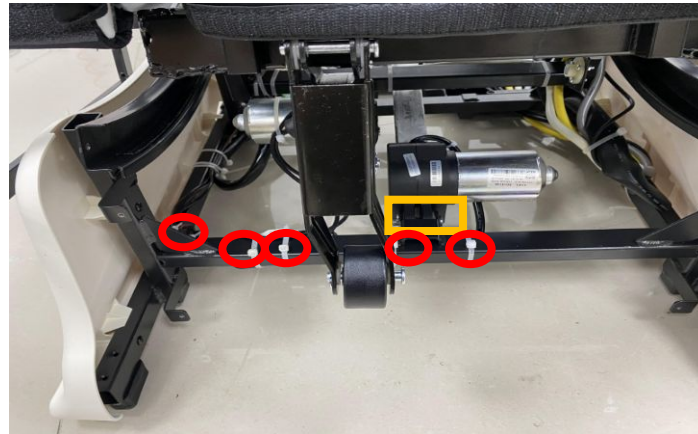
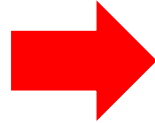
Foot massage motor



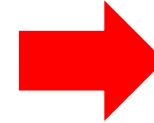
4.8 Backrest push rod removal



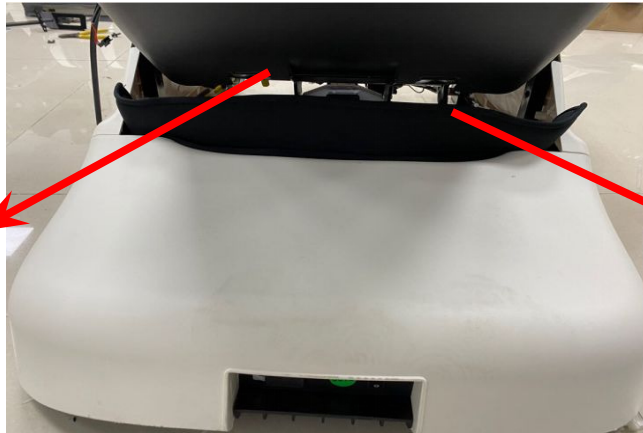
Remove the 4 screws and remove the front screen



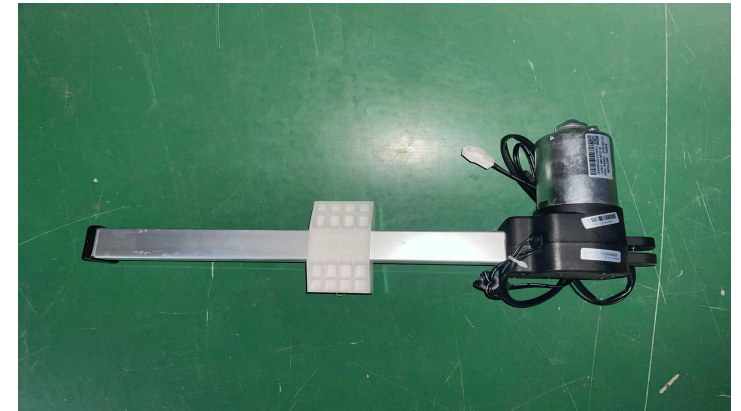
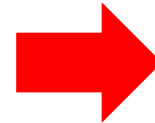
Unplug latch and pin shaft, cut the cable ties



Disconnect the two terminals



Remove 2 screws



backrest actuator



五、Massage chair fault judgment

| No. | display | phenomenon | problem description | steps of shooting the trouble | remark |
|-----|---------|---|--|---|-------------------|
| 01 | | remote control tested any key pressed more than 40 seconds | 1.one of the KEY has been blocked. | 1.check the key of the remote control | turn on the chair |
| 02 | | remote control did not connected more than 4s. | 1.1.remote control wire is broken or the remote control is disconnected 2.Before power on, the upper and down limit sensors are valid at the same time | 1.1.reconnecte the remote control or change the remote control wire. 3.Check the upper and down limit sensors and wiring | turn on the chair |
| 03 | | power on, the upper and down limit sensors are valid at the same time | 1.The connector of the backrest wire is not well connected 2.up or down limit sensor is broken 3.rolling motor or wire is broken | 1.check whether the backrest wire is well connected 2.change the up & down limit sensor | turn on the chair |
| 04 | | rolling counting sensor is abnormal | 1.backrest wire is not well connected. 2.the counting sensor of the rolling motor is broken | 1.check whether the backrest wire is well connected 2.change the counting sensor of the rolling | turn on the chair |


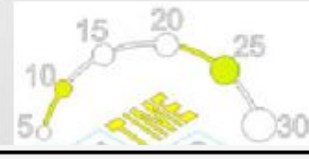



EASEPAL. 厦门蒙发利电子有限公司客户服务部

| | | | | | |
|----|--|--|---|--|----------------|
| 09 | | more than 5 seconds did not tested the middle signal | <ol style="list-style-type: none"> width inspection board is broken the wire connect to the width inspection board is disconnected kneading motor is broken or kneading belt is lost | <ol style="list-style-type: none"> change width inspection board change backrest wires. (black and gray) change kneading motor | turn the power |
| 10 | | more than 5 seconds did not tested the narrow signal | <ol style="list-style-type: none"> width inspection board is broken the wire connect to the width inspection board is disconnected kneading motor is broken or kneading belt is lost | <ol style="list-style-type: none"> change width inspection board change backrest wire change kneading motor | turn the power |
| 13 | | tested signals from up & down limit sensor at the same time. | <ol style="list-style-type: none"> up & down limit sensor are broken backrest wire is disconnected. | <ol style="list-style-type: none"> Change up & down limit sensor check whether the backrest wire is well connected | turn the power |
| 14 | | more than 40s didn't tested the signal from the up limit sensor | <ol style="list-style-type: none"> upper limit sensor is broken. backrest wires are disconnected rolling motor is broken or rolling motor wire disconnected | <ol style="list-style-type: none"> change upper limit sensor check whether the backrest wire is well connected. change rolling motor or rolling motor wire. | turn the power |
| 15 | | height counting signal error | <ol style="list-style-type: none"> the counting sensor of the rolling motor is broken backrest wire is disconnected | <ol style="list-style-type: none"> change the counting sensor of the rolling motor. check whether the backrest wire is well connected. | turn the power |
| 16 | | after tested signal from up limit sensor then tested signal from down limit sensor in 2 seconds. | <ol style="list-style-type: none"> down limit sensor is broken | <ol style="list-style-type: none"> change down limit sensor check whether the backrest wire(black) is well connected. change rolling motor | turn the power |



EASEPAL 厦门蒙发利电子有限公司客户服务部

| | | | | | |
|----|---|---|---|---|----------------|
| 17 |  | more than 40s didn't tested the signal from the down limit sensor | 1. down limit sensor is broken 2. the backrest wire is disconnected. 3. rolling motor is broken or disconnected | 1. change down limit sensor 2. check whether the backrest wire (black) is well connected. 3. change rolling motor | turn the power |
| 18 |  | after tested signal from down limit sensor then tested signal from up limit sensor in 2 seconds. | 1. upper limit sensor is broken. | 1. change upper limit sensor | turn the power |
| 25 |  | when start the zero-G actuator, there is no counting signal for more than 2.5 seconds (or 40 seconds did not test the actuator Reset signal) | 1. zero-G actuator broken 2. zero-G actuator wire broken | 1. change zero-G actuator 2. check the wire of the zero-G actuator | turn the power |

