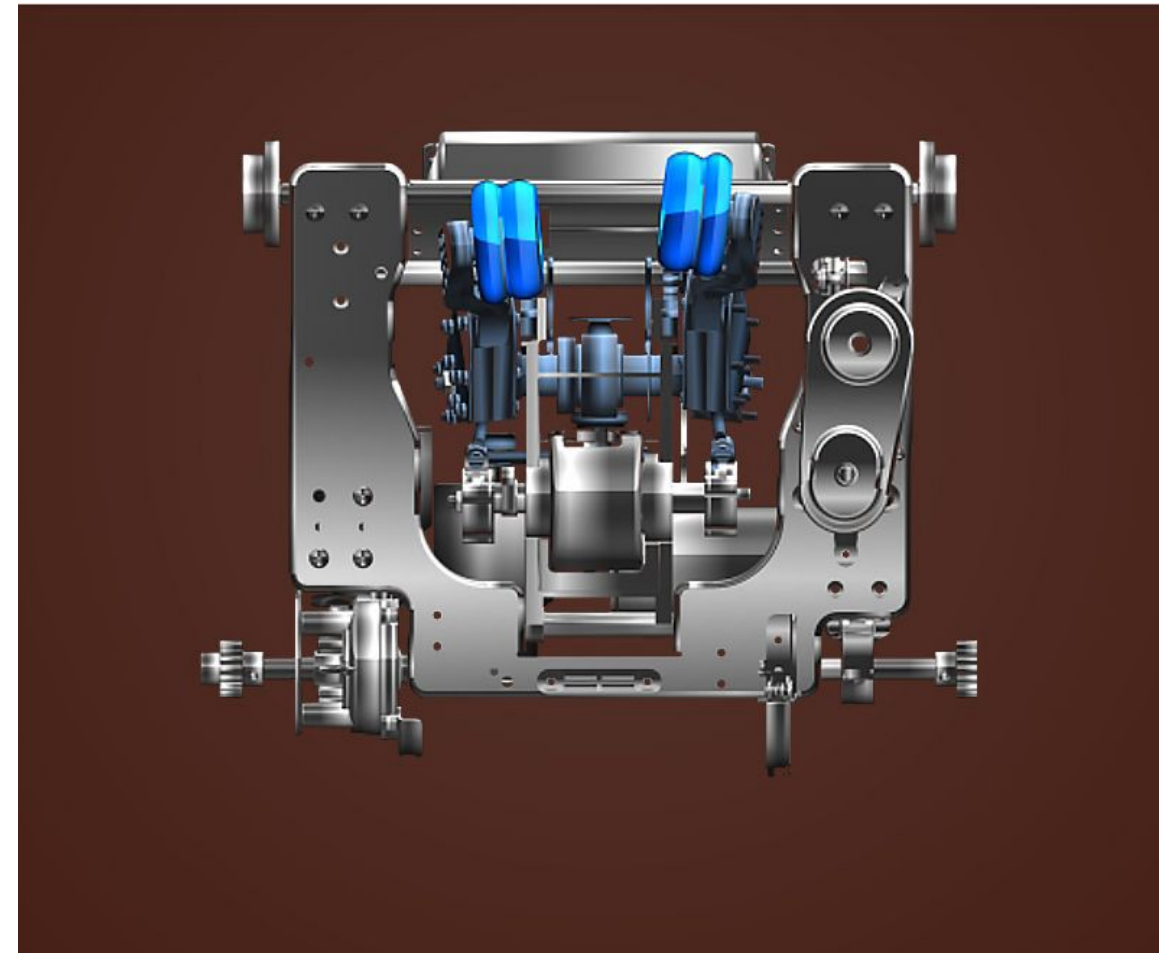
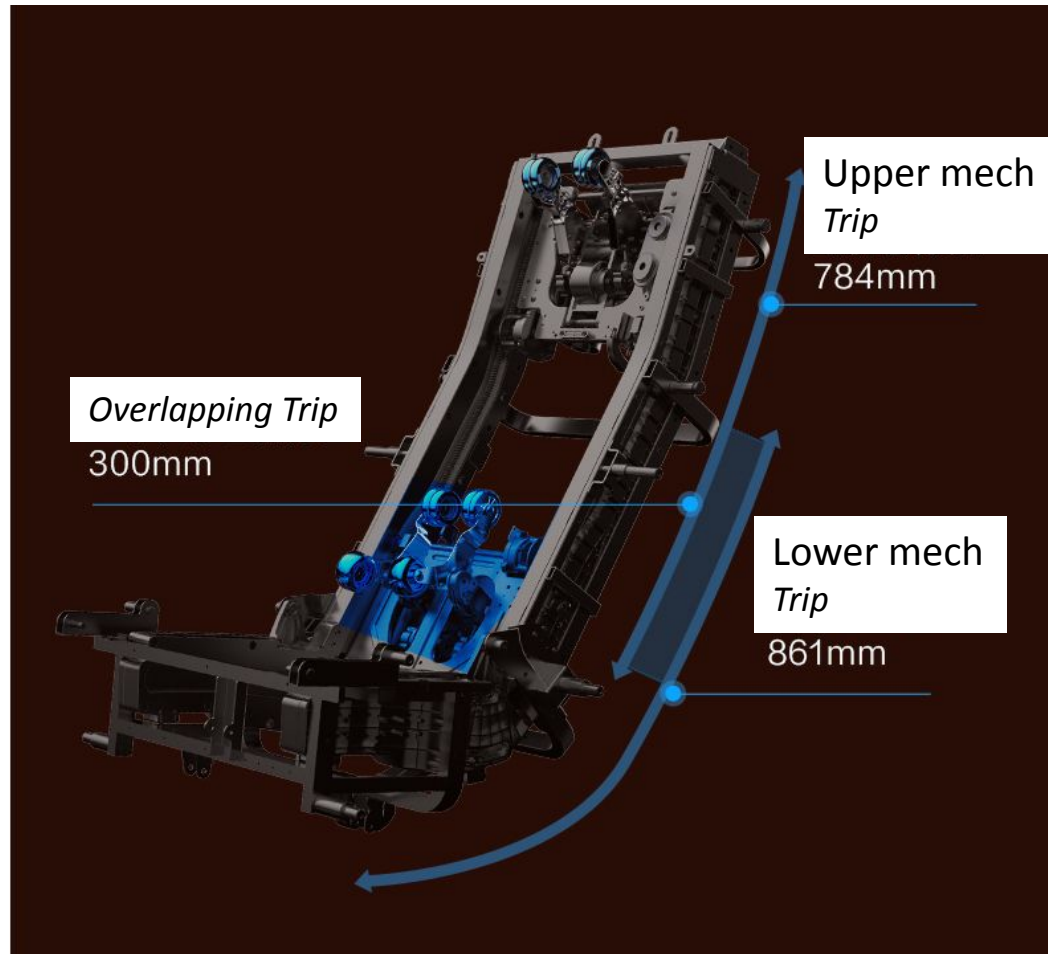


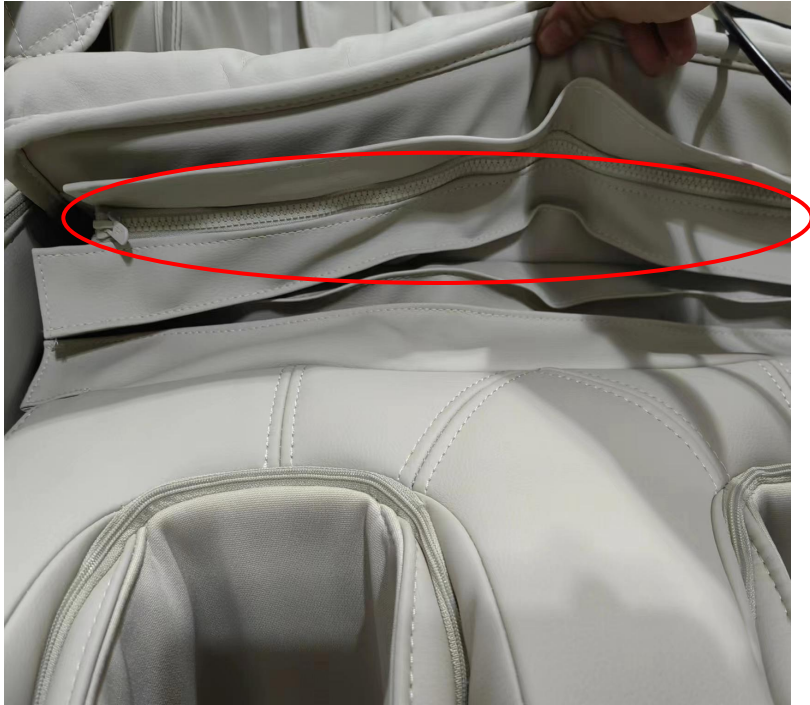
**ROTAI**  
荣泰



**VIVO (RT8901)**  
**massage chair**  
**Service Manual**



# Legrest uninstall



Pic.1

Unzip the legrest cover from back cushion as Pic.1



Pic.2

Take off clips on both sides as Pic.2



Pic.3

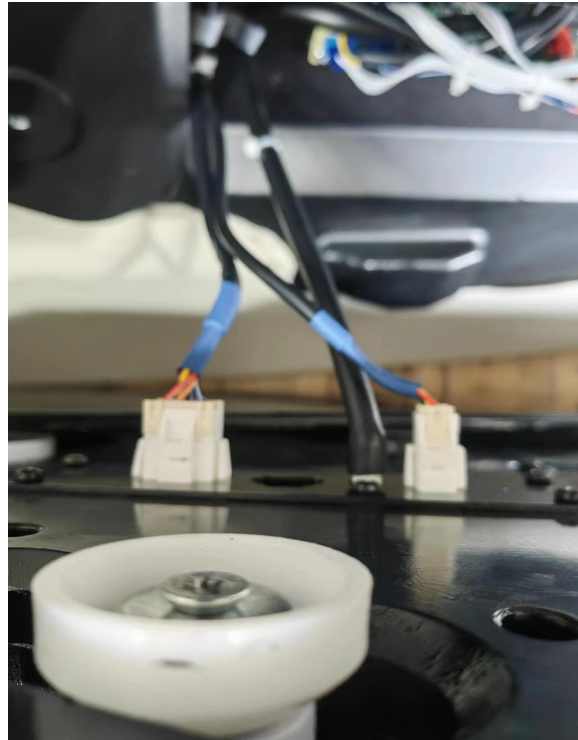
Take off legrest's air tube & wire connection from chair body as Pic.3

# Armrest uninstall



Pic.1

Remove screws at the front end of armrest as **Pic.1**



Pic.2

Take off air tube & wire connection from chair body as **Pic.2**



Pic.3

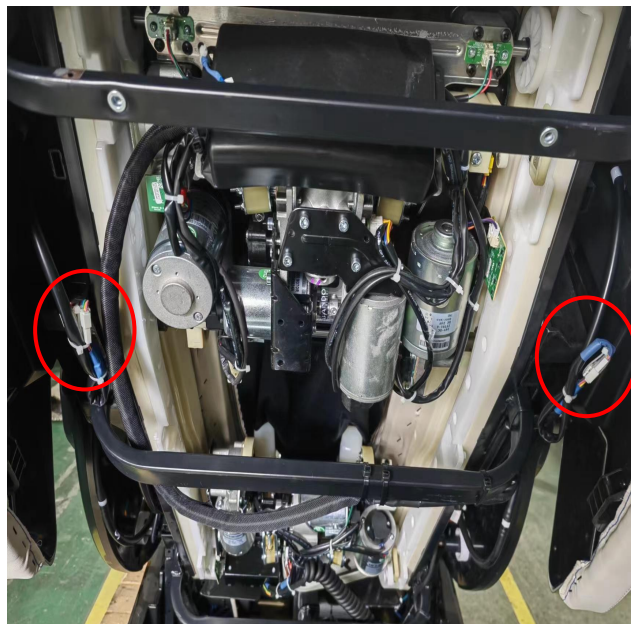
When installing, the iron frame on the armrest should be stuck in the card slot of the chair body as **Pic.3**

# Head cover uninstall



Pic.1

Remove screws on back cover as **Pic.1**



Pic.2

Cut off cable tie and take off wire connection as **Pic.2**



Pic.3

Unzip shoulder airbag cover as **Pic.3**



Pic.4

Remove screws on head cover to take it off as **Pic.4**

# Keyboard PCB uninstall



Pic.1

Lift keyboard plate as Pic.1



Pic.2

Remove the screws as Pic.2



Pic.3

Take off connection as Pic.3



Pic.4

Remove screws as Pic.3

# Charging PCB uninstall



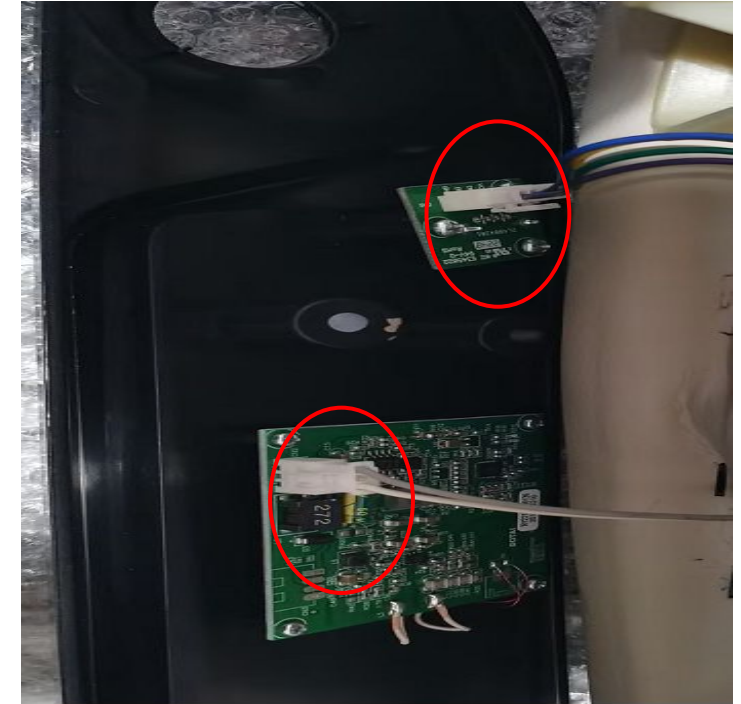
Pic.1

Tear off rubber plate as Pic.1



Pic.2

Remove screws as Pic.2



Pic.3

Take off connection as Pic.3

# Power box cover uninstal



Pic.1

Remove 2 screws as Pic.1



Pic.2

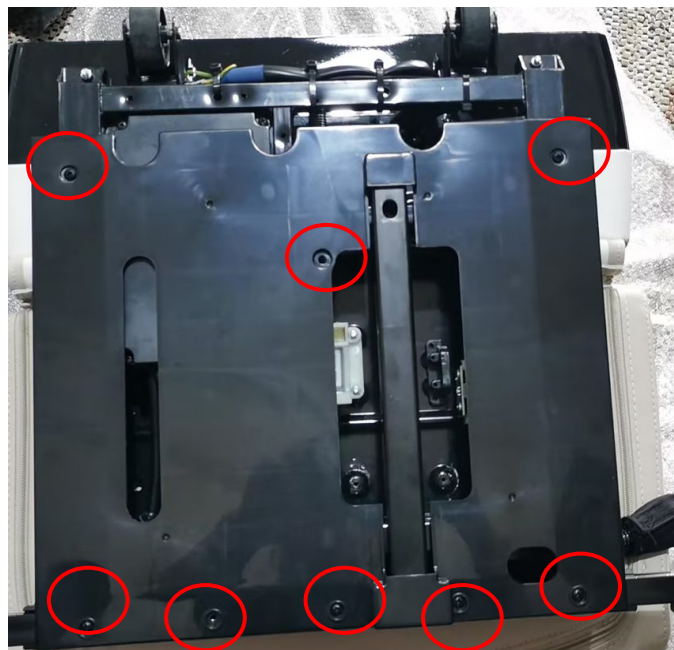
Remove 3 screws as Pic.3

# Legrest PCB uninstall



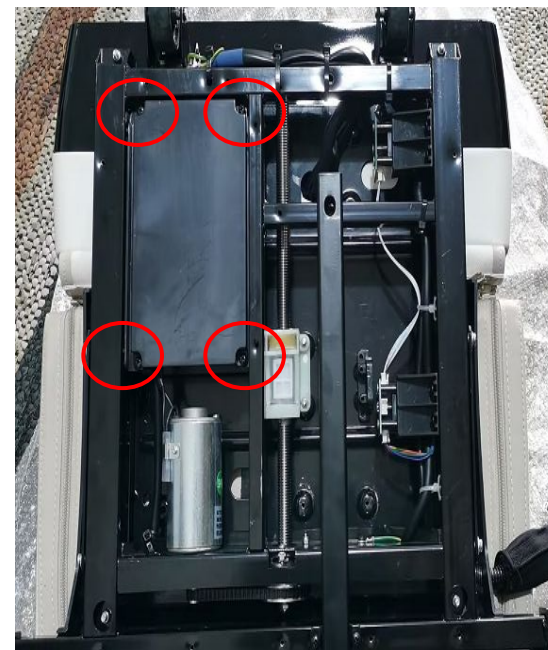
Pic.1

Remove 4 screws  
as **Pic.1**



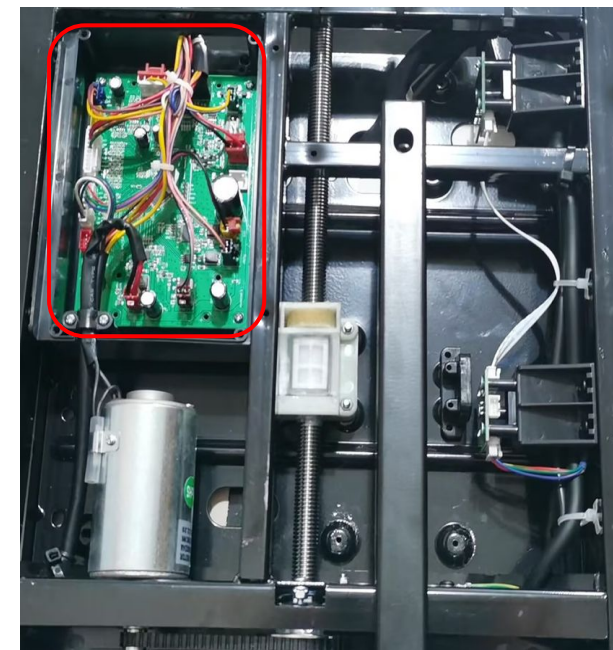
Pic.2

Remove 8 screws  
as **Pic.2**



Pic.3

Remove 4 screws  
as **Pic.3**



Pic.4

Take off  
connection, Remove 4  
screws as **Pic.4**

# Arm motor uninstall



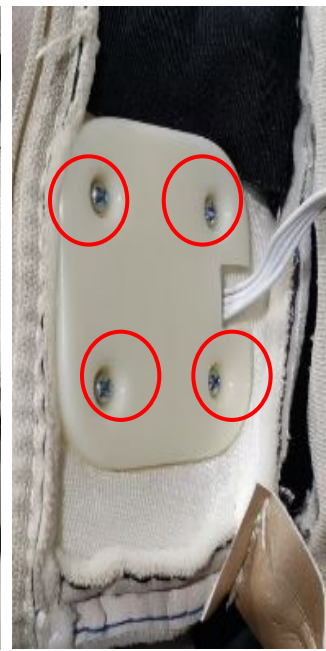
Pic.1

Unzip arm PU cover as Pic.1



Pic.2

Remove 2 screws as Pic.2



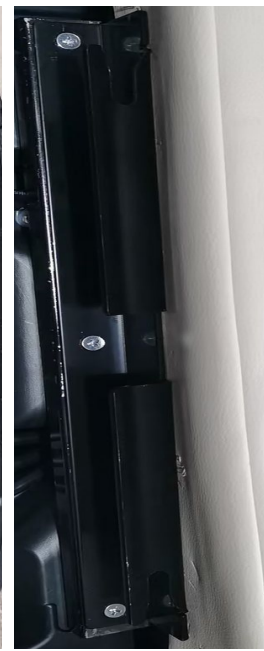
Pic.3

Remove 4 screws as Pic.3



Pic.4

Take off connection as Pic.4



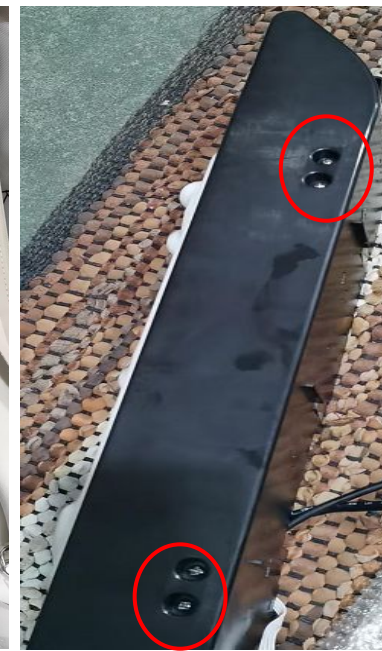
Pic.5

Remove 3 screws as Pic.5



Pic.6

Take off nails from leather as Pic.6



Pic.7

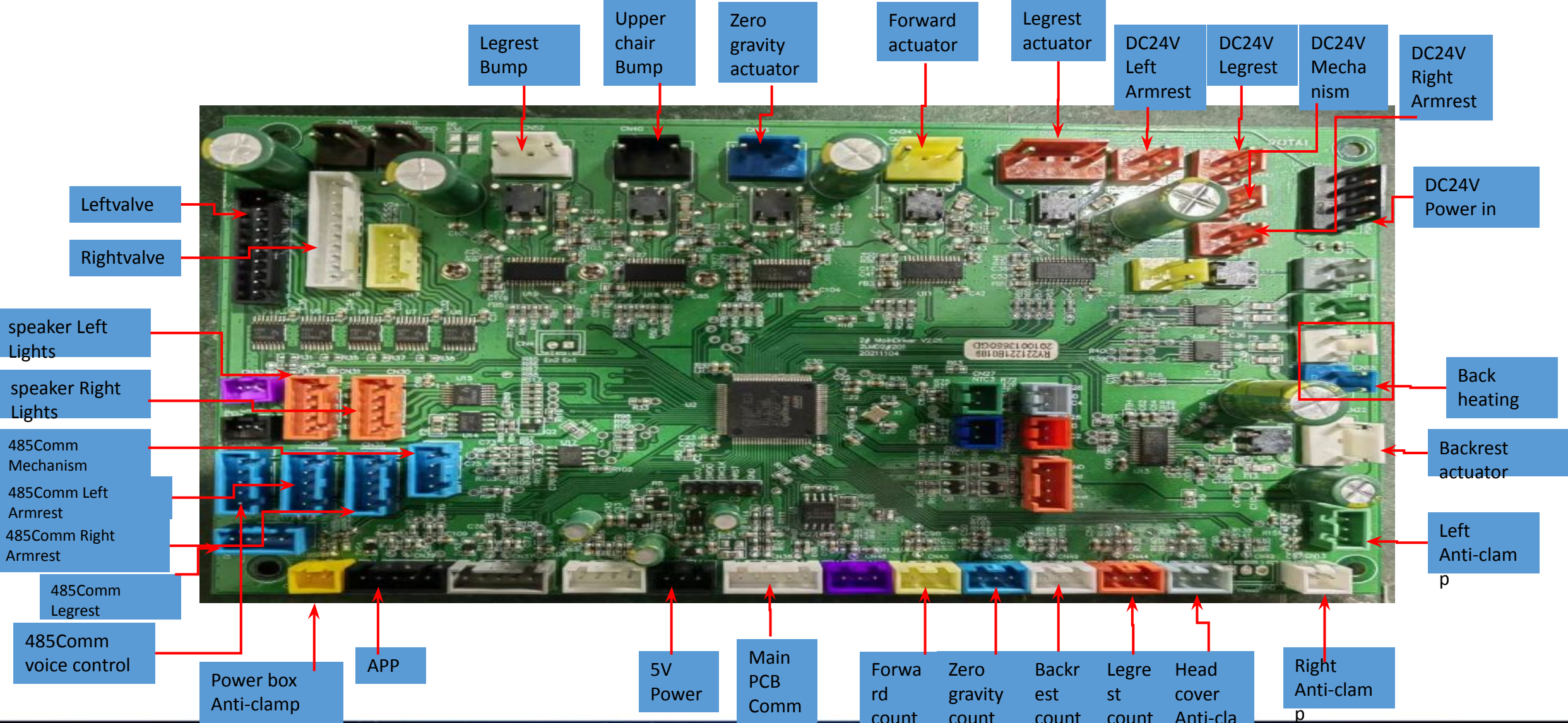
Remove 4 screws as Pic.7



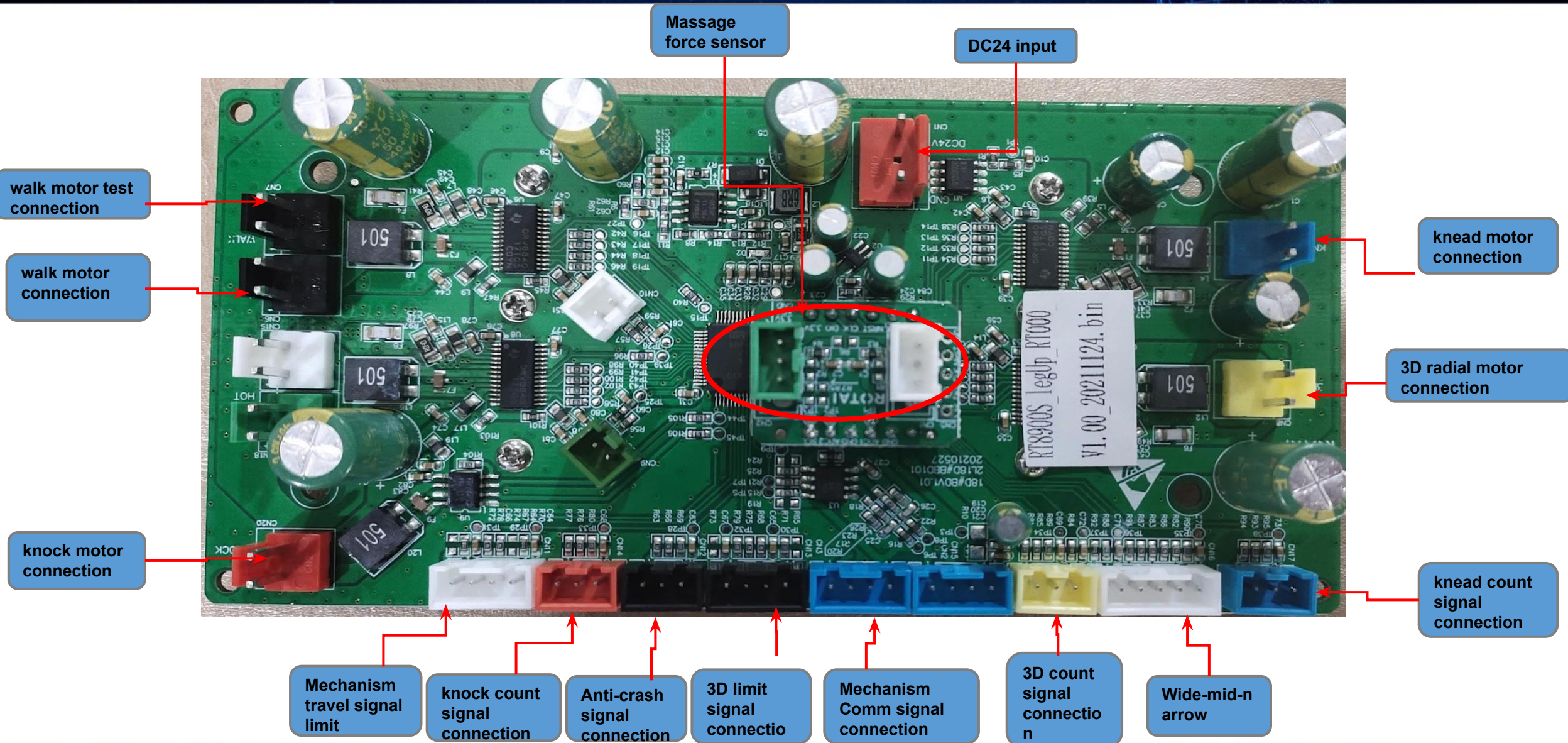
Pic.8

Remove motor as Pic.8

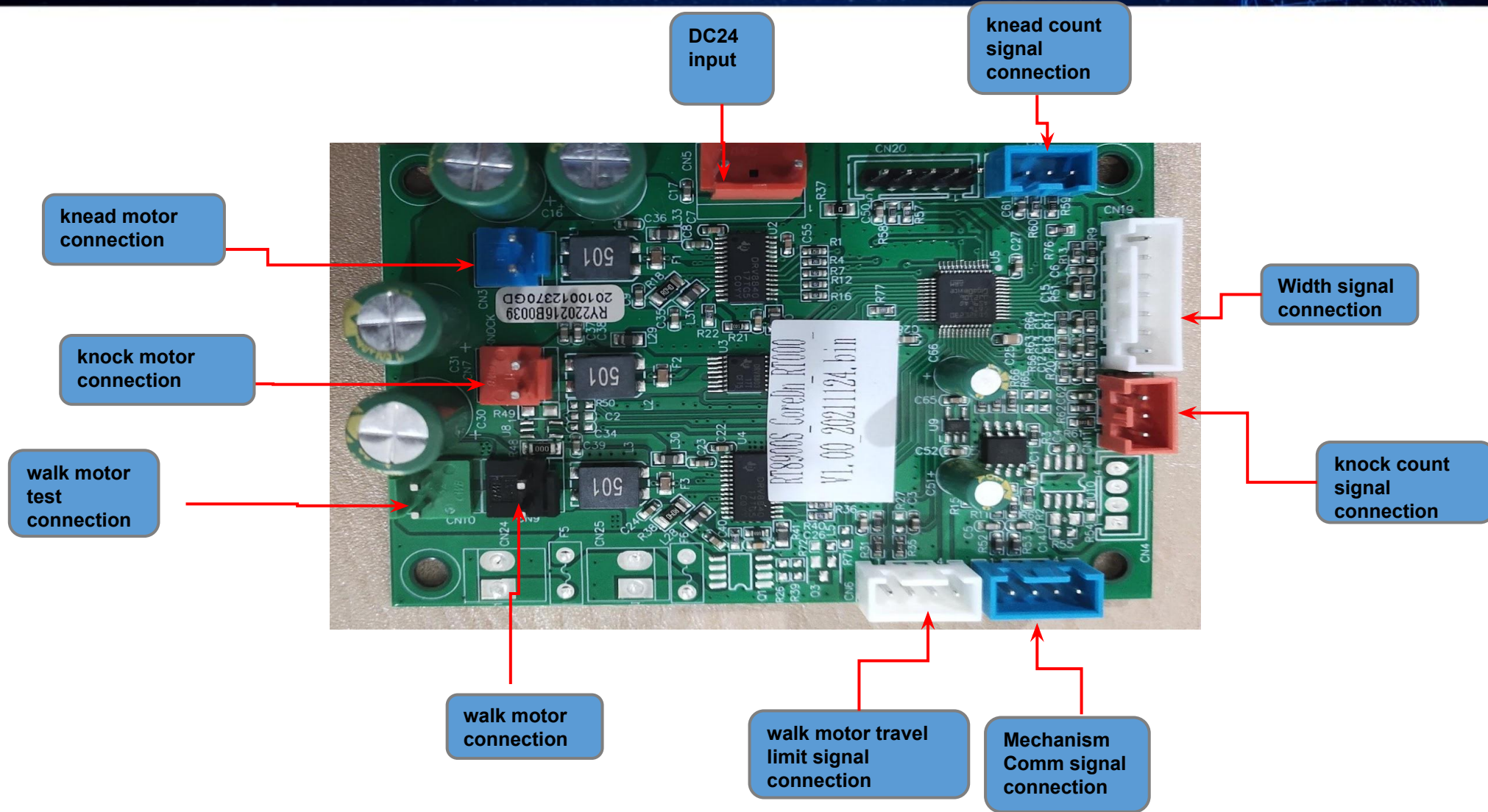
# Main PCB instruction Pic.



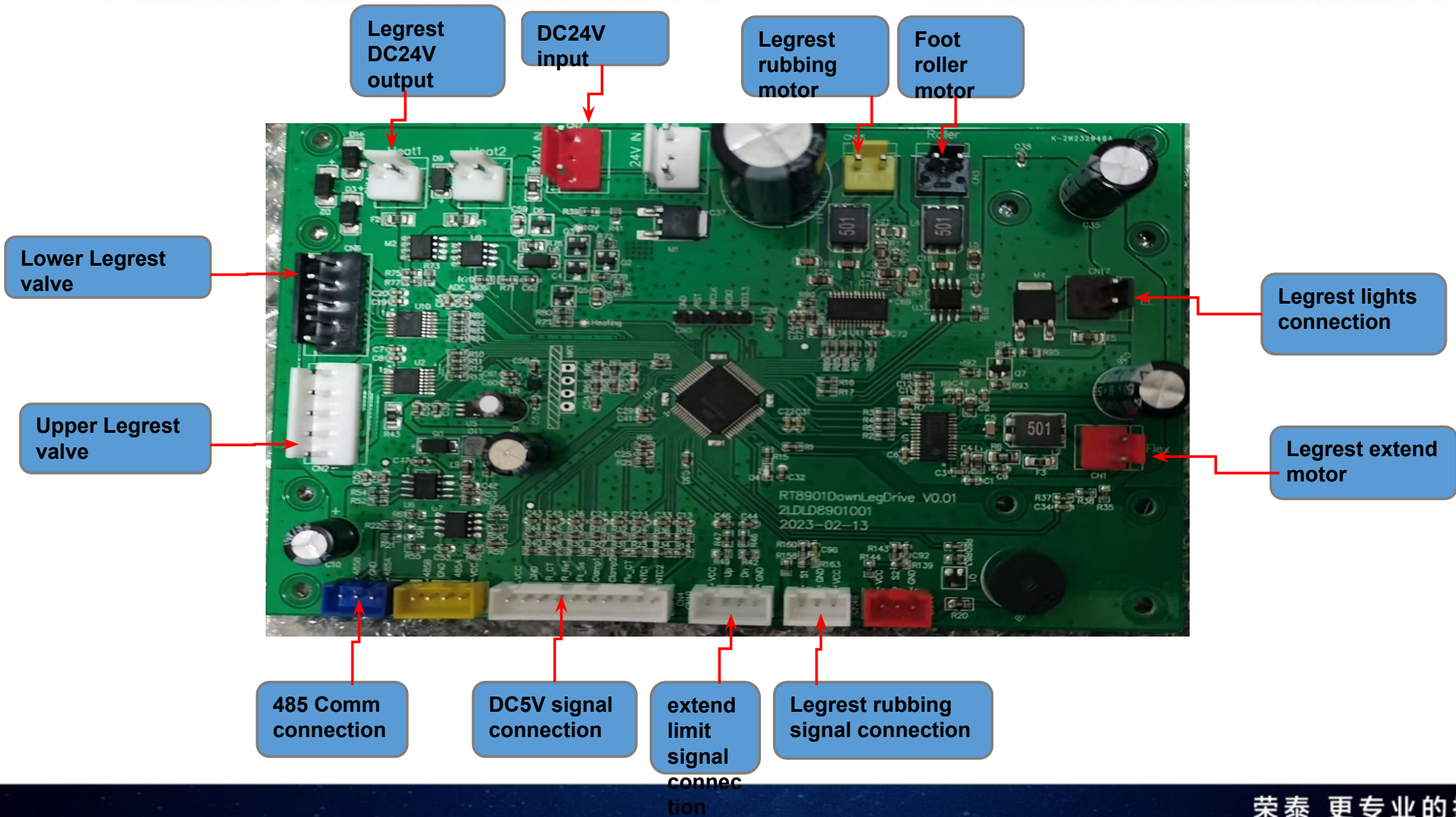
# Upper Mechanism InstructionPic.

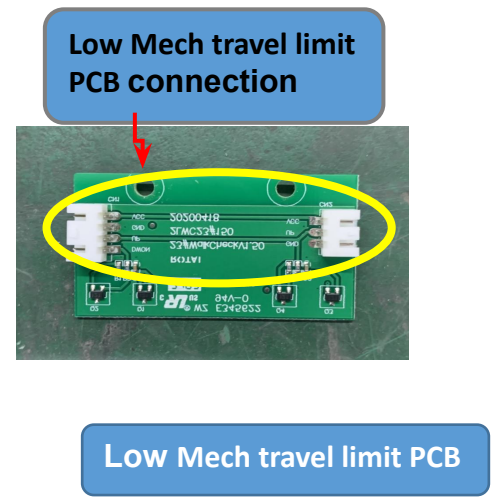
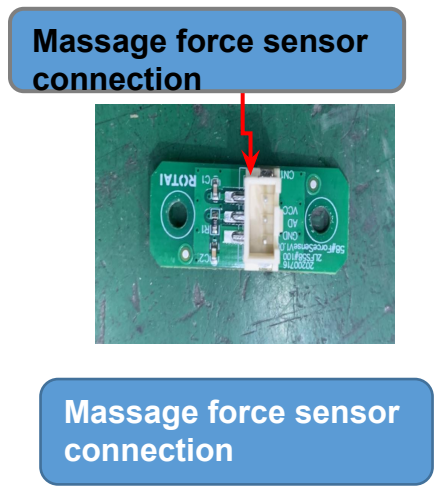
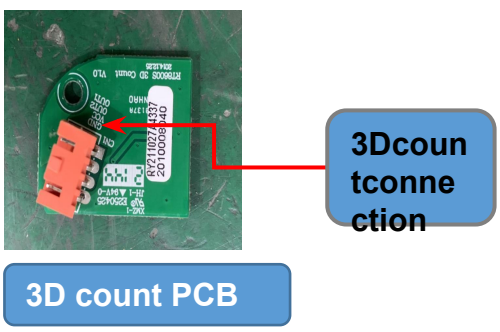
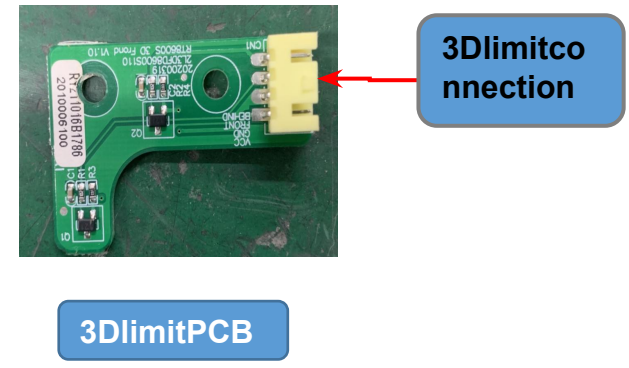
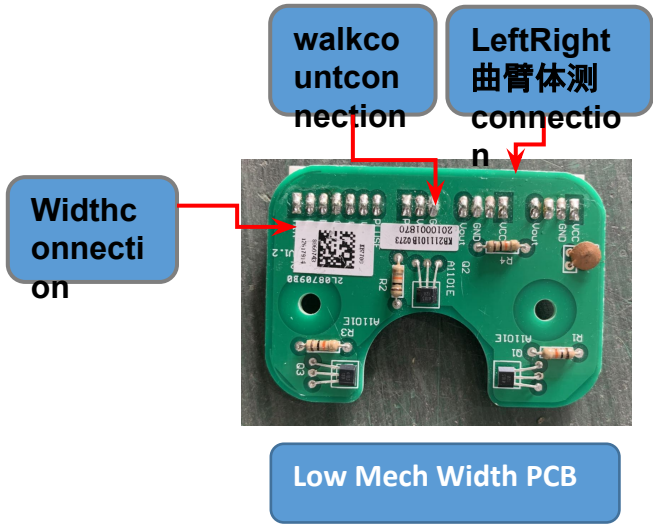
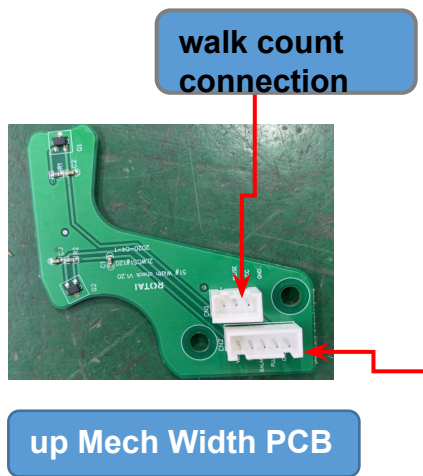


# Lower Mechanism Instruction Pic.

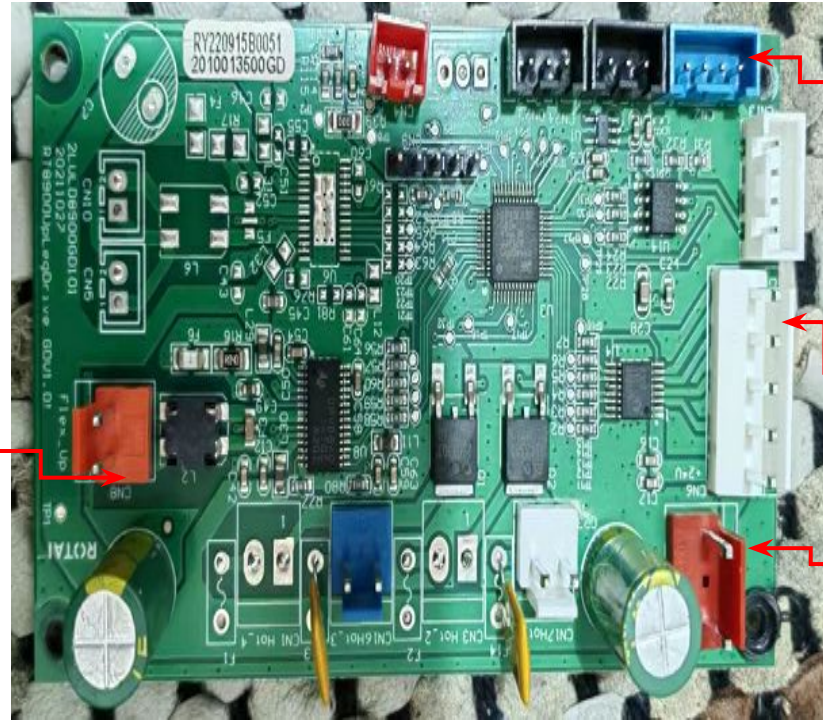


# Legrest main PCB connection Instruction Pic.





# Left & Right Armrest PCB

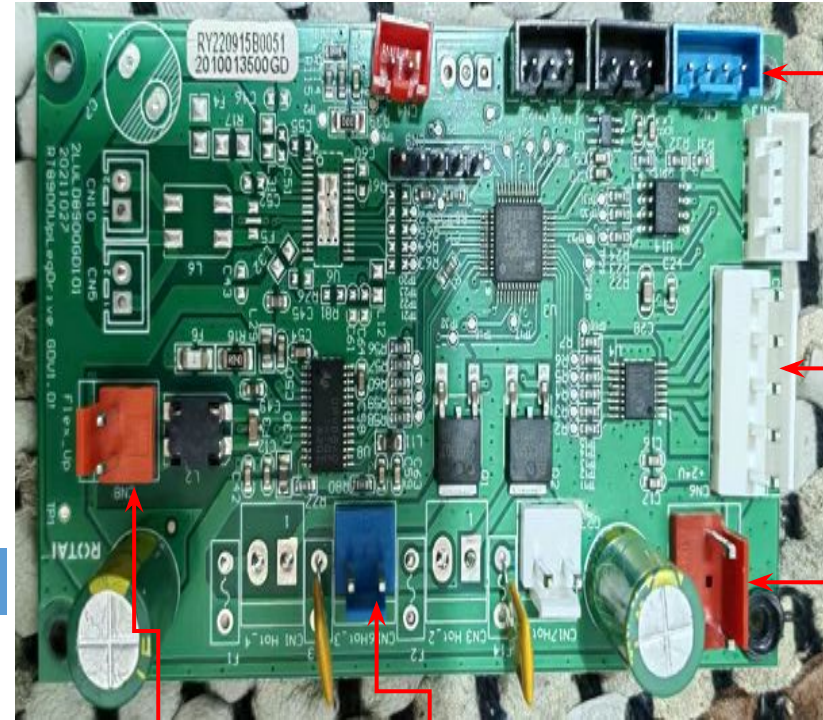


Armrest motor

485 Communication

Armrest valve connection

DC24V input



485 Communication

Armrest valve connection

DC24V input

Armrest motor

DC24V charging

# Health detect PCB, 5V PCB



485 Comm  
input

Health  
detect  
Comm

485 Comm  
Right  
Armrest  
PCB  
output

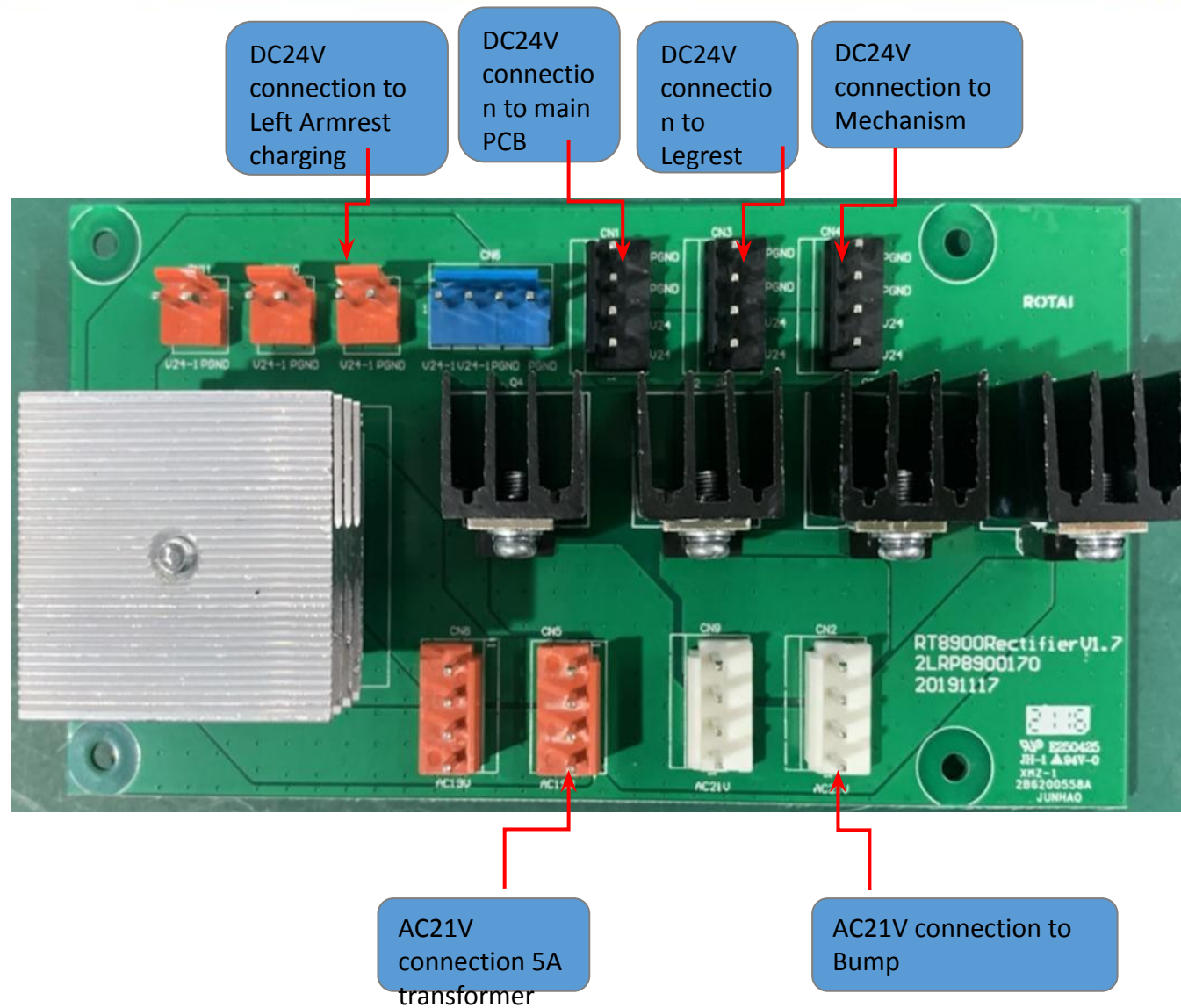
485 Comm  
Armrest  
keyboard  
PCB  
output



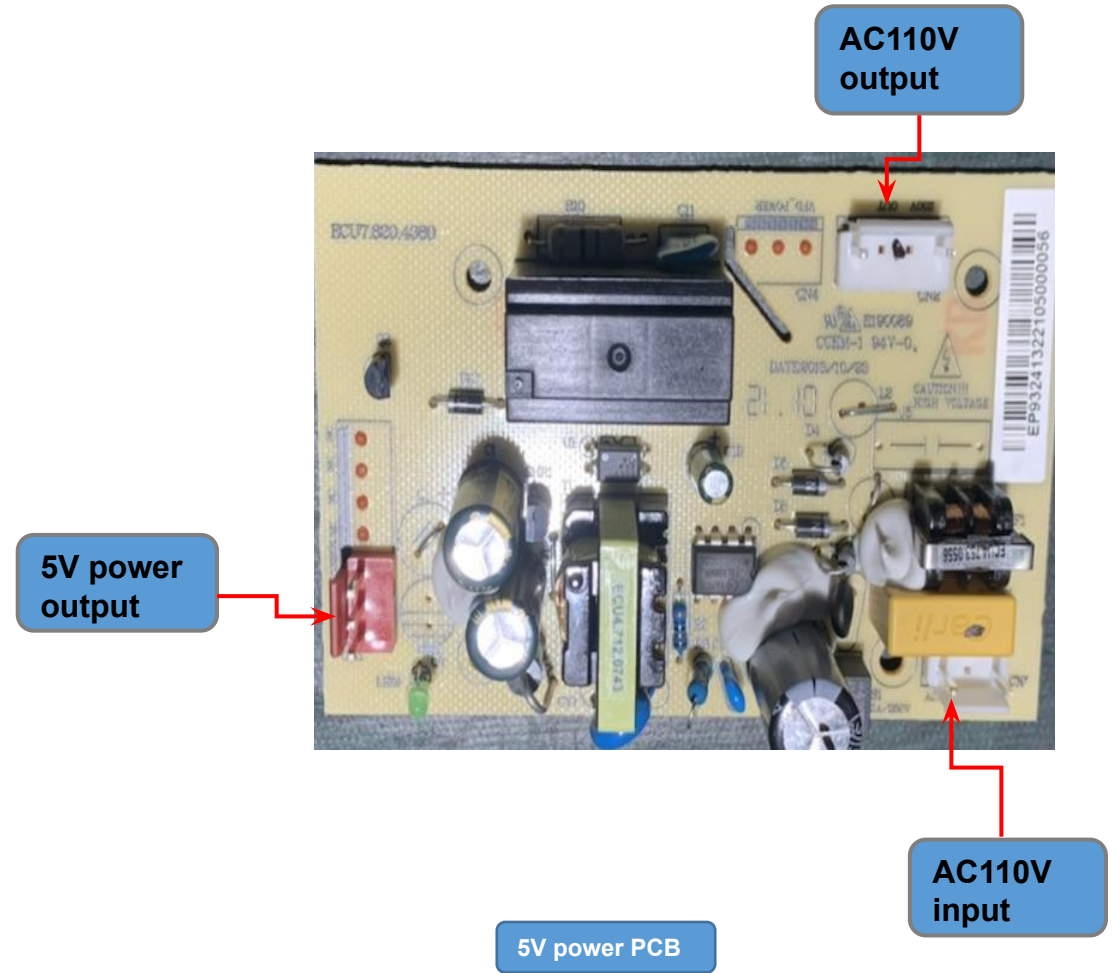
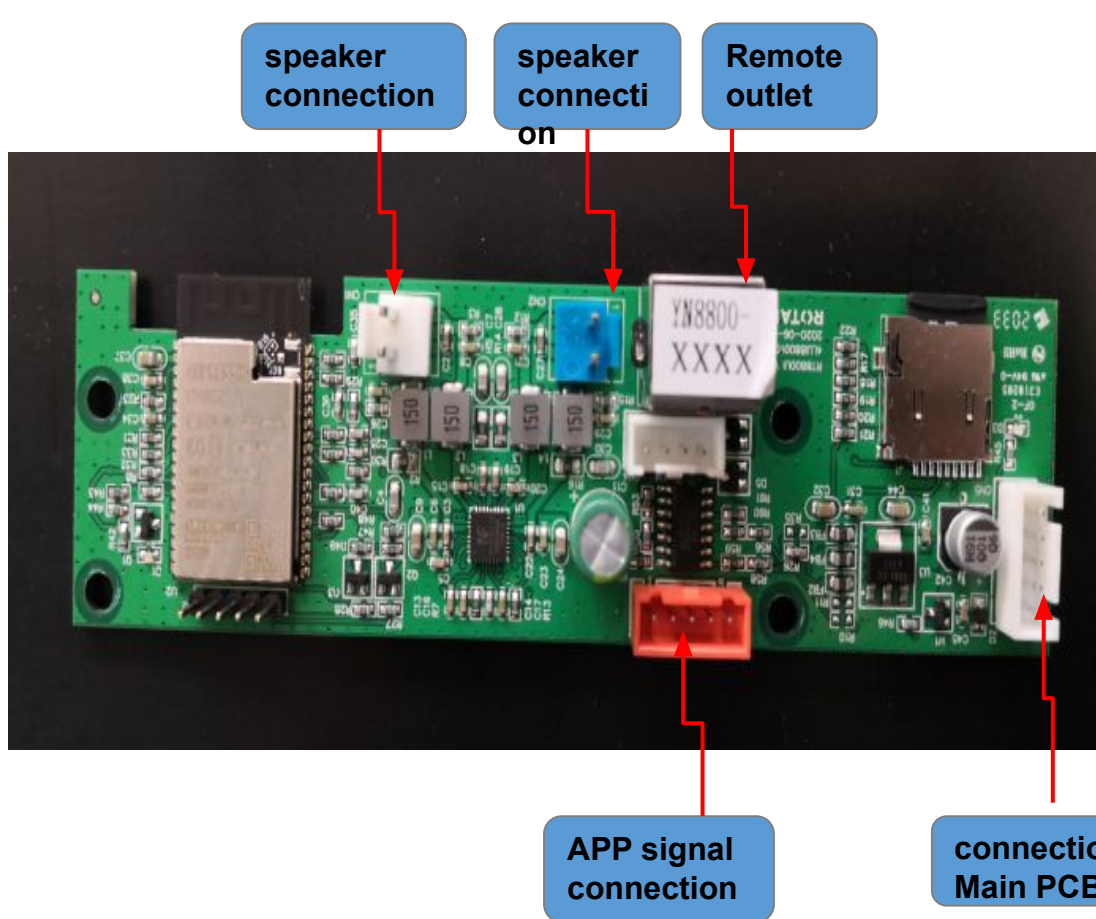
485 Comm  
input

485 Health  
detect  
Comm  
output

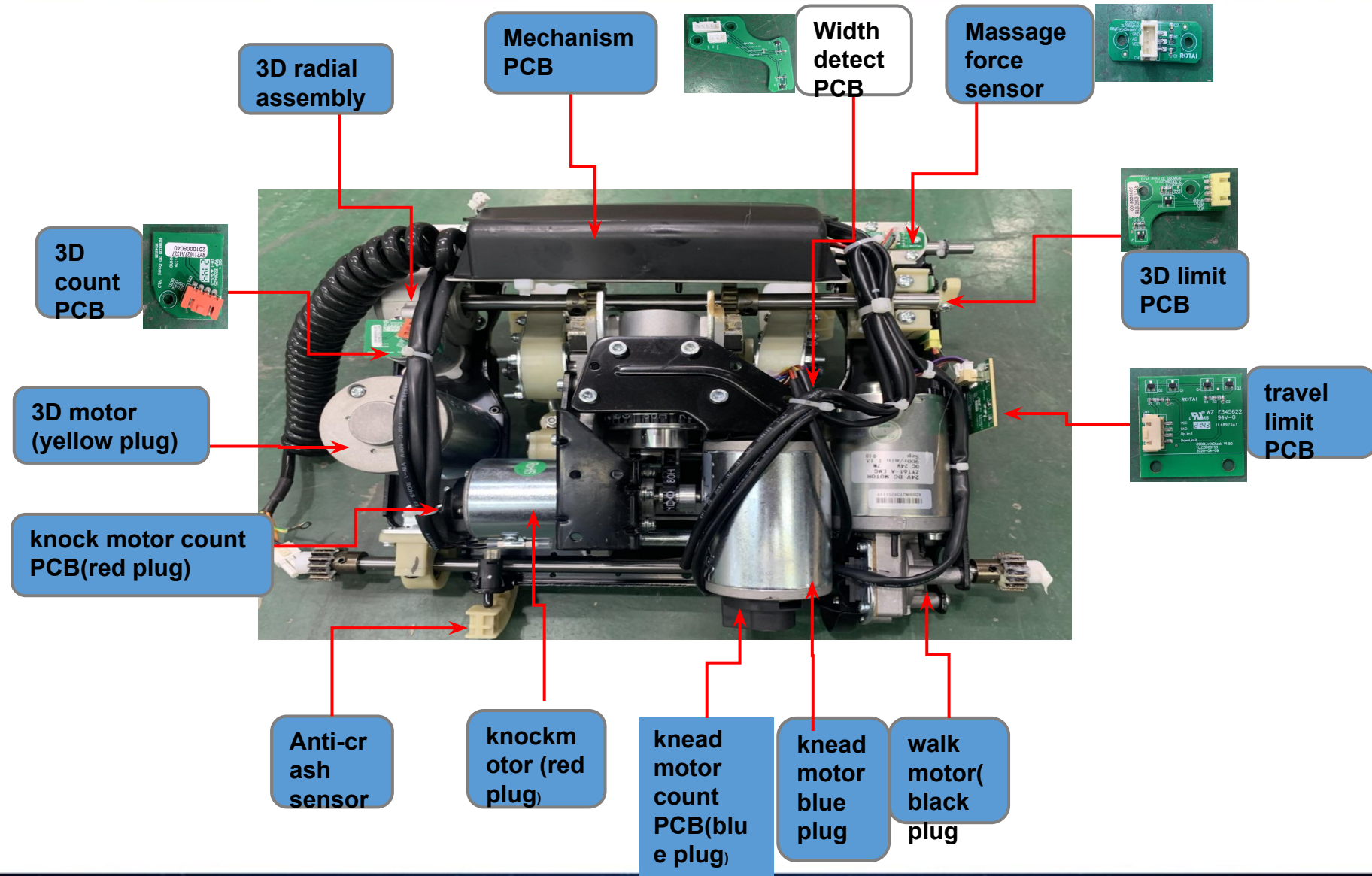
# Rectifier connection Instruction Pic.



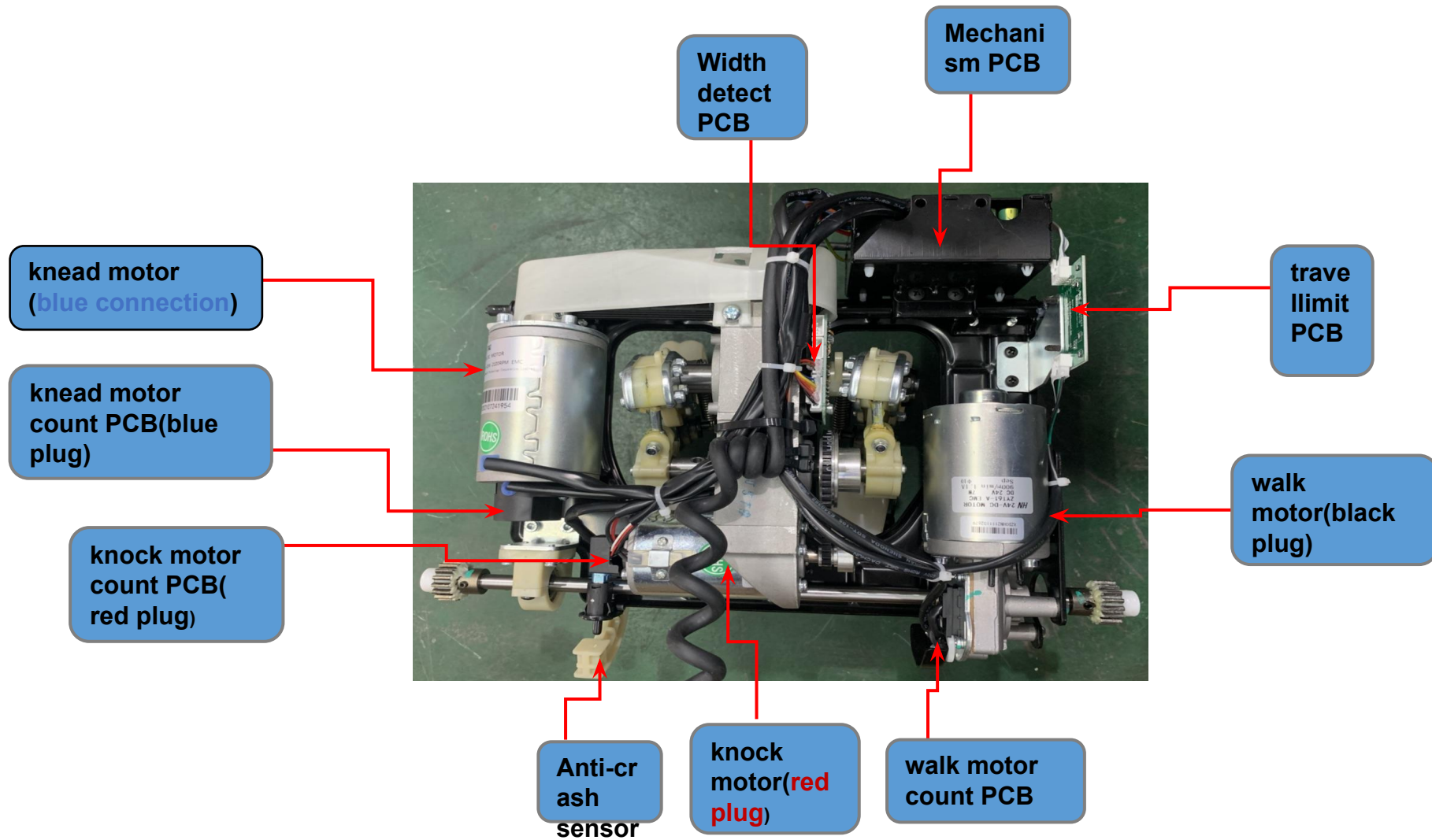
# BT board, 5V Power PCB InstructionPic.



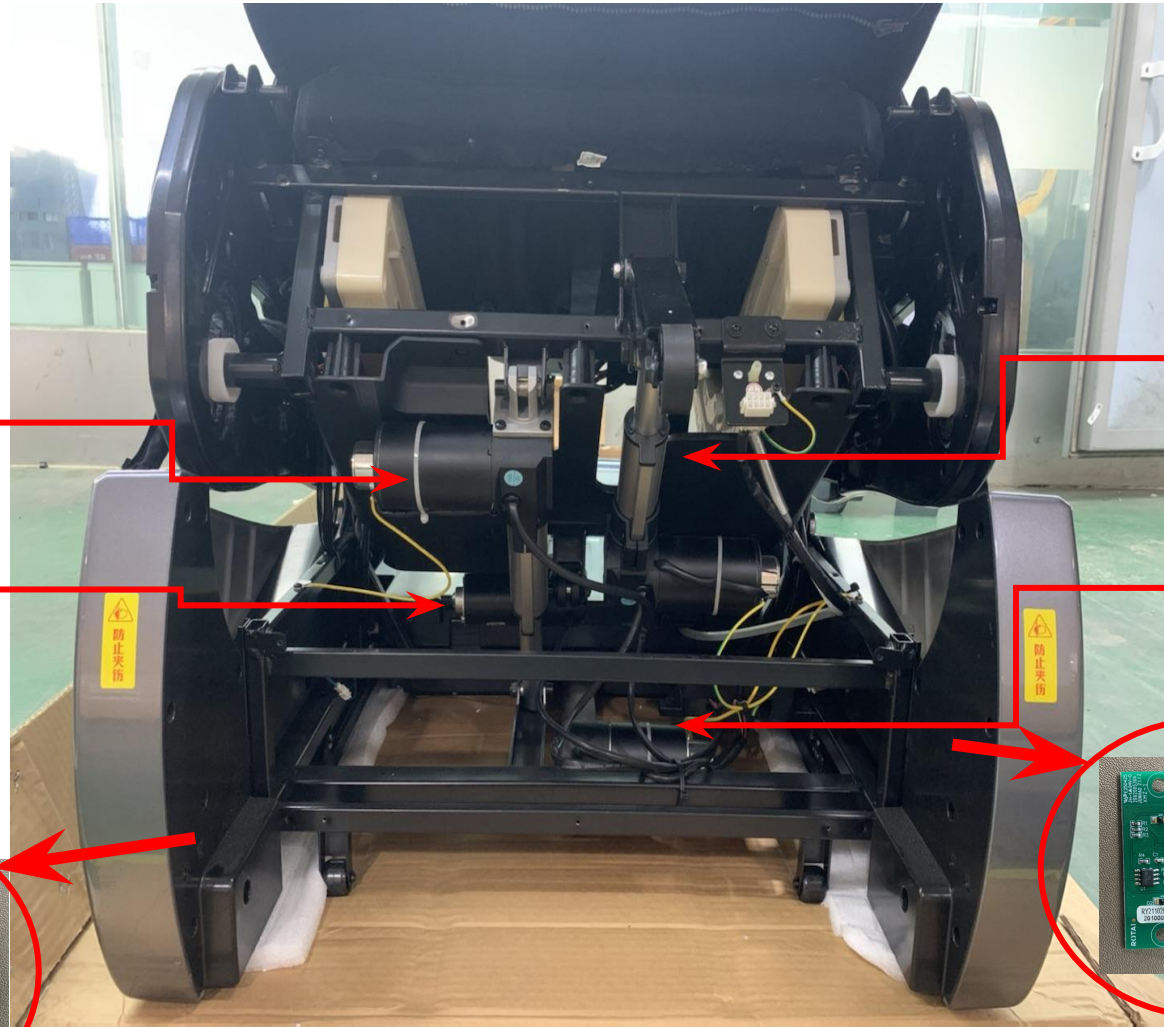
# Upper Mechanism



# Lower Mechanism



# actuators



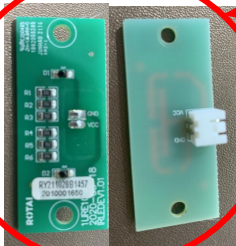
Zero gravity  
actuator(DV24V)  
111MM (blue plug)

Backrest  
actuator(DC24V)  
76MM(white plug)

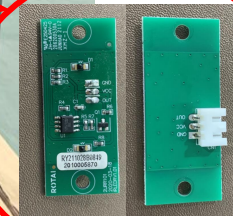
Legrest  
actuator(DC24V)  
92MM (red plug)

Forward  
actuator(DC24V)  
280MM (yellow plug)

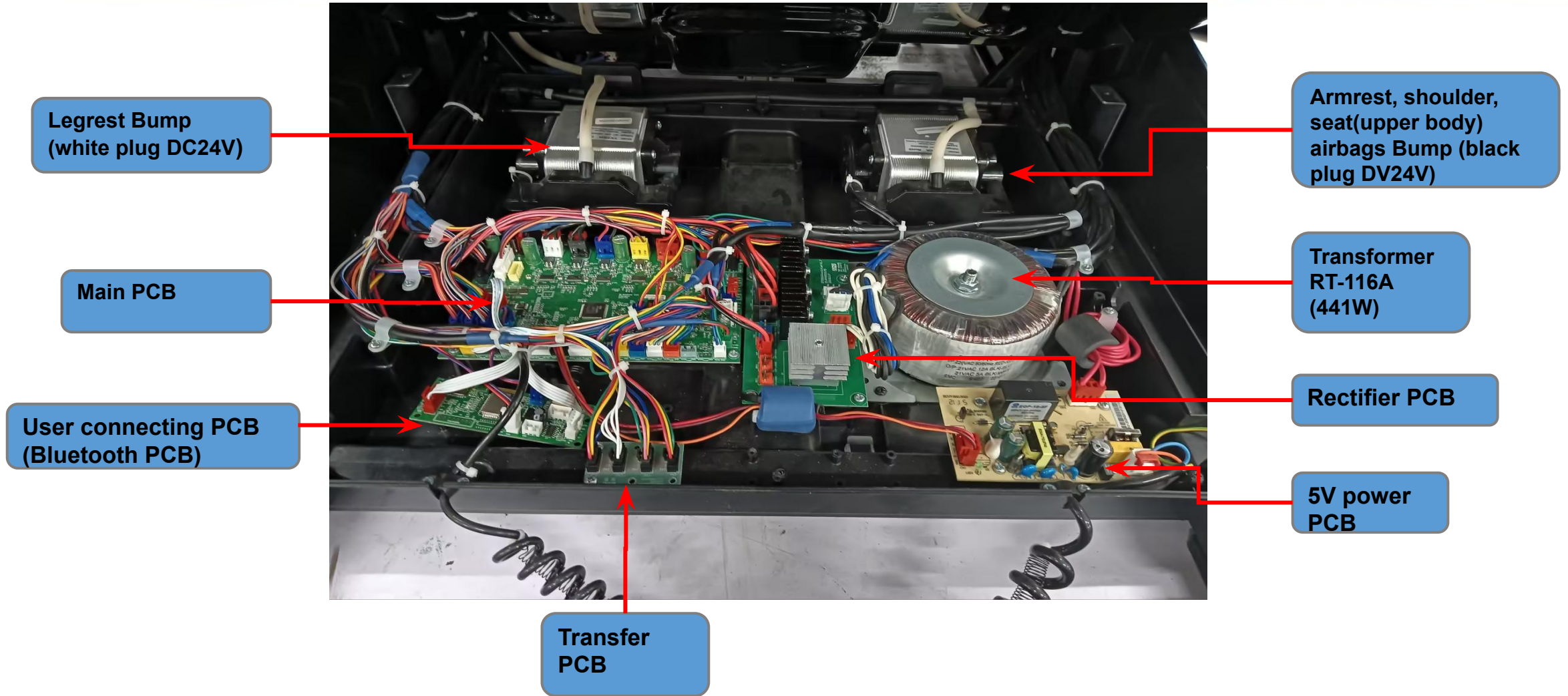
Rightsides  
bottom  
sensor PCB



Leftsides bottom  
sensor PCB



# Power BOX



1. Tablet cannot control chair

2. Fuse burned

3. Knead motor don't work

4. Mechanism no Width change

5. Knock motor don't work

6. Walk motor don't work

7. 3D radial motor don't work

8. Legrest actuator don't work

9. Forward actuator don't work

10. Backrest actuator don't work

11. Zero gravity actuator don't work

12. Legrest rubbing don't work

13. Low Legrest don't extend

14. Legrest roller don't work

15. Aigbag don't work

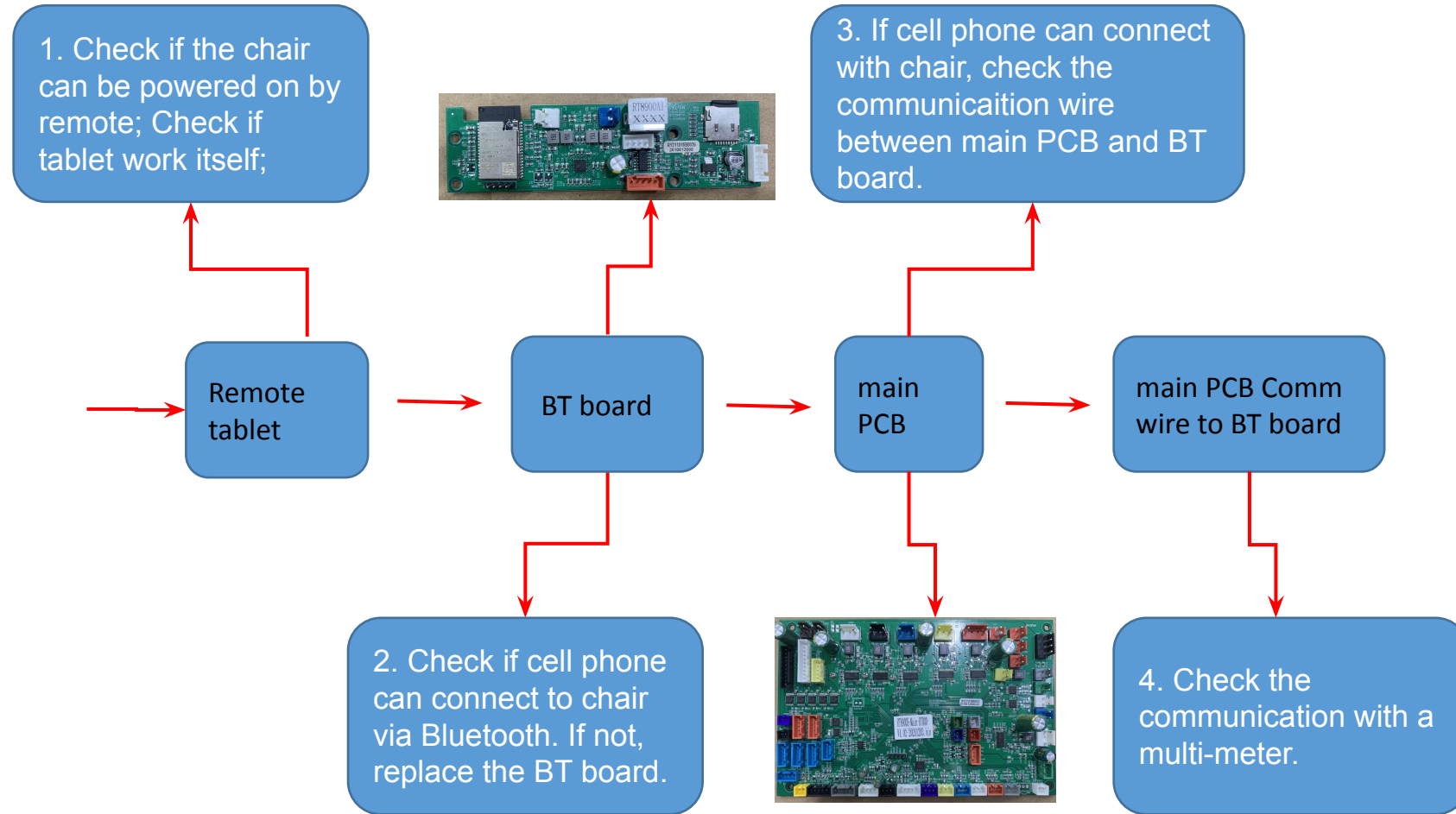
16. keyboard PCB don't work

17. Wireless charging no work

18. Failed on body scan

19. Keep body scanning

# 1. Tablet cannot control chair

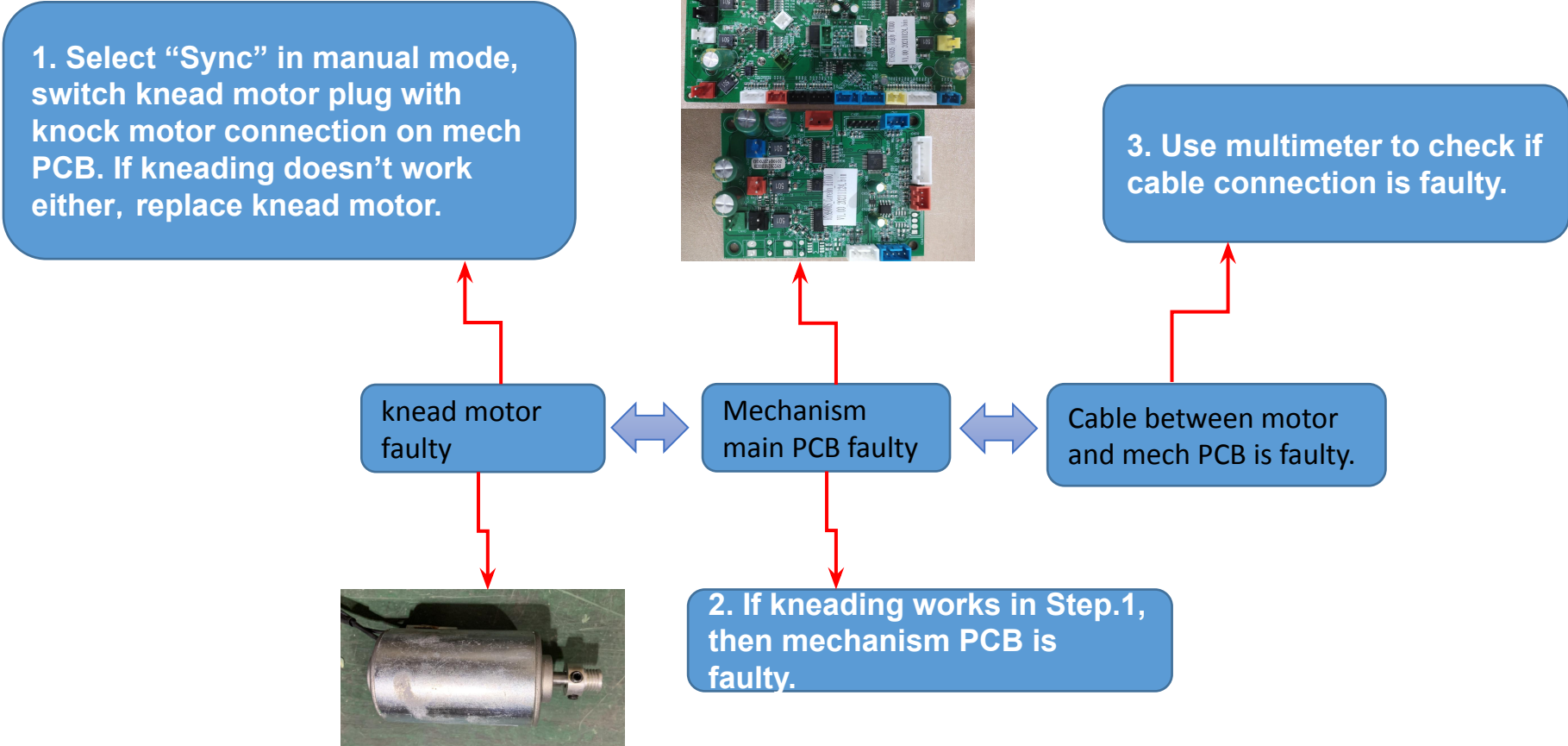


## 2. Fuse burned

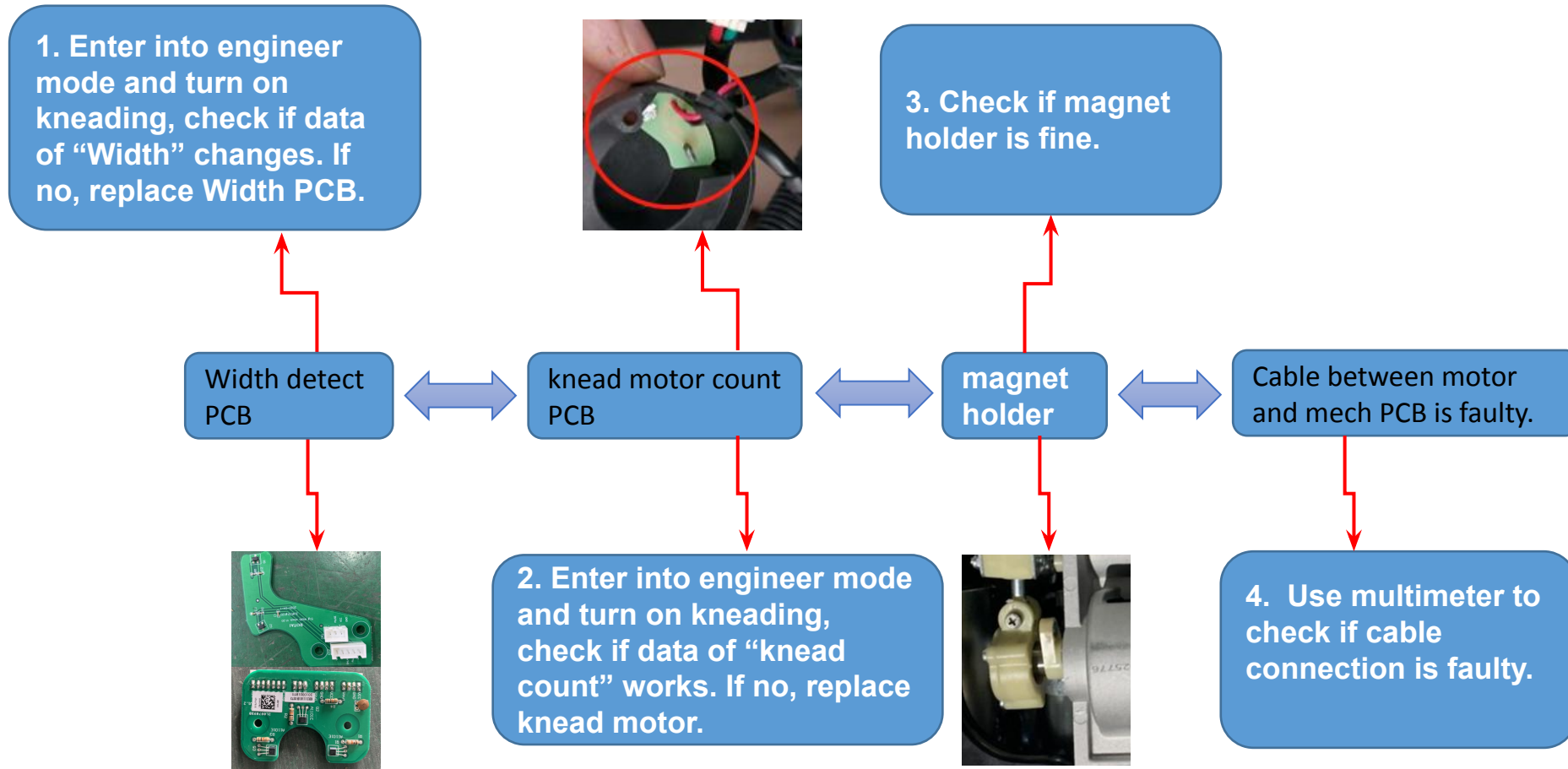
Parts replacing order:



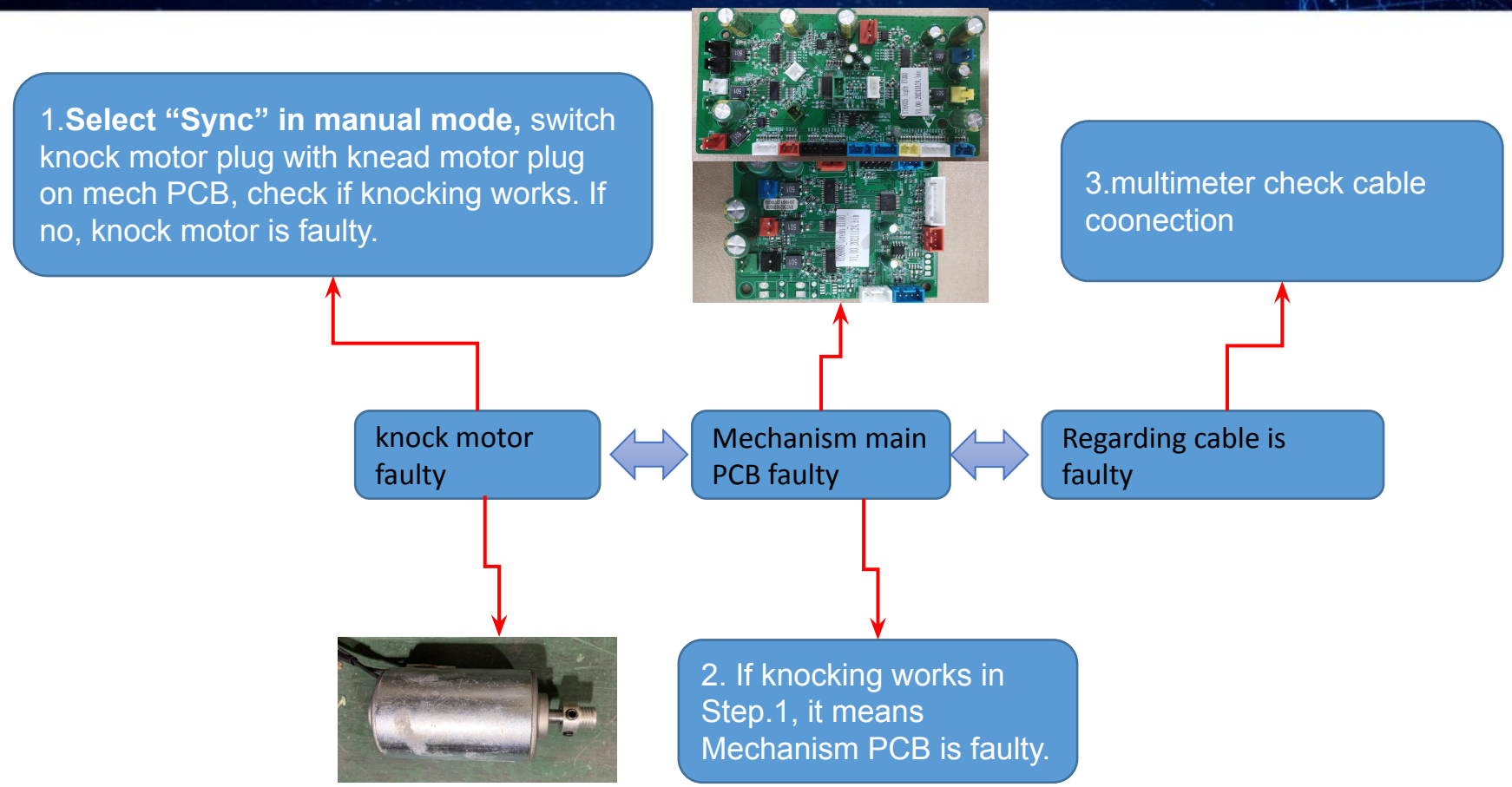
# 3.Kneading motor don't work



# 4.Mechanism cannot detect Width

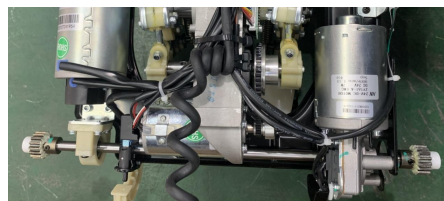


# 5. knocking motor don't work



# 6.walking motor don't work

1. Connect the extra plug on mechasnim with 24V adaptor, which is direct to walk motor. If mechanism walks, motor is fine.



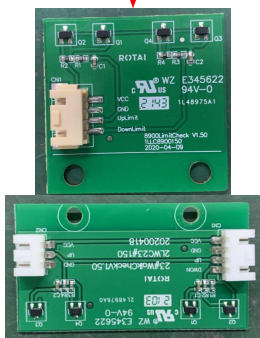
3. Return plugs back to original from Step.2, switch the plugs on mech PCB and run "Kneading" manually. If it walks, it means mech PCB faulty. If not, it's cable faulty. We can use a multi-meter to test the connection of cable.

travel detect PCB faulty

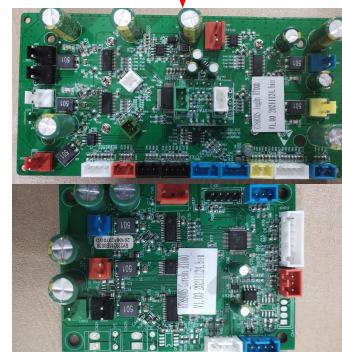
walk motor faulty

Mechanism PCB faulty

Regarding cable is faulty



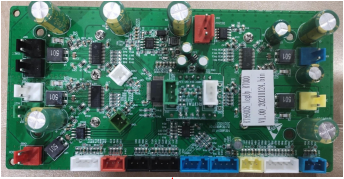
2.Select "Point" in munal and move mech with "Up/Down" on remote, if there are DD sound both moving up and down, then "travel detect PCB" is fine. Switch plugs of walk and knead motor on mechanism and run "Kneading" on remote, if the mech walks, the motor is fine.



4. Turn multimeter to "Sound" mode and test the cable if there is faulty connection.

# 7. 3D radial motor don't work

1. Select "kneading" manually, switch plug of radial motor to knead motor on Mechanism PCB. If motor don't work(mechanism cannot push forward or backward), motor is faulty.



radial motor faulty

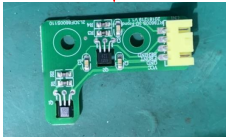
Mechanism PCB faulty

3D travel count PCB faulty

Regarding cable is faulty

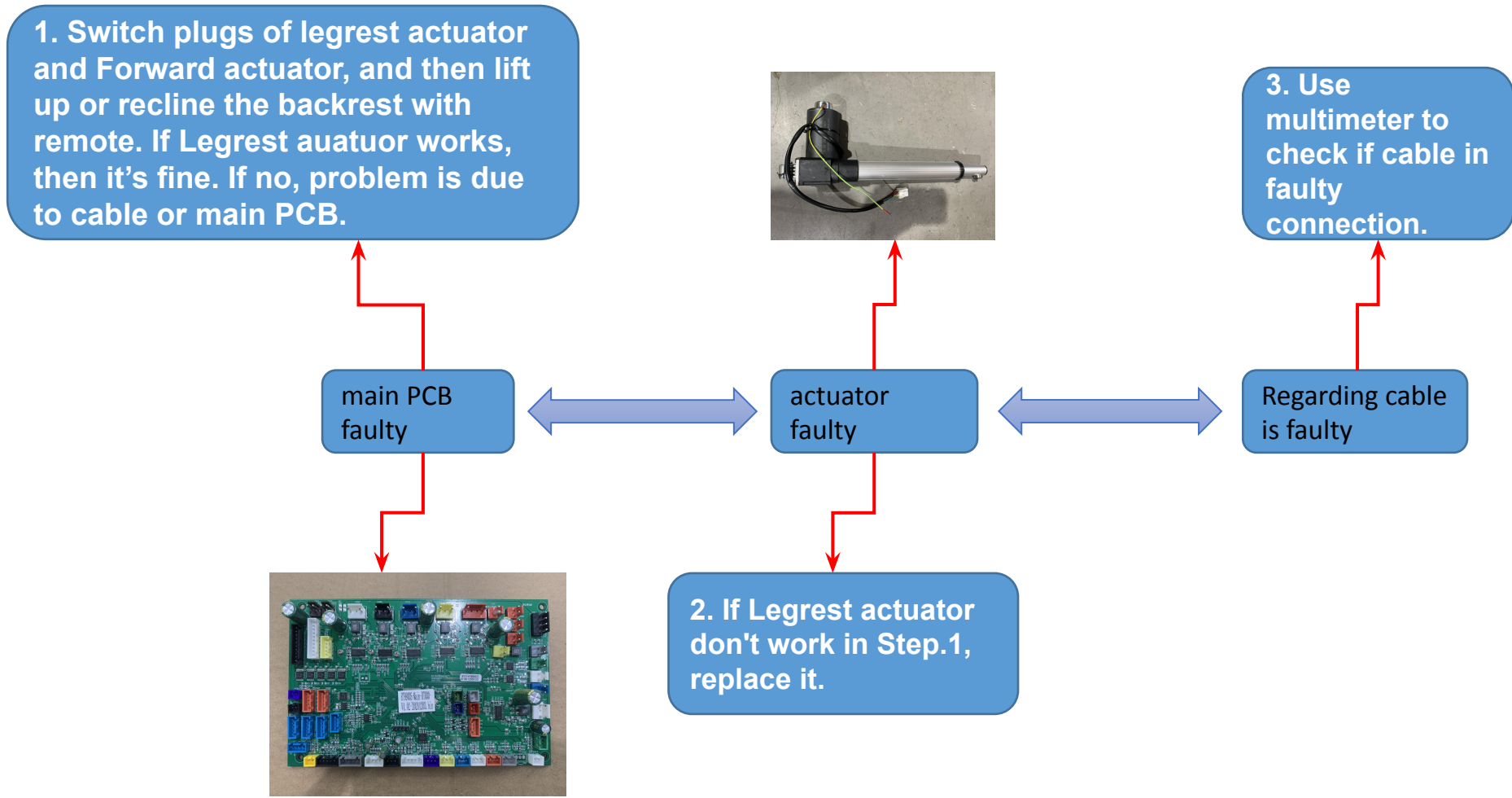


2. If it push forward/backward in Step.1, it means motor is fine and there is faulty connection on cable/plugs or mech PCB or 3D signal PCB.

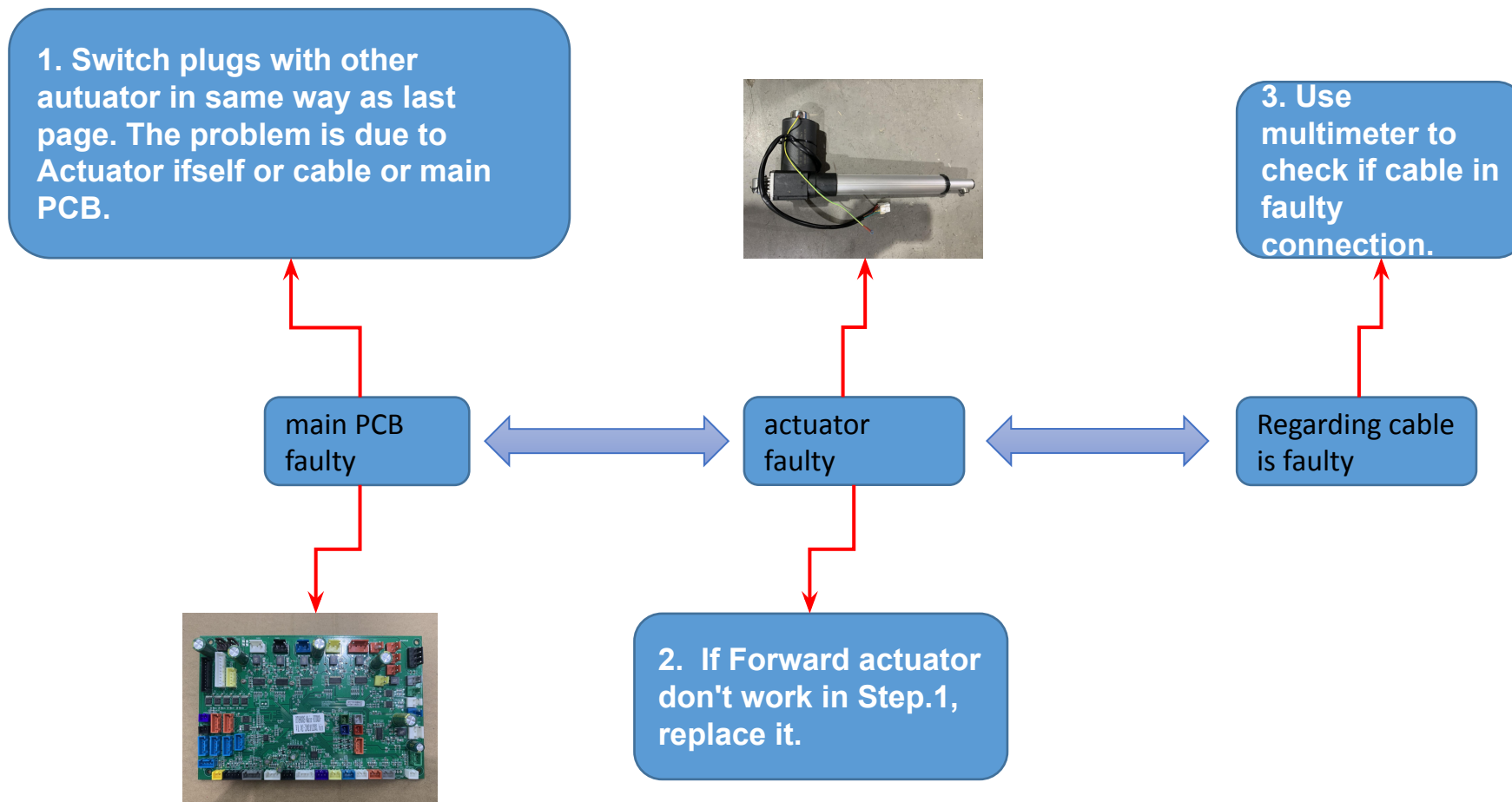


4. Turn multimeter to "Sound" mode and test the cable if there is faulty connection.

# 8. Legrest actuator don't work



# 9. Forward actuator don't work



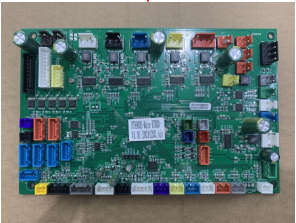
# 10. Backrest actuator don't work

1. Same way to find problem as last page.

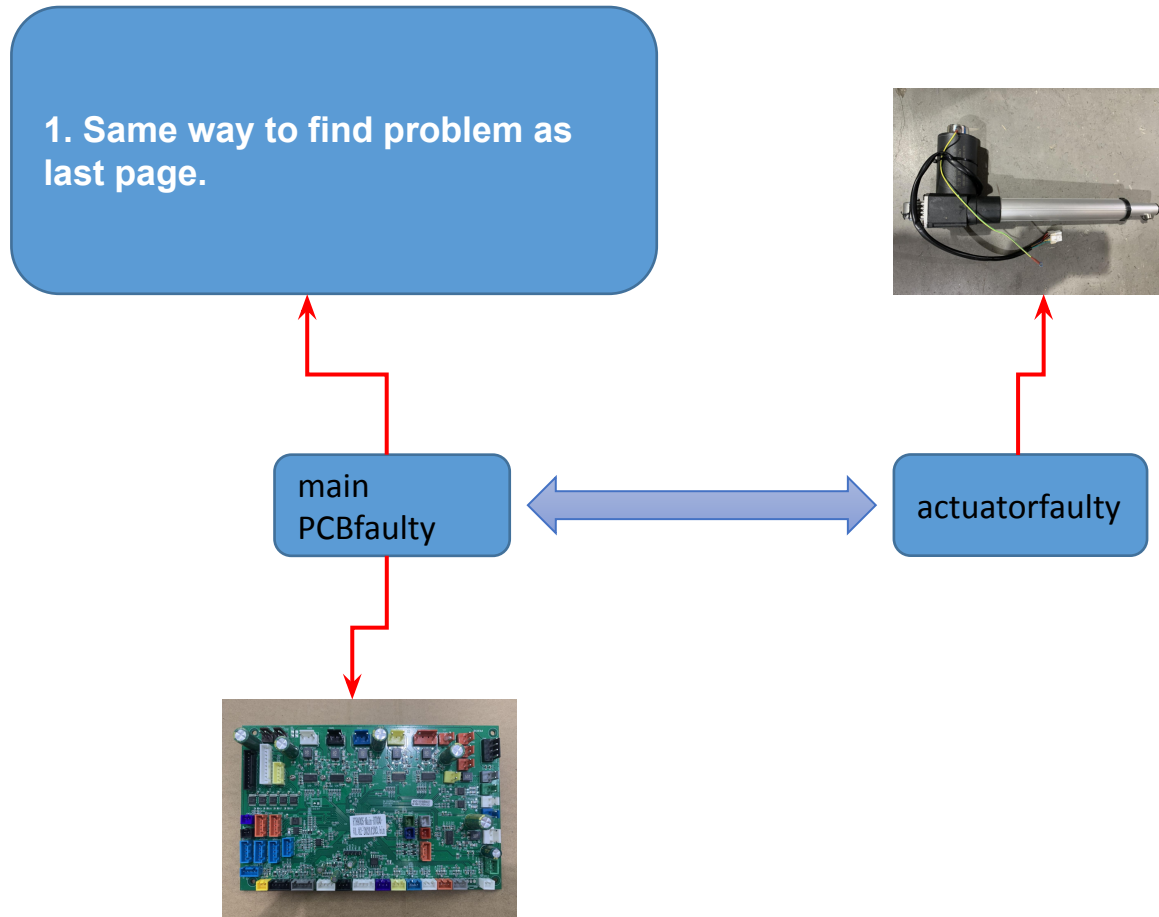


main PCB  
faulty

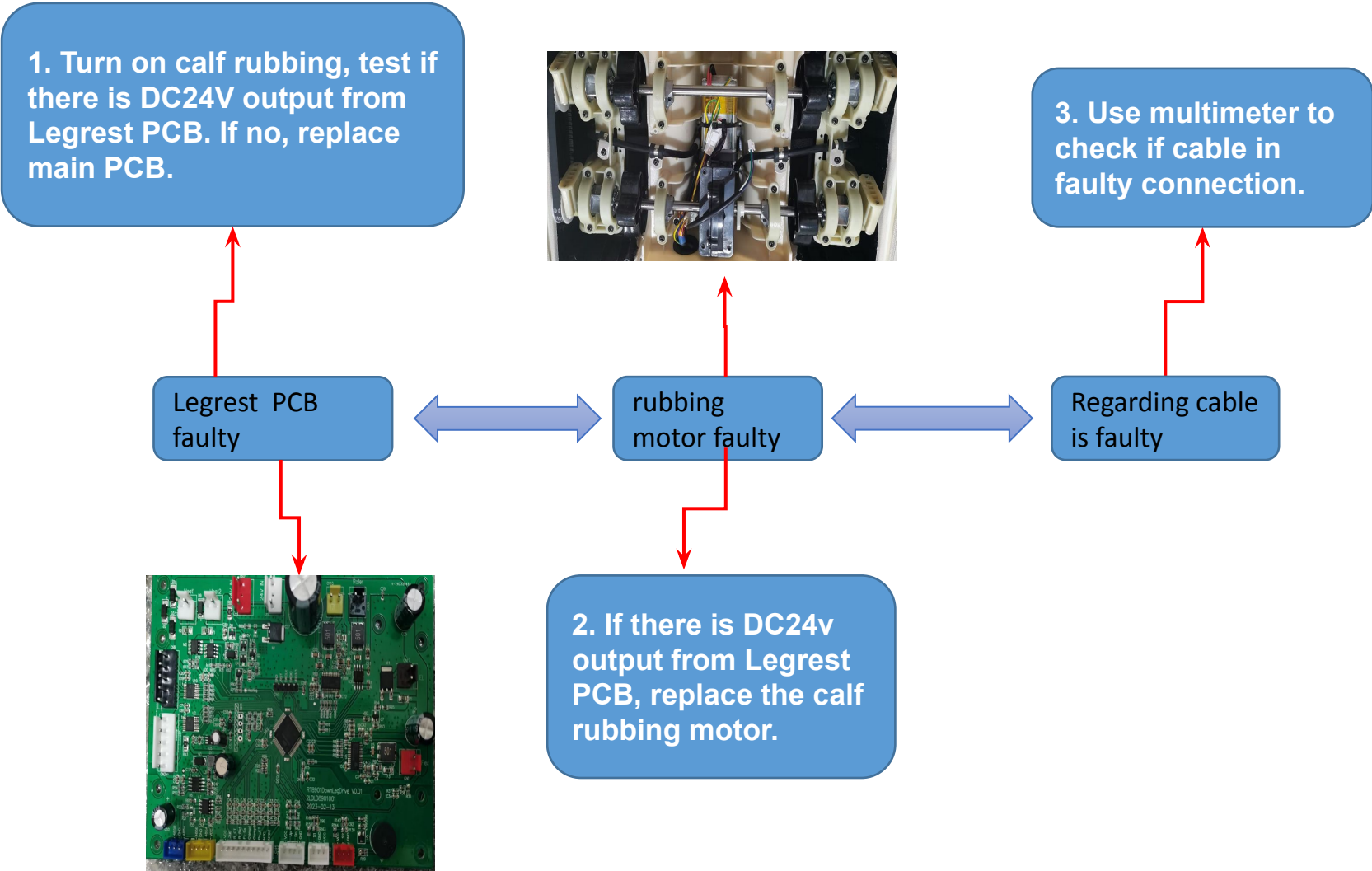
actuator  
faulty



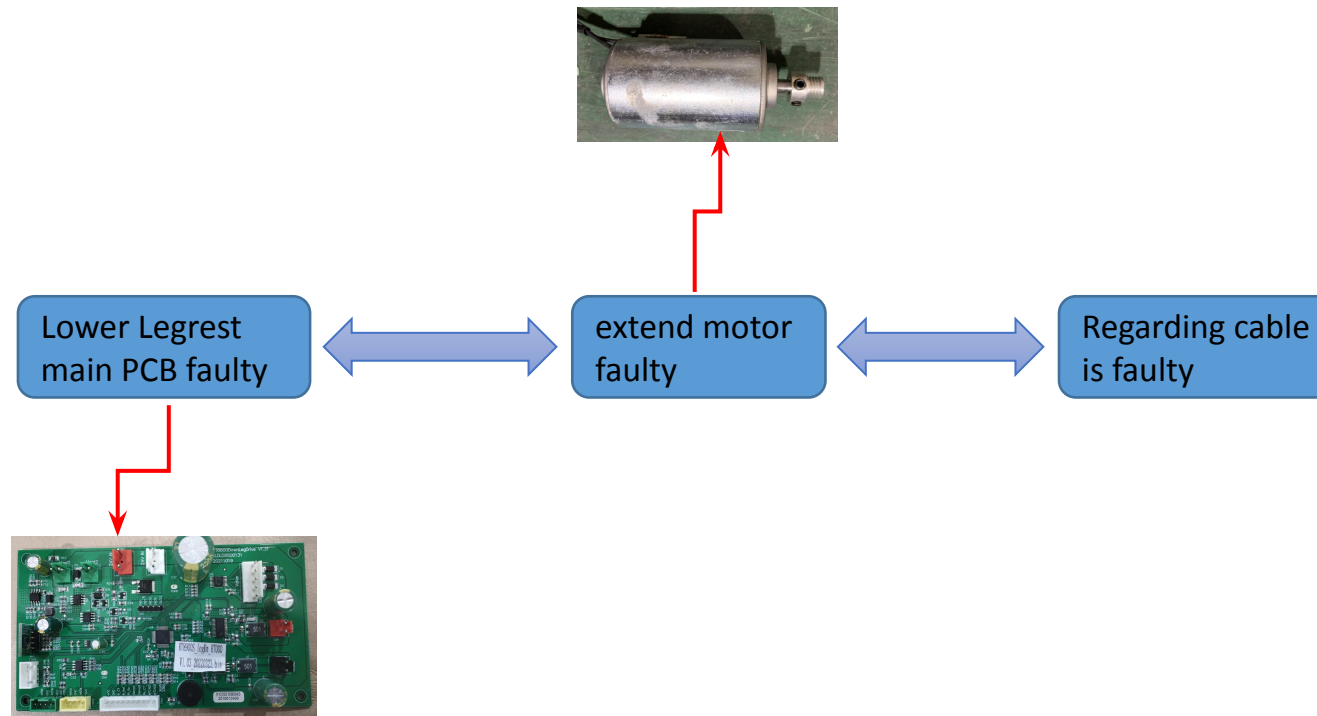
# 11. Zero gravity actuator don't work



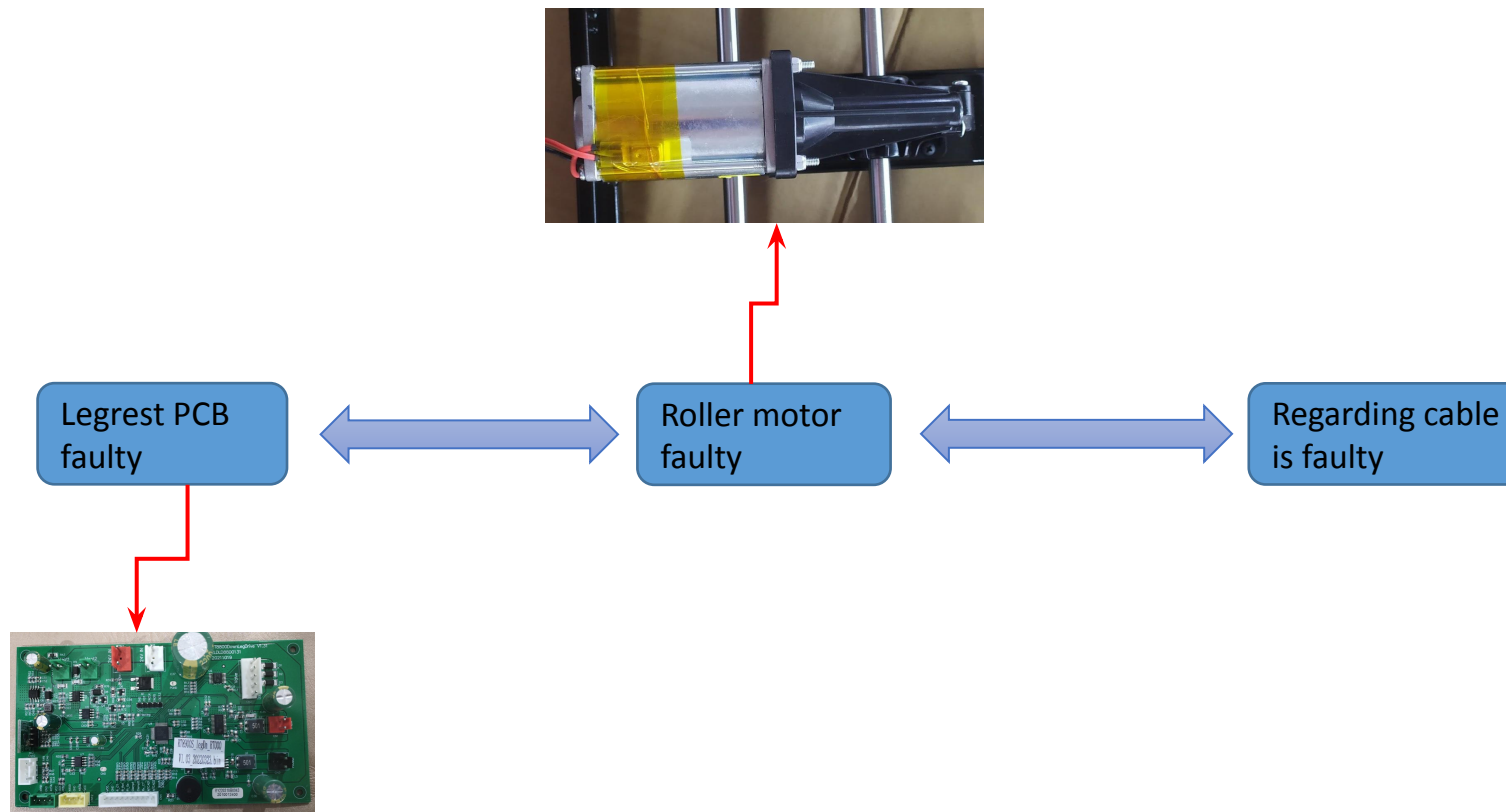
# 12. Calf rubbing motor don't work



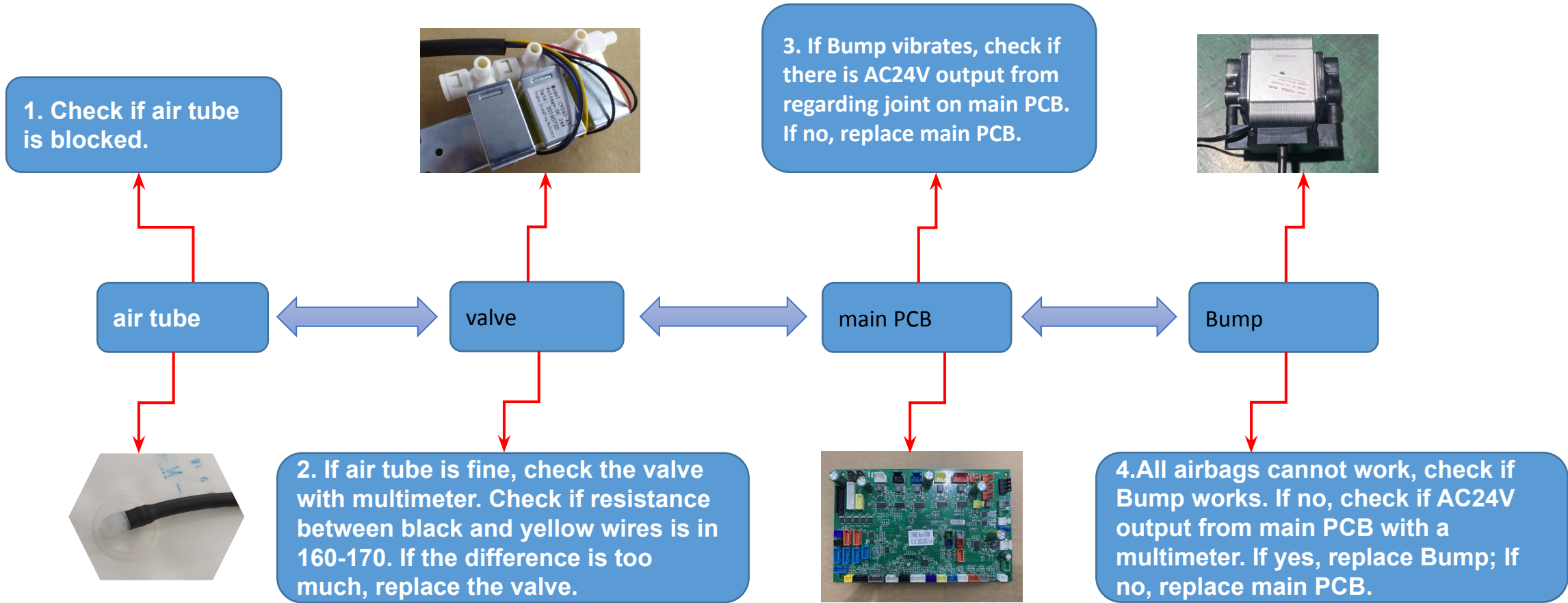
# 13. Legrest extension motor don't work



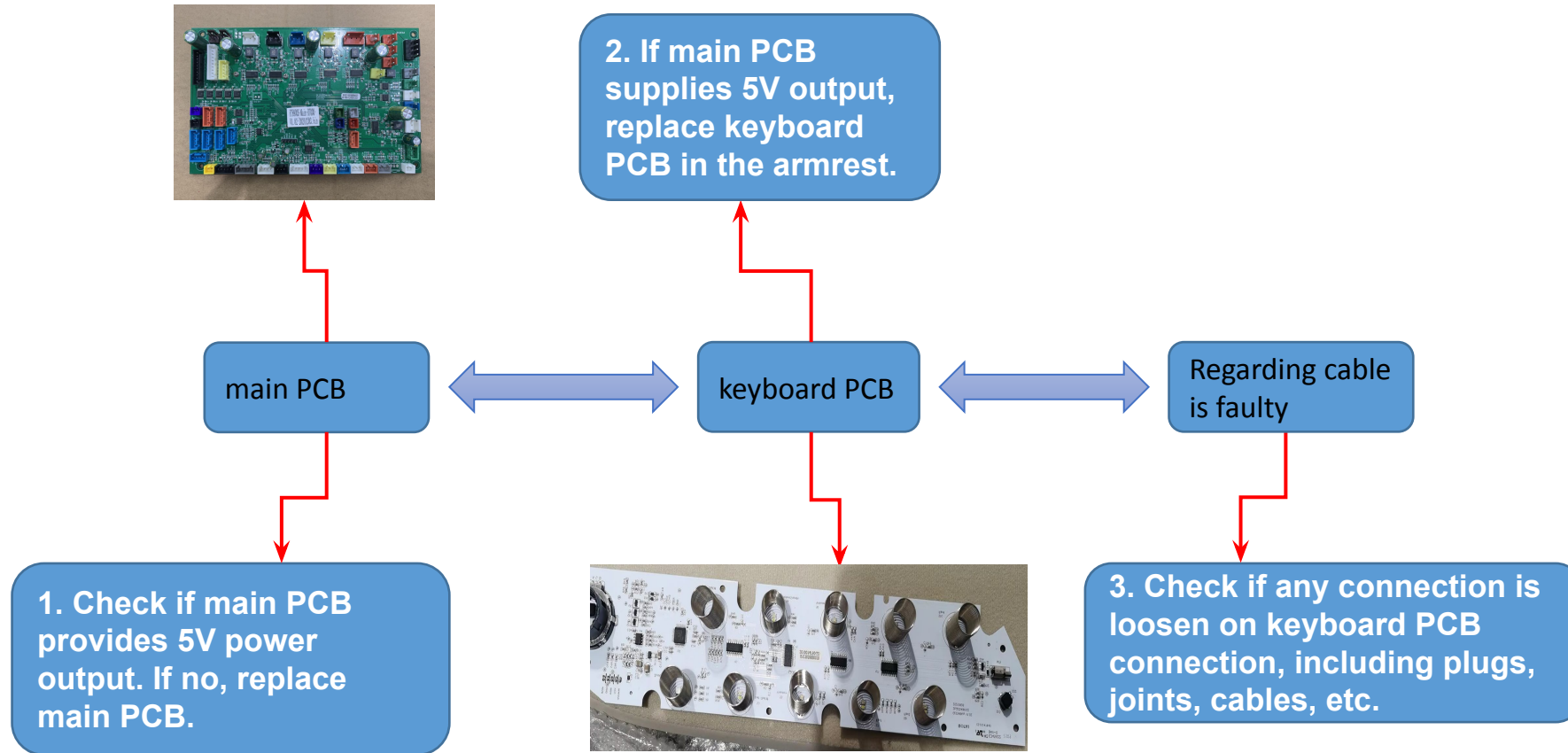
# 14. Foot roller motor don't work



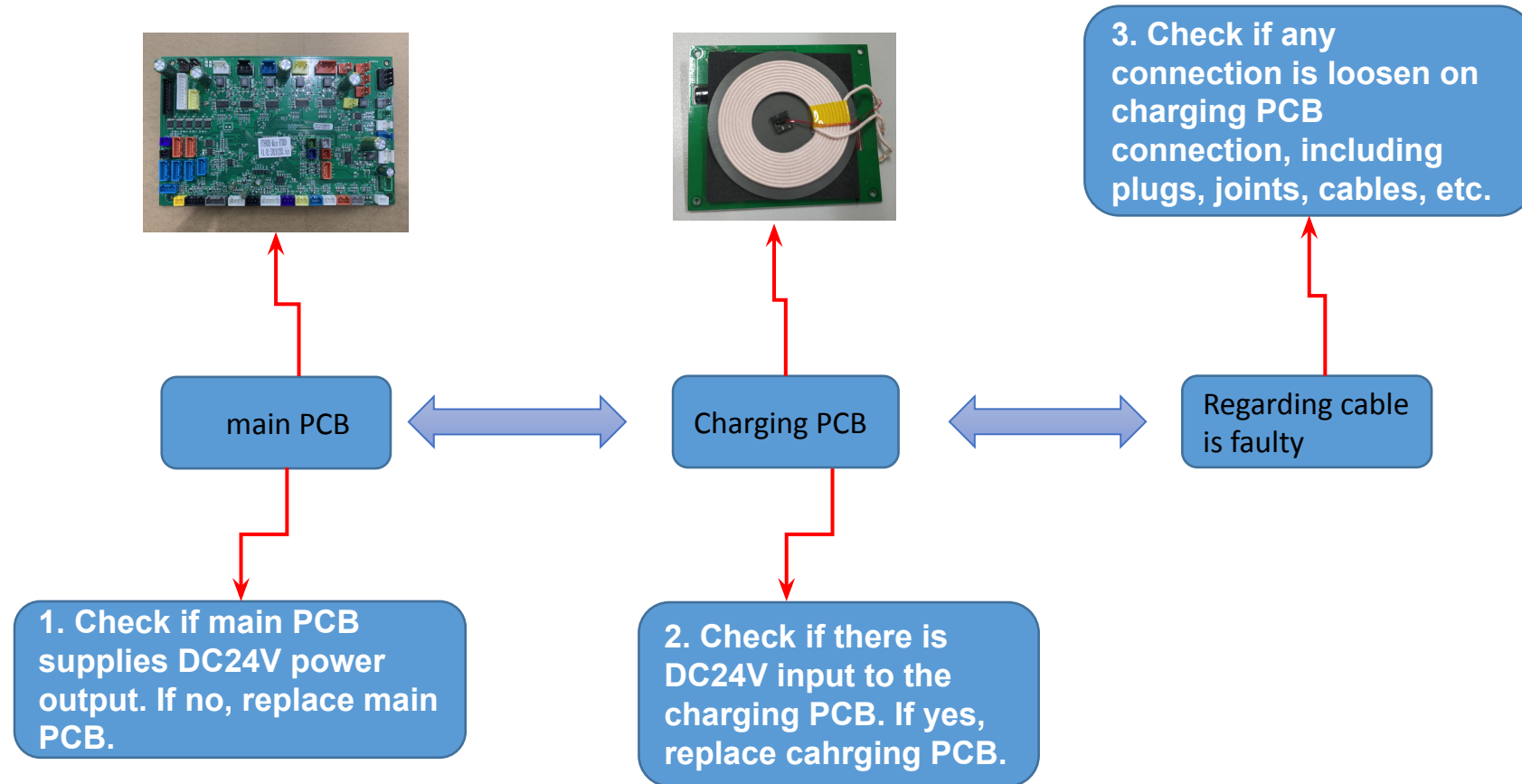
# 15. Airbags don't work



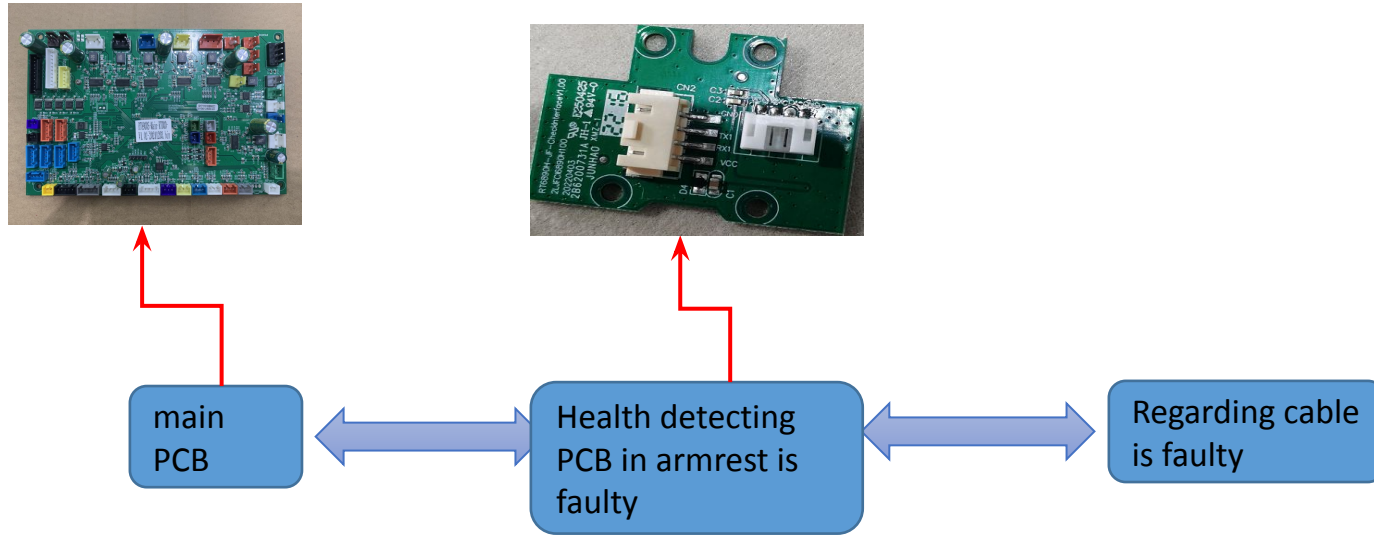
# 16. keyboard PCB don't work



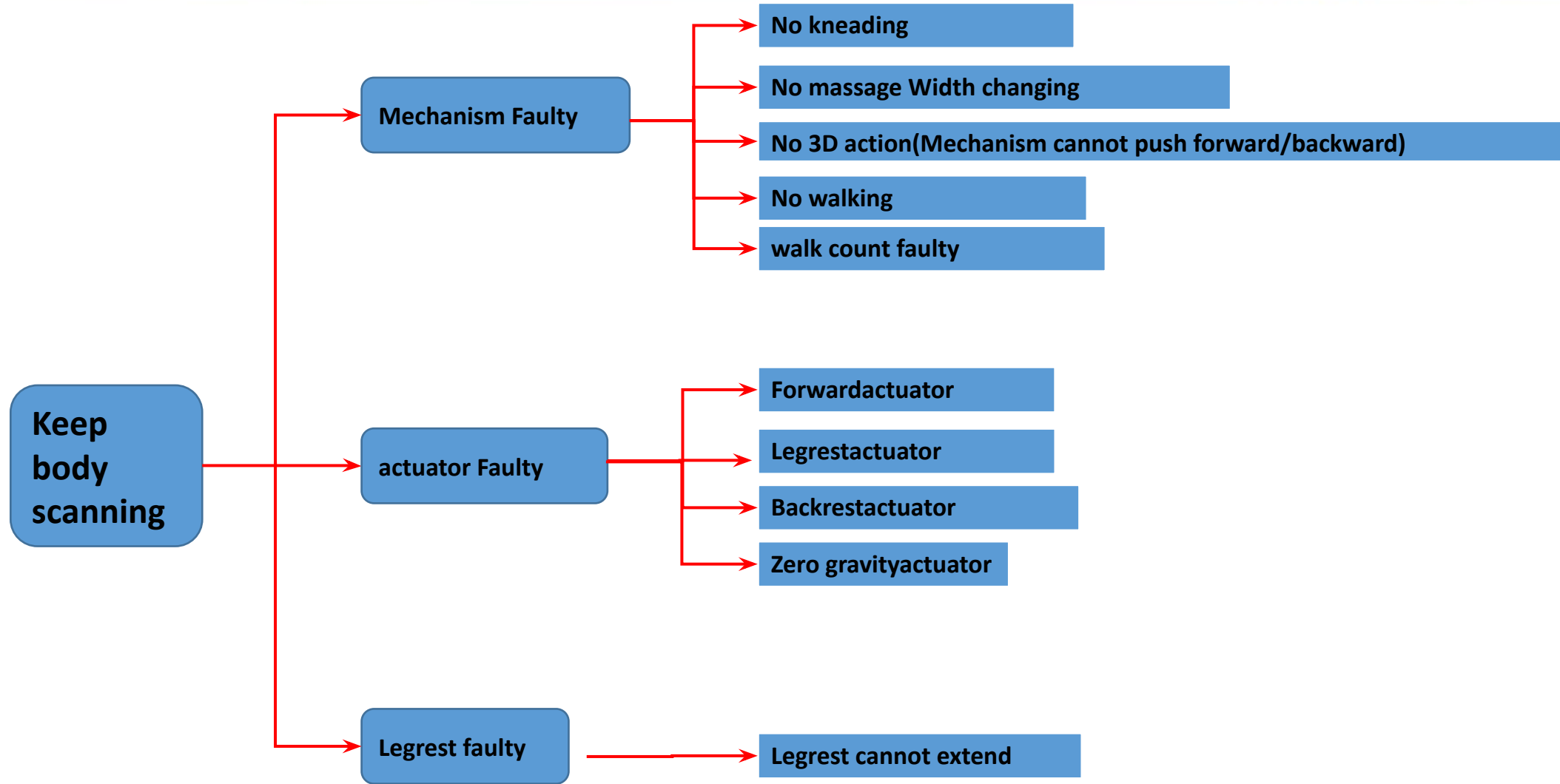
# 17. No wireless charging



# 19. Health detecting cannot success



# 20. Keep body scanning



**ROTAI**  
荣泰



**Be more professional**

2023/08/15