

**ROTAI**  
荣泰



# **RT-A70PLUS Massage Chair Maintenance Instruction**

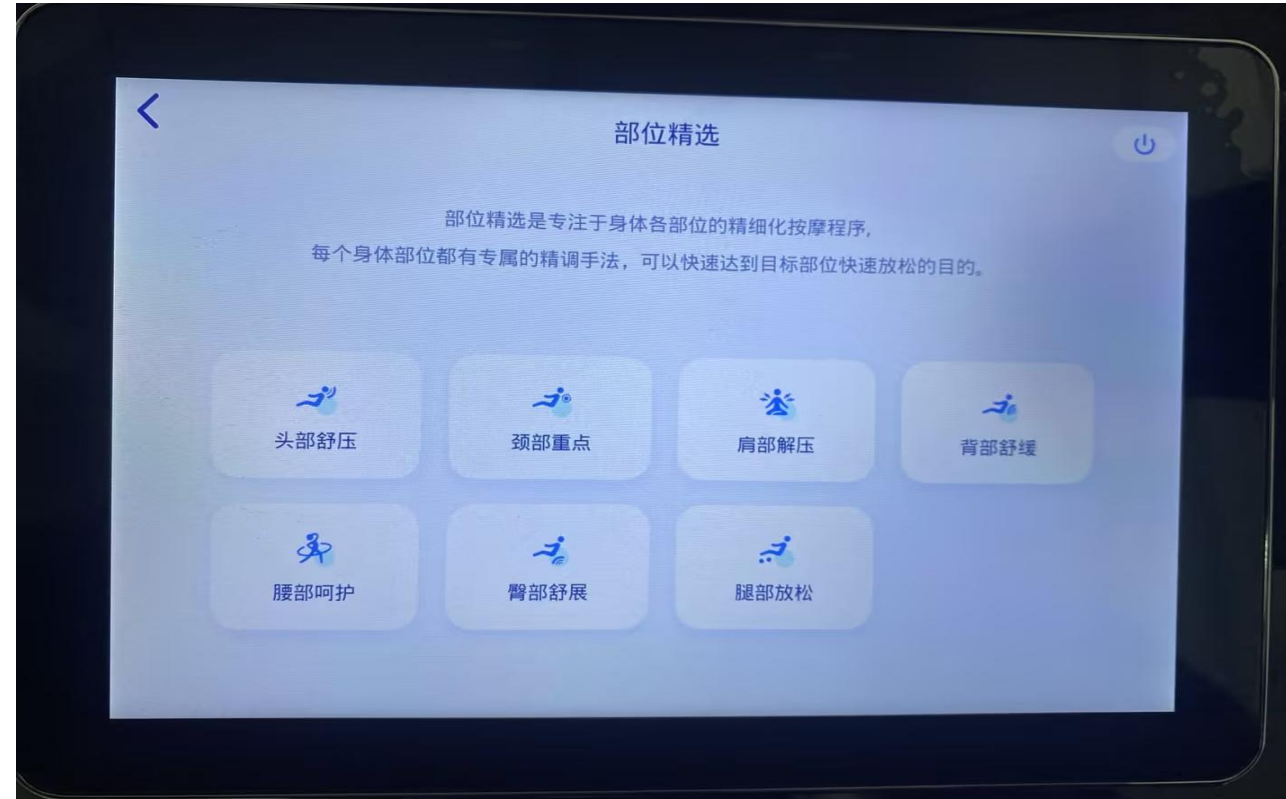
# Detailed parameters

	Configuration	Parameters
<b>Mechanism</b>	Upper mechanism: 30# airbag mechanism	
	Lower mechanism: 11# mechanism	
<b>Track</b>	Flexible track	Upper track: 1100mm Lower track: 200mm
<b>Legrest</b>	Footrest lift actuator	Distance: 106mm
<b>Back</b>	Backrest actuator	Distance: 145mm
<b>Airbag</b>	46 full-body wrap-around airbags	Leg airbag: 20, Valve count: 3; Foot airbag: 12, Valve count: 4; Arm airbag: 8, Valve count: 4; Shoulder airbag: 6, Valve count: 2; Other areas mechanism: Valve count: 2.
<b>Air pump</b>	Main air pump	Working voltage: AC24V
	11# mechanism air pump	Working voltage: DC24V
<b>Heating</b>	Two large heating areas: Backrest, legrest	Backrest heating pad*2: Carbon fiber heating pad: Max surface temperature 52°C; Size: 120*370mm; Power: 26W; Legrest heating pad*4: Graphene heating pad: Max surface temperature 47°C; Size: 120*160mm; Power: 16W;
<b>Upgraded</b>	8-inch Touch LCD Panel	8 inches, wired, touch
	Armrest quick buttons	Rotary Switch functions: Long press to power on/off, knob to adjust massage intensity, single click to switch massage programs, default massage time 20 minutes. Independent button functions: Coffee mode, game mode, nap mode, zero-gravity mode, airbags, body part selection, heating switch, backrest up/down, auto program, all buttons are mechanical; Backrest up/down supports long press mode, single point trigger.
	ROTAI Smart App	Compatible with iOS 10.0+ and Android 5.0+; RONGTAI smart app scans to connect via Bluetooth; Supports massage chair upgrades; Supports app expansion.
<b>Safety</b>	1 Area Anti-pinch Sensor	Power box and rear cover
<b>Phone Charging</b>	USB charging	USB charging: 5V, 2A
<b>Speaker</b>	Wireless Bluetooth stereo sound	Bluetooth connection via mobile phone for music playback, heavy bass speakers, maximum power 8W per speaker.
<b>Programs</b>	Auto programs: User group: 3 sets, Pain relief: 3 sets, Classic: 3 sets, Featured: 3 sets,	User Group: Women' s Massage, Men's Massage, Senior' s Joy Pain relief: Neck & Shoulder, Back & Spine, Waist & Hip Classic: Thai Massage, Ancient Massage, Muscle Pushing Featured: Fascia Master, Loosen Up, Full Extension, Focus: Head massage, neck massage, shoulder massage, back massage, waist massage, hip massage, leg massage



# Auto Massage Programs

ROTAI  
荣泰

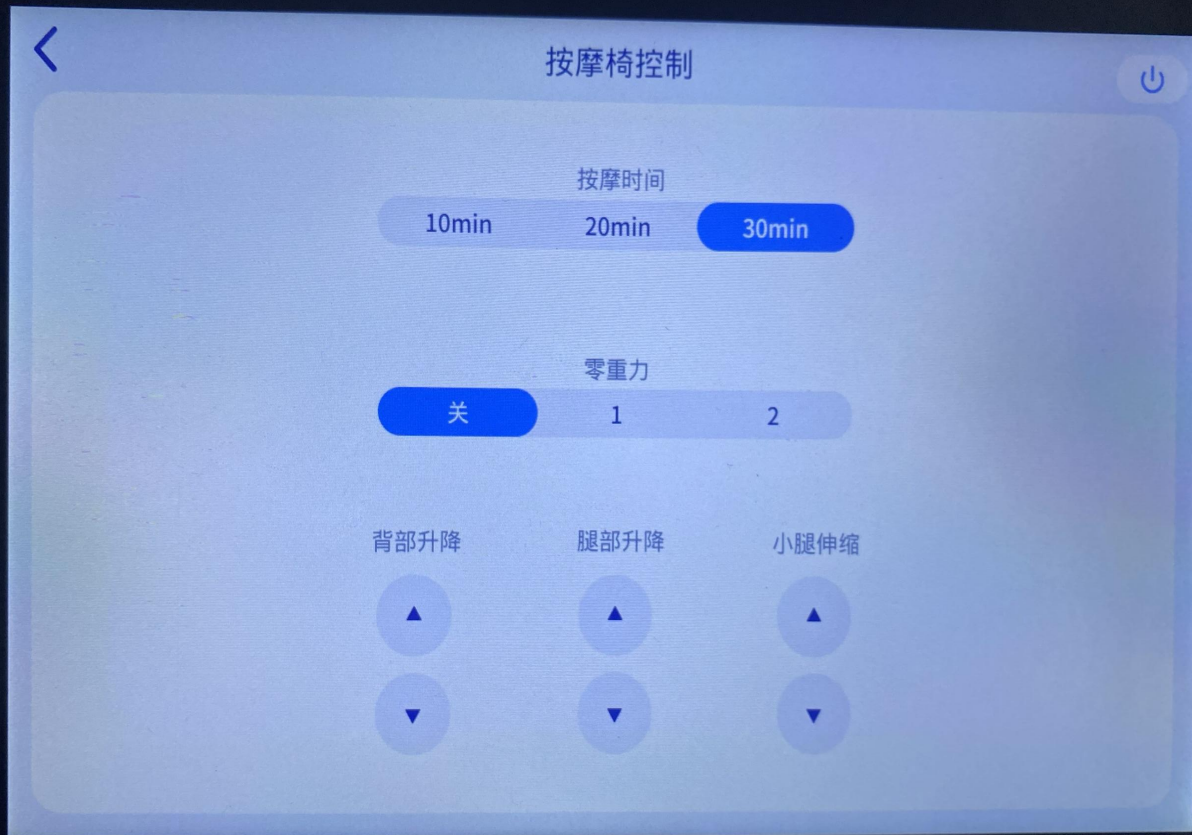


RT/E-SH001-2024

A/O

荣泰 更专业的按摩椅

# Massage Chair Control



## Zero-gravity

- Adjustable zero-gravity: 1/2 positions

## Massage Time

- Adjustable massage time: 10/20/30 minutes

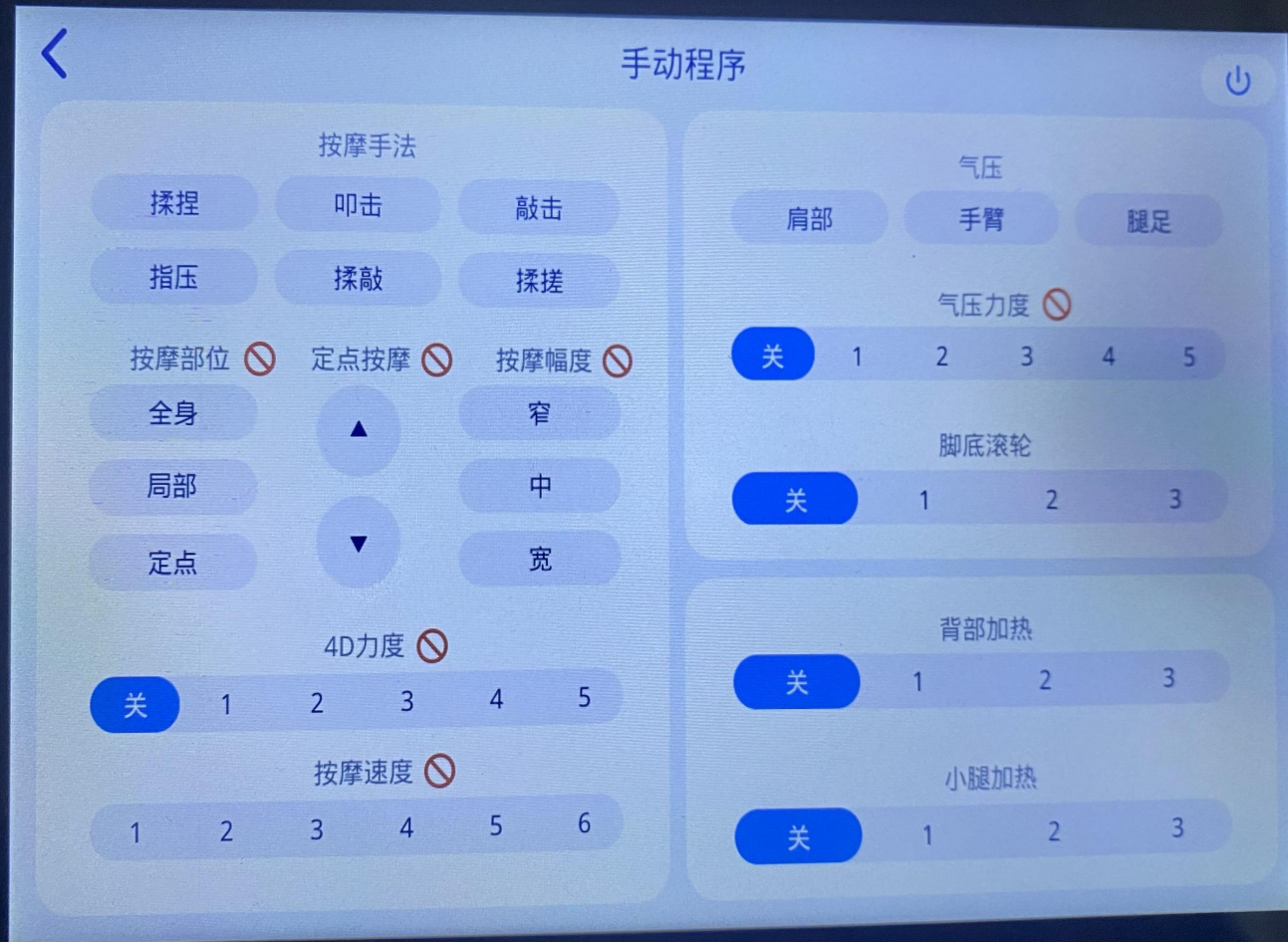
## Angle Adjustment

- Backrest actuator up/down
- Legrest actuator up/down
- Extend/Retract

RT/E-SH001-2024

A/0

# Manual Options



## Techniques

Kneading  
Knocking  
Shiatsu

Sync  
Tapping  
Rubbing

## Massage Part

Whole  
Partial  
Point

**Massage Width**  
Wide  
Medium  
Narrow

## 4D Intensity

Power On/Off  
1,2,3,4,5 3D strength

Massage Speed  
1,2,3,4,5,6 massage speed

## Air pressure

- Adjustable air pressure areas
- Adjustable air pressure intensity

## Foot Rollers

- Adjustable foot roller speed: 3 levels

## Back Heat

- Adjustable calf heating temperature: 3 levels

## Leg heating

- Adjustable calf heating temperature: 3 levels

## Foot heating

- Adjustable foot heating temperature: 3 levels

RT/E-SH001-2024

A/O

# How to enter engineering mode



Fig. 1

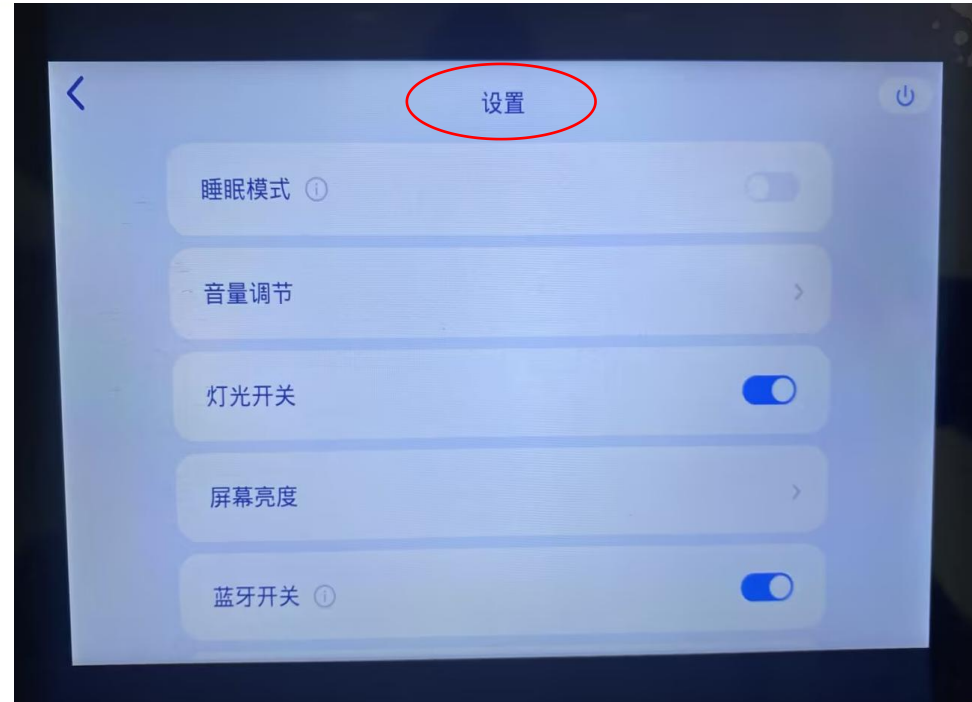


Fig. 2

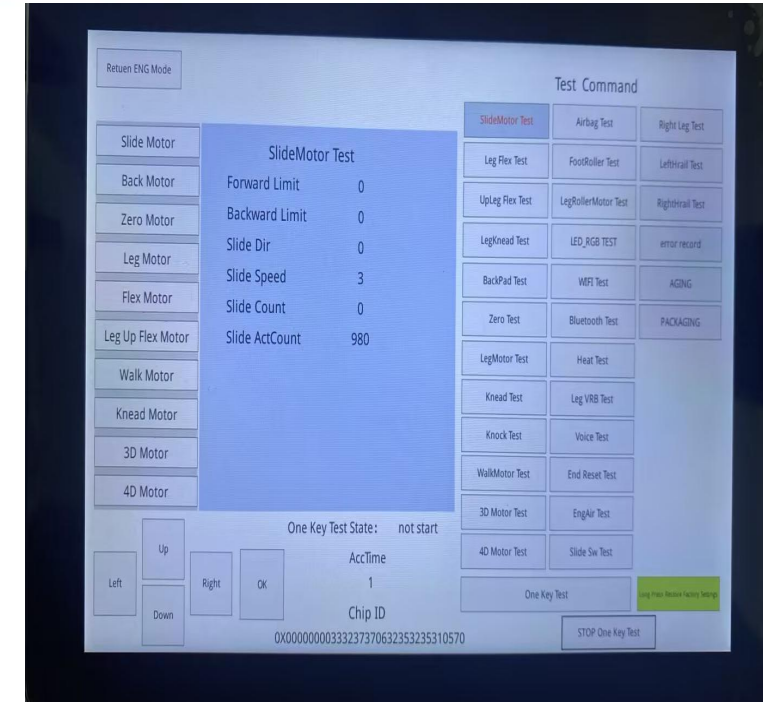


Fig. 3

Click to set as shown in fig. 1

Double-click top to set as shown in fig. 2

Enter engineering mode as shown in fig. 3

# Legrest Installation



Fig. 1

Connect air tube  
and harness as Fig. 1

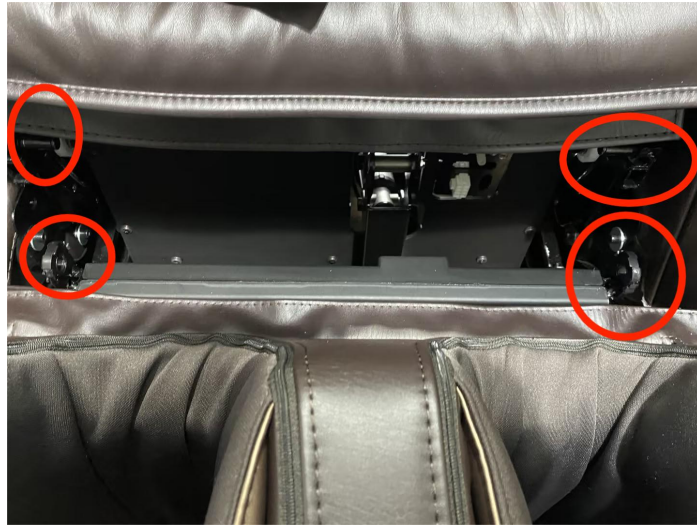


Fig. 2

Fit the hook in shaft of  
chair body as Fig. 2



Fig. 3

Fix clips on both  
sides as Fig. 3



Fig. 4

Zip it up as Fig. 4



# Armrest Removal



Fig. 1

Remove 4 marked screws as shown in fig. 1



Fig. 2

Remove 2 marked screws as shown in fig. 2



Fig. 3

Unzip marked shoulder zipper as shown in fig. 3



Fig. 4

Remove 1 marked screw as shown in fig. 4

# Armrest Removal



Fig. 1

Lower backrest to the bottom before removing 3 marked screws as shown in fig. 1

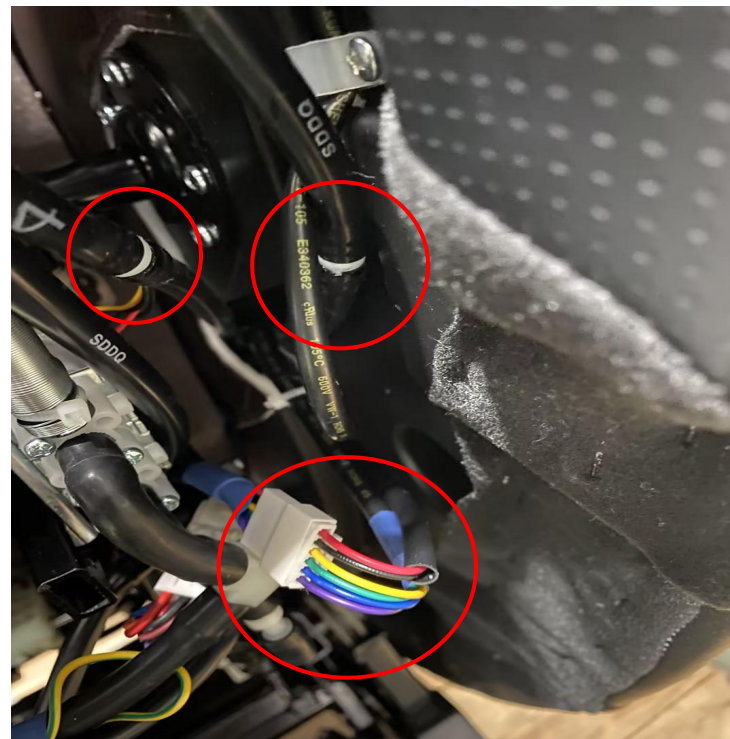


Fig. 2

Disconnect marked armrest connector and air hose as shown in fig. 2

# Footrest Panel Removal



Fig. 1

Remove 1 marked screws as shown in fig. 1

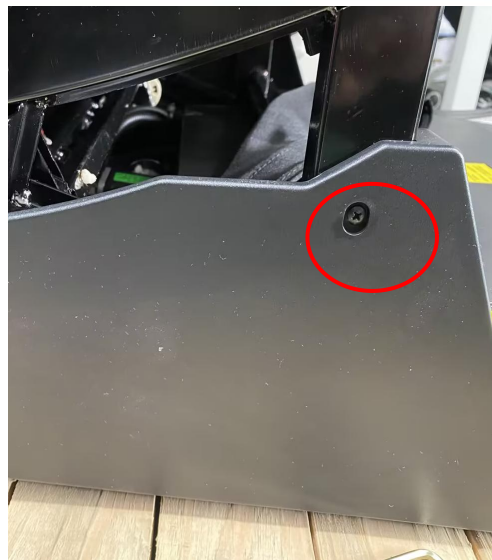


Fig. 2

Remove 1 marked screw as shown in fig. 2



Fig. 3

Remove 1 marked screw as shown in fig. 3



Fig. 4

Remove 1 marked screw as shown in fig. 4

# Front Panel Removal

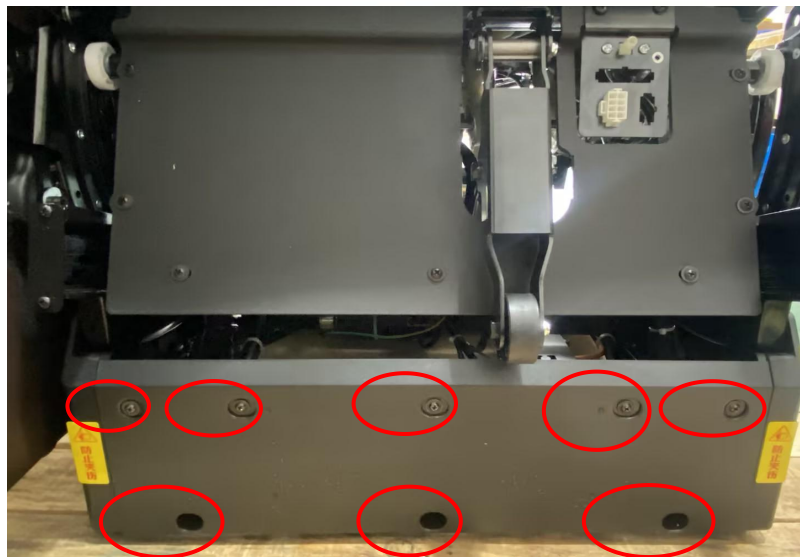


Fig. 1

Remove 8 marked  
screws as shown in fig.  
1

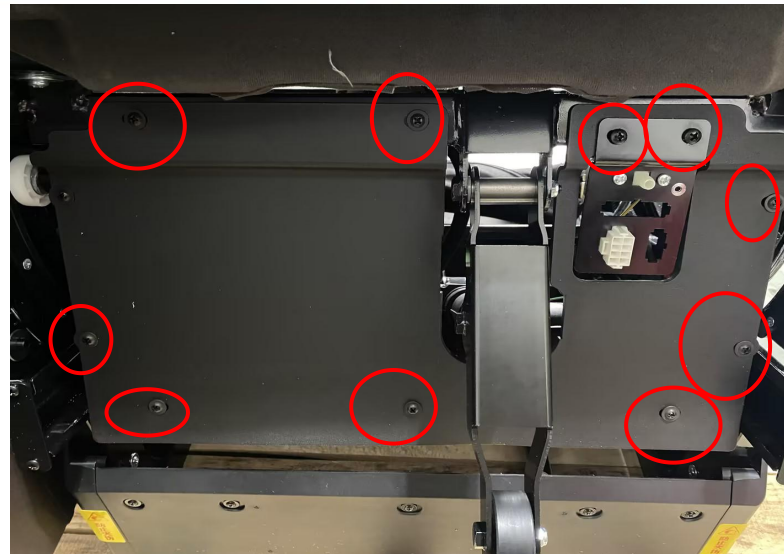


Fig. 2

Remove 10 marked  
screws as shown in fig.  
2

# Head Cover Removal



Fig. 1

Remove 1 marked screw from each side as shown in fig. 1

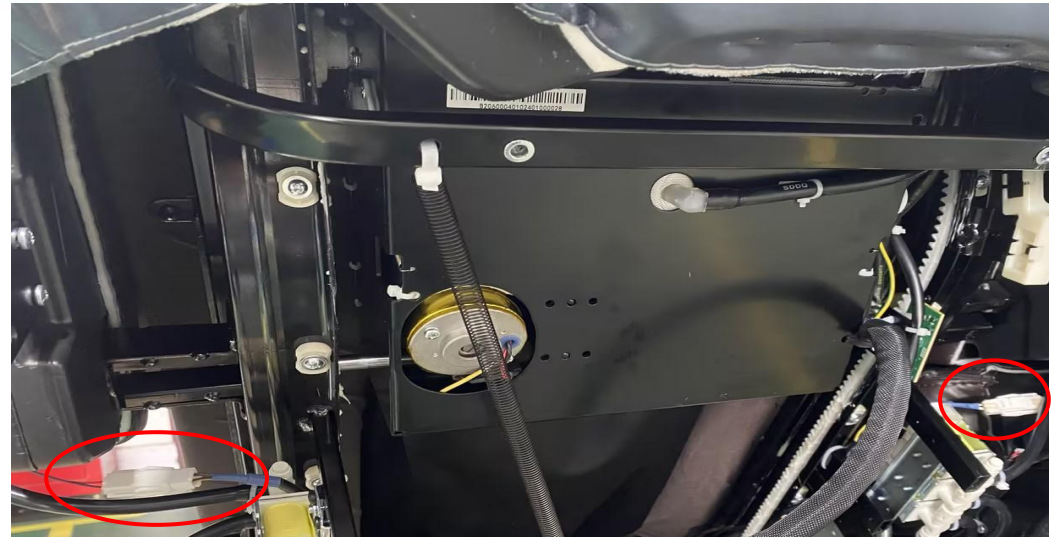


Fig. 2

Disconnect left and right speaker connectors as shown in fig. 2

# Legrest Removal

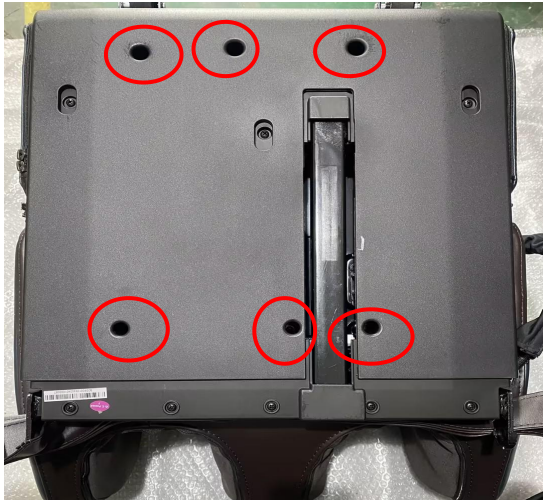


Fig. 1

Remove 6 marked screws as shown in fig. 1

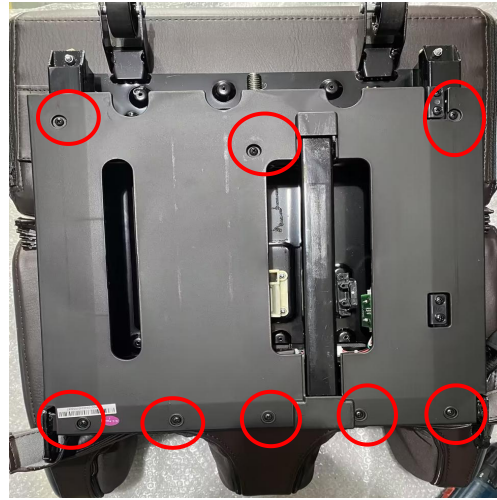


Fig. 2

Remove 8 marked screws as shown in fig. 2

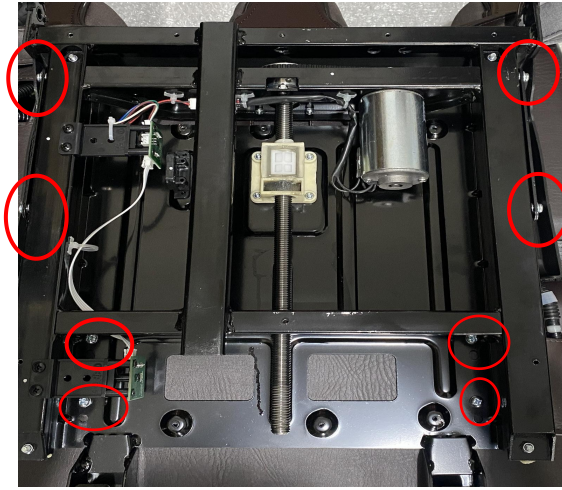


Fig. 3

Remove 8 marked screw as shown in fig. 3

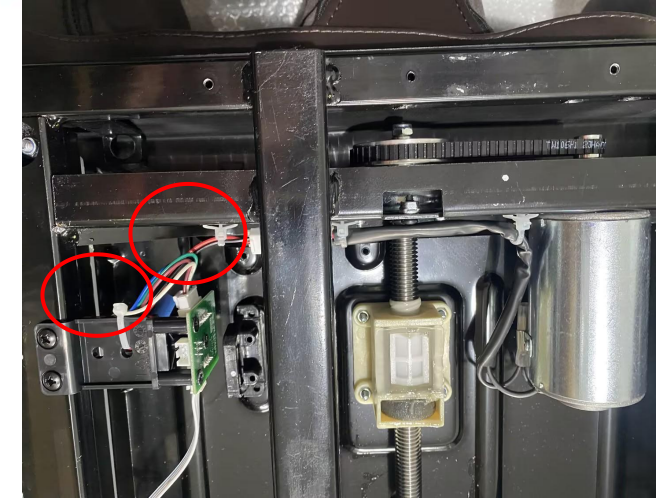


Fig. 4

Disconnect 2 marked connectors as shown in fig. 4

# Legrest Removal

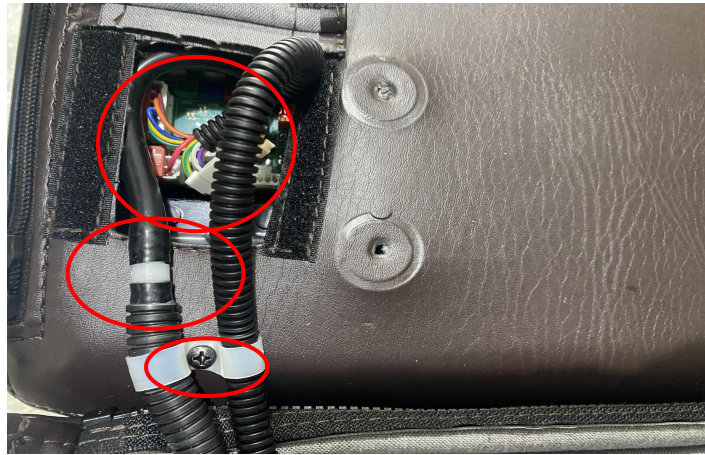


Fig. 1

Remove 1 marked screw and disconnect air hose and connector as shown in fig. 1



Fig. 2



Fig. 3

Unzip marked zipper as shown in figs. 2 and 3

# Legrest Removal



Fig. 1

Remove the marked leather cover as shown in fig. 1



Fig. 2

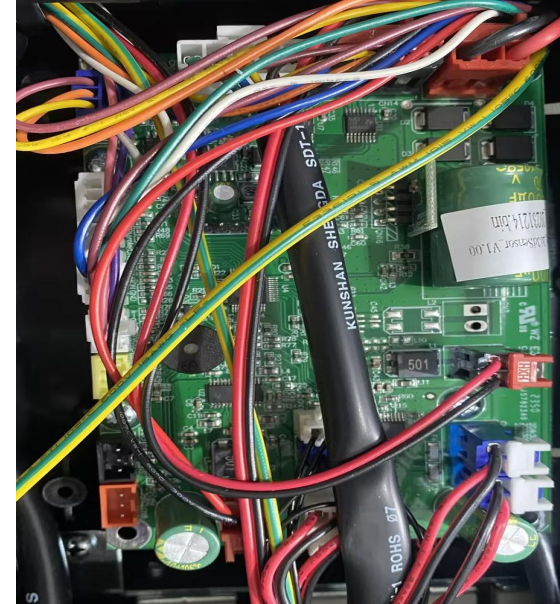


Fig. 3

Remove 2 marked screws to reveal the mainboard as shown in figs. 2 and 3



# Legrest Removal



Fig. 1

Unzip marked zipper as shown in fig. 1



Fig. 2

Remove 6 marked screws to reveal the transfer board as shown in figs. 2 and 3

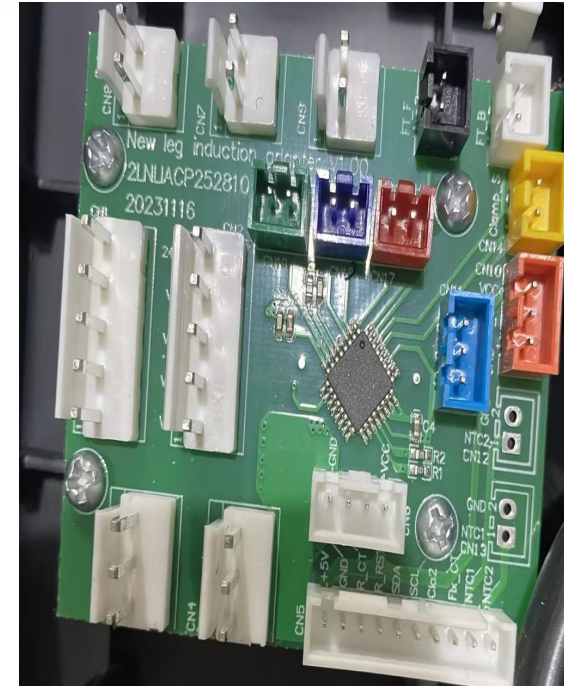


Fig. 3

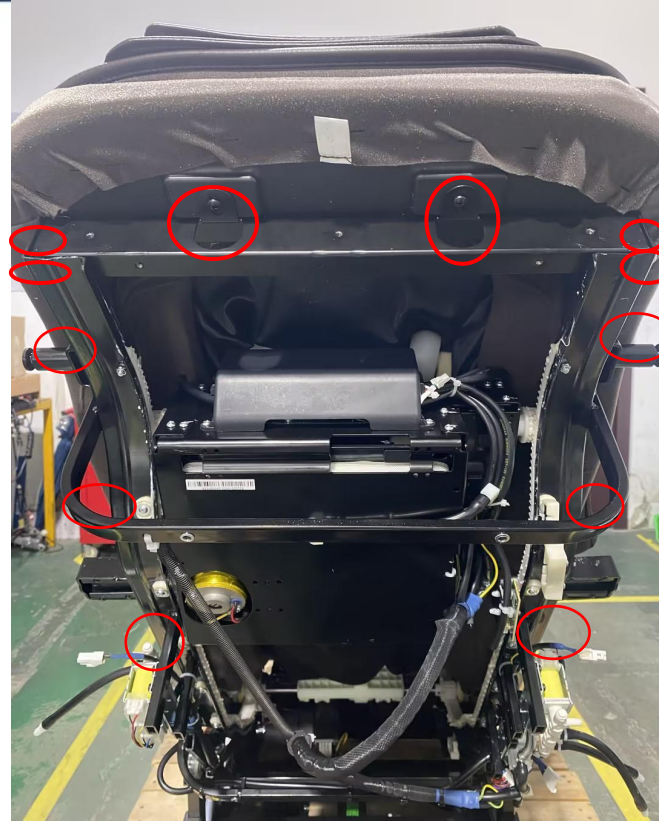


Fig. 1

Remove 12 marked screws as shown in fig. 1

# Upper Mechanism Removal

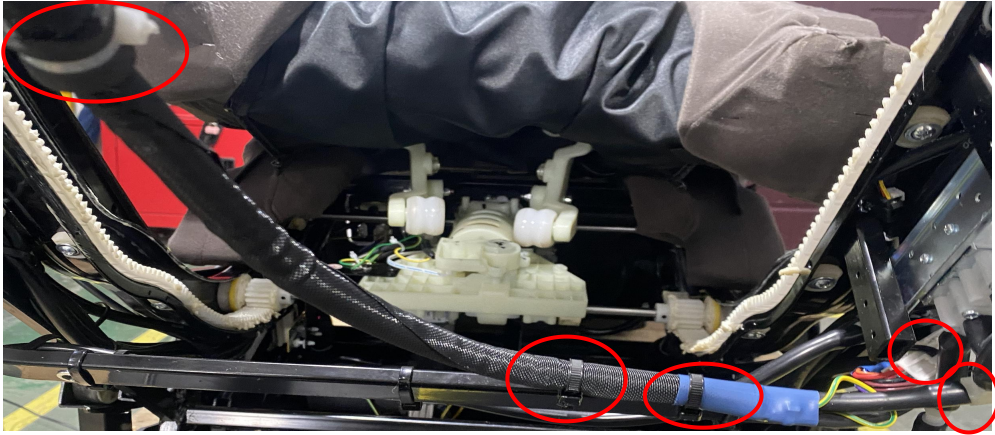


Fig. 1

Cut off marked ties and unplug the air hose connector as shown in fig. 1



Fig. 2

Use a 24V external power source to adjust the walking motor and remove the mechanism as shown in fig. 2

# Lower Mechanism Removal



Fig. 1



Fig. 2



Fig. 3

Unzip marked zipper as shown in figs. 1, 2, and 3

# Lower Mechanism Removal

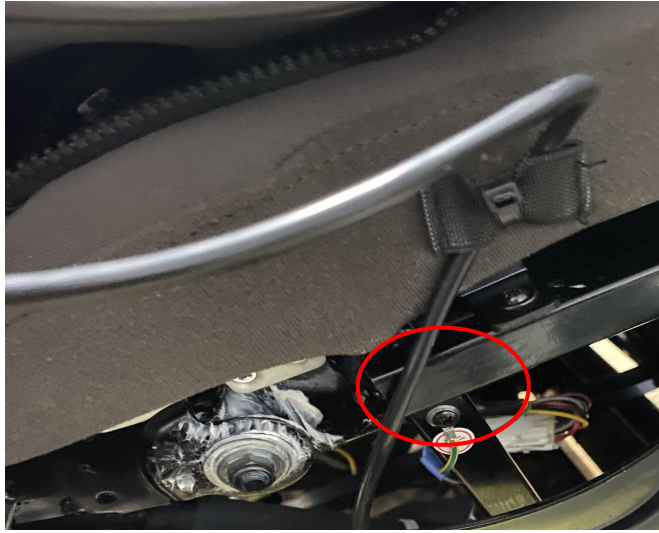


Fig. 1

Remove 1 marked screws  
as shown in fig. 1

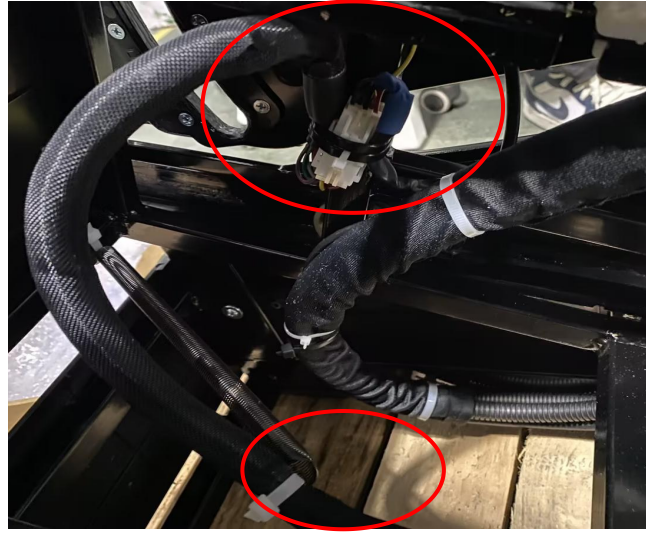


Fig. 2

Cut off marked ties and  
unplug connector as  
shown in fig. 2

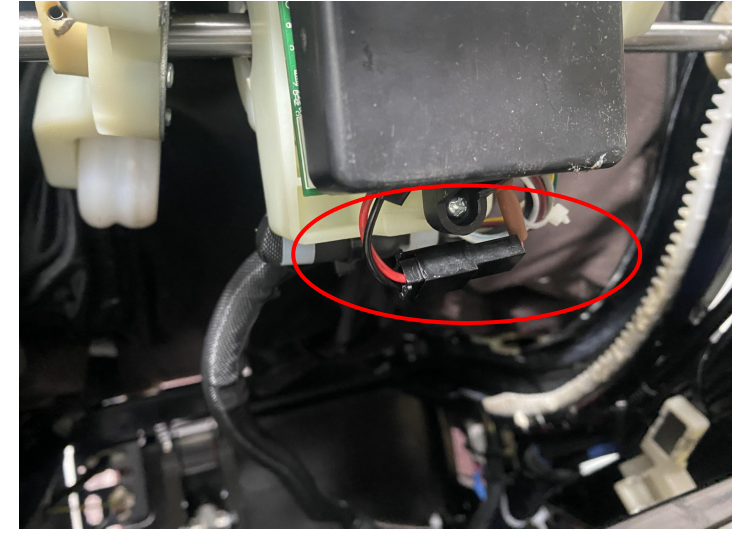


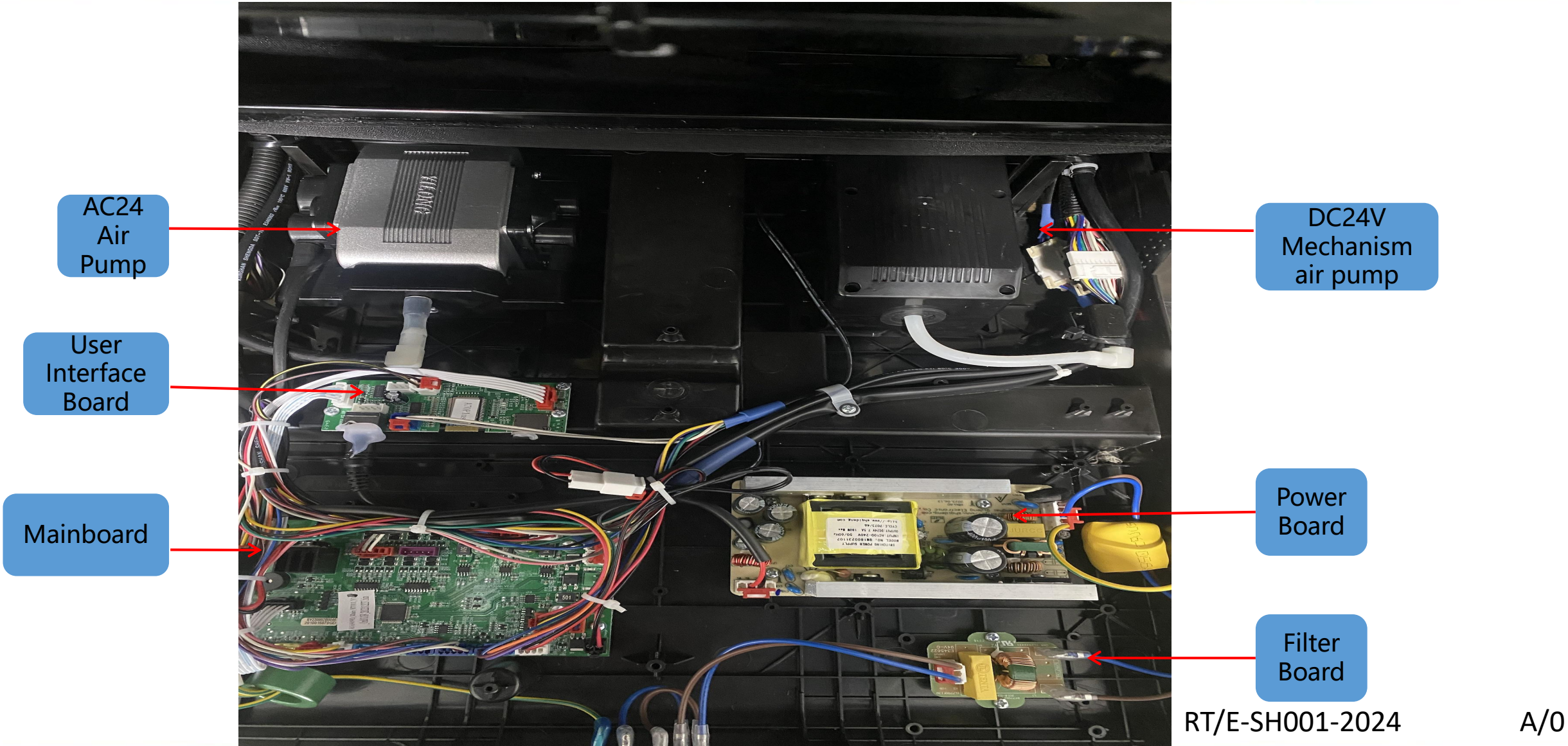
Fig. 3

Unplug the walking motor  
connector and use an  
external 24V power  
source to remove the  
mechanism as shown in

fig. 3  
RT/E-SH001-2024

A/0

# Power Box



AC24  
Air  
Pump

User  
Interface  
Board

Mainboard

DC24V  
Mechanism  
air pump

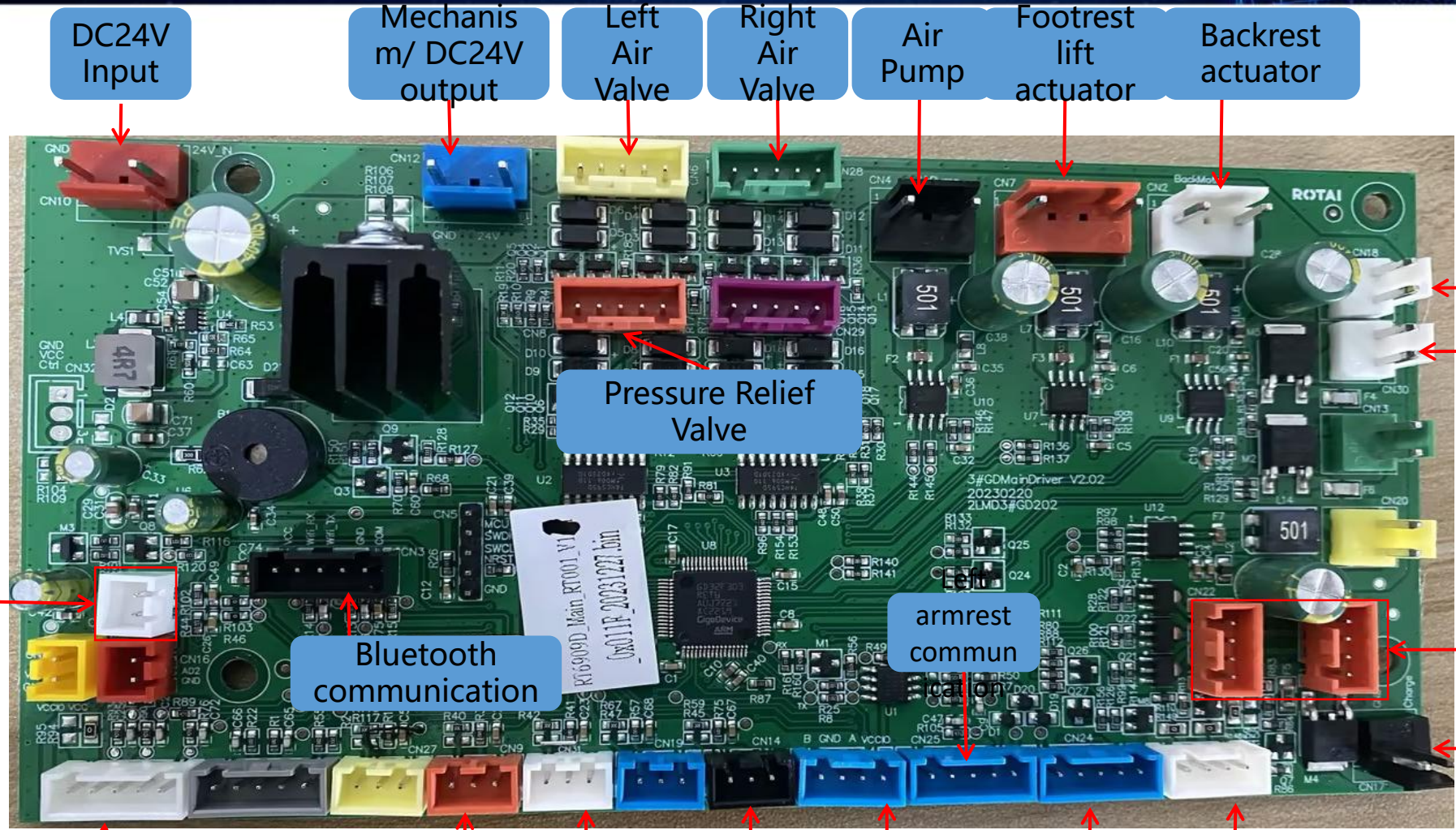
Power  
Board

Filter  
Board

RT/E-SH001-2024

A/0

# Mainboard Connector Distribution



DC24V Input

Mechanism/ DC24V output

Left Air Valve

Right Air Valve

Air Pump

Footrest lift actuator

Backrest actuator

Left Waist Heating

Right Waist Heating

Pressure Relief Valve

Waist heating temperature detection

Bluetooth communication

armrest communication

Left & right LED

USB charging

Controller communication

Leg Unit Actuator Counter

Backrest Recline Actuator Counter

Power Box Top panel cover Anti-pinch

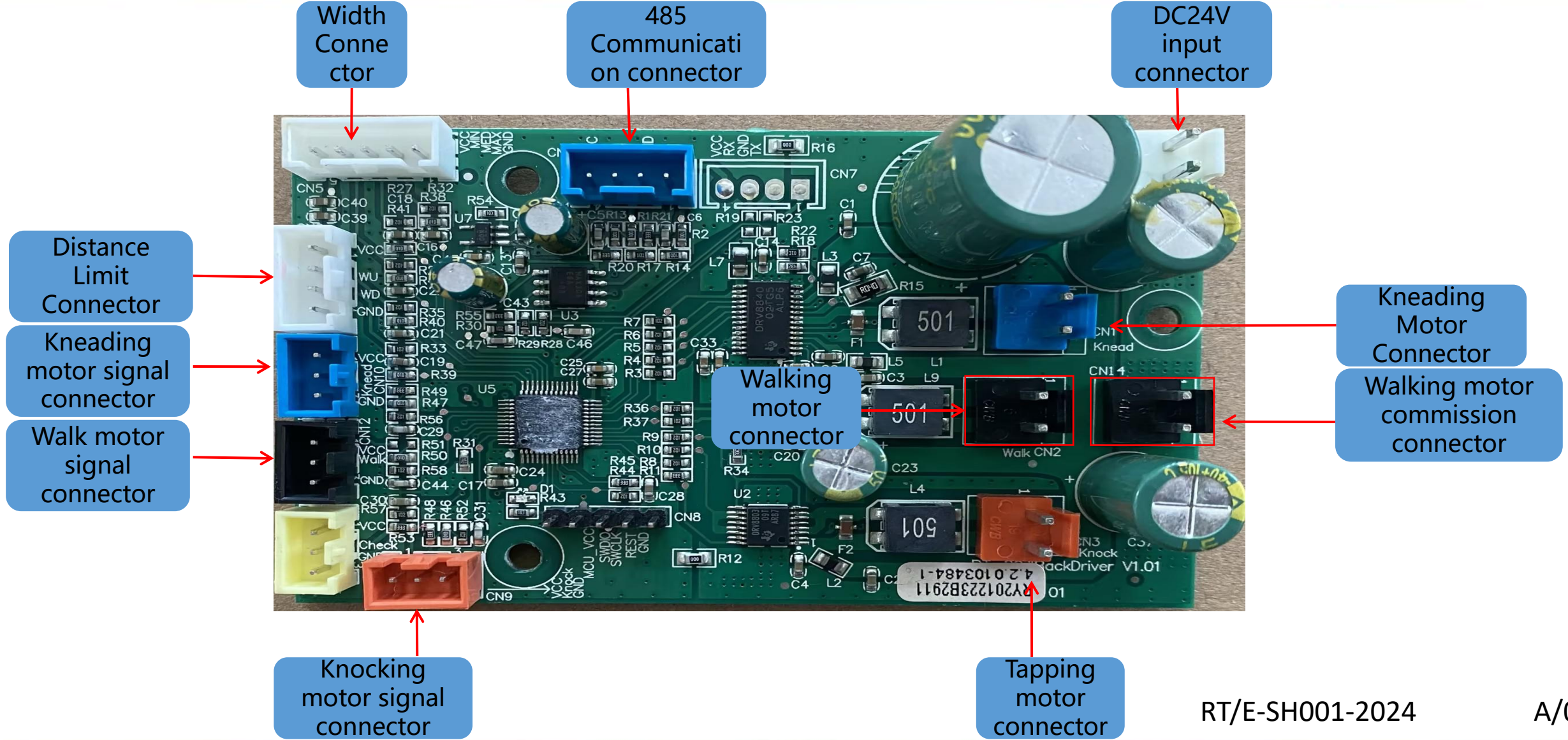
Footrest Communication

485 Mechanism Communication

DC air pump/fan

RT/E-SH001-2024

# Upper Mechanism Mainboard Connector Diagram

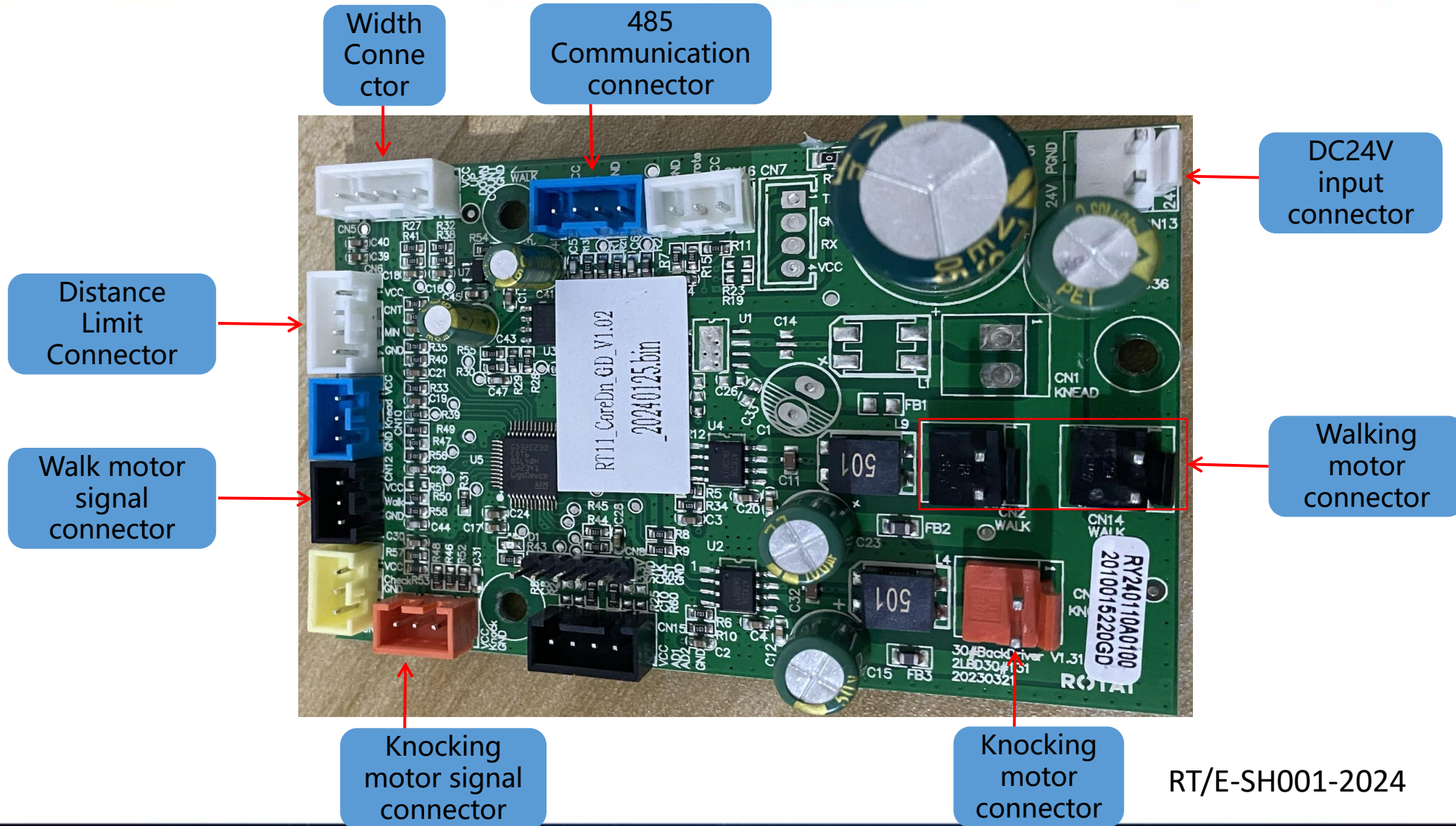


RT/E-SH001-2024

A/0



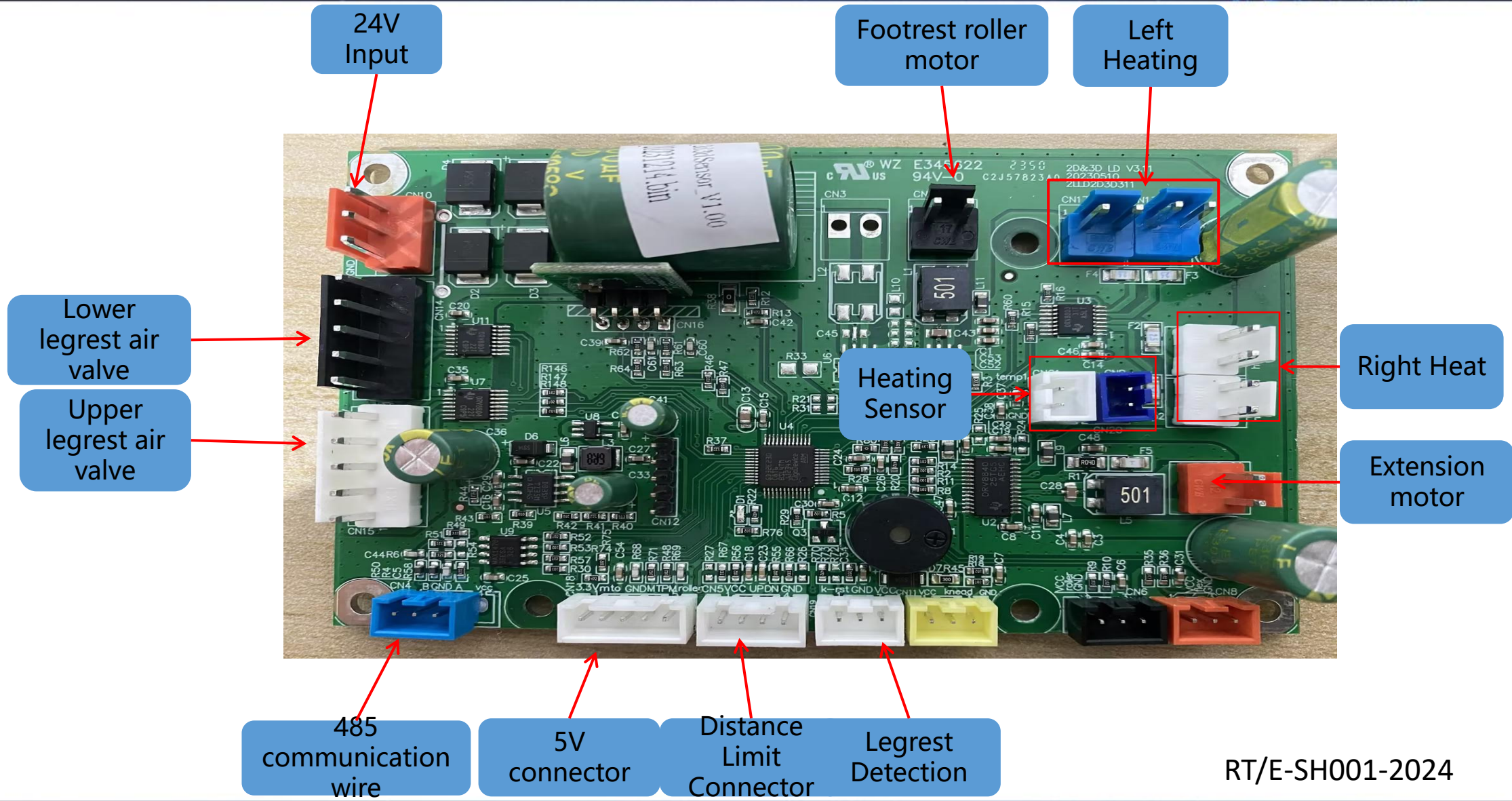
# Lower Mechanism Mainboard Connector



RT/E-SH001-2024

A/0

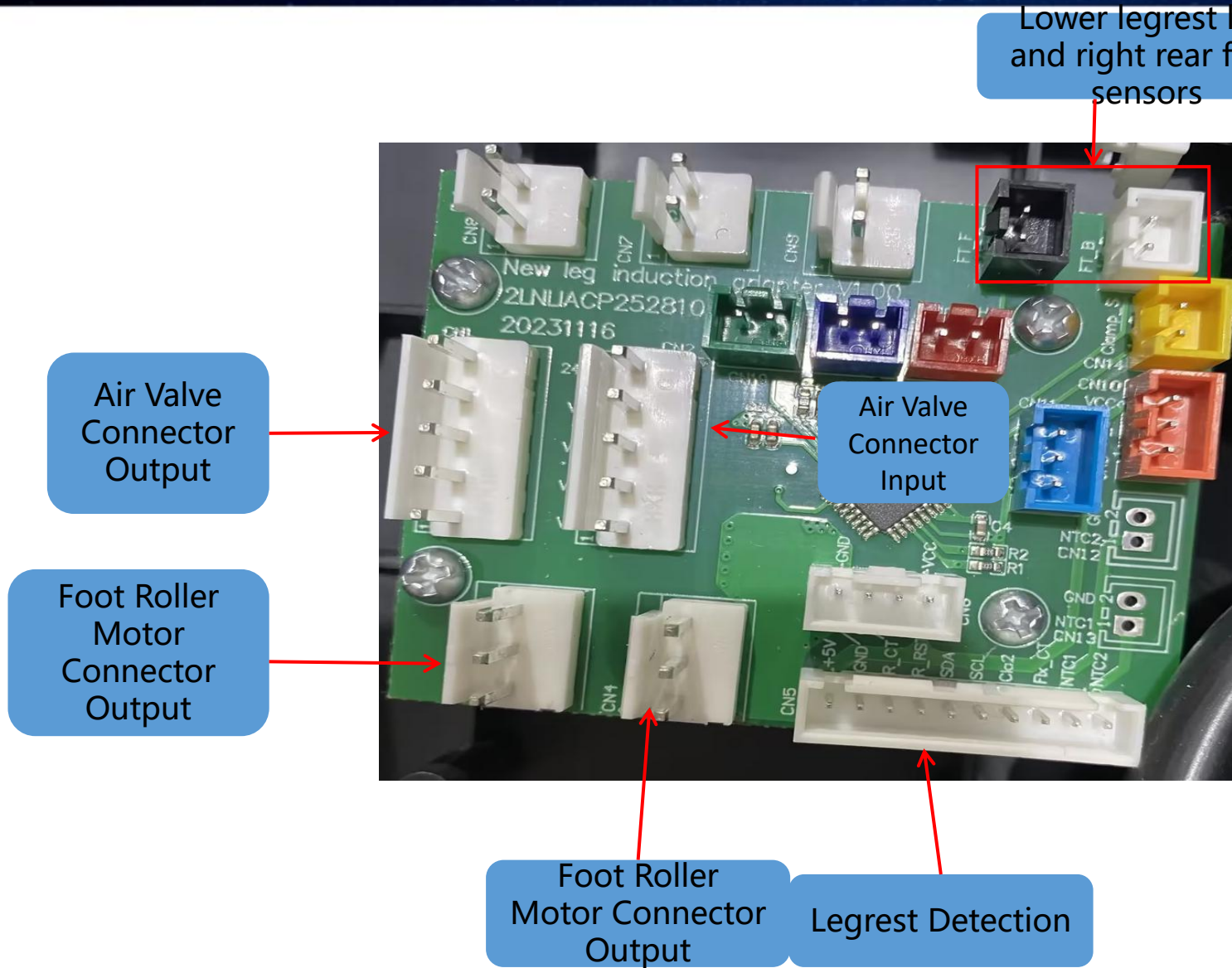
# Upper legrest Mainboard Connector Diagram



RT/E-SH001-2024

A/0

# Lower Legrest Transfer Board



RT/E-SH001-2024

A/0

# Upper&Lower Mechanism Width Board, 3D Limit Board 3D Counter Board, Upper&Lower Mechanism Distance Limit Board

Walking Counting Connector



Lower Mechanism Walking Counting Board

Kneading counting connector



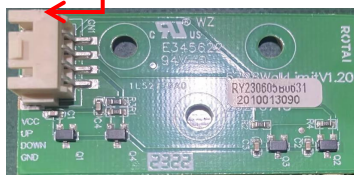
Lower Mechanism Kneading counting board

3D Limit Connector



3D Limit Board

Upper Mechanism Distance Limit Board Connector

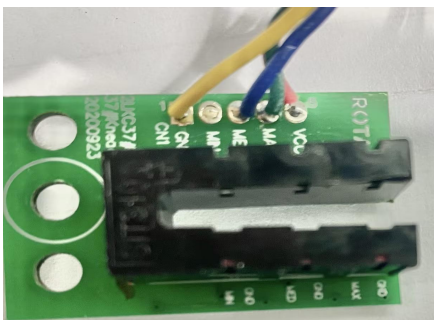


Upper Mechanism Distance Limit Board

Lower Mechanism Distance Limit Board Connector



Lower Mechanism Distance Limit Board



Upper Mechanism Width Board or optocoupler counting board

RT/E-SH001-2024

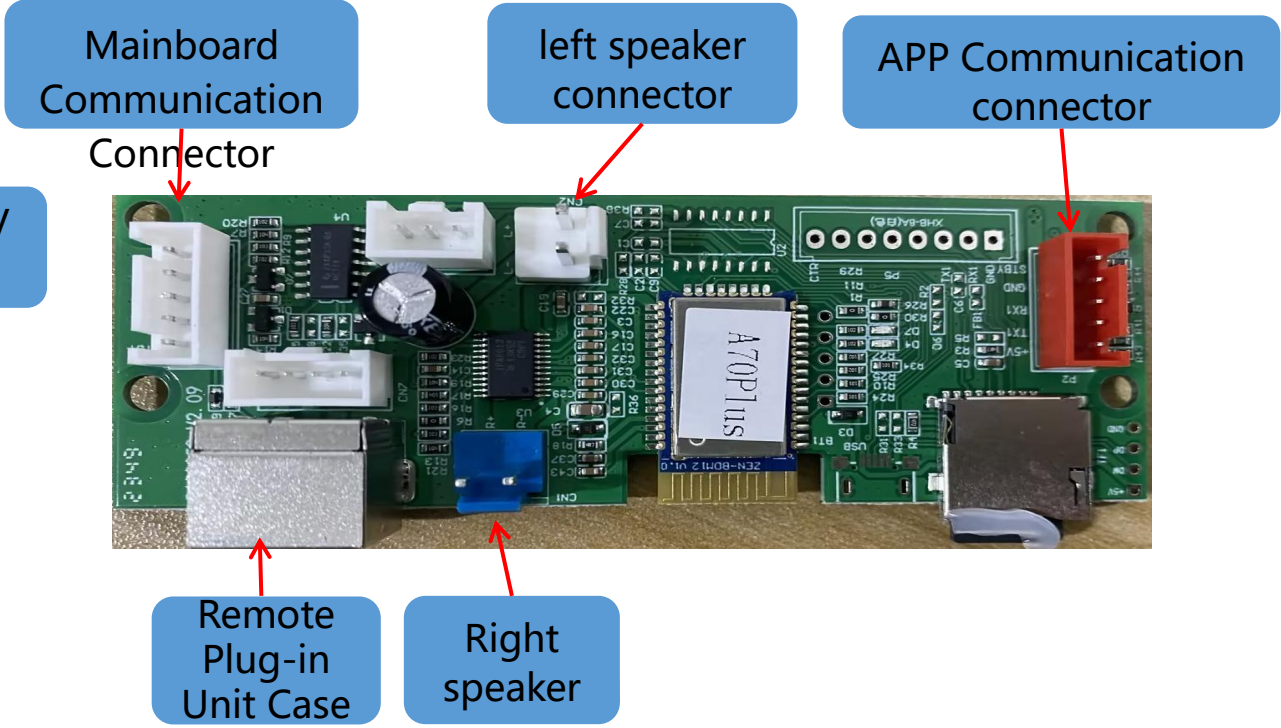
A/O

# 5V Power Board, User Connecting PCB Connector Diagram

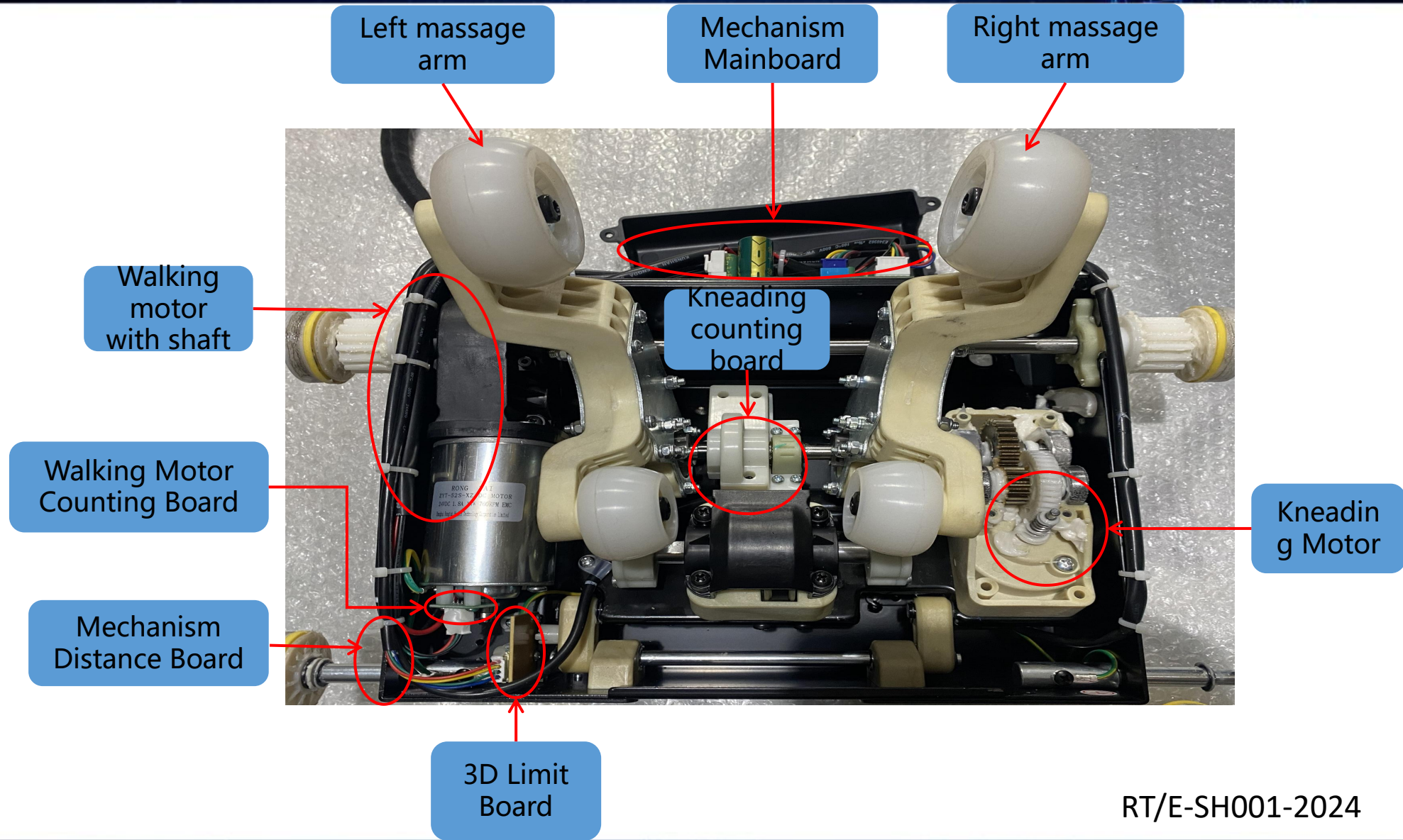


DC24V Output

AC220V Input



# Upper Mechanism Diagram

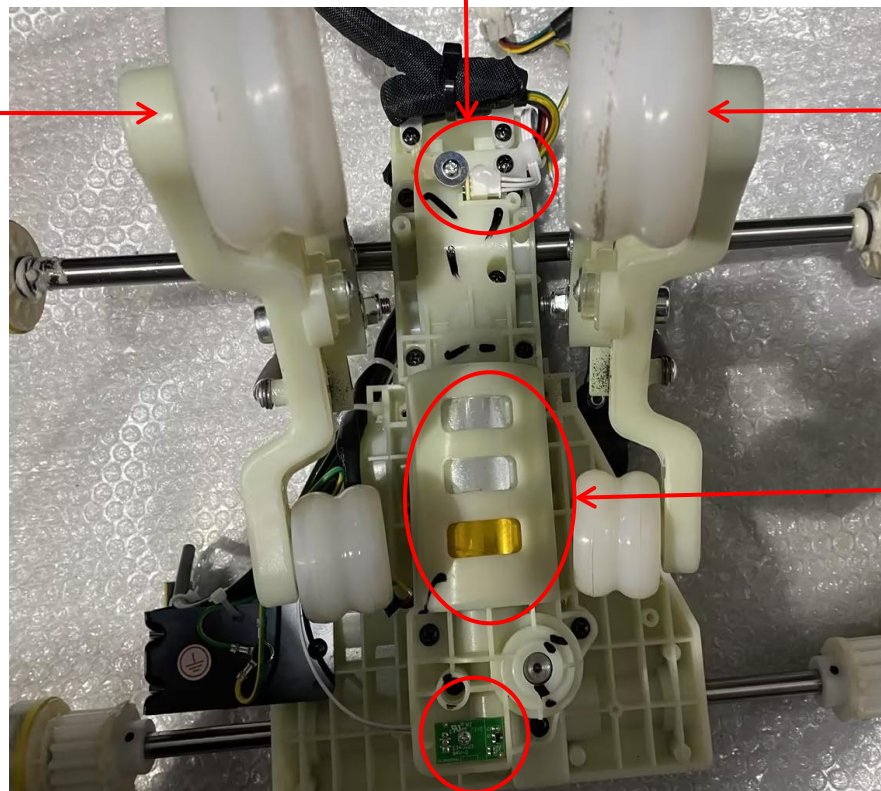


RT/E-SH001-2024

A/0

# Lower Mechanism Structure

Left  
massage  
arm



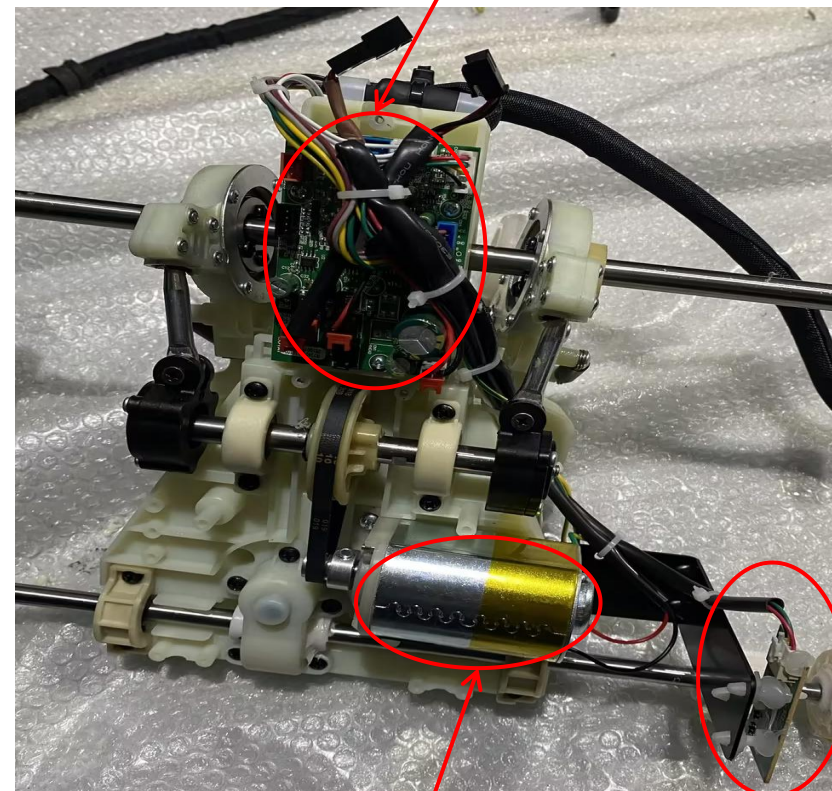
Kneading  
counting

Right  
massage  
arm

Kneading  
Walking  
Motor

Walking  
Counter

Mechanism  
mainboard



Distan  
ce  
Limit  
Board

Knocking  
Motor

RT/E-SH001-2024

A/0

1. The touchscreen cannot control the massage chair

2. Burnt fuse

3. Kneading motor not working

4. Mechanism cannot detect width

5. Tapping motor not working

6. Walking motor not working

7. Mechanism airbag not working

8. Legrest actuator not working

9. Backrest actuator not working

10. legrest extension not working

11. Foot roller not working

12. Airbags not working

13. Button pad not working

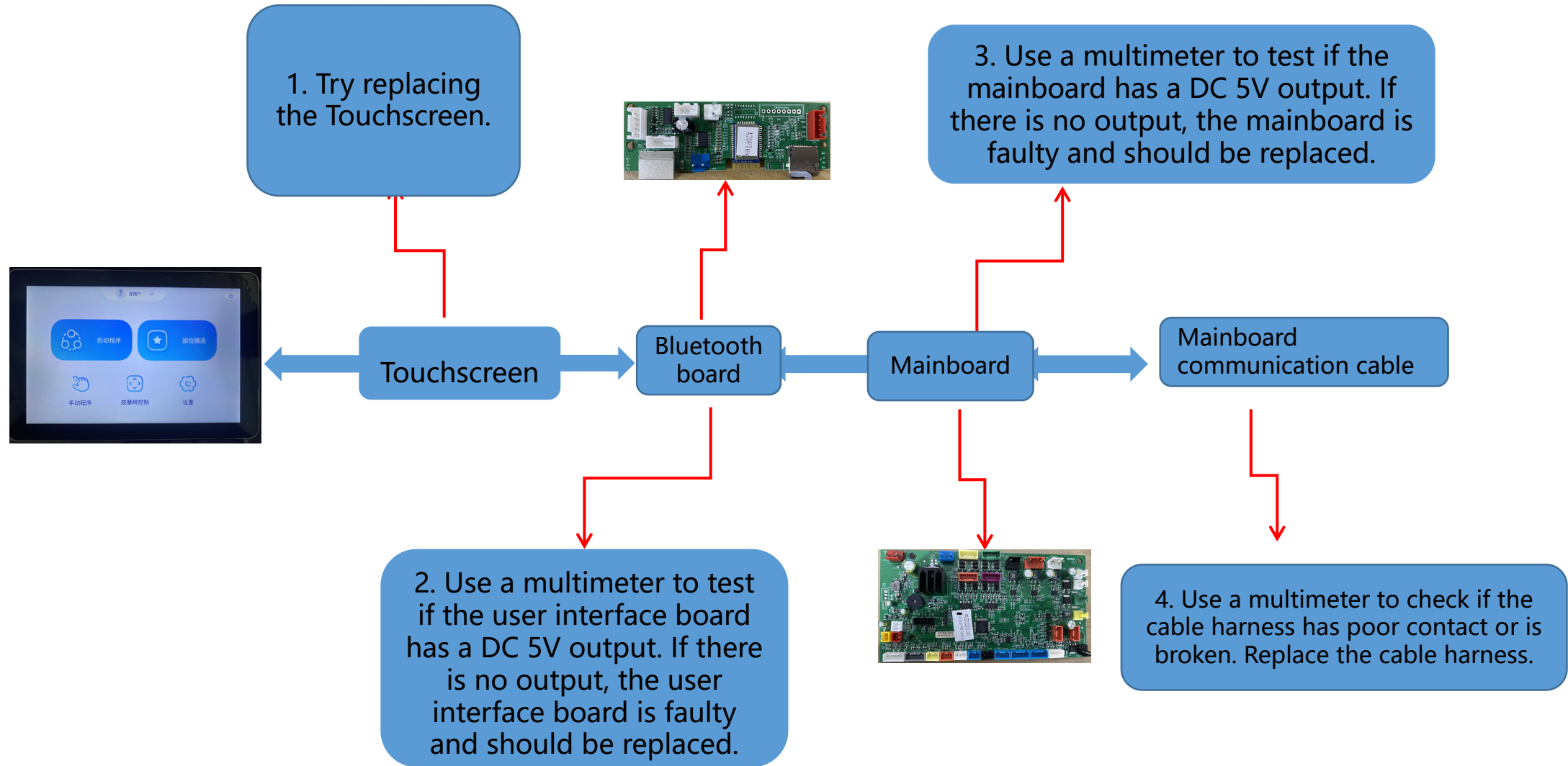
14. Wireless charger not working

15. Massage chair error alert

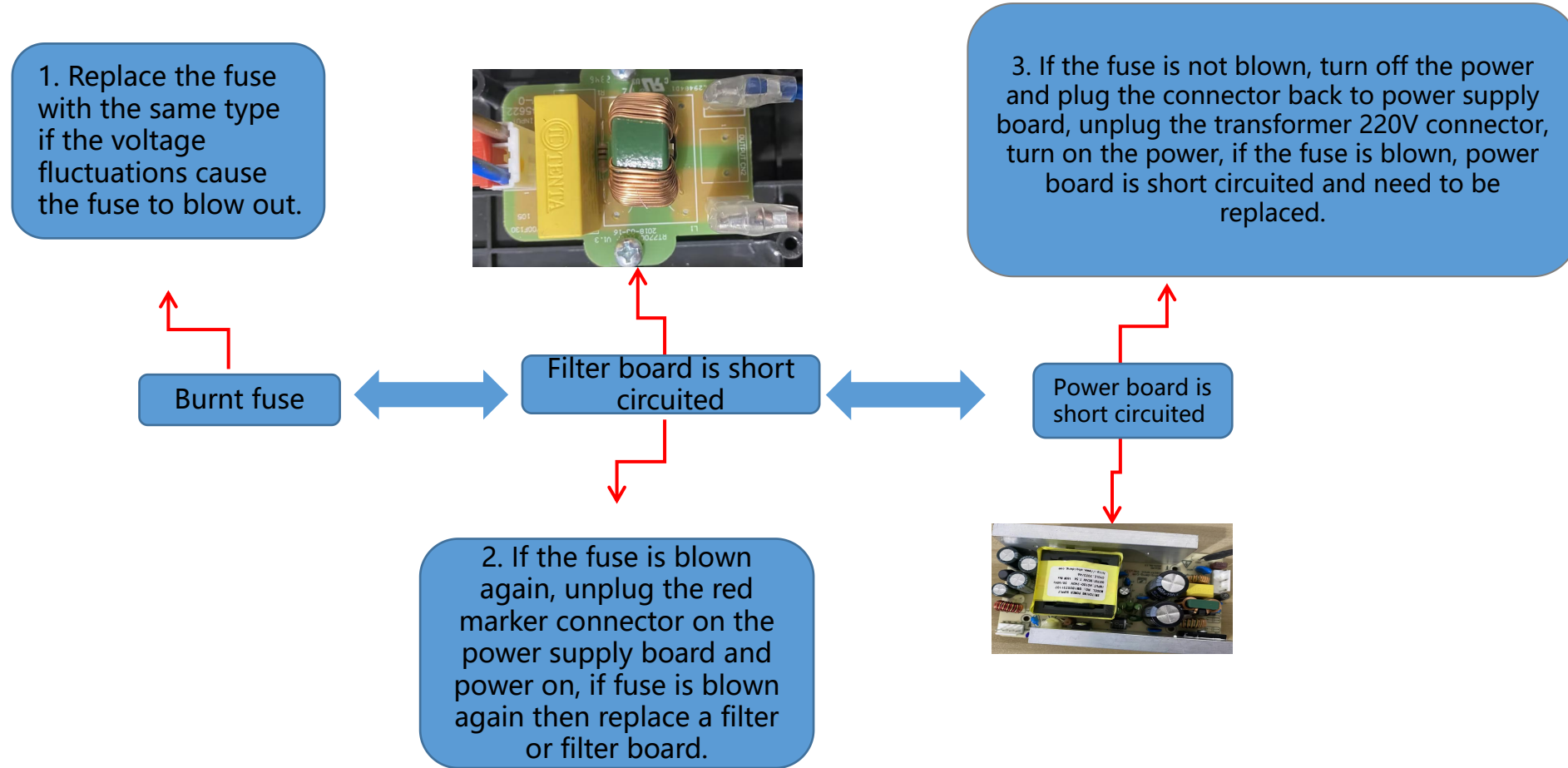
16. Body scan no results



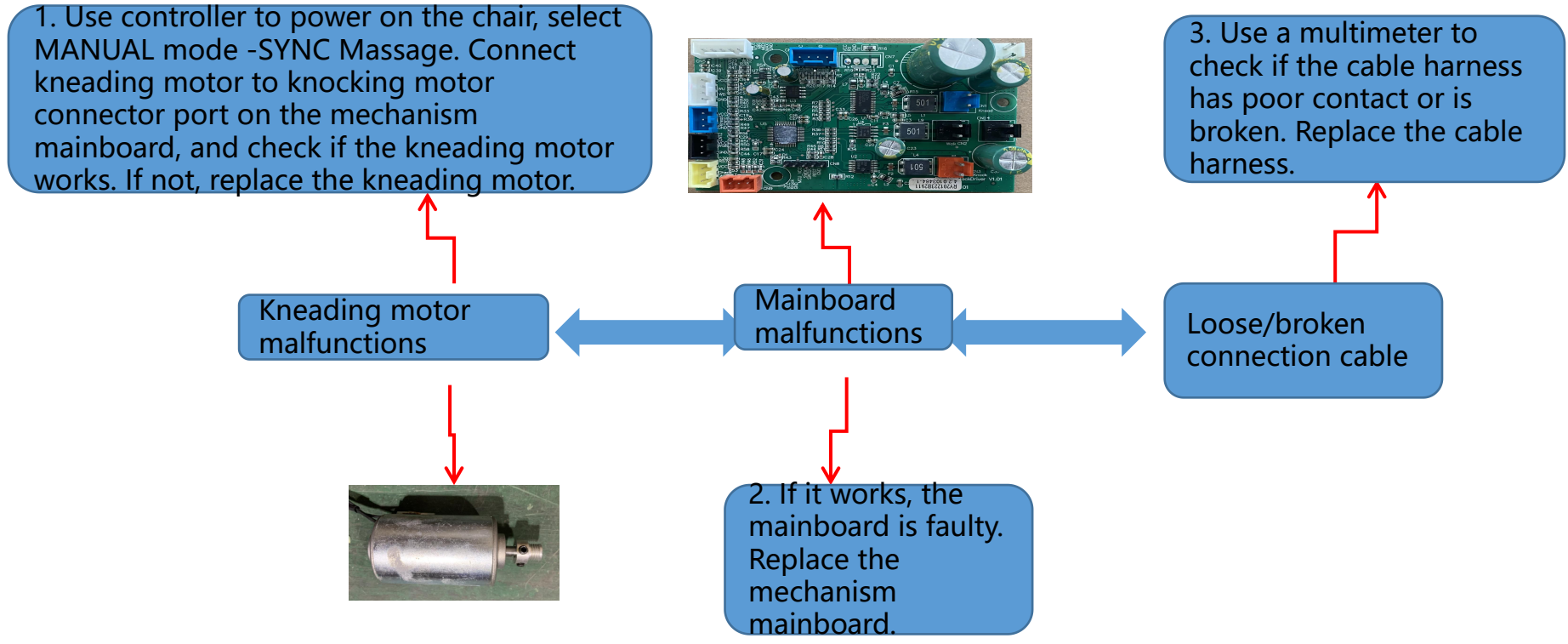
# 1. The touchscreen cannot control the massage chair



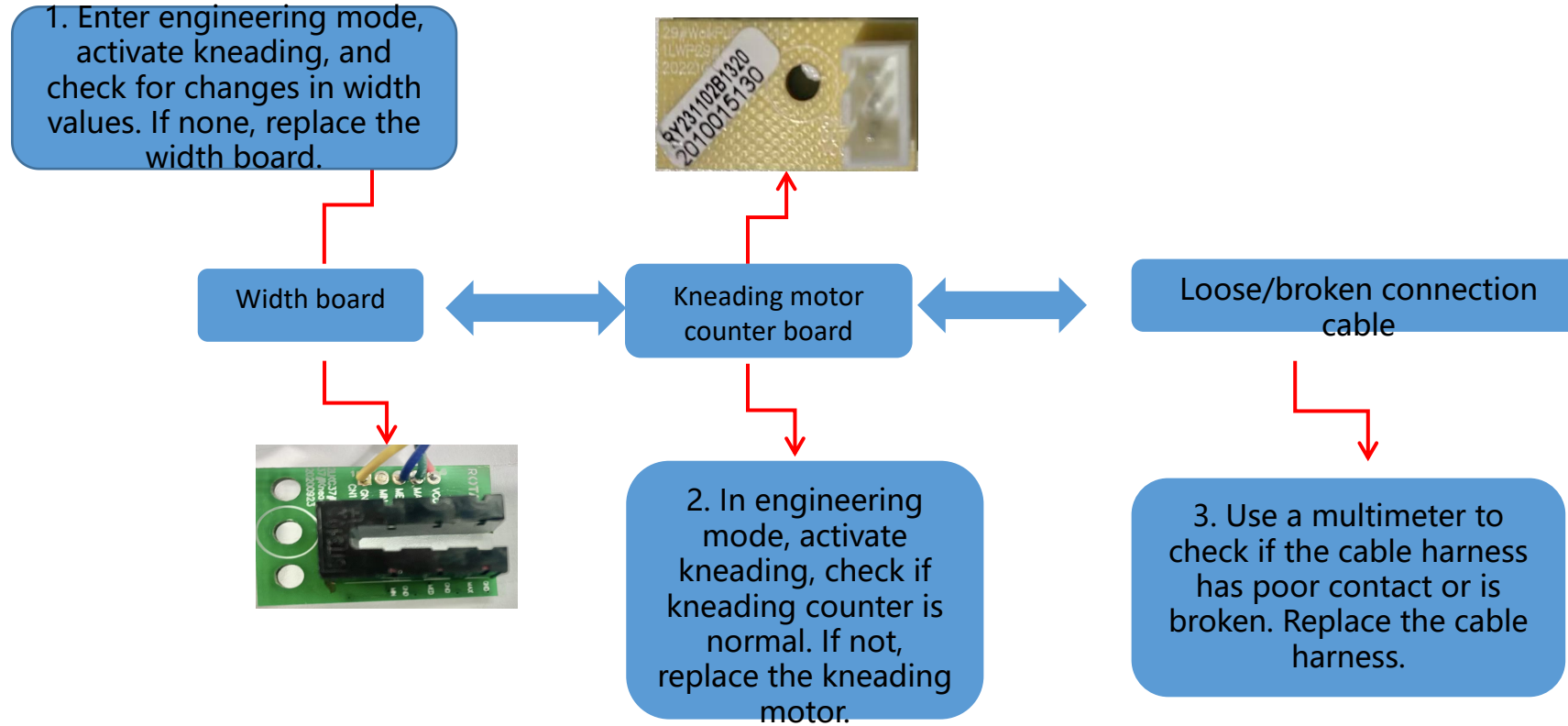
## 2. Burnt fuse



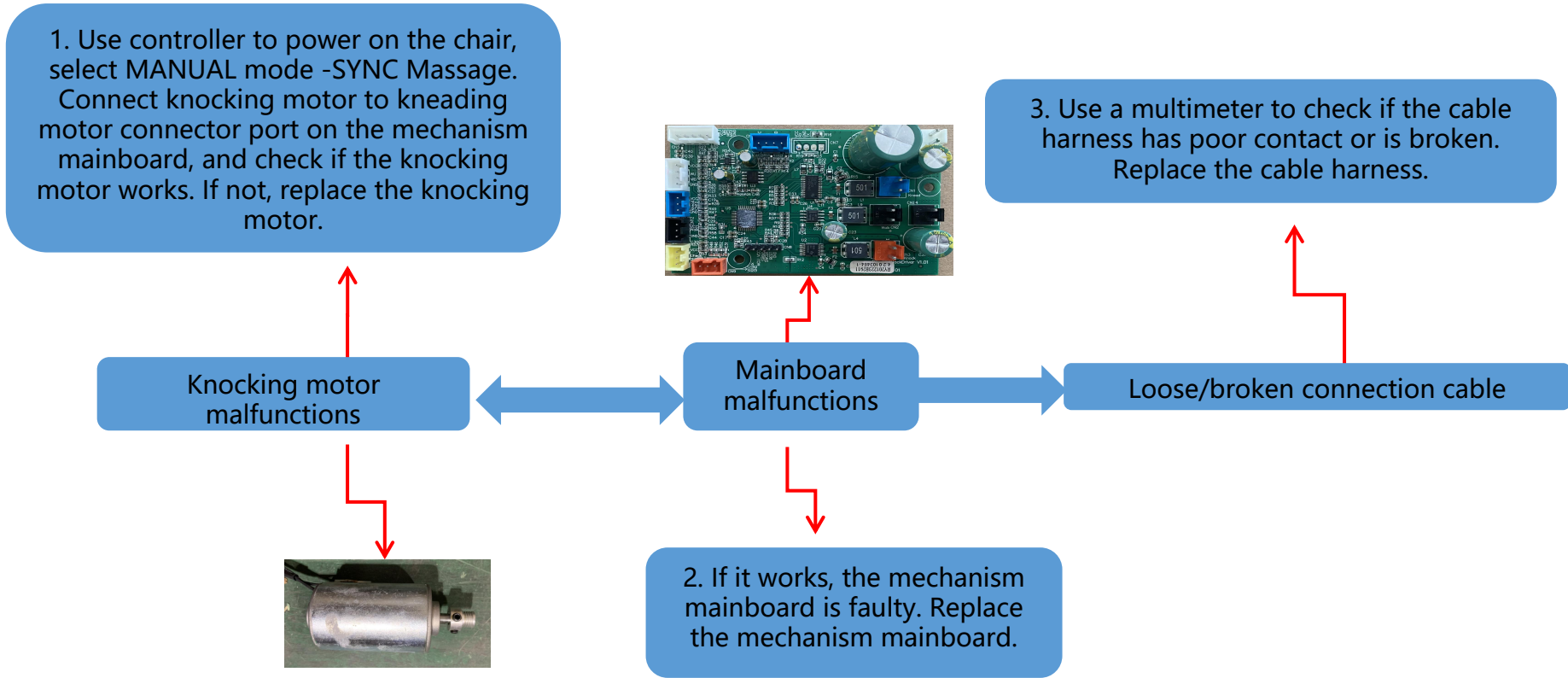
# 3. Kneading motor not working



# 4. Mechanism cannot detect width

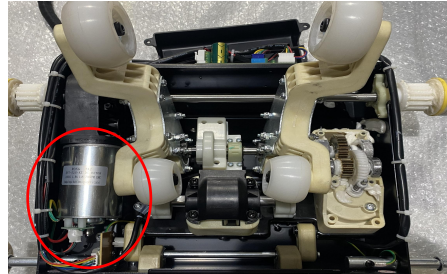


# 5. Knocking motor not working



# 6. Walking motor not working

1. Switch on the controller and power on the chair, select MANUAL mode-SYNC massage, then choose POINT massage, press the "UP" or "DOWN" button to check if there is no fast beep sounds from the controller, the upper distance limit board may be faulty (replace it) or the distance signal wiring harness may be broken or have a poor connection.



3. Plug the motor back to its original position, exchange walking motor connector and kneading motor connector to check if the walking motor functions. If motor moves then replace the mainboard, if motor fails to move, the motor cable is loose or broken, replace with a new cable.

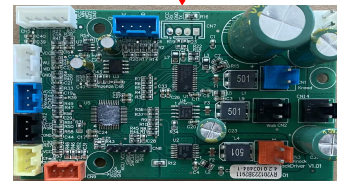
Distance limit sensor board is damaged



2. If both have slow single beeping sound, the limit sensor signal is good, then unplug mechanism walking motor connector (black color) and plug it into tapping motor connector socket (red color) to check if walking motor works. If no, the motor is damaged and needs to be replaced.

Walking motor malfunctions

Mainboard malfunctions



Loose/broken connection cable

4. Use a multimeter to check if the cable harness has poor contact or is broken. Replace the cable harness.

# 7. Mechanism airbag not working



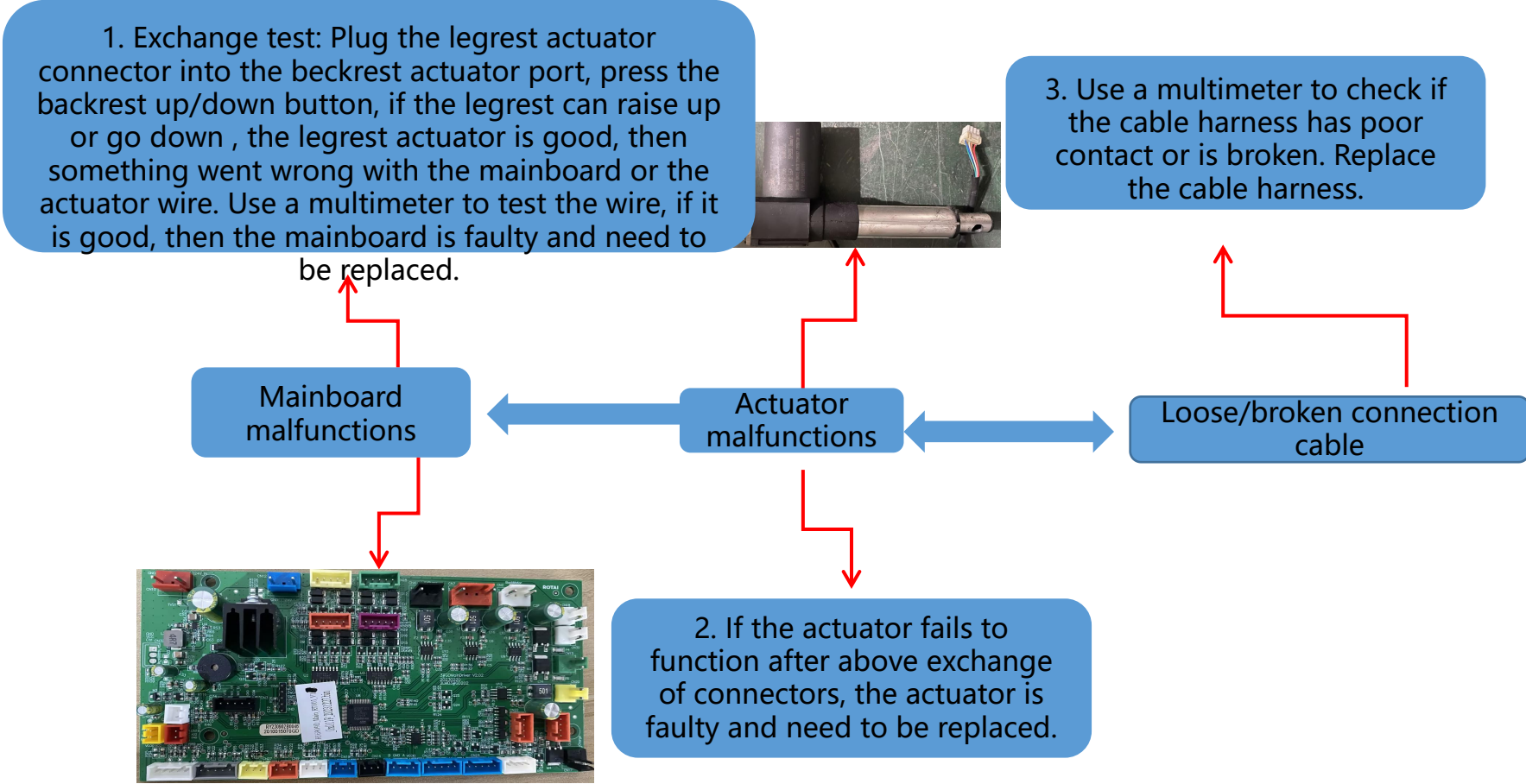
Mechanism air pump malfunctions

Mainboard malfunctions

1. Use a multimeter to measure the mainboard; if the mechanism's air pump connector has a DC 24V output, the mechanism's air pump is faulty and should be replaced.

2. Use a multimeter to measure the mainboard; if the mechanism's air pump connector has no DC 24V output, the mainboard is faulty and should be replaced.

# 8. Legrest actuator not working





# 9. Backrest actuator not working

1. Exchange test: Plug the backrest actuator connector into the legrest actuator port, press the legrest up/down button, if the backrest can raise or recline, the backrest actuator is good, then something went wrong with the mainboard or the actuator wire. Use a multimeter to test the wire, if it is good, then the mainboard is faulty and need to be replaced.



3. Use a multimeter to check if the cable harness has poor contact or is broken. Replace the cable harness.

Mainboard malfunctions

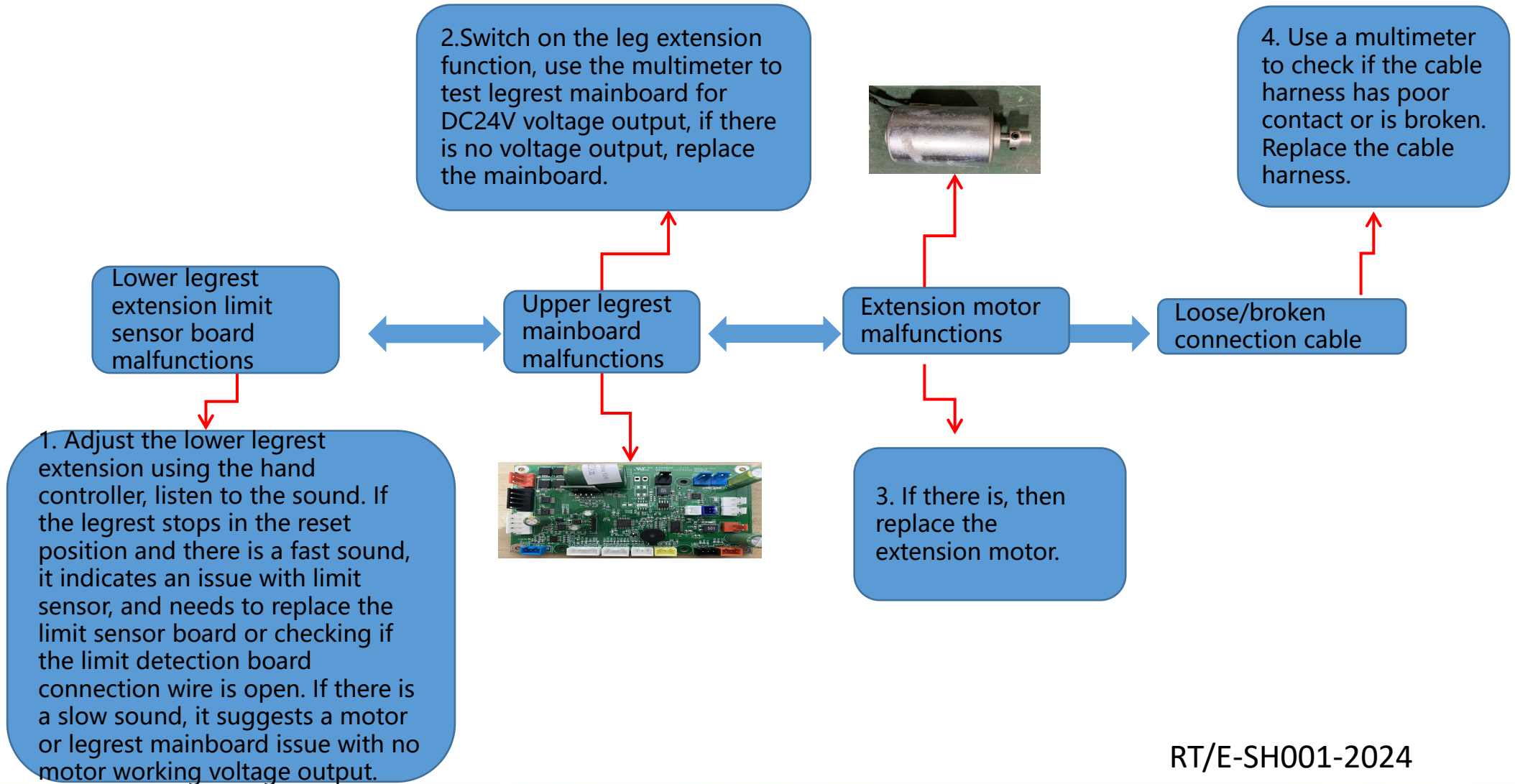
Actuator malfunctions

Loose/broken connection cable

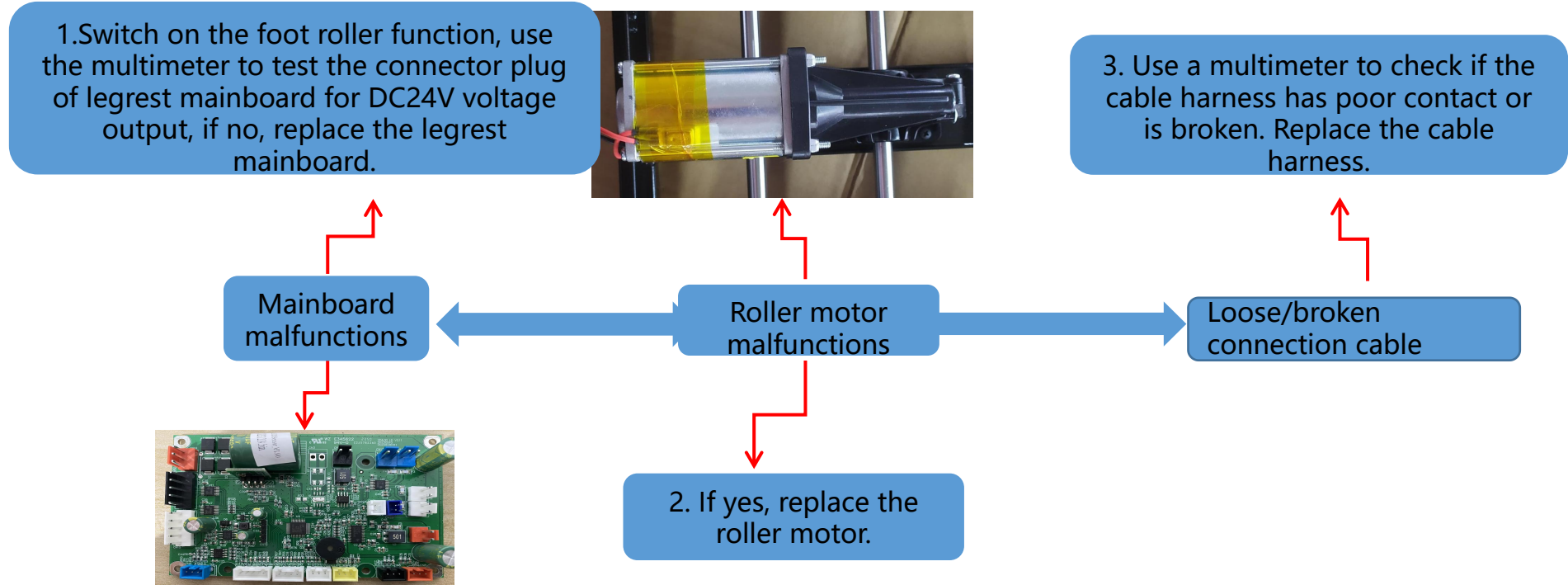


2. If the actuator fails to function after above exchange of connectors, the actuator is faulty and need to be replaced.

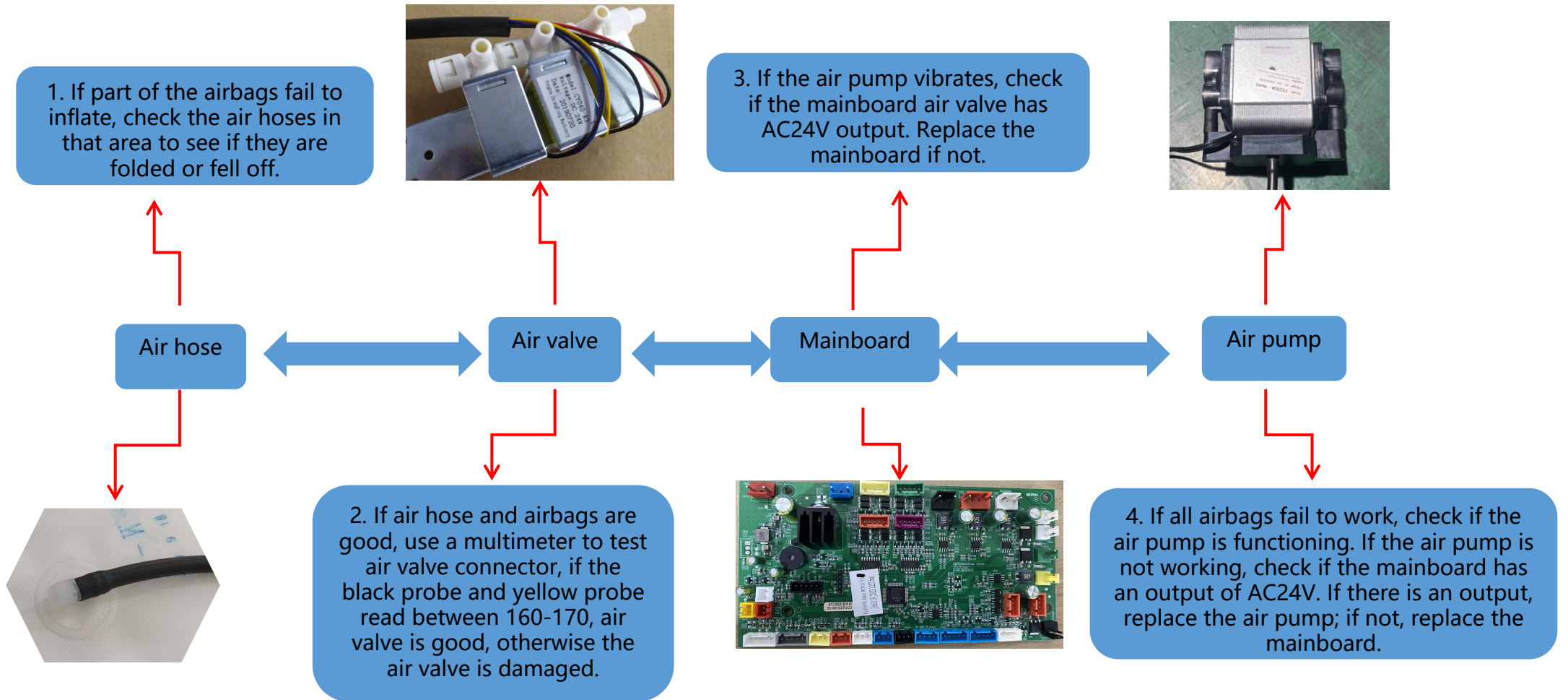
# 10. Legrest extension motor not working



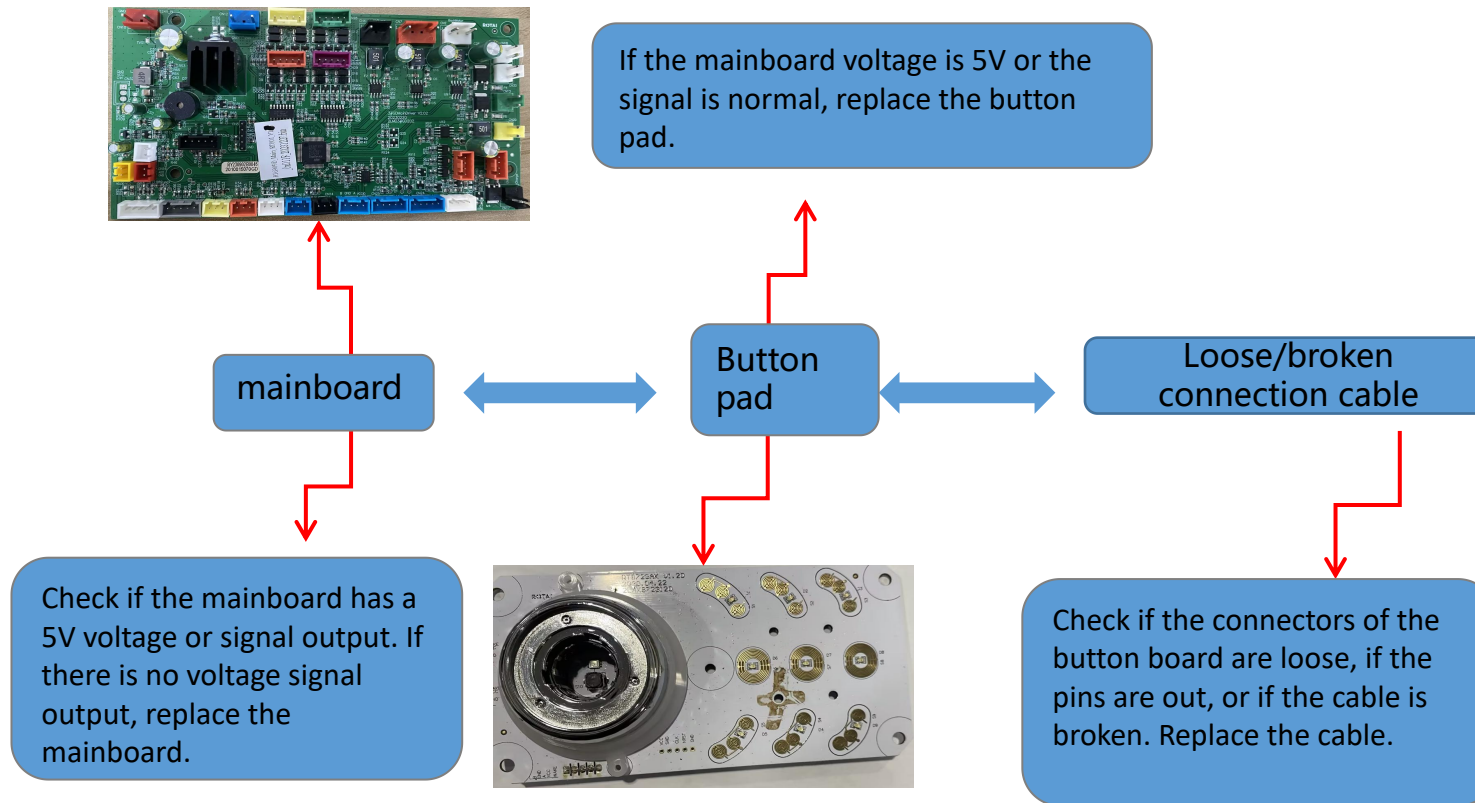
# 11. Foot roller motor does not work



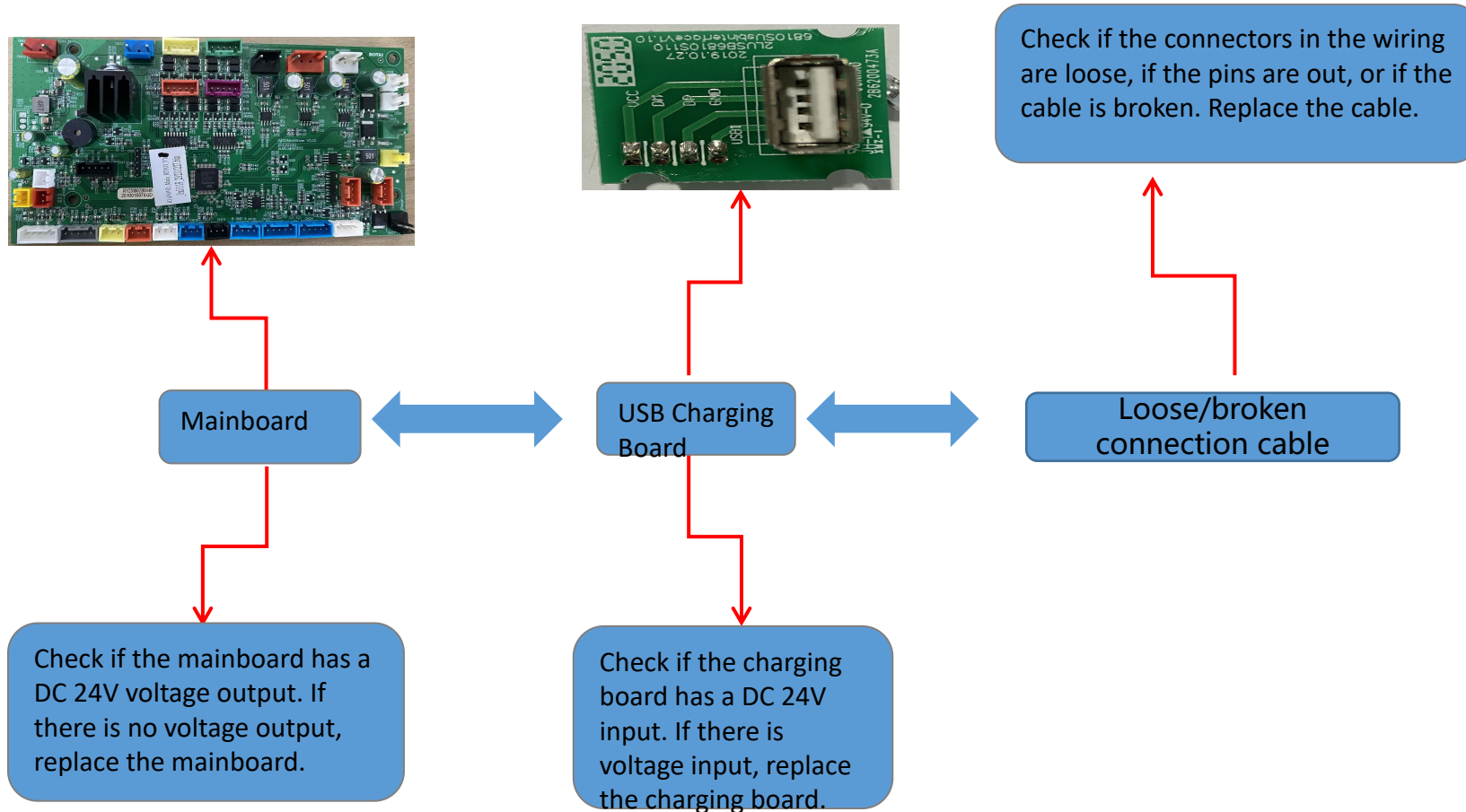
# 12. Airbags not working



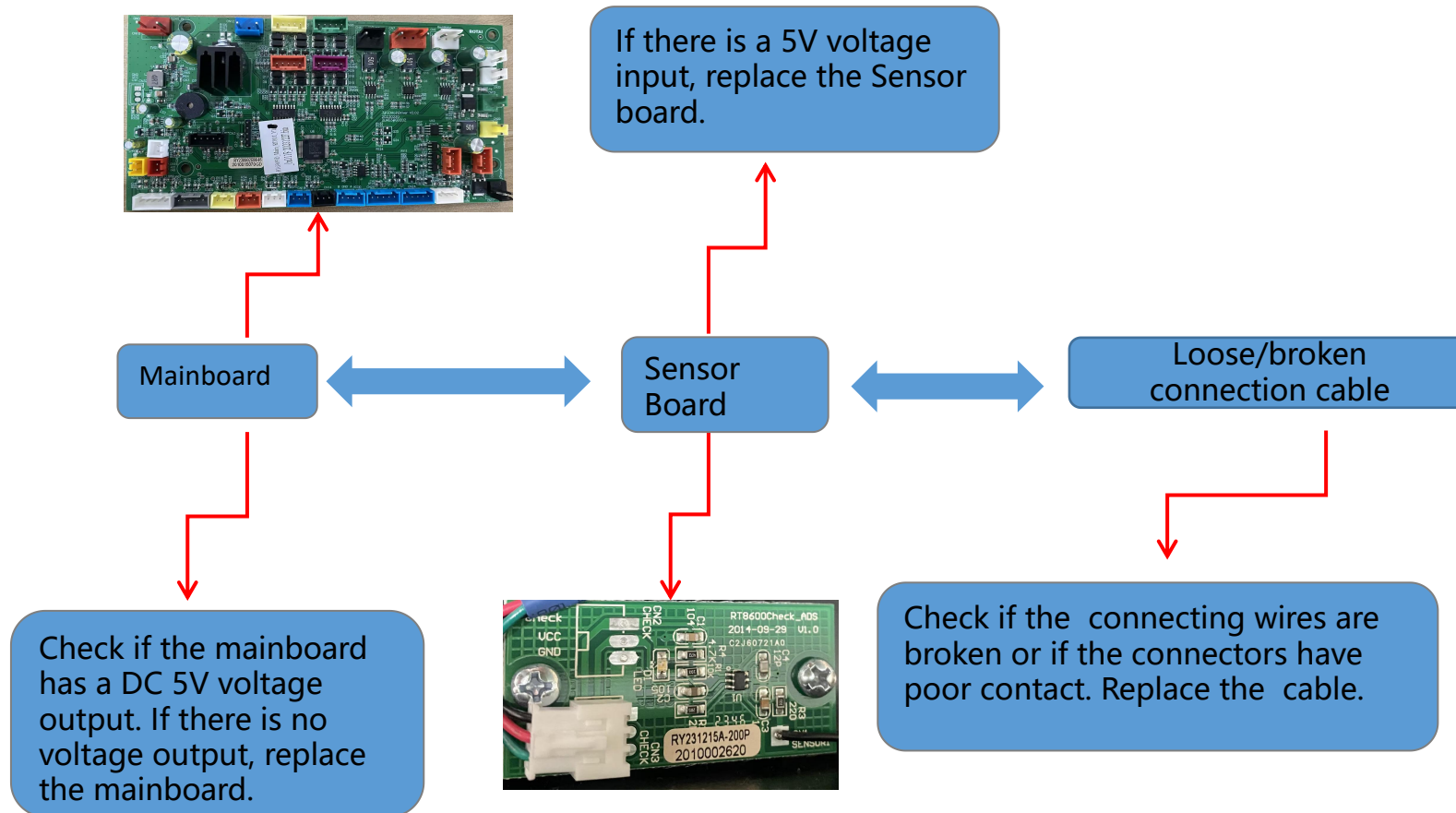
# 13. Button pad not working



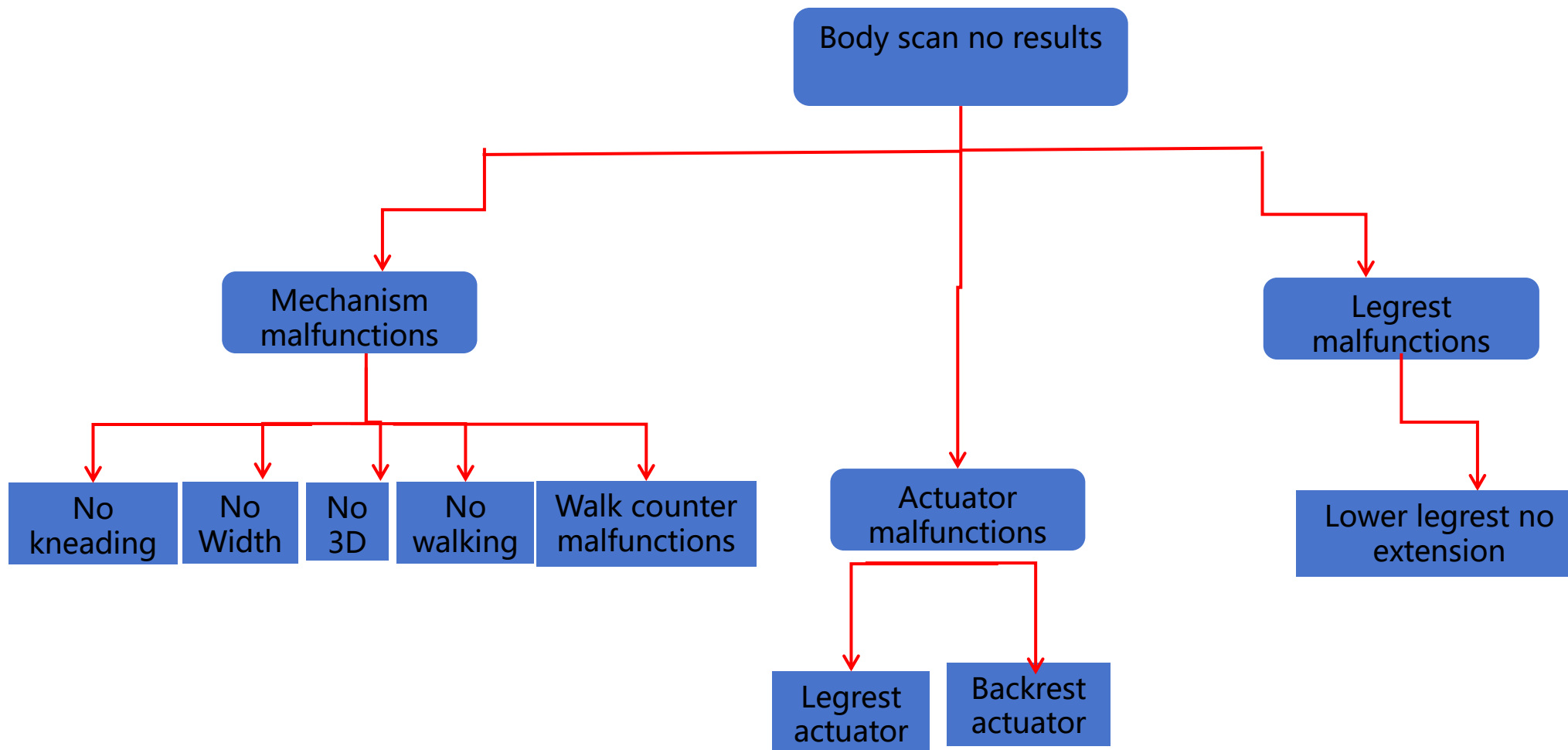
# 14.USB charger not working



# 15. Massage chair error alert



# 16. Body scan no results





**ROTAI**  
荣泰



**ROTAI**  
**More Professional Massage Chairs**