



蒙发利

EASEPAL

中国·厦门蒙发利科技有限公司

Xiamen Comfort Science & Technology Co.,Ltd

# 产品维修手册

## Maintenance Service Manual

产品型号/MODEL: 2206B

适用电压规格/ voltage specification: 110-120V

蒙发利集团·客服

By the Easepal's Customer Service Dept.

### 一、产品故障列表 Trouble List

如下为常见的故障现象及维修方法。

Common Troubles and Maintenance Methods are listed as below:

故障序号NO	现象 phenomenon	描述 Description	维修方法 maintenance method
01	开机无功能 No function	A. 控制器无反应 ①、保险丝烧掉 Fuse melts (电源盒处和中心板上 (in the Power Source Box and main PCB) ②、电源电路接触不良。 Power	①、更换保险丝 Replace Fuse ②、更换电源盒 Replace Power Box ③、更换电源板

		<p>supply circuit Poorly connected ③、电源板坏 POWER PCB Failed ④、中心板坏 Main PCB failed</p>	<p>Replace POWER PCB ④、更换中心板 Replace main PCB</p>
		<p>B. 控制器有反应： ①、上下行程光电坏。 Up or Down Stroke Photoelectricity was failed ②、中心板坏掉 Main PCB failed ③、开机直揉捏其他按键无效 kneading all the time from powerand no response with other button</p>	<p>①、更换行程光电 Replace stroke photoelecruicity ②、更换中心板 Replace main PCB ③、宽度检测板坏， 更换宽度检测板 Replace Width Inspection Board</p>
02	<p>宽中窄不能切换 the Width switchover isn`t change</p>	<p>①、中心板宽度检测端子线材接触不良。The terminals of Width Inspection on main PCB with wires were poorly connected ②、机芯宽度检测板端子线材接触不良。The terminals of Width Inspection on mechanical with wires were poorly connected ③、宽度检测板坏。 Width Inspection failed ④、中心板坏Main PCB failed</p>	<p>①、②点将端子接插到位或是更换线材Plug the terminals well or replace the wires ③、更换宽度检测板 Replace Width Inspection ④、更换中心板 Replace the main PCB</p>

03	不行走 NO Rolling	端子或是线材接触不良 Terminals or Wire Poorly Contact ②、上、下行程光电组件坏。 UP/ Down-stroke Photoelectricity Subassembly Failed ③、行走电机坏 Rolling Motor Failed ④、中心板坏 Main PCB failed	①、将端子接插到位或是更换线材。 Plug the terminal well or replace the wires 更换上、下行程组件 Replace UP/Down-Stroke Subassembly ③、更换机芯。 Replace gear box ④、更换中心板 Replace main PCB
04	不揉捏 No kneading	①、中心板端子没插到位或是线材接触不良。The terminals on main PCB and wires are poorly connected 、揉捏电机坏 Kneading motor failed ③、中心板坏Main PCB failed	①、将端子接插到位或是更换线材。 Plug the terminal well or replace the wires ②、更换机芯 Replace gear box ③、更换中心板。 Replace main PCB
05	不敲击 No tapping	①、中心板端子没插到位 The terminals on main PCB and wires are poorly connected ②、敲击电机坏 Tapping motor failed ③、中心板坏掉Main PCB failed	①、将端子接插到位 Plug the terminal well ②、更换机芯 Replace gear box ③、更换中心板R Replace main PCB
06	不升倒背 backrest can't recline or lift	①、电动推杆连接线未接插到位 The terminal of electrically operated pusher and wires are poorly connected ②、电动推杆坏 The electrically operated pusher failed ③、中心板坏 Main PCB failed	①、将连接线接插到位 Plug the terminal well ②、更换电动推杆 Replace the electrically operated pusher ③、更换中心板 Replace main PCB

## 二. 故障检修流程图 Troubleshooting Process

在修理或者替换零配件过程中注意以下几点：

在拆卸连线，移动连接器，或者替换部件前一定要断开电源线插头。

因为半导体（像集成电路，或者其它的）很容易被静电损坏，所以当要触摸PCB前，请确保你的身体和大地有连线（佩带静电手环），或可以将手放在地端，以释放身体上所带的静电。

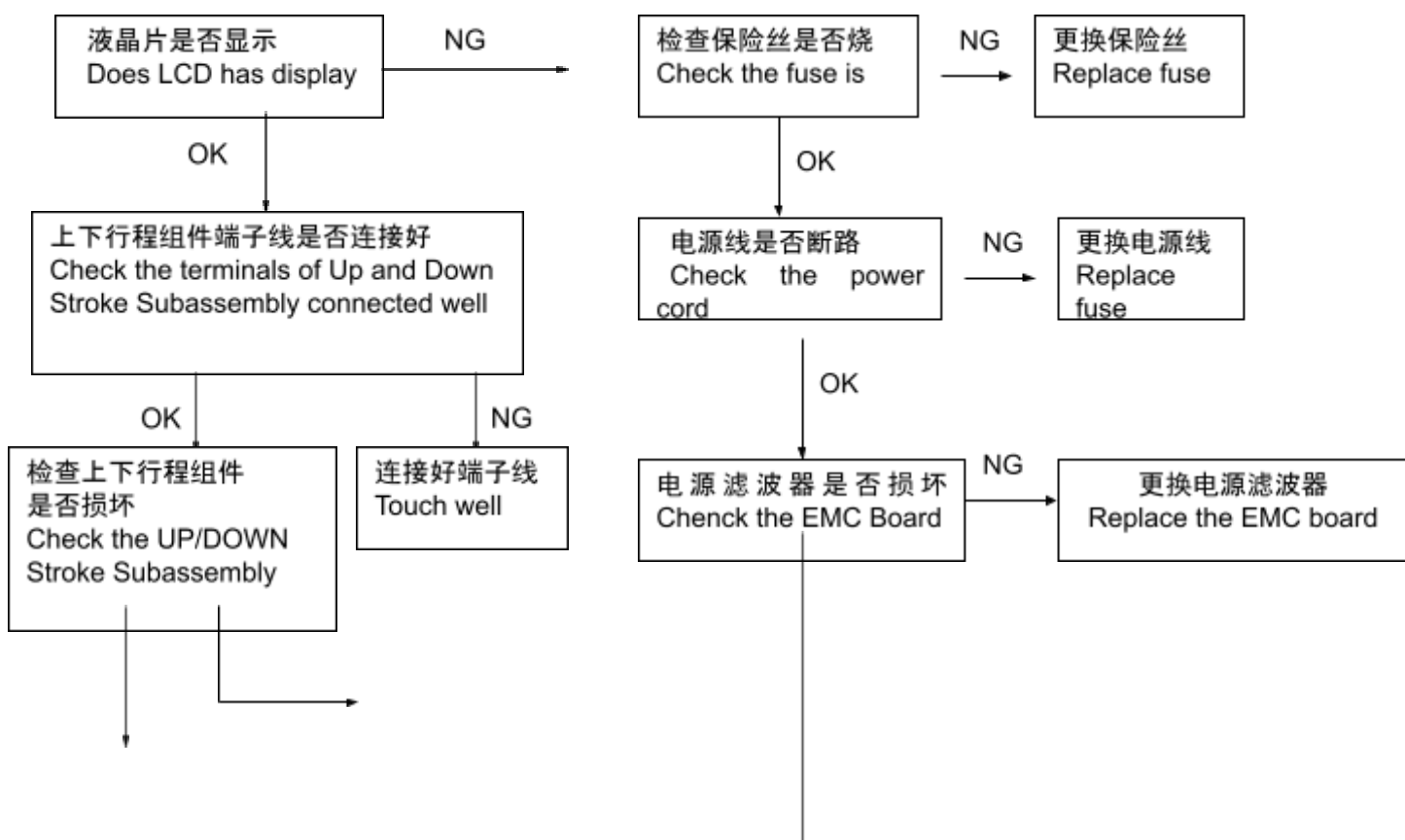
Notes for repairing chair or replacing parts

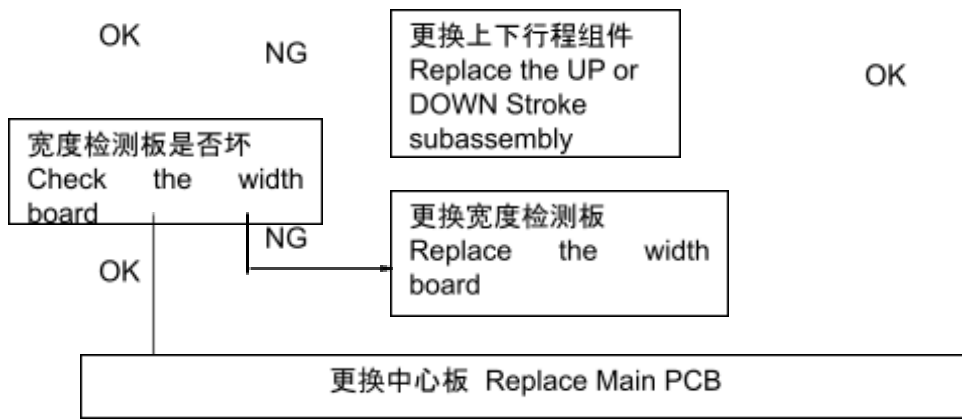
A. Make sure the power is off when you tear down the wires, move terminals or replacing parts.

B. The semiconductors (like IC or something else) will easily be damaged by static.

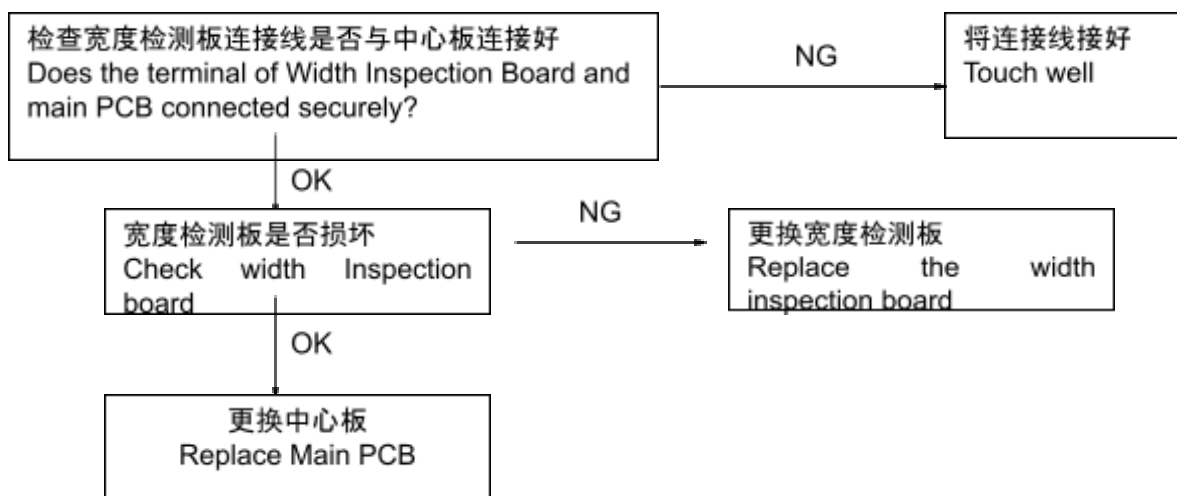
So you touch the PCB before, please make sure your body is connected with the ground.

### 1、开机无功能/ No function

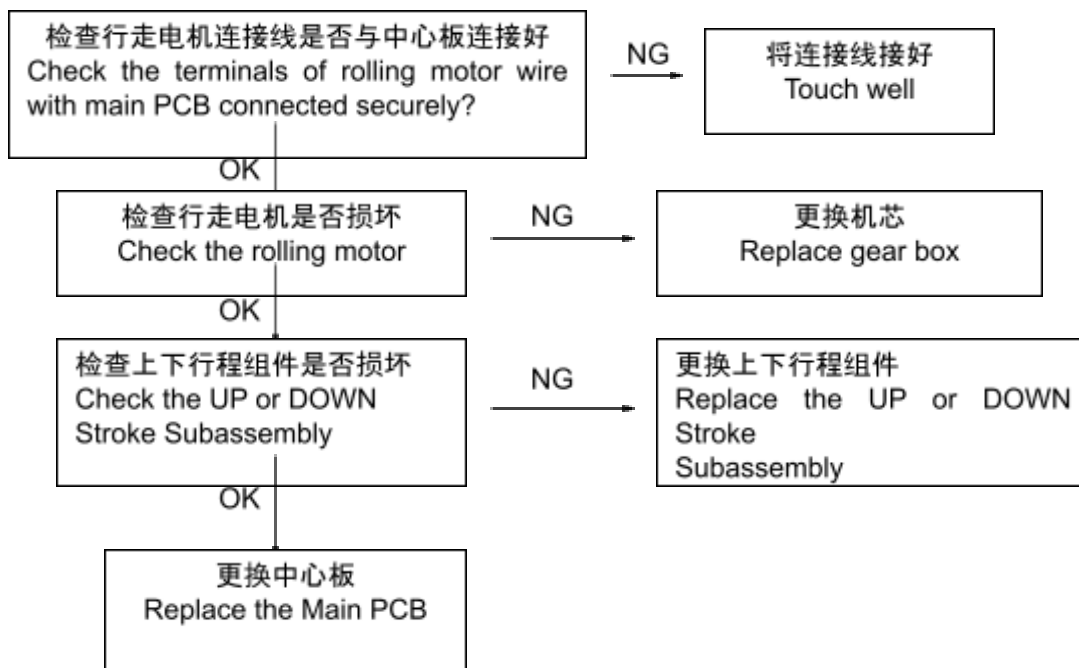




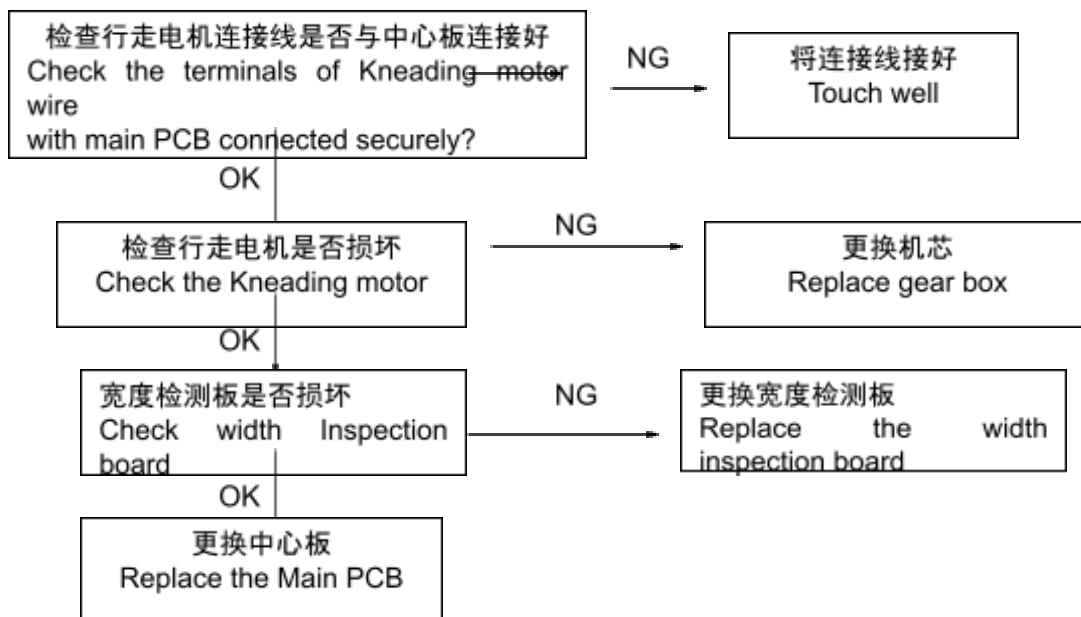
## 2、机芯宽中窄不能切换 No width switchover



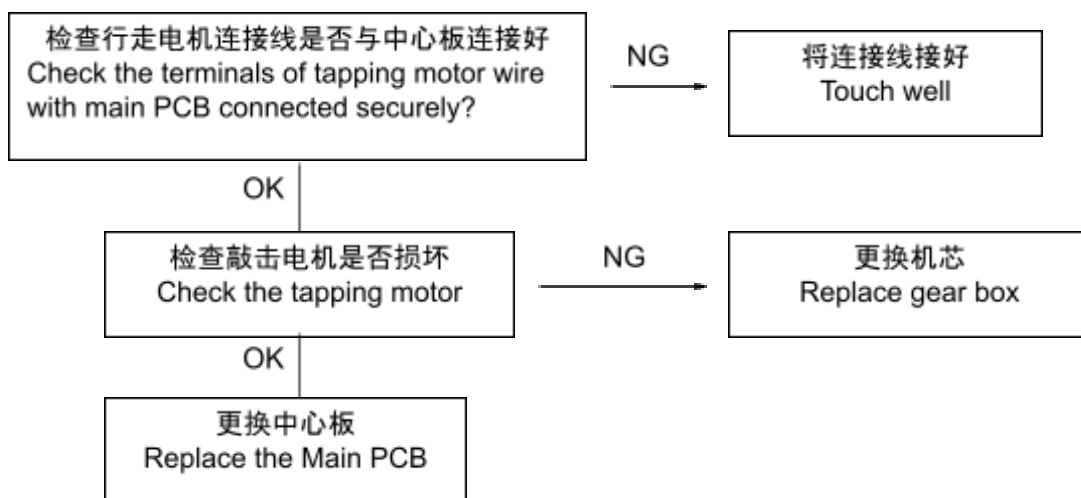
## 3、不行走/ NO ROLLING



#### 4、不揉捏/ NO KNEADING

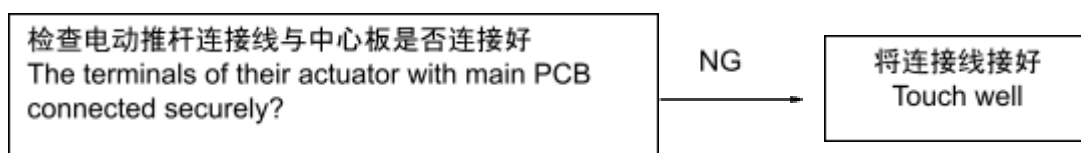


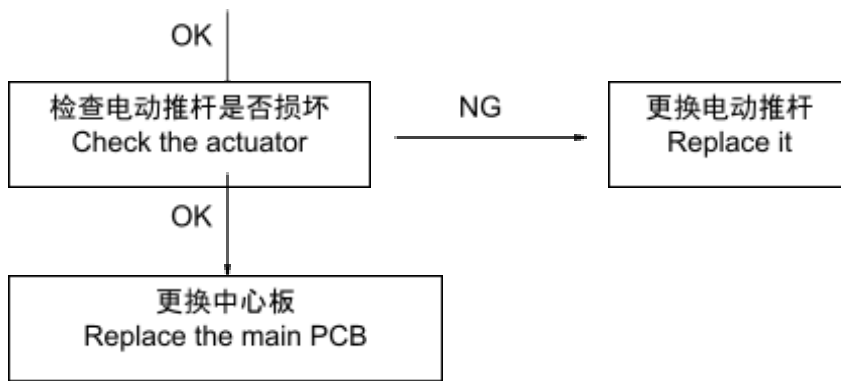
#### 5、不敲击/ NO TAPPING











#### 6、电动推杆(靠背/小腿/零重力)不工作





**Actuator doesn't work.(Backrest and leg rest)**





## 工具列表 Tools List

			
<p>十字螺丝刀Screwdriver size 1,2,3</p>	<p>老虎钳 尖嘴钳Diagonal cutter and long nose pliers</p>	<p>电烙铁Soldering Kit</p>	<p>扳手Spanner tools Kit</p>
			
<p>电笔 Test pen</p>	<p>六角扳手 Allen Key set</p>	<p>内六角扳手 Ratchet Tools Set</p>	<p>24V/DC电源 24V/DC power</p>

			
电动螺丝刀Electric Driver	电工胶electrical adhesive tape	扎扣Cable Ties	压线帽 WIRE ONECTORS

## 目录 Table of Contents

1. 中心盒内部的拆解 <b>disassembly of the main PCB BOX</b>	9
2. 靠背后盖的拆卸 <b>disassembly of the rear cover</b> .....	10
3. 披风枕头的拆卸 <b>Disassembly of the backrest pad and pillow</b>	10
4. 左右外侧板的拆卸 <b>disassembly of the side board</b> .....	12
5. 机芯的拆卸 <b>disassembly of gear box</b>	14
6. 平推杆的拆卸 <b>disassembly of the actuator</b> .....	15

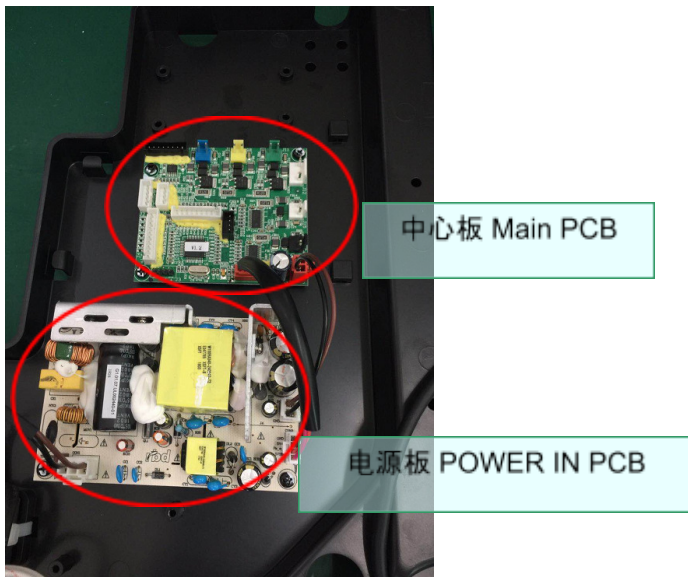
### 1. 中心盒内部的拆解 **disassembly of the main PCB BOX**

A. 取下固定中心盒上盖的2枚螺丝, 就可移开中心盒上盖

Slack and remove 2 screws fixing the cover, remove the cover

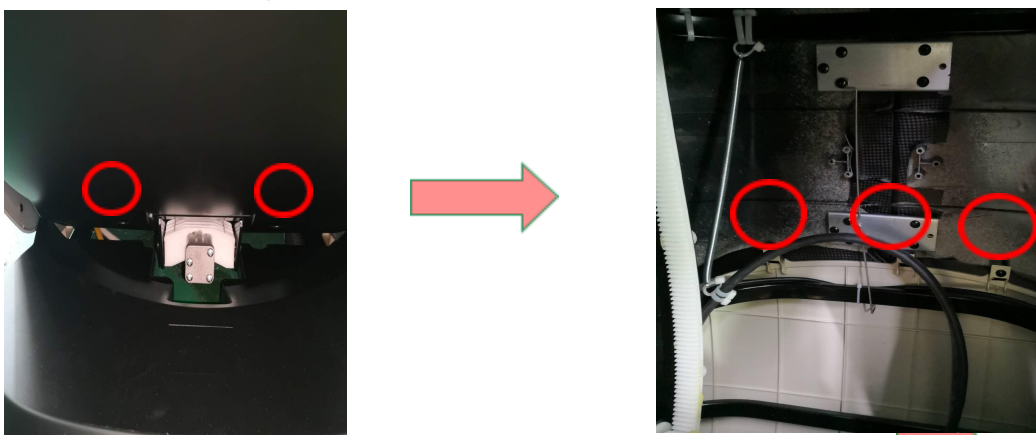


B. 在这个平台上,你可以根据需要进行更换...  
具体的部件可以在上图找到,只需取下螺丝等即可拆离。  
You can replace the which part that the part was broken on the board;  
Please refer the picture above, then remove the fixing thing just



## 2.靠背后盖的拆卸 **disassembly of the rear cover**

取下固定靠背后盖的5枚螺丝, 取下靠背后盖  
Remove 2 screws fixing the rear cover, then take it down



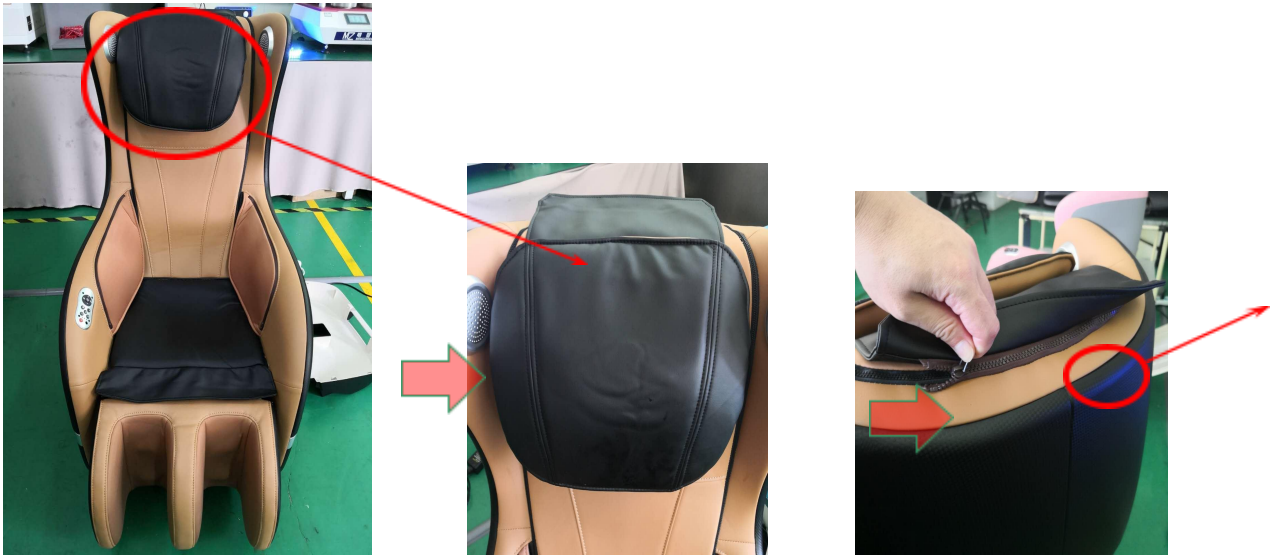
移除固定后盖的2枚螺丝remove 2 screws

取掉这3枚螺丝,可取下靠背后盖

### 3. 披风枕头的拆卸 Disassembly of the backrest pad and pillow

A. 拉开链,可以取下枕头

Locate the Head Pad Assy at the top, front of the chair as shown in picture below



拉开拉链,取下小枕头  
Open the zipper, take down the pillow

B. 分别拉开披风两侧拉链,取下披风 Unzip the cloak,remove the cloak



拉开背部拉链 Open the zipper for back pad

NEXT:





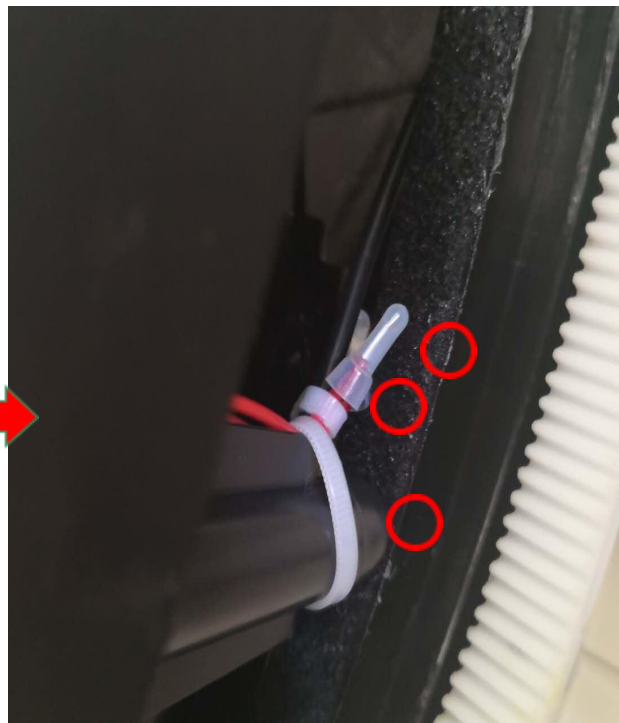
拉开小腿皮套与披风的连接拉链, 松开取下小腿组件与机身的连接轴螺母, 可以拆除小腿按摩组件

#### 4.左右外侧板的拆卸 disassembly of side panel ( Left or right)



再松除图中标示处的螺丝, 左右侧板即可拆掉

拆除左右肩部加热片, 如图示, 剪掉扎带, 松开连接端子。



撕掉操作面板上的贴面, 会露出中4个螺丝, 松掉螺丝, 便可更换手控板。

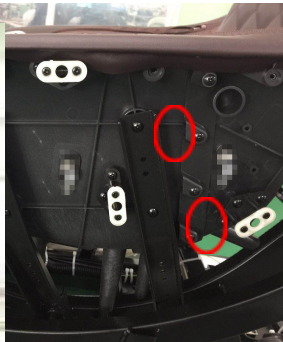


### 5.机芯的拆卸 **disassembly of the gear box**

A.先移除左右侧板(见No.2&3),再移除前靠背组件,方可进行拆卸机芯工作



移除前靠背后部的6枚螺丝  
Remove the 6 screws



移除前靠背右面的5枚螺丝, 其中1枚在底部  
Remove the 5 screws, one screw under the bottom



移除前靠背右面的5枚螺丝, 其中1枚在底部  
Remove the 5 screws, one screw under the bottom

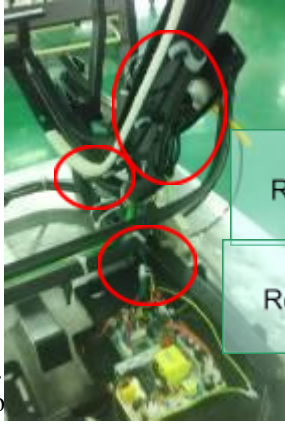
NEXT:



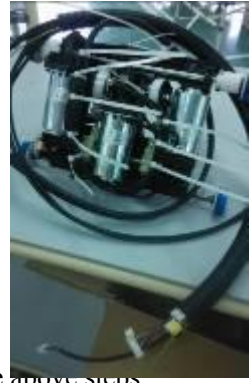
移除靠背顶部的左右防撞块  
Remove the 4 screws on top, and then take down the bumper block



B. 之后再从中心板上断开背架数据线, 并沿线解除绑定



- 拆除背架上的固定  
Remove the fixing for wire on the back frame
- 拆除座架下的固定  
Remove the fixing for wire under the seat frame
- 拆除中心板上的端子线  
Remove the terminal for wire on the PCB



C. 加24V给行起电机向上行走至顶端后提出机芯  
For 24V going to top, and take down the gear box after the above steps

平推杆的拆卸 **disassembly of the**

