



EASEPAL. 厦门蒙发利电子有限公司客户服务部

# EC-6262J massage chair service guide





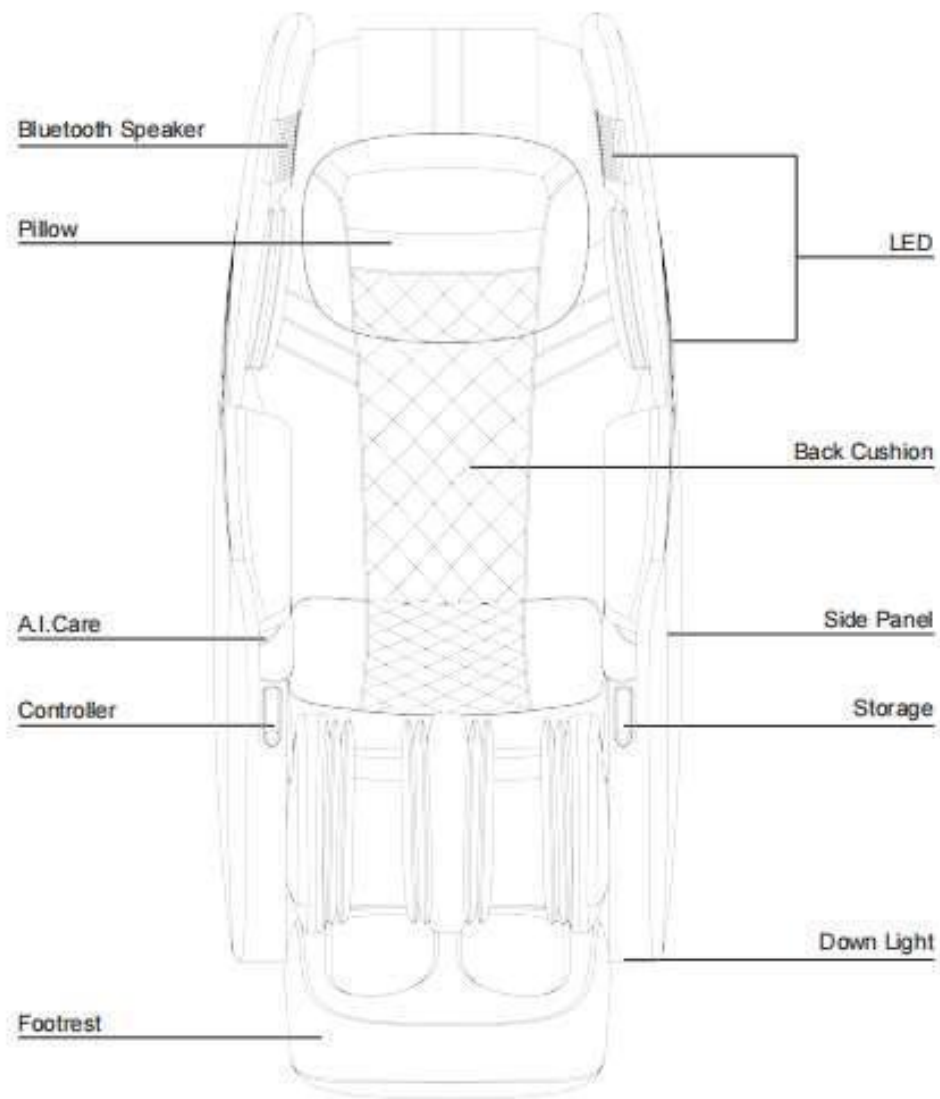
## Table of Contents

- 1、 Product introduction**
- 2、 Massage chair tools and use**
- 3、 Circuit working principle**
- 4、 Massage chair removal instructions**
- 5、 Massage chair fault judgment**





### 1、Appearance of massage chair:





## 2.remote controller





### 3、specifications of the products:

Description	Specifications
Model No.	OP-VERA 4D
Rated Voltage	110-120V~
Rated Frequency	60Hz
Rated current	1.0A
Timer	5/10/15/20/25/30 minutes
Dimension (L x W x H)	Product carton: 51" x 30.5" x 50"
Weight	Product gross weight: 235.9 lbs
	Product net weight: 203.9 lbs
Length of the wire	Controller wire: 59"
	Power supply wire: 71"
	Audio wire: 25.6"
Usage condition	Environment temperture: 10°-40°
	Contrasting humidity: 30-85RH
Storage condition	Storage temperture: 20°-60°
	Storage humidity level: 30-85RH
Safety feature	Equipped with overheated and power surge safety protection.
Using benefits	Increasing blood circulation; Relieving muscular fatigue



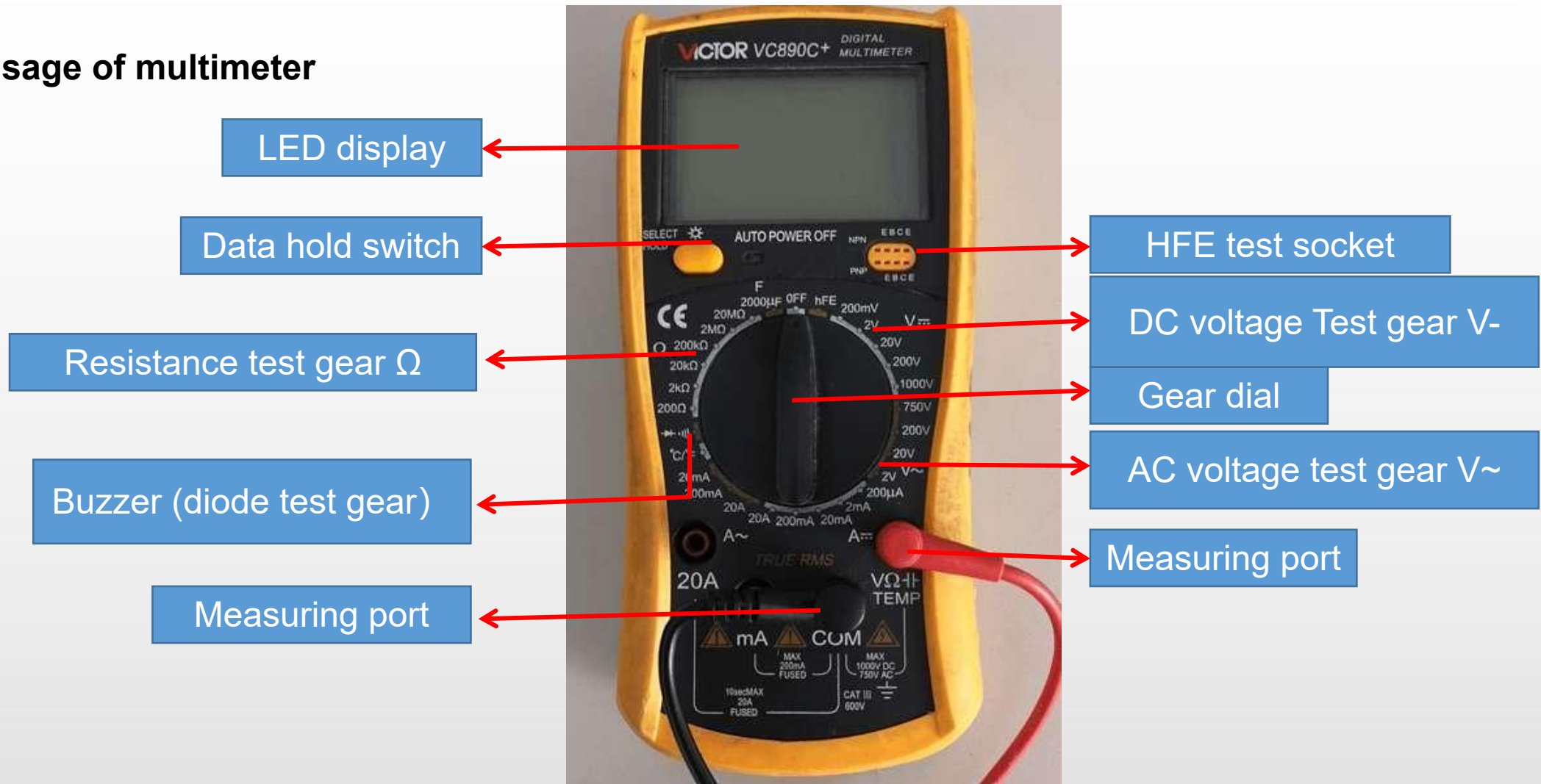
## 2、Massage chair tools and use

### 2.tools

					
Screwdriver size 1,2,3	Diagonal cutter and long nose pliers	Soldering Kit	Spanner tools Kit	Test pen	Allen Key set
					
Ratchet Tools Set	24V/DC power	Electric Driver	electrical adhesive tape	Cable Ties	WIRE ONECTORS



### 3、 Usage of multimeter





### 3.1、Function of the test gears

**Data hold switch:** Memorize the measured data for comparison.

**Buzzer (diode test gear) :** Measure the quality of diode, the on-off and alarm function of circuit

**Resistance gear test gear:** Measure the quality and value of resistance

**DC voltage Test gear V-:** Measure DC voltage

**AC voltage test gear V~:** Measure AC voltage

**VΩ / COM:** VΩ Red pen port (+ pole) during test, black pen port (- pole) during com test

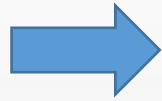
**Note:** when carrying out resistance or voltage test, it is necessary to select a suitable range. If the range is too small to be measured, and the range is too large, the test error range is large; if the voltage is not known, it is necessary to select a range measurement with a large windlass.



### 3.2、 On / off measurement of lines



open circuit



As shown in the left picture, first set the multimeter to the buzzer and power it  
When the switch is on, the multimeter will display "0."; then contact the two probes with the ends of the red wire  
At this time, the multimeter still shows "1." there is no change, which means there is an open circuit in the middle of the wire, that is, the line is open.



close circuit



As shown in the picture on the left, if the multimeter shows the number of ". 002" or ". 00n" and gives an alarm, it means that the wire is connected.



### 3.3、 Measurement of AC voltage



As shown in the picture above: measure the household plug-in board power supply (220V), select the range of 750, and the test result shows "224", indicating that the actual voltage of this group of sockets is 224v at the moment (the switch is pressed down, so there is power, and the light is on).



As shown in the above picture: measure the power supply (220V) of our household plug-in board, select the range of 750, and the test result is displayed as "001", indicating that the actual voltage of this group of sockets is 0V at the moment (the switch is not pressed down, so there is no power, and the light is not on).

### 3.4、 Measurement of dc voltag



As shown in the figure above: the test result shows "1.58", indicating that the voltage at both ends of the battery has 1.58V, and the red watch pen is connected to the battery's "+" pole, while the black pen is connected to the electromagnetic "-" pole.

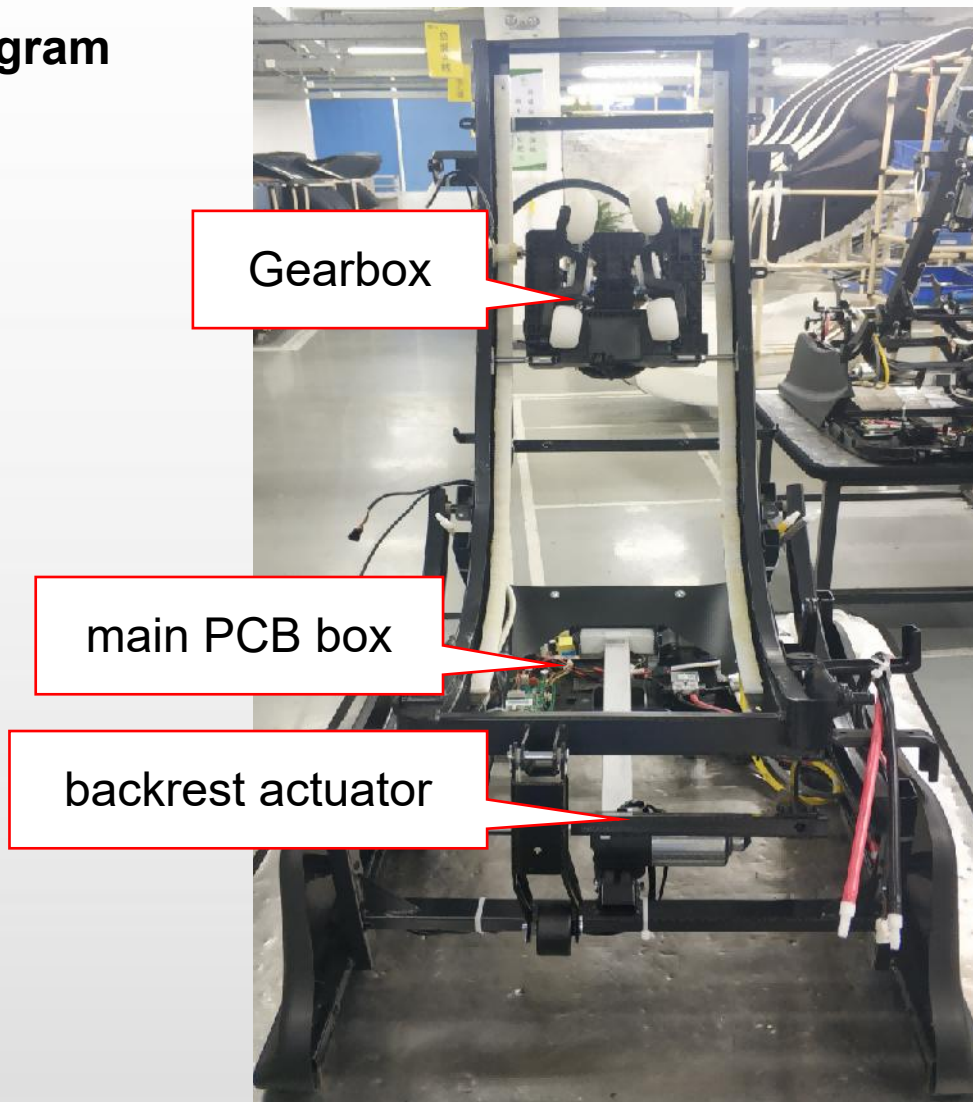


As shown in the figure above: the test result shows "-1.58", indicating that the voltage at both ends of the battery has 1.58V, and the red watch pen is connected to the battery "-" pole, and the black pen is connected to the electromagnetic "+" pole.



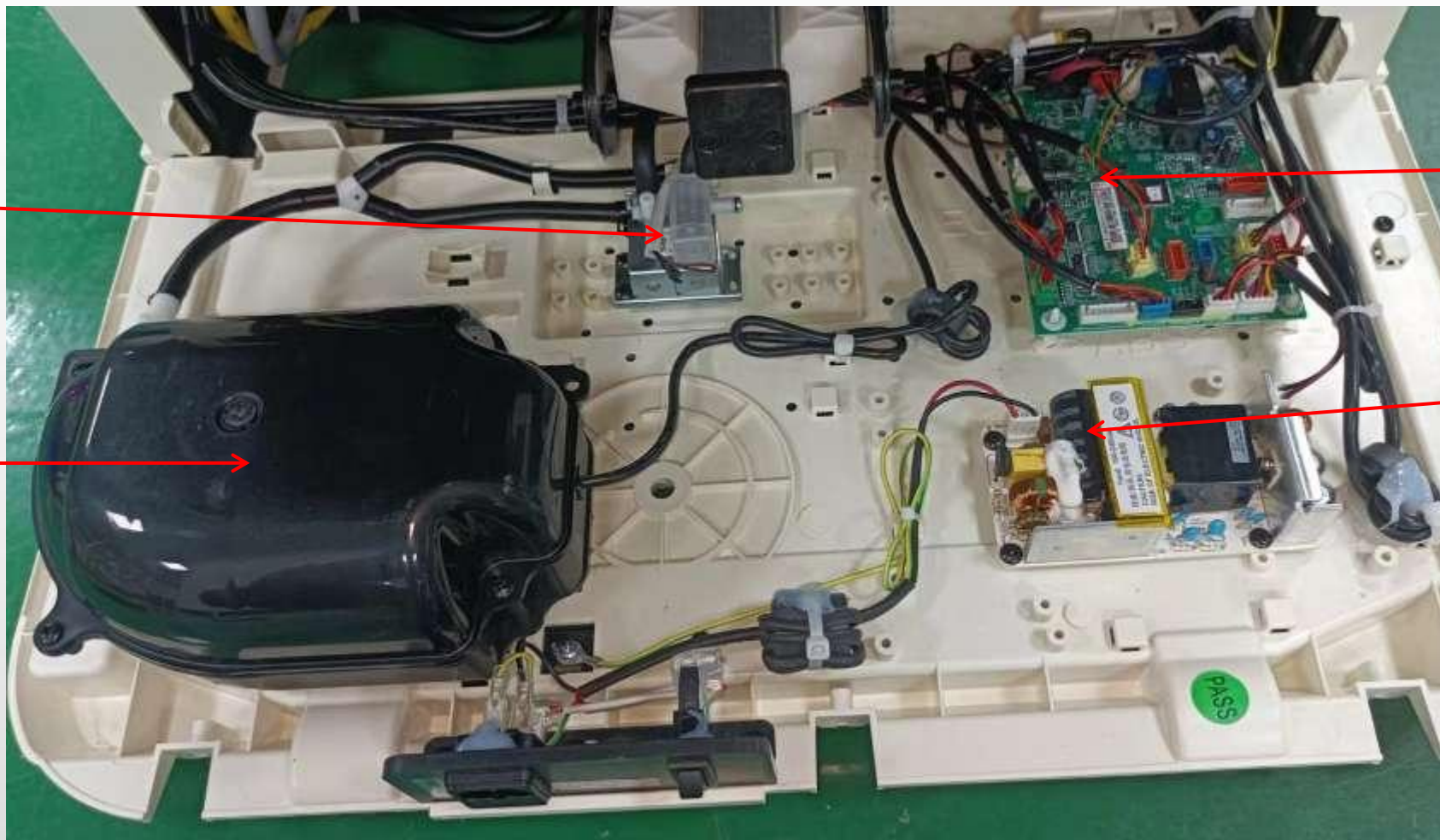
### 3、 Internal structure and disassembly of massage chair

#### 1、 Internal structure diagram (overall):





## 2. Internal structure diagram (main PCB box) :



AIR VALVE 2  
WAY

air pump

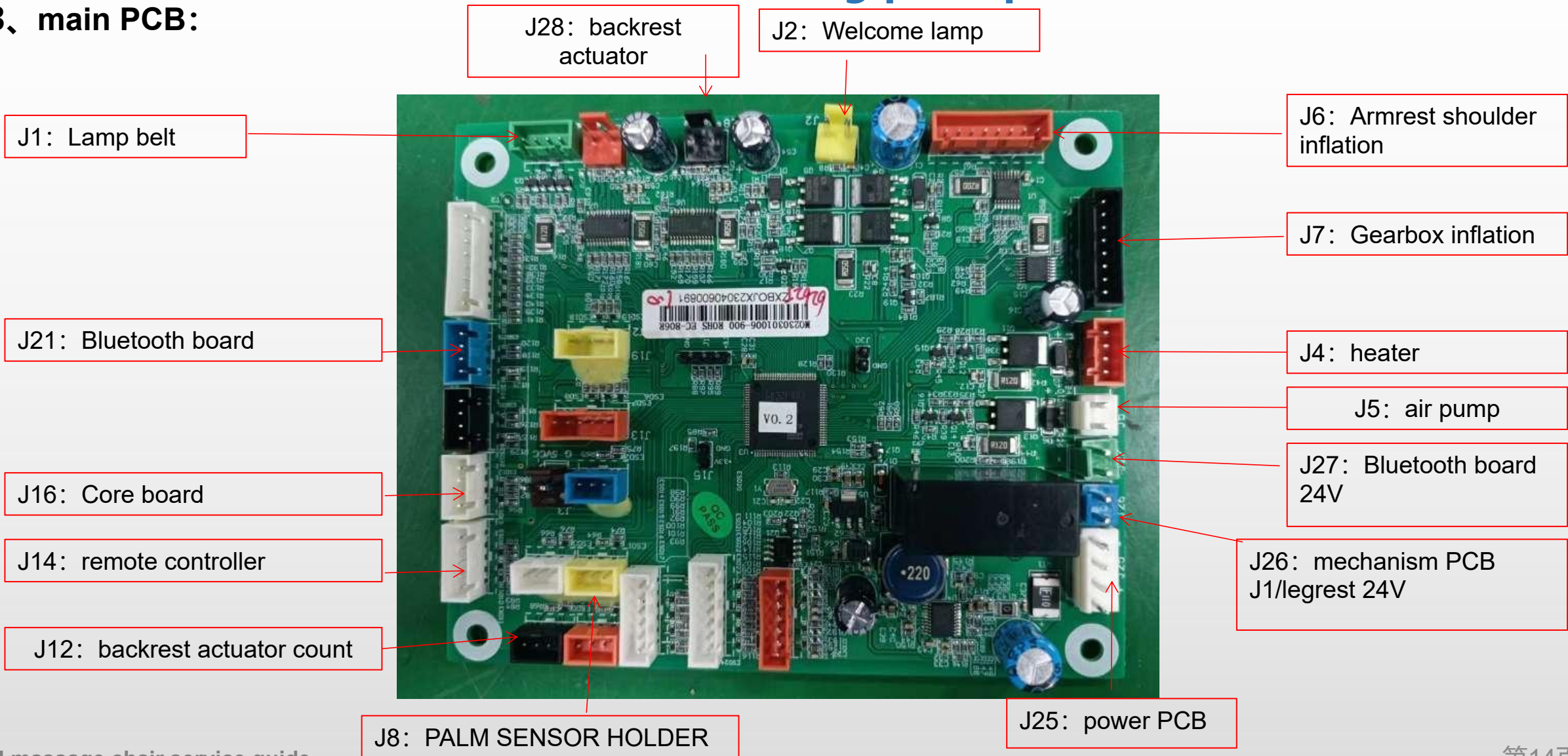
main PCB

Switching power  
board



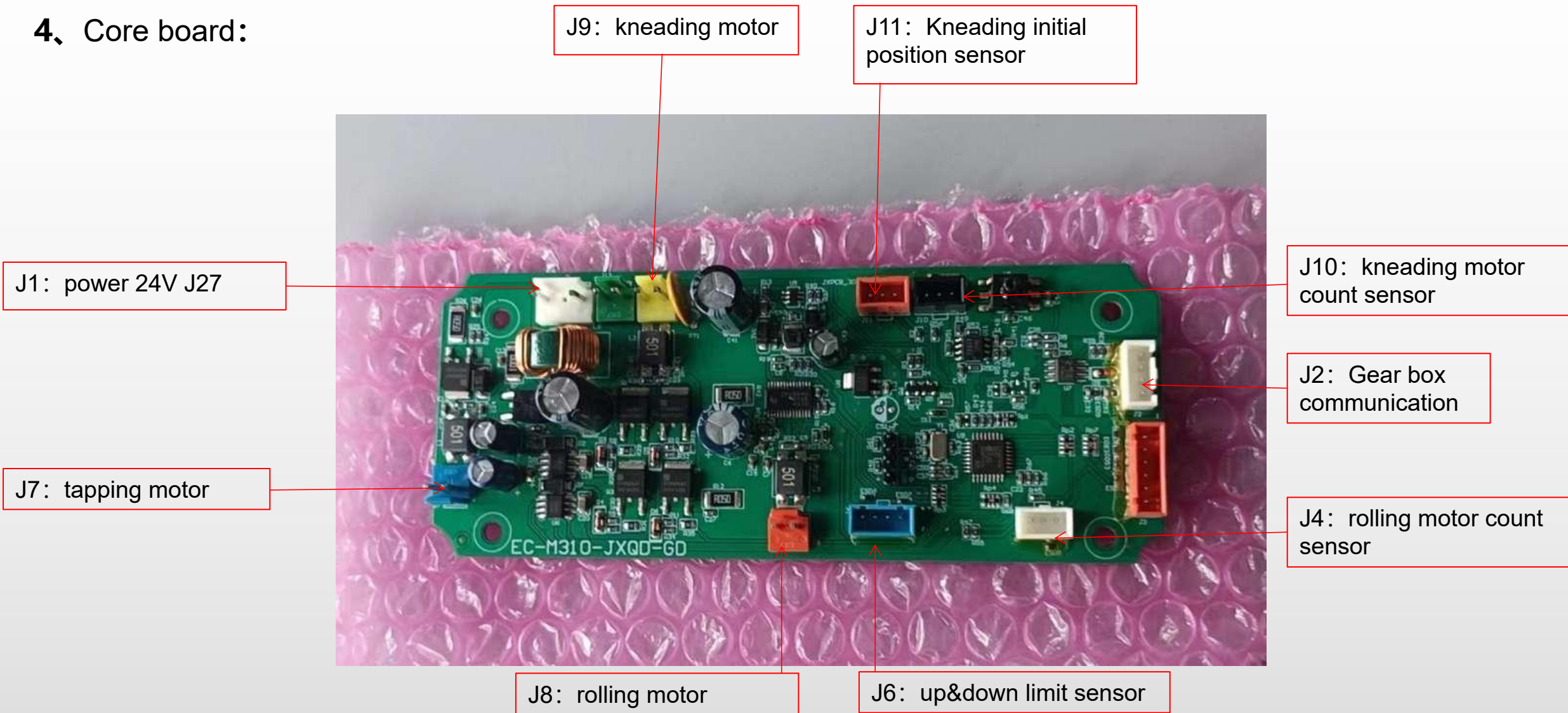
### 三、Circuit working principle

#### 3、main PCB:





#### 4、Core board:





**EASEPAL**

厦门蒙发利电子有限公司客户服务部

## 4、 Massage chair removal instructions

### 1、 disassembly of the pillow



unzip the zipper



pillow

## 2、disassembly of backrest pad



unzip the zipper



unzip the zipper



unzip the zipper



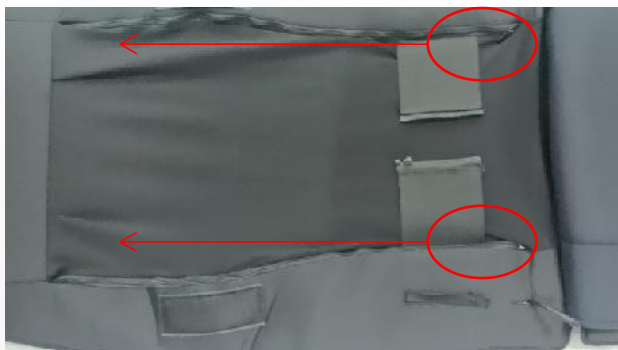
unzip the zipper



disconnected the terminal



backrest pad



unzip the zipper



Tear off the sticky fur buckle



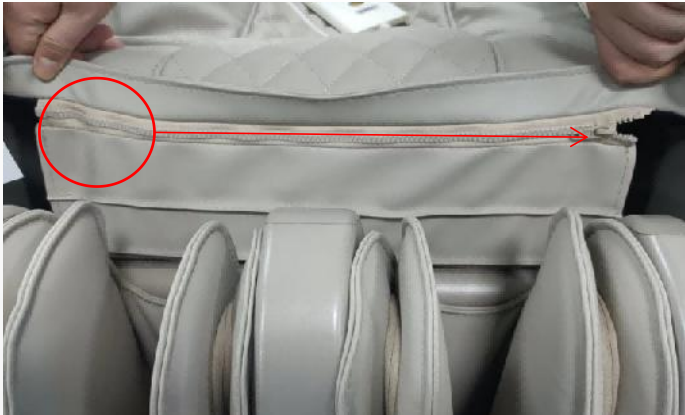
Heater



EASEPAL

厦门蒙发利电子有限公司客户服务部

### 3、disassembly of legrest



unzip the zipper



remove 2 limit baffles



disconnect the air hose and terminals



remove legrest

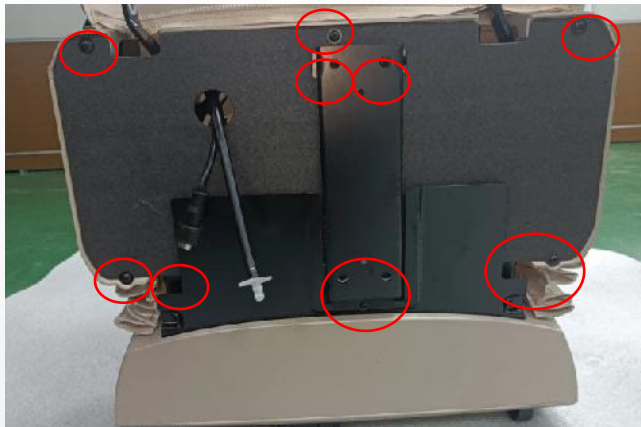


EASEPAL

厦门蒙发利电子有限公司客户服务部

#### 4、disassembly of legrest

##### a. remove the legrest



Remove 12 screws and remove the cover and hardware



Cut off the buckle and disconnect the signal terminal



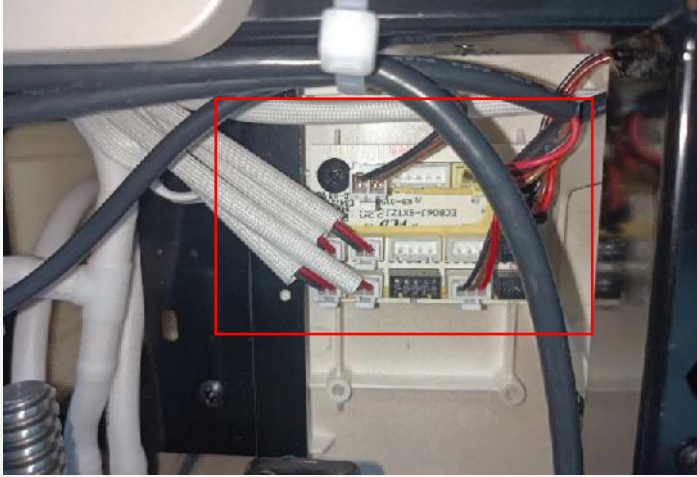
Remove 4 screws



Remove 3 metal clips



air valve 2way



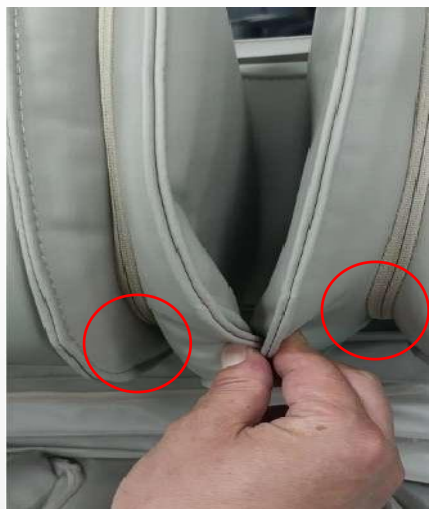
disconnected the terminals



Remove 2 screws



Connect legrest PCB



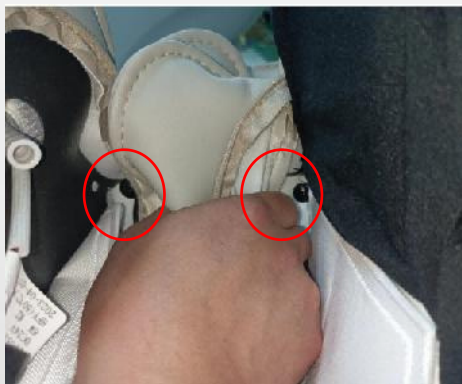
unzip the zipper



Remove 4 screws



Remove 4 screws



Remove 2 screws



upper legrest cover



Disassembly instructions for the lower foot rest



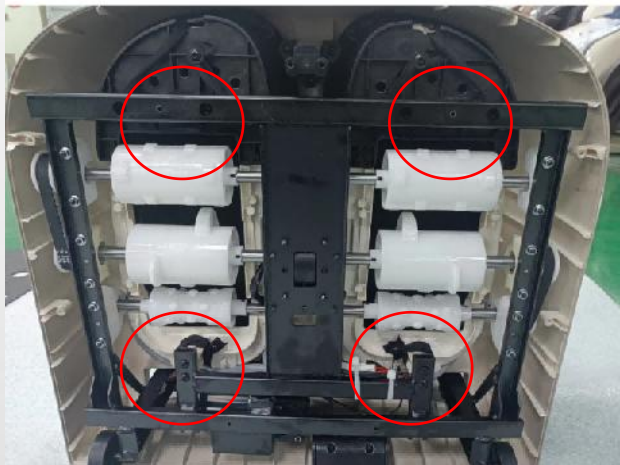
unzip the zipper



Remove 3 screws and pry out U-shaped nails



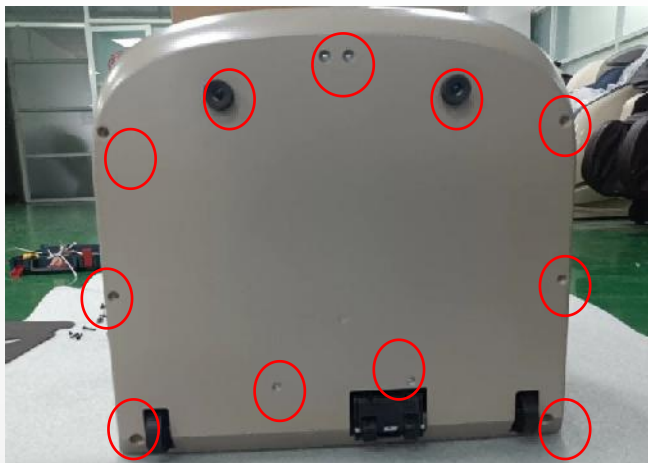
Remove all screws



Remove 4 screws and remove the fixing rope



LEATHER - FOOTREST



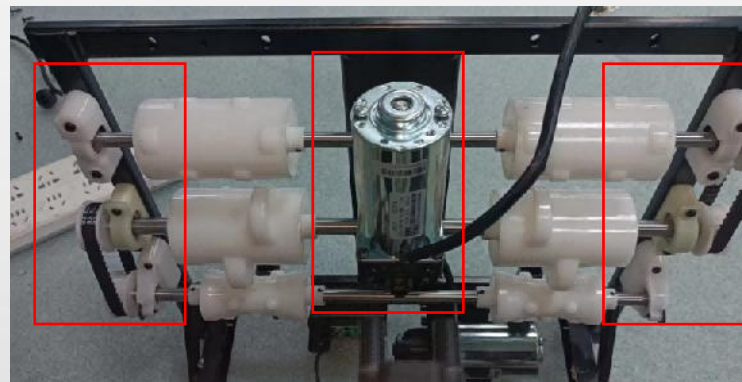
Remove all screws



Remove 8 screws



Cut off the buckle and disconnect the signal terminal



Remove the screws and remove the foot roller assembly

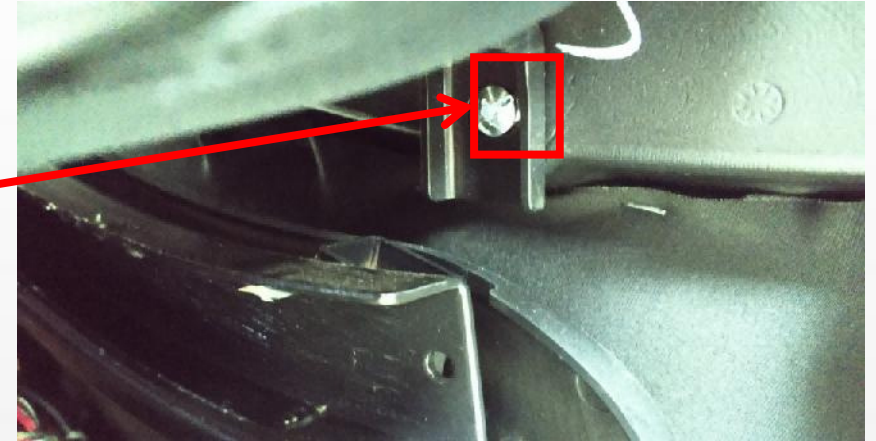
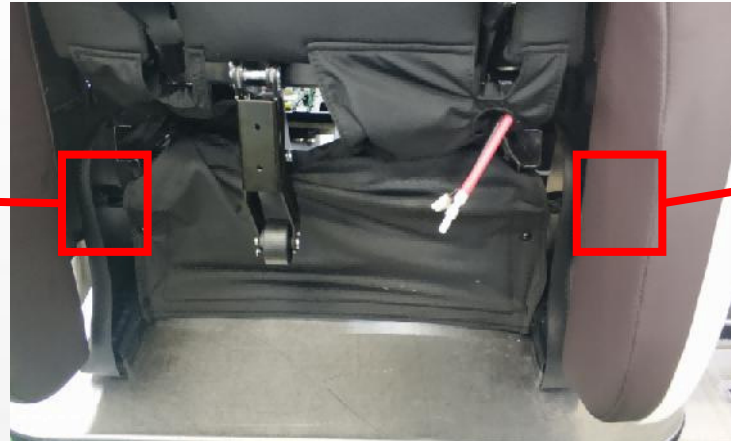
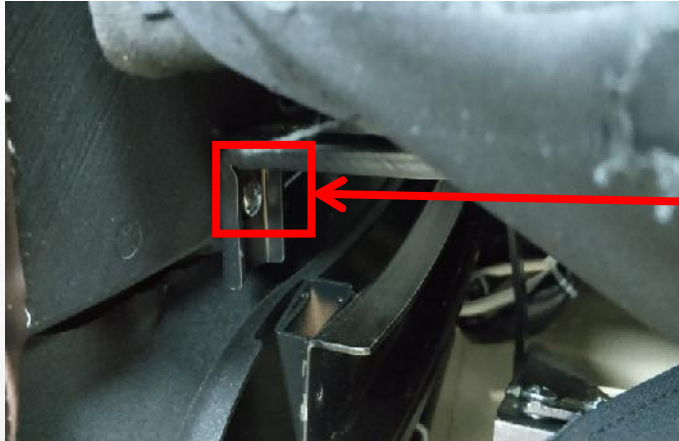


EASEPAL

厦门蒙发利电子有限公司客户服务部

## 6、disassembly of side panel

remove the legrest



Remove the screws



unzip the zipper



Remove 1 screws



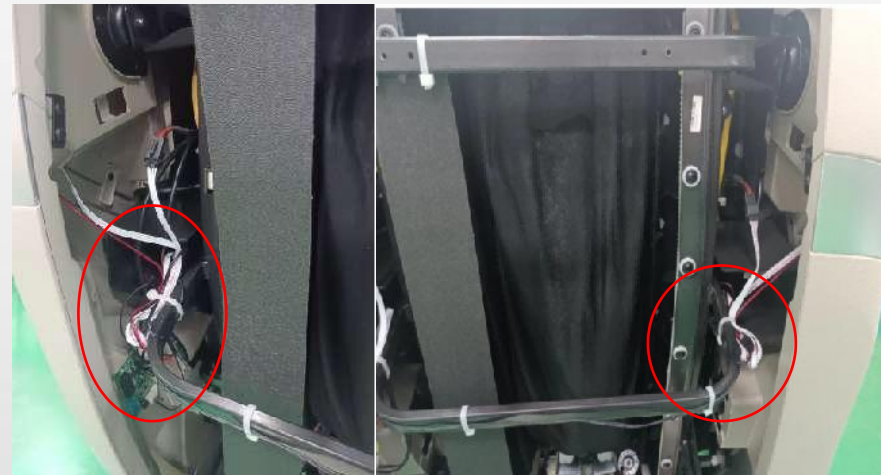
unzip the zipper



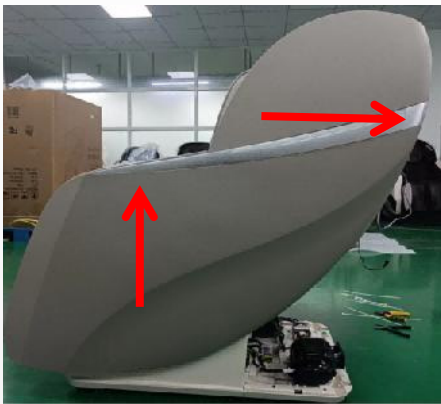
Remove 1 screws



Remove 4 screws



Cut off the buckle and disconnect the signal terminal



Lift the side panel up first, then move it back out



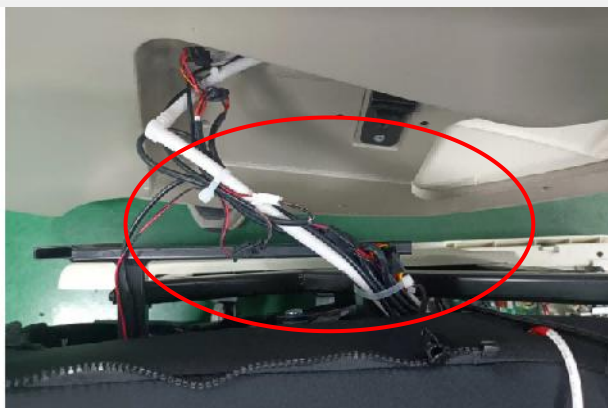
Cut off the buckle and disconnect the signal terminal



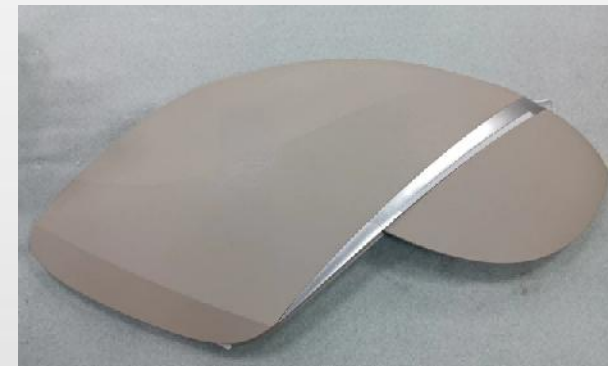
remove left side panel



Lift the side panel up first, then move it back out



Cut off the buckle and disconnect the signal terminal



remove right side panel



## 7. disassembly of Bluetooth PCB



disconnect the signal terminal



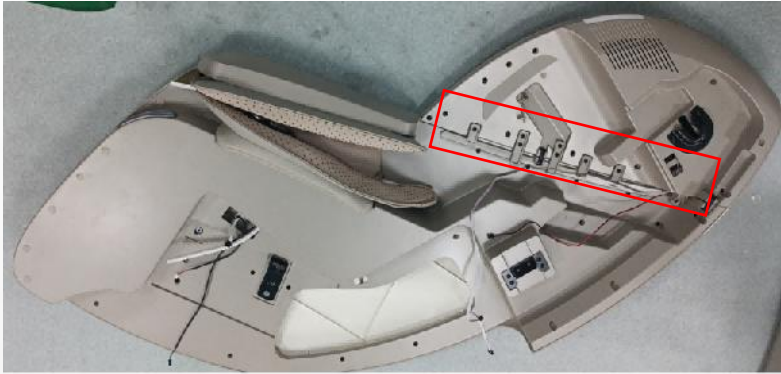
Remove 2 screws



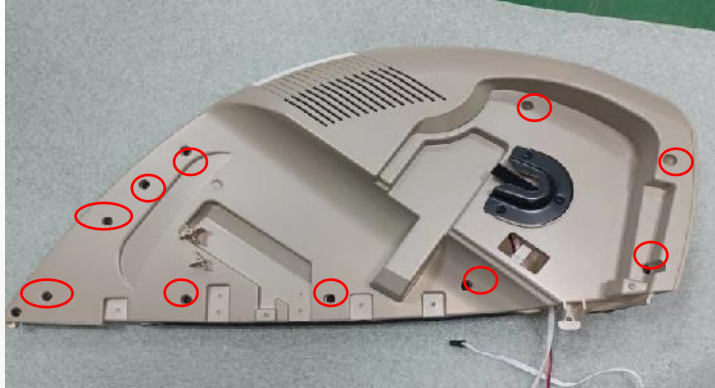
Bluetooth PCB



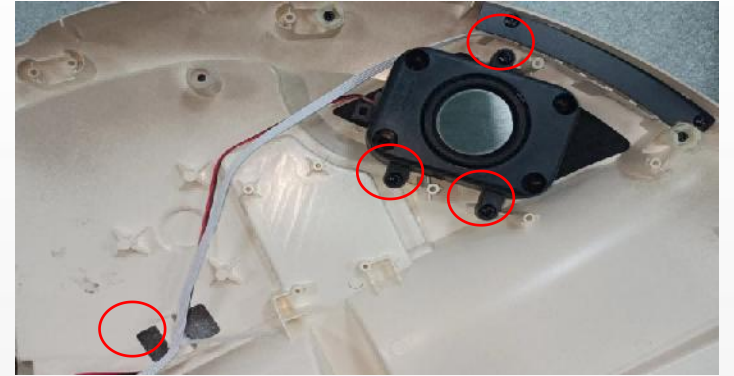
### 8. disassembly of the side panel



Remove 11 screws



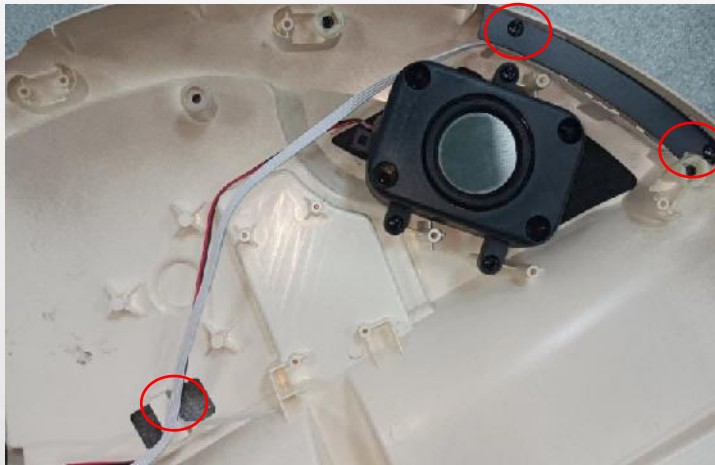
Remove 11 screws



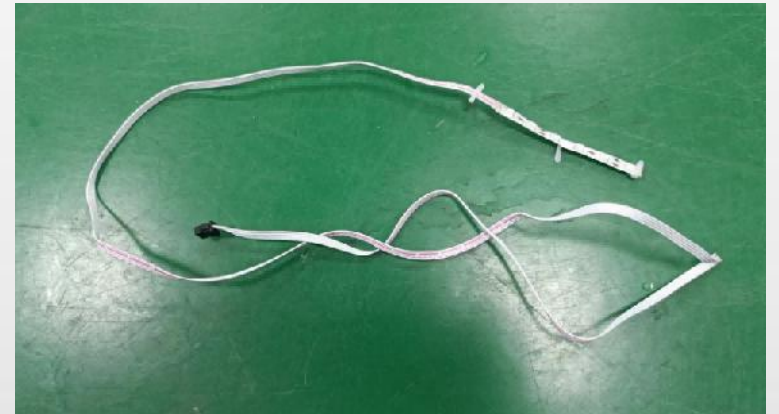
Remove 3 screws and cut off the tie buckle



speaker



Remove 2 screws and cut off the tie buckle



Light belt



EASEPAL

厦门蒙发利电子有限公司客户服务部



unzip the zipper



Remove 3 screws



Remove 4 screws



disconnect the signal terminal



Palm sensor upper cover

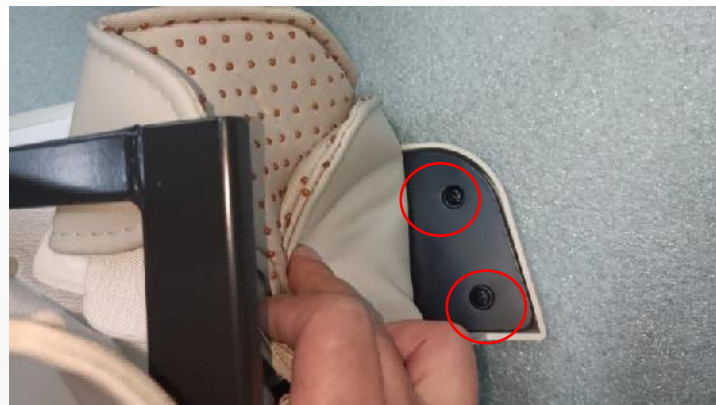


EASEPAL

厦门蒙发利电子有限公司客户服务部



Remove 2 screws



Remove 2 screws



Break open the buckle and remove the armrest cover



Remove 4 screws



LEATHER - ARMREST

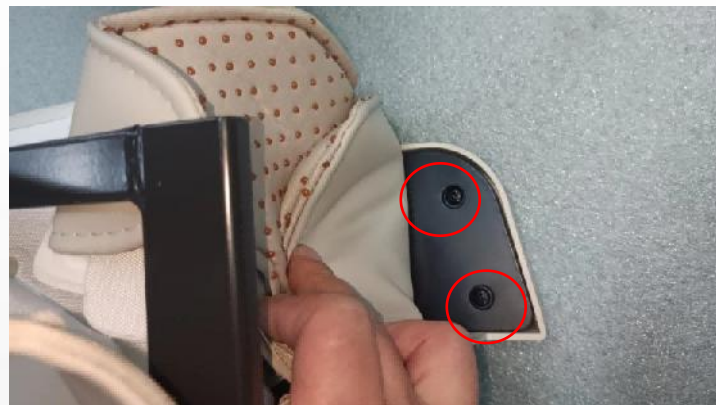


EASEPAL

厦门蒙发利电子有限公司客户服务部



Remove 2 screws



Remove 2 screws



Break open the buckle and remove the armrest cover



Remove 4 screws

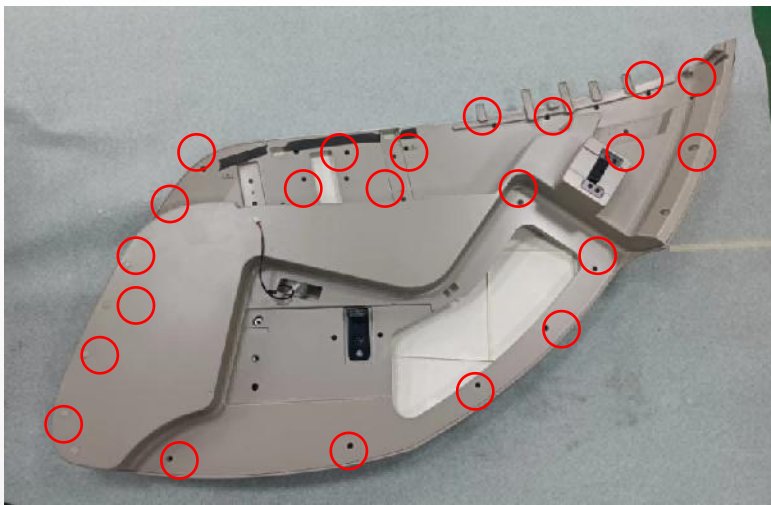


LEATHER - ARMREST

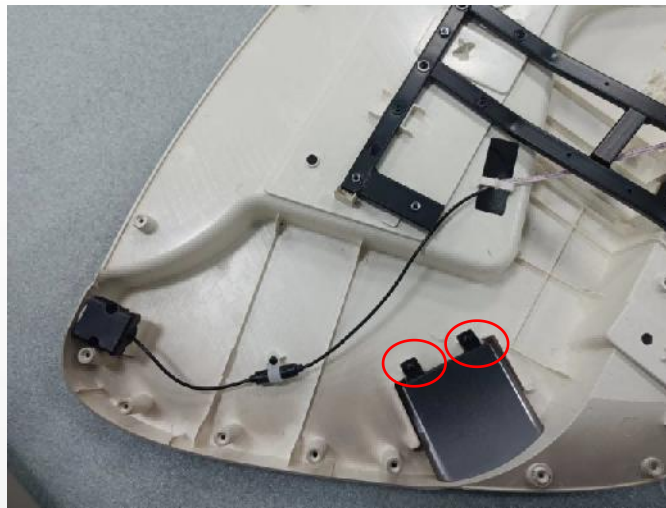


EASEPAL

厦门蒙发利电子有限公司客户服务部



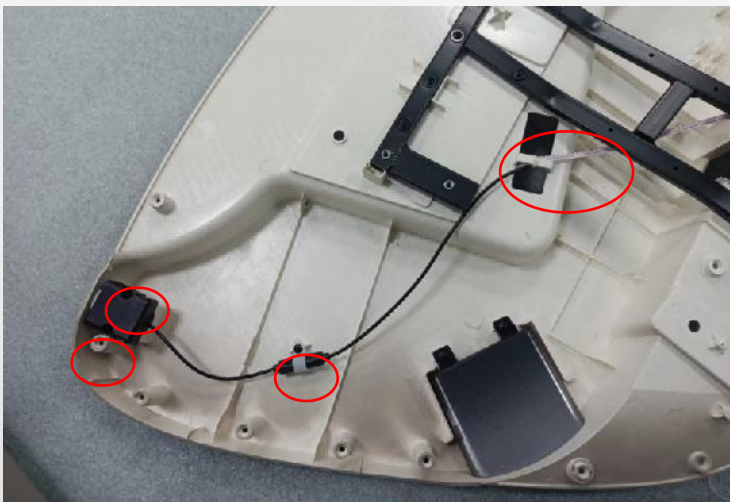
Remove all screws



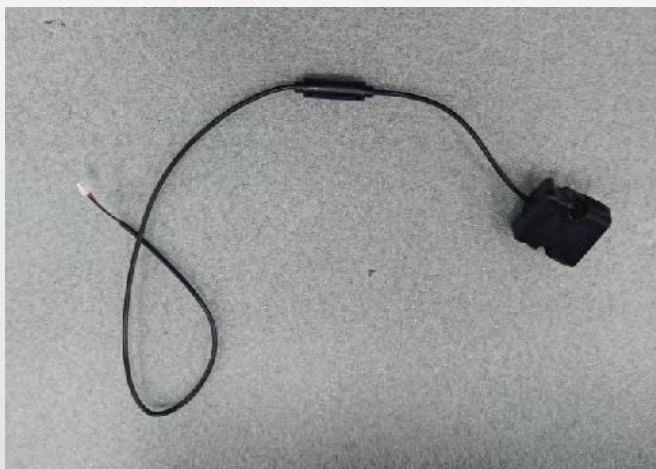
Remove 2 screws



Phone slot



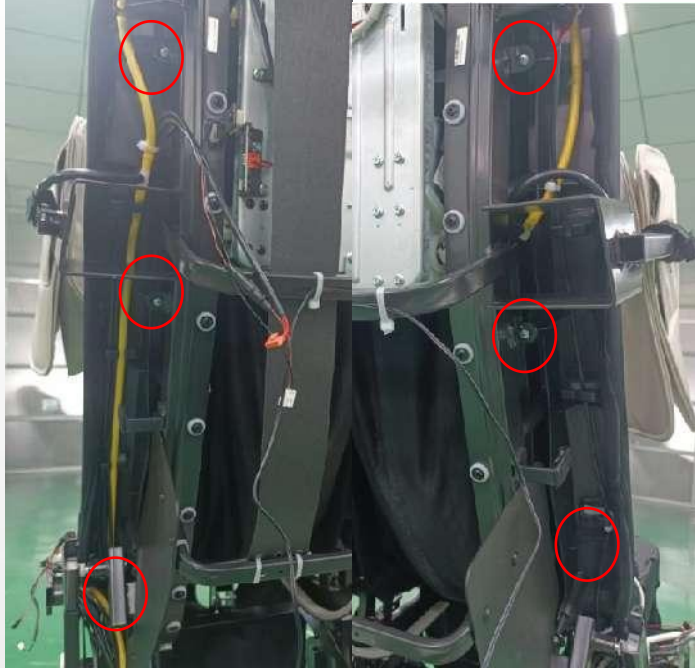
Remove 3 screws and cut off the tie buckle



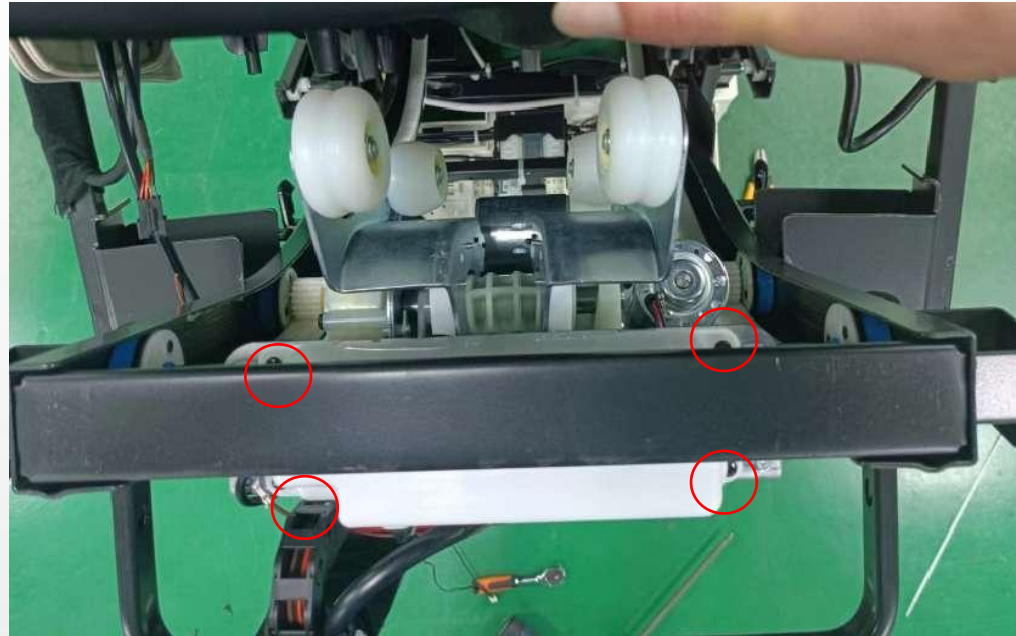
Welcome light



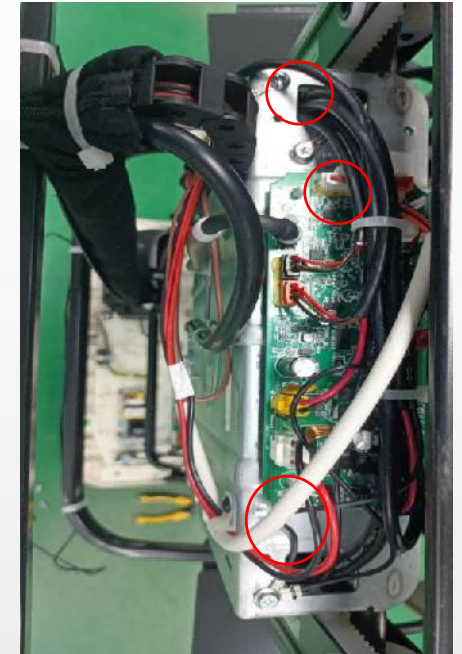
## 9、disassembly of backrest cable



Remove 6 screws



Push the front backrest forward  
, Remove 4 screws

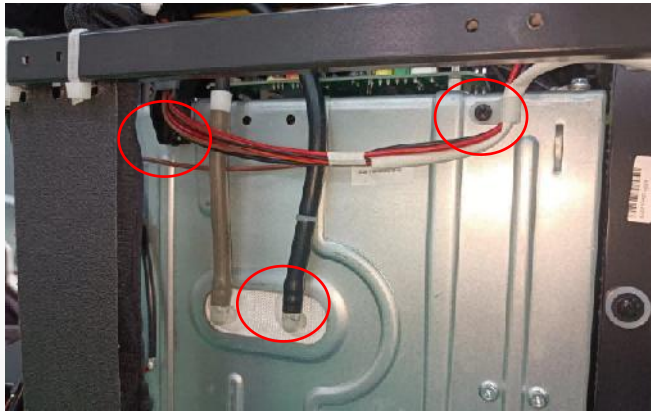


Remove one lightning  
wire screw and unplug  
two signal terminals



EASEPAL

厦门蒙发利电子有限公司客户服务部



Remove 3 screws, Disconnect the air pipe



Remove 2 screws



Cut off the buckle and disconnect the signal terminal



**backrest cable**



### 10. disassembly of Core board



Disconnect the signal terminal



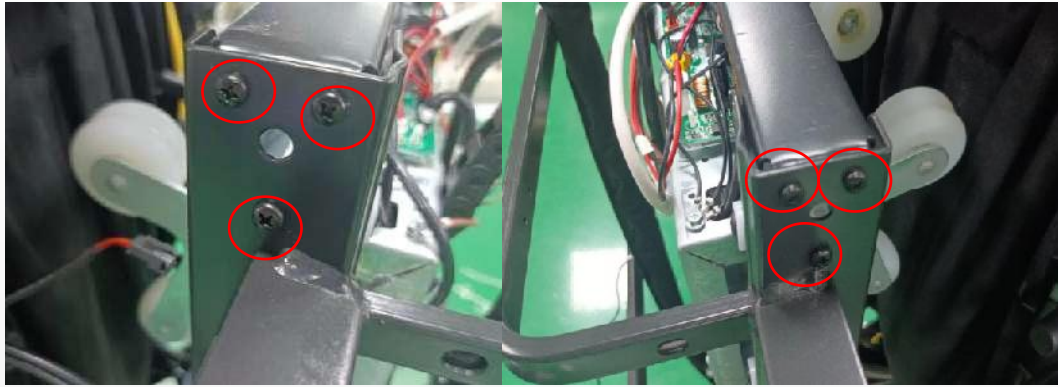
Remove the 4 Insulating column



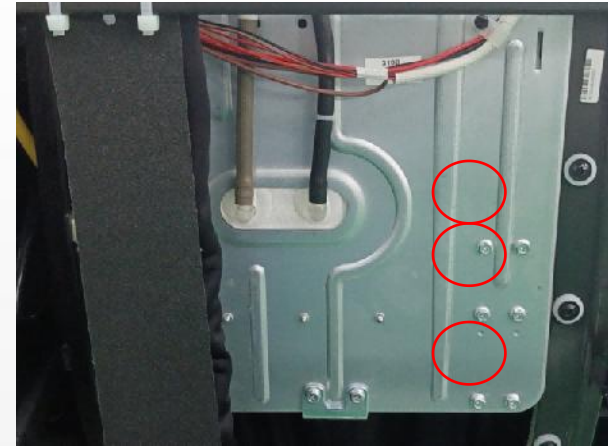
Core board



11. disassembly of gearbox (Refer to the disassembly of the backrest cable)



Remove 6 screws



Remove 6 screws



gearbox



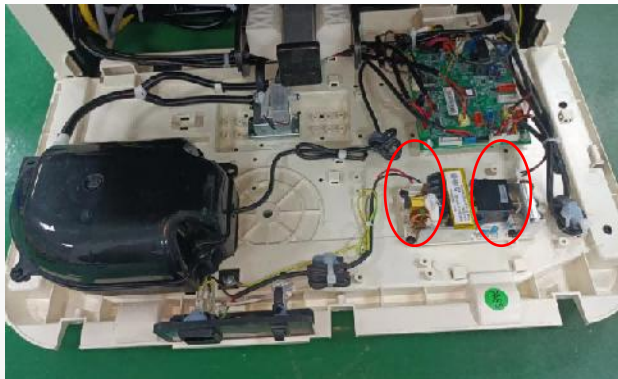
EASEPAL

厦门蒙发利电子有限公司客户服务部

## 12. disassembly of main PCB box



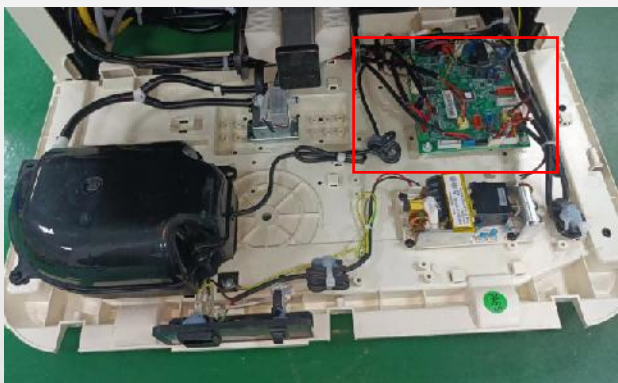
Remove 3 screws and remove the upper cover of the **main PCB box**



Remove 3 screws, Disconnect the 2 signal terminals



power PCB



Disconnect all signal terminals



Remove the Insulating column



main PCB

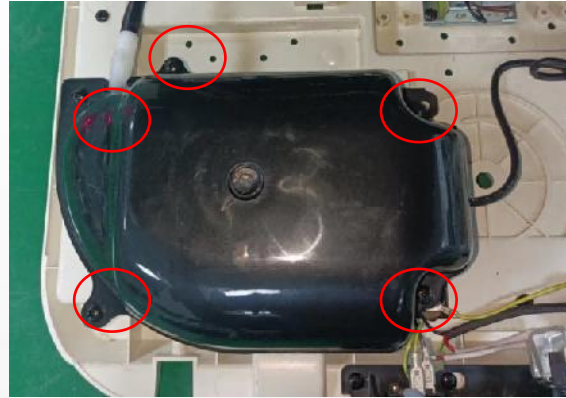


EASEPAL

厦门蒙发利电子有限公司客户服务部



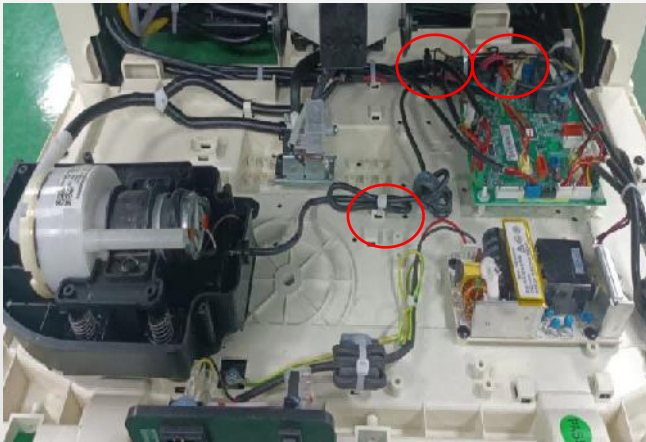
main PCB box



Remove 5 screws



Remove 2 screws,  
Disconnect the air hose



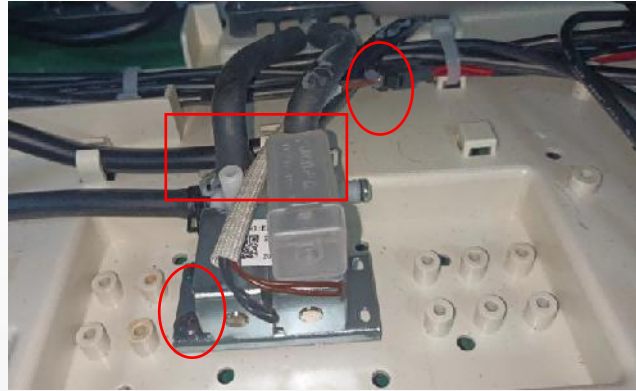
Cut off the 2 buckles and disconnect  
the signal terminals



air pump



**main PCB box**



Remove 5 screws  
, Disconnect the signal  
terminal and air hose



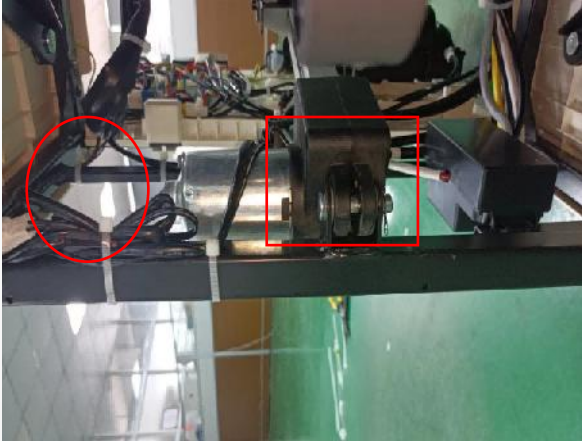
**AIR VALVE 2 WAY**



EASEPAL

厦门蒙发利电子有限公司客户服务部

### 13. disassembly of backrest actuator



Cut off the buckle,  
disconnect the signal  
terminal, and unplug the  
plug and pin shaft



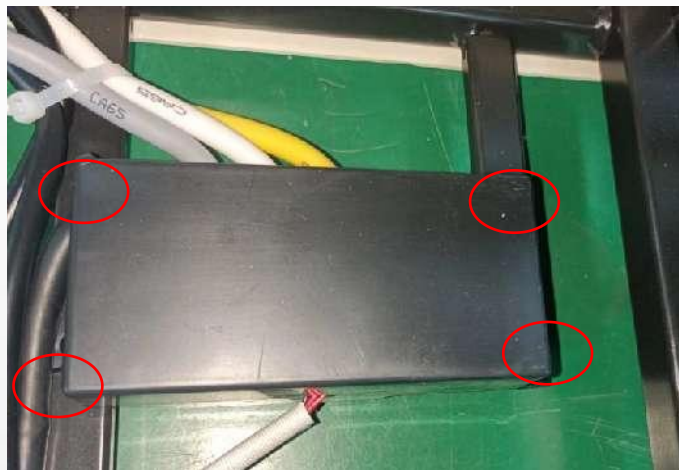
Remove two screws on each side



backrest actuator



### 14. disassembly of AIR VALVE 3 WAY



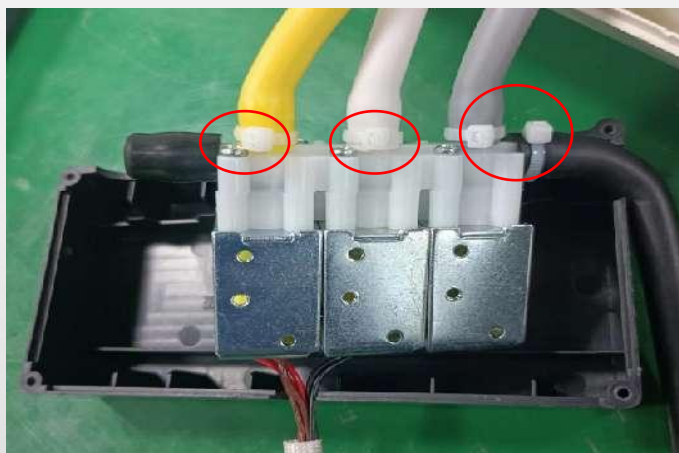
Remove 4 screws



Cut off the buckle and disconnect the signal terminal



Remove 4 screws



Cut off the tie and disconnect the air hose



**AIR VALVE 3 WAY**

Long press here



press here

# 5、massage chair auto-check list

## 1、massage chair auto-check list

Get into: : Press and hold Settings for 4 seconds, Enter the password interface, Password 0592, enter auto-check model



No.	故障描述 problem description	可能发生原因 steps of shooting the trouble	排除方法 steps of shooting the trouble	备注 remark
28	侧板检测到按键长按超过45S The side panel controller has detected that any button has been pressed for more than 45 seconds	1. 有按键卡键 1. one of the button has been blocked.	1. 检查侧板按键 Check the side panel buttons	实时检测 turn on the chair
01	手控器检测到按键长按超过40S remote control tested any key pressed more than 40 seconds	1. 有按键卡键 1. one of the KEY has been blocked.	1.检查手控器按键 1. Detect remote control buttons	实时检测 turn on the chair



## 5、massage chair auto-check list

03		<p>上下限位传感器同时有效 tested signals from up &amp; down limit sensor at the same time.</p>	<p>1.上下限位传感器坏 2.背架连线脱落 1. upper&amp;lower limit sensor is broken. 2. backrest wire or the terminals broken.</p>	<p>1.更换上下限位传感器 2.检查背架信号线连接 1. Change up &amp; down limit sensor 2. check whether the backrest wire is well connected</p>	<p>实时检测 turn on the chair</p>
04		<p>机芯有行走功能开启时,检测到行走计数异常 didn't tested the rolling counting signal</p>	<p>1.背架信号对插线接触不良 2.行程计数传感器坏 1. backrest wire is not well connected. 2. the counting sensor of the rolling motor is broken</p>	<p>1.检查背架信号对插线是否插好 2.行程计数传感器坏 1. check whether the backrest wire is well connected 2. change the counting sensor of the rolling motor</p>	<p>机芯有行走功能开启时, 实时检测 start the rolling function</p>



## 5、massage chair auto-check list

06		<p>小腿与中心板未成功通讯 footrest did not connected well</p>	<p>对插线接触不良或断裂 1.connector of leg rest wire not well 2.wire of leg rest broken</p>	<p>检查或更换对插线 1.check the connector of leg rest wire 2.change the wire of leg rest</p>	<p>进入自检模式时检测 enter auto-check model</p>
09		<p>5S钟未检测到揉捏电机转动圈数计数信号 more than 5 seconds did not tested the kneading counting signal</p>	<p>1.宽度检测板坏 2.宽度板连线异常 3.揉捏电机坏或皮带脱落 1.width inspection board is broken 2.the wire connect to the width inspection board is disconnected 3.kneading motor is broken or kneading belt is lost</p>	<p>1.更换宽度检测板 2.更换背架信号线 3.更换电机 1.change width inspection board 2.change backrest wires. 3.change kneading motor</p>	<p>进入自检模式时检测 enter auto-check model</p>



## 5、massage chair auto-check list

10		<p>5S钟未检测到宽位信号 more than 5 seconds did not tested the narrow signal</p>	<p>1.宽度检测板坏 2.宽度板连线异常 3.揉捏电机坏或皮带脱落 1. width inspection board is broken 2. the wire connect to the width inspection board is disconnected 3. kneading motor is broken or kneading belt is lost</p>	<p>1.更换宽度检测板 2.更换背架信号线 3.更换电机 1. change width inspection board 2. change backrest wires. 3. change kneading motor</p>	<p>进入自检模式时检测 enter auto-check model</p>
13		<p>上下限位传感器同时有效 tested signals from up &amp; down limit sensor at the same time.</p>	<p>1.上下限位传感器坏 2.背架连线脱落 1. upper&amp;lower limit sensor is broken. 2. backrest wire or the terminals broken.</p>	<p>1.更换上下限位传感器 2.检查背架信号线连接 1. Change up &amp; down limit sensor 2. check whether the backrest wire is well connected</p>	<p>进入自检模式时检测 enter auto-check model</p>



## 5、massage chair auto-check list

14		<p>40S钟未检测到上限位传感器信号 more than 40s didn't tested the signal from the upper limit sensor</p>	<p>1.上限位传感器坏 2.背架连线脱落 3.行走电机坏或断线 1. upper limit sensor is broken. 2. backrest wire is disconnected 3. rolling motor is broken or rolling motor wire disconnected</p>	<p>1.更换上限位传感器板 2.检查背架信号线连接 3.更换行走电机或连线 1. change upper limit sensor 2. check whether the backrest wire is well connected. 3. change rolling motor or rolling motor wire.</p>	<p>进入自检模式时检测 enter auto-check model</p>
15		<p>机芯有行走功能开启时,检测到行走计数异常 didn't tested the rolling counting signal</p>	<p>1.背架信号对插线接触不良 2.行程计数传感器坏 1. backrest wire is not well connected. 2. the counting sensor of the rolling motor is broken</p>	<p>1.检查背架信号对插线是否插好 2.行程计数传感器坏 1. check whether the backrest wire is well connected 2. change the counting sensor of the rolling motor</p>	<p>进入自检模式时检测 enter auto-check model</p>



### 5、massage chair auto-check list

16		<p>上限位传感器检测到信号后<b>2S</b>内又检测到下限位传感器信号 test the signal from upper limit sensor in 2 seconds test the lower limit sensor</p>	<p>1.下(上)限位传感器坏 1.lower limit sensor or upper limit sensor is broken.</p>	<p>1.更换下(上)限位传感器板 2.检查下(上)限位传感器线连接 1.change lower limit sensor or upper limit sensor 2.Check if the lower limit sensor or upper limit sensor wire is properly connected.</p>	<p>进入自检模式时检测 enter auto-check model</p>
17		<p><b>40S</b>钟未检测到下限位传感器信号 more than 40s didn't tested the signal from the lower limit sensor</p>	<p>1.下限位传感器坏 2.背架连线脱落 3.行走电机坏或断线 1.lower limit sensor is broken. 2.backrest wire is disconnected 3.rolling motor is broken or rolling motor wire disconnected</p>	<p>1.更换下限位传感器板 2.检查背架线连接 3.更换行走电机坏或连线 1.change lower limit sensor 2.check whether the backrest wire(black) is well connected. 3.change rolling motor or rolling motor wire.</p>	<p>进入自检模式时检测 enter auto-check model</p>



## 5、massage chair auto-check list

18		<p>下限位传感器检测到信号后<b>2S</b>内又检测到上限位传感器信号 test the signal from lower limit sensor in 2 seconds test the upper limit sensor</p>	<p><b>1.上(下)限位传感器坏</b> 1.upper limit sensor or lower limit sensor is broken.</p>	<p><b>1.更换上(下)限位传感器板</b> <b>2.检查上(下)限位传感器线连接</b> 1.change upper limit sensor or lower limit sensor 2.Check if the lower limit sensor or upper limit sensor wire is properly connected.</p>	<p>进入自检模式时检测 enter auto-check model</p>
19		<p>小腿推杆开启<b>2.5S</b>未检测到计数信号 (或<b>40S</b>未检测到推杆到位信号) when start the leg rest actuator, there is no counting signal for more than 2.5 seconds (<b>or 40 seconds did not test the actuator Reset signal</b>)</p>	<p><b>1.小腿推杆电机坏</b> <b>2.小腿推杆电机连线脱落</b> 1.leg rest actuator broken 2.leg rest actuator wire broken</p>	<p><b>1.更换小腿推杆电机</b> <b>2.检查小腿推杆电机连线</b> 1.change leg rest actuator 2.check the wire of the leg rest actuator</p>	<p>进入自检模式时检测 enter auto-check model</p>



## 5、massage chair auto-check list

21		<p>机芯板与中心板超过<b>6S</b>未成功通讯 The communication between the core board and the main board has not been successful for more than 6 seconds</p>	<p>1.机芯板连线断线 1.Core board wiring disconnection</p>	<p>1.更换机芯板连线 1.change backrest wires.</p>	<p>实时检测 turn on the chair</p>
25		<p>背部推杆开启<b>2.5S</b>未检测到计数信号 (或<b>40S</b>未检测到推杆到位信号) when start the backrest recline actuator, there is no counting signal for more than 2.5 seconds (<b>or didn't tested the signal from the actuator mother then 40 seconds</b>)</p>	<p>1.背部推杆电机坏 2.背部推杆电机连线脱落 3.背部推杆计数连线脱落 1.backrest recline actuator is broken 2.backrest recline actuator wire is disconnected 3.the signal wire of the backrest recline wire is disconnected</p>	<p>1.更换背部推杆电机 2.检查背部推杆电机连线 3.检查背部推杆计数连线 1.change backrest recline actuator 2.check whether backrest recline actuator motor wire is well connected. 3.check whether the signal wire of the backrest recline actuator is well connected</p>	<p>自检开启时检测 enter auto-check model</p>